



Ergonomic Anti-Fatigue and Safety Matting

www.notrax.eu

Catalogue No. 6

Index and Guide

Art.	Product	Page	Art.	Product	Page
Notrax®	Matting Pictograms	3	539	Gripwalker™	45
Notrax®	Product Testing	3	681	Grit Trax™	46/47
Notrax®	Floormatting	4/5	T23	Multi Mat II®	46/47
	Benefits of Anti-Fatigue Matting	6/7	T21	Multi Mat II® Solid	46/47
			420	Cushion Dek™	46/47
			422	Cushion Dek™ Grip Step®	46/47
	Workplace Solutions for Dry Areas	8/9		Electrostatic Discharge (ESD) Solutions	48/49
782	Sky Trax®	10/11	826	Diamond Stat™	50/51
479	Cushion Trax®	12/13	825	Cushion Stat™	50/51
470	Marble Sof-Tyle™	14/15	463	Skywalker HD™ ESD	52/53
406	Crossrib Sof-Tred™	16/17	464	Skywalker HD™ ESD Nitrile FR	52/53
413	Gripper Sof-Tred™	16/17	558	Cushion Ease Solid™ ESD	52/53
417	Bubble Sof-Tred™	16/17	661S	Cushion Ease Solid™ ESD Nitrile FR	52/53
419	Diamond Sof-Tred™	16/17	457	Skystep™ ESD	54/55
408	Airug Plus®	18/19	452	Skywalker® PUR ESD	54/55
409	Sof-Tred Plus™	18/19	453	Skywalker® II PUR ESD	54/55
410	Airug®	18/19	827	Anti-Stat P.O.P.™	56/57
411	Sof-Tred™	18/19	051	Floor Mat Grounding Cord	57
649	Safety Stance Solid™	20/21	052	Common Grounding Point Cord	57
556	Cushion Ease Solid™	22/23	053	Coil Cord	57
656S	Cushion Ease Solid™ Nitrile	22/23	054	Earth Bonding Plug	57
656SFR	Cushion Ease Solid™ Nitrile FR	22/23	055	Heel Grinder	57
856SFR	Cushion Ease Solid™ Nitrile GSII® FR	22/23	056	Wrist Band	57
558	Cushion Ease Solid™ ESD	22/23	057	Mat Cleaner	57
661S	Cushion Ease Solid™ ESD Nitrile DIF FR	22/23		Industrial Specialties	
460	Skywalker HD™	24/25	830	Switchboard Matting™	58/59
462	Skywalker HD™ Nitrile	24/25	580	Sorb Stance™	60/61
463	Skywalker HD™ ESD	24/25	585	Eco Stance™	60/61
464	Skywalker HD™ ESD Nitrile FR	24/25	040	Slabmat Carré™	62/63
465	Skywalker HD™ Nitrile FR	24/25	045	Slabmat™	62/63
469	Skywalker HD Yellow™	26	750	Rib 'n' Roll™ 3 mm fine rib	64
430	Skywalker HD i-Curve™	26/27	751	Rib 'n' Roll™ 6 mm fine rib	64
432	Skywalker HD i-Curve™ Nitrile	26/27	752	Rib 'n' Roll™ 3 mm broad rib	64
433	Skywalker HD i-Curve™ ESD	26/27	753	Rib 'n' Roll™ 6 mm broad rib	64
434	Skywalker HD i-Curve™ ESD Nitrile FR	26/27	750RS	Rib 'n' Roll™ RS 3 mm fine rib	64
435	Skywalker HD i-Curve™ Nitrile FR	26/27	746	Check 'n' Roll™ 3 mm	65
440	Skywalker HD o-Curve™	26/27	746GR	Check 'n' Roll™ 3 mm Nitrile	65
442	Skywalker HD o-Curve™ Nitrile	26/27	745	Dots 'n' Roll™ 3,5 mm	65
443	Skywalker HD o-Curve™ ESD	26/27	737	Diamond Plate Runner™ 4,7 mm	65
444	Skywalker HD o-Curve™ ESD Nitrile FR	26/27		Food Processing and Food Service Matting Solutions	66/67
445	Skywalker HD o-Curve™ Nitrile FR	26/27	346	Sani-Trax™	67
450	Skywalker® PUR	28/29	T11	San-Eze II®	68/69
451	Skywalker® II PUR	28/29	563RD	Sanitop Deluxe™ Red	69
452	Skywalker® PUR ESD	28/29	550RD	Cushion Ease™ Red	70/71
453	Skywalker® II PUR ESD	28/29	562RD	Sanitop™ Red	70/71
455	Skystep™	30/31	458	Skystep™ Red	70/71
456	Skystep™ Nitrile	30/31	T23RD	Multi Mat II® Red	72/73
457	Skystep™ ESD	30/31	T21RD	Multi Mat II® Solid Red	72/73
621	Diamond Flex Lok™ Solid	32/33		Anti-slip Hygienic Matting Solutions	74/75
920HD	Cushion Lok HD™ Solid	32/33	523	Modular Lok-Tyle™	75
922HD	Cushion Lok HD™ Solid Grip Step®	32/33	536	Akwadek™	76/77
			538	Gripwalker Lite™	76/77
			535	Soft-Step™	76/77
	Workplace Solutions for Wet Areas	34/35		Chemical Resistance Chart	78/79
549	Safety Stance™	36/37			
550	Cushion Ease™	38/39			
650S	Cushion Ease™ Nitrile	38/39			
650SFR	Cushion Ease™ Nitrile FR	38/39			
850	Cushion Ease™ GSII® Nitrile FR	38/39			
563	Sanitop Deluxe™	40/41			
562	Sanitop™	40/41			
620	Diamond Flex Lok™	42/43			
520HD	Cushion Lok HD™	42/43			
522HD	Cushion Lok HD™ Grip Step®	42/43			
537	Flexdek™	44/45			

Notrax® Matting Pictograms



Anti-Fatigue
Matting that alleviates foot pressure, stimulates blood circulation and helps reduce stress on the lower back, leg joints and major muscle groups.



Protection
Absorbs impact, reduces breakage and protects floors.



Cold Resistant
Material can withstand freezing temperatures.



Anti-Slip
Matting designed to provide added traction through aggressive surface patterns and textures.



Non-Conductive
Matting formulated to provide insulation to protect workers in case of electrical shock.



Grease and Oil Resistant
Matting that is suitable for use in contact with vegetable oils and animal fats.



Oil Resistant
Matting suitable for contact with industrial oils.



Wheeled Access
Matting suitable for wheeled access (i.e. carts).



RedStop™
This uniquely engineered technology virtually eliminates the slipping and sliding of mats.



Welding
Made of durable fire retardant rubber compounds. These mats can be used in areas where welding takes place.



Insulation
Against cold, heat, vibrations and noise. Matting elevates standing workers from cold/wet floors, which keeps their feet warmer thereby improving overall perception of wellbeing.



MicroStop™
Antibacterial treatment inhibits the growth of micro-organisms such as bacteria and fungi that can cause odour, stains, and product deterioration.



ESD
Matting formulated to absorb static electricity. Avoids unpleasant static shock and safeguards equipment.



Heavy Duty
Recommended for heavy duty use in industrial environments.



NFSI®
Tested and certified by the National Floor Safety Institute.



Fire Retardant
Matting designed to resist the spread of fire and withstand heat, substantiated by test certifications from independent laboratories.



Medium Duty
Recommended for medium duty use in industrial environments.



NSF
Tested and certified by the National Sanitation Foundation for grease and oil protection and durability.



Grip Step®
Coating for extra adherence in extremely slippery areas. Slip resistance up to R13 according to DIN 51130.



Light Duty
Recommended for light duty use in industrial environments.



Barefoot
Pleasantly soft and warm under bare feet.



Drainage
Open construction matting allows for liquids and debris to pass through, providing secure footing in a wet environment.



Modular System
Interlocking mats allow on-site customization with snap together units that can be assembled in any shape or form, as standalone mats or wall to wall configurations.



Cleaning
Suitable for cleaning with high pressure (hot) water jet.

Notrax® Product Testing

All Notrax® Floor Matting Products are subject to rigorous testing by independent laboratories prior to their introduction to the market. Our Product Testing Charts show the following relative comparisons between the Notrax® mats featured in each category of this brochure:

Wear resistance

Indicates the time it takes for a mat to lose its functionality. This is an accelerated wear test where the results are expressed in total weight loss of material when subjected to 5000 cycles

under an abrasion wheel. The higher the pointer in the test chart, the greater its resistance to wear.

Slip resistance

Indicates the slip resistance of a mat. This test measures the force required to cause slippage of a load across the surface material. The coefficient is the ratio of force required divided by the weight. The higher the pointer in the test chart, the greater the coefficient of friction ratio, thus the better the slip resistance of a mat.

Anti-fatigue

Indicates the degree of comfort a mat provides. This test starts by measuring the original thickness of a mat. Then compression is applied and the

thickness under this load is measured again. The difference between the two measurements is called deflection. The higher the pointer in the test chart, the better its anti-fatigue properties.

Example Product Testing Chart

PRODUCT TESTING

Wear resistance

Slip resistance

Anti-fatigue

GOOD BETTER BEST

Notrax® Floormatting

Notrax® is often referred to as one of the pioneers in anti-fatigue matting design and manufacturing. This is not surprising because since our founding in 1948, we have been committed to making quality products and optimizing processes. Notrax® offers the perfect solution for standing workers because, like no other producer of mats, we understand the difference of perceptions of workers as well as the variety of workplace conditions that exist.

Anti-fatigue mats come in various types and materials for industrial or commercial applications. Most anti-fatigue matting is a combination of an ergonomic pattern and a cushioning underlay. The cushioning causes constant subconscious balance checks and micro movements that stimulate blood flow through the legs and lower extremities. This results in better circulation and less fatigue. The cushioning underlay insulates the feet from the hard surface, cold floors, vibrations, moisture and sound.

Why all these different mats?

Although the outcome of studies in favour of using mats is perfectly clear, the effectiveness remains subject to the perception of workers. The physical size of the worker, and their own preferences as to what is comfortable, will cause different mats to be selected. A person weighing 90 kg may prefer a different mat than someone who only weighs 60 kg.

Besides the softness/hardness, also important to watch is worker's freedom of movement. While the anti-slip function is important (1 out of every 6 workplace injuries is related to slip or fall accidents, translating into 35% of all days lost for time off for medical recovery), easy twist-turns are just as important.

Specialized applications may also require additional benefits such as anti-slip, oil resistant, fire retardant, chemical resistant, static dissipative, or anti-microbial.

Product Innovation

Superior Manufacturing Group is market leader in anti-fatigue and safety matting. Our brand of Notrax® floor matting has become synonymous with quality, flexibility and customer service. What started as a small family-owned mat repair company has quickly grown to a global company in the design and manufacturing of anti-fatigue and safety matting for industrial and commercial applications.

As the industry and manufacturing processes evolve, so do our matting products. We are constantly developing new products to meet the changing needs of the industry. We focus on customer problems and working together with them to create matting solutions that resolve the issue. Our innovations team continues to design state-of-the-art products through intense research and development using new technologies, new design techniques and new ideas.

Notrax® products are sold globally through our trusted distributor network of matting experts, operating in niche segments of ergonomics, cleaning and hygiene, health and safety, industrial supplies, installation experts, and many more. Understanding and responding to the markets' specific needs reflects our interest and pleasure in serving our distributors and their customers. Examples of this include the development of mass customization capabilities and online integration with customers. As one of the world's largest integrated manufacturers of professional floor matting products, our belief in strong relationships is the foundation of our business.



Founded in 1948 by Charles J. Wood (far right).



Barendrecht, The Netherlands - Production and Logistics



Chicago, Illinois - Rubber Production and Logistics



Production in Barendrecht, The Netherlands.

With facilities in Europe and the United States, we constantly seek to reduce the environmental impact of our processes. It means that we aim to grow our business in an environmentally responsible manner, and we do this by focusing on diminishing waste, using recycled materials where possible, and by obtaining more materials from sustainable sources.

The "Lean" organization of our operations not only enables us to stay competitive and provide fast service, it also enables our customers to participate in a joint effort to reduce the carbon footprint simply by making use of our electronic purchasing and invoicing services and drop shipment capabilities.

R.E.A.C.H.

REACH is the European Community Regulation on chemicals and their safe use (EC 1907/2006). It deals with the Registration, Evaluation, Authorisation and Restriction of Chemical substances. The law entered into force on 1 June 2007 assigns manufacturers the responsibility of providing high level human and environmental protection from the use of chemicals in manufacturing. Notrax® does not use any substances currently included on the SVHC (Substances of Very High Concerns) list under REACH, including Di-octyl phthalate (DOP) plasticizer. Further information about our stand on sustainability can be obtained at www.buynotrax.eu for registered distributors or upon email request to europa@notrax.com.

Product Warranty

All Notrax® floor matting is manufactured of the highest quality material and workmanship. Dependability and service of our products are guaranteed against defects in material for one year from date of purchase provided manufacturer's recommended usage and maintenance is followed. Buyer has the responsibility to determine the suitability of the product and assumes any liability in connection with such use. Seller shall not be liable for damages in excess of purchase price of product. In the unlikely event of a Notrax product being faulty, a full refund or replacement (based on manufacturer's discretion) will be made. Warranty claims must be authorized for return and shipped prepaid for inspection and evaluation. For information about floor matting maintenance: www.notrax.eu/news.

This catalogue highlights the solutions Notrax® offers for your ergonomic anti-fatigue and safety matting applications. Feel free to also ask for the latest Notrax® brochure for Dust Control Matting for entrance ways.

Thank you for choosing Notrax®.

René Vieven
Managing Director

Superior Manufacturing Group-Europe B.V.



Calhoun, Georgia - Carpet Production and Logistics



Moselle, Mississippi - Plastics Production and Logistics

Benefits of anti-fatigue matting

In many industries, employees are required to work while standing, walking and/or carrying loads. Experts agree that matting can significantly improve productivity and employee satisfaction while reducing absenteeism and chronic illnesses related to long term standing.

How an anti-fatigue mat works is well described in an article that was published in the April 1999 issue of "Occupational Health & Safety", written by James M. Kendrick: "Anti-fatigue mats are engineered to make the body naturally and imperceptibly sway, which encourages subtle movement by calf and leg muscles. This promotes blood flow and keeps it from stagnating in the veins, which causes workers to feel fatigued."

Standing on hard surfaces for long periods can lead to several problems. First, standing causes muscles to constrict, which reduces the blood flow. This makes muscles and joints hurt, and it causes blood to stagnate. In addition, long-term standing causes pronation, or excessive flattening of the foot. While this can be simply tiring and a bit painful, it can also lead to plantar fasciitis and other serious foot conditions. Lower back pain is highest in workers who stand 4 hours or more per day.

As noted by Mr. Kendrick, the cushioning effect of anti-fatigue matting allows continuous micro-movements of the feet, which minimizes blood pooling in the legs. This may also go hand-in-hand with the desire to reduce slips and falls. The floor mat may also provide relief from cold/damp conditions. There is good reason to believe that reduction of fatigue also reduces the possibility of accidents and improves general work efficiency. There are fewer days lost to injuries, fewer medical claims, and compliance with new health and safety requirements.

Too much cushioning can have a negative effect. Too great an amount of softness or "give" will actually cause excessive fatigue because it overworks the muscles. Think of it like jogging on the beach as an extreme example of this concept. Notrax® floor mats are made of specific formulations and designs that provide fatigue relief which will contribute to increased productivity and employee satisfaction.



Scientific support

Lower extremity discomfort and fatigue from forced long term standing and walking is a problem often identified, but seldom documented. Early studies such as Morgora (1972) showed that the incidence of low back pain was highest in those workers who stood regularly every working day for periods of more than four hours and Bousseman et al. (1982) brought to light that long term standing is a direct cause of pain and discomfort.

Subsequent research carried out by Dr. Mark Redfern and Dr. Don Chaffin at the Centre for Ergonomics, University of Michigan in 1988, and Paula Hinnen and Stephan Konz at the Department of Industrial Engineering, Kansas State University, 1994, made observations of the difference between standing on hard floors versus standing on soft floors. Both their studies concluded that mats significantly affect fatigue and comfort in different body regions.

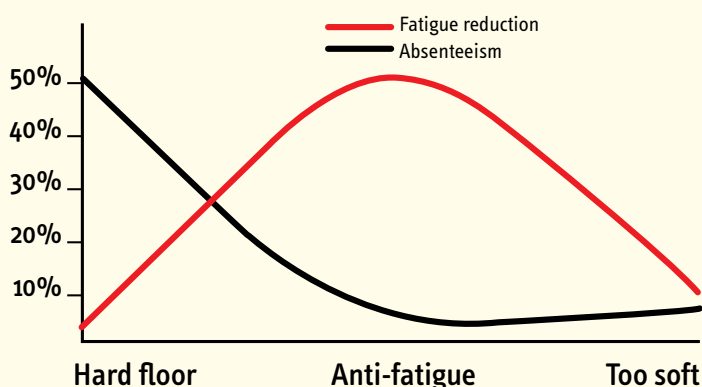


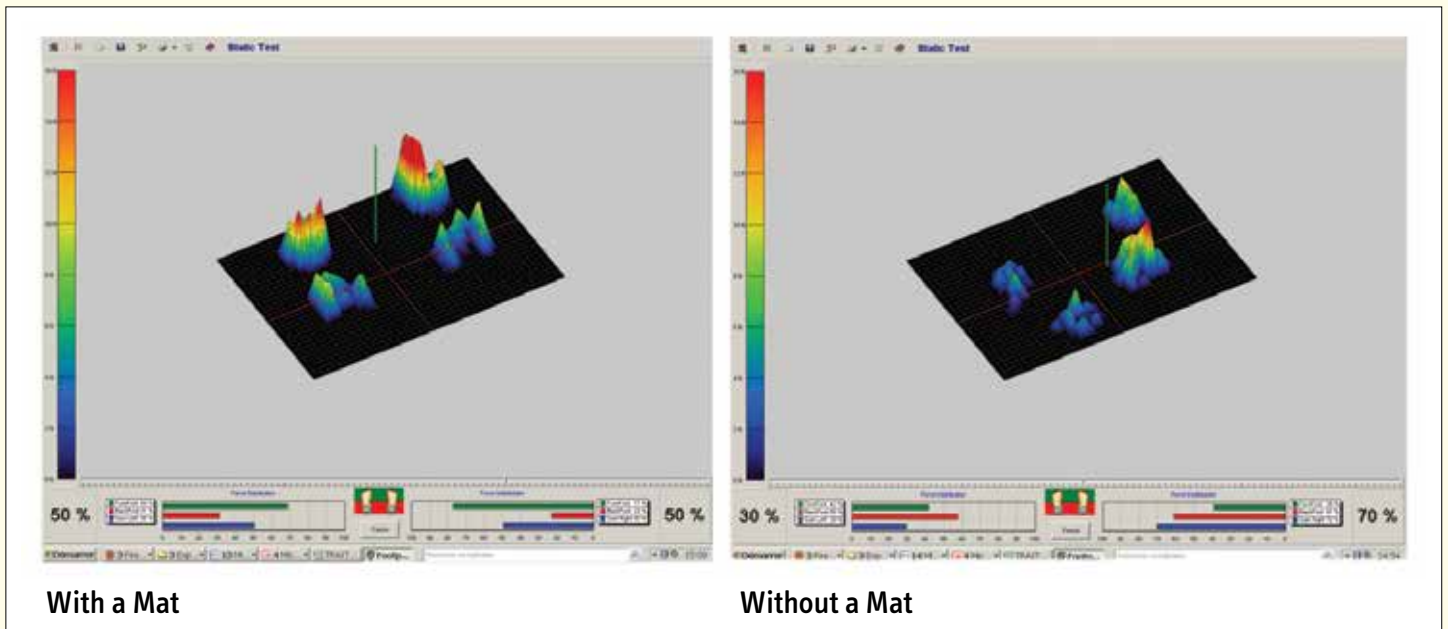
A recent study by Prof. Dr. Redha Taiar (2011) at the University of Reims in France illustrated how human mechanics in a working environment are impacted through the use of anti-fatigue mats. By observing workers and measuring foot pressure for employees standing for long periods, Prof. Taiar was able to identify two causes of fatigue and therefore a two-pronged approach in combating the muscular-skeletal disorders associated with long-term standing.

One cause of fatigue: the Cinderella Fibres

The consequences of long term standing on a muscular-skeletal level begin with training muscles. For the human body to remain in an upright position, namely standing, we have trained our muscles in what becomes an automatic system. Basically this posture state (upright) is engrained in our neuromuscular program, and each time we use the same muscles to do the work, without us being conscience about this. This 'automated' muscular functioning is recorded in the brain and will be systematically applied. The muscular fibres involved in this programming are also called « Cinderella fibres », because even if they are tired they do their job ...that's the start of muscular-skeletal troubles (pain, contractures, tendinitis...).

The effects of standing on anti-fatigue matting versus hard or too soft floors





With a Mat

Without a Mat

Another cause of fatigue: imbalance

In addition to overuse of the same muscles, when the system is out of balance, the muscles must work harder to search for balance and the quick reaction speed is maintained at the cost of energy (fatigue). So to maintain an upright position it is necessary to have a well-adapted postural balance to decrease pathologies and their consequences in the everyday work of the users. In a nutshell, to regain balance 'quick reaction / energy saving/ effectiveness', it is necessary to become aware of the different foot pressures on the ground and the most proper muscle action (from head to toe).

Prof. Tair emphasized that “without a mat there is a dysfunction in the balance of a person which can cause pathologies that are accelerated by a repetitive task and other constraining work”. Such unbalance is very harmful for the human body. The use of anti-fatigue mats enables correct balancing and a uniform distribution between the right and left leg.

Two causes: two-part solution

Taiar therefore recommends a two-part approach in reducing fatigue.

Firstly, the worker must initiate a variation in foot pressure to improve the upright standing position. This top down approach helps to eliminate the build-up of pressure points on the feet (Cinderella fibres). To achieve this, his advice to workers is to regularly change the pressure point inside the shoe.

Secondly, by using anti-fatigue mats made from the latest technological materials. This bottom up approach helps to eliminate pressure points from the floor by spreading weight evenly. The use of anti-fatigue mats corrects balance and restores uniform distribution between the right and left leg. The unique composition of anti-fatigue matting is an ergonomic pattern and a cushioning underlay which evenly distributes weight and stimulates continuous micro-movements of the feet minimizing blood pooling in the legs. Prof. Taiar’s findings confirmed that pains are substantially reduced with the use of anti-fatigue mats compared to the initial situation without mats.

Notrax® is a leading brand of anti-fatigue matting that was specifically tested by Prof. Dr. Taiar and shown to significantly reduce symptoms of fatigue.

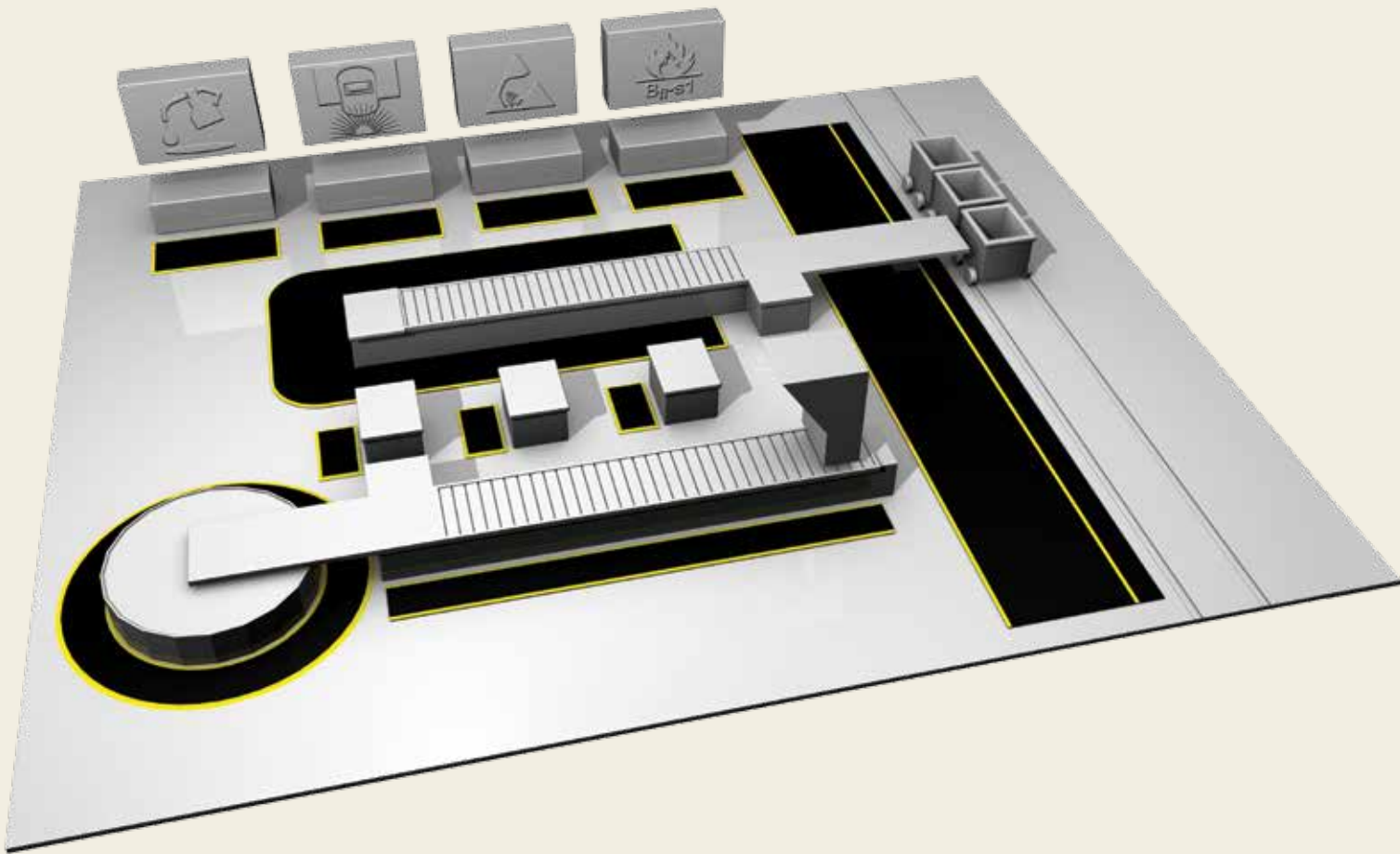


Workers agree

Feedback from employees was also used to support the research using observations from workers who compared working on anti-fatigue mats to working on the hard floor and noting their level of comfort and fatigue every hour during eight-hour shifts. One worker commented: “Less fatigue in the legs at the end of the day and less muscular and articular troubles, better absorption of weight.”

Prof. Dr. Redha Taiar is an expert in biomechanical, human locomotion, kinematic and kinetic analysis and biomedical technologies. For more details about his work: www.redha-taiar.com. A copy of said study can be obtained in English or French at www.buynotrax.eu for registered distributors or upon email request to europe@notrax.com.

Workplace Solutions for Dry Areas



Working environments and conditions vary for different companies and different industries. Planning an effective plant layout can increase efficiency and reduce cost. Notrax® has created several modular, linear and standalone anti-fatigue matting series that are completely customizable and can be adapted to any plant layout. Thereby also reducing fatigue, increasing productivity and reducing the risk of musculoskeletal disorders that lead to long term absence.

Many factory or assembly plant layouts have been traditionally designed for high worker and machine utilization. As technology, product developments and the market are changing so rapidly, layouts are being redesigned for quality and flexibility, the ability to quickly shift to different product models or to different production rates.

Many facilities have moved towards cellular manufacturing layouts within larger process layouts, automated materials-handling equipment, especially automated storage and retrieval systems, automated guided vehicle systems, automatic transfer devices, turntables and other product to person solutions.

U-shaped production lines allow workers to see the entire line and easily travel between workstations. This shape allows the rotation of workers among the workstations along the lines to relieve boredom and relieve work imbalances between workstations.

Additionally, teamwork and improved morale tend to result because workers are grouped in smaller areas and communication and social contact are thereby encouraged by more open work areas with fewer walls, partitions, or other obstacles to clear views of adjacent workstations.

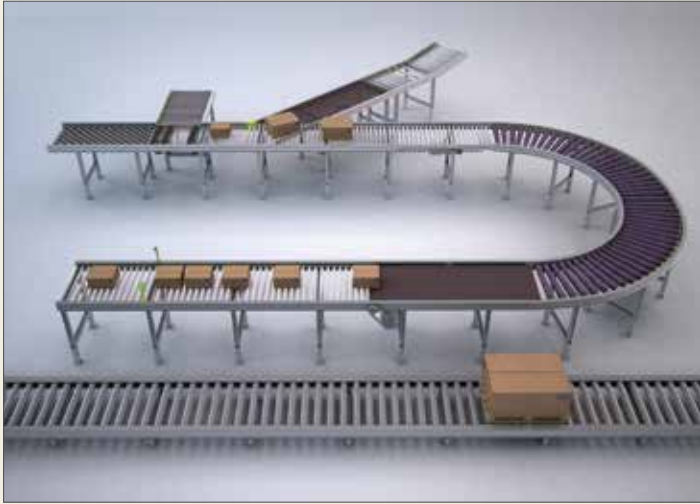
In many of these layouts, the worker's scope of work is limited to direct surroundings, along an assembly line or along a U-shape. Workstation ergonomics have therefore become even more important as work has become more specialized and repetitive.

Various matting solutions

Standalone mats are made in several standard sizes and are loose lay with no installation required which are ideal for individual workstations. All modular matting can be used as a freestanding mat or customized into just about any size to fit specific areas, around machinery or following assembly lines to create the most efficient and effective layout while ensuring the most efficient and ergonomic workstation for workers.

Modular mats can be easily assembled on-site with snap together units that can be assembled in any shape or form, even wall to wall configurations. Matting is also equipped with a tooled grid of cutting lines that makes further customization quick and easy. Custom configurations are tailor-made matting solutions that are made by our experience production team exactly to your design and dimensions.

Guide for Ordering Custom size Matting



- Custom-designs for any specific work station are possible.
- To order, simply provide a sketch that illustrates the shape, dimensions, and where the ramp edges are required.
- You will receive our CAD drawing for approval.
- Oversized mats are made in sections that interlock on site, to facilitate shipping and handling.

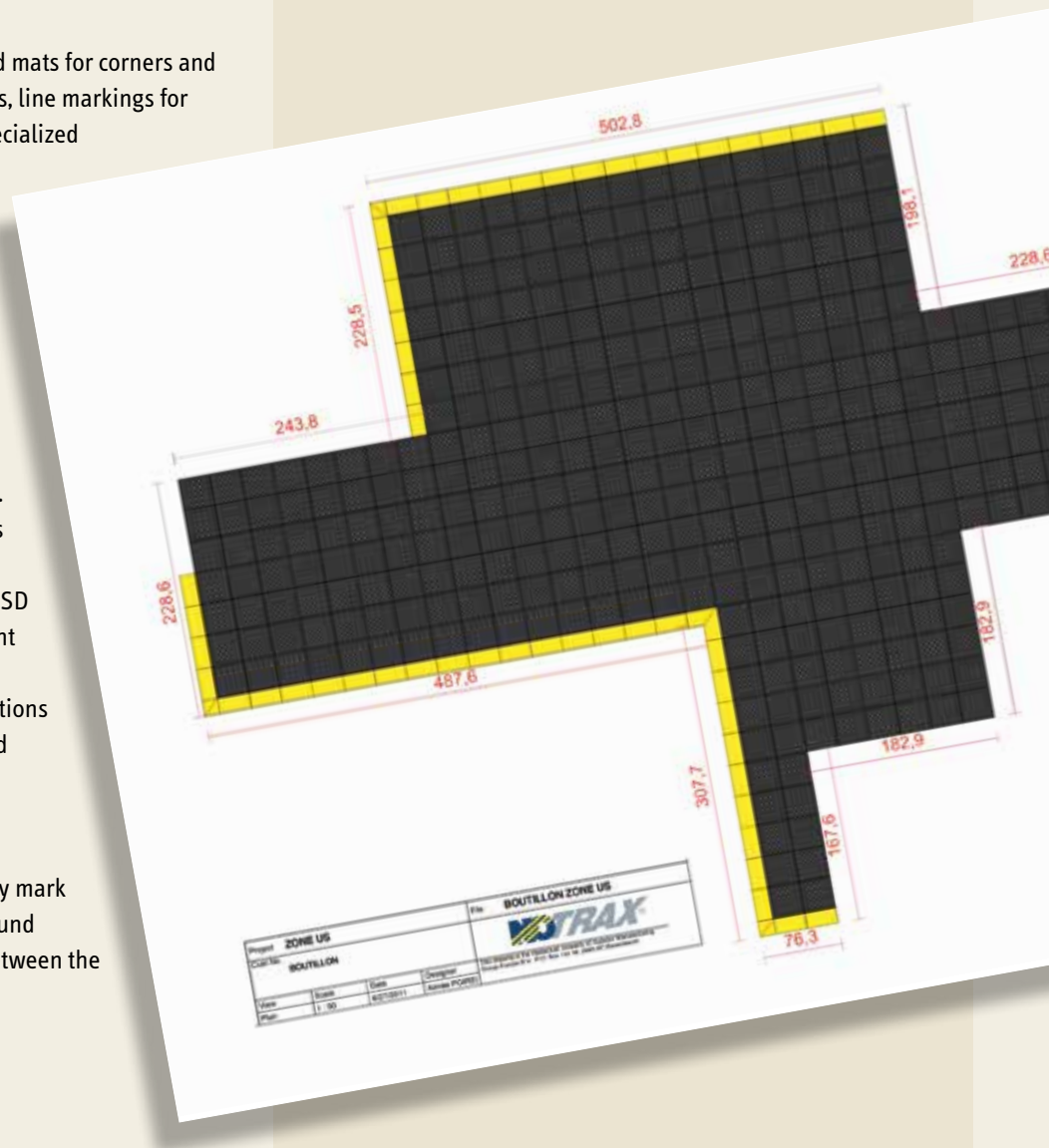
Accessories

A complete line of accessories including curved mats for corners and circles, bevelled safety edges in various colours, line markings for safety zones, boundaries or walkways, and specialized ESD grounding accessories, etc. finish off the matting installation.

Various materials and compounds

Notrax® industrial matting is manufactured to withstand harsh industrial environments. In order to achieve this, our modular mat solutions are manufactured in specialized compounds to meet the distinct needs of various industrial or production environments. This variation in compounds allows companies to select only their specialized product characteristics needed such as oil resistance, ESD electro static discharge protection, fire retardant matting for welding areas, or a combination thereof. This keeps matting for general applications affordable while offering extremely specialized matting solutions.

The compounds connect seamlessly for easy transitions. The Notrax® product stamps clearly mark each mat with the product number and compound characteristics making it easy to distinguish between the various rubber compounds.





SKYTRAX[®]

782 Sky Trax®

Top-of-the-line ergonomic experience, made available in custom lengths. Comfort, durability, and safety are united in this product, designed for those who are not willing to compromise in any of these criteria. Combination of extra hard wearing top surface and a very resilient microcellular vinyl base for maximum fatigue relief.

Ergonomic benefit derived from unique bubble design coupled with 19 mm thick worker platform. Favours slip resistance and freedom of movement; tested R9 according to DIN51130 and BG-rule BGR181. Featured with RedStop™ slip resistant backing to prevent mats from shifting. Available yellow borders along sides comply with OSHA code 1910-144. Bevelled edges on all four sides to minimize risk of tripping. Lifetime warranty on Uni-Fusion™ lamination technology.

Recommended uses:

- Heavy duty - dry industrial environments

Specifications:

- 5 mm of PVC top surface permanently bonded onto a 14 mm resilient backing of microcellular vinyl.
- Overall thickness: 19 mm.
- Weight: 6.9 kg per m².
- Fire classification Cf1-S2 tested according to DIN EN ISO 13501.
- Free of DOP, free of DMF, free of ozone depleting substances, free of silicone and free of heavy metals.

Colours:

- Grey, Black, Black/yellow

Stock sizes:

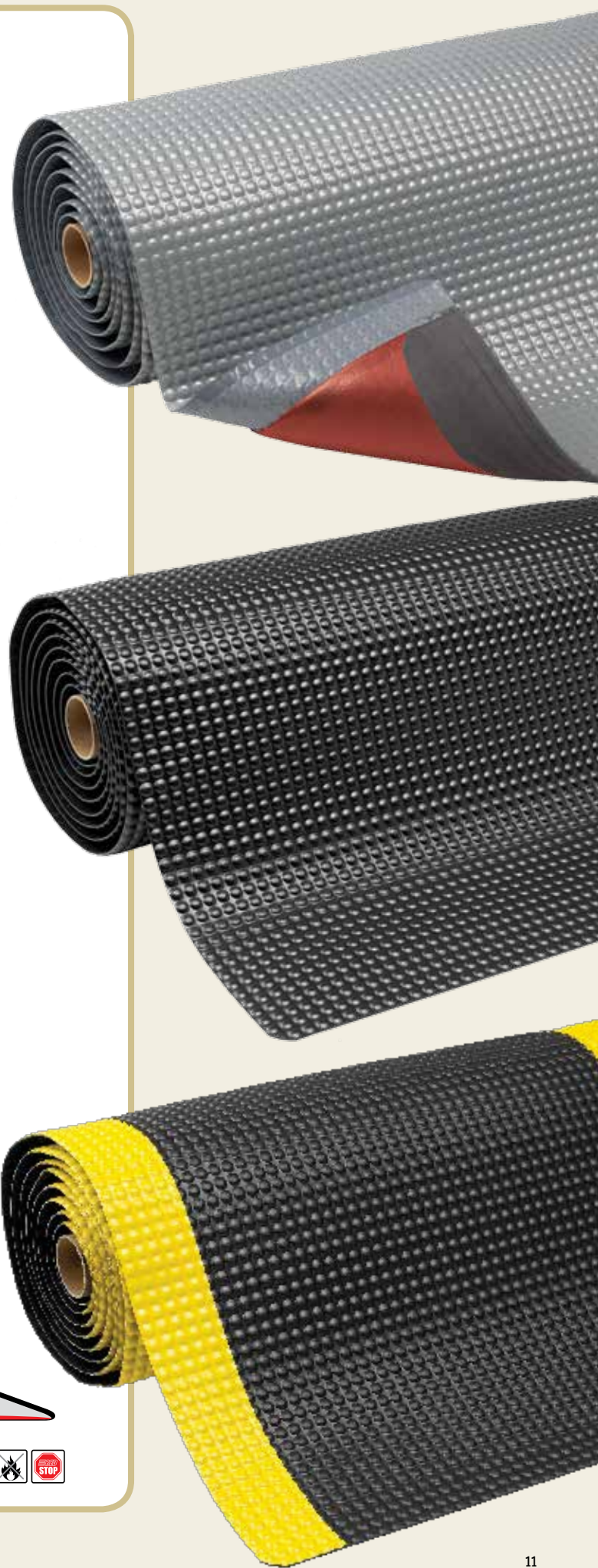
- 60 cm x 91 cm
- 91 cm x 150 cm
- 91 cm x 2 m
- 91 cm x 3 m
- 91 cm x 6 m

Full rolls 21.9 m:

- 60 cm, 91 cm, 122 cm and 152 cm widths

Custom lengths:

- 60 cm, 91 cm, 122 cm and 152 cm widths



PRODUCT TESTING



CUSHION AX[®]



479 Cushion Trax®

Ergonomic benefit derived from 14 mm thick worker platform comprised of a long wearing top surface laminated onto a resilient microcellular vinyl base for maximum durability and fatigue relief. Diamond plate pattern provides traction while allowing easy twist turns.

Slip resistance R10 according to DIN51130 and BG-rule BGR181. Tested and certified by the National Floor Safety Institute (NFSI). Featured with RedStop™ slip resistant backing to prevent mats from shifting. Available yellow borders along sides comply with OSHA code 1910-144. Bevelled edges on all four sides to minimize risk of tripping. UniFusion™ technology, engineered to resist in the harshest work environments.

Recommended uses:

- Heavy duty - dry industrial environments

Specifications:

- 4.7 mm PVC top surface permanently bonded onto a 9.3 mm resilient backing of microcellular vinyl.
- Overall thickness: 14 mm.
- Weight: 5.5 kg per m².
- Fire classification Bfl-S1 tested according to EN 13501-1.
- Coefficient of friction NSF1 certified.
- Free of DOP, free of DMF, free of ozone depleting substances, free of silicone and free of heavy metals.

Colours:

- Grey, Black, Black/yellow

Stock sizes:

- 60 cm x 91 cm
- 91 cm x 150 cm
- 91 cm x 3 m
- 91 cm x 6 m

Full rolls 22.8 m:

- 60 cm, 91 cm, 122 cm and 152 cm widths

Custom lengths:

- 60 cm, 91 cm, 122 cm and 152 cm widths



PRODUCT TESTING



MARBLE SOFT™



470 Marble Sof-Tyle™

Smooth rubber top surface embedded with a marbled pattern. Rubber naturally provides traction to resist slips and falls. Long wearing top surface laminated on to a resilient microcellular vinyl base for maximum durability coupled with fatigue relief. Resistant to most industrial fluids and chemicals.

Featured with RedStop™ slip resistant backing to prevent mats from shifting. Bevelled edges on all four sides to minimize risk of tripping. UniFusion™ technology, engineered to resist in the harshest work environments.

Recommended uses:

- Heavy duty - dry areas in industrial or tertiary industries, laboratories. Suitable for commercial environments including hotels, reception desks, shop counters, department stores, banks, restaurants, etc.

Specifications:

- Rubber top surface permanently bonded onto a 9.3 mm resilient backing of microcellular vinyl.
- Overall thickness: 12.7 mm.
- Weight: 5.8 kg per m².
- Coefficient of friction NSF1 certified.
- Free of DOP, free of DMF, free of ozone depleting substances, free of silicone and free of heavy metals.

Colours:

- Grey, Black, Beige

Stock sizes:

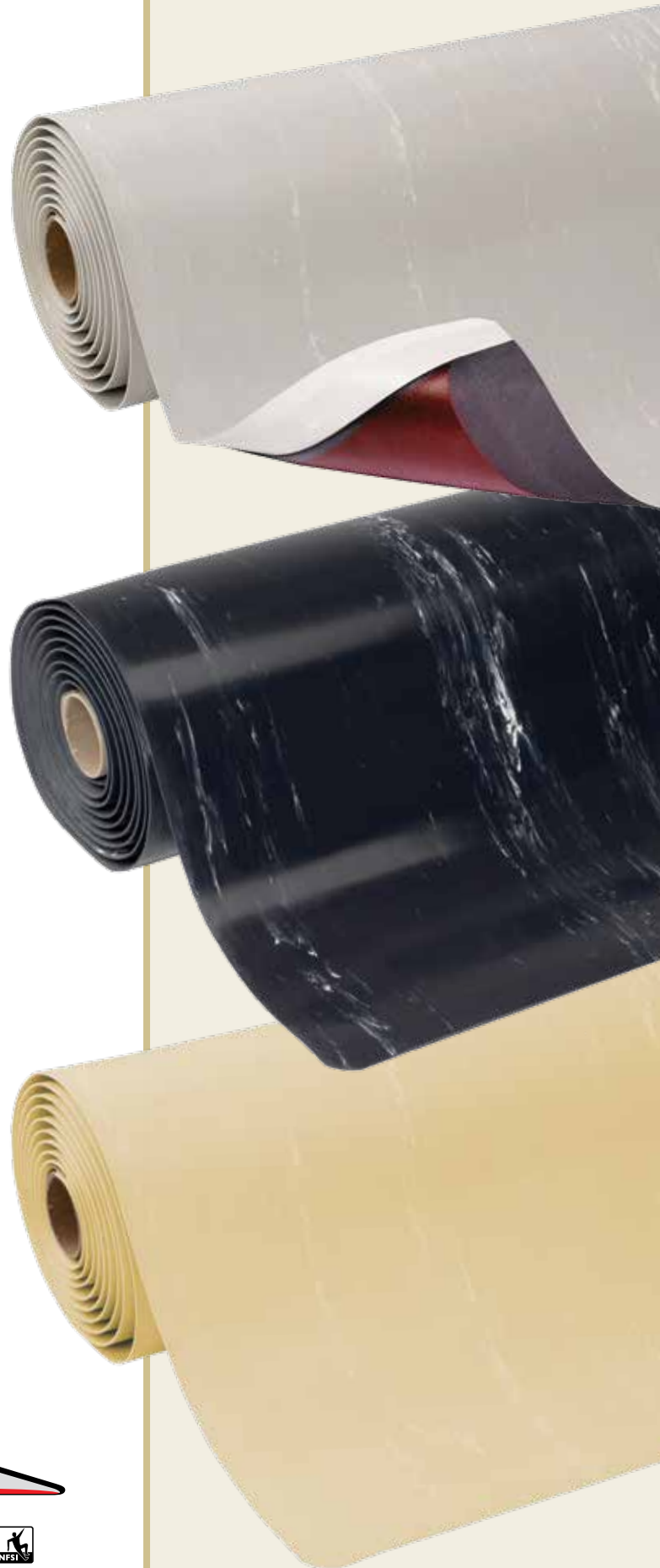
- 60 cm x 91 cm
- 91 cm x 150 cm

Full rolls 22.8 m:

- 60 cm, 91 cm, and 122 cm widths

Custom lengths:

- 60 cm, 91 cm, and 122 cm widths



PRODUCT TESTING



DYNA-SHIELD™



Dyna-Shield™

Exceptional worker comfort due to 12.7 mm thick specially formulated compound. Protective layer of exclusive Dyna-Shield™ extends service life by 50% compared to regular microcellular vinyl*. Choice of four patterns each facilitating ergonomic motion with different priorities. Available yellow borders along sides comply with OSHA code 1910-144. All 4 sides are bevelled and sealed to minimize tripping hazards.

Recommended uses:

- Medium duty - dry areas

Specifications:

- Fire rating Class 2 according NFPA Safety Code 101.
- Slip resistance R10 according to DIN51130 and BG-rule BGR181.
- Thickness: 12.7 mm.
- Weight: 4 kg per m².
- Free of DOP, free of DMF, free of ozone depleting substances, free of silicone and free of heavy metals.

* Supported by independent laboratory testing.

Stock sizes:

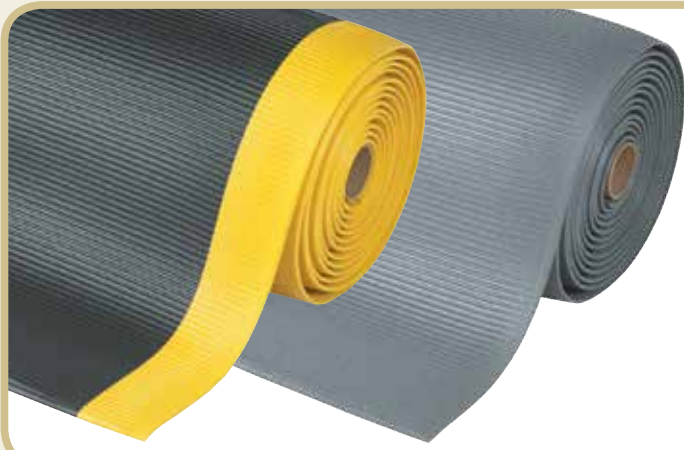
- 60 cm x 91 cm
- 91 cm x 150 cm

Full rolls 18,3 m:

- 60 cm, 91 cm, and 122 cm widths

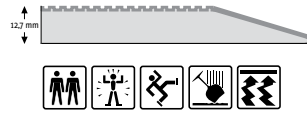
Custom lengths:

- 60 cm, 91 cm, and 122 cm widths



406 Crossrib Sof-Tred™

- Side-to-side wide ribs provide traction and easy to sweep clean
- Colours: Black/yellow, Grey



PRODUCT TESTING

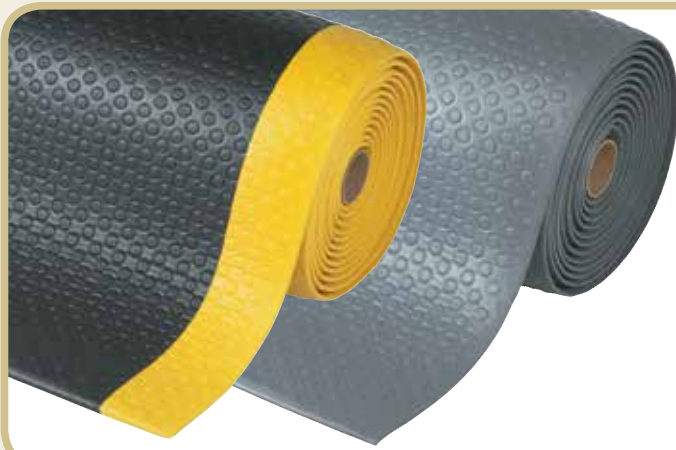


413 Gripper Sof-Tred™

- Lengthwise corrugated rib pattern for sure footing
- Colours: Black/yellow, Grey



PRODUCT TESTING



417 Bubble Sof-Tred™

- Unique bubble design provides exceptional comfort
- Colours: Black/yellow, Grey



PRODUCT TESTING



419 Diamond Sof-Tred™

- Non-directional "Deck Plate" pattern allows freedom of movement
- Colours: Black/yellow, Grey, Black



PRODUCT TESTING



Comfort

Ergonomic benefit derived from 9.4 mm thick worker platform comprised of a construction of microcellular vinyl consisting of millions of air bubbles that provide basic worker comfort. All four sides are bevelled and sealed to minimize tripping hazards.

Specifications:

- Overall thickness: 9.4 mm.
- Slip resistance R10 according to DIN51130 and BG-rule BGR181.
- Fire rating Class 2 according NFPS Safety Code 101.
- Free of DOP, free of DMF, free of ozone depleting substances, free of silicone and free of heavy metals.

Stock sizes:

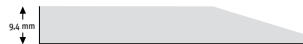
- 60 cm x 91 cm
- 91 cm x 150 cm

Full rolls 18,3 m:

- 60 cm, 91 cm, and 122 cm widths

Custom lengths:

- 60 cm, 91 cm, and 122 cm widths





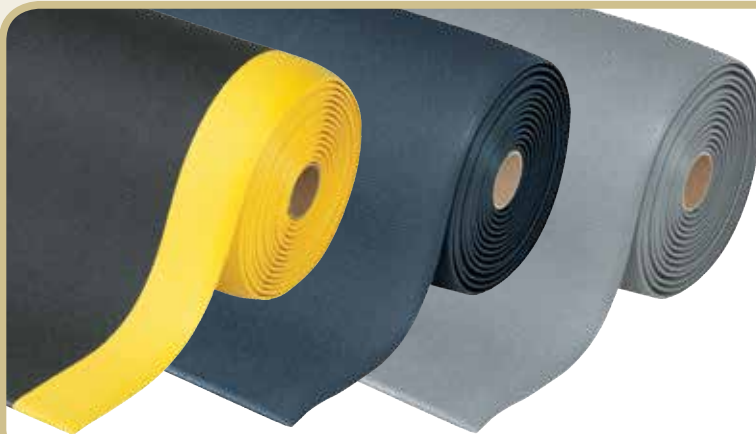
408 Airug Plus™

Recommended uses:

- Medium duty - dry areas
- Ribbed pattern enhances traction
- Weight: 2.8 kg per m²
- Colours: Black/yellow, Black, Grey



PRODUCT TESTING



409 Sof-Tred Plus™

Recommended uses:

- Medium duty - dry areas
- Pebble pattern provides non-directional traction and is easy to clean
- Weight: 2.8 kg per m²
- Colours: Black/yellow, Black, Grey



PRODUCT TESTING



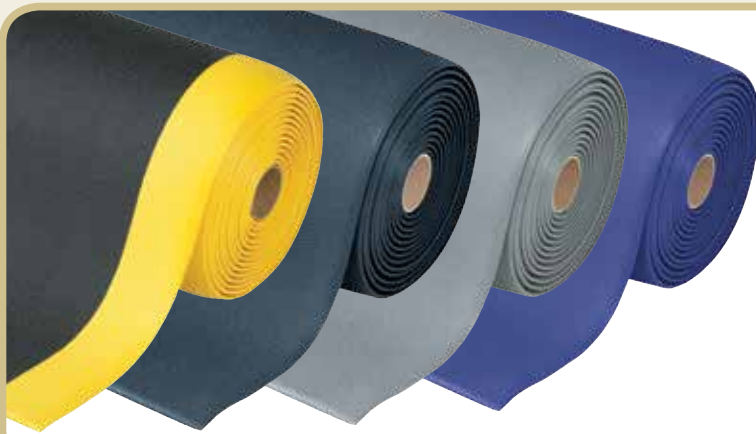
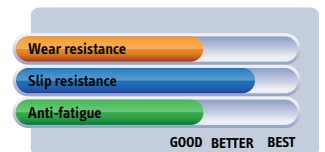
410 Airug®

Recommended uses:

- Light duty - dry areas
- Ribbed pattern enhances traction
- Weight: 2.3 kg per m²
- Colours: Black/yellow, Black, Grey



PRODUCT TESTING



411 Sof-Tred™

Recommended uses:

- Light duty - dry areas
- Pebble pattern provides non-directional traction and is easy to clean
- Weight: 2.3 kg per m²
- Colours: Black/yellow, Black, Grey, Blue



PRODUCT TESTING



SAFETY STANDARDS



649 Safety Stance Solid™

High quality anti-fatigue matting for heavy duty industrial environments. Unique DiamondGrid™ surface pattern ensures sure footing while channels drain incidental oil exposure. Made of 100% nitrile rubber compound designed to withstand industrial oils and harsh chemicals. Suited for multi-shift operations.

Closed design ensures easy cleaning and prevents small items from falling under the mat.

Ergonomic benefit derived from 20 mm thick resilient worker platform. Standard size mats are loose lay and require no installation. Highly visible nitrile rubber orange coloured borders included on 3 sides for added safety. Non-shifting. Free of silicone therefore safe for vehicle painting facilities.

Recommended uses:

- Heavy duty - dry industrial environments

Specifications:

- Heavy duty 100% nitrile rubber compound.
- Resistant to industrial oils and harsh chemicals.
- Orange coloured borders included on 3 sides comply with OSHA Code 1910-144.
- Slip resistance R10 according to DIN51130 and BG-rule BGR181.
- Overall thickness: 20 mm.
- Weight: 15 kg per m².
- Free of DOP, free of DMF, free of ozone depleting substances, free of silicone and free of heavy metals.

Colours:

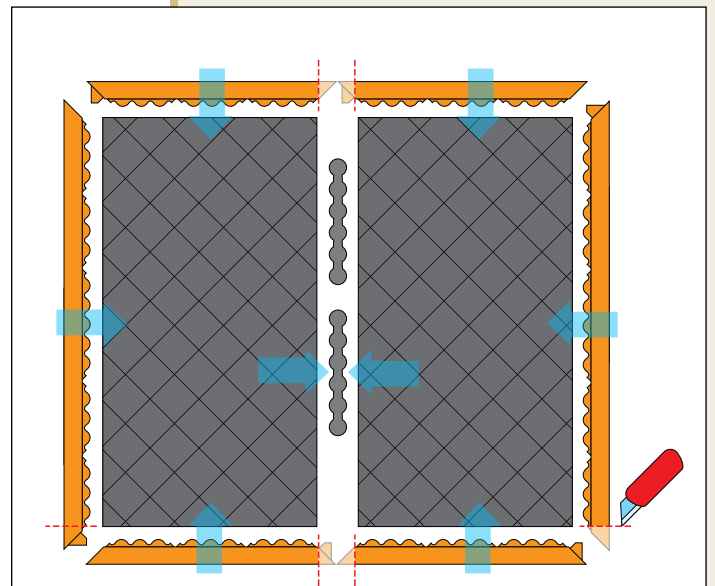
- Black

Stock sizes with 3 orange borders:

- 66 cm x 102 cm
- 97 cm x 163 cm
- 97 cm x 315 cm

Custom sizes:

- 649 Safety Stance Solid™ Custom is available on demand in custom sizes and configurations



649 Safety Stance Solid™ Custom

Custom sizes. Calculated on square meter basis

PRODUCT TESTING

Wear resistance

Slip resistance

Anti-fatigue

GOOD BETTER BEST





CUSHION EASE SOLID

Cushion Ease Solid™ Series

Heavy duty rubber tiles of 91 cm x 91 cm can be easily assembled for coverage of large areas or individual work stations. Ergonomic benefit derived from a 19 mm thick worker platform with a closed anti-slip pebble structure surface for maximum anti-fatigue comfort in dry industrial environments.

These interlocking mats allow on-site customization. Square snap together units can be assembled effortlessly and laid out from wall to wall or as islands, in any direction or shape. Superb anti-fatigue properties due to its unique design underneath and high quality resilient rubber compounds. Compatible with patented MD Ramp System™ for smart safety bevelling solutions; allow out and inside corners.

Recommended uses:

- Heavy duty - dry industrial areas

Specifications:

- Heavy duty rubber compound.
- Overall thickness: 19 mm.
- Weight: 12.7 kg per mat.
- Slip resistance rating R9 according to DIN 51130.
- Free of DOP, free of DMF, free of ozone depleting substances, free of silicone and free of heavy metals.

Colours:

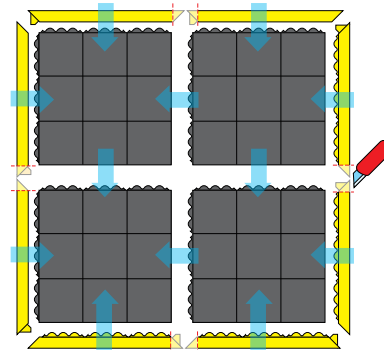
- Black

Stock sizes:

- 91 cm x 91 cm

Accessories:

- MD Ramp System™ Nitrile male and female attachable bevels 91 cm, black or yellow



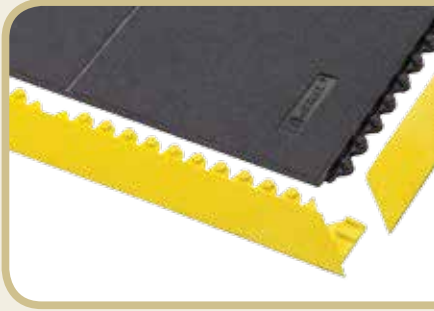


556 Cushion Ease Solid™

- 100% natural rubber compound
- General purpose applications



PRODUCT TESTING



656S Cushion Ease Solid™ Nitrile

- 100% nitrile rubber compound
- Resistant to most industrial oils



PRODUCT TESTING

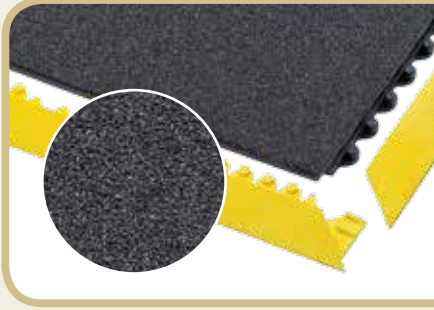


656SFR Cushion Ease Solid™ Nitrile FR

- 100% nitrile rubber compound
- Fire classification Bfl-S1 tested according to EN 13501-1
- Resistant to most industrial oils and suitable for welding areas



PRODUCT TESTING



856SFR Cushion Ease Solid™ Nitrile GSII® FR

- 100% nitrile rubber compound.
- With abrasive Grip Step® coating for extra adherence in extremely slippery areas
- Fire classification Bfl-S1 tested according to EN 13501-1
- Resistant to most industrial oils and suitable for welding areas



PRODUCT TESTING



558 Cushion Ease™ ESD

- Static dissipative natural rubber compound
- Meets IEC61340-4-1 (category DIF), measured resistance Rg 10⁶ - 10⁹ Ω, Rp 10⁶ - 10⁹ Ω
- Optional grounding cord



PRODUCT TESTING

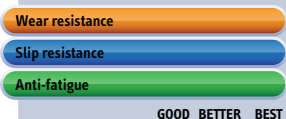


661S Cushion Ease Solid™ ESD Nitrile FR

- Static dissipative 100% nitrile rubber compound
- Meets IEC61340-4-1 (category DIF), measured resistance Rg 10⁶ - 10⁹ Ω, Rp 10⁶ - 10⁹ Ω
- Fire classification Bfl-S1 tested according to EN 13501-1
- Resistant to most industrial oils and suitable for welding areas
- Optional grounding cord



PRODUCT TESTING



SKYWALKER HD™

Skywalker HD™ Series

Heavy duty rubber tiles of 91 cm x 91 cm can be easily assembled for coverage of large areas or individual work stations. Ergonomic benefit derived from a 13 mm thick worker platform with a bubble pattern for maximum fatigue relief in dry industrial environments.

The unique design and craftsmanship make the mat easy to handle and easy to install on site. A tooled grid of 30 cm x 30 cm sections on the underside of the mat makes further customization quick and easy. Attachable bevelled edges prevent tripping and allow inside and outside corners.

Recommended uses:

- Heavy duty - dry industrial areas

Specifications:

- Heavy duty rubber compound.
- Overall thickness: 13 mm.
- Weight: 10 kg per mat.
- Slip resistance rating R9 according to DIN 51130.
- Free of DOP, free of DMF, free of ozone depleting substances, free of silicone and free of heavy metals.

Colours:

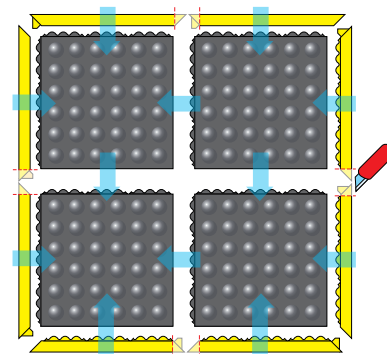
- Black

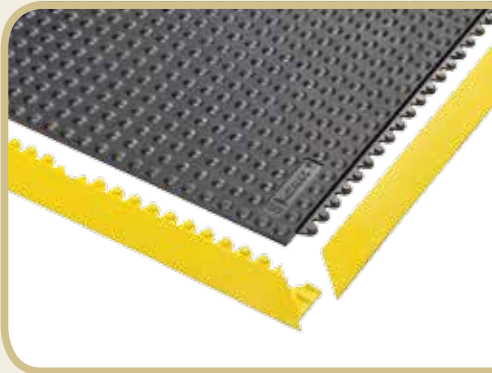
Stock sizes:

- 91 cm x 91 cm

Accessories:

- Skywalker HD™ Safety Ramp Nitrile male and female attachable bevels 91 cm, black or yellow.
- Skywalker HD Yellow™ Safety line for marking safety barriers, working zones, walkways and safety lines.
- Skywalker HD i-Curve™ and o-Curve™ series of wedge shaped mats are compatible for creating finished edges, rounded corners, S-curves and full circles. Available in the matching 5 rubber compounds.



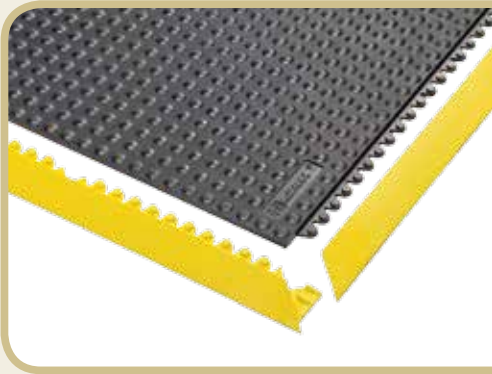


460 Skywalker HD™

- 100% natural rubber compound
- General purpose applications



PRODUCT TESTING

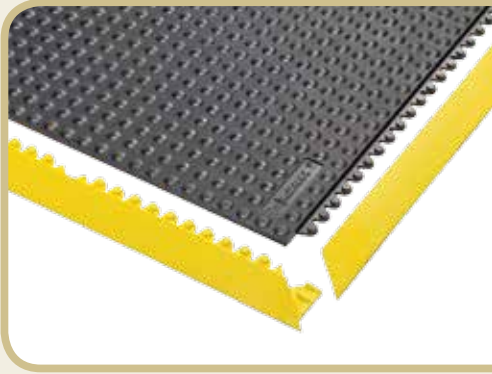


462 Skywalker HD™ Nitrile

- 100% nitrile rubber compound
- Resistant to most industrial oils



PRODUCT TESTING

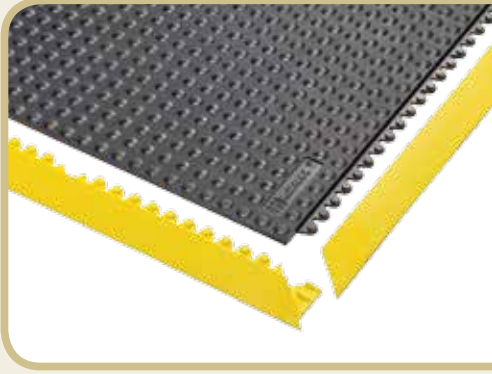


463 Skywalker HD™ ESD

- Static dissipative natural rubber compound
- Meets IEC61340-4-1 (category DIF), measured resistance $R_g 10^6 - 10^9 \Omega$, $R_p 10^6 - 10^9 \Omega$



PRODUCT TESTING

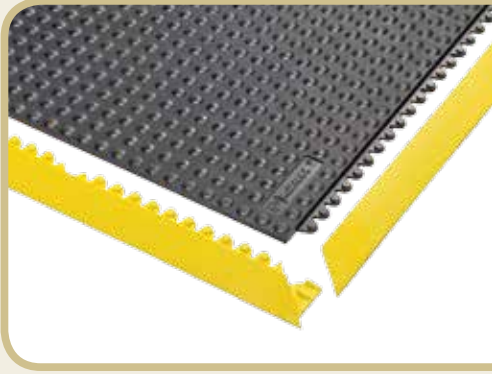


464 Skywalker HD™ ESD Nitrile FR

- Static dissipative 100% nitrile rubber compound
- Meets IEC61340-4-1 (category DIF), measured resistance $R_g 10^6 - 10^9 \Omega$, $R_p 10^6 - 10^9 \Omega$
- Fire classification Bfl-S1 tested according to EN 13501-1
- Resistant to most industrial oils and suitable for welding areas



PRODUCT TESTING



465 Skywalker HD™ Nitrile FR

- 100% nitrile rubber compound
- Fire classification Bfl-S1 tested according to EN 13501-1
- Resistant to most industrial oils and suitable for welding areas



PRODUCT TESTING





SKYWALKER

Skywalker HD™ Accessories

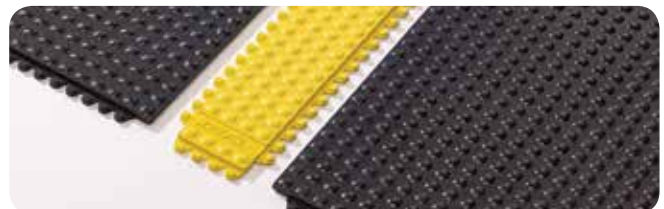
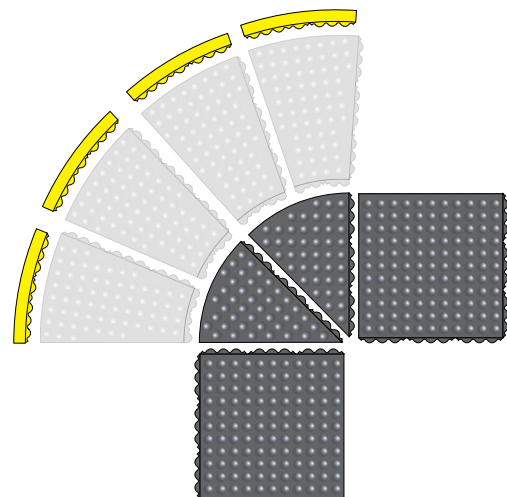
The Skywalker HD™ accessories maintain the same feel as the Skywalker HD™ mats with an ergonomic bubble pattern and matching rubber compounds. This seamless integration allows for unlimited configuration possibilities. Made of heavy duty rubber compounds that are fully compatible with the Skywalker HD™ series.

Recommended uses:

- Heavy duty - dry areas

Specifications:

- Heavy duty rubber compound.
- Overall thickness: 13 mm.
- Slip resistance rating R9 according to DIN 51130.
- Free of DOP, free of DMF, free of ozone depleting substances, free of silicone and free of heavy metals.



469 Skywalker HD Yellow™

- Yellow safety line for marking borders, walkways, zones and safety barriers
- 100% nitrile rubber compound
- Resistant to most industrial oils

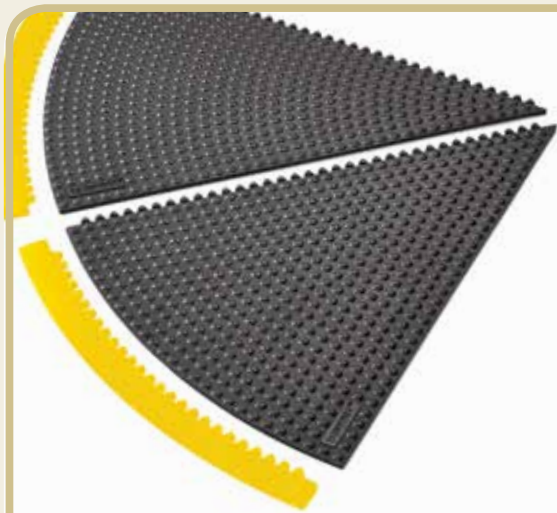
Stock sizes:

- 10 cm x 91 cm

Colours:

- Yellow





430 Skywalker HD™ i-Curve

- 100% natural rubber compound
- General purpose applications



432 Skywalker HD i-Curve™ Nitrile

- 100% nitrile rubber compound
- Resistant to most industrial oils



433 Skywalker HD i-Curve™ ESD

- Meets IEC61340-4-1 (category DIF), measured resistance $R_g 10^6 - 10^9 \Omega$, $R_p 10^6 - 10^9 \Omega$
- Static dissipative natural rubber compound



434 Skywalker HD i-Curve™ ESD Nitrile FR

- Meets IEC61340-4-1 (category DIF), measured resistance $R_g 10^6 - 10^9 \Omega$, $R_p 10^6 - 10^9 \Omega$
- Static dissipative nitrile rubber compound
- Fire classification Bfl-S1 tested according to EN 13501-1
- Resistant to most industrial oils and suitable for welding areas



435 Skywalker HD i-Curve™ Nitrile FR

- Resistant to most industrial oils and suitable for welding areas
- Fire classification Bfl-S1 tested according to EN 13501-1
- 100% nitrile rubber compound



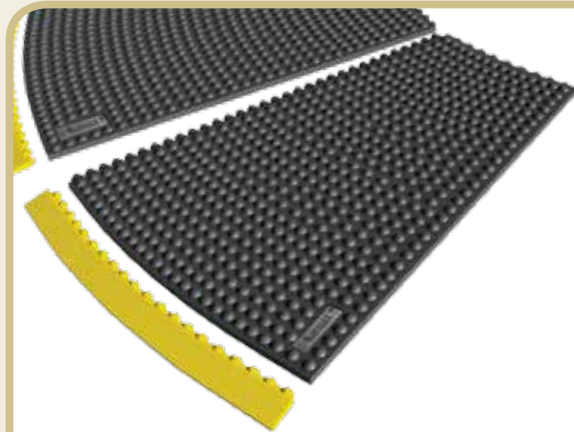
Specifications:

- 91 cm – 45 degree inner curve
- 431 Skywalker HD™ i-Curve Safety Ramp Nitrile male attachable bevels, available in black or yellow
- Weight: 4.3 kg/mat

Colours:

- Black

PRODUCT TESTING



440 Skywalker HD™ o-Curve

- 100% natural rubber compound
- General purpose applications



442 Skywalker HD o-Curve™ Nitrile

- 100% nitrile rubber compound
- Resistant to most industrial oils



443 Skywalker HD o-Curve™ ESD

- Meets IEC61340-4-1 (category DIF), measured resistance $R_g 10^6 - 10^9 \Omega$, $R_p 10^6 - 10^9 \Omega$
- Static dissipative natural rubber compound



444 Skywalker HD o-Curve™ ESD Nitrile FR

- Meets IEC61340-4-1 (category DIF), measured resistance $R_g 10^6 - 10^9 \Omega$, $R_p 10^6 - 10^9 \Omega$
- Static dissipative nitrile rubber compound
- Fire classification Bfl-S1 tested according to EN 13501-1
- Resistant to most industrial oils and suitable for welding areas



445 Skywalker HD o-Curve™ Nitrile FR

- Resistant to most industrial oils and suitable for welding areas
- Fire classification Bfl-S1 tested according to EN 13501-1
- 100% nitrile rubber compound



Specifications:

- 91 cm – 22.5 degree outer curve
- 441 Skywalker HD™ o-Curve Safety Ramp Nitrile male attachable bevels, available in black or yellow
- Weight: 6.4 kg/mat

Colours:

- Black

PRODUCT TESTING



Skywalker® PUR Series

This high quality type polyurethane foam is reputed for its ultimate comfort and longevity properties. Its key characteristic of high thermal insulation performance is owed to a uniform closed cell structure wherein gas remains trapped. Integral skin adds to the compression force deflection properties (>120 according to ASTM 3574C), provides resistance to wear and is non-porous.

Unique workplace mat guarantees optimal ergonomic effects in stationary standing positions. All four sides have bevelled edges to minimize tripping hazards. Loose lay with no installation required.

Recommended uses:

- Medium duty - dry areas

Specifications:

- High quality polyurethane foam.
- Overall thickness: 14 mm.
- Weight: 4.8 kg per m².
- Hardness: 25 Shore A, according to DIN 53505.
- Resistance to temperature: -40°C, +80°C.
- Slip resistance rating R11 according to DIN 51130 and BG-rule BGR181
- Environmental friendly, produced without use of organic carbon-based blowing agents, therefore free of Freon.

Stock sizes 450 and 452:

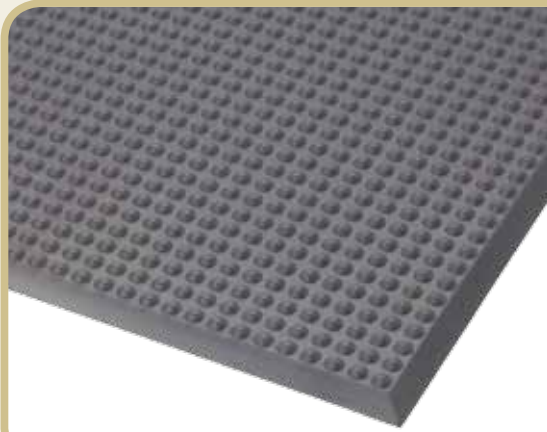
- 65 cm x 95 cm
- 65 cm x 140 cm
- 65 cm x 185 cm
- 95 cm x 125 cm
- 95 cm x 155 cm
- 95 cm x 185 cm

Stock sizes 451 and 453:

- 65 cm x 90 cm
- 65 cm x 135 cm
- 65 cm x 175 cm
- 90 cm x 125 cm
- 90 cm x 155 cm
- 90 cm x 185 cm

Custom sizes:

- Any size and shape, per m²



450 Skywalker® PUR

Specifications:

- High quality polyurethane foam
- General purpose applications
- Ergonomically designed bubble surface provides sure footing and fatigue relief

Colours:

- Grey



PRODUCT TESTING



451 Skywalker® II PUR

Specifications:

- High quality polyurethane foam
- General purpose applications
- Pebble surface provides sure footing and allows freedom of movement

Colours:

- Grey



PRODUCT TESTING



452 Skywalker® PUR ESD

Specifications:

- Static dissipative polyurethane foam
- Ergonomically designed bubble surface provides traction and fatigue relief
- Meets IEC61340-4-1 (category DIF) measured resistance $R_g 10^6 - 10^9 \Omega$, $R_p 10^6 - 10^9 \Omega$
- Optional grounding cord

Colours:

- Black



PRODUCT TESTING



453 Skywalker® II PUR ESD

Specifications:

- Static dissipative polyurethane foam
- Pebble surface provides sure footing and allows freedom of movement
- Meets IEC61340-4-1 (category DIF) measured resistance $R_g 10^6 - 10^9 \Omega$, $R_p 10^6 - 10^9 \Omega$
- Optional grounding cord

Colours:

- Black



PRODUCT TESTING



Skystep™ Series

Ergonomically and economically engineered, the Skystep™ utilizes the power of air. The mat is designed to suction to the ground to prevent the mat from shifting while trapping air in its chambers. These air pockets combined with the resiliency of the rubber create an ultimate cushioning effect while keeping the mat lightweight.

These 13 mm thick standalone rubber mats have a gritted surface pattern with ergonomic bubble to provide maximum fatigue relief while maintaining its anti-slip properties. Skystep™ is moulded from a high quality industrial rubber compound with integrated bevelled edges on all four sides to prevent tripping on the mat. Loose lay with no installation required.

Recommended uses:

- Medium duty - dry areas

Specifications:

- Heavy duty rubber compound.
- Overall thickness: 13 mm.
- Weight: 10 kg per m².
- Slip resistance rating R9 according to DIN 51130 and BG-rule BGR181.
- Free of DOP, free of DMF, free of ozone depleting substances, free of silicone and free of heavy metals.

Colours:

- Black

Stock sizes:

- 60 cm x 90 cm
- 90 cm x 120 cm
- 90 cm x 150 cm

455 Skystep™

Specifications:

- 100% natural rubber compound
- General purpose applications



PRODUCT TESTING



456 Skystep™ Nitrile

Specifications:

- 100% nitrile rubber compound
- Resistant to most industrial oils



PRODUCT TESTING



457 Skystep™ ESD

Specifications:

- Static dissipative natural rubber compound
- Meets IEC61340-4-1 (category DIF), measured resistance $R_g 10^6 - 10^9 \Omega$, $R_p 10^6 - 10^9 \Omega$
- Optional grounding cord



PRODUCT TESTING



PVC Flooring

Tough PVC platforms protect floors while providing fatigue relief. Custom built according to your ideal floor mat in shape and size. Anti-slip surfaces designed for sure footing. Bevelled ramps are available, eliminating trip hazards and allowing for easy access on to and off of the mat surface.

Recommended uses:

- Heavy duty - dry industrial environments

Specifications:

- Heavy duty PVC compound.
- Resistant to synthetic/hydraulic oils.
- Fire classification CfI-S2 tested according to DIN EN ISO 13501 and Class 1 according to NFPA Safety code 101 and IBC 804.2 classification. Testing method ASTM E648-03.
- Yellow safety borders comply with OSHA Code 1910-144.
- Slip resistance rating R9 according to DIN 51130 and BG-rule BGR181.
- Free of DOP, free of DMF, free of ozone depleting substances, free of silicone and free of heavy metals.

Colours:

- Black

621 Diamond Flex Lok™ Solid

Sensational fatigue relief due to its unique “flex” design underneath. Available pre-assembled or as loose tiles for on-site installations. A permanent interlocking system ensures that the mat will not come apart. No gluing required. Easily installed on site for custom configurations.

Specifications:

- Anti-slip deck-plate surface design, tested R10 according to DIN51130 and BG-rule BGR181
- Overall thickness: 25 mm
- Weight: 9.7 kg per m²

Sizes:

- Tile: 30.48 x 30.48 cm

Accessories:

- Yellow Bevel: 15.24 x 30.48 cm
- Yellow Corner: 15.24 x 15.24 cm

Custom Sizes:

- Any dimension or shape, calculation on square meter basis



PRODUCT TESTING



920HD Cushion Lok HD™ Solid

Reinforced closed structure, designed to withstand the heaviest loads. Custom built, in any shape or size mat with black or yellow borders. Anti-slip surface for sure footing.

Specifications:

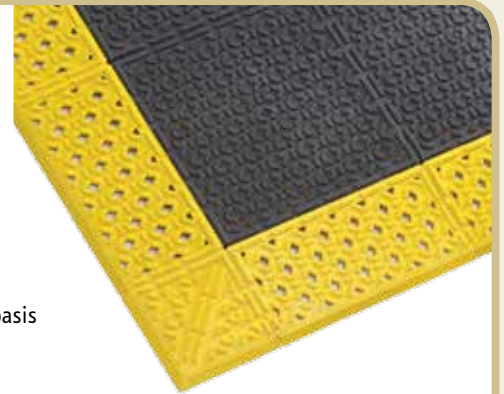
- Overall thickness: 22.2 mm
- Weight: 16.2 kg per m²
- Slip resistance rating R9 according to DIN 51130 and BG-rule BGR181

Stock Sizes with 3 Yellow Borders:

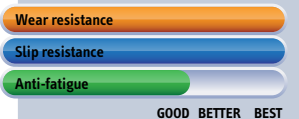
- 76 cm x 152 cm
- 107 cm x 183 cm

Custom Sizes:

- Any dimension or shape, calculation on square meter basis



PRODUCT TESTING



922HD Cushion Lok HD™ Solid Grip Step®

Reinforced closed structure, designed to withstand the heaviest loads. Custom built, in any shape or size mat with black or yellow borders. Anti-slip surface with abrasive Grip Step® coating for extremely slippery areas.

Specifications:

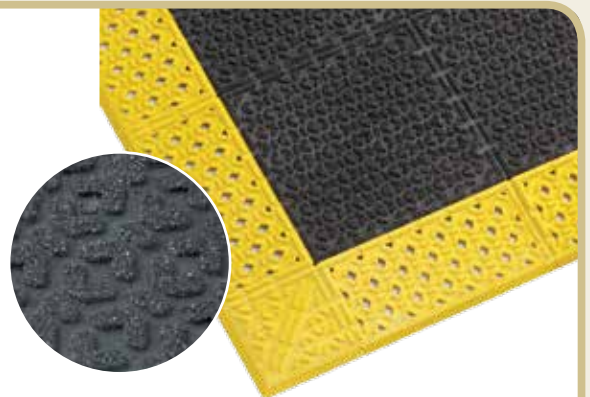
- Overall thickness: 22.2 mm
- Weight: 17 kg per m²

Stock Sizes with 3 Yellow Borders:

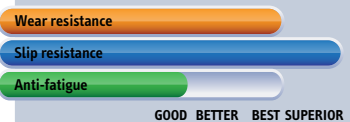
- 76 cm x 152 cm
- 107 cm x 183 cm

Custom Sizes:

- Any dimension or shape, calculation on square meter basis



PRODUCT TESTING



Workplace Solutions for Wet Areas

Slips and falls, and so much more

Slip and fall prevention is usually the main concern in wet and oily working environments. Slip and falls are responsible for 20 - 30% of the accidents which cause long-term interruption of work. Loss of productivity is often an unfortunate side effect with nearly 30% of same-level falls resulting in more than 21 workdays lost.

The four main causes of slips and trips accidents are:

- slippery/wet surfaces caused by water and other fluids;
- slippery surfaces caused by dry or dusty floor contamination, such as sawdust or other debris;
- obstructions, both temporary and permanent;
- uneven surfaces and changes of level, such as unmarked ramps.

injury, illness, and fatalities. Its mission is to generate new occupational safety and health knowledge and to transfer that knowledge into practice.

Notrax® Floor matting has a dedicated line of anti-fatigue matting that specifically addresses slippery floors as well.

Increasing Traction

Floors can become dangerously slippery when they are wet or exposed to oil or grease. This is due to a condition where at the moment of shoe touchdown, a fluid or film is trapped under the shoe. This phenomenon is similar to an automobile hydroplaning.

In other words, the foot, as it descends, has no traction.

An uncontrolled skid occurs. The person loses control and falls.

Wet sources of contamination include water, oils, grease, and soap from cleaning solutions.

This can be addressed by increasing traction on the floor through footwear and slip resistant matting.

Removing Debris

Floors can also become slippery due to dry or dusty floor contamination, such as sawdust or other debris that accumulates on the surface.

Sand, bits of gravel and dirt are commonly



* NIOSH

However, data from the NIOSH on reported workplace accidents also cited overexertion and repetitive work as a contributing factor to long-term absenteeism. In fact, this cause was almost double the number of reported incidents. Combined, these two factors are the largest cause of non-fatal injury and illness cases involving days away from work.

Source: NIOSH is the federal agency responsible for conducting research and making recommendations to prevent work-related

called 'boulder dust' because they act as miniature ball bearings when caught between a hard floor surface and a smooth shoe sole. The shoe loses its traction due to the "ball bearing" effect. The foot "skids away". The person loses control and falls.

Dry contamination includes dusts, powders, granules, and other small objects, such as metal nuts and bolts spilled on the floor.

The accumulation of dry contamination can also attribute to slips.



This can be addressed through large drainage holes that drain or remove dry or wet debris to keep the surface clean and clear.

Anti-Fatigue

Standing on hard surfaces for long periods can lead to several problems. First, standing causes muscles to constrict, which reduces the blood flow. This makes muscles and joints hurt, and it causes blood to stagnate.

In addition, long-term standing causes pronation, or excessive flattening of the foot. While this can be simply tiring and a bit painful, it can also lead to plantar fasciitis and other serious foot conditions. Lower back pain is highest in workers who stand 4 hours or more per day.

As noted by James Kendrick in the April 1999 issue of 'Occupational Health & Safety', the cushioning effect of anti-fatigue matting allows continuous micro-movements of the feet, which minimizes blood pooling in the legs.

Prof. Dr. Redha Taiar (2011) at the University of Reims in France also noted imbalance as second cause of fatigue.

In addition to overuse of the same muscles, when the system is out of balance, the muscles must work harder to search for balance and the quick reaction speed is maintained at the cost of energy (fatigue).

He emphasized that “without a mat there is a dysfunction in the balance of a person which can cause pathologies that are accelerated by a repetitive task and other constraining work”. Such unbalance is very harmful for the human body. The use of anti-fatigue mats enables correct balancing and a uniform distribution between the right and left leg. Prof. Taiar’s findings confirmed that pains are substantially reduced with the use of anti-fatigue mats compared to the initial situation without mats.

Various materials and compounds

Notrax® industrial matting is manufactured to withstand harsh industrial environments. In order to achieve this, our mat solutions are manufactured in specialized compounds to meet the distinct needs of various industrial or production environments.

This variation in compounds allows companies to select only their specialized product characteristics needed such as oil resistance, fire retardant matting for welding areas, and Grip Step®, an abrasive coating for extremely slippery areas, or a combination thereof. This keeps matting for general applications affordable while offering extremely specialized matting solutions.

The compounds connect seamlessly for easy transitions. The Notrax® product stamps clearly mark each mat with the product number and compound characteristics making it easy to distinguish between the various rubber compounds.

SAFETY STAN



549 Safety Stance™

High quality anti-fatigue matting for use in areas where there can be frequent oil spilling. Drainage holes and raised studs provide aeration and allow fluids and debris to fall through, leaving a dry and tidy top surface. Made of 100% nitrile rubber compound, designed to withstand industrial oils and harsh chemicals. Suited for multi-shift operations. Aggressive slip resistant surface. Cleaning with detergent and water-jet is recommended for extended service life.

Ergonomic benefit derived from 22 mm thick resilient worker platform. Standard size mats are loose lay and require no installation. Highly visible nitrile rubber orange coloured borders included on 3 sides for added safety. Non-shifting. Free of silicone therefore safe for vehicle painting facilities.

Recommended uses:

- Heavy duty – wet/oily industrial environments

Specifications:

- Heavy duty 100% nitrile rubber compound.
- Resistant to industrial oils and harsh chemicals.
- Orange coloured borders included on 3 sides comply with OSHA Code 1910-144.
- Overall thickness: 22 mm.
- Weight: 13 kg per m².
- Free of DOP, free of DMF, free of ozone depleting substances, free of silicone and free of heavy metals.

Colours:

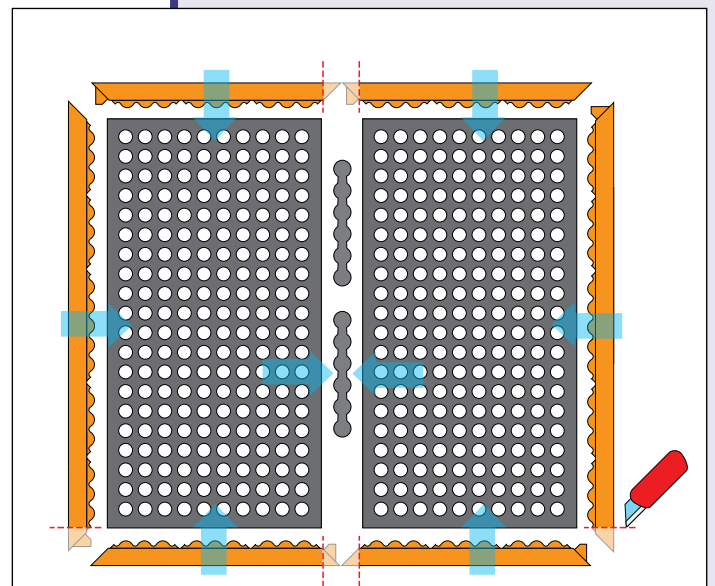
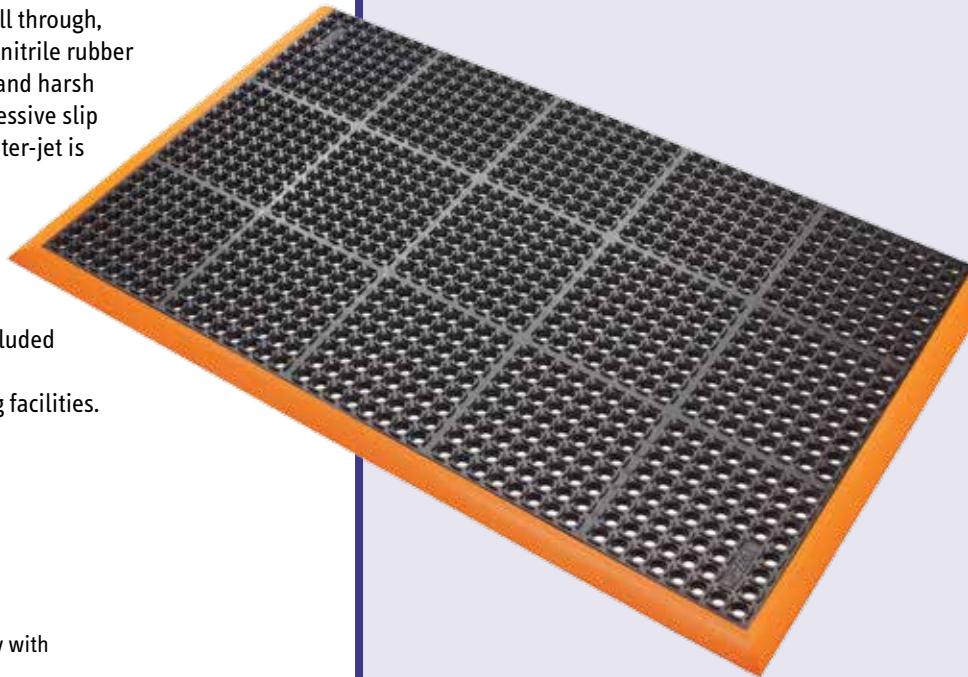
- Black

Stock sizes with 3 orange borders:

- 66 cm x 102 cm
- 97 cm x 163 cm
- 97 cm x 315 cm

Custom sizes:

- 549 Safety Stance™ Custom is available on demand in custom sizes and configurations



549 Safety Stance™ Custom

Custom sizes. Calculated on square meter basis

PRODUCT TESTING

Wear resistance

Slip resistance

Anti-fatigue

GOOD BETTER BEST



Cushion Ease™ Series

Modular rubber anti-fatigue mats with holes for excellent drainage and aeration leaving a dry, clean work area. These interlocking mats allow on-site customization. Square snap-together units of 91 cm x 91 cm that can be assembled effortlessly and laid out from wall to wall or as islands in any direction or shape.

Compatible with patented MD Ramp System™ for smart safety bevelling solutions; allow out and inside corners.

Superb anti-fatigue properties due to its unique design underneath and high quality resilient rubber compounds. Designed to yield a long service life. Resistant to most chemicals and extreme temperatures. Free of silicone therefore safe for vehicle painting facilities. Ergonomic benefit derived from 19 mm thick worker platform.

Recommended uses:

- Heavy duty - wet areas

Specifications:

- Heavy duty rubber compound.
- Overall thickness: 19 mm.
- Weight: 10.8 kg per mat.
- Free of DOP, free of DMF, free of ozone depleting substances, free of silicone and free of heavy metals.

Colours:

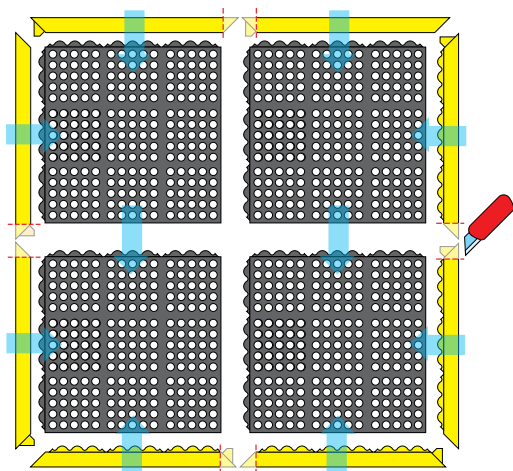
- Black

Stock sizes:

- 91 cm x 91 cm

Accessories:

- MD Ramp System™ Nitrile male and female attachable bevels 91 cm, black or yellow





550 Cushion Ease™

Specifications:

- 100% natural rubber compound
- General purpose applications



PRODUCT TESTING



650S Cushion Ease™ Nitrile

Specifications:

- 100% nitrile rubber compound
- Resistant to most industrial oils



PRODUCT TESTING



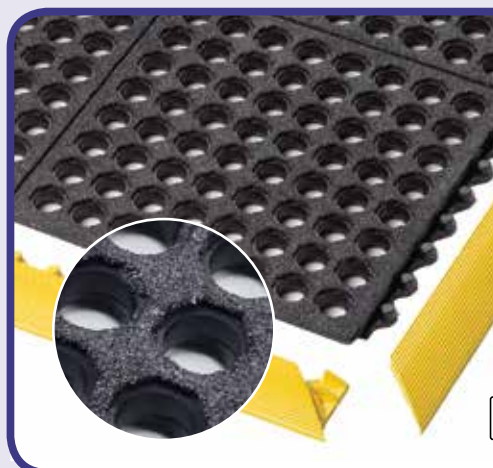
650SFR Cushion Ease™ Nitrile FR

Specifications:

- 100% nitrile rubber compound
- Fire classification Bfl-S1 tested according to EN 13501-1
- Resistant to most industrial oils and suitable for welding areas



PRODUCT TESTING



850SFR Cushion Ease™ Nitrile GSII® FR

Specifications:

- 100% nitrile rubber compound
- With abrasive Grip Step® coating for extra adherence in extremely slippery areas
- Slip resistance R13 according to DIN 51130
- Fire classification Bfl-S1 tested according to EN 13501-1
- Resistant to most industrial oils and suitable for welding areas



PRODUCT TESTING



SANITOP™
FLEX™
SANITOP™

Sanitop™ Series

Wet area mats with large drainage holes and raised studs provide aeration and allow fluids or debris to fall through, leaving the surface clear. Bevelled ramps are available to reduce trip hazards. Cleaning with detergent and water-jet is recommended for extended service life.

Made of tough rubber compounds, designed to yield a long service life. Aggressive slip resistant surface. Non-shifting: heavy weight keeps mat in place.

Recommended uses:

- Wet or dry industrial areas – general purpose applications

Specifications:

- 100% natural rubber compound for general purpose applications.
- Free of DOP, free of DMF, free of ozone depleting substances, free of silicone and free of heavy metals.
- Flammability Ignition characteristics CPSC FF 1-70: Pass ASTM D2859.

Colours:

- Black

563 Sanitop Deluxe™

Safety and comfort unite in this product. Ergonomic benefit derived from 20 mm thick worker platform with large drainage holes and raised studs for aeration and to allow fluids or debris to fall through, leaving the surface clear. Bevelled ramps are available to reduce trip hazards.

Strait edges allow coverage of any area through linking the mats lengthwise or side by side, held together by connectors.

Specifications:

- 100% natural rubber compound for general purpose applications
- Overall thickness: 20 mm
- Weight: 12.3 kg per m²

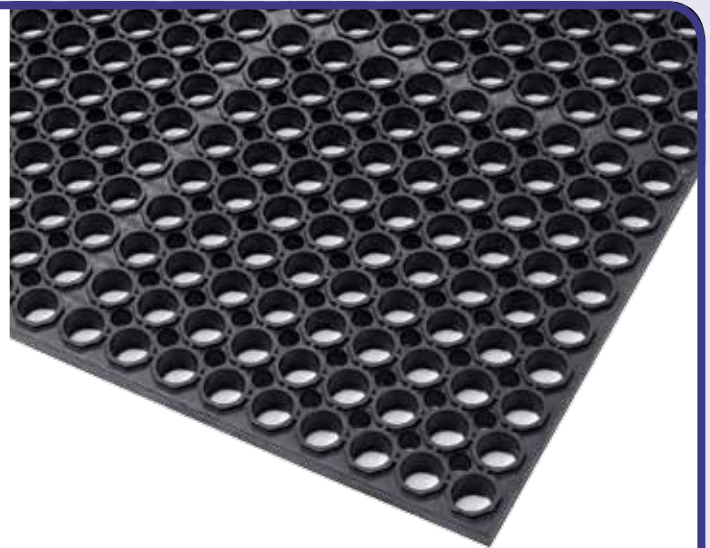
Recommended uses:

- Heavy duty applications

Stock sizes:

- 91 cm x 152 cm

563 Sanitop Deluxe™ is also available in a 75% nitrile rubber compound for food production and food service applications (page 69).



Accessories:

- Connectors for width-wise or lengthwise expansion
- Attachable yellow ramps 91 cm piece, 152 cm piece, per linear meter



PRODUCT TESTING



562 Sanitop™

Provides basic comfort and traction in wet areas with large drainage holes and raised studs for aeration and to allow fluids and debris to fall through, leaving the surface clear. Moulded bevelled edges on all 4 sides to prevent tripping and allow cart access.

Specifications:

- 100% natural rubber compound for general purpose applications
- Overall thickness: 12.7 mm
- Weight: 8 kg per m²

Recommended uses:

- Medium duty applications

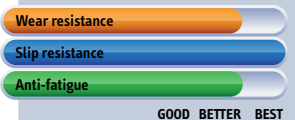
Stock sizes:

- 91 cm x 152 cm
- 91 cm x 297 cm
- 91 cm x 594 cm

562 Sanitop™ is also available in a 75% nitrile rubber compound for food production and food service applications (page 71).



PRODUCT TESTING



PVC Duckboards

Tough PVC duckboards protect floors while providing fatigue relief. Custom built according to your ideal floor mat in shape and size. Anti-slip surfaces designed for sure footing. Bevelled ramps are available, eliminating trip hazards and allowing for easy access on to and off of the mat surface.

Recommended uses:

- Heavy duty - wet/dry or oily industrial environments

Specifications:

- Heavy duty PVC compound.
- Resistant to synthetic/hydraulic oils.
- Fire classification Cfl-S2 tested according to DIN EN ISO 13501 and Class 1 according to NFPA Safety code 101 and IBC 804.2 classification. Testing method ASTM E648-03.
- Yellow safety borders comply with OSHA Code 1910-144.
- Free of DOP, free of DMF, free of ozone depleting substances, free of silicone and free of heavy metals.

Colours:

- Black

620 Diamond Flex Lok™

Sensational fatigue relief due to its unique “flex” design underneath. Available pre-assembled or as loose tiles for on-site installations. A permanent interlocking system ensures that the mat will not come apart. No gluing required. Easily installed on site for custom configurations. Anti-slip deck-plate surface design, tested R10 according to DIN51130 and BG-rule BGR181. Drainage system of round shaped holes of 22 mm diameter facilitates the removal of liquids and debris from the work area without clogging, keeping the surface clear.

Specifications:

- Overall thickness: 25 mm
- Weight: 9.7 kg per m²

Custom Sizes:

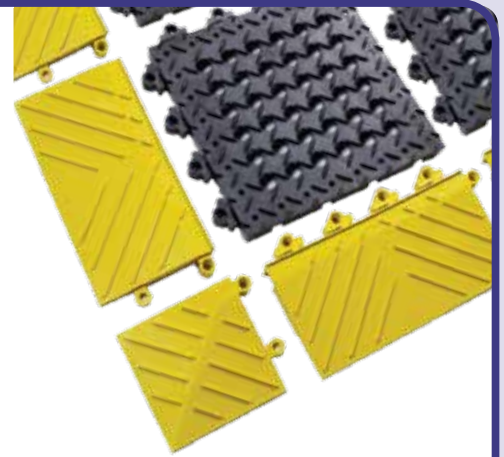
- Any dimension or shape, calculation on square meter basis

Sizes:

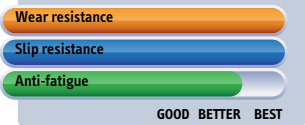
- Tile: 30.48 x 30.48 cm

Accessories:

- Yellow Bevel: 15.24 x 30.48 cm
- Yellow Corner: 15.24 x 15.24 cm



PRODUCT TESTING



520HD Cushion Lok HD™

Reinforced structure, designed to withstand the heaviest loads. Custom built in any shape or size mat with black or yellow borders. Anti-slip surface for sure footing. Perforated to facilitate drainage of spills or debris.

Specifications:

- Overall thickness: 22.2 mm
- Weight: 9.5 kg per m²
- Slip resistance rating R9 according to DIN 51130 and BG-rule BGR181

Custom Sizes:

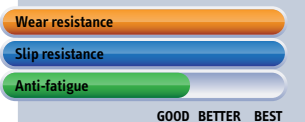
- Any dimension or shape, calculation on square meter basis

Stock Sizes with 3 Yellow Borders:

- 76 cm x 152 cm
- 107 cm x 183 cm



PRODUCT TESTING



522HD Cushion Lok HD™ Grip Step®

Reinforced structure, designed to withstand the heaviest loads. Custom built in any shape or size mat with black or yellow borders. Anti-slip surface for sure footing. Perforated to facilitate drainage of spills or debris. Anti-slip surface with abrasive Grip Step® coating for extremely slippery areas.

Specifications:

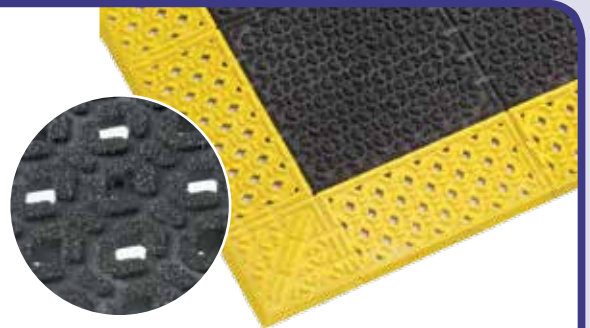
- Overall thickness: 22.2 mm
- Weight: 9.7 kg per m²

Custom Sizes:

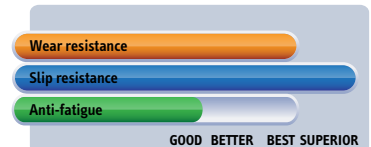
- Any dimension or shape, calculation on square meter basis

Stock Sizes with 3 Yellow Borders:

- 76 cm x 152 cm
- 107 cm x 183 cm



PRODUCT TESTING



FLEXDEK™



537 Flexdek™

Industrial grade welded duckboard design that creates an elevated platform for safety and offers basic fatigue relief. Open grid mat construction provides excellent drainage of fluids in all directions. The anti-slip base and anti-slip surface create a healthier and safer environment in wet or oily areas. The PVC vinyl compound resists chemicals, oil and grease. Easy to install and relocate. Easy to clean and requires little to no maintenance. Suitable for heavy duty use and will not flatten over time.

Specifications:

- Industrial grade extruded PVC compound in a welded grid design
- Oil and grease resistant
- Overall thickness: 12 mm
- Weight: 7,5 kg per m²
- Free of DOP, free of DMF, free of ozone depleting substances, free of silicone and free of heavy metals
- Slip resistance R10 tested according to DIN51130 and BG-rule BGR181

Recommended uses:

- Heavy duty - wet, dry or oily industrial areas

Colours:

- Black, Black/yellow

Full rolls 10m:

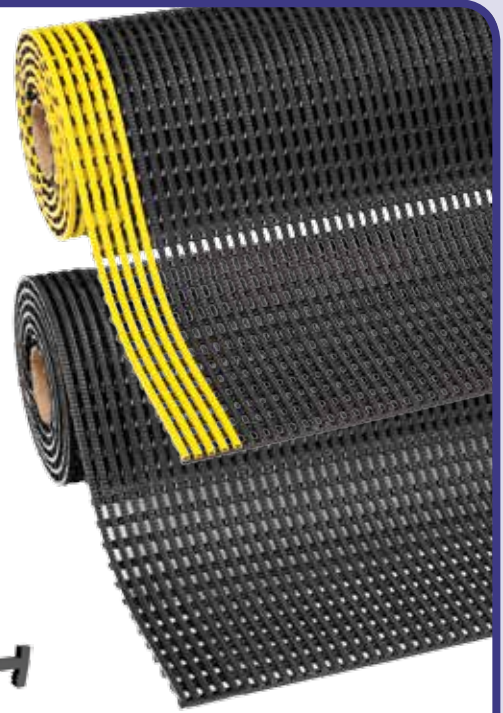
- 60 cm, 91 cm and 122 cm wide

Custom lengths:

- 60 cm, 91 cm and 122 cm widths per linear meter

Accessories

- Connector clips available for width-wise/lengthwise expansion
- 90-degree connections



PRODUCT TESTING



539 Gripwalker™

Multi-functional anti-slip matting can be used for many applications.

The wave design creates a slip-resistant surface that increases traction on wet and slippery floors. Anti-bacterially treated vinyl prevents growth of fungi or bacteria. Open structure for easy draining where dependable sure footing is essential.

Easy to clean and requires only minimal maintenance.

Specifications:

- Industrial grade extruded PVC in a wave design, anti-bacterially treated
- Overall thickness: 11 mm
- Oil and grease resistant
- Weight: 8 kg per m²
- Free of DOP, free of DMF, free of ozone depleting substances, free of silicone and free of heavy metals
- Slip resistance R10 tested according to DIN51130 and BG-rule BGR181

Recommended uses:

- Heavy duty - wet, dry or oily industrial areas

Colours:

- Grey

Full rolls 12.2m:

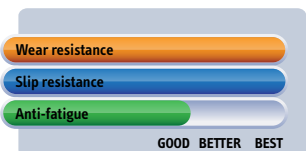
- 91 cm and 122 cm wide

Custom lengths:

- 91 cm and 122 cm widths per linear meter



PRODUCT TESTING



GRITTRAX™

Extra Traction

Thin anti-slip mats to improve safety in slippery work environments. Non-skid surfaces add traction and keep mats from shifting. Low profile for easy cart access.

Loose lay for a quick and easy anti-slip solution.

Light weight to facilitate lifting and cleaning with easy roll-up and clean-up. Made of tough compounds designed to yield a long service life. Free of DOP, free of DMF, free of ozone depleting substances, free of silicone and free of heavy metals.

Recommended uses:

- Medium to heavy duty – industrial environments, wet areas

Colours:

- Black



681 Grit Trax™

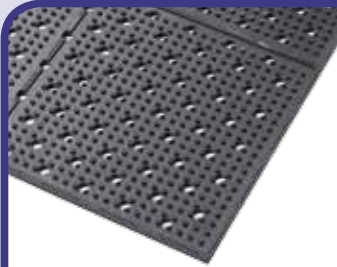
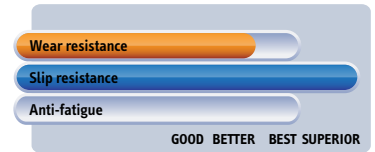
Gritted oil resistant vinyl with mineral coating for slip prevention in extremely wet or oily areas. Slip resistant vinyl backing.

- Overall thickness: 2.1 mm
 - Weight: 2.3 kg per m²
- Stock Sizes:**
- 90 cm x 150 cm
 - 90 cm x 18.3 m

- Custom lengths:**
- 90 cm width per linear meter



PRODUCT TESTING



T23 Multi Mat II®

Reversible. Drainage holes keep the surface clear. Raised studs provide grip and aeration.

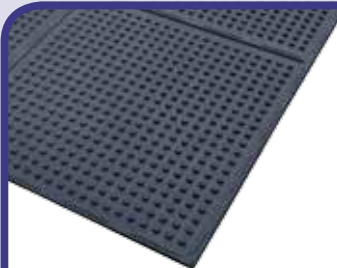
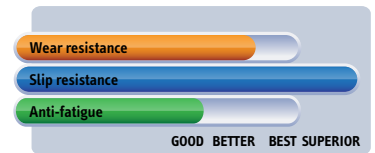
- 100% natural rubber compound for general purpose applications
- Overall thickness: 9.5 mm
- Weight: 9.9 kg per m²

- Stock sizes:**
- 91 cm x 122 cm
 - 91 cm x 244 cm
 - 91 cm x 9.75 m

- Custom lengths:**
- 90 cm width per linear meter



PRODUCT TESTING



T21 Multi Mat II® Solid

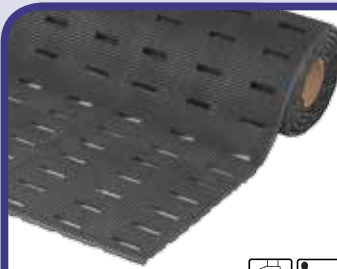
Reversible. For extended life. Raised studs provide grip and aeration and keeps mat from shifting.

- 100% natural rubber compound for general purpose applications
 - Overall thickness: 9.5 mm
 - Weight: 9.9 kg per m²
- Stock sizes:**
- 91 cm x 122 cm
 - 91 cm x 244 cm
 - 91 cm x 9.75 m

- Custom lengths:**
- 90cm width per linear meter



PRODUCT TESTING

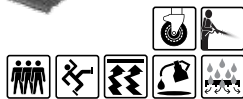


420 Cushion Dek™

Top surface with raised pyramid configuration enhances traction while channelling liquids. Slot perforations for drainage of fluids.

- Made of 100% PVC, resistant to industrial oils
 - Overall thickness : 11 mm
 - Weight: 6,5 kg per m²
- Stock sizes:**
- 91 cm x 122 cm, 91 cm x 182 cm, 91 cm x 3 m, 91 cm x 10 m

- Custom lengths:**
- Available in 60 cm, 91 cm, 122 cm or 182 cm widths



PRODUCT TESTING



422 Cushion Dek™ Grip Step®

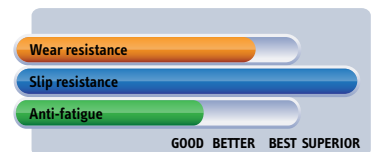
With abrasive Grip Step® coating for extra adherence. Top surface with raised pyramid configuration enhances traction while channelling liquids. Slot perforations for drainage of fluids.

- Made of 100% PVC, resistant to industrial oils
 - Overall thickness : 11 mm
 - Weight: 6,5 kg per m²
- Stock sizes:**
- 91 cm x 122 cm, 91 cm x 182 cm, 91 cm x 3 m, 91 cm x 10 m

- Custom lengths:**
- Available in 60 cm, 91 cm, 122 cm or 182 cm widths



PRODUCT TESTING



Electrostatic Discharge (ESD) Solutions

There is a growing demand for anti-static solutions in industrial and commercial environments.

Static electricity is everywhere. In many facilities, people are one of the prime generators of static electricity. The simple act of walking around or even sitting on certain types of stools can generate several thousand volts on the human body, especially in the winter when air becomes drier.

Static build-up is usually unnoticed until it is discharged known as Electro-Static Discharge (ESD). Like lightening, static electricity continues to build up and looks for the shortest route to earth. Once discharged, employees can feel an extreme shock. If the discharge was felt, it was probably more than 2000 volts. If the discharge was heard, it would have been between 3000 - 5000 Volts. And if there was a blue spark, the shock was most likely more than 10,000 Volts.

If not properly controlled, static build up can cause unpleasant shocks to employees as well as unseen damage to static sensitive devices and electrical components.

Why the sudden need for ESD?

In the 90's, computer chips were manufactured with on-chip protection to safeguard them from static discharge. However, on-chip protection was removed to make hardware smaller and more sophisticated, causing these higher performance components to become much more vulnerable to electrical interference.

Software component sensitivity, that was once over 1000 Volts, is currently around 50 Volts and even predicted to drop to as little as 25 Volts. Static discharge can cause usually unseen damage to electronic equipment or partially damage or weaken a component resulting in later failure. Preventing static build-up has therefore become a priority for building designers, facility managers and operations leaders.

Plus more and more industries are susceptible to static due to the increased use of technology. Computers in some form are in almost everything these days. From toasters to televisions, from manufacturers to logistics to call centres, just about every industry is prone to static build up and its shocking effects.

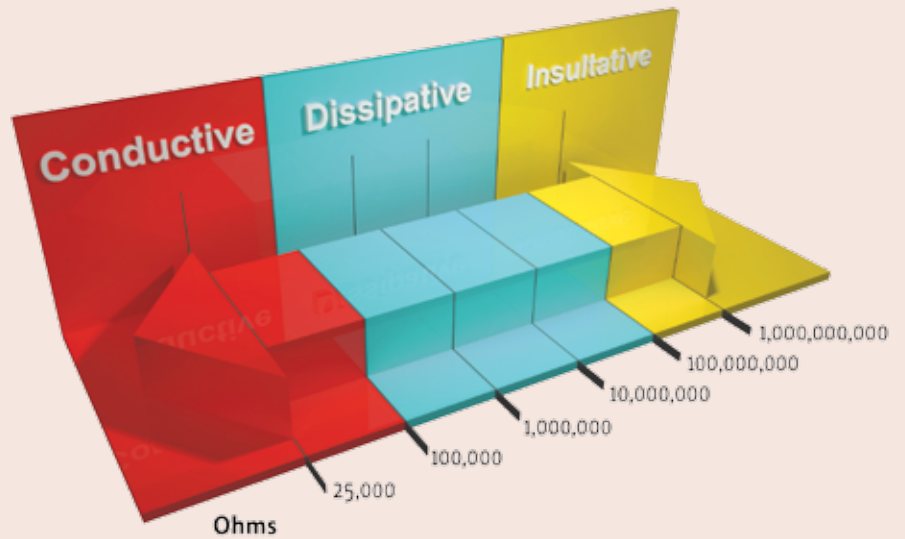


ESD Matting Solutions

To achieve an ESD protective work area while complying with Standard IEC61340-5-1 or ANSI EOS/ESD 6.1, all conductors in the environment, including personnel, must be grounded to the same electrical ground point, creating a balance between all items and personnel.

There are a number of ESD products to help reduce or eliminate static build-up from furniture, gear, footwear to flooring. Out of these multitude of products, many facility managers view static-dissipative flooring as the most-effective means to prevent ESD from becoming a problem. ESD rubber flooring has even been cited by MIT Lincoln Laboratories as having the most effective static protection for any application and the only static resistant product that works regardless of footwear.

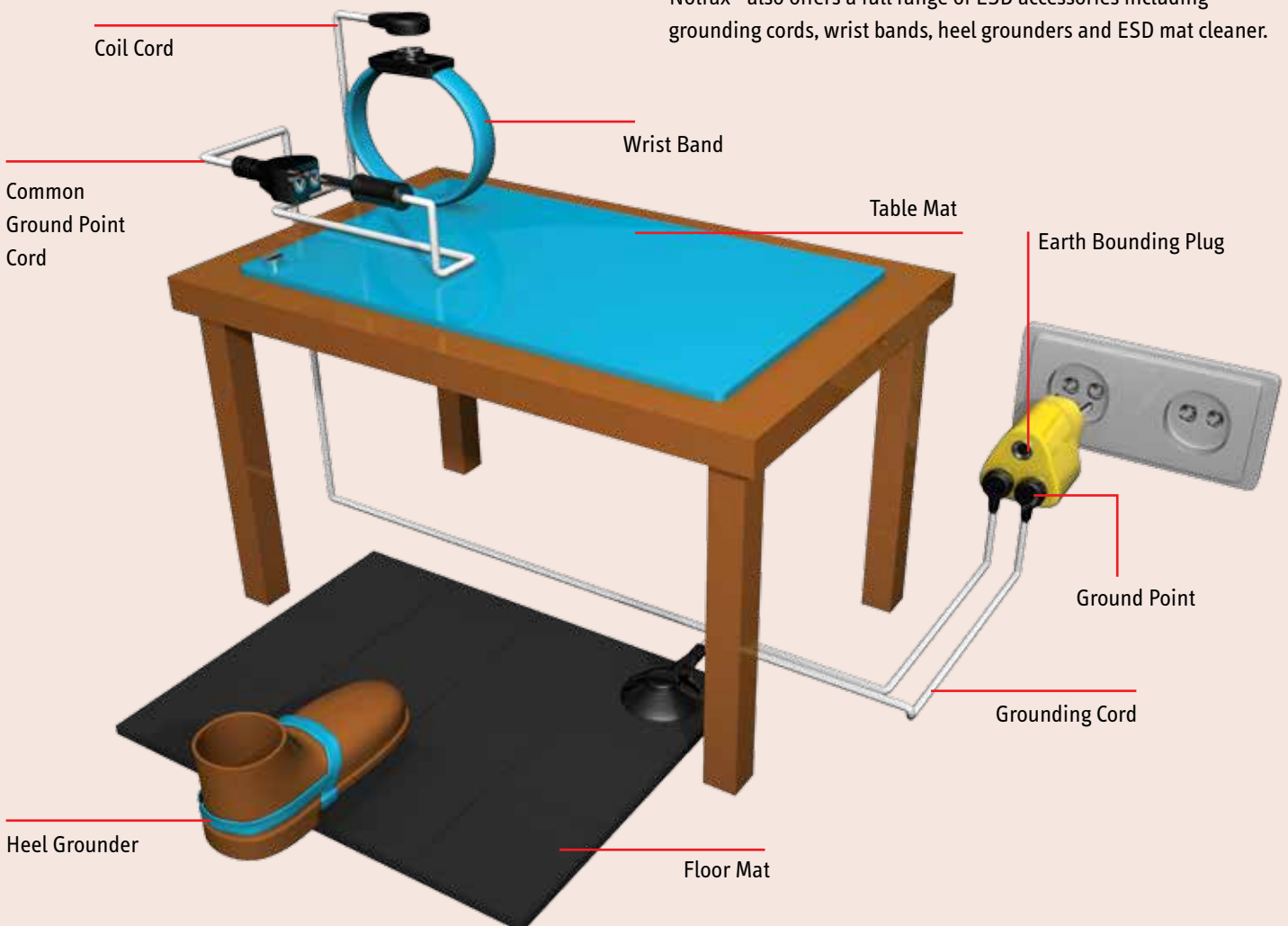
ESD matting solutions range from dissipative to conductive to meet IEC61340-4-14 requirements. Static dissipative matting has an electrical resistance range of $10^6 - 10^9$ measured in Ohms. Charges will flow to ground more slowly and in a somewhat more controlled manner than with conductive materials. Conductive matting will



drain static even faster with an even lower electrical resistance range measured between $10^4 - 10^6$ Ohms. For safety, conductive matting resistance should not be lower than 10^4 Ohms.

In response to the increasing demand, Notrax® introduced a variety of Electro Static Discharge (ESD) protective anti-fatigue matting that are specially formulated to drain static electricity from workers thereby avoiding unpleasant static shock while safeguarding equipment.

Notrax® also offers a full range of ESD accessories including grounding cords, wrist bands, heel grounders and ESD mat cleaner.



Linear Length Mats

Static dissipative mats available in linear lengths with an ergonomic benefit derived from a 9.4 - 14 mm thick worker platform with vinyl sponge base for fatigue relief. Bevelled edges on all four sides to minimize risk of tripping.

Specifications:

- Meets IEC61340-4-1 (category DIF), measured resistance $R_g 10^6 - 10^9 \Omega$, $R_p 10^6 - 10^9 \Omega$.
- Electrostatic charge (walking test), meets ISO6356 and EN1815.
- Free of DOP, free of DMF, free of ozone depleting substances, free of silicone and free of heavy metals.
- Slip resistance R10 according to DIN51130 and BG-rule BGR181.

Compatible with ESD Accessories on page 57.

826 Diamond Stat™

Ergonomic benefit derived from 14 mm thick worker platform of a static dissipative combination of tough top surface laminated onto a comfortable sponge base for maximum durability coupled with fatigue relief. Equipped with 10 mm female socket attached to the mat and grounding cord. Diamond deck plate surface provides traction and allows easy twist turns.

Featured with RedStop™ slip resistant backing to prevent mats from shifting. UniFusion™ technology, engineered to resist in the harshest work environments.

Specifications:

- 4.7 mm static dissipative PVC top surface permanently bonded onto a 9.3 mm resilient backing of microcellular vinyl
- Overall thickness: 14 mm
- Weight: 6.5 kg per m²
- Fire classification Cfl-S1 tested according to EN 13501

Recommended uses:

- Heavy duty - dry industrial environments

Colours:

- Black

Stock sizes:

- 91 cm x 150 cm, 91 cm x 3 m



Full rolls 22.8 m:

- 91 cm x 22.8 m

Custom lengths:

- 91 cm per linear meter



PRODUCT TESTING



825 Cushion Stat™

Ergonomic benefit derived from 9.4 mm thick worker platform of a static dissipative vinyl sponge that reduces fatigue and static build up. Pebble pattern provides non-directional traction and is easy to clean. Optional 10 mm female socket attached to the mat for connection with optional grounding cord.

Specifications:

- Static dissipative vinyl sponge
- Overall thickness: 9.4 mm
- Weight: 3 kg per m²

Recommended uses:

- Light duty - dry areas

Colours:

- Black/yellow, Black, Grey

Stock sizes:

- 91 cm x 150 cm

Full rolls 18.3 m:

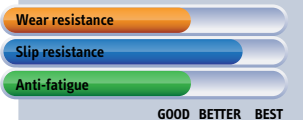
- 91 cm x 18.3 m

Custom lengths:

- 91 cm per linear meter



PRODUCT TESTING





CUSHION MATS

ESD Protective Modular Mats

Heavy duty rubber tiles of 91 cm x 91 cm can be easily assembled for coverage of large areas or individual work stations. Ergonomic benefit derived from a 13 mm - 19 mm thick worker platform made of resilient rubber compounds for maximum fatigue relief in dry industrial environments.

The unique design and craftsmanship make the mat easy to handle and easy to install. A tooled grid of 30 cm x 30 cm sections on the underside of the mat makes further customization quick and easy. Attachable bevelled edges prevent tripping and allow inside and outside corners.

Recommended uses:

- Heavy duty - dry areas (assembly lines, work stations, CNC machine stations)

Specifications:

- Slip resistance rating R9 according to DIN 51130.
- Free of DOP, free of DMF, free of ozone depleting substances, free of silicone and free of heavy metals.
- Meets IEC61340-4-1 (category D1F), measured resistance $R_g 10^6 - 10^9 \Omega$, $R_p 10^6 - 10^9 \Omega$.

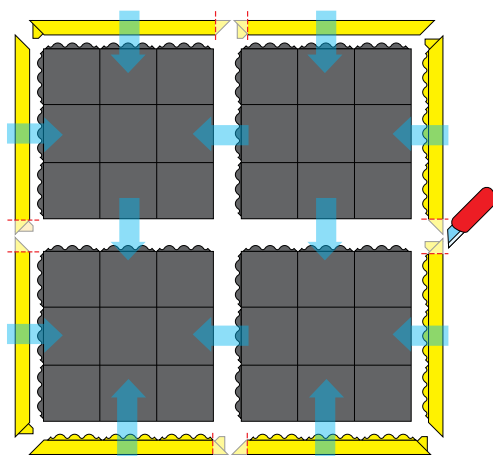
Colours:

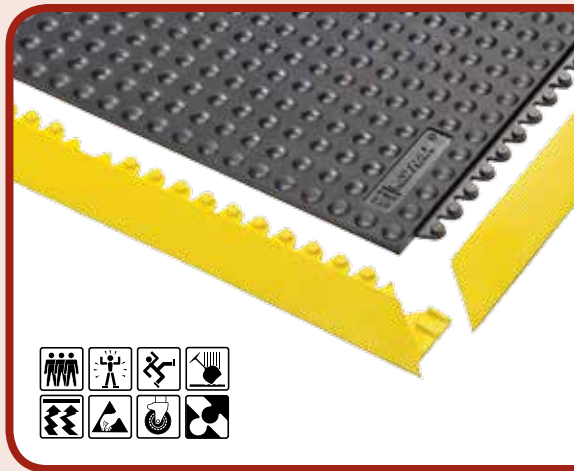
- Black

Stock sizes:

- 91 cm x 91 cm

Compatible with ESD Accessories on page 57.





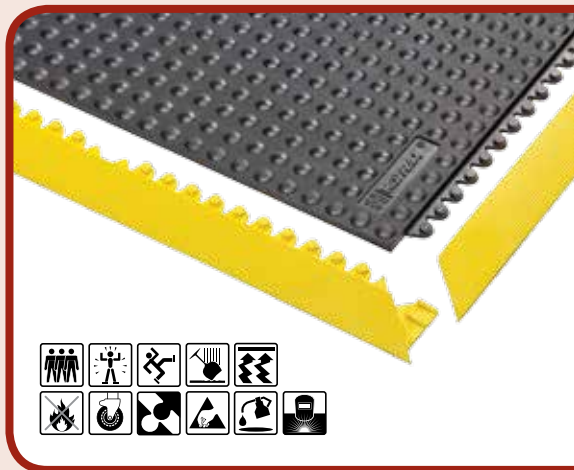
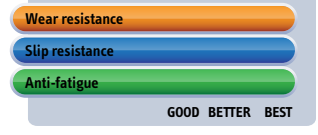
463 Skywalker HD™ ESD

- Static dissipative natural rubber compound
- Overall thickness: 13 mm
- Weight: 10 kg per mat

Accessories:

- SkywalkerHD™ Ramp Nitrile male and female attachable bevels 91 cm, black or yellow
- For more accessories, see pages 26 and 27

PRODUCT TESTING



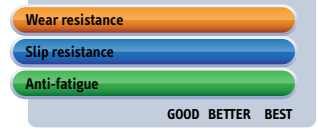
464 Skywalker HD™ ESD Nitrile FR

- Static dissipative 100% nitrile rubber compound
- Fire classification Bfl-S1 tested according to EN 13501-1
- Resistant to most industrial oils and suitable for welding areas
- Overall thickness: 13 mm
- Weight: 10 kg per mat

Accessories:

- SkywalkerHD™ Ramp Nitrile male and female attachable bevels 91 cm, black or yellow
- For more accessories, see pages 26 and 27

PRODUCT TESTING



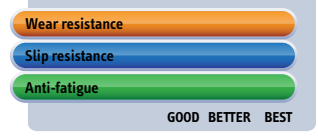
558 Cushion Ease™ ESD

- Static dissipative natural rubber compound
- Overall thickness: 19 mm
- Weight: 12.7 kg per m²

Accessories:

MD Ramp System™ Nitrile male and female attachable bevels 91 cm, black or yellow

PRODUCT TESTING



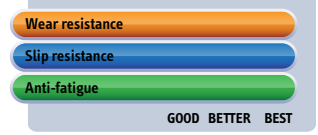
661S Cushion Ease™ ESD Nitrile FR

- Static dissipative 100% nitrile rubber compound
- Fire classification Bfl-S1 tested according to EN 13501-1
- Resistant to industrial oils and suitable for welding areas
- Overall thickness: 19 mm
- Weight: 12.7 kg per m²

Accessories:

MD Ramp System™ Nitrile male and female attachable bevels 91 cm, black or yellow

PRODUCT TESTING



ESD Protective Mats

Static dissipative mats for individual workstations with an ergonomic benefit derived from a 13 - 14 mm thick worker platform and ergonomic pattern for fatigue relief. Anti-slip surface for sure footing. Integrated bevelled edges on all four sides to minimize risk of tripping.

Recommended uses:

- Medium duty - dry areas

Specifications:

- Meets IEC61340-4-1 (category D1F), measured resistance $R_g 10^6 - 10^9 \Omega$, $R_p 10^6 - 10^9 \Omega$.
- Electrostatic charge (walking test), meets ISO6356 and EN1815.

Colours:

- Black

Compatible with ESD Accessories on page 57.





457 Skystep™ ESD

These 13 mm thick standalone rubber mats have a gridded surface pattern with ergonomic bubble to provide maximum fatigue relief while maintaining its anti-slip properties. Moulded from a high quality industrial rubber compound.

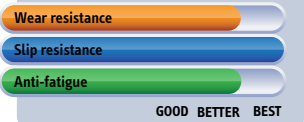
Specifications:

- Slip resistance rating R9 according to DIN 51130 and BG-rule BGR181
- Static dissipative natural rubber compound
- Overall thickness: 13 mm
- Weight: 10 kg per m²

Stock sizes:

- 60 cm x 90 cm
- 90 cm x 120 cm
- 90 cm x 150 cm

PRODUCT TESTING



Skystep™ is also available in other rubber compounds. See the entire Skystep™ line in the Notrax® Industrial Mats (page 31).



452 Skywalker® PUR ESD

Ergonomically designed bubble surface provides sure footing and fatigue relief. High quality polyurethane foam reputed for its ultimate comfort and longevity properties. Unique workplace mat guarantees optimal fatigue relief in stationary standing positions.

Specifications:

- Slip resistance rating R11 according to DIN 51130 and BG-rule BGR181
- Environmental friendly, free of Freon
- Static dissipative polyurethane foam
- Overall thickness: 14 mm
- Weight: 4.8 kg per m²

Stock sizes:

- 65 cm x 95 cm 95 cm x 125 cm
- 65 cm x 140 cm 95 cm x 155 cm
- 65 cm x 185 cm 95 cm x 185 cm

Custom sizes: Any size and shape, per m²

PRODUCT TESTING



Skywalker® PUR is also available in other polyurethane compounds. See the entire Skywalker® PUR line in the Notrax® Industrial Mats (page 29).



453 Skywalker® II PUR ESD

Pebble surface provides sure footing and allows freedom of movement. High quality polyurethane foam reputed for its ultimate comfort and longevity properties. Unique workplace mat guarantees optimal fatigue relief in stationary standing positions.

Specifications:

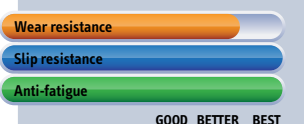
- Slip resistance rating R11 according to DIN 51130 and BG-rule BGR181
- Environmental friendly, free of Freon
- Static dissipative polyurethane foam
- Overall thickness: 14 mm
- Weight: 4.8 kg per m²

Stock sizes:

- 65 cm x 90 cm 90 cm x 125 cm
- 65 cm x 135 cm 90 cm x 155 cm
- 65 cm x 175 cm 90 cm x 185 cm

Custom sizes: Any size and shape, per m²

PRODUCT TESTING



Skywalker® II PUR is also available in other polyurethane compounds. See the entire Skywalker® II PUR line in the Notrax® Industrial Mats (page 29).

ESD Protection from A to Z

Specialized line of ESD accessories to ensure a static free workplace and protect employees and sensitive electrical equipment.

Use these accessories to connect table work surface, employees and conductive material to a common grounding point. This creates a balance between all items and personnel to ensure static electricity will flow to ground in a controlled manner.

Recommended uses:

- For use under electrostatic sensitive components

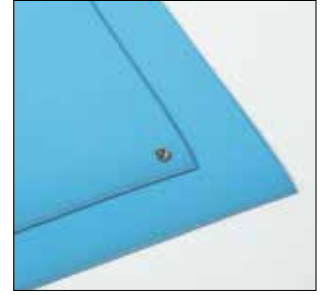
ANTI-STAT P

827 Anti-Stat POP™

Static dissipative vinyl work surface that dissipates static from conductive items placed on it. Protects table and keeps sensitive components safe from damaging static shocks. Smooth top surface that is abrasion resistant and easy to wipe clean with recommended art. 057 Mat Cleaner. Optional grounding cord.

Specifications:

- Microcellular vinyl foam treated with dissipative static properties
- Overall thickness: 6.4 mm
- Weight: 3 kg per m²
- Meets EOS/ESD-S4, measured resistance Rg 10⁷ Ω and Rp 10⁸ Ω
- Electrostatic charge (walking test), meets ISO6356 and EN1815



Colours:

- Blue

Custom lengths:

- 60 cm per linear meter
- 76 cm per linear meter
- 91 cm per linear meter

Stock sizes:

- 60 cm x 12.2 m
- 76 cm x 12.2 m
- 91 cm x 12.2 m



Ring terminal Art. 051SFG0100



Female socket Art. 051SFG0200



Ring terminal Art. 052SCG0100



Female socket Art. 052SCG0200

Art. 051 Floor Mat Grounding Cord

- 4,5m cable and connector that connects a mat to ground
- Easy to install, simply snap it to a mat and connect terminal to ground
- The low profile bevelled cap prevents the cord from being accidentally removed from the mat
- Resistor 1 Meg mat to ground
- Available with a ring terminal or 10 mm female socket that connects to grounding plug
- Meets the requirements of ANSI/ESD S-20.20 and EIA625

Art. 052 Common Grounding Point Cord

- 4,5m cable connects one or two wrist bands and a bench mat to ground
- Assures that all parts are at the same ground potential
- Easy to install, simply snap it to a mat, plug in the wrist strap coil cord and connect terminal to ground
- Resistor 1 Meg mat to ground
- Available with a ring terminal or 10 mm female socket that connects to grounding plug
- Meets the requirements of ANSI/ESD S-20.20, EIA625 and ANSI/ESD S6.1



Continental Version
Art. 054SEB0100

UK Version
Art. 054SEB0200



Art. 055 Heel Grounder

- A device for connecting a walking or standing person to ground by using a conductive rubber thread to provide the necessary electrical contact between the person and the floor mat



Art. 053 Coil Cord

- 1,8m cable connects wristband to common ground point on table mat
- 1 Meg resistor, 10 mm socket snaps to wristband, and the other end is a banana plug
- Meets the requirements of EOS/ESD S1, MIL-STD-1686, and EIA 625



Art. 056 Wrist Band

- Wrist Bands connect a worker's skin to ground and are therefore the primary means of controlling static charge on personnel. When properly worn and connected to ground, static charges are safely dissipated from the person
- Meets the requirements of EOS/ESD S1, MIL-STD-1686, and EIA 625

Art. 054 Earth Bonding Plug

- Connects grounding cords to ground
- 1 Meg Resistor, 3 x 10 mm male studs, allowing multiple cord connections per plug
- Available in Continental or U.K. version

Art. 057 Mat Cleaner

- Mat cleaner is recommended for static safe table and floor mats. Its non-abrasive formula leaves no film and is designed to enhance the static dissipative properties of ESD safe surfaces. Effectively removes flux residues, oil, finger marks and dirt.
- Convenient 950 ml bottle trigger spray





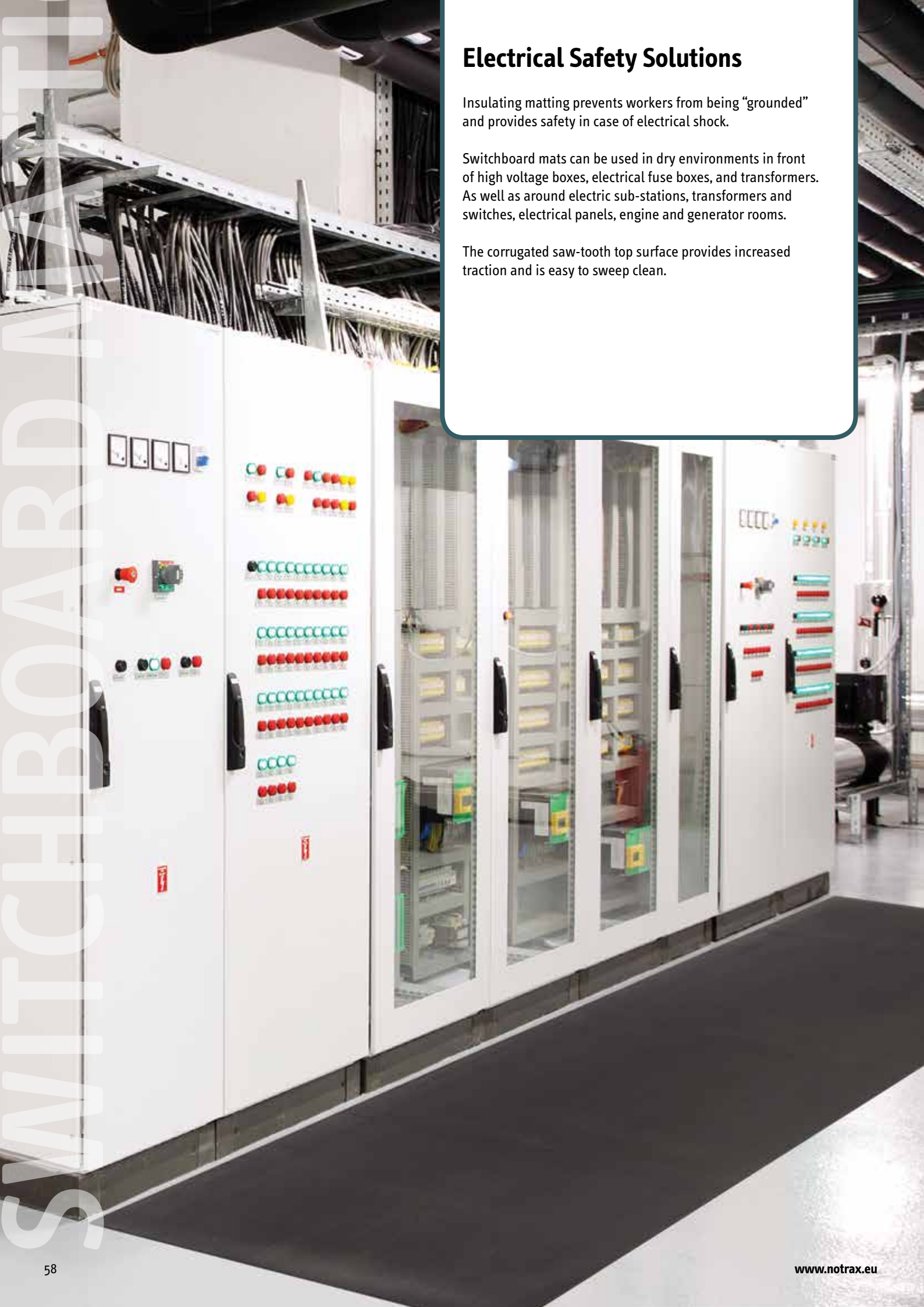
Electrical Safety Solutions

Insulating matting prevents workers from being “grounded” and provides safety in case of electrical shock.

Switchboard mats can be used in dry environments in front of high voltage boxes, electrical fuse boxes, and transformers. As well as around electric sub-stations, transformers and switches, electrical panels, engine and generator rooms.

The corrugated saw-tooth top surface provides increased traction and is easy to sweep clean.

SWITCHBOARD



830 Switchboard Matting™

Non-conductive switchboard mats are designed to provide insulation for the worker. Made from a PVC compound, the mat prevents the worker from being grounded, thereby eliminating the possibility of electrical shock.

Top surface with corrugated rib pattern, enhances traction and is easy to sweep clean. Underside has fabric impression.

Must be replaced every 12 months for optimum safety.

Specifications:

- PVC compound.
- Overall thickness: 6.4 mm.
- Weight: 8.4 kg per m².
- Free of DOP, free of DMF, free of ozone depleting substances, free of silicone and free of heavy metals.
- Each square inch of matting is tested in conformance with ANSI/ASTM D-178 specifications.
- Class 2 - Dielectric Strength: 30.000 V.
- Proof Test: 20.000 Volts.
- Recommended maximum usage: 17.000 Volts.
- Hardness: 80 Shore A.
- Tensile strength (ASTM D412): 961 Min.
- Elongation at break (ASTM D412): 278%.

Recommended uses:

- Heavy duty – dry industrial environments, around electric sub-stations, transformers and switches, electrical panels, engine and generator rooms

Colours:

- Black

Stock sizes:

- 91 cm x 150 cm

Full rolls 22.8 m:

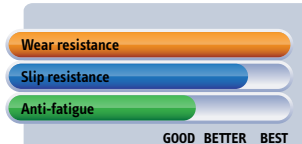
- 91 cm x 22.8 m

Custom lengths:

- 91 cm width per linear meter



PRODUCT TESTING



Excessive Oily Area Solutions

Anti-fatigue matting designed for combined use with a sorbent. Ramps on four sides are raised to form a holder tray around the mat. Rough "gripper" surface prevents the sorbent from shifting.

Made of a high quality nitrile rubber compound that is resistant to most industrial oils and designed to yield a long service life. Non-shifting. Free of silicone therefore safe for vehicle painting facilities.

Inside measurements: 80 cm x 150 cm to suit most standard rolls of sorbents. Mat is furnished with sorbent and refills are available per increments of 150 cm.

Accessories:

- Heavy duty sorbent, with added layer for extra durability
- Standard sorbent

Stock sizes:

- 80 cm x 150 cm

Full Rolls 200 m:

- 80 cm width

Custom sizes:

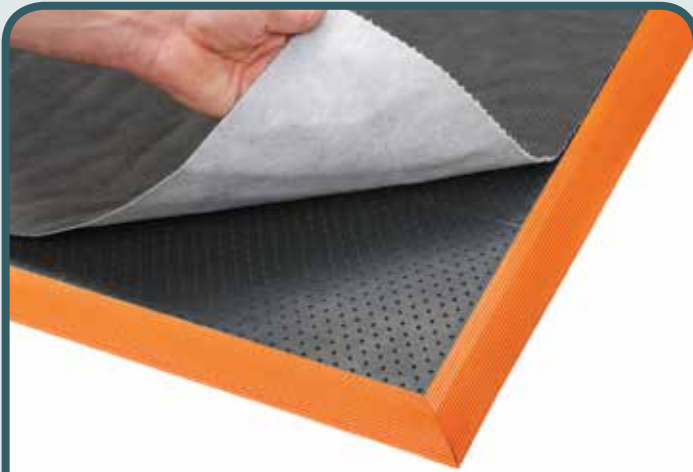
- 80 cm width per increments of 150 cm.



Standard sorbent, grey

Heavy duty sorbent, black

Industrial Specialties



580 Sorb Stance™

For industrial users who insist on comfort and strength.

Ergonomic benefit derived from 16 mm thick worker platform with raised studs on the backside to provide aeration and excellent cushioning comfort.

Highly visible nitrile rubber orange coloured borders for added safety. Lengths are incremental by 152 cm.

Specifications:

- Nitrile rubber compound, resistant to most industrial oils
- Orange coloured borders included comply with OSHA Code 1910-144.
- Overall thickness: 19 mm
- Weight: 12 kg per m²
- Free of DOP, free of DMF, free of ozone depleting substances, free of silicone and free of heavy metals

Recommended uses:

- Heavy duty - wet/oily industrial environments

Colours:

- Black

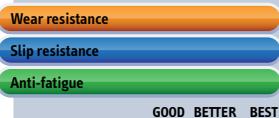
Stock sizes:

- 91 cm x 163 cm
- 91 cm x 316 cm
- 91 cm x 468 cm

Custom sizes:

- Available on demand

PRODUCT TESTING



GOOD BETTER BEST

Mats with Sorbents



585 Eco Stance™

Ergonomic benefit derived from 12.7 mm thick worker platform with a bubble design and moulded air pockets underneath provide buoyancy for basic fatigue relief.

Specifications:

- Nitrile rubber compound, resistant to most industrial oils
- Overall thickness: 12.7 mm
- Weight: 6.8 kg per m²
- Free of DOP, free of DMF, free of ozone depleting substances, free of silicone and free of heavy metals

Recommended uses:

- Medium duty - wet/oily industrial environments

Colours:

- Black

Stock sizes:

- 87 cm x 157 cm

PRODUCT TESTING



GOOD BETTER BEST

Solutions to Protect Floors and Equipment

Durable protection mats protect both floors and heavy equipment from damage.

The thick platform can withstand heavy weights while the non-slip textured top surface ensures sure footing and freedom of movement.

Made of tough rubber compounds that make the mats virtually indestructible. Free of DOP, free of DMF, free of ozone depleting substances, free of silicone and free of heavy metals.

Recommended uses:

- Heavy duty - dry areas for storage of heavy industrial equipment such as mould tools and engine blocks. Also suitable for gyms, weight rooms, skating rinks, golf courses, trailers and stables.

Industrial Specialties



040 Slabmat Carré™

High quality 100% natural rubber mat that absorbs shock of fallen materials and protects floors and equipment.

These interlocking mats allow on-site customization. Units of 91 cm x 91 cm can be easily laid out from wall to wall or as islands, in any direction or shape. Bevelled solutions; allow out and inside corners.

Specifications:

- Heavy duty 100% natural rubber compound
- Overall thickness: 13 mm
- Weight: 18 kg per m²

Colours:

- Black

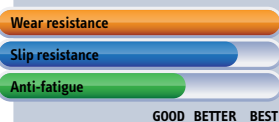
Stock sizes:

- 91 cm x 91 cm

Accessories:

- Sturdy male and female attachable bevels 91 cm x 10 cm black

PRODUCT TESTING



GOOD BETTER BEST

Shock Absorbing Matting



045 Slabmat™

Indestructible rubber mat that absorbs shock of fallen materials and protects floors and equipment. Loose lay mat with no installation required.

Specifications:

- Tough rubber compound
- Overall thickness: 12.7 mm
- Weight: 18 kg per m²

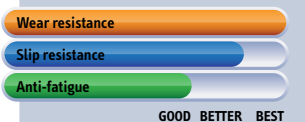
Colours:

- Black

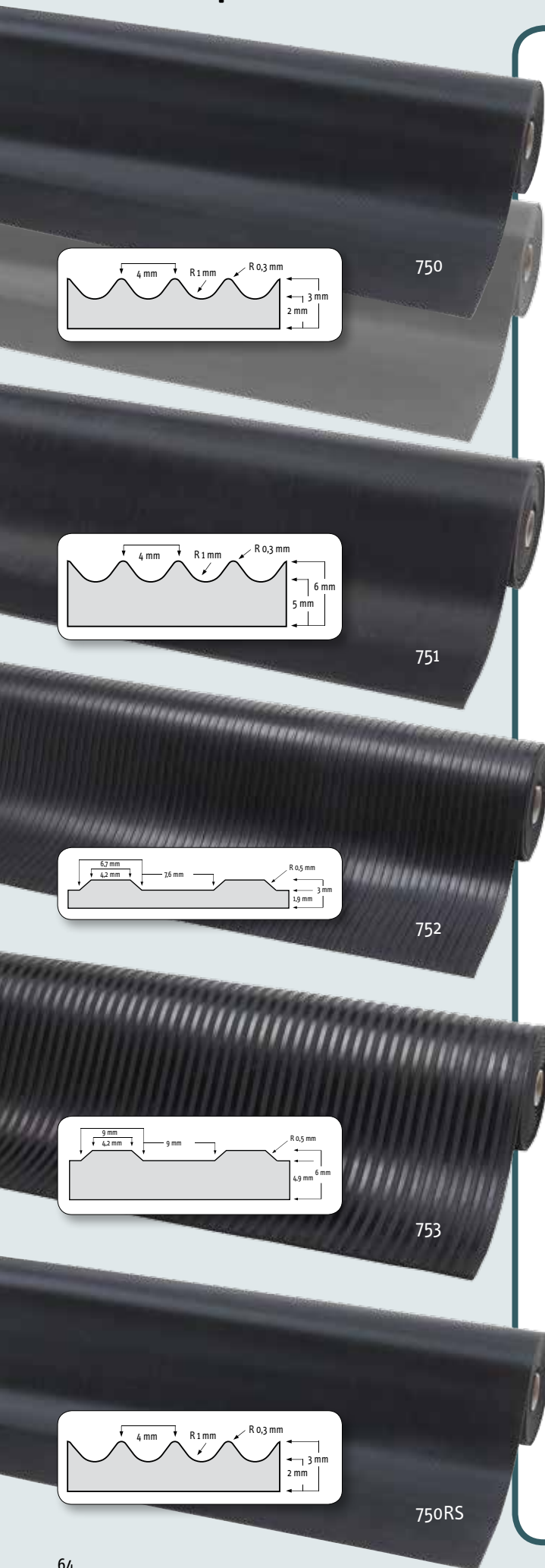
Stock sizes:

- 120 cm x 180 cm

PRODUCT TESTING



GOOD BETTER BEST



Matting with excellent wear and tear resistance. Used as flooring, shelf liners and in all kinds of industrial applications in workshops, near machines and any place where objects may tend to slide on workbenches, carts, cars or lorry booths. Withstands diluted acids and alkalis.

750 Rib 'n' Roll™ 3 mm fine rib

- SBR rubber
- Surface: fine rib profile
- Hardness (ISO7619, DIN53505): 60 Shore A
- Specific gravity (DIN53519): black 1.5 g/m³
- Tensile strength (DIN53504): 3.5 Mpa
- Elongation at break (DIN53504): 250%
- Abrasive resistance (ISO4649, DIN53516): 300-500 mm³
- Resistance to temperature black -30°C, +70°C, grey -20°C, +70°C.
- Stock sizes: black 100 cm x 10 m, 120 cm x 10 m
- Stock sizes: grey 100 cm x 10 m
- Available by the linear meter



751 Rib 'n' Roll™ 6 mm fine rib

- Surface: fine rib profile
- Stock sizes: black 100 cm x 10 m
- Available by the linear meter



752 Rib 'n' Roll™ 3 mm broad rib

- Surface: broad rib profile
- Stock sizes: black 100 cm x 10 m, 120 cm x 10 m
- Available by the linear meter



753 Rib 'n' Roll™ 6 mm broad rib

- Surface: broad rib profile
- Stock sizes: black 120 cm x 10 m
- Available by the linear meter



750RS Rib 'n' Roll™ RS 3 mm fine rib

- NBR/SBR rubber compound, grease resistant
- Surface: fine rib profile
- Hardness (ISO7619, DIN53505): 60 Shore A
- Specific gravity (DIN53519): black 1.5 g/m³
- Tensile strength (DIN53504): 3.5 Mpa
- Elongation at break (DIN53504): 250%
- Abrasive resistance (ISO4649, DIN53516): 300-500 mm³
- Resistance to temperature black -10°C, +70°C.
- Stock sizes: black 100 cm x 10 m
- Available by the linear meter



746 Check 'n' Roll™ 3 mm

Ideal flooring for factory and warehouse premises or any kind of industrial applications to protect floors and materials. Withstands diluted acids and alkalis.

- NR-SBR rubber
- Surface: industrial checker plate profile
- Hardness (ISO7619, DIN53505): 70 Shore A
- Density: black 1,45 g/m³, grey 1,60 g/m³
- Tear strength (ISO 34-1): black 4 N/mm², grey 5 N/mm²
- Elongation at break: black 200%, grey 350%
- Abrasive resistance (ISO4649, DIN53516): 300-500 mm³
- Dimensional stability (EN 434): 0.15%
- Resistance to temperature black -30°C, +70°C, grey -20°C, +70°C.
- Sound reduction: 20 dB
- Stock sizes: black 140 cm x 10 m
- Stock sizes: grey 140 cm x 10 m
- Available by the linear meter



746GR Check'n'Roll™ 3 mm nitrile

- NBR (nitrile) rubber
- Surface: industrial checker plate profile
- Oil resistant
- Hardness (ISO7619, DIN53505): 65 Shore A
- Density 1.43 g/m³
- Tear strength (ISO 34-1): 7 N/mm²
- Elongation at break: 250%
- Abrasive resistance (ISO4649, DIN53516): 300-500 mm³
- Dimensional stability (EN 434): 0.15%
- Resistance to temperature -10°C, +70°C.
- Sound reduction: 20 dB
- Stock sizes: black 140 cm x 10 m
- Available by the linear meter



745 Dots'n'Roll™ 3.5 mm

All-round floor covering for industrial and general applications. Suitable for buildings, walking areas, stations, airports, supermarkets, lifts, buses, ships, etc

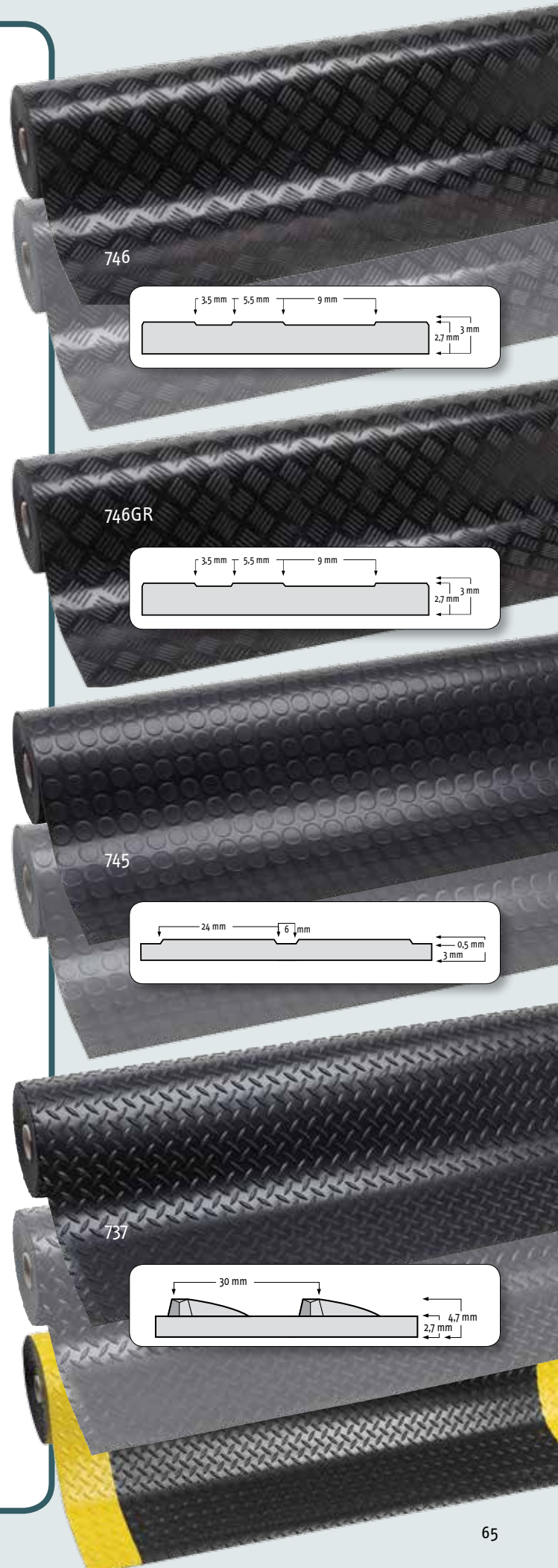
- SBR rubber
- Surface: profile of mildly raised dots
- Hardness (ISO7619) 75 Shore A
- Tear strength (ISO 34-1): 20 N/mm²
- Elongation at break: 250%
- Abrasive resistance (ISO4649): 250 mm³
- Dimensional stability (EN 434): 0.4%
- Resistance to temperature -20°C, +70°C
- Sound reduction: 20 dB
- Stock sizes: black 100 cm x 10 m
- Stock sizes: grey 100 cm x 10 m



737 Diamond Plate Runner™ 4.7 mm

Durable industrial vinyl flooring with rugged deck plate pattern for non-directional anti-slip

- PVC compound, resistant to industrial oils
- Surface: profile of raised diamonds
- Hardness (ISO7619) 83 Shore A
- Tear strength (ASTMD-1004): 35 N/mm²
- Elongation at break: 225%
- Abrasive resistance: 0,09 grams lost maximum
- Flammability: Bfl-S1 fire rating, testing according to EN 13501-1
- Stock sizes: black 91 cm x 22.8 m, 122 cm x 22.8 m
- Stock sizes: grey 91 cm x 22.8 m, 122 cm x 22.8 m
- Stock sizes: black/yellow 91 cm x 22.8 m, 122 cm x 22.8 m
- Available by the linear meter



Food Processing and Food Service Matting Solutions

Balancing Food Safety & Employee Safety

Preparation and food handling is the most critical phase to be vigilant about food safety for HACCP standards in commercial kitchens and food production facilities, but also food operators, including importers, manufacturers, packers, distributors, retailers, food services and institutions. HACCP (Hazard Analysis Critical Control Point) is a rigorous program that monitors the temperature and condition of food at various "critical points" along the path to the customer to ensure food safety is in accordance with today's tough food handling regulations.

The goal is to prevent cross contamination from workers and environment to food while maintaining employee safety when handling knives and operating equipment, preserve employee well-being in strenuous circumstances and increase productivity for workers often standing for the duration of their day. Floor matting is a great way to prevent injury risk and while improving productivity on the short term and reducing absenteeism and work-related illnesses on the long term.

Notrax® offers the perfect solution for standing workers because, like no other producer of mats, we understand the difference of perceptions of workers as well as the variety of workplace conditions that exist. Notrax® floor mats are made of specific formulations and with designs that provide good adherence and instant evacuation of fluids, which is an effective, economical and durable solution to reduce the risk of slip falls.

Increasing safety

Slips and falls are responsible for 20 to 30% of the accidents that cause long-term interruption of work. According to the National Floor Safety Institute and the U.S. Department of Labor, more than three million foodservice workers have a slip-and-fall accident every year. This is costing the foodservice industry more than \$2 billion annually, an expense that is increasing at a rate of 10 percent per year.

And the most common reason for these slip-and-fall accidents is soil and grease build up on the floor. Particularly in the food processing industry, the biggest problem is that floors must be smooth to facilitate cleaning and disinfecting. But, "the presence of water, vegetable oils, animal fats, blood, flour, and various biological waste makes these grounds extremely dangerous and the falls are all the more serious as employees often handle blunt objects", underlines Henri Saulnier, head of IET (Work Equipment Engineering) at the French INRS.

According to reports, 50 percent of facility accidents can actually be attributed to the type of flooring used. Just cleaning of floors is not enough to prevent floors from getting slippery. Wildbrett & Sauer (1992) observed that even coated anti-slip floors in contact with for example, milk products, become clogged after cleaning due to an accumulation of microscopic residual stains (protein, grease). One would have to keep on changing floors to ensure the effectiveness



of an anti-slip coating. Further, a lot of damage is caused by falling objects. Think of chinaware and glasses in the foodservice industry, and tools such as knives frequently used in the food processing industry.

Anti-Fatigue

The OSHA (Organization for Safety & Health Administration) cites "prolonged standing and repetitive or prolonged motions such as reaching, lifting, and chopping while preparing food in food preparation areas as one of the hazards for kitchen workers. Static postures may occur as workers continuously stand in one position while chopping or preparing food, causing muscle fatigue and pooling of blood in the lower extremities. Awkward neck postures can lead to neck strains and muscle stiffness if cooks are constantly tilting their heads downward to chop, dice, and mix food."

The OSHA therefore recommends employers to provide anti-fatigue mats in addition to avoiding static postures. "Anti-fatigue mats help contract and expand muscles of the person standing on them increasing blood-flow and reducing fatigue."

Prof. Dr. Redha Taiar (2011) at the University of Reims in France also noted imbalance as second cause of fatigue.

In addition to overuse of the same muscles, when the system is out of balance, the muscles must work harder to search for balance and the quick reaction speed is maintained at the cost of energy (fatigue). In a nutshell, to regain balance 'quick reaction /energy saving/ effectiveness'. Such unbalance is very harmful for the human body. The use of anti-fatigue mats enables correct balancing and a uniform

distribution between the right and left leg. Prof. Taiar's findings confirmed that pains are substantially reduced with the use of anti-fatigue mats compared to the initial situation without mats.

Well Being

Kitchen workers often work in areas with extreme temperatures, cold for preserving food during cleaning, preparation and packaging, or warm during cooking and serving. Factory floors, particularly in the food processing industry, are often cold and wet. Floor mats elevate standing workers from cold floors. This helps keep their feet warmer thereby improving the overall perception of well-being.

Sanitation

The first step in kitchen hygiene is preventing contaminants from entering. All people entering food processing, storage, distribution and handling areas have an appropriate degree of personal cleanliness and take the appropriate precautions to prevent the contamination of food and food contact surfaces. Therefore workers should enter under conditions that prevent, eliminate or reduce contamination.

Notrax® floor mats are manufactured from durable nitrile rubber compounds that resist exposure to vegetable oils and grease. The top of the line Notrax® San-Eze II® is also manufactured with MicroStop™, an anti-microbial rubber compound made from a

specially formulated blend of raw materials that inhibits the growth of micro-organisms such as bacteria, and fungi that can cause odour, stains, and product deterioration.

All MicroStop™ products pass ASTM G-21, the test used by NSF/ANSI for standard 52.

Notrax® Food Processing and Food Service Matting Solutions

The acquisition of Teknor Apex® Food Service Matting Division in 2007 brought to Superior Manufacturing Group 40 years of additional experience, a full product line, patents and trademarks, equipment and expertise. This brochure is the result of frequent requests from European end-users and distributors to introduce a European product selection that offers more safety and comfort to employees working in the food processing and foodservice industry.

Your selection should be determined by the optimum combination of comfort (anti-fatigue), surface design, drainage capacity, quality and durability, as well as oil/grease resistance, and cleaning regimen.

346 Sani-Trax™

This mat cleans and sanitizes shoes, recommended at entrances to all food processing areas. Thousands of flexible fingers provide an automatic scrubbing action that dislodges contaminants from footwear. As traffic passes, rubber tips bend under pressure to immerse soles in disinfectant solution, a double action that keeps contamination from reaching food processing areas. Convenient mat size fits most doorways. Suction cups on underside prevents mat from shifting.

Specifications:

- Made of 100% tough natural rubber compound for general purpose applications; designed to resist to most chemicals and variations in temperature.
- Overall thickness: 19 mm.
- Weight: 10.8 kg per m².
- Thick surrounding border stands >0,635 cm higher than finger-scrapers to contain liquid disinfectant. Mat holds 4½ litres of disinfectant solution. (Tip: use quaternary ammonium, iodine, chlorine or any other sanitizer but always test its concentration. Most sanitizers are concentrated and must be diluted before use in a footbath. Follow label directions for appropriate dilutions).
- Free of DOP, free of DMF, free of ozone depleting substances, free of silicone and free of heavy metals.

Recommended uses:

- At doorways, starter rooms, packaging areas, laboratories, employee locker rooms, break rooms, refuse areas and receiving rooms-any place where spread of contamination needs to be limited.



Colours:

- Black

Stock sizes:

- 61 cm x 81 cm



PRODUCT TESTING





SAN-EZE IITM

T11 San-Eze II®

Provides superior comfort and traction in wet or greasy areas. Manufactured with MicroStop™ anti-microbial that inhibits the growth of bacteria and fungi to provide a cleaner and healthier work environment. Made of tough nitrile rubber compound, designed to yield a long service life. Aggressive slip resistant surface. Non-shifting: heavy weight keeps mat in place.

Ergonomic benefit derived from 22.2 mm thick worker platform. Large drainage holes and raised studs provide aeration and allow fluids and debris to fall through, leaving the surface clear. Bevelled ramps available to reduce trip hazards. Cleaning with detergent and water-jet is recommended for extended service life.

Specifications:

- 100% nitrile rubber compound, oil/grease proof
- Manufactured with MicroStop™. Resists Gram Positive bacteria
- Overall thickness: 20 mm
- Weight: 10.1 kg per m²
- Tested and certified by the National Sanitation Foundation (NSF)
- Free of DOP, free of DMF, free of ozone depleting substances, free of silicone and free of heavy metals
- Flammability Ignition characteristics CPSC FF 1-70: Pass ASTM D2859



Recommended uses:

- Wet, oily/greasy areas - food processing (meat, fish), professional kitchens

Colours:

- Red

Stock sizes:

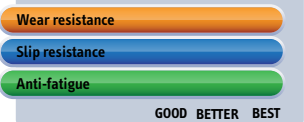
- 99 cm x 149 cm
- 99 cm x 99 cm
- 99 cm x 74 cm
- 99 cm x 50 cm

Accessories:

- Connectors
- Bevels



PRODUCT TESTING



563RD Sanitop Deluxe™ Red

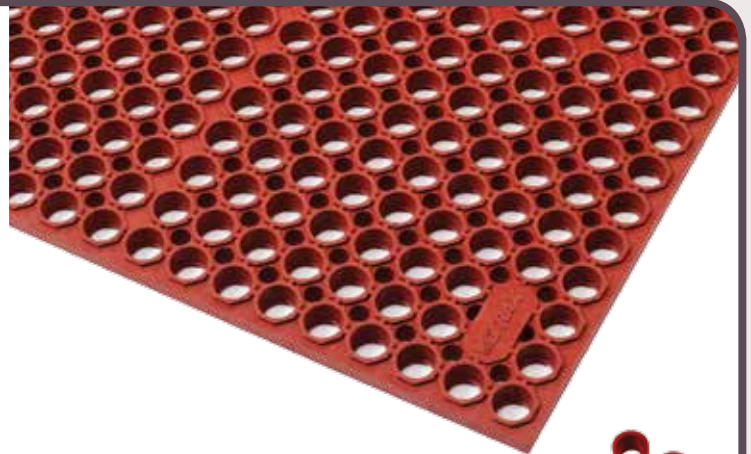
Safety and comfort unite in this product. Strait edges allow coverage of any area through linking the mats lengthwise or side by side, held together by connectors. Made of tough rubber compounds, designed to yield a long service life. Aggressive slip resistant surface. Non-shifting: heavy weight keeps mat in place.

Ergonomic benefit derived from 20 mm thick worker platform. Large drainage holes and raised studs provide aeration and allow fluids and debris to fall through, leaving the surface clear. Bevelled ramps are available to reduce trip hazards. Cleaning with detergent and water-jet is recommended for extended service life.

Specifications:

- 75% nitrile rubber compound, resistant to oils and greases
- Overall thickness: 20 mm
- Weight: 12.3 kg per m²
- Free of DOP, free of DMF, free of ozone depleting substances, free of silicone and free of heavy metals
- Flammability Ignition characteristics CPSC FF 1-70: Pass ASTM D2859

563 Sanitop Deluxe™ is also available in a natural rubber compound for general purpose applications (page 41).



Recommended uses:

- Wet or oily/greasy areas – food processing, professional kitchens, bars

Colours:

- Red

Accessories:

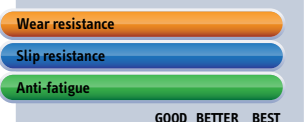
- Connectors for width-wise or lengthwise expansion

Stock sizes:

- 91 cm x 152 cm



PRODUCT TESTING



CUSHIONFEASTMRE

Ergonomy on Slippery Floors

These mats are designed to meet individual food industry requirements. Ergonomic benefit derived from 12.7 - 19 mm thick worker platform made of a tough yet resilient nitrile rubber compound that is resistant to vegetable oils and greases.

Anti-slip surface provides sure footing even in slippery environments. Bevelled edges prevent tripping on the mat.

Available in closed version or with drainage holes. Cleaning with detergent and water-jet is recommended for extended service life.

550RD Cushion Ease™ Red

Square snap together units of 91 x 91 cm that can be assembled effortlessly and laid out from wall to wall or as island in any direction or shape. Smooth slip resistant surface.

Specifications:

- 75% nitrile rubber compound, resistant to oils and greases
- Overall thickness: 19 mm
- Weight: 10 kg per m²

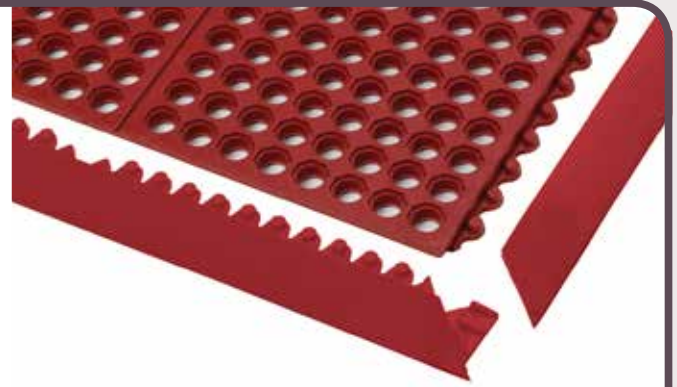
Stock sizes:

- 91 cm x 91 cm

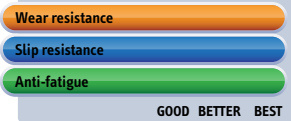
Accessories:

- 551 MD Ramp System™ Nitrile male and female bevels in red, yellow and black

Cushion Ease™ is also available in other rubber compounds. See the entire Cushion Ease™ and Cushion Ease Solid™ line in the Notrax® Industrial Mats (page 39).



PRODUCT TESTING



562RD Sanitop™ Red

Provides basic comfort and traction in wet or greasy areas. Large drainage holes and raised studs provide aeration and allow fluids and debris to fall through, leaving the surface clear. Aggressive slip resistant surface.

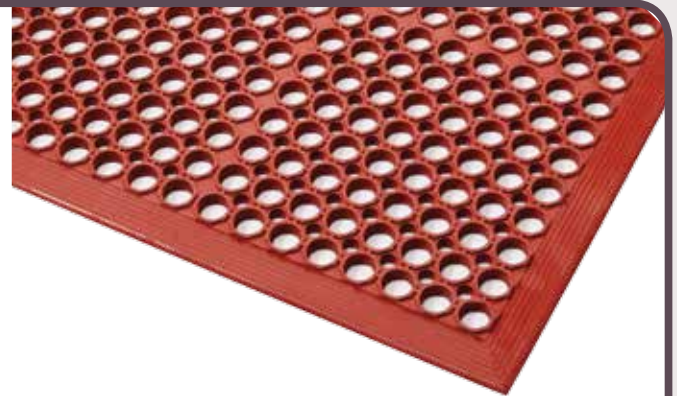
Specifications:

- 75% nitrile rubber compound, resistant to oils and greases
- Overall thickness: 12.7 mm
- Weight: 8 kg per m²

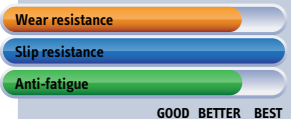
Stock sizes:

- 91 cm x 152 cm
- 91 cm x 297 cm
- 91 cm x 594 cm

562 Sanitop™ is also available in a natural rubber compound for general purpose applications. See the Notrax® Industrial Mats (page 41).



PRODUCT TESTING



458 Skystep™ Red

Standalone rubber mats have a gritted surface pattern with ergonomic bubble to provide maximum fatigue relief while maintaining its anti-slip properties. The mat is designed to suction to the ground to prevent the mat from shifting while trapping air in its chambers to create an ultimate cushioning effect while keeping the mat lightweight.

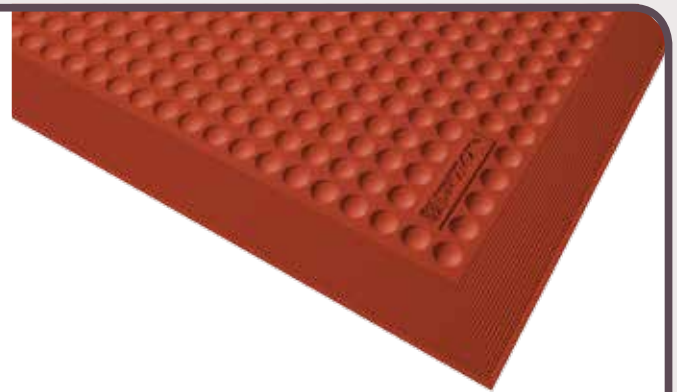
Specifications:

- 75% nitrile rubber compound, resistant to oils and greases
- Overall thickness: 13 mm
- Weight: 10 kg per m²

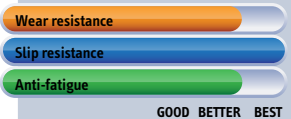
Stock sizes:

- 60 cm x 90 cm
- 90 cm x 120 cm
- 90 cm x 150 cm

Skystep™ is also available in other rubber compounds. See the entire Skystep™ line in the Notrax® Industrial Mats (page 31).



PRODUCT TESTING





Reversible Anti-Slip Mats

Reversible anti-slip matting with non-skid surfaces add traction for good adherence in dry, wet and greasy areas. Useable on both sides for extended life.

An effective, economical and durable solution to reduce the risk of slip falls. Low profile for easy cart access. Light weight to facilitate lifting and cleaning. Ergonomic benefit derived from 9.5 mm thick worker platform with raised studs provide grip and aeration and keeps mat from shifting. Cleaning with detergent and water-jet is recommended for extended service life.

Made from a nitrile rubber compound. Free of DOP, free of DMF, free of ozone depleting substances, free of silicone and free of heavy metals.

Recommended uses:

- Wet or oily/greasy areas – food processing professional kitchens, bars

T23RD Multi Mat II® Red

Drainage holes for instant evacuation of fluids allow debris to fall through, leaving the surface clear.

Specifications:

- 75% nitrile rubber compound, resistant to oils and greases
- Overall thickness: 9.5 mm
- Weight: 9.9 kg per m²
- Slip resistance R10 measured according to DIN 51130

Colours:

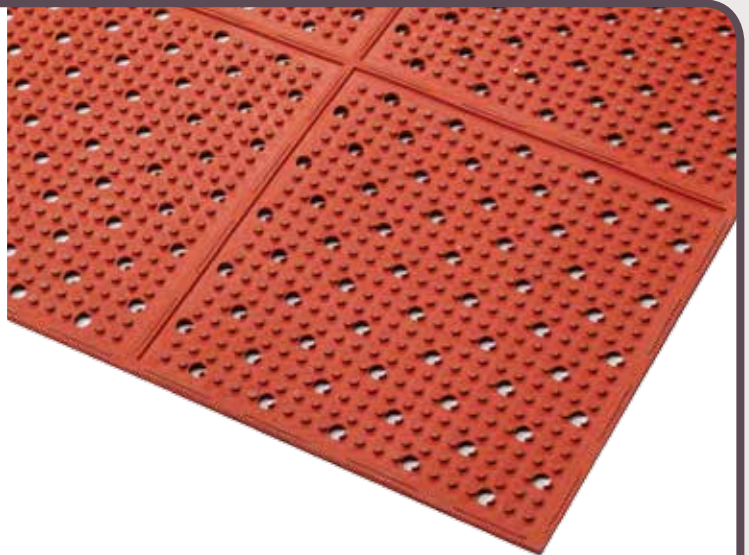
- Red

Stock sizes:

- 91 cm x 122 cm
- 91 cm x 244 cm

Full rolls 9.75 m:

- 91 cm wide



T23 Multi Mat II® is also available in a natural rubber compound for general purpose applications. See the Notrax® Industrial Mats (page 47).



PRODUCT TESTING



T21RD Multi Mat II® Solid Red

Solid anti-slip mat with raised studs for grip and aeration.

Specifications:

- 75% nitrile rubber compound, resistant to oils and greases
- Overall thickness: 9.5 mm
- Weight: 9.9 kg per m²
- Slip resistance R10 measured according to DIN 51130

Colours:

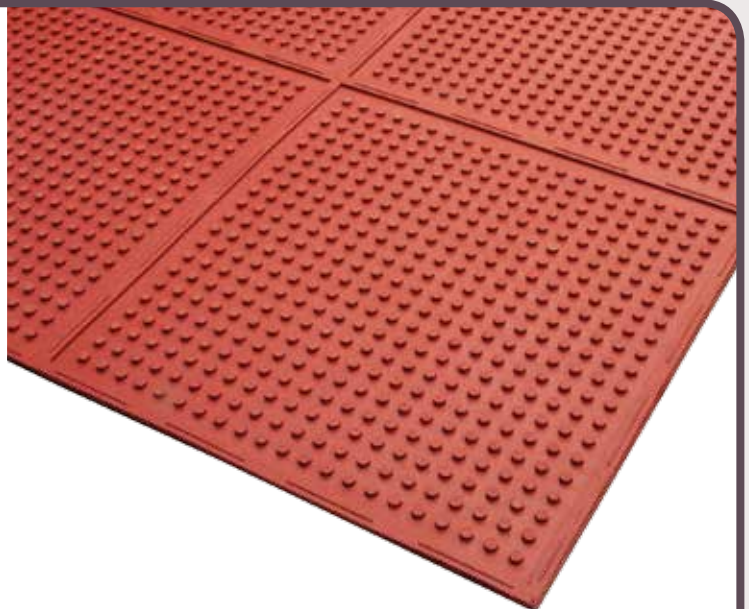
- Red

Stock sizes:

- 91 cm x 122 cm
- 91 cm x 244 cm

Full rolls 9.75 m:

- 91 cm wide



T21 Multi Mat II® is also available in a natural rubber compound for general purpose applications. See the Notrax® Industrial Mats (page 47).



PRODUCT TESTING



Anti-Slip Hygienic Matting Solutions

Notrax® hygienic mats create a healthier and safer environment in shower facilities and locker rooms.

Why hygienic mats?

Communal sports and leisure environments, which are rarely regulated by health authorities, are ideal breeding areas for bacteria that spread infections.

Hygiene policies are already quite common practice for shared facilities including no-shoes policies (to prevent the entrance and spreading of dirt and contaminants), shower habits (before entering pools and hot tubs), hand hygiene, cleaning and disinfection procedures, and avoiding sharing (towels and personal items that come into contact with bare skin).

Recently several severe health cases of staph infection (MRSA methicillin-resistant staphylococcus aureus), contracted in gyms and locker rooms have resulted in increasing attention being paid to hygiene in public showers, gyms, changing rooms and locker rooms.

Hygienic matting is a key component of a hygiene policy. Hygienic matting is treated with an anti-microbial to prevent growth of bacteria, fungi and other micro-organisms that cause odours, rashes, athlete's foot and other skin infections. The mat is designed to be comfortable and warm for bare feet, isolating users from the cold and often wet floors, while also offering grip for slip prevention.

Why also anti-slip?

One of the most common causes of swimming pool accidents is slips and falls. In and around shared changing rooms, locker rooms, swimming pools and showers are a slip hazard with wet, slippery and cold floors. Plus the use of shampoos, soaps and oils often compound this problem.

So hygienic mats are also designed to provide secure footing where excess water, oils and shampoos would otherwise make floors or tiles slippery. The anti-slip surface is designed to provide traction, while still being comfortable and warm for bare feet. The gripper base prevents the mat from sliding or shifting.

Why Matting?

Anti-slip materials do not last forever. Coated anti-slip flooring can become clogged even after cleaning due to an accumulation of microscopic residual stains (oils, protein, grease). One would have to keep on checking, maintaining and replacing floors to ensure the effectiveness of an anti-slip coating in and around swimming pools so that it is safe for swimmers to use. When this hasn't happened and pool sides become dangerously slippery, it is very easy for swimmers to slip or fall and suffer a serious injury. Notrax® floor mats are made





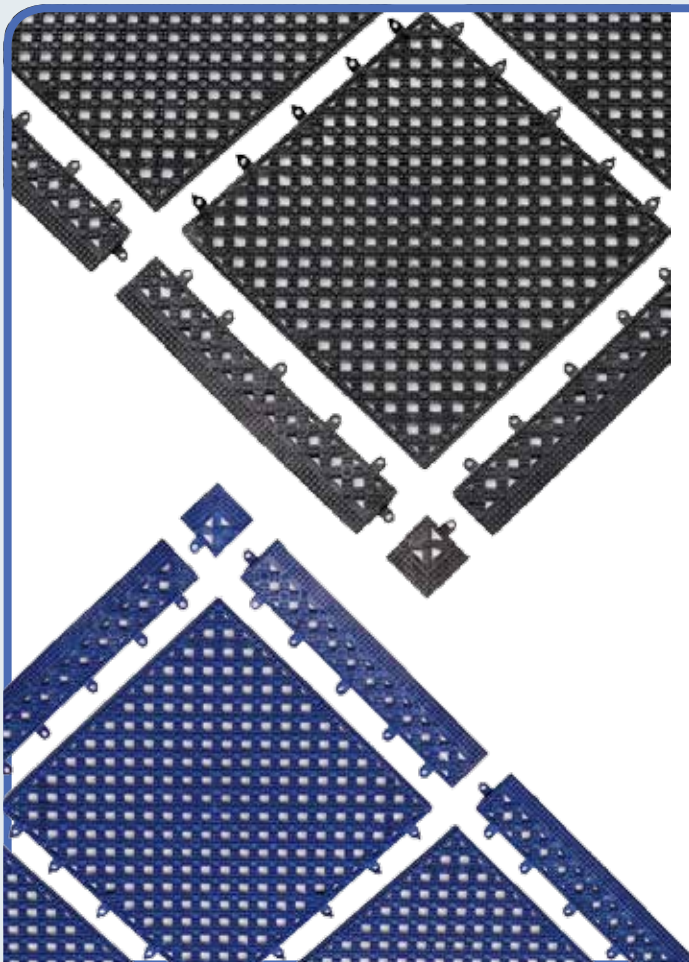
of specific formulations and with designs that provide good adherence and instant evacuation of fluids, which is a more effective, economical and durable solution to reduce the risk of slip falls.

Notrax® Hygienic Matting Solutions

Notrax® has expanded the selection of hygienic mats to be able to offer a full range of heavy, medium and light duty matting products. Their unique design afford not only instant drainage and slip resistance, they also prevent growth of micro-organisms which cause skin disease.

The open grid allows for easy drainage of water while the raised structure provides aeration for easy drying and prevents the mat from floating. The mats are manufactured from PVC or Polyethylene which is resistant to oils from soaps, shampoos, chlorines that are often found in leisure and pool areas.

Notrax® matting is available on rolls or interconnecting tiles that can easily be laid, installed or customized for walkways, changing room floors, showers and saunas, and along swimming pools to prevent slipping.



523 Modular Lok Tyle™

- Medium duty UV resistant antibacterial PVC modular tiles
- Overall thickness: 14,3 mm
- Weight: 5,2 kg per m²

Colours:

- Blue, Black

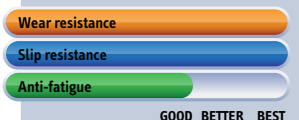
Sizes:

- Tile: 30,5 cm x 30,5 cm

Accessories:

- Bevelled ramps and corners complete the installation and minimize trip hazards
- Ramp: 5 cm x 30,5 cm
- Corner: 5 cm x 5 cm

PRODUCT TESTING



AKWADDEK™

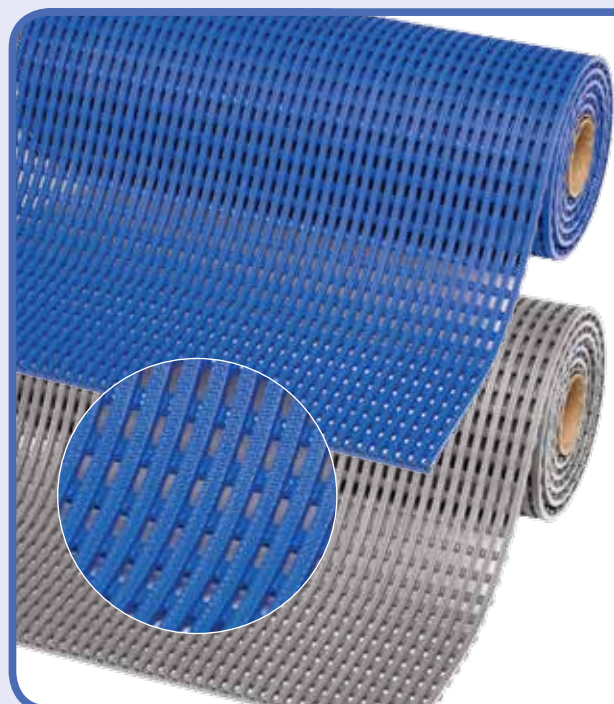
Soft and Warm for Happy Feet

Durable hygienic matting creates a healthier and safer environment in wet areas such as shower facilities. The grip design creates a slip-resistant yet comfortable walking surface for bare feet. Anti-microbial treated materials prevents growth of fungi or bacteria and promotes hygiene in wet areas such as locker rooms, public swimming pools, commercial saunas, and shower facilities.

Open structure for easy draining of water, soap, shampoo and lotions where dependable sure footing is essential. Easy to clean and requires only minimal maintenance.

Recommended uses:

- Shower rooms, locker rooms, changing rooms, wardrobes, swimming pools, saunas, etc.



536 Akwadek™

- Heavy duty UV resistant antibacterial PVC grid matting
- Overall thickness: 12 mm
- Weight: 7,5 kg per m²
- Free of DOP, free of DMF, free of ozone depleting substances, free of silicone and free of heavy metals

Colours:

- Blue, Grey

Full rolls 10 m:

- 60 cm, 91 cm and 122 cm wide

Custom lengths:

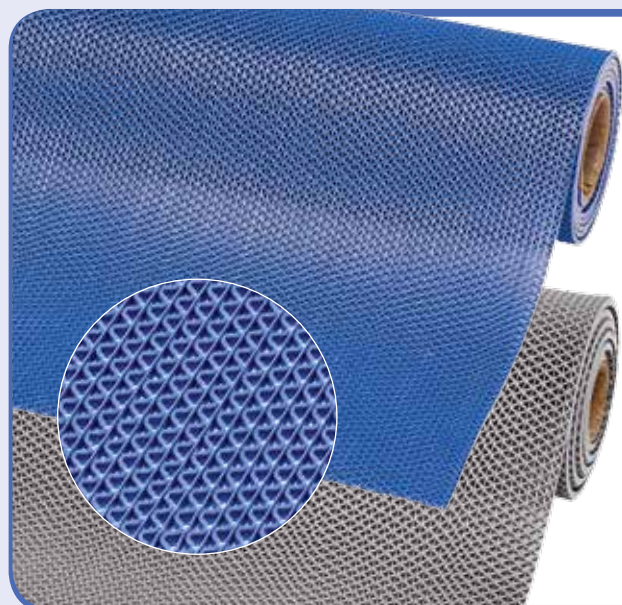
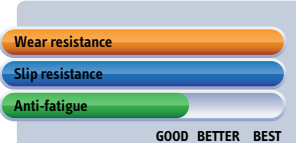
- 60 cm, 91 cm and 122 cm widths per linear meter

Accessories

- Black connector clips available for width-wise/lengthwise expansion
- 90-degree connections



PRODUCT TESTING



538 Gripwalker Lite™

- Light duty UV resistant antibacterial PVC wave matting
- Overall thickness: 5,3 mm
- Weight: 3,6 kg per m²
- Free of DOP, free of DMF, free of ozone depleting substances, free of silicone and free of heavy metals

Colours:

- Blue, Grey

Full rolls 12,2 m:

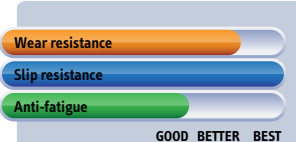
- 91 cm and 122 cm wide

Custom lengths:

- 91 cm and 122 cm widths per linear meter



PRODUCT TESTING



535 Soft-Step™

- Light duty UV resistant antibacterial polyethylene wave matting
- Overall thickness: 9 mm
- Weight: 4,3 kg per m²

Colours:

- White-Dotted, Beige, Blue

Full rolls 15 m:

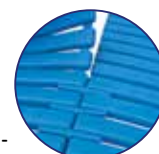
- 60 cm wide

Custom lengths:

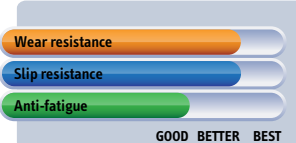
- 60 cm widths per linear meter

Accessories:

- Connector clips available for width-wise expansion



PRODUCT TESTING



Chemical Resistance Guide

Chemical	Form	Chemical Family	Concentration	Article Group				Article Group	
				Article Group	Article Group	Article Group	Article Group		
2-Propanol (Isopropyl alcohol)	Liquid	Alcohol		470, 556, 558, 660, 469, 430, 433, 440, 443, 455, 457, 550, 565, 562, 723, 721, 400, 445, 750, 751, 752, 753, 746, 745, 346	646, 665, 665SFR, 746GR, 856, 665, 462, 466, 465, 469, 432, 434, 435, 442, 444, 445, 458, 546, 665S, 665SFR, 860, 580, 585, 711	750RS, 746GR, 856, 665, 462, 568RD, 568RD, 568RD, 568RD, 458, 737, 825, 827, 827	621, 920, 922, 820, 836, 406, 520, 522, 537, 539, 681, 420, 622, 820, 431, 431, 536, 538	Article Group	
Acetaldehyde	Liquid	Aldehyde	50%	2	4	4	3	2	4
Acetic Acid	Liquid	Acid (weak, organic)	Glacial	3	3	4	4	3	4
Acetic Acid	Liquid	Acid (weak, organic)	50%	2	3	3	4	4	4
Acetic Anhydride	Liquid	Acid (weak)		3	2	3	2	2	3
Acetone	Liquid	Ketone		3	2	4	4	4	4
Acetone	Liquid	Ketone		3	4	3	3	3	4
Ammonium Hydroxide	Liquid	Base (weak)	28-30%	4	4	4	4	1	4
Ammonium Hydroxide	Liquid	Carboxylic Acid (Aliphatic)		4	4	4	3	3	4
Amlyl Acetate	Liquid	Base (aromatic, organic)		4	4	4	4	4	4
Aniline	Liquid	Paraffin Oil		4	1	n/a	n/a	n/a	1
ASTM #1	Liquid			4	1	2	2	2	2
Beef Fat	Solid/Liquid			4	1	2	2	2	2
Benzene	Liquid	Aromatic HC		4	4	4	4	4	4
Benzoin Acid	Liquid	Carboxylic Acid (Aromatic)		4	4	4	1	1	4
Benzyl Alcohol	Liquid	Alcohol		4	4	4	4	4	4
Boric Acid	Liquid	Acid (weak)		1	1	1	1	1	1
Brake Fluid	Liquid	Ether/Glycol		4	4	4	4	4	4
Bromine	Liquid/Gas	Halogen		4	4	4	2	2	4
Butane	Liquid	Aliphatic HC		4	1	3	3	3	3
Butter	Solid/Liquid			4	1	2	1	1	2
Butyl Acetate	Liquid	Carboxylic Acid (Aliphatic)		4	4	4	3	3	4
Butyl Alcohol (butanol)	Liquid	Alcohol		1	1	1	1	1	3
Calcium Chloride	Solid	Inorganic Salt		1	1	1	2	2	1
Calcium Hydroxide	Solid	Metals Hydroxide		1	1	1	2	2	2
Carbonic Acid (liquid phenol)	Liquid	Acid (organic)		4	4	4	4	4	4
Carbon Monoxide	Gas	Inorganic Carbon Compound		3	2	2	1	1	1
Carbon Tetrachloride	Liquid	Halogenated Organic Liquid		4	3	4	4	4	4
Chicken Fat	Solid/Liquid			4	2	2	2	2	2
Chloroacetone	Liquid	Ketone		4	4	4	4	4	4
Chloroform	Liquid	Aliphatic HC		4	4	4	4	4	4
Chromic Acid	Liquid	Acid (weak)	50%	4	4	4	4	4	4
Citric Acid	Liquid	Acid (weak, organic)	10%	1	1	2	2	2	1
Corn Oil	Liquid	Fatty Acid		4	1	2	1	1	1
Coconut Oil	Liquid	Fatty Acid		4	2	3	1	1	1
Cyclohexane	Liquid	Aliphatic HC		4	1	4	4	4	2
Cyclohexanol	Liquid	Alcohol (cyclic)		4	3	3	1	1	---
Cyclohexanone	Liquid	Ketone		4	4	4	4	4	4
Dibutyl Phthalate	Liquid	Ester		4	4	4	3	3	4
Diesel fuel	Liquid	Petroleum HC		4	1	3	3	3	---
Diesel Oil	Liquid	Petroleum HC		4	1	3	3	3	3
Diethyl Phthalate (DOP)	Liquid	Ester		4	3	4	4	4	4
Ethane	Liquid	Aliphatic HC		4	1	1	1	1	2
Ethyl Acetate	Liquid	Ester		2	4	4	3	3	4
Ethyl Alcohol (ethanol)	Liquid	Alcohol		1	1	1	3	3	4
Ethyl Ether	Liquid	Ether		4	3	3	3	3	3
Ethylene Glycol (antifreeze)	Liquid	Alcohol		1	1	1	1	1	4
Formaldehyde	Liquid	Aldehyde	37%	3	2	2	1	1	3
Formic Acid	Liquid	Acid (weak, organic)		2	2	2	1	1	4
Fresh Water	Liquid			1	1	1	1	1	1
Fuel Oil	Liquid	Aliphatic HC		4	1	1	1	1	3
Gasoline	Liquid	Aliphatic HC		4	1	1	2	2	2
Gear Oil (89w-140)	Liquid	Paraffin Oil		4	1	1	2	2	---
Glucose	Liquid	Sugar		1	1	1	1	1	1
Glycerin	Liquid	Alcohol		1	1	1	1	1	2
Heptane	Liquid	Aliphatic HC		4	1	2	2	2	2
Hexane	Liquid	Aliphatic HC		4	1	3	3	3	2
Hydraulic Fluid	Liquid	Aliphatic HC		4	1	2	2	2	4
Hydrazine	Liquid	Base (weak)		4	2	1	1	1	4
Hydrochloric Acid	Liquid	Acid (strong)	30%	2	4	4	2	2	4
Hydrofluoric Acid	Liquid	Acid (weak)	30%	4	4	4	4	4	4
Hydrogen Peroxide	Liquid			3	3	3	1	1	2

Iodine	Liquid	Inorganic Halogenated Compound	4	3	1	1	4
IRM 902	Liquid	Napathenic Oil	4	2	n/a	n/a	2
IRM 903	Liquid	Napathenic Oil	4	2	n/a	n/a	2
Jet Fuel	Liquid	Aromatic HC	4	1	3	3	3
Kerosene	Liquid	Aliphatic HC	4	1	3	3	2
Lacquers	Liquid	Aromatic HC (with alcohol)	4	4	4	4	4
Linoleic Acid	Liquid	Fatty Acid	4	2
Linseed Oil	Liquid	Fatty Acid	4	1	2	1	1
Methane	Liquid	Aliphatic HC	4	1	2	2	3
Methyl Alcohol (methanol)	Liquid	Alcohol	1	1	1	1	4
Methyl Ethyl Ketone (MEK)	Liquid	Ketone	4	4	4	4	4
Methyl Formate	Liquid	Alcohol	3	3	3	3	4
Methyl Isobutyl Ketone (MIBK)	Liquid	Ketone	4	4	4	4	4
Methyl Methacrylate	Liquid	Ester	4	4	1	1	4
Methylene Chloride	Liquid	Aliphatic HC (halogenated)	4	4	4	4	4
Mineral Oil	Liquid	Petroleum HC	4	1	3	3	1
Mineral Spirits	Liquid	Aliphatic HC	4	2	3	3	2
Motor Oil 10w-30 (natural)	Liquid	Paraffin Oil	4	2	2	2	2
Motor Oil 10w-30(synthetic)	Liquid	Paraffin Oil	4	2	2	2	2
Napathenic	Liquid	Aromatic HC	4	1	3
Naptha	Liquid	Aromatic HC	4	1	2	2	3
Nitric Acid	Liquid	Acid (strong)	4	4	4	4	4
Nitric Acid	Liquid	Acid (strong)	4	4	2	2	4
Nitrobenzene	Liquid	Aromatic HC	4	4	4	4	4
Octane	Liquid	Aliphatic HC	4	1	2	2	4
Oleic Acid	Liquid	Acid	4	2	3	3	2
Oxalic Acid	Liquid	Acid (weak)	2	2	2	2	3
Peanut Oil	Liquid	Fatty Acid	4	2	1	1	2
Pentane	Liquid	Aliphatic HC	4	1	2	2	4
Perchloroethylene	Liquid	Aliphatic HC (chlorinated)	4	2	3	3	4
Petroleum	Liquid	Aliphatic HC	4	1	2	2	2
Phosphoric Acid	Liquid	Acid (weak)	2	3	1	1	4
Pine Oil	Liquid	Turpene/Alcohol/Ether	4	3	4	4	2
Pine Oil	Liquid	20%+Pine-Sol	3	2	3	3	1
Potassium Hydroxide	Liquid	Base (strong)	2	2	1	1	3
Power Steering Fluid	Liquid	Napathenic Oil	4	2	2	2	...
Propane	Liquid	Aliphatic HC	4	1	1	1	2
Propyl Alcohol (propanol)	Liquid	Alcohol	1	1	2	2	4
Propylene Dichloride	Liquid	Aliphatic HC	4	4	4	4	4
Salt Water	Liquid	Aliphatic HC	1	1	1	1	1
Silicates	Solid	Alkali Metals	1	1	1	1	1
Silver Nitrate	Solid	Inorganic Salt	1	2	1	1	1
Sodium Bicarbonate	Solid	Inorganic Salt	1	1	1	1	1
Sodium Hydroxide	Liquid	Base (strong)	2	2	2	2	3
Sodium Hydroxide	Liquid	Base (strong)	1	1	1	1	1
Sodium Hypochlorite (bleach)	Liquid	Base	1	1	1	1	4
Stearic Acid	Liquid	Fatty Acid	3	1	2	2	1
Styrene	Liquid	Aromatic HC	4	4	4	4	3
Sulfuric Acid	Liquid	Acid (strong)	3	4	1	1	4
Sulfuric Acid	Liquid	Acid (strong)	4	4	4	4	4
Sulfuric Acid	Liquid	Acid (strong)	2	2	1	1	2
Tetrahydrofuran (THF)	Liquid	Ether	4	4	4	4	3
Toluene (methyl benzene)	Liquid	Aromatic HC	4	3	4	4	4
Transmission Fluid	Liquid	Napathenic or Paraffin Oil	4	1	2	2	1
Trinitrobenzene	Liquid	Aromatic HC	4	4	4	4	...
Turpentine	Liquid	Aliphatic HC	4	1	4	4	4
Vegetable Oil	Liquid	Aliphatic HC	4	1	1	1	1
Vinegar	Liquid	Acid (weak, organic)	3	1	1	1	3
Xylene	Liquid	Aromatic HC	4	4	4	4	4

LEGEND:

- 1 = Recommended
- 2 = Suitable for Use
- 3 = Useable, not recommended only.
- 4 = Not Recommended

Use of product in environments specified as "3" or "4" may lead to product failure and will void warranty.

These ratings are intended to be used as a guide only. For decisive results, please call for a free product sample for on-site testing in actual conditions.

Actual results may vary depending on concentration of chemicals. Ratings for products 470, 479, 782 refer to top surface.

NB: Under all circumstances regular cleaning is strongly recommended for hygienic/safety reasons and to reduce the effects of abrasion or aggressive industrial fluidson mats, thereby maintaining their effectiveness longer.

From dry to wet conditions, light to heavy duty, use this catalogue to choose the right Notrax® mat for the right application. It will contribute to increased productivity, employee satisfaction and fewer injuries.



© Superior Manufacturing Group - Europe B.V. 2014