

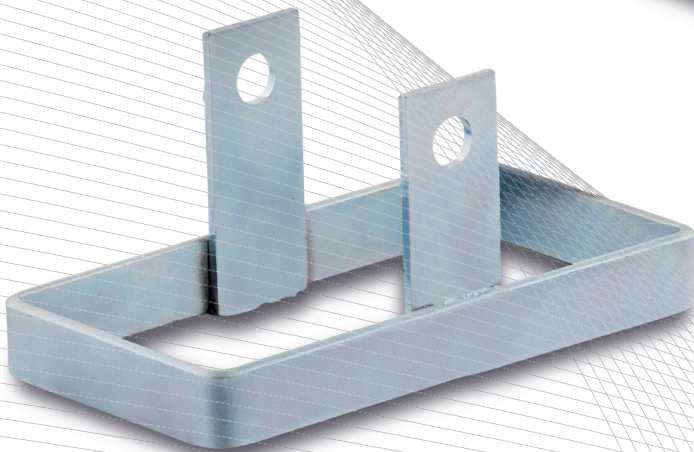
ACCESSORIES AND MOUNTING PRODUCTS



ACCESSORIES TYPE	end caps	axes axles axle guides	mounting thrust	ball bearing	fender wheels	foot protection
VERSION	inner with spring steel, which is clamped on the axle	round steel axle in \varnothing 20 mm, \varnothing 25 mm and axle guide as connector to the frame	steel screw-on bolt, plastic expander, round or square	consisting of two screw-on plates, with single-row or double-row ball bearing	various sizes are available	can be delivered as galvanized bracket around the entire roller or as an elastic rubber element
USAGE	for terminating the axles and for securing the wheel	for fastening the wheel sets	for fastening or bolt hole castors on round or square tubes	in furniture and industry for performing simple rotary movements	used in conjunction with bolt hole castors as edge or corner protection	screwed onto the wheel axles for crash protection
MATERIAL	plastic, steel, stainless steel	steel, malleable cast iron	steel, plastic	steel sheet, malleable cast iron	made of soft plastic core with a hard RAL 7038	flat steel sheath, version with coil spring, rubber foot protection
PAGES	436	436	437	439	440	440



ball bearing	adjusting collars	mounting plates
closed on one side (z/rs) or on both sides, (2rs/ZZ) one side protruding zv), stainless steel, resistant to high temperatures	adjusting collars with set screw	plate sizes 135 x 110 mm and 105 x 80 mm, various material thickness
for installation in wheels with ball bearing seats for easier running movement	axle attachment for up to 25 mm axles	adapter plate, height compensation or for welding as a mounting plate
steel, stainless steel	steel	steel
441	438	439



Accessories and mounting products

Torwegge offers a wide and versatile range of accessories. We provide mounting components, fastening parts and components related to occupational safety.

Our accessories and mounting products include:

- ☞ axles
- ☞ axle guides
- ☞ adjusting collars
- ☞ starlock caps
- ☞ thrust ball bearings
- ☞ deep-groove ball bearings
- ☞ various fastening pins and expanders
- ☞ foot protection components
- ☞ mounting plates
- ☞ and much more

Individual housings for castors and rollers are also available for order.

axle guides



Axle guides made of special malleable cast iron, for mounting wheel sets with round axles, painted axle guides

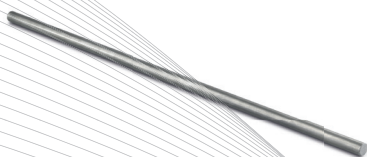


axle guides	axle hole \varnothing mm	plate size mm	axle center to support surface	hole spacing mm	hole \varnothing mm
H-950-20 Ident No.: 0016710	20	80 x 34	14	52	12
H-950-25 Ident No.: 0016711	25	92 x 40	22	64	12
H-950-30 Ident No.: 0016712	30	90 x 40	22	64	12

round bar steel axles

The axles are made from S235 JR bright steel.

All wheels having a corresponding hole can be mounted as wheel sets.



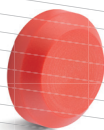
round bar steel axles	outer \varnothing mm	total length mm	axle material
A20X0500 Ident No.: 0033673	20	500	steel
A20X0800 Ident No.: 0014793	20	800	steel
A20X1000 Ident No.: 0014791	20	1,000	steel
A20X1200 Ident No.: 0014792	20	1,200	steel
A25X0910 Ident No.: 0014804	25	910	steel
A25X1000 Ident No.: 0014796	25	1,000	steel
A25X1100 Ident No.: 0014797	25	1,100	steel
A25X1200 Ident No.: 0014798	25	1,200	steel
A25X1300 Ident No.: 0014799	25	1,300	steel
A25X1,400 Ident No.: 0014800	25	1,400	steel

starlock caps

Starlock caps are end caps.

A steel spring mechanism is used to jam the cap on the axle; this prevents the wheel from coming off.

Starlock caps are also available in stainless steel or in a pure spring ring version. Please ask for product quantity details.



starlock caps	inner \varnothing mm	outer \varnothing mm	width mm	material
STARLOCKA20KU-ROT Ident No.: 0024199	20	42	12	plastic red
STARLOCKA20KU-SCHW Ident No.: 0024200	20	42	12	plastic black
STARLOCKA20 Ident No.: 0025128	20	38,3	20	chrome
STARLOCKA25 Ident No.: 0024201	25	43	13	chrome

bolt with perpendicular hole



bolts	bolt ø mm	bolt length mm	bolt thread	perpendicular hole vmm	thread cross-hole
BEF.AZ-R18 Ident No.: 0015232	18	45	M10	yes	M8
BEF.AZ-R19 Ident No.: 0015233	19	45	M10	yes	M8
BEF.AZ-R20 Ident No.: 0015234	20	45	M10	yes	M8
BEF.AZ-R21 Ident No.: 0015235	21	45	M10	yes	M8
BEF.AZ-R22 Ident No.: 0015236	22	45	M10	yes	M8
BEF.AZ-R23 Ident No.: 0015237	23	45	M10	yes	M8
BEF.AZ-R24 Ident No.: 0015238	24	45	M10	yes	M8
BEF.AZ-R25 Ident No.: 0015239	25	45	M10	yes	M8
BEF.AZ-R26 Ident No.: 0015240	26	45	M10	yes	M8
BEF.AZ-R27 Ident No.: 0015241	27	45	M10	yes	M8
BEF.AZ-R28 Ident No.: 0015242	28	45	M10	yes	M8
BEF.AZ-R29 Ident No.: 0015243	29	45	M10	yes	M8
ZAPFEN 20X50 INCL. SCHR. M12x30+FE Ident No.: 0017753	20	50	M12	no	
ZAPFEN 27X60 INCL. SCHR. M12X30+FE Ident No.: 0017754	27	60	M12	no	

accessories // expansion sleeve

round expansion sleeve



round expansion fastener, made from: polyamide expansion sleeve and socket head screw (m10x60mm)

expansion sleeve	expander dimensions mm	expander profile
BEF.4-R18-20-SET Ident No.: 0038251	18-20	round
BEF.4-R21-23-SET Ident No.: 0038252	21-23	round
T-BEF.R07-21.5-24 Ident No.: 0024280	21.5-24	round
BEF.4-R24-27-SET Ident No.: 0038253	24-27	round
BEF.4-R28-31-SET Ident No.: 0038214	28-31	round

square expansion sleeve

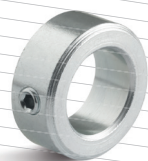


square expansion fastener, made from: polyamide expansion sleeve and socket head screw (m10x60mm)

expansion sleeve	expander dimensions mm	expander profile
BEF.4-V18-20-SET Ident No.: 0038379	18-20	square
BEF.4-V21-23-SET Ident No.: 0038215	21-23	square
BEF.4-V24-27-SET Ident No.: 0038216	24-27	square
BEF.4-V28-31-SET Ident No.: 0038380	28-31	square
BEF.4-V29.6 32.7 Ident No.: 0015213	29.6-32.7	square
BEF.4-V34.6-37-SET Ident No.: 0038293	34.6-37	square

accessories // adjusting collars

adjusting collars



the adjusting collars can be attached to the axle using a set screw

adjusting collars	inner ø mm	outer ø mm	width mm	material
A8-DIN705-black Ident No.: 0031541	8	16	8	steel S235 JR blank
A10-DIN705-black Ident No.: 0029097	10	20	10	steel S235 JR blank
A20 Ident No.: 0014790	20	32	14	steel S235 JR blank
A25 Ident No.: 0014795	25	40	16	steel S235 JR blank
A30 Ident No.: 0014805	30	45	16	steel S235 JR blank

thrust ball bearing

	plate length mm	plate width mm	screw hole spacing, length mm	screw hole spacing, width mm	hole ø mm	height mm	load-carrying capacity kg
197-057x057 Ident No.: 0011383	57	57	43	43	6.5	10.5	50
197-095x070 Ident No.: 0011384	95	70	75	45	6.5	19	280



thrust ball bearing, series 197

single ball bearing, galvanized



thrust ball bearing

	plate length mm	plate width mm	screw hole spacing, length mm	screw hole spacing, width mm	hole ø mm	height mm	load-carrying capacity kg
198-115x085 Ident No.: 0011387	115	85	80	55	9	19	250
198-138x109 Ident No.: 0011388	138	109	105	75	10.5	26	600



thrust ball bearing, series 198

two-row ball bearing, without center pin, with 3 mounting holes IGM12



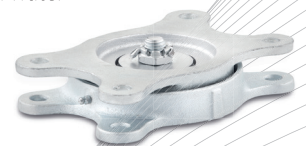
thrust ball bearing

	plate length mm	plate width mm	screw hole spacing, length mm	screw hole spacing, width mm	hole ø mm	height mm	load-carrying capacity kg
199-225X145 Ident No.: 0011389	225	145	185	105	12	43	1,500



thrust ball bearing, series 199

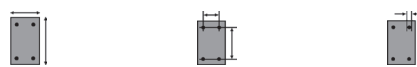
slewing ring made from malleable cast iron, Steel ball collar with protection against dust and splashed water



accessories // mounting plates

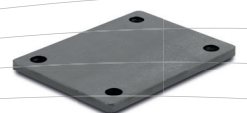
mounting plates

	plate size mm	hole spacing mm	hole ø mm	plate strength mm
Plate-105X80x5 Ident No.: 0033228	105 x 80	80 x 60	9	5
Plate-135X110x5 Ident No.: 0033229	135 x 110	105 x 80	11	5



mounting plates

made of S235JR+AR, bright steel



deflector rollers



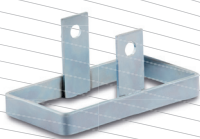
with hard plastic core and soft plastic coating, in RAL 7038 (grey)

can be used for: protecting the edges of furniture and beds



deflector rollers	wheel ø mm	wheel width mm	axle hole ø mm	hub length mm
ABR-060-10,6 Ident No.: 0014815	60	24	10,6	24
ABR-075-15.5 Ident No.: 0014817	75	23	15.5	23
ABR-100-10,6 Ident No.: 0014818	100	24	10,6	24
ABR-100-12.5 Ident No.: 0014819	100	24	12.5	24
ABR-100-15.5 Ident No.: 0014820	100	23	15.5	23
ABR-100-22.4 Ident No.: 0014821	100	20	22.4	20
ABR-100-25,4 Ident No.: 0014822	100	20	25.4	20
ABR-100-33,0 Ident No.: 0014823	100	20	33	20
ABR-125-10,6 Ident No.: 0014824	125	24	10,6	24
ABR-125-12.5 Ident No.: 0014825	125	24	12.5	24
ABR-150-22.4 Ident No.: 0014826	150	24	22.4	24
ABR-150-25,4 Ident No.: 0014827	150	24	25.4	24

foot protection



foot protection	wheel ø mm	wheel width mm	axle hole ø mm
Foot protection-125-IG Ident No.: 0038298	125	40	12.5
Foot protection-150-IG Ident No.: 0036004	150	50	12.5
Foot protection-160-IS Ident No.: 0029094	160	40	12
foot protection-160-IS-BOCK Ident No.: 0037778	160	40	12
foot protection-200-IM Ident No.: 0038529	200	50	12,3
foot protection-200-IM-BOCK Ident No.: 0038528	200	50	12,3
foot protection-IG-IH-200-GU Ident No.: 0081954	200	50	12.1
Foot protection-250-IG Ident No.: 0037634	250	60	12

ball bearing	outer ø mm	width mm	inner ø mm	ball bearing seal		
KULA-608ZZ-ABEC-3 Ident No.: 0014091	22	7	8	ZZ	<p>ZZ: double-sided disk cover plate with gap seal, for max. 150° C</p> <p>Z: single-sided disk cover plate</p> <p>2RS: double-sided closed disk cover plate, with rubber seal, for max. 120° C</p> <p>ZV: single-sided disk cover plate with gap seal and extended inner ring on one side, for max. 150° C</p>	
KULA-6001ZZ Ident No.: 0016114	28	8	12	ZZ		
KULA-6004-2RS Ident No.: 0017526	42	12	20	2RS		
KULA-6303-2RS Ident No.: 0036747	47	14	17	2RS		
KULA-6204ZZ Ident No.: 0017549	47	14	20	ZZ		
KULA-6204-2RS Ident No.: 0017545	47	14	20	2RS		
KULA-6005ZZ Ident No.: 0017532	47	12	25	ZZ		
KULA-6005-2RS Ident No.: 0017529	47	12	25	2RS		
KULA-6005ZV Ident No.: 0017531	47	12	25	ZV		
KULA-6006ZZ Ident No.: 0017533	55	13	30	ZZ		
KULA-6007-ZZ Ident No.: 0017534	62	14	35	ZZ		
NKULA-6000-2RS-NIRO Ident No.: 0032469	26	8	10	2RS		<p>conducting stainless steel</p>
NKULA-6001-2RS-NIRO Ident No.: 0019431	28	8	12	2RS		
NKULA-6002-2RS-NIRO Ident No.: 0014337	32	9	15	2RS		
NKULA-6201-2RS-NIRO Ident No.: 0028281	32	10	12	2RS		
NKULA-6202-2RS-NIRO Ident No.: 0019820	35	11	15	2RS		
NKULA-6303-2RS Ident No.: 0038716	47	14	17	2RS		
NKULA-6004-2RS-NIRO Ident No.: 0028282	42	12	20	2RS		
NKULA-6005-2RS-NIRO Ident No.: 0028192	47	12	25	2RS		
NKULA-6204-2RS-NIRO Ident No.: 0019821	47	14	20	2RS		
NKULA-6304-2RS-NIRO Ident No.: 0028280	52	15	20	2RS		
NKULA-6205-2RS-NIRO Ident No.: 0030816	52	15	25	2RS		
NKULA-6305-2RS-NIRO Ident No.: 0031607	62	17	25	2RS		

