



Description:

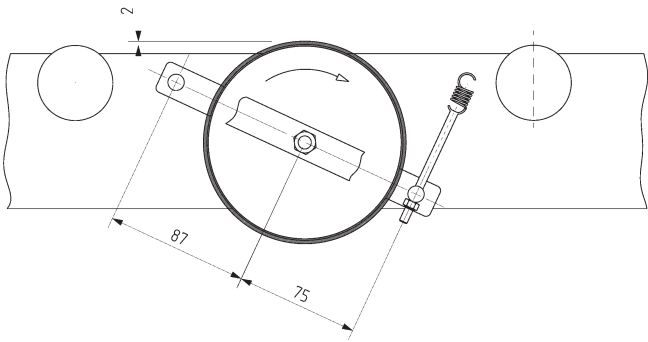
Braking rollers are built into the gravity-driven roller conveyor at regular intervals so that the conveyed goods maintain a constant speed. This can be done directly or indirectly. The selection and placement of brake rollers for your specific application depends on several factors.

A planetary (epicyclic) gear mechanism is built into the roller. Depending on the speed, this mechanism presses a centrifugal brake shoe against the inner side of the brake roller.

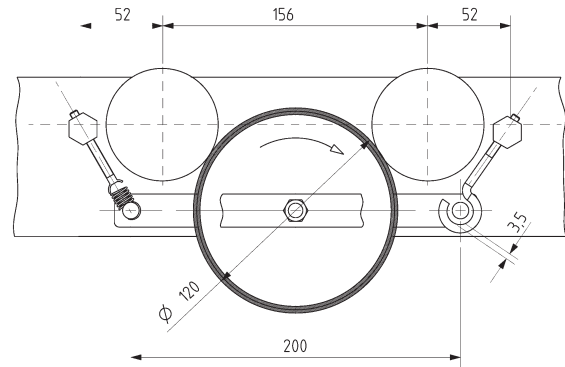
Our experience shows that one brake roller per load carrier should be added so that a constant conveying speed is maintained. When the brake rollers have been properly integrated, the conveying speed should be between 0.2 and 0.25 m/s. The conveying speed should not exceed 0.3 m/s. We recommend using flow tests on your application to determine the best gap between the brake rollers.

braking rollers	permissible pallet weight kg	braking	clip bolt
TBR 300 Ident No.: 0024654	300	direct, indirect	HS67, HS88
TBR 500 Ident No.: 0024655	500	direct, indirect	HS67, HS88
TBR 800 Ident No.: 0024657	800	direct, indirect	HS67, HS88
TBR 1,000 Ident No.: 0030268	1,000	direct, indirect	HS67, HS88
TBR 1200 Ident No.: 0024653	1,200	direct, indirect	HS67, HS88

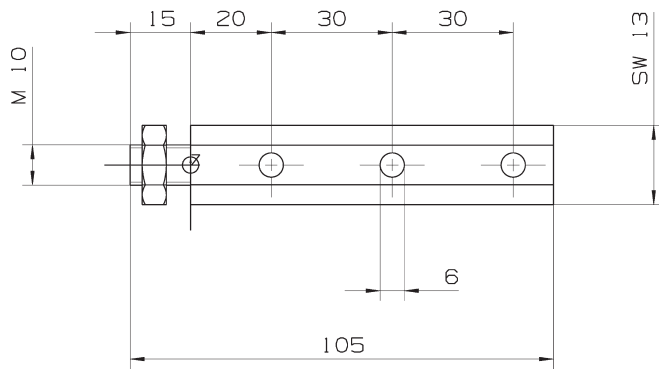
Direct braking



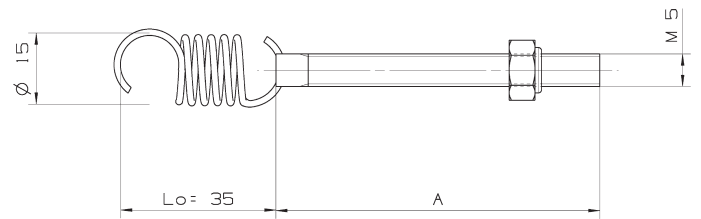
Indirect braking



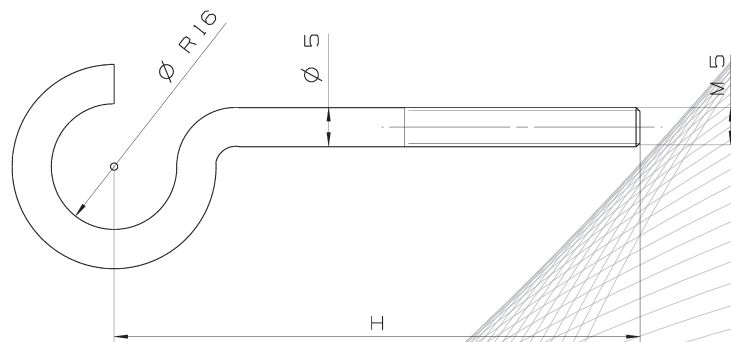
Suspension axle



Spring suspension



Clip bolt



brake carrier roller // up to 1,400 kg

Description:

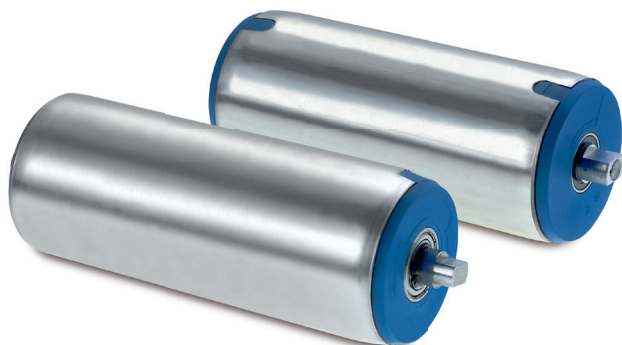
- permitted for weights range from 80 to 1,400 k
- brake carrier roller: Ø 80 mm
- can be used down to 0° C ambient temperature

Design of the support tube:

- bright steel or galvanized steel
- with rubber lining or 5 mm PVC tubing (when transporting steel or plastic plates)
- with knurled tube (when transporting plastic plates)

Available types of holding bracket:

- with rigid bracket: for braking in both directions
- with free-wheel bracket for use with push-in roller tracks: for braking in one direction



braking roller	material of tube	holder execution
TBTS80-124 Ident No.: 0040200	bright steel or galvanized steel	rigid bracket
TBTS 80 Ident No.: 0040201	bright steel or galvanized steel	rigid bracket



"We can also deliver customized lengths to match your requirements"

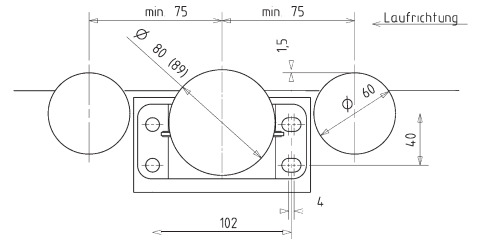
Special version:

- version for freezer usage: for temperatures down to -30° C (normal version can only be used to 0° C)

Standard lengths:

- 1,072 mm for transverse transport of EURO pallets
- 872 mm for lengthwise transport of EURO pallets
- 124 mm for pallet roller tracks (width version TBTS80-124)

Installation variant



Braking rollers

