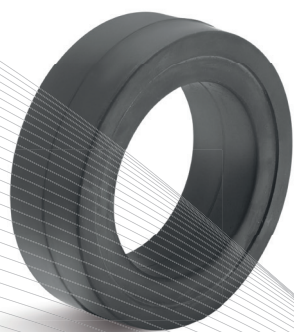
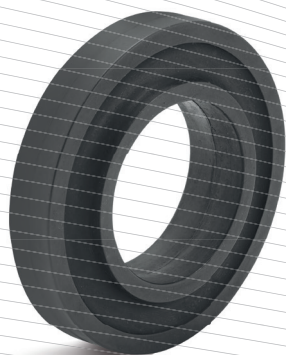




type A support rings	tube-Ø mm	outside-Ø mm	inside-Ø mm	width mm
ST-RING-63,5-108X25-A Ident No.: 0024162	63.5	108	60	25
ST-RING-63,5-133X25-A Ident No.: 0024164	63.5	133	60	25
ST-RING-89-133X30-A Ident No.: 0024166	89	133	85	30
ST-RING-89-159X30-A Ident No.: 0024169	89	159	85	30
ST-RING-89-180X35-A Ident No.: 0024171	89	180	105	35
ST-RING-108-159X35-A Ident No.: 0024159	108	159	105	35
ST-RING-108-180X40-A Ident No.: 0024161	108	180	105	40



type B support rings	tube-Ø mm	outside-Ø mm	inside-Ø mm	width mm
ST-RING-63,5-108X40-B Ident No.: 0024163	63.5	108	60	40
ST-RING-63,5-133X40-B Ident No.: 0024165	63.5	133	60	40
ST-RING-89-133X40-B Ident No.: 0024167	89	133	85	40
ST-RING-89-159X40-B Ident No.: 0024170	89	159	85	40
ST-RING-108-159X50-B Ident No.: 0024160	108	159	105	50



buffer rings	tube-Ø mm	outside-Ø mm	inside-Ø mm	width mm
PUF-RING-63,5-89X25 Ident No.: 0022744	63.5	89	60	25
PUF-RING-63,5-108X30 Ident No.: 0022740	63.5	108	60	30
PUF-RING-63,5-133X30 Ident No.: 0022742	63.5	133	60	30
PUF-RING-89-133X35 Ident No.: 0022745	89	133	85	35
PUF-RING-89-159X35 Ident No.: 0022748	89	159	85	35
PUF-RING-89-180X35 Ident No.: 0022749	89	180	85	35
PUF-RING-108-159X40 Ident No.: 0022733	108	159	105	40
PUF-RING-108-180X40 Ident No.: 0022734	108	180	105	40

flanges	tube-Ø mm	outside-Ø mm	flange version
SP50-70 Ident No.: 0023912	50	70	form A
SP60-110 Ident No.: 0023913	60	110	form B
SP80-150 Ident No.: 0023914	80	150	form B
SP89-150 Ident No.: 0023915	89	150	form B

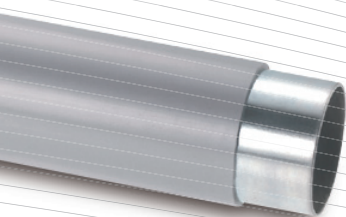


guiding disc	tube-Ø mm	outside-Ø mm	width mm	material thickness mm
BRS60-110 Ident No.: 0032437	60	110	14	2.5
BRS63,5-130 Ident No.: 0025831	63.5	130	14	2.5
BRS80-130 Ident No.: 0015500	80	130	14	2.5
BRS80-150 Ident No.: 0032438	80	150	14	2.5
BRS89-150 Ident No.: 0015501	89	150	14	2.5



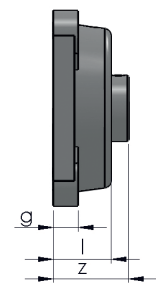
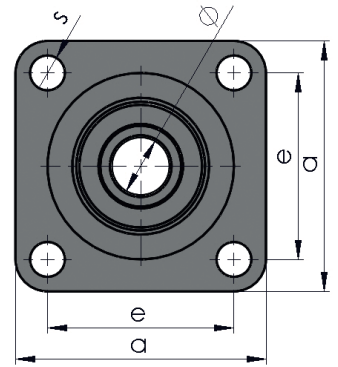


cover tubing	tube-Ø mm	material thickness mm	tubing material
COVER TUBING-30x2 Ident No.: 0027180	30	2	PVC approx. 63° shore A, RAL 7001, silver-grey
COVER TUBING-40x2 Ident No.: 0023763	40	2	PVC approx. 63° shore A, RAL 7001, silver-grey
COVER TUBING-50x2 Ident No.: 0023764	50	2	PVC approx. 63° shore A, RAL 7001, silver-grey
COVER TUBING-50x3 Ident No.: 0025699	50	3	PVC approx. 63° shore A, RAL 7001, silver-grey
COVER TUBING-50x5 Ident No.: 0039948	50	5	PVC approx. 63° shore A, RAL 7001, silver-grey
COVER TUBING-60x2 Ident No.: 0023765	60	2	PVC approx. 63° shore A, RAL 7001, silver-grey
COVER TUBING-60x3 Ident No.: 0025700	60	3	PVC approx. 63° shore A, RAL 7001, silver-grey
COVER TUBING-60x5 Ident No.: 0031856	60	5	PVC approx. 63° shore A, RAL 7001, silver-grey
COVER TUBING-80x2 Ident No.: 0023766	80	2	PVC approx. 63° shore A, RAL 7001, silver-grey
COVER TUBING-80x3 Ident No.: 0025701	80	3	PVC approx. 63° shore A, RAL 7001, silver-grey
COVER TUBING-80x5 Ident No.: 0034359	80	5	PVC approx. 63° shore A, RAL 7001, silver-grey
COVER TUBING-89x2 Ident No.: 0023767	89	2	PVC approx. 63° shore A, RAL 7001, silver-grey
COVER TUBING-89x3 Ident No.: 0027891	89	3	PVC approx. 63° shore A, RAL 7001, silver-grey
COVER TUBING-89x5 Ident No.: 0031855	89	5	PVC approx. 63° shore A, RAL 7001, silver-grey
COVER TUBING-108x3 Ident No.: 0031864	108	3	PVC approx. 63° shore A, RAL 7001, silver-grey
COVER TUBING-108x5 Ident No.: 0031837	108	5	PVC approx. 63° shore A, RAL 7001, silver-grey

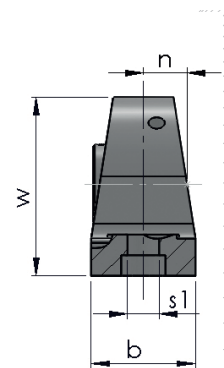
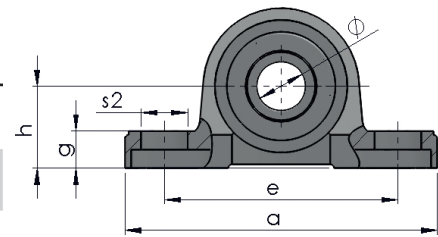


shrink tubing	tube-Ø mm	material thickness mm	tubing material
SHRINK TUBING-50 Ident No.: 0023770	50	1.5	PVC approx. 94° shore A, RAL 7001, silver-grey
SHRINK TUBING-60 Ident No.: 0023771	60	1.5	PVC approx. 94° shore A, RAL 7001, silver-grey
SHRINK TUBING-80 Ident No.: 0023895	80	1.5	PVC approx. 94° shore A, RAL 7001, silver-grey
SHRINK TUBING-89 Ident No.: 0023772	89	1.5	PVC approx. 94° shore A, RAL 7001, silver-grey

flange bearing	inside -Ø mm	a mm	e mm	i mm	l mm	s mm	z mm	g mm
UCF204 Ident No.: 0029027	20	86	64	15	25.5	12	33.3	12
UCF205 Ident No.: 0029028	25	95	70	16	27	12	35.7	14
UCF206 Ident No.: 0029029	30	108	83	18	31	12	40.2	14
UCF207 Ident No.: 0029030	35	117	92	19	34	14	44.4	16
UCF208 Ident No.: 0029031	40	130	102	21	36	16	51.2	16
UCF209 Ident No.: 0029032	45	137	105	22	38	16	52.2	18
UCF210 Ident No.: 0029033	50	143	111	22	40	16	54.6	18
UCF211 Ident No.: 0029034	55	162	130	25	43	19	58.4	20
UCF212 Ident No.: 0029035	60	175	143	29	48	19	68.7	20



pedestal bearing	inside -Ø mm	a mm	e mm	h mm	b mm	s1 mm	s2 mm	w mm	g mm
UCP204 Ident No.: 0029018	20	127	96	33.3	38	19	13	65	13
UCP205 Ident No.: 0029019	25	140	105	36.5	38	19	13	70	13
UCP206 Ident No.: 0029020	30	165	121	42.9	48	21	17	83	15
UCP207 Ident No.: 0029021	35	167	127	47.6	48	21	17	92	16
UCP208 Ident No.: 0029022	40	184	137	49.2	54	21	17	98	17
UCP209 Ident No.: 0029023	45	190	146	54	54	21	17	106	17
UCP210 Ident No.: 0029024	50	206	159	57.2	60	22	20	113	19
UCP211 Ident No.: 0029025	55	219	171	63.5	60	22	20	125	19
UCP212 Ident No.: 0029026	60	241	184	69.8	70	25	20	138	22





round belt wheels	axle-Ø mm	bearing surface-Ø mm	outside-Ø mm	width mm
ROUND BELT WHEEL-29X25,3 Ident No.: 0023651	25.3	29	48	30
ROUND BELT WHEEL-40,5x35,3 Ident No.: 0026928	35.3	40.5	60	32



toothed belt wheel	toothed belt type	length mm	width mm	number of teeth	pitch mm
Z-8MX288 Ident No.: 0017745	8M	288	11.2	36	64
Z-8MX352 Ident No.: 0017746	8M	352	11.2	44	96
Z-8MX416 Ident No.: 0017747	8M	416	11.2	52	128
Z-8MX480 Ident No.: 0017748	8M	480	11.2	60	160
Z-8MX544 Ident No.: 0017749	8M	544	11.2	68	192
Z-8MX608 Ident No.: 0017750	8M	608	11.2	76	224
Z-8MX640 Ident No.: 0017751	8M	640	11.2	80	240