






ROLLER TRACKS



SERIES	single rollers	roller rails	universal roller tracks	colli roller tracks	pallet roller tracks
LOAD CAPACITY	2 kg - 200 kg per roller	6 kg - 40 kg per roller	2 kg - 80 kg per roller	40 kg - 150 kg per roller	160 kg per roller
DIAMETER	13 mm - 120 mm	13 mm - 32 mm	48 mm - 54 mm	50 mm - 54 mm	50 mm - 54 mm
MATERIALS	plastic, steel, polyurethane and more	steel, plastic, rubber	polyurethane, plastic, rubber, steel brush	steel, polyamide, plastic	steel, PVC
BEARINGS	plain bearing, ball bearings	plain bearing, ball bearings	plain bearing, ball bearings	plain bearing, ball bearings	ball bearings, plain bearing
STARTING FROM PAGE	610	618	630	636	640

				
extended pallet roller tracks	heavy-duty roller tracks	multi-transfer tracks	multi-directional roller tracks	ball transfer tracks
160 kg per roller	700 kg - 1,000 kg per roller	200 kg - 350 kg per roller	5 kg - 60 kg per roller	60 kg - 160 kg per ball transfer
60 mm - 64 mm	47 mm - 82 mm	38 mm - 42 mm	40 mm - 120 mm	15 mm - 22 mm
steel, PVC	steel, polyamide, polyurethane	steel	plastic, polyurethane	steel, nylon
ball bearings, plain bearings	ball bearings, plain bearings	ball bearings, plain bearings	plain bearing	ball ring
646	648	650	654	660



"Suitable castors can be found from page 662"



+49 800 9341700

Give us a call for more advice on planning your personal facility.



Versatile conveyor rollers

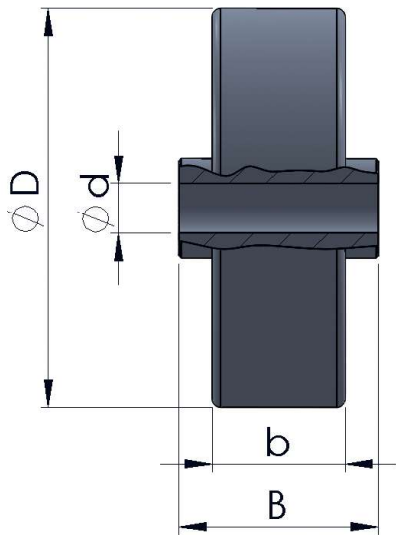
Our versatile conveyor rollers can be used for a wide variety of transportation solutions. Conveyor rollers are mainly used in wheel conveyors, roller tracks and live storage shelving. Our standard product line includes conveyor rollers with diameters ranging from 28 to 120 mm. They are manufactured from various materials and have a load capacity of up to 200 kg per conveyor roller.

Versions

- galvanized or bright steel
- plastic
- PU coating
- rubber coated or PVC tubing

Areas of use

- conveyor systems
- machine construction
- assembly areas
- material supply and discharge
- and much more



Conveyor rollers

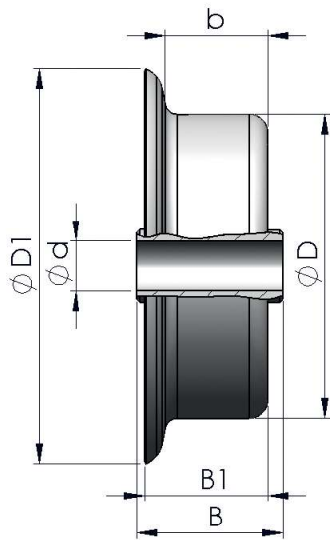
Conveyor rollers are mainly used in roller conveyors, roller tracks and live storage shelving. Conveyor rollers variants are made from steel or plastic, from normal or flanged rollers, and with ball bearings or plain bearing.

We also have rollers with polyurethane tread, rubber coating or PVC tubing in our product line for applications where sensitive goods are being conveyed.

conveyor rollers	D mm	d mm	b mm	B mm	roller material	color	bearing	load-carrying capacity kg
2200-28-6 Ident No.: 0011525	28	6	12	24	steel galvanized	galvanized	ball bearing	10
2200-48-6 Ident No.: 0011527	48	6	16	24	steel galvanized	galvanized	ball bearing	20
2200-48-8 Ident No.: 0011528	48	8	16	24	steel galvanized	galvanized	ball bearing	20
2200-48-6-POM Ident No.: 0027508	48	6	16	24	steel galvanized	galvanized	POM balls	15
2200-48-8-POM Ident No.: 0027509	48	8	16	24	steel galvanized	galvanized	POM balls	15
2200-50-8 Ident No.: 0011529	50	8	63	68	steel galvanized	galvanized	ball bearing	40
2300-48-6 Ident No.: 0011531	48	6	16	24	plastic	blue	ball bearing	10
2300-48-8 Ident No.: 0011532	48	8	16	24	plastic	blue	ball bearing	10
2300-48-6-NIRO Ident No.: 0011533	48	6	16	24	plastic	blue	stainless steel balls	10
2300-48-8-NIRO Ident No.: 0027541	48	8	16	24	plastic	blue	stainless steel balls	10
2300-54-8-GU Ident No.: 0011536	54	8	19	24	plastic with rubber coating	blue-grey	ball bearing	15
2400-48-8-YELLOW Ident No.: 0011543	48	8	17	23.5	plastic with PU-coating	yellow	plain bearing	40
2400-48-8k-YELLOW Ident No.: 0028452	48	8	17	23.5	plastic with PU-coating	yellow	ball bearing	40
PAA-050-18-21-G08 Ident No.: 0016659	50	8	18	22	polyamide	black	plain bearing	50
2300-50-8-BRUSHES Ident No.: 0011534	50	8	20	23	plastic with brushes	black-grey	plain bearing	2

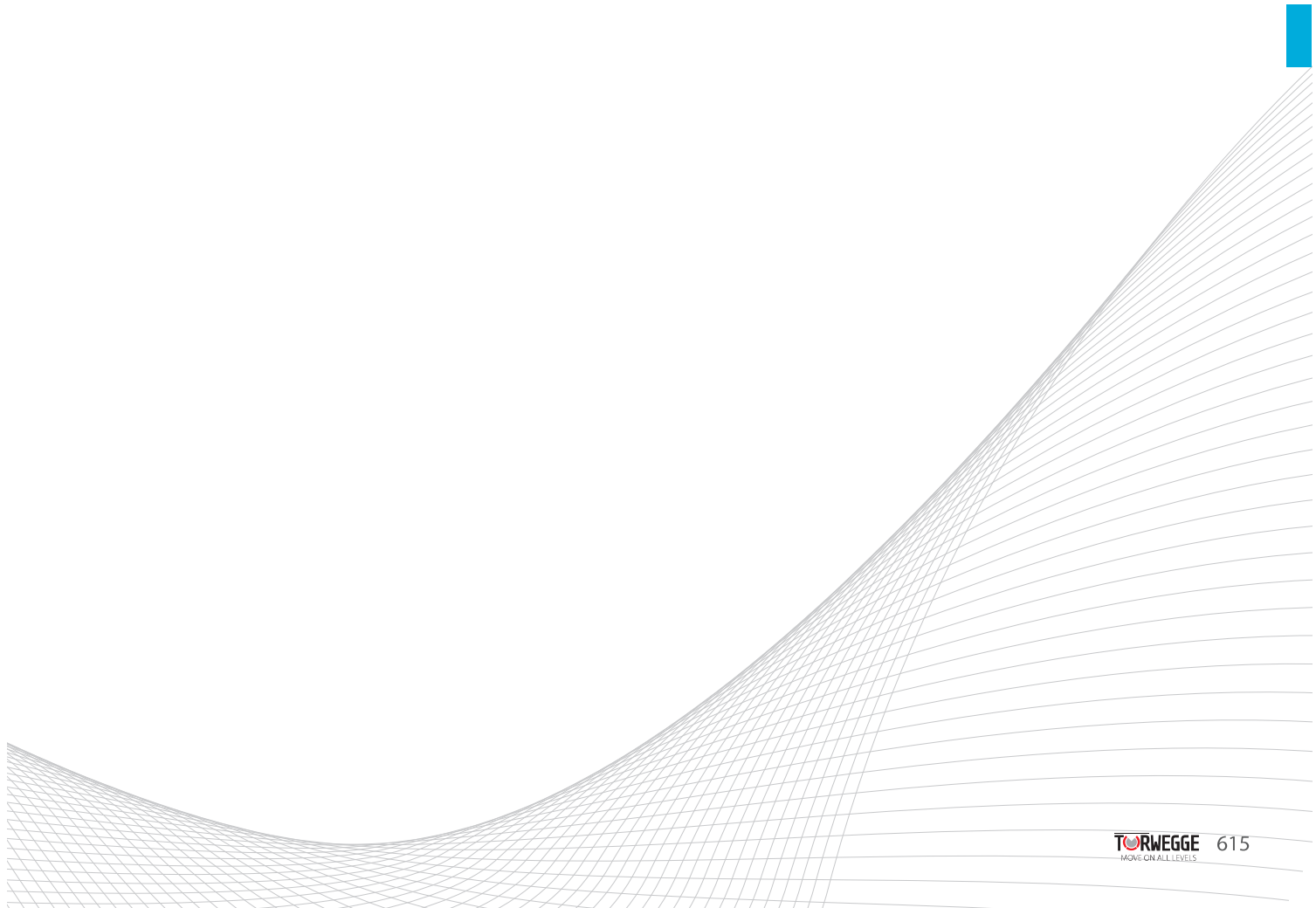
conveyor rollers	D mm	d mm	b mm	B mm	roller material	color	bearing	load-carrying capacity kg
NR40 Ident No.: 0022369	54	8	48	51	plastic flanged rollers	blue	ball bearings	40
NR50 Ident No.: 0017225	54	8	48	52	polyamide	white	ball bearings	150
NR70 Ident No.: 0016651	54	8	48	50.5	plastic	black	plain bearing	60
NR80 Ident No.: 0026926	50	8	48	52	steel galvanized	galvanized	ball bearings	160
NR100-50-8 Ident No.: 0022349	50	8	68	74	steel galvanized	galvanized	ball bearings	160
NR110-50-8PVC2MM Ident No.: 0022792	54	8	68	74	steel roller with covering tube PVC	silver-grey	ball bearings	160
NR200-60-10 Ident No.: 0022360	60	10	118	124	steel galvanized	galvanized	ball bearings	160
NR210-60-10PVC2mm Ident No.: 0024322	64	10	118	124	steel roller with covering tube PVC	silver-grey	ball bearings	160
HEAVY-DUTY-ROLLER-38 Ident No.: 0038267	38	10	146	146	steel blank	silver	deep-groove ball bearing	200
HEAVY-DUTY ROLLER-42 Ident No.: 0038304	42	10	100	100	steel blank	silver	deep-groove ball bearing	200
HEAVY-DUTY ROLLER 42-STI Ident No.: 0038592	42	10	100	100	steel galvanized	galvanized	deep-groove ball bearing	200

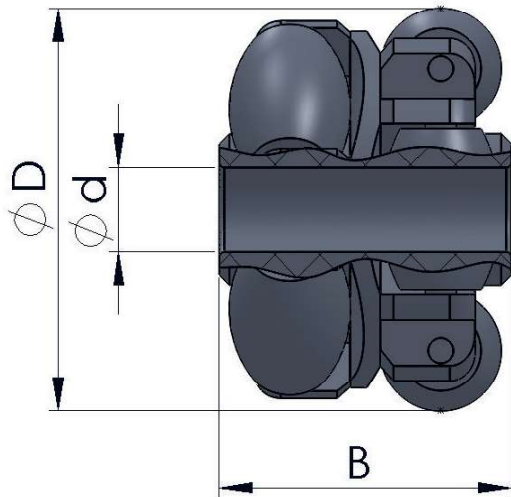
conveyor rollers // up to 160 kg



conveyor rollers with flange	D mm	D1 mm	d mm	B mm	B1 mm	b mm	roller material	color	bearing	load-carrying capacity kg
2460-6 Ident No.: 0011550	50	76	6	33.50	31.50	25	steel galvanized	galvanized	ball bearings	10
2460-8 Ident No.: 0011551	50	76	8	33.50	31.50	25	steel galvanized	galvanized	ball bearings	15
2450-8 Ident No.: 0011549	50	65	8	24	20	16	steel galvanized	galvanized	ball bearings	15
2470-M8 Ident No.: 0011552	50	76	8	46	40	39	steel galvanized	galvanized	ball bearings	40
2350-6KU Ident No.: 0011539	48	66	6	24	18.50	16	plastic	blue	ball bearings	10
2350-8KU Ident No.: 0011541	48	66	8	24	18.50	16	plastic	blue	ball bearings	10
2350-6KU-NIRO Ident No.: 0011540	48	66	6	24	18.50	16	plastic	blue	stainless steel bearing	10
2350-8KU-NIRO Ident No.: 0011542	48	66	8	24	18.50	16	plastic	blue	stainless steel bearing	10
SR40 Ident No.: 0023991	54	70	8	51	47.50	43	2 steel rollers coated in plastic	blue	ball bearings	40
SR80 Ident No.: 0026927	50	72	8	53	49	45	steel galvanized	galvanized	ball bearings	160
SR100-50-8 Ident No.: 0023985	50	72	8	75	71.50	66	steel galvanized	galvanized	ball bearings	160

conveyor rollers // up to 160 kg





Multi-directional rollers, type AWR

- barrel rollers made from polyamide, with stainless steel axles
- the roller wheels have ribs
- there are six offset barrel rollers between the ribs
- we also offer a soft (polyurethane) version of our AWR rollers when moving sensitive goods

We recommend installing the multi-directional rollers in the main conveying direction so that the rolling resistance is slightly greater in the secondary conveying direction.

Be sure to conduct extensive testing before implementation.

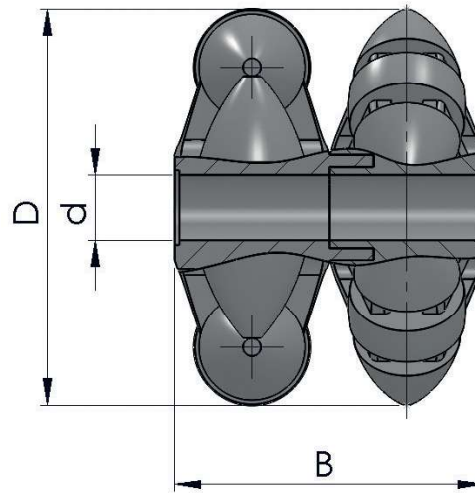
roller	D mm	d mm	B mm	roller material	color	bearing	load-carrying capacity kg
AWR40 Ident No.: 0015025	40	8.4	29	polyamide	red	plain bearing	10
AWR40PUR Ident No.: 0015027	40	8.4	29	polyurethane	green	plain bearing	10
AWR48 Ident No.: 0015028	48	8.4	39	polyamide	grey	plain bearing	15
AWR60 Ident No.: 0015030	60	8.4	48	polyamide	grey	plain bearing	20
AWR60PUR Ident No.: 0015032	60	8.4	48	polyurethane	green	plain bearing	20
AWR80 Ident No.: 0034751	80	8.4	64	polyamide	black	plain bearing	40
AWR80PUR Ident No.: 0034752	80	8.4	64	polyurethane	purple	plain bearing	40
AWR120 Ident No.: 0015023	120	12.4	90	polyamide	grey	plain bearing	60
AWR120PUR Ident No.: 0026925	120	12.4	90	polyurethane	green	plain bearing	60

Multi-directional rollers, type ASR:

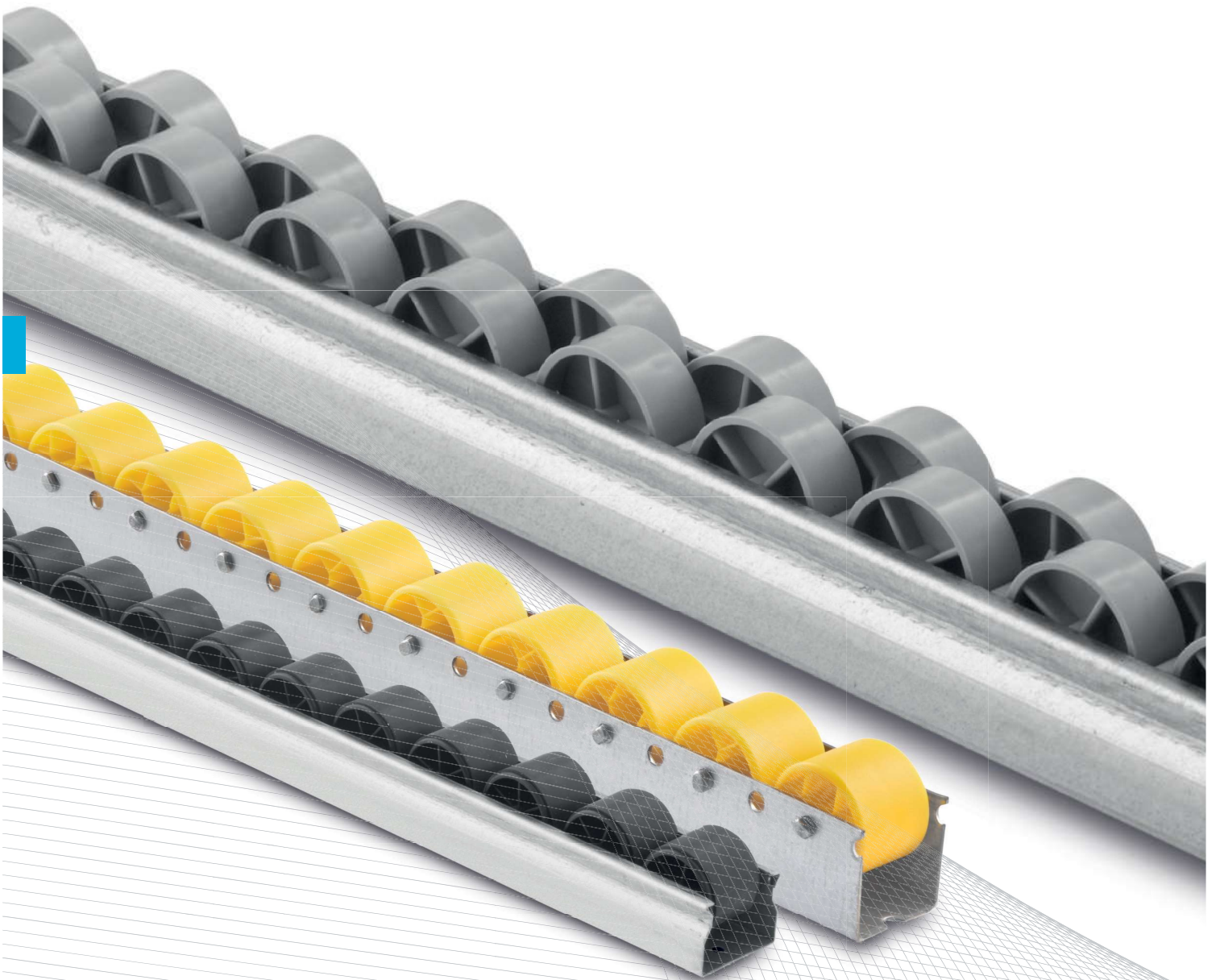
- polyamide rollers
- single roller equipped with 4 barrel rollers
- double roller equipped with 8 barrel rollers in offset arrangement
- we also offer a soft (polyurethane) version of our ASR 60 rollers when moving sensitive goods

We recommend installing the multi-directional rollers in the main conveying direction so that the rolling resistance is slightly greater in the secondary conveying direction.

Be sure to conduct extensive testing before implementation.



roller	D mm	d mm	B mm	roller material	color	bearing	load-carrying capacity kg
ASR10 Ident No.: 0014873	50	8.2	19	plastic	white-black	plain bearing	5
ASR50 Ident No.: 0014957	50	8.2	40	plastic	white-black	plain bearing	10
ASR60 Ident No.: 0014958	60	8.2	53	plastic	white-black	plain bearing	20
ASR60-SOFT Ident No.: 0014959	60	8.2	53	polyurethane	white-black	plain bearing	20
ASR80 Ident No.: 0014960	80	8.2	60	plastic	white-black	plain bearing	40



Versatile roller rails

The slim design and small size of our versatile roller rails make them the perfect solution for conveying lightweight goods such as cardboard boxes, light picking containing or storage containers.

Versions

- 🌀 plastic plain rollers
- 🌀 plastic flanged rollers
- 🌀 steel rollers

Model variants

- 🌀 axle and sectional profile in stainless steel
- 🌀 stainless steel axle
- 🌀 highly conductive plastic rollers
- 🌀 heat-resistant steel rollers
- 🌀 plastic rollers with rubber press-on binding
- 🌀 plastic rollers with stainless steel press-on binding

Areas of use

- 🌀 packaging and picking tables
- 🌀 wheel conveyors and carpets for interlinking two work stations
- 🌀 assembly aids
(e.g. for use in the wood and window manufacturing industries)
- 🌀 guide rails for conveying systems
- 🌀 and much more



roller rails // up to 6 kg per roller



Roller rails normal/mini

Rollers:

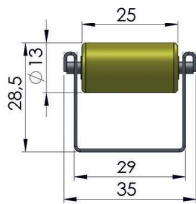
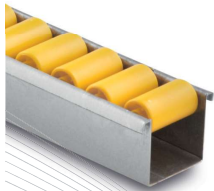
- made of high-quality thermoplastic (PP polypropylene), resistant to impact and fracturing
- available as standard (... N) or with flanged rollers (... SP)
- can be used from -30° C to +100° C

Profile:

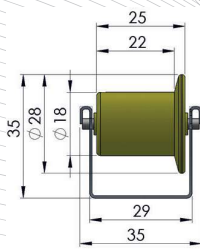
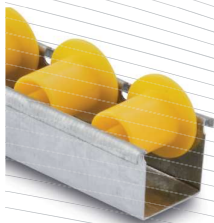
- formed from galvanized sheet steel
- our roller rails are manufactured to match your required lengths and pitches, max. lengths 6,000 mm

Bearing:

- small rollers mounted on the steel axles ensure the high load capacity of 6 kg and provide for a very low friction coefficient



series RU-N-mini	pitch mm	roller material	bearing	load capacity/roller kg
RU-16N-MINI Ident No.: 0023595	16	polypropylene	plain bearing	6
RU-33N-MINI Ident No.: 0023601	33	polypropylene	plain bearing	6
RU-50N-MINI Ident No.: 0023621	50	polypropylene	plain bearing	6



series RU-SP-mini	pitch mm	roller material	bearing	load capacity/roller kg
RU-33SP-MINI Ident No.: 0023618	33	polypropylene	plain bearing	6
RU-50SP-MINI Ident No.: 0023628	50	polypropylene	plain bearing	6
RU-66SP-MINI Ident No.: 0023636	66	polypropylene	plain bearing	6

Variants of the standard/mini roller rail:

- axle and profile in stainless steel (...-VA)
- only the axle in stainless steel (...-AE)
- small rollers in black and highly conductive (...-NDU and ...-NHL)

The specified roller pitches (00, 16, 33, 50, 66, 83) are only approximated. The exact hole pitch is 16.667 mm +/- 0.1 mm.

A defined initial roller gap is available at extra cost if required; please specify when ordering.

When ordering, ask for the desired track type (type and pitch of rollers) along with your required length.

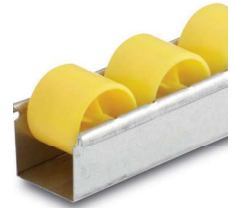
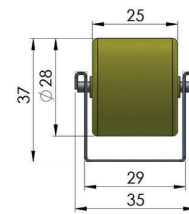
Order example: RU-16N-Mini/2x1,500

The conveyed goods must rest on at least three rollers in order to ensure that they are conveyed smoothly and do not tip over. The distance or pitch between the axles refers to the distance between the center points of adjacent rollers.

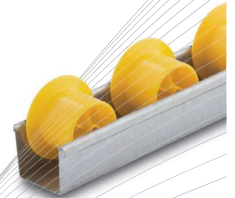
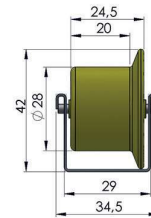


"The RU-16N-Mini and RU-33N are available in 2m and 3m lengths directly from stock"

series RU-N	pitch mm	roller material	bearing	load capacity/roller kg
RU-33N Ident No.: 0023600	33	polypropylene	plain bearing	6
RU-50N Ident No.: 0023620	50	polypropylene	plain bearing	6
RU-66N Ident No.: 0023632	66	polypropylene	plain bearing	6
RU-83N Ident No.: 0023639	83	polypropylene	plain bearing	6
RU-100N Ident No.: 0023588	100	polypropylene	plain bearing	6

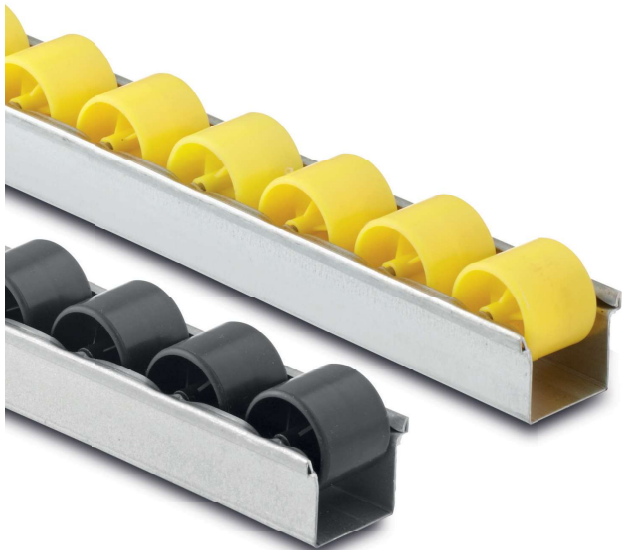


series RU-SP	pitch mm	roller material	bearing	load capacity/roller kg
RU-50SP Ident No.: 0023627	50	polypropylene	plain bearing	6
RU-66SP Ident No.: 0023635	66	polypropylene	plain bearing	6
RU-83SP Ident No.: 0023643	83	polypropylene	plain bearing	6
RU-100SP Ident No.: 0023592	100	polypropylene	plain bearing	6



Suitable castors can be found on page 662

roller rails // up to 6 kg per roller

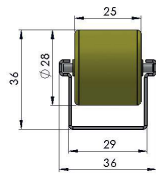
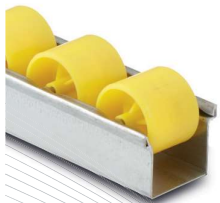


Autofix roller rail

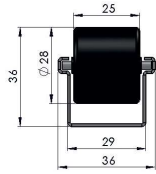
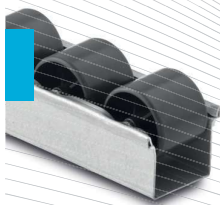
The Autofix roller rails are compatible with the standards roller rails. Our fully automated manufacturing process enables us to respond to your requirements – so that we can cost-effectively produce just the right amount for your application.

The Autofix roller rails are available only with standard rollers, in pitches 33 mm and 50 mm.

The minimum order quantity is 250 pieces per length (min. length is 700 mm, max. length is 5,000 mm).



series RU-AN	pitch mm	roller material	bearing	load capacity/roller kg
RU-33AN Ident No.: 0028184	33	polypropylene	plain bearing	6
RU-50AN Ident No.: 0040436	50	polypropylene	plain bearing	6



series RU-ANDU	pitch mm	roller material	bearing	load capacity/roller kg
RU-33ANDU Ident No.: 0040435	33	polypropylene	plain bearing	6
RU-50ANDU Ident No.: 0040437	50	polypropylene	plain bearing	6

Roller rails Superfix

Rollers:

- made of high-quality thermoplastic (PP polypropylene), resistant to impact and fracturing
- available as standard (... N) or with flanged rollers (... SP)
- can be used from -30° C to +100° C

Bearing:

- the roller are mounted on steel axles which ensure a high load capacity of 12 kg

Profile:

- made of galvanized steel profile with a thickness of 1.5 mm
- manufactured according to your required length and pitch; max. length is 6,000 mm

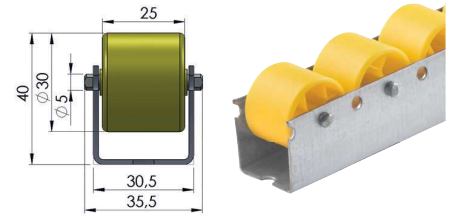
The specified roller partitioning (00, 16, 33, 50, 66, 83) are only approximate values. The exact hole pitch is 16.667 mm +/- 0.1 mm.

A defined initial roller gap is available at extra cost if required; please specify when ordering. When ordering, please indicate your desired rail/track type (roller type and pitch) along with your desired length.

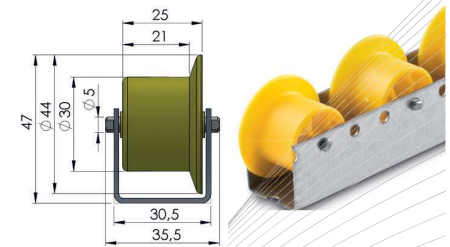
Order example: SF-33N/2x1,500

The conveyed goods must rest on at least three rollers in order to ensure that they are conveyed smoothly and do not tip over. The distance or pitch between the axles refers to the distance between the centre points of adjacent rollers.

series SF-N	pitch mm	roller material	bearing	load capacity/roller kg
SF-33N Ident No.: 0023847	33	polypropylene	plain bearing	12
SF-50N Ident No.: 0023848	50	polypropylene	plain bearing	12
SF-66N Ident No.: 0023850	66	polypropylene	plain bearing	12
SF-100N Ident No.: 0023845	100	polypropylene	plain bearing	12



series SF-SP	pitch mm	roller material	bearing	load capacity/roller kg
SF-50SP Ident No.: 0023849	50	polypropylene	plain bearing	12
SF-66SP Ident No.: 0023851	66	polypropylene	plain bearing	12
SF-100SP Ident No.: 0023846	100	polypropylene	plain bearing	12



“The SF-33N is available in 2m and 3m lengths directly from stock”

Suitable castors can be found on page 663

roller rails // up to 15 kg per roller



Roller rails XL

Rollers:

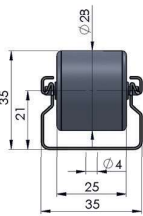
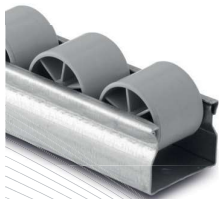
- made of polypropylene-PP)
- available in grey, yellow, black and blue
- can be used from -30° C to +100° C
- highly conductive rollers: -20° to + 40° C

Bearing:

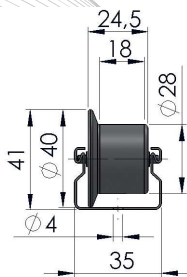
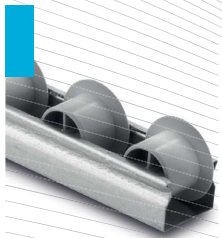
- small rollers mounted on the steel axles ensure the high load capacity of 40 kg and provide for a very low friction coefficient

Profile:

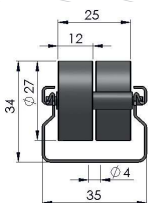
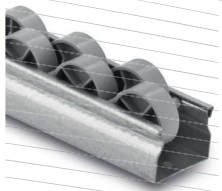
- galvanized steel sheet: 0.8 mm thick
- the roller rails are manufactured individually to match your required length and pitch. They are available in lengths up to 4,500 mm.



series RU-N-XL	pitch mm	roller material	bearing	load capacity/roller kg
RU-33NGR-XL Ident No.: 0038016	33	polypropylene	plain bearing	15
RU-50NGR-XL Ident No.: 0040492	50	polypropylene	plain bearing	15
RU-66NGR-XL Ident No.: 0040493	66	polypropylene	plain bearing	15



series RU-SP-XL	pitch mm	roller material	bearing	load capacity/roller kg
RU-50SPGR-XL Ident No.: 0038601	50	polypropylene	plain bearing	15
RU-66SPGR-XL Ident No.: 0040494	66	polypropylene	plain bearing	15
RU-83SPGR-XL Ident No.: 0040495	83	polypropylene	plain bearing	15



series RU-N-XL	pitch mm	roller material	bearing	load capacity/roller kg
RU-16,5NGR-XL Ident No.: 0038017	16.5	polypropylene	plain bearing	15



“Optimal roller transport for KLT-type containers and for small boxes: with maximum roller contact”

Variants of the XL roller rail:

- axis and profile in stainless steel (...-AV)
- small rollers in black and highly conductive (...-NDU and ...-NHL)

When ordering, please indicate your desired rail/track type (roller type and pitch) along with your desired length.

Order example: RU-50-VA-XL/2x1,500

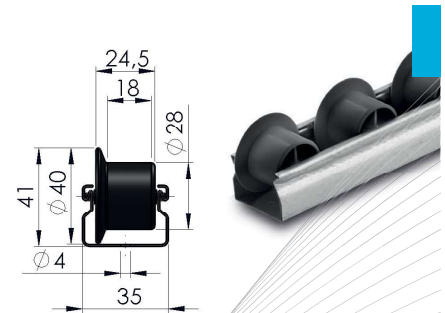
The conveyed goods must rest on at least three rollers in order to ensure that they are conveyed smoothly and do not tip over. The axle gap (or pitch) indicates the distance from the middle of one roller to the middle of the next roller, in the direction of conveying.



series RU-HL-XL	pitch mm	roller material	bearing	load capacity/roller kg
RU-33HL-XL Ident No.: 0037962	33	polypropylene	plain bearing	15
RU-50HL-XL Ident No.: 0037997	50	polypropylene	plain bearing	15
RU-66HL-XL Ident No.: 0038003	66	polypropylene	plain bearing	15

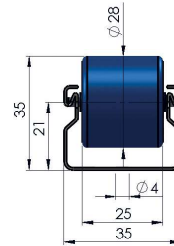


series RU-SPHL-XL	pitch mm	roller material	bearing	load capacity/roller kg
RU-50SPHL-XL Ident No.: 0038602	50	polypropylene	plain bearing	15
RU-66SPHL-XL Ident No.: 0040640	66	polypropylene	plain bearing	15
RU-83SPHL-XL Ident No.: 0040641	83	polypropylene	plain bearing	15



Suitable castors can be found on page 663

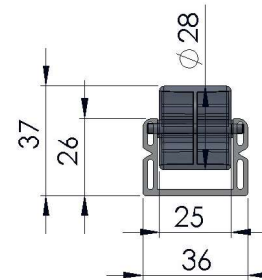
Roller rails for freezer applications down to -30° C



Advantages:

- polyethylene rollers can be used for cold applications because they do not break when struck
- increased resistance to twisting and bending
- vertical load capacity of up to 40 kg for each roller under a horizontal load

Roller rail, germ-free



Advantages:

- roller made from non-colored polypropylene
- U-profile made of extruded, white plastic with no added coloring
- stainless steel axle
- for use in sterile rooms with rolling transport of conveyed goods to a sterile environment
- vertical load capacity of up to 15 kg for each roller under a horizontal-positioned load

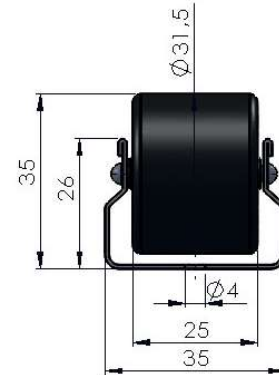


**"Germ-free components:
suitable for direct contact with food"**

High-load roller rails



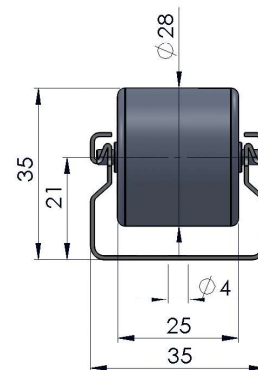
Reinforced sheet and rollers enable more than 100 kg of vertical load capacity per roller under a horizontal-positioned load.



Roller rail with stainless steel press-on binding



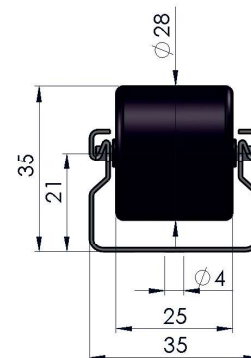
The rust-free press-on binding on the roller prevents the conveyed goods from being contaminated with rust. It also increases the wear resistance of the plastic rollers, thus increasing the overall service life.



Roller rail with rubber press-on binding



The rubber press-on binding reduces the noise created by gravity-driven roller conveyors (e.g. when carrying metal boxes with noisy contents). Please note that a slight slowing of the gravity-driven conveyed goods may occur.



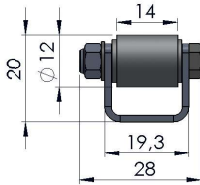
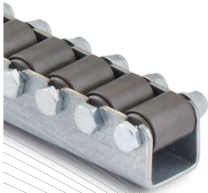
Mini heavy-duty roller rails

Rollers:

- steel rollers, light-running
- can be used in temperature range from - 40° C to +100° C (or without oil lubrication up to 250° C)

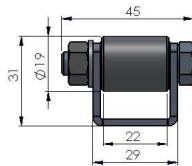
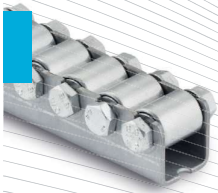
Bearing:

- ball bearing rollers
- load capacity per roller (Ø 12 x 16 mm): 30 kg (RU-13ST)
- load capacity per roller (Ø 19 x 24 mm): 40 kg (RU-20ST)



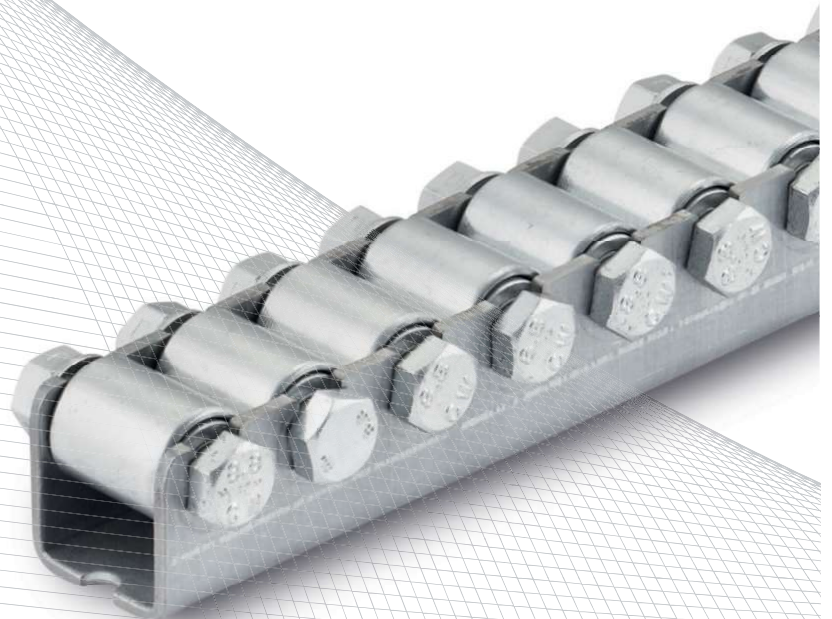
series RU-ST
RU-13ST Ident No.: 0036924

pitch mm	roller material	bearing	load capacity/roller kg
13	steel	ball bearings	30



series RU-ST
RU-20ST Ident No.: 0033318

pitch mm	roller material	bearing	load capacity/roller kg
20	steel	ball bearings	40



Profile:

- galvanized plate
- RU-13ST: 18 x 19.3 x 18 x 1.5 mm max. 2,000 mm
- RU-20ST: 28.5 x 29.3 x 28.5 x 2.5 mm max. 2,980 mm
- mounting holes: Ø 6.2 mm, pitch: 100 mm

Axle center of the first roller is offset 6 mm from profile edge (RU-13ST). Axle center of the first roller is offset 10 mm from profile edge (RU-20ST).

Our roller rails are manufactured individually in the length and pitch of your choice.

When ordering, please specify the desired track type (type of roller and pitch) and your desired length.

Order example: RU-13ST/2x1,500

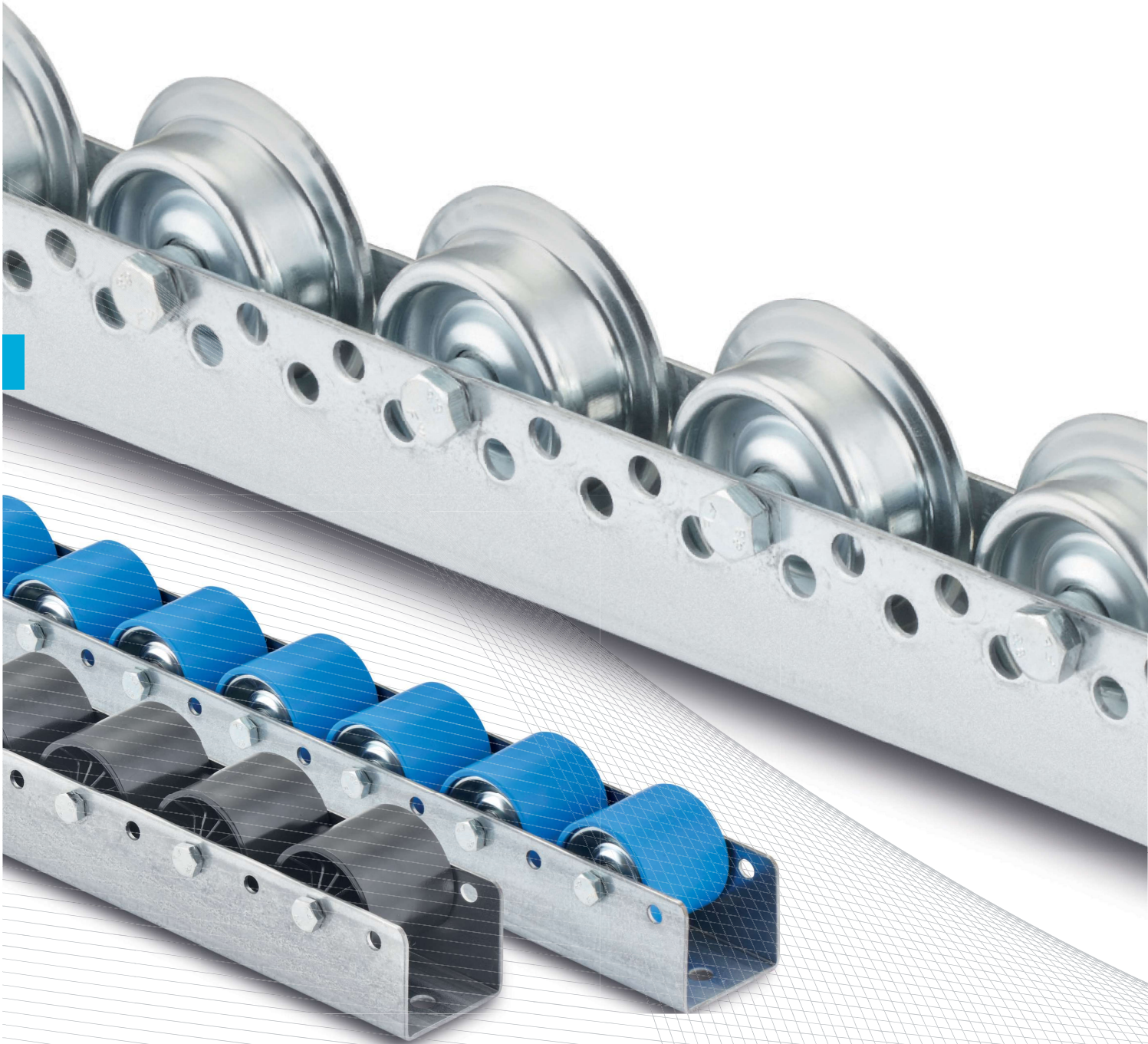
The conveyed goods must rest on at least three rollers in order to ensure that they are conveyed smoothly and do not tip over. The distance or pitch between the axles refers to the distance between the center points of adjacent rollers.



“The extremely low profile height and very narrow roller pitch provide excellent transport of heavy goods”

TORWEGGE

MOVE ON ALL LEVELS



Variable all-purpose and colli roller tracks

Our wide variety of variable all-purpose and colli roller tracks can be used in many ways on different rollers. They are a perfect solution to conveying light and medium-weight goods.

Versions

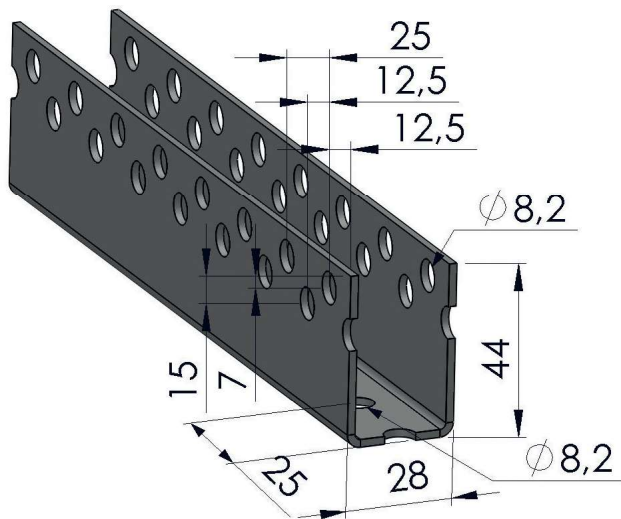
- rollers with or without flange
- rollers with plain or ball bearings
- rollers made from various materials
- brush rollers

Areas of use

- live storage shelving
- glass and wood-working industries
- mounting rails for conveying systems
- automotive industry
- guide rails
- packaging machines
- and much more



all-purpose roller tracks // up to 10 kg per roller



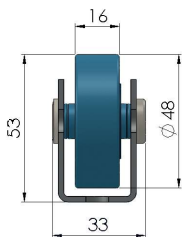
All-purpose roller tracks

Rollers:

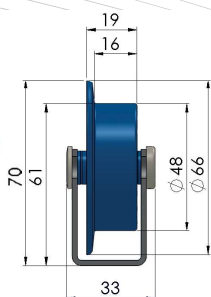
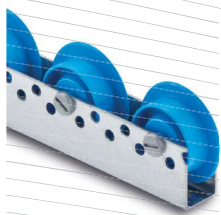
- steel, plastic and polyurethane rollers: with standard or flanged roller, Ø 48 to Ø 54 mm (flanged up to Ø 66 mm)
- with ball or plain bearing
- load capacity: 2 – 80 kg/roller

Profile:

- made of galvanized steel sheet, S = 2 mm
- the profile section has a bearing length of 6,000 mm
- our all-purpose roller tracks are manufactured to match your required lengths and pitches



series US-NR10	installation height, lower row of holes mm	installation height, upper row of holes mm	pitch mm	roller material	bearing	load capacity / roller kg
US-NR10-050 Ident No.: 0026377	53	61	50	plastic	ball bearings	10
US-NR10-075 Ident No.: 0026379	53	61	75	plastic	ball bearings	10
US-NR10-100 Ident No.: 0026366	53	61	100	plastic	ball bearings	10
US-NR10-125 Ident No.: 0026368	53	61	125	plastic	ball bearings	10
US-NR10-150 Ident No.: 0026370	53	61	150	plastic	ball bearings	10
US-NR10-175 Ident No.: 0026372	53	61	175	plastic	ball bearings	10
US-NR10-200 Ident No.: 0026374	53	61	200	plastic	ball bearings	10



series US-SR10	installation height, upper row of holes mm	pitch mm	roller material	bearing	load capacity / roller kg
US-SR10-075 Ident No.: 0026433	70	75	plastic	ball bearing	10
US-SR10-100 Ident No.: 0026423	70	100	plastic	ball bearings	10
US-SR10-125 Ident No.: 0026425	70	125	plastic	ball bearings	10
US-SR10-150 Ident No.: 0026427	70	150	plastic	ball bearings	10
US-SR10-175 Ident No.: 0026429	70	175	plastic	ball bearings	10
US-SR10-200 Ident No.: 0026431	70	200	plastic	ball bearings	10

all-purpose roller tracks // up to 40 kg per roller

Installation:

- standard rollers, unless otherwise specified, are mounted in the lower row of holes. Flanged rollers and rollers with thermoplastic rubber press-on bindings are always mounted in the top row of holes
- middle of first roller is set 25 mm from the profile edge the track end runs all the way out
- a defined initial roller gap is available at extra cost if required; please specify when ordering

When ordering, please specify the desired track type (type of roller and pitch), the desired length and the screw connection:

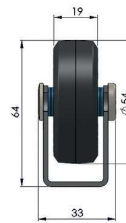
Order example: US-NR05-050/VS26/2x1,500

The conveyed goods must rest on at least three rollers in order to ensure that they are conveyed smoothly and do not tip over. The distance or pitch between the axles refers to the distance between the center points of adjacent rollers.

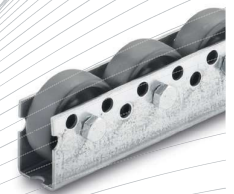
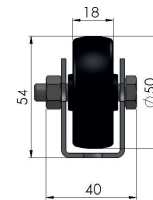
Screwed connection:

- with special screws with plastic caps (VS26) or with steel screw (M8)

series US-NR15	installation height, upper row of holes mm	pitch mm	roller material	bearing	load capacity / roller kg
US-NR15-075 Ident No.: 0026387	64	75	thermoplastic rubber coating	ball bearings	10
US-NR15-100 Ident No.: 0026381	64	100	thermoplastic rubber coating	ball bearings	10
US-NR15-125 Ident No.: 0026382	64	125	thermoplastic rubber coating	ball bearings	10
US-NR15-150 Ident No.: 0026383	64	150	thermoplastic rubber coating	ball bearings	10
US-NR15-175 Ident No.: 0026384	64	175	thermoplastic rubber coating	ball bearings	10
US-NR15-200 Ident No.: 0026385	64	200	thermoplastic rubber coating	ball bearings	10

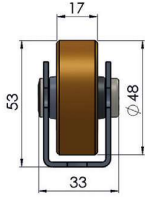


series US-NR07	installation height, lower row of holes mm	installation height, upper row of holes mm	pitch mm	roller material	bearing	load capacity / roller kg
US-NR07-050 Ident No.: 0019004	54	62	50	polyamide	plain bearing	40
US-NR07-075 Ident No.: 0019003	54	62	75	polyamide	plain bearing	40
US-NR07-100 Ident No.: 0026935	54	62	100	polyamide	plain bearing	40
US-NR07-125 Ident No.: 0026936	54	62	125	polyamide	plain bearing	40
US-NR07-150 Ident No.: 0026937	54	62	150	polyamide	plain bearing	40
US-NR07-175 Ident No.: 0026938	54	62	175	polyamide	plain bearing	40
US-NR07-200 Ident No.: 0026939	54	62	200	polyamide	plain bearing	40

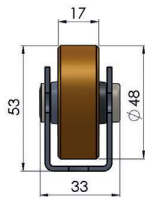


Suitable castors can be found on page 664

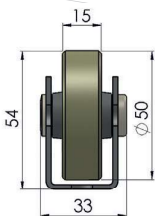
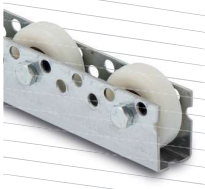
all-purpose roller tracks // up to 80 kg per roller



series US-NR05	installation height, lower row of holes mm	installation height, upper row of holes mm	pitch mm	roller material	bearing	load capacity / roller kg
US-NR05-050 Ident No.: 0026351	53	61	50	plastic rollers with polyurethane coating	plain bearing	40
US-NR05-075 Ident No.: 0026353	53	61	75	plastic rollers with polyurethane coating	plain bearing	40
US-NR05-100 Ident No.: 0026346	53	61	100	plastic rollers with polyurethane coating	plain bearing	40
US-NR05-125 Ident No.: 0026347	53	61	125	plastic rollers with polyurethane coating	plain bearing	40
US-NR05-150 Ident No.: 0026348	53	61	150	plastic rollers with polyurethane coating	plain bearing	40
US-NR05-175 Ident No.: 0026349	53	61	175	plastic rollers with polyurethane coating	plain bearing	40
US-NR05-200 Ident No.: 0026350	53	61	200	plastic rollers with polyurethane coating	plain bearing	40



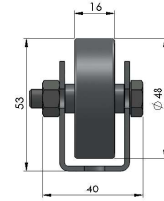
series US-NR08	installation height, lower row of holes mm	installation height, upper row of holes mm	pitch mm	roller material	bearing	load capacity / roller kg
US-NR08-050 Ident No.: 0029168	53	61	50	plastic rollers with polyurethane coating	ball bearings	40
US-NR08-075 Ident No.: 0029169	53	61	75	plastic rollers with polyurethane coating	ball bearings	40
US-NR08-100 Ident No.: 0029170	53	61	100	plastic rollers with polyurethane coating	ball bearings	40
US-NR08-125 Ident No.: 0029171	53	61	125	plastic rollers with polyurethane coating	ball bearings	40
US-NR08-150 Ident No.: 0029172	53	61	150	plastic rollers with polyurethane coating	ball bearings	40
US-NR08-175 Ident No.: 0029173	53	61	175	plastic rollers with polyurethane coating	ball bearings	40
US-NR08-200 Ident No.: 0029174	53	61	200	plastic rollers with polyurethane coating	ball bearings	40



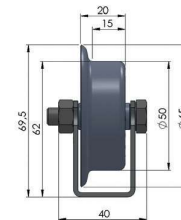
series US-NR04	installation height, lower row of holes mm	installation height, upper row of holes mm	pitch mm	roller material	bearing	load capacity / roller kg
US-NR04-075 Ident No.: 0030267	54	62	75	polyurethane	ball bearings	80
US-NR04-100 Ident No.: 0027875	54	62	100	polyurethane	ball bearings	80
US-NR04-125 Ident No.: 0040439	54	62	125	polyurethane	ball bearings	80
US-NR04-150 Ident No.: 0040440	54	62	150	polyurethane	ball bearings	80

all-purpose roller tracks // up to 20 kg per roller

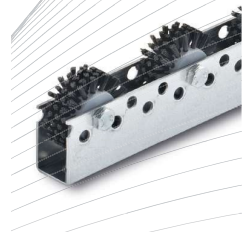
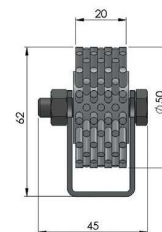
series US-NR20	installation height, lower row of holes mm	installation height, upper row of holes mm	pitch mm	roller material	bearing	load capacity / roller kg
US-NR20-050 Ident No.: 0026400	53	61	50	steel	ball bearings	20
US-NR20-075 Ident No.: 0026402	53	61	75	steel	ball bearings	20
US-NR20-100 Ident No.: 0026389	53	61	100	steel	ball bearings	20
US-NR20-125 Ident No.: 0026392	53	61	125	steel	ball bearings	20
US-NR20-150 Ident No.: 0026394	53	61	150	steel	ball bearings	20
US-NR20-175 Ident No.: 0026396	53	61	175	steel	ball bearings	20
US-NR20-200 Ident No.: 0026398	53	61	200	steel	ball bearings	20



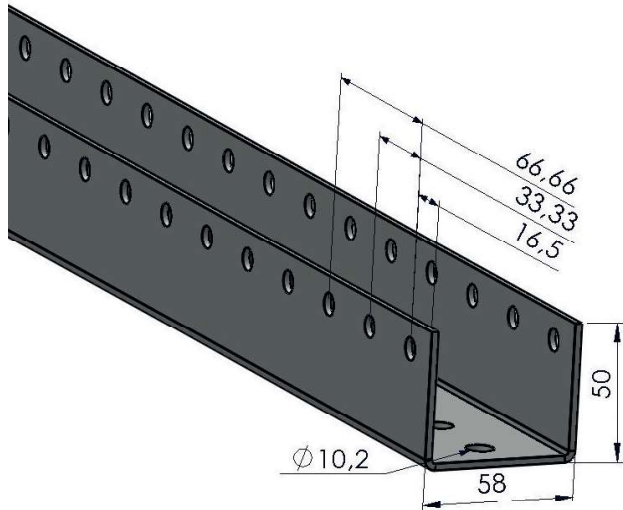
series US-SR20	installation height, upper row of holes mm	pitch mm	roller material	bearing	load capacity / roller kg
US-SR20-075 Ident No.: 0026457	69.5	75	steel	ball bearings	15
US-SR20-100 Ident No.: 0026435	69.5	100	steel	ball bearings	15
US-SR20-125 Ident No.: 0026437	69.5	125	steel	ball bearings	15
US-SR20-150 Ident No.: 0026439	69.5	150	steel	ball bearings	15
US-SR20-175 Ident No.: 0026441	69.5	175	steel	ball bearings	15
US-SR20-200 Ident No.: 0026443	69.5	200	steel	ball bearings	15



series US-NR30	installation height, upper row of holes mm	pitch mm	roller material	bearing	load capacity / roller kg
US-NR30-075 Ident No.: 0026409	62	75	plastic	plain bearing	2
US-NR30-100 Ident No.: 0026403	62	100	plastic	plain bearing	2
US-NR30-125 Ident No.: 0026404	62	125	plastic	plain bearing	2
US-NR30-150 Ident No.: 0026405	62	150	plastic	plain bearing	2
US-NR30-175 Ident No.: 0026406	62	175	plastic	plain bearing	2
US-NR30-200 Ident No.: 0026407	62	200	plastic	plain bearing	2



Suitable castors can be found on page 664



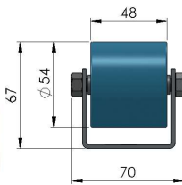
Colli roller tracks

Rollers:

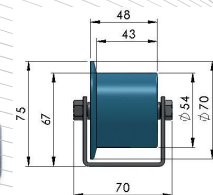
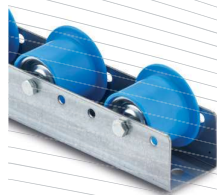
- steel and plastic rollers: in standard version or flanged roller, Ø 50 mm and Ø 54 mm
- with ball or plain bearing
- load capacity: 40 – 150 kg/roller

Profile:

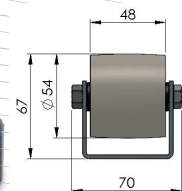
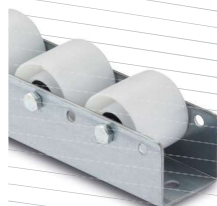
- made of galvanized steel sheet, S = 2.5 mm
- the profile section has a bearing length of 6,000 mm
- our colli roller tracks are manufactured to match your required lengths and pitches



series US-NR40	pitch mm	roller material	bearing	load capacity / roller kg
US-NR40-066 Ident No.: 0026419	66	plastic flanged rollers	ball bearing	40
US-NR40-100 Ident No.: 0026410	100	plastic flanged rollers	ball bearing	40
US-NR40-133 Ident No.: 0026413	133	plastic flanged rollers	ball bearing	40
US-NR40-166 Ident No.: 0026415	166	plastic flanged rollers	ball bearing	40
US-NR40-200 Ident No.: 0026417	200	plastic flanged rollers	ball bearing	40



series US-SR40	pitch mm	roller material	bearing	load capacity / roller kg
US-SR40-100 Ident No.: 0026445	100	plastic flanged rollers	ball bearing	40
US-SR40-133 Ident No.: 0026446	133	plastic flanged rollers	ball bearing	40
US-SR40-166 Ident No.: 0026447	166	plastic flanged rollers	ball bearing	40
US-SR40-200 Ident No.: 0026448	200	plastic flanged rollers	ball bearing	40



series US-NR50	pitch mm	roller material	bearing	load capacity / roller kg
US-NR50-066 Ident No.: 0026420	66	polyamide	deep-groove ball bearing	150
US-NR50-100 Ident No.: 0026411	100	polyamide	deep-groove ball bearing	150
US-NR50-133 Ident No.: 0026414	133	polyamide	deep-groove ball bearing	150
US-NR50-166 Ident No.: 0026416	166	polyamide	deep-groove ball bearing	150
US-NR50-200 Ident No.: 0026418	200	polyamide	deep-groove ball bearing	150

Installation:

- middle of first roller is set 50 mm from the profile edge
It runs to the end of the track (with hole pitch of 33.33 mm)
- a defined initial roller gap is available at extra cost if required; please specify when ordering

Screwed connection:

- with steel screw (M8)

When ordering, please specify the desired track type (type of roller and pitch), the desired length and the screw connection:

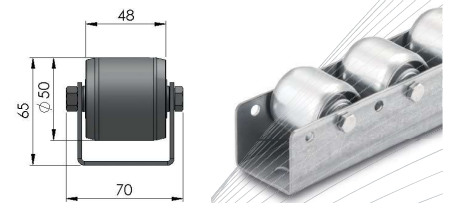
Order example: US-NR80-066/2x1,500

The conveyed goods must rest on at least three rollers in order to ensure that they are conveyed smoothly and do not tip over. The distance or pitch between the axles refers to the distance between the center points of adjacent rollers.

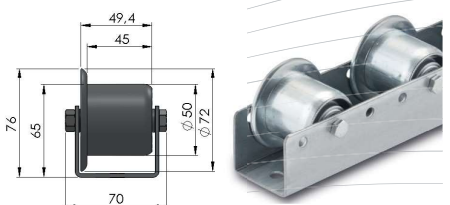
series US-NR70	pitch mm	roller material	bearing	load capacity / roller kg
US-NR70-066 Ident No.: 0027333	66	polyamide	plain bearing	60
US-NR70-100 Ident No.: 0027334	100	polyamide	plain bearing	60
US-NR70-133 Ident No.: 0027335	133	polyamide	plain bearing	60
US-NR70-166 Ident No.: 0027336	166	polyamide	plain bearing	60
US-NR70-200 Ident No.: 0027337	200	polyamide	plain bearing	60



series US-NR80	pitch mm	roller material	bearing	load capacity / roller kg
US-NR80-066 Ident No.: 0027324	66	steel	ball bearing	120
US-NR80-100 Ident No.: 0027325	100	steel	ball bearing	120
US-NR80-133 Ident No.: 0027326	133	steel	ball bearing	120
US-NR80-166 Ident No.: 0027327	166	steel	ball bearing	120
US-NR80-200 Ident No.: 0027328	200	steel	ball bearing	120



series US-SR80	pitch mm	roller material	bearing	load capacity / roller kg
US-SR80-100 Ident No.: 0027329	100	steel	ball bearing	120
US-SR80-133 Ident No.: 0027330	133	steel	ball bearing	120
US-SR80-166 Ident No.: 0027331	166	steel	ball bearing	120
US-SR80-200 Ident No.: 0027332	200	steel	ball bearing	120



Suitable castors can be found on page 664

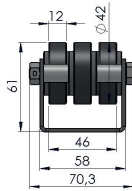
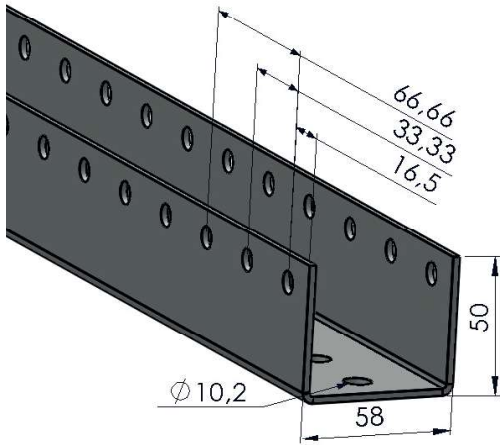
Colli roller tracks series US-NR-6004

Rollers:

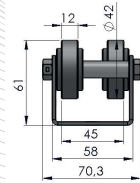
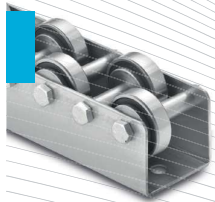
- steel and plastic rollers: in standard version or flanged roller, Ø 50 mm and Ø 54 mm
- with ball or plain bearing
- load capacity: 40 – 150 kg/roller

Profile:

- made of galvanized steel sheet, S = 2.5 mm
- the profile section has a bearing length of 6,000 mm
- our colli roller tracks are manufactured to match your required lengths and pitches



series US-NR-6004	pitch mm	roller material	bearing	load capacity / roller kg
US-NR-6004-2RS-33-TYPE1 Ident No.: 0034111	33.3	steel blank	deep-groove ball bearing	500



series US-NR-6004	pitch mm	roller material	bearing	load capacity / roller kg
US-NR-6004-2RS-33-TYPE2 Ident No.: 0039595	33.3	steel blank	deep-groove ball bearing	500



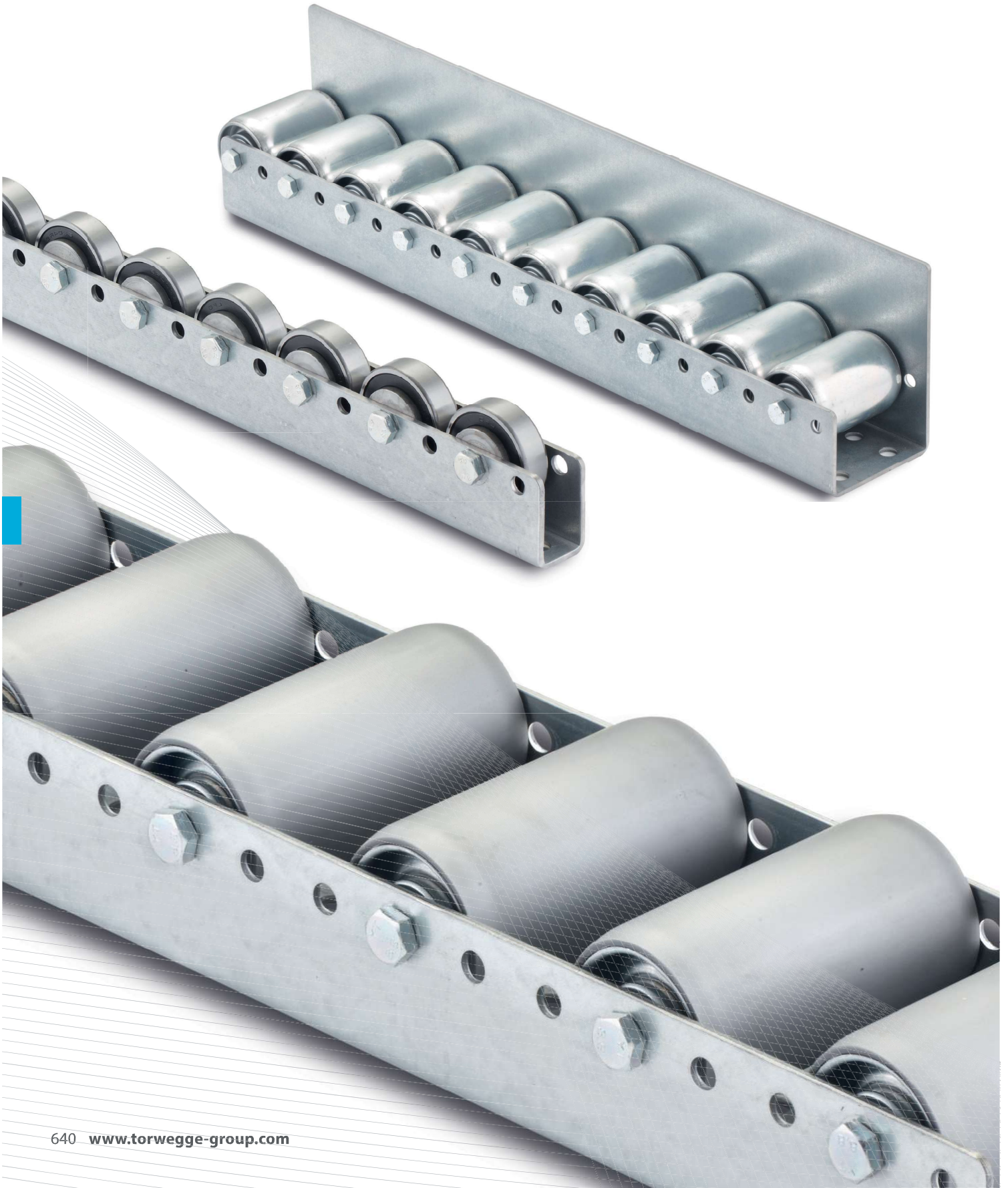
colli roller tracks // up to 500 kg per roller



"Our new product, with 6004-2RS ball bearings, for your demanding applications"



Suitable castors can be found on page 664



Sturdy pallet and heavy-duty roller tracks

Because of their stable construction and strong rollers, our sturdy pallet/heavy-duty roller tracks are the ideal solution for conveying heavy goods (EURO pallets, industrial pallets, lattice crates, etc.).

Versions

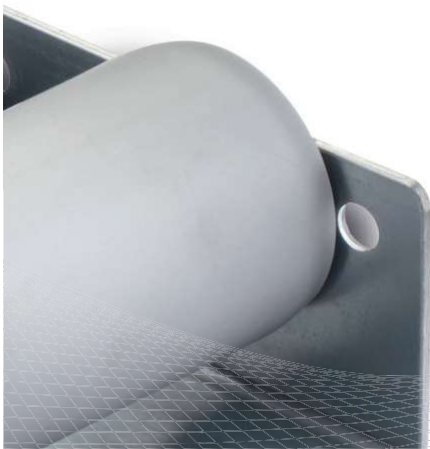
- 🔹 steel rollers: 50 and 60 mm diameters
- 🔹 deep-groove ball bearing 6204-2RS
- 🔹 polyamide and polyurethane rollers
- 🔹 steel rollers with PVC cover tubing
- 🔹 profile raised on one side

Model variants

- 🔹 sturdy start-up rollers, made from ball bearings or with special coatings
- 🔹 base frame
- 🔹 end stops
- 🔹 and much more

Areas of use

- 🔹 storage strategies (FIFO, LIFO)
- 🔹 live storage shelving
- 🔹 flowing storage
- 🔹 conveyor lines
- 🔹 connecting multiple work stations
- 🔹 and much more



Pallet roller tracks

Rollers:

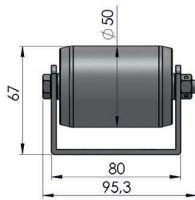
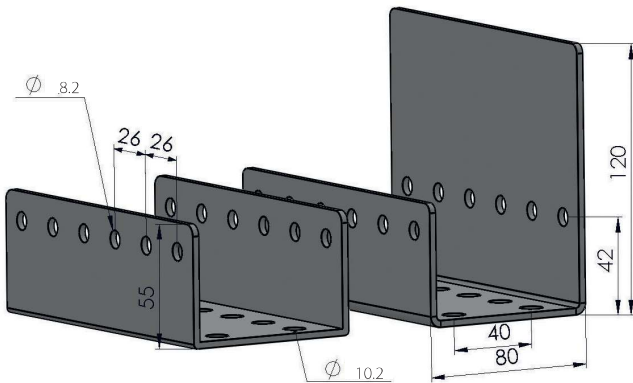
- steel rollers: in standard version or flanged roller with Ø 50 mm
- standard rollers with 2 mm PVC cover tubing, Ø 54 mm
- ball bearing-mounted
- load capacity: 160 kg/roller
- also available with reinforced TRM carrier rollers on request

Profile:

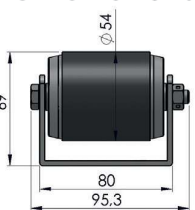
- made of galvanized steel sheet, S = 3 mm
- profile 2 has a bearing length of 6,000 mm;
- profile 3 has a max. length of 2,990 mm
- our pallet roller tracks are manufactured to match your required lengths and pitches

Profile 2

Profile 3



series NR100-2	pitch mm	roller material	bearing	load capacity / roller kg
NR100-052-2 Ident No.: 0021544	52	steel	ball bearing	160
NR100-078-2 Ident No.: 0021562	78	steel	ball bearing	160
NR100-104-2 Ident No.: 0021582	104	steel	ball bearing	160
NR100-130-2 Ident No.: 0021603	130	steel	ball bearing	160
NR100-156-2 Ident No.: 0021605	156	steel	ball bearing	160
NR100-182-2 Ident No.: 0021607	182	steel	ball bearing	160
NR100-208-2 Ident No.: 0021609	208	steel	ball bearing	160



series NR110-2	pitch mm	roller material	bearing	load capacity / roller kg
NR110-078-2 Ident No.: 0027304	78	steel roller with PVC cover tube	ball bearing	160
NR110-104-2 Ident No.: 0027306	104	steel roller with PVC cover tube	ball bearing	160
NR110-130-2 Ident No.: 0027308	130	steel roller with PVC cover tube	ball bearing	160
NR110-156-2 Ident No.: 0027310	156	steel roller with PVC cover tube	ball bearing	160
NR110-182-2 Ident No.: 0027312	182	steel roller with PVC cover tube	ball bearing	160
NR110-208-2 Ident No.: 0027314	208	steel roller with PVC cover tube	ball bearing	160

pallet roller tracks // up to 160 kg per roller

Installation:

- middle of first roller is set 39 mm from the profile edge, running to the end of the track
- a defined initial roller gap is available at extra cost if required; please specify when ordering

Screwed connection:

- with steel screw (M8)

A roller pitch of 52 mm is required for transverse transporting of pallets. Depending on the weight of the pallet, two or three roller tracks with a roller pitch of 104–208 mm are used for conveying the pallets.

When ordering, please specify the desired track type (type of roller and pitch) and your desired length:

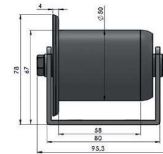
Order example: NR100-052-2/2x1,500

The conveyed goods must rest on at least three rollers in order to ensure that they are conveyed smoothly and do not tip over. The distance or pitch between the axles refers to the distance between the centre points of adjacent rollers.



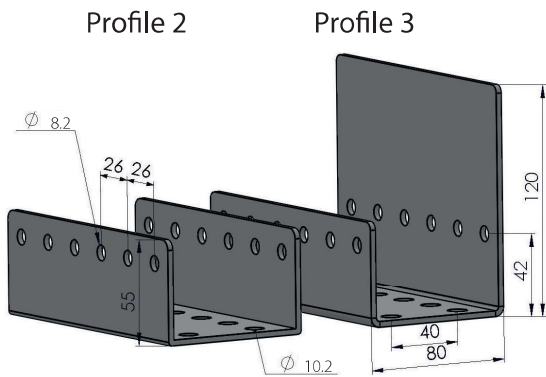
“Many new accessories for our perennial favorite are available on page 665”

series SR100-2	pitch mm	roller material	bearing	load capacity / roller kg
SR100-078-2 Ident No.: 0021611	78	steel	ball bearing	160
SR100-104-2 Ident No.: 0021613	104	steel	ball bearing	160
SR100-130-2 Ident No.: 0021615	130	steel	ball bearing	160
SR100-156-2 Ident No.: 0021617	156	steel	ball bearing	160
SR100-182-2 Ident No.: 0021619	182	steel	ball bearing	160
SR100-208-2 Ident No.: 0021621	208	steel	ball bearing	160

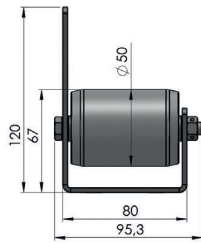


Suitable castors can be found on page 665

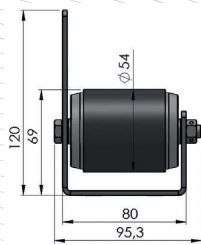
pallet roller tracks // up to 160 kg per roller



“Profile raised on one side in order to guide the conveyed goods: this prevents sliding and tilting”

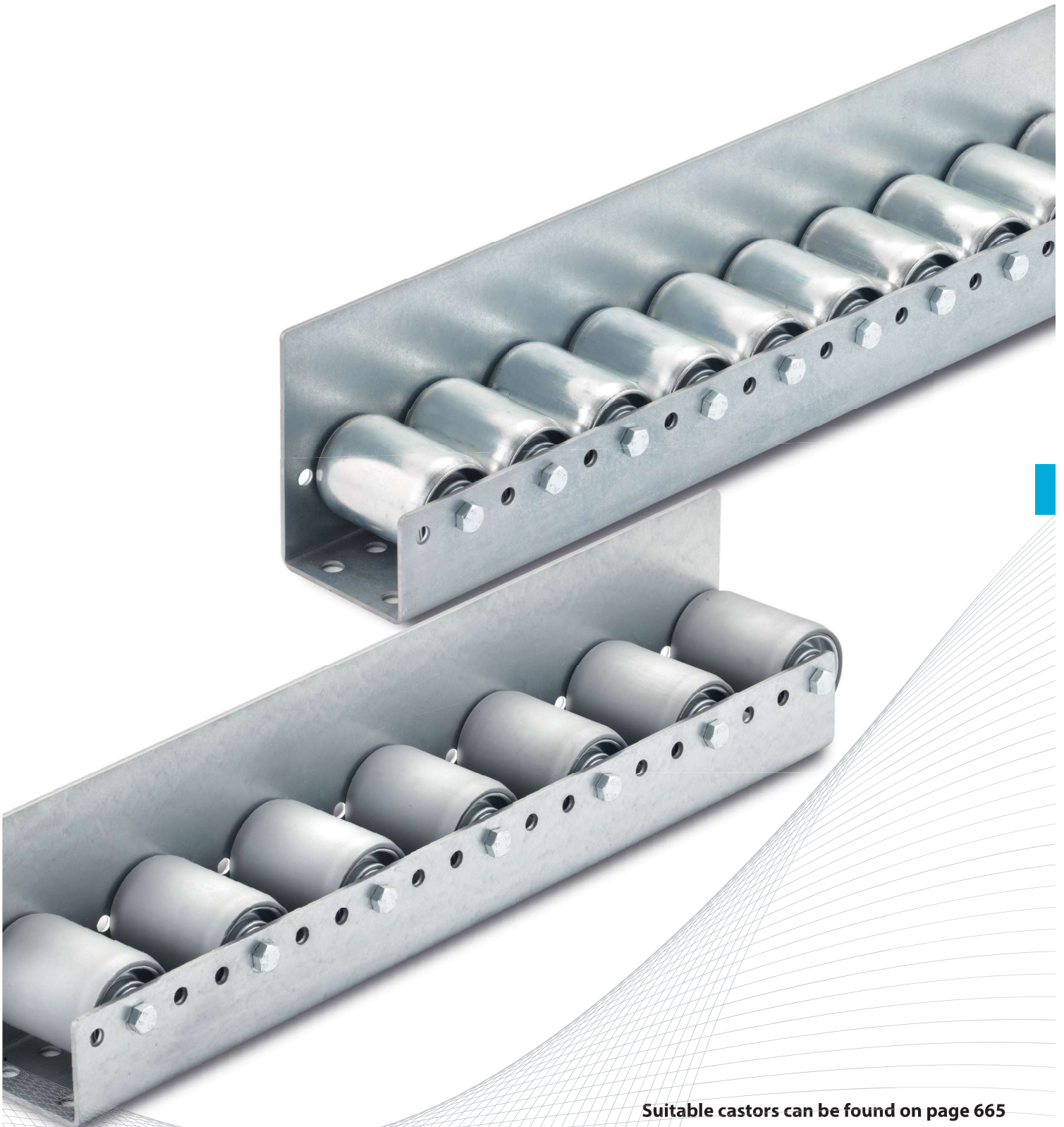


series NR100-3	pitch mm	roller material	bearing	load capacity / roller kg
NR100-052-3 Ident No.: 0027315	52	steel	ball bearing	160
NR100-078-3 Ident No.: 0027316	78	steel	ball bearing	160
NR100-104-3 Ident No.: 0027317	104	steel	ball bearing	160
NR100-130-3 Ident No.: 0027318	130	steel	ball bearing	160
NR100-156-3 Ident No.: 0027319	156	steel	ball bearing	160
NR100-182-3 Ident No.: 0027320	182	steel	ball bearing	160
NR100-208-3 Ident No.: 0027321	208	steel	ball bearing	160



series NR110-3	pitch mm	roller material	bearing	load capacity / roller kg
NR110-078-3 Ident No.: 0027289	78	steel roller with PVC cover tube	ball bearing	160
NR110-104-3 Ident No.: 0027290	104	steel roller with PVC cover tube	ball bearing	160
NR110-130-3 Ident No.: 0027291	130	steel roller with PVC cover tube	ball bearing	160
NR110-156-3 Ident No.: 0027292	156	steel roller with PVC cover tube	ball bearing	160
NR110-182-3 Ident No.: 0027293	182	steel roller with PVC cover tube	ball bearing	160
NR110-208-3 Ident No.: 0027294	208	steel roller with PVC cover tube	ball bearing	160

pallet roller tracks // up to 160 kg per roller

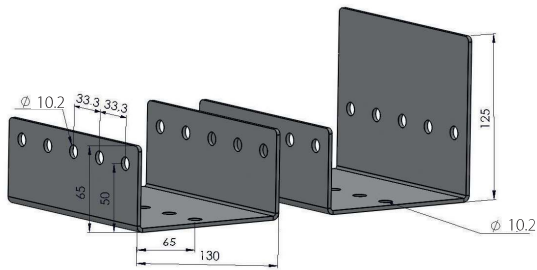


Suitable castors can be found on page 665

width, pallet roller tracks // up to 160 kg per roller

Profile 1

Profile 3



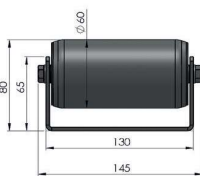
Width, pallet roller tracks

Roller:

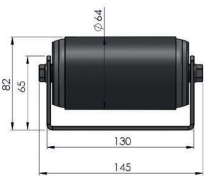
- steel rollers: in standard version or flanged roller with \varnothing 60 mm
- standard rollers with 2 mm PVC cover tubing, \varnothing 64 mm
- ball bearing-mounted
- load capacity: 160 kg/roller

Profile:

- made of galvanized steel sheet, $S = 2.8$ mm
- profile 1: max. 6,000 mm; profile 3: max. 2,966 mm
- our pallet roller tracks are manufactured to match your required lengths and pitches



series NR200-1	pitch mm	roller material	bearing	load capacity / roller kg
NR200-066-1 Ident No.: 0022361	66	steel	ball bearing	160
NR200-100-1 Ident No.: 0022356	100	steel	ball bearing	160
NR200-133-1 Ident No.: 0022357	133	steel	ball bearing	160
NR200-166-1 Ident No.: 0022358	166	steel	ball bearing	160
NR200-200-1 Ident No.: 0022359	200	steel	ball bearing	160



series NR210-1	pitch mm	roller material	bearing	load capacity / roller kg
NR210-066-1 Ident No.: 0040496	66	steel roller with PVC cover tube	ball bearing	160
NR210-100-1 Ident No.: 0027275	100	steel roller with PVC cover tube	ball bearing	160
NR210-133-1 Ident No.: 0027276	133	steel roller with PVC cover tube	ball bearing	160
NR210-166-1 Ident No.: 0027277	166	steel roller with PVC cover tube	ball bearing	160
NR210-200-1 Ident No.: 0027278	200	steel roller with PVC cover tube	ball bearing	160

width, pallet roller tracks // up to 160 kg per roller

Installation:

- middle of first roller is set 50 mm from the profile edge, running to the end of the track
- a defined initial roller gap is available at extra cost if required; please specify when ordering


Screwed connection:

- with steel screws (M10)

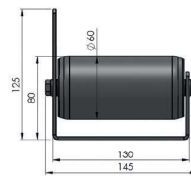
When ordering, please specify the desired track type (type of roller and pitch) and your desired length:

Order example: NR200-100-1/2x1,500

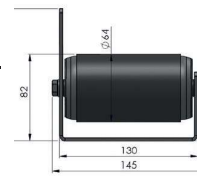
The conveyed goods must rest on at least three rollers in order to ensure that they are conveyed smoothly and do not tip over. The distance or pitch between the axles refers to the distance between the center points of adjacent rollers.

 **“Profile raised on one side in order to guide the conveyed goods: this prevents sliding and tilting”**

series NR200-3	pitch mm	roller material	bearing	load capacity / roller kg
NR200-066-3 Ident No.: 0027284	66	steel	ball bearing	160
NR200-100-3 Ident No.: 0027285	100	steel	ball bearing	160
NR200-133-3 Ident No.: 0027286	133	steel	ball bearing	160
NR200-166-3 Ident No.: 0027287	166	steel	ball bearing	160
NR200-200-3 Ident No.: 0027288	200	steel	ball bearing	160



series NR210-3	pitch mm	roller material	bearing	load capacity / roller kg
NR210-066-3 Ident No.: 0027279	66	steel roller with PVC cover tube	ball bearing	160
NR210-100-3 Ident No.: 0027280	100	steel roller with PVC cover tube	ball bearing	160
NR210-133-3 Ident No.: 0027281	133	steel roller with PVC cover tube	ball bearing	160
NR210-166-3 Ident No.: 0027282	166	steel roller with PVC cover tube	ball bearing	160
NR210-200-3 Ident No.: 0027283	200	steel roller with PVC cover tube	ball bearing	160



Suitable castors can be found on page 666

heavy-duty roller track // up to 1,000 kg per roller

Heavy-duty roller track series 998 and 999

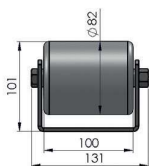
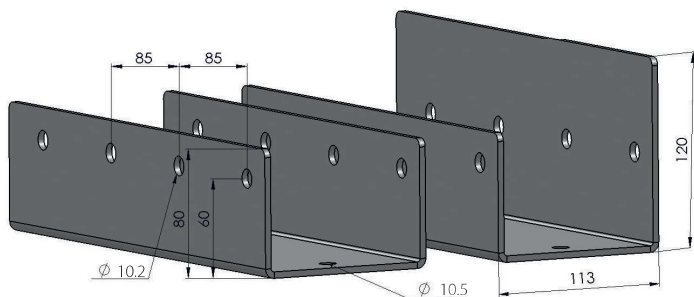
Rollers:

- polyamide or polyurethane rollers

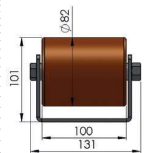
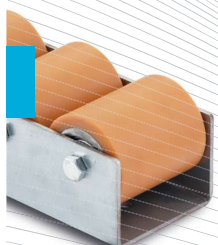
Profile:

- 4 mm thick, galvanized profile, S = 3 mm
- optionally available with raised section on one side
- max. length: 2,975 mm

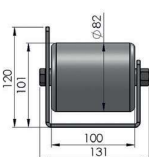
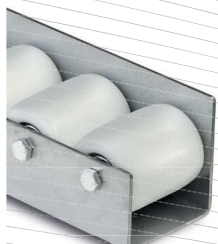
Our heavy-duty roller tracks are manufactured to match your required lengths and pitches. Profile raised on one side in order to guide the conveyed goods: this prevents sliding and tilting.



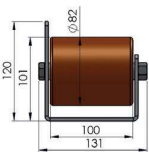
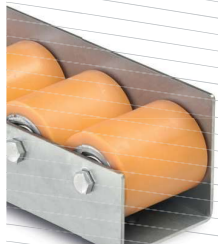
series 998-KN82	pitch mm	roller material	bearing	load capacity / roller kg
998-SRS100-85-KN82 Ident No.: 0029192	85	polyamide	deep-groove ball bearing	1,000
998-SRS100-170-KN82 Ident No.: 0029193	170	polyamide	deep-groove ball bearing	1,000



series 998-VN82	pitch mm	roller material	bearing	load capacity / roller kg
998-SRS100-85-VN82 Ident No.: 0029194	85	polyurethane	deep-groove ball bearing	700
998-SRS100-170-VN82 Ident No.: 0029195	170	polyurethane	deep-groove ball bearing	700



series 999-KN82	pitch mm	roller material	bearing	load capacity / roller kg
999-SRS100-85-KN82-3 Ident No.: 0014772	85	polyamide	deep-groove ball bearing	1,000
999-SRS100-170-KN82-3 Ident No.: 0014771	170	polyamide	deep-groove ball bearing	1,000



series 999-VN82	pitch mm	roller material	bearing	load capacity / roller kg
999-SRS100-85-VN82-3 Ident No.: 0010878	85	polyurethane	deep-groove ball bearing	700
999-SRS100-170-VN82-3 Ident No.: 0029196	170	polyurethane	deep-groove ball bearing	700

Suitable castors can be found on page 666

heavy-duty roller track // up to 655 kg per roller

Heavy-duty roller track US-N09:

When compared with conventional US-NR tracks, our heavy-duty US-NR09 roller track is made from a stronger profile (44 x 28 x 44 x 3 mm). In addition, stable deep-groove ball bearings 6204-2RS are used instead of rollers.

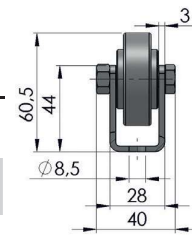
The max. length is 2,975 mm.

When ordering, please specify the desired track type (type of roller and pitch) and your desired length:

Order example: US-NR09-050/2x1,500

The conveyed goods must rest on at least three rollers in order to ensure that they are conveyed smoothly and do not tip over. The distance or pitch between the axles refers to the distance between the center points of adjacent rollers.

series US-NR09	pitch mm	roller material	bearing	load capacity / roller kg
US-NR09-050 Ident No.: 0027860	50	steel blank	deep-groove ball bearing	655
US-NR09-075 Ident No.: 0029175	75	steel blank	deep-groove ball bearing	655
US-NR09-100 Ident No.: 0029176	100	steel blank	deep-groove ball bearing	655
US-NR09-125 Ident No.: 0029177	125	steel blank	deep-groove ball bearing	655
US-NR09-150 Ident No.: 0029178	150	steel blank	deep-groove ball bearing	655
US-NR09-175 Ident No.: 0029179	175	steel blank	deep-groove ball bearing	655
US-NR09-200 Ident No.: 0029180	200	steel blank	deep-groove ball bearing	655





Multi-transfer tracks

Our reliable multi-transfer tracks are suitable for transporting various types of load carriers (such as heavy lattice crates, pallets, JIT and JIS racks).

We use minimized roller spacing and high load-carrying capabilities to carry heavy loads on very small support points. Transport containers with bases that are not completely ideal (e.g., lattice crates) can be integrated into the logistics system.

We can also deliver complete solutions that are individually tailored to your requirements; our support already begins during the planning phase for your project. Take advantage of our in-depth experience and benefit from our assessment of your operating conditions and influencing factors (including the suitability of using roller conveyors for your goods) – leave nothing to chance.

Versions

- offset ball bearing 6300-2RS
- rollers Ø 38 mm in standard lengths 60/100/146 mm
- rollers Ø 42 mm in standard length 100 mm

Model variants

- base frame (heavy welded construction)
- drive protection for fork lift trucks
- pneumatic lifting device
- side guide
- end stops

Areas of use

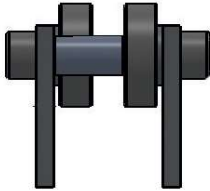
- conveyor systems
- storage strategies (FIFO, LIFO)
- machine construction
- assembly areas
- material supply and discharge
- and much more



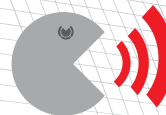
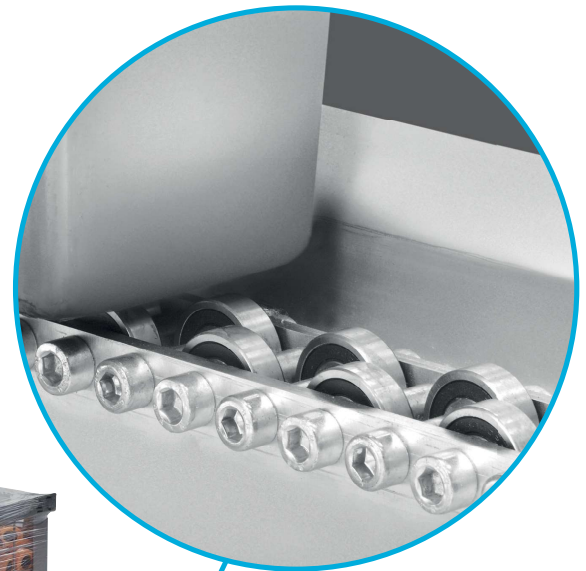
+49 800 9341700

Give us a call for more advice on planning your personal facility.

Standard **multi-transfer track**



- rollers: 6300-2RS bearings with offset arrangement
- side panels galvanized as default
- temperature resistant up to 120° C
- load capacity: max. 345 kg per ball bearing
- order number for straight section: 0033501

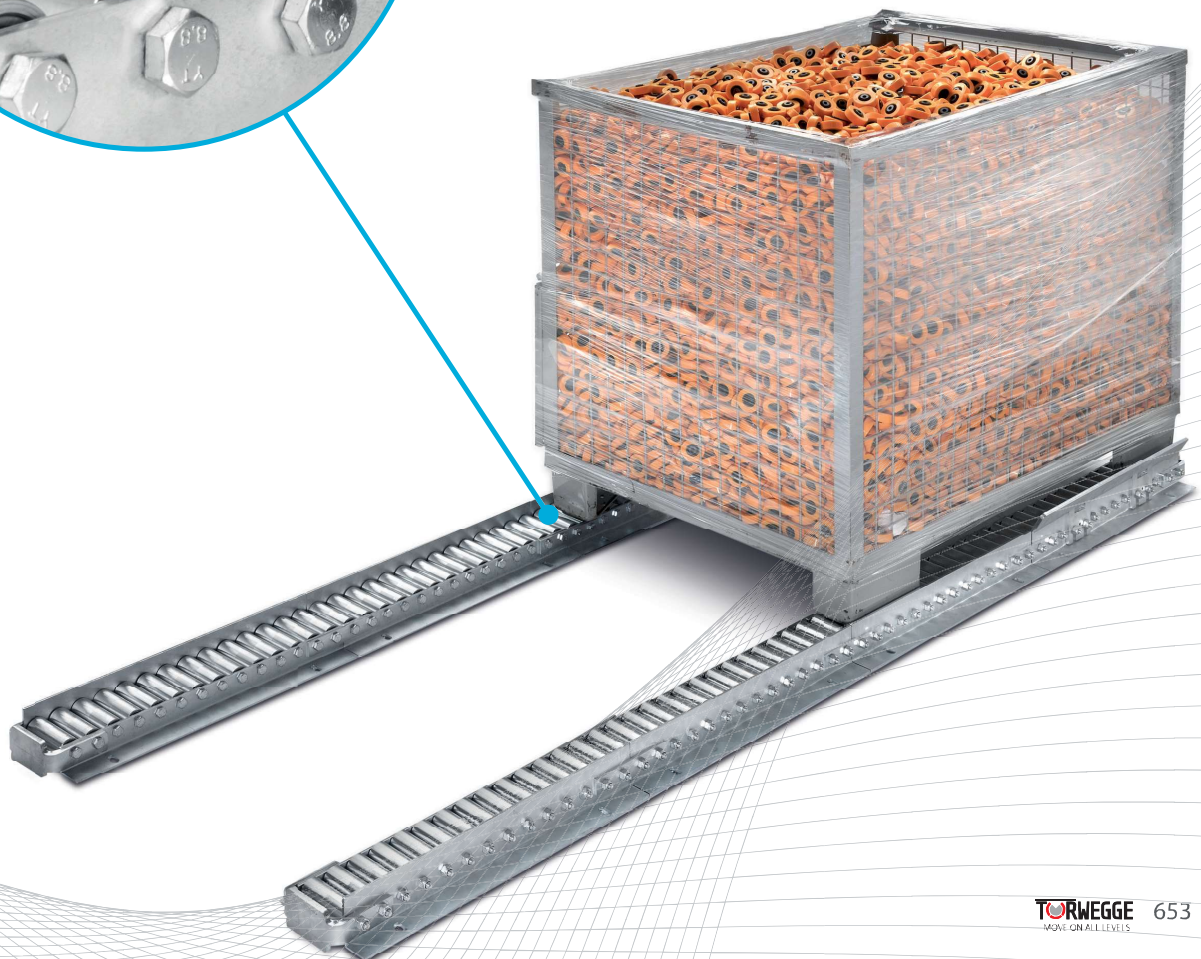
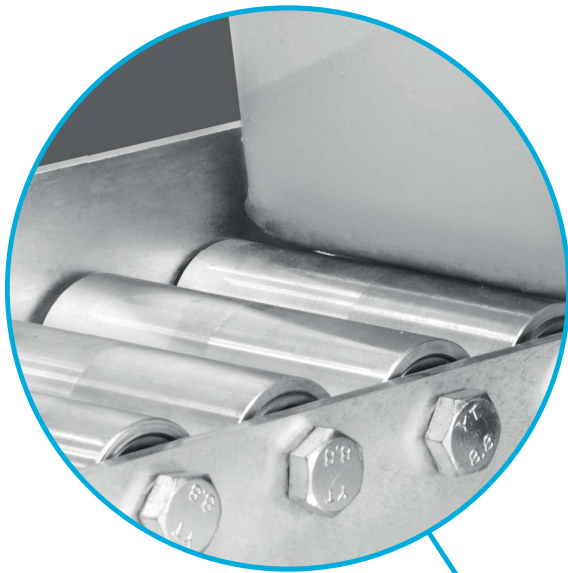
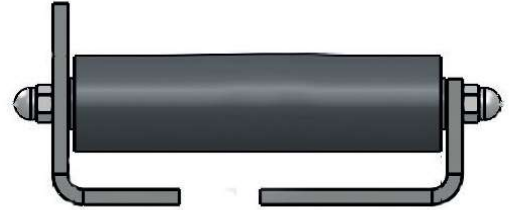


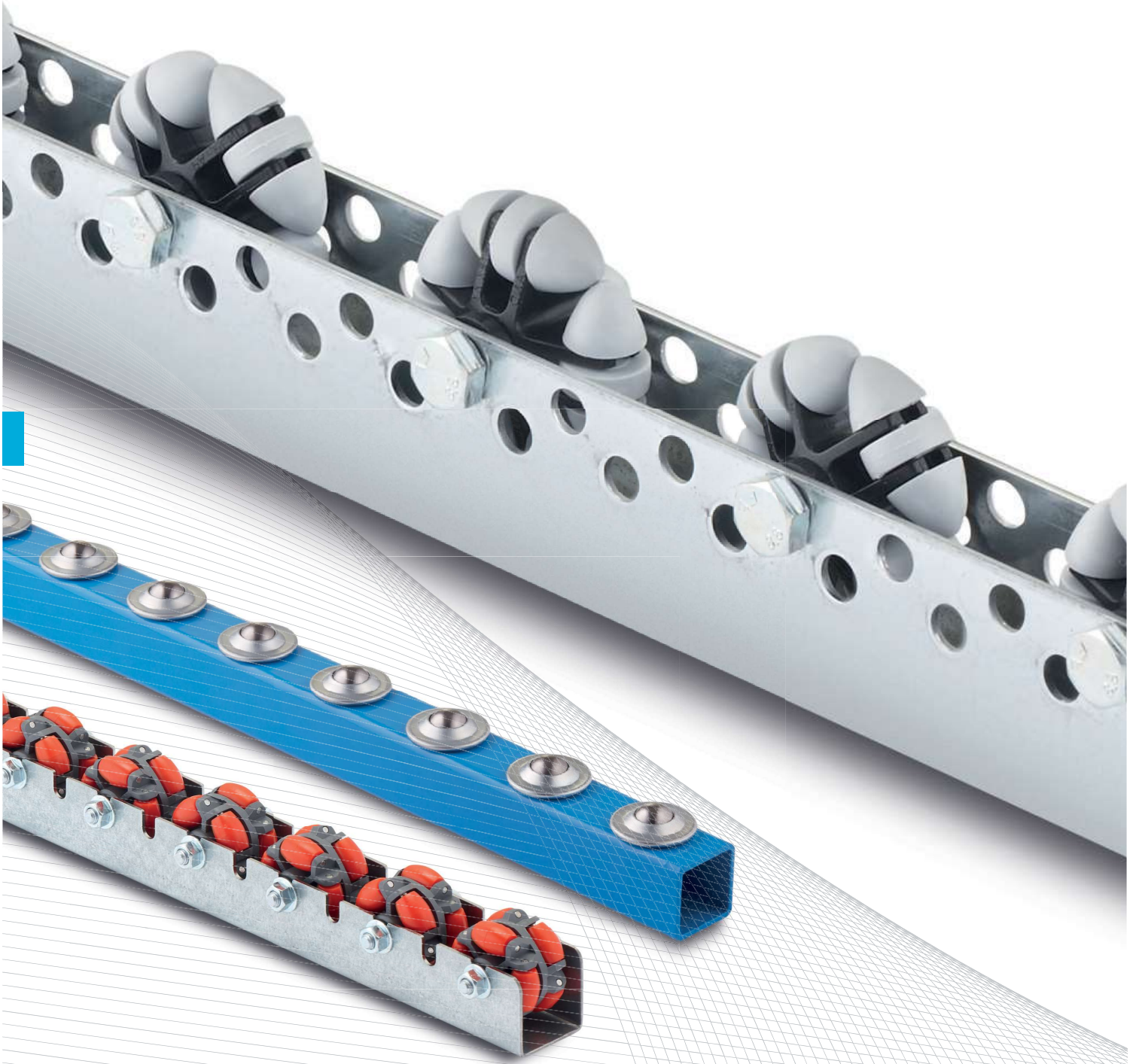
"Please check out our new applications from page 457"

Suitable castors can be found on page 666

Heavy-duty multi transfer track

- carrier rollers: with deep-groove ball bearings 6200-RS
- standard design: carrier rollers in bright steel
- side panels painted according to RAL
- load capacity: max. 200 kg per carrier roller
- order number for straight section: 0033502





Special multi-directional and ball transfer tracks

Our special multi-directional and ball transfer tracks are used wherever conveyed goods with flat supporting surfaces must be rotated in different directions, sorted and transported.

Versions

- multi-directional rollers with polyamide barrel rollers
- multi-directional rollers with polyurethane barrel rollers
- ball rollers with steel sheet housing and steel ball

Model variants

- ball rollers with a nylon ball
- ball rollers with a solid housing
- stainless steel version

Areas of use

- automotive industry
- machine construction
- packaging industry
- wood and furniture industry
- stone-working machines
- and much more



multi-directional roller tracks // up to 10 kg per roller

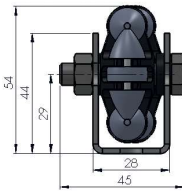
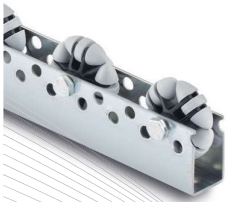
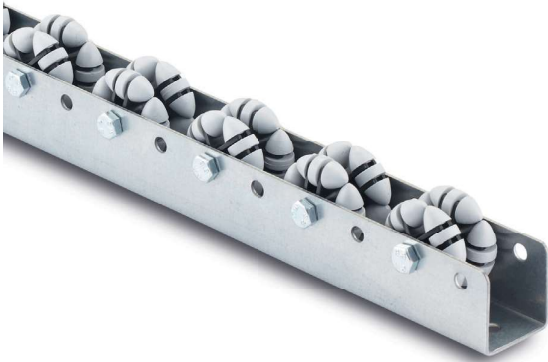
Multi-directional roller tracks, type ASR

Rollers:

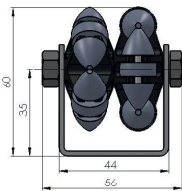
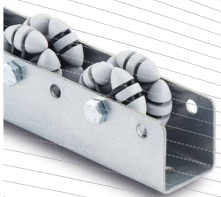
- rollers made of polyamide

Profile:

- made of galvanized sheet steel
- track type ASRS10 and ASRS60, max. length of 6,000 mm
- track type ASRS50 and ASRS80, max. length of 2,966 mm
- our multi-directional roller tracks are manufactured to match your required lengths and pitches



series ASRS10	pitch mm	roller material	bearing	load capacity / roller kg
ASRS10-050 Ident No.: 0014882	50	plastic	plain bearing	5
ASRS10-075 Ident No.: 0014883	75	plastic	plain bearing	5
ASRS10-100 Ident No.: 0014880	100	plastic	plain bearing	5
ASRS10-125 Ident No.: 0014881	125	plastic	plain bearing	5



series ASRS50	pitch mm	roller material	bearing	load capacity / roller kg
ASRS50-066 Ident No.: 0014964	66	plastic	plain bearing	10
ASRS50-100 Ident No.: 0014961	100	plastic	plain bearing	10
ASRS50-133 Ident No.: 0014962	133	plastic	plain bearing	10
ASRS50-166 Ident No.: 0014963	166	plastic	plain bearing	10

multi-directional roller tracks // up to 40 kg per roller

Torwegge's multi-directional roller tracks can be used wherever there are large-surface bundles, containers, packages, load crates, or workpieces that need to be rotated, sorted, diverted, fed, or picked.

We recommend using the multi-directional rollers for the main conveying direction, since the rolling resistance is slightly greater in the secondary conveying direction.

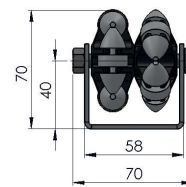
The dimensions and weight of the material being conveyed will determine the spacing of the rollers or the bars. The relevant forces should be determined, when necessary, through trial runs.

When ordering, please specify the desired track type (type of roller and pitch) and your desired length:

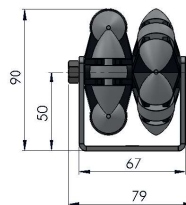
Order example: ASRS50-100/2x1,500

The conveyed goods must rest on at least three rollers in order to ensure that they are conveyed smoothly and do not tip over. The distance or pitch between the axles refers to the distance between the centre points of adjacent rollers.

series ASRS60	pitch mm	roller material	bearing	load capacity / roller kg
ASRS60-066 Ident No.: 0014966	66	plastic	plain bearing	20
ASRS60-100 Ident No.: 0014967	100	plastic	plain bearing	20
ASRS60-133 Ident No.: 0014968	133	plastic	plain bearing	20
ASRS60-166 Ident No.: 0014969	166	plastic	plain bearing	20

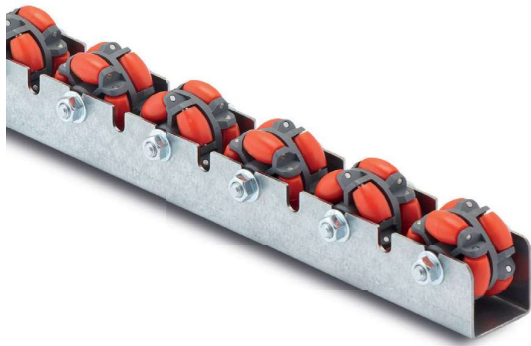


series ASRS80	pitch mm	roller material	bearing	load capacity / roller kg
ASRS80-100 Ident No.: 0014975	100	plastic	plain bearing	40
ASRS80-133 Ident No.: 0014976	133	plastic	plain bearing	40
ASRS80-166 Ident No.: 0014977	166	plastic	plain bearing	40
ASRS80-200 Ident No.: 0014978	200	plastic	plain bearing	40



Suitable castors can be found on page 666

multi-directional roller tracks // up to 15 kg per roller



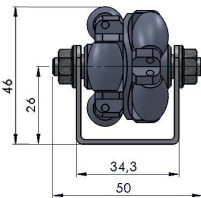
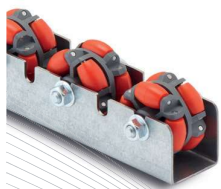
Multi-directional roller tracks, type AWRS

Rollers:

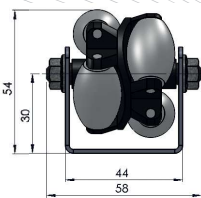
- polyamide barrel rollers (or optionally in PUR) with stainless steel axles
- the roller wheels are equipped with ribs; there are six offset barrel rollers located between the ribs

Profile:

- made of galvanized sheet steel
- rail type: AWRS40: max. length of 2,975 mm
- rail type: AWRS48 and AWRS80: max. length of 2,950 mm
- our multi-directional roller tracks are manufactured to match your required lengths and pitches



series AWRS40	pitch mm	roller material	bearing	load capacity / roller kg
AWRS40-050-A Ident No.: 0015035	50	polyamide	plain bearing	10
AWRS40-075-A Ident No.: 0040497	75	polyamide	plain bearing	10
AWRS40-100-A Ident No.: 0026767	100	polyamide	plain bearing	10
AWRS40-150-A Ident No.: 0040498	150	polyamide	plain bearing	10
AWRS40-200-A Ident No.: 0040500	200	polyamide	plain bearing	10



series AWRS48	pitch mm	roller material	bearing	load capacity / roller kg
AWRS48-050-A Ident No.: 0015038	50	polyamide	plain bearing	15
AWRS48-100-A Ident No.: 0015036	100	polyamide	plain bearing	15
AWRS48-150-A Ident No.: 0024074	150	polyamide	plain bearing	15
AWRS48-200-A Ident No.: 0027788	200	polyamide	plain bearing	15

multi-directional roller tracks // up to 40 kg per roller

Torwegge's multi-directional roller tracks can be used wherever there are large-surface bundles, containers, packages, load crates, or workpieces that need to be rotated, sorted, diverted, fed, or picked.

We recommend using the multi-directional rollers for the main conveying direction, since the rolling resistance is slightly greater in the secondary conveying direction.

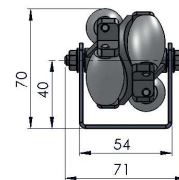
The dimensions and weight of the material being conveyed will determine the spacing of the rollers or the bars. The relevant forces should be determined, when necessary, through trial runs.

When ordering, please specify the desired track type (type of roller and pitch) and your desired length:

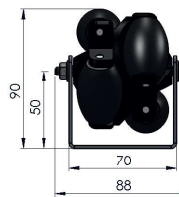
Order example: AWRS48-100/2x1,500

The conveyed goods must rest on at least three rollers in order to ensure that they are conveyed smoothly and do not tip over. The distance or pitch between the axles refers to the distance between the centre points of adjacent rollers.

series AWRS60	pitch mm	roller material	bearing	load capacity / roller kg
AWRS60-100-A Ident No.: 0015041	100	polyamide	plain bearing	20
AWRS60-150-A Ident No.: 0015042	150	polyamide	plain bearing	20
AWRS60-200-A Ident No.: 0027826	200	polyamide	plain bearing	20



series AWRS80	pitch mm	roller material	bearing	load capacity / roller kg
AWRS80-100-A Ident No.: 0015044	100	polyamide	plain bearing	40
AWRS80-150-A Ident No.: 0040501	150	polyamide	plain bearing	40
AWRS80-200-A Ident No.: 0040503	200	polyamide	plain bearing	40



ball transfer tracks // up to 60 kg per roller



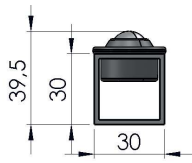
Ball transfer tracks

Ball transfer units:

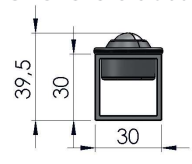
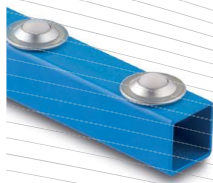
- ball transfer units in galvanized housing with steel or plastic ball
- also available with stainless steel ball and solid housing on request

Profile:

- painted steel (RAL 5017 traffic blue)
- bright steel also available; galvanized and RAL colors available on request
- max. length: 6,000 mm
- our ball transfer tracks are manufactured to match your required lengths and pitches



series KRS15B	pitch mm	roller material	load capacity / roller kg
KRS15B-050 Ident No.: 0017457	50	steel	60
KRS15B-075 Ident No.: 0017458	75	steel	60
KRS15B-100 Ident No.: 0017454	100	steel	60
KRS15B-125 Ident No.: 0017455	125	steel	60
KRS15B-150 Ident No.: 0017456	150	steel	60



series KRS15B-KU	pitch mm	roller material	load capacity / roller kg
KRS15B-KU-050 Ident No.: 0040504	50	plastic	10
KRS15B-KU-075 Ident No.: 0031127	75	plastic	10
KRS15B-KU-100 Ident No.: 0033571	100	plastic	10
KRS15B-KU-125 Ident No.: 0032524	125	plastic	10
KRS15B-KU-150 Ident No.: 0027649	150	plastic	10

ball transfer tracks // up to 160 kg per roller

Ball transfer tracks are used for smoothly transporting all types of large-surface and stable loads in all directions, with rolling friction. Using ball transfer units and ball transfer tracks, it is possible to move and turn hard, large-surface goods in all horizontal directions with little expenditure of energy.

The specified load-carrying capacities refer to conveyed goods with smooth, hard bottoms. In practice, however, considerably more ball transfer units than indicated by the theoretical load-carrying capacity must often be used. This depends on the surface quality of the conveyed goods.

Installation:

The initial and final dimensions are determined at the time of production and depend on the pitch and length.

When ordering, please specify the desired track type (type of roller and pitch) and your desired length:

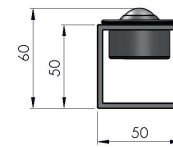
Order example: KRS15B-075/2x1,500

The conveyed goods must rest on at least three rollers in order to ensure that they are conveyed smoothly and do not tip over. The distance or pitch between the axles refers to the distance between the centre points of adjacent rollers.



"We can turn you in any direction"

series KRS22B	pitch mm	roller material	load capacity / roller kg
KRS22B-075 Ident No.: 0031582	75	steel	160
KRS22B-100 Ident No.: 0017460	100	steel	160
KRS22B-150 Ident No.: 0017461	150	steel	160
KRS22B-200 Ident No.: 0017462	200	steel	160



series KRS22B-KU	pitch mm	roller material	load capacity / roller kg
KRS22B-KU-075 Ident No.: 0027618	75	plastic	20
KRS22B-KU-100 Ident No.: 0028007	100	plastic	20
KRS22B-KU-150 Ident No.: 0027872	150	plastic	20
KRS22B-KU-200 Ident No.: 0040505	200	plastic	20

