






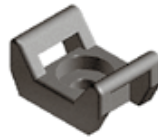
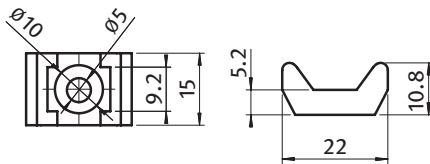
	Universal-Kabelbinderblock	<i>Universal Cable Binding Block</i>	747
	Clip-Kabelbinder	<i>Clip Cable Binder</i>	748
	Kabelbinderblock	<i>Cable Binding Block</i>	749
	Kreuz-Kabelbinderblock	<i>Cross Cable Binding Block</i>	750
	Clip-Kabelbinder mit Hammer	<i>Clip Cable Binder with Hammer</i>	751
	Clip-Kabelbinder mit Hammer	<i>Clip Cable Binder with Hammer</i>	752
	Steck-Kabelbinder mit Hammer	<i>Snap-Cable-Binding with Hammer</i>	753
	Schnellverbinder	<i>Quick Connector</i>	754



UNIVERSAL-KABELBINDERBLOCK

UNIVERSAL CABLE BINDING BLOCK

Ausführung	Kunststoff PA, Nut 5-12	Model	Plastic PA, slot 5-12
Beschreibung	zur Befestigung von Kabeln an einem Profil; Montage mittels Hammerkopfmutter o. ä.	Description	To secure cables to aluminum profiles; to be mounted with a hammer nut
Material	Kunststoff PA, glasfaserverstärkt	Material	Plastic PA, glass fiber reinforced
Farbe	schwarz	Color	Black
Liefereinheit	100 Stück	Pack Quantity	100 pieces
Extras	weitere Farben auf Anfrage	Specials	Other colors on request
Hinweis	Hammermuttern ab Seite 293 f.	Tip	Hammer nuts from page 293 et seq.



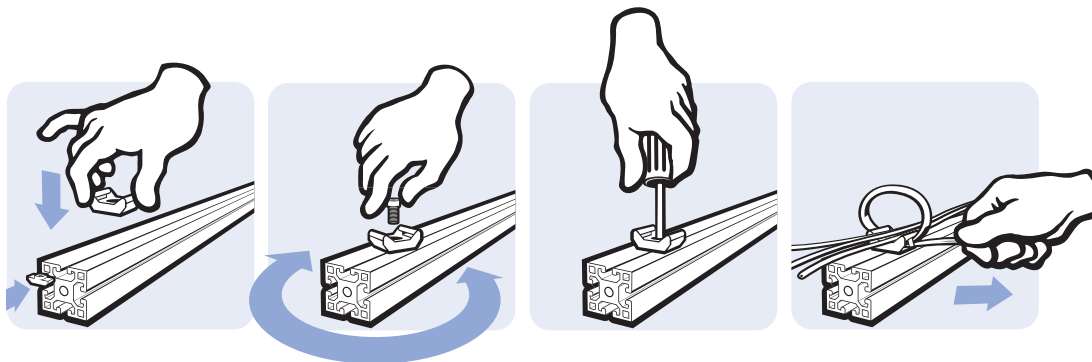
Universal-Kabelbinderblock
 Universal Cable Binding Block

Gewicht [g]
 Weight [g]

1.6

Teil-Nr.
 Part #

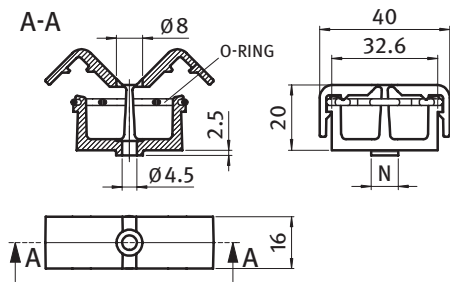
093059



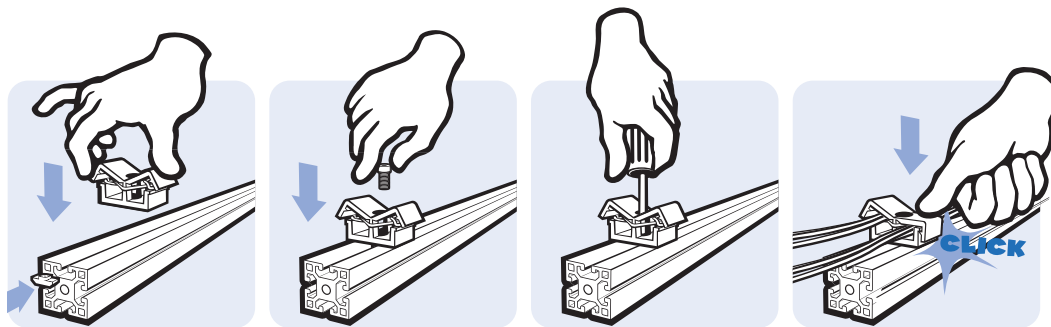
CLIP-KABELBINDER

CLIP CABLE BINDER

Ausführung	2 Kammern	Model	2 chambers
Beschreibung	zur Befestigung von Kabeln ohne zusätzlichen Kabelbinder, wiederverschließbar	Description	To fix cables without the need for cable ties, can be opened and closed again
Material	Clip: Kunststoff PA Gummi: FPM 70	Material	Clip: Plastic PA Rubber: FPM 70
Farbe	schwarz	Color	Black
Befestigung	vorderseitig mit Linsen- oder Zylinderschrauben M4	Fastening	From the front, using M4 lens or socket head screws
Liefereinheit	10 Stück	Pack Quantity	10 pieces
Extras	☁ elektrostatisch entladend, weitere Größen, weitere Farben auf Anfrage	Specials	☁ electrostatically discharging, other sizes, other colors on request



Clip-Kabelbinder Clip Cable Binder	N	Gewicht [g] Weight [g]	Teil-Nr. Part #
		7.0	093401
	8	7.0	093401N08
	10	7.0	093401N10





KABELBINDERBLOCK

CABLE BINDING BLOCK

Ausführung Kunststoff PA, Nut 8, 10

Beschreibung zur Befestigung von Kabeln an einem Profil; Montage mittels einer Vierteldrehung in der Nut

Material Kabelbinderblock:
 Kunststoff PA, glasfaserverstärkt
 Velcro®-Klettband:
 Kunststoff PE (Haken), Kunststoff PA (Velours)

Farbe schwarz

Liefereinheit 100 Stück

Extras individueller Hammer, weitere Farben auf Anfrage

Model Plastic PA, slot 8, 10

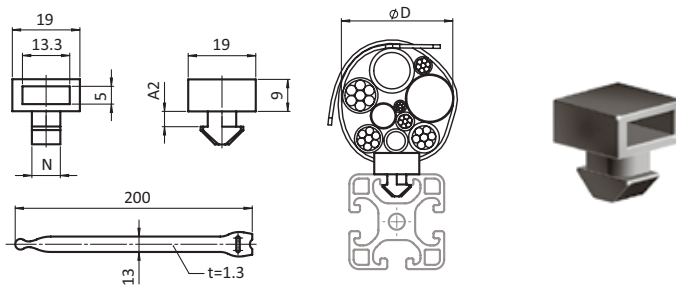
Description To secure cables to aluminum profiles; can be mounted into the slot by a quarter turn

Material Cable binding block:
 Plastic PA, glass fiber reinforced
 Velcro® strip:
 Plastic PE (hook), Plastic PA (loop)

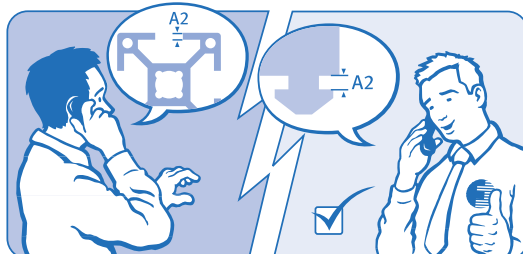
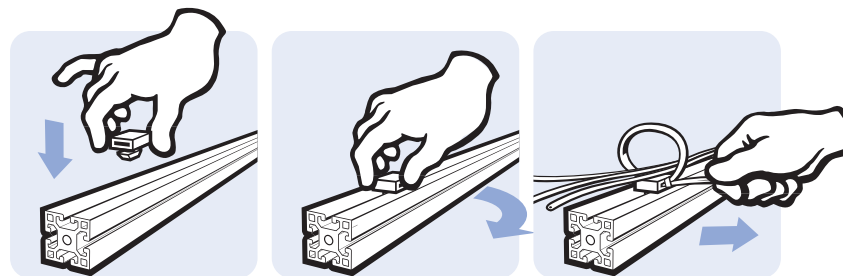
Color Black

Pack Quantity 100 pieces

Specials Customized hammer, other colors on request



Kabelbinderblock Cable Binding Block	A2 (Profil) [mm] A2 (Profile) [mm]	N	Ø D [mm]	Gewicht [g] Weight [g]	Profil Profile	Teil-Nr. Part #
	4.3 (4.5)	8		3.3	I	093054
	4.4 (4.5)	8		3.5	I	093051
	1.8 (2.2)	8		3.4	B	093058
	5.9 (6.0)	10		4.0	B	093050
inklusive Velcro®-Klettband With Velcro® strip	4.3 (4.5)	8	≤ 50	5.0	I	093054S03
	5.9 (6.0)	10	≤ 50	5.7	B	093050S03





KREUZ-KABELBINDERBLOCK

CROSS CABLE BINDING BLOCK

Ausführung Kunststoff PA, Nut 8, 10

Beschreibung zur Befestigung von Kabeln sowohl längs als auch quer zum Profil; Montage mittels einer Vierteldrehung in der Nut

Material Kabelbinderblock:
 Kunststoff PA, glasfaserverstärkt
 Velcro®-Klettband:
 Kunststoff PE (Haken), Kunststoff PA (Velour)

Farbe schwarz

Liefereinheit 100 Stück

Extras individueller Hammer, weitere Farben auf Anfrage

Model Plastic PA, slot 8, 10

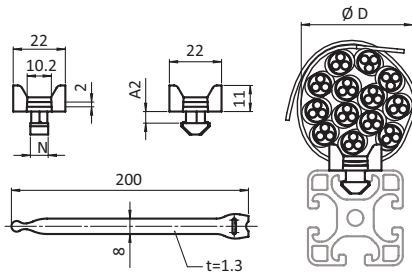
Description To secure cables to aluminum profiles in two directions; can be mounted into the slot by a quarter turn

Material Cable binding block:
 Plastic PA, glass fiber reinforced
 Velcro® strip:
 Plastic PE (hook), Plastic PA (loop)

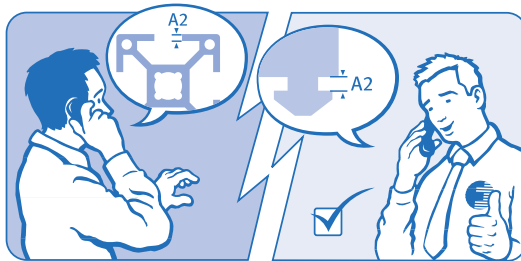
Color Black

Pack Quantity 100 pieces

Specials Customized hammer, other colors on request



Kreuz-Kabelbinderblock Cross Cable Binding Block	A2 (Profil) [mm] A2 (Profile) [mm]	D [mm]	N	Gewicht [g] Weight [g]	Profil Profile	Teil-Nr Part#
	4.4 (4.5)		8	3.8	I	093254
	4.6 (4.5)		8	4.0	I	093251
	2.1 (2.2)		8	3.6	B	093258
	5.8 (6.0)		10	4.4	B	093249
inklusive Velcro®-Klettband With Velcro® strip	4.4 (4.5)	≤ 50	8	5.5	I	093254S03
	5.8 (6.0)	≤ 50	10	6.1	B	093249S03

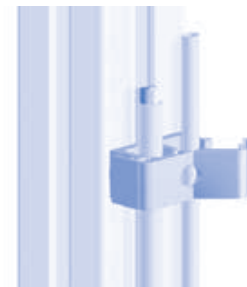
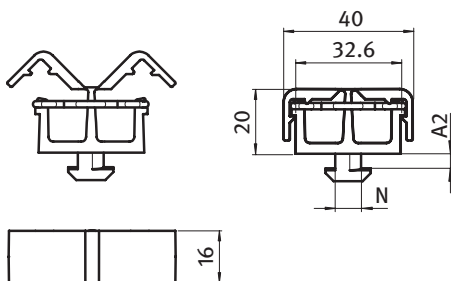




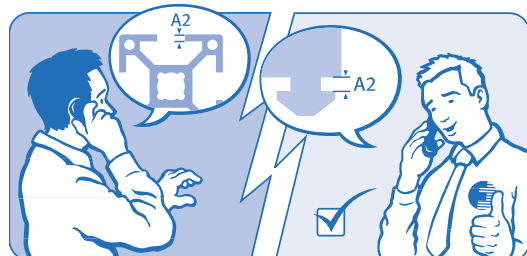
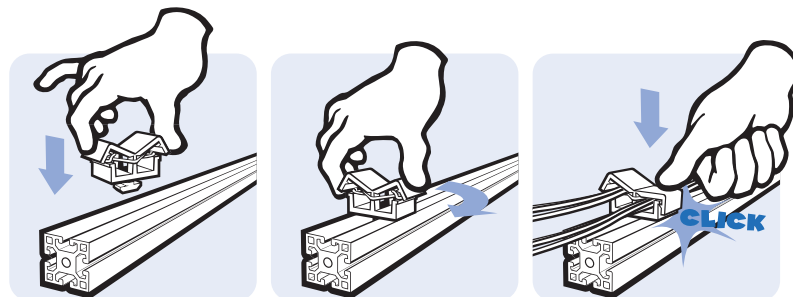
CLIP-KABELBINDER MIT HAMMER

CLIP CABLE BINDER WITH HAMMER

Ausführung	2 Kammern Kabel- und Schlauchhalter	Model	2 chamber fixation for cables and tubes
Beschreibung	zur Befestigung von Kabeln ohne zusätzlichen Kabelbinder, wiederverschließbar; Montage mittels einer Vierteldrehung in der Nut	Description	To fix cables without the need for cable ties, can be opened and closed again; can be mounted into the slot by a quarter turn
Material	Clip: Kunststoff PA Gummi: FPM 70	Material	Clip: Plastic PA Rubber: FPM 70
Farbe	schwarz	Color	Black
Liefereinheit	10 Stück	Pack Quantity	10 pieces
Extras	individueller Hammer, weitere Farben auf Anfrage	Specials	Customized hammer, other colors on request



Clip-Kabelbinder mit Hammer <i>Clip Cable Binder with Hammer</i>	A2 (Profil) [mm] A2 (Profile) [mm]	N	Gewicht [g] Weight [g]	Profil Profile	Teil-Nr. Part #
	1.8 (1.8)	5	7.0	I	093407N05
	2.2	6.5	7.0		093408N6,5
	4.0	8	6.9		093405N08
	4.5 (4.5)	8	7.0	I	093402N08
	2.0 (2.2)	8	7.0	B	093403N08
	5.9 (6.0)	10	7.2	B	093406N10





CLIP-KABELBINDER MIT HAMMER

CLIP CABLE BINDER WITH HAMMER

Ausführung 1 Kammer

Beschreibung zur Befestigung von Kabeln ohne zusätzlichen Kabelbinder, wiederverschließbar; Montage mittels einer Vierteldrehung in der Nut

Material Kunststoff PA

Farbe schwarz

Liefereinheit 10 Stück

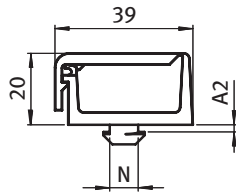
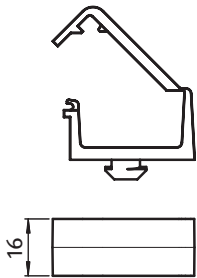
Model 1 chamber

Description To fix cables without the need for cable ties, can be opened and closed again; can be mounted into the slot by a quarter turn

Material Plastic PA

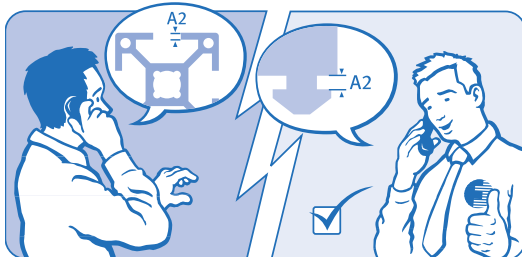
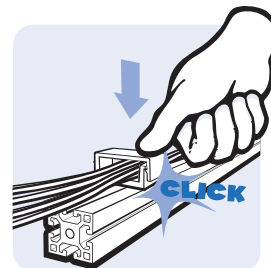
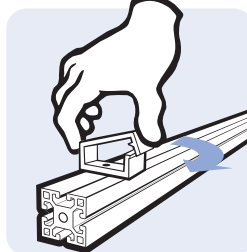
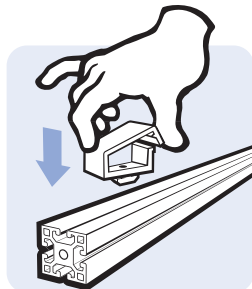
Color Black

Pack Quantity 10 pieces



Clip-Kabelbinder mit Hammer
Clip Cable Binder with Hammer

A2 (Profil) [mm] A2 (Profile) [mm]	N	Gewicht [g] Weight [g]	Profil Profile	Teil-Nr. Part #
1.6 (1.8)	5	7.0	I	093510N05
2.2	6.5	7.0		093512N6,5
2.0 (2.0)	8	7.0	B	093504N08
4.5 (4.5)	8	7.0	I	093505N08
5.9 (6.0)	10	7.0	B	093506N10



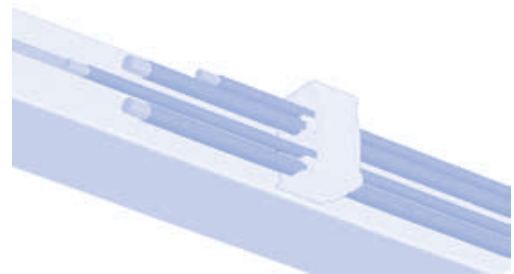
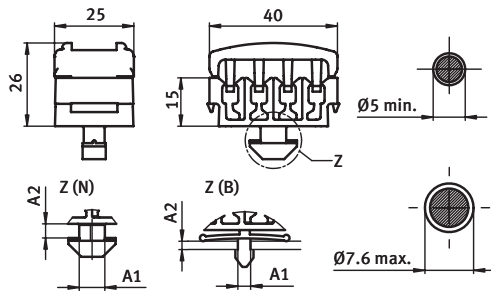


STECK-KABELBINDER MIT HAMMER

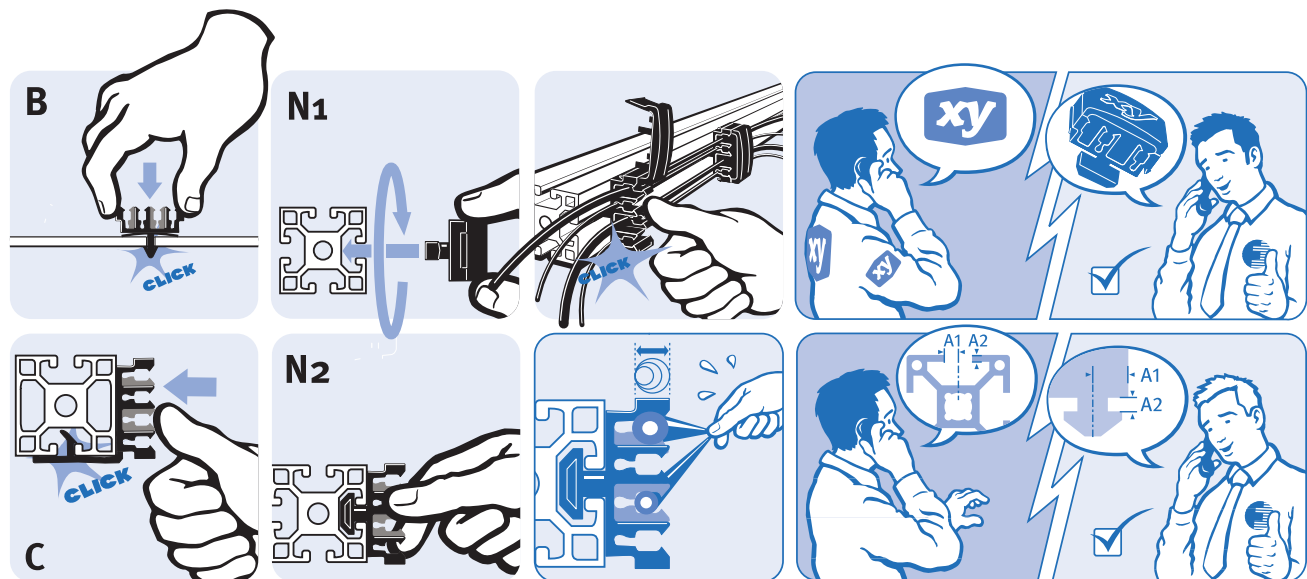
SNAP-CABLE-BINDING WITH HAMMER

Ausführung für Ø 5,0 - 7,6 mm Außendurchmesser
Beschreibung zur schnellen und sicheren Befestigung von Kabeln ohne Kabelbinder, mit Zugentlastung; Montage mittels einer Vierteldrehung in der Nut oder durch Einstecken
Material Kunststoff PA
Liefereinheit 100 Stück

Model For Ø 5.0 - 7.6 mm outside diameter
Description To attach of cables securely and quick and without cable ties, with strain relief; can be mounted into the slot by a quarter turn or by snapping in
Material Plastic PA
Pack Quantity 100 pieces



Abdeckkappe Cover Cap	Bohrung Hole	Steck-Kabelbinder Snap-cable-binding	A1 [mm]	A2 (Profil) [mm] A2 (Profile) [mm]	N	Gewicht [g] Weight [g]	Profil Profile	Teil-Nr Part#
ohne Without		(N) Hammer für Nut (N) Hammer for slot	8.0	4.4 (4.5)	8	10.8	I	093611N08
		(N) Hammer für Nut (N) Hammer for slot	10.0	5.7 (6.0)	10	10.4	B	093610N10
	Ø 6.0 +0.3	(B) Steckhammer für Loch (B) Snap-hammer for hole		0.7 - 3.0		10.7		093600B06
	Ø 8.0 +0.3	(B) Steckhammer für Loch (B) Snap-hammer for hole		0.7 - 3.0		11.7		093600B08
mit With		(N) Hammer für Nut (N) Hammer for slot	8.0	4.4 (4.5)	8	10.8	I	093611AN08
		(N) Hammer für Nut (N) Hammer for slot	10.0	5.7 (6.0)	10	10.4	B	093610AN10
	Ø 6.0 +0.3	(B) Steckhammer für Loch (B) Snap-hammer for hole		0.7 - 3.0		10.7		093600AB06
	Ø 8.0 +0.3	(B) Steckhammer für Loch (B) Snap-hammer for hole		0.7 - 3.0		11.7		093600AB08



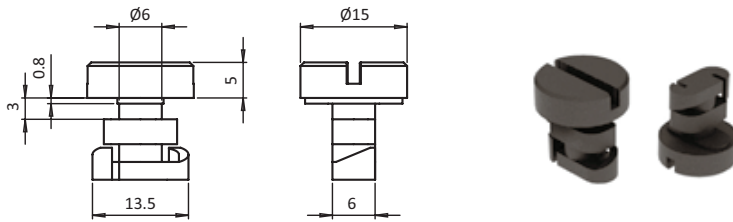


SCHNELLVERBINDER

QUICK CONNECTOR

Ausführung für Kabelkanäle
Beschreibung zur Befestigung von Kabelkanälen an Aluminiumprofilen
Material Kunststoff PA, glasfaserverstärkt
Farbe schwarz
Liefereinheit 100 Stück

Model For cable ducts
Description To fasten cable ducts to aluminum profiles
Material Plastic PA, glass fiber reinforced
Color Black
Pack Quantity 100 pieces



Schnellverbinder Quick Connector	N	Gewicht [g] Weight [g]	Profil Profile	Teil-Nr. Part #
	10	3.0	B	093QFN10

