

HORIZONTAL TRANSPORT OF PLATES: MATERIALS WHICH CANNOT BE DAMAGED

IPHNM

NEW



Model IPHNM

The IPHNM safety lifting clamps (NM stands for non marring) can be used in almost all sectors of industry where during lifting or transfer **no damage** to the material is permitted.

The jaws of the lifting clamp are made of a - synthetic material - with a very high coefficient of friction so that damageable plates can be held firmly, and transferred in either a vertical or horizontal position.

This also applies for **materials with a very smooth surface, composites and coated plates or plates with a very hard (impenetrable) surface.**



Model IPHNM

Before using the clamp always read the instruction manual supplied with the clamp.

Model	Order No.	WLL per pair in t.	Jaw	Dimensions in mm									Weight per pair kg	
				A	B	C	D	E	F	G	H	J		K
0,5-IPHNM	3287	0,5	0-20	-	-	-	-	-	-	-	-	-	-	4,0
1 -IPHNM	3288	1,0	0-35	-	-	-	-	-	-	-	-	-	-	7,0
2 -IPHNM	3289	2,0	0-60	-	-	-	-	-	-	-	-	-	-	10,0



AVAILABLE MID 2006

innovative

HORIZONTAL TRANSPORT OF PLATES: ALSO WITH SAGGING

IPHOZ



Model IPHOZ

Horizontal safety lifting clamp IPHOZ is suitable for the lifting and transfer of sagging or bending plates in horizontal position.

Very light-weight construction.

The maximum top-angle is 60° when using IPHOZ clamps.

The IPHOZ lifting clamps can also be applied in combination with **long chains or two-leg slings**.

For correct use of the clamp, please consult fig. 2 & 3.

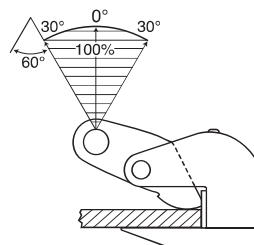
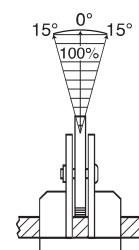
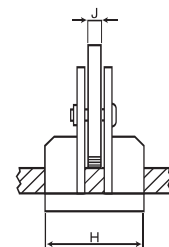
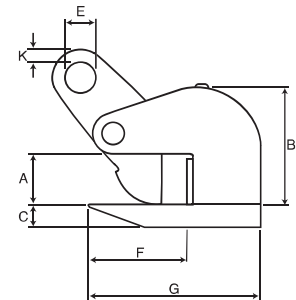
Higher WLL and different jaw-apertures upon request.



Model IPHOZ

Before using the clamp always read the instruction manual supplied with the clamp.

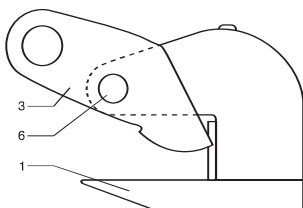
Model	Order No.	WLL per pair in t.	Jaw	Dimensions in mm									Weight per pair kg
				A	B	C	D	E	F	G	H	J	
0,75-IPHOZ	5401	0,75	0-30	94	16	-	16	70	118	81	12	12	6,0
1,5 -IPHOZ	5402	1,5	0-45	133	16	-	22	125	192	100	16	12	11,0
3 -IPHOZ	5403	3,0	0-45	137	20	-	26	125	200	120	20	10	16,0
4,5 -IPHOZ	5404	4,5	0-45	138	25	-	30	126	220	120	20	10	17,0
6 -IPHOZ	5405	6,0	0-60	171	30	-	36	135	235	130	20	20	31,0
9 -IPHOZ	5406	9,0	0-60	211	30	-	43	166	276	160	25	20	41,0
12 -IPHOZ	5407	12,0	0-60	217	40	-	47	168	294	190	25	19	76,0
15 -IPHOZ	5408	15,0	0-60	220	40	-	47	183	317	250	25	22	76,0



Spare parts for IPHOZ safety lifting clamps:

- 1. body complete 1041
- 3. camsegment complete 1234
- 6. camsegment shaft complete 1046

Order no.



HORIZONTAL TRANSPORT OF PLATES: WITH LOCKING DEVICE

IPHG(U)Z



Model IPHGZ

Horizontal safety lifting clamp IPHGZ is suitable for the lifting and transfer of steel plates (including sagging plates). The IPHGZ lifting clamp is fitted with a locking device for both open and closed positions, which ensures complete safety. These clamps are also suitable for working in conjunction with an angle bench, guillotine, round roller, etc.

Available in two versions:

1. **IPHGZ:** fitted with a fixed hoisting eye.
For correct use of the clamp, please consult fig. 2 and 3.
2. **IPHGUZ:** fitted with a fixed hoisting eye.
For correct use of the clamp, please consult fig. 4 and 5.

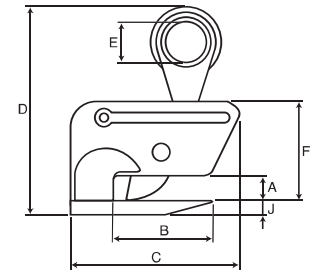
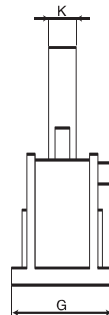
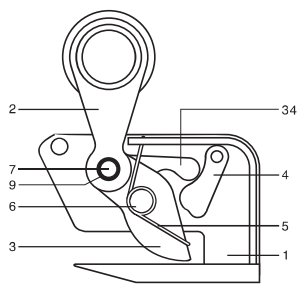
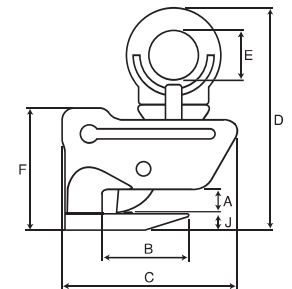


Model IPHGUZ

Higher WLL and different jaw-apertures upon request.

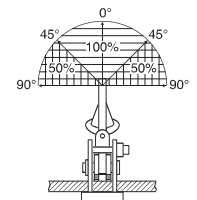
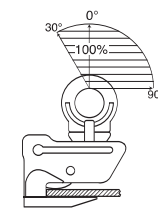
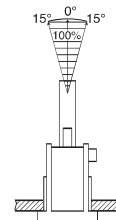
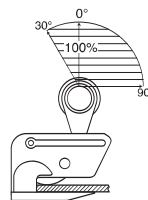
Before using the clamp always read the instruction manual supplied with the clamp.

Model	Order No.	WLL per pce in t.	Jaw		Dimensions in mm								Weight per pce kg
			A	B	C	D	E	F	G	H	J	K	
0,75-IPHGZ	5451	0,75	0-25	82	148	206	50	99	98	-	12	22	4,0
1,5 -IPHGZ	5452	1,5	0-25	110	200	250	50	118	90	-	20	28	7,3
3 -IPHGZ	5453	3,0	0-40	120	227	305	70	148	120	-	25	32	12,3
4,5 -IPHGZ	5454	4,5	0-40	120	284	381	70	181	155	-	30	40	25,0
1,5 -IPHGUZ	5455	1,5	0-25	110	232	287	70	139	90	-	20	16	9,0



Spare parts for IPHG(U)Z safety lifting clamps:

- | | |
|------------------------------------|------|
| 1. body complete | 1041 |
| 2. universal hoisting eye complete | 1235 |
| 3. camsegment complete | 1234 |
| 4. latch complete | 1233 |
| 5. spring for latch complete | 1063 |
| 6. camsegment shaft complete | 1046 |
| 7. hoisting eye shaft complete | 1047 |
| 9. distance collar complete | 1337 |
| 10. pivot complete | 0098 |



HORIZONTAL TRANSPORT OF BEAMS: LIFTING CLAMPS/TACKLE-EYE CLAMP/LASHING CLAMP

IPTK
IPTKW



Model IPTK

Multipurpose safety lifting clamp for steel beams. IPTK is suitable for application as a lifting clamp, tackle-eye clamp and as a lashing clamp. Load carrying capacity up to 15° from the center line of the clamp. The IPTK clamp is fitted with a screwed spindle for attachment of the clamp to the beam.

Optional feature: special **offshore** version, model **IPTKO** (including 3.1 B certificate).

Also available: multipurpose beam clamp model **IPTKW without hoisting eye**. All other parts and functions of the IPTKW clamp are identical to those of the IPTK beam clamp.

For correct use of the clamp, please consult fig. 2.



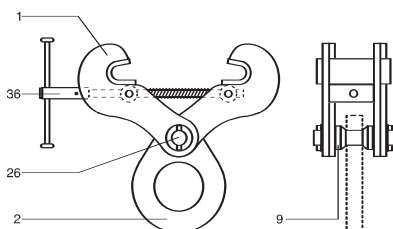
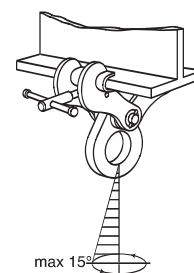
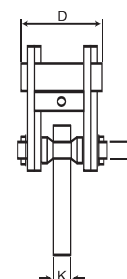
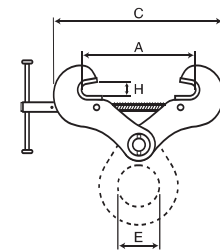
Model IPTK



Model IPTKW

Before using the clamp always read the instruction manual supplied with the clamp.

Model	Order No.	WLL per pce in t.	Jaw		Dimensions in mm								Weight per pce kg
			A	B	C	D	E	F	G	H	J	K	
2-IPTK	0996	2,0	75-190	-	A+ 80	125	75	-	-	25	-	20	6,0
3-IPTK	0997	3,0	75-190	-	A+ 80	125	75	-	-	25	-	20	6,5
4-IPTK	0998	4,0	150-280	-	A+100	125	75	-	-	35	-	20	8,5
5-IPTK	0994	5,0	120-350	-	A+195	125	75	-	-	43	-	20	11,0
2-IPTKW	0966	2,0	75-190	-	A+ 80	125	-	28	-	25	-	-	4,0
3-IPTKW	0967	3,0	75-190	-	A+ 80	125	-	28	-	25	-	-	4,5
4-IPTKW	0968	4,0	150-280	-	A+100	125	-	33	-	35	-	-	6,3
5-IPTKW	0969	5,0	120-350	-	A+195	125	-	33	-	43	-	-	8,8



- Spare parts for IPTK and IPTKW safety lifting clamps:**
- | | |
|---------------------------------|------|
| 1. body complete | 1041 |
| 2. hoisting eye complete (IPTK) | 1235 |
| 9. distance collar (IPTKW) | 1337 |
| 26. hingeshaft complete | 0232 |
| 36. screwed spindle complete | 1362 |

innovative

HORIZONTAL TRANSPORT OF BEAMS: TRANSFER AND STACKING

IPBHZ



Model IPBHZ

Safety lifting clamp IPBHZ is suitable for the lifting and transfer of steel beams and plates.

The IPBHZ lifting clamp is fitted with a locking device for both open and closed positions, which ensures complete safety. Also suitable for working in conjunction with an angle bench, guillotine, round roller, etc.

This clamp **can grip beams on flanges or at head-end.**

For correct use of the clamp, please consult fig. 2 & 3.

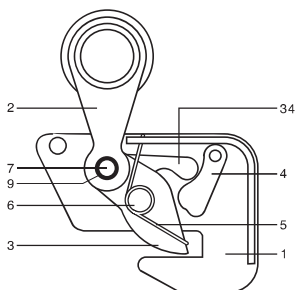
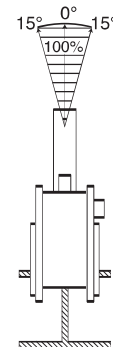
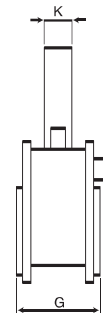
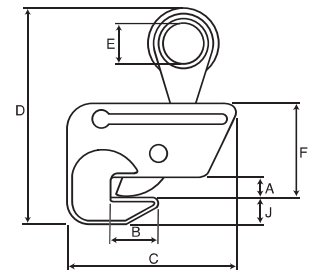
Higher WLL and different jaw-apertures upon request.



Model IPBHZ

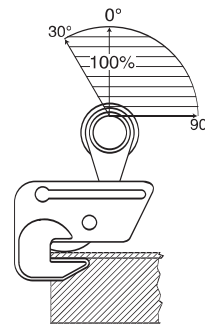
Before using the clamp always read the instruction manual supplied with the clamp.

Model	Order No.	WLL per pce in t.	Jaw		Dimensions in mm									Weight per pce kg
			A	B	C	D	E	F	G	H	J	K		
0,75-IPBHZ	5461	0,75	0-25	40	148	220	50	130	69	-	33	22	3,0	
1,5 -IPBHZ	5462	1,5	0-25	60	200	255	50	153	73	-	35	28	6,0	
3 -IPBHZ	5463	3,0	0-40	80	227	325	70	188	112	-	38	32	10,5	
4,5 -IPBHZ	5464	4,5	0-40	112	284	413	70	251	116	-	80	40	25,0	



Spare parts for IPBHZ safety lifting clamps:

	Order no.
1. body complete	1041
2. hoisting eye complete	1235
3. camsegment complete	1234
4. latch complete	1233
5. spring for latch complete	1063
6. camsegment shaft complete	1046
7. hoisting eye shaft complete	1047
9. distance collar complete	1337
34. latch plate complete	1353



innovative