



rtc[®]

COUPLING TECHNOLOGY

[www.rtc-tec.com](http://www rtc-tec.com)



106

rtc TYPE

NEW DESIGN!
SINGLE & DOUBLE Shut-Off!



Temperature Range - Temperaturbereich
 -20°C +100°C (-4°F +212°F) Nitril (N)

Working Pressure - Betriebsdruck

| | |
|-------------|------------------|
| rtc 106.25 | 10 bar (145 PSI) |
| rtc 106.33 | 10 bar (145 PSI) |
| rtc 106.42 | 10 bar (145 PSI) |
| rtc 106.50 | 10 bar (145 PSI) |
| rtc 106.63 | 10 bar (145 PSI) |
| rtc 106.110 | 10 bar (145 PSI) |

Flow size - Nennweiten

| | |
|-------------|--------|
| rtc 106.25 | 25 mm |
| rtc 106.33 | 33 mm |
| rtc 106.42 | 42 mm |
| rtc 106.50 | 50 mm |
| rtc 106.63 | 63 mm |
| rtc 106.110 | 110 mm |

Material

| | |
|---------------------------------------|--|
| Socket Body - Kupplungsgrundkörper | Brass chrome plated - Messing verchromt |
| Sleeve - Hülse | Brass chrome plated - Messing verchromt |
| Springs - Federn | Stainless Steel - Edelstahl |
| Locking Ring - Sprengring | Stainless Steel Edelstahl |
| Balls - Kugeln | Stainless Steel - Edelstahl |
| Seals - Dichtungen | Nitrile |
| Plug - Nippel | AISI 420 hardened - AISI 420 gehärtet |

Standard version - Standardversion

Brass - Messing
 NBR (N)

Options - Optionen

Stainless Steel - Edelstahl

Using Area

- On temperature regulation applications with hot or cold water, oil etc.
- Injection moulding industries.
- On steam line
- Suction coupling for material conveying (Plastic Granule Carrier Coupling)
- Full flow passage

Anwendungsbereiche

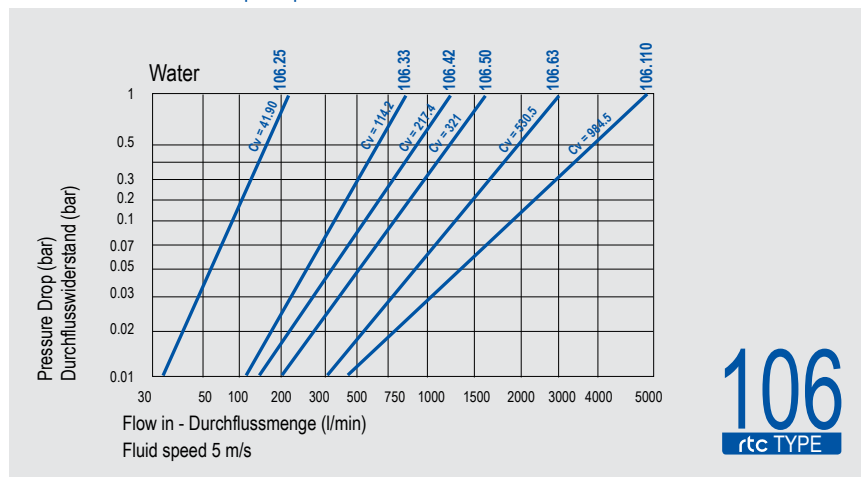
- Zuleitung für die Temperierung / Druckluft
- Kühlung mit Öl oder Wasser
- Kunststoffindustrie
- Dampfanwendungen
- Kupplung für Materialbeförderung (Kunststoffgranulat)
- Voller Durchgang

Material of 106.110

| | |
|---------------------------------------|-----------|
| Socket Body - Kupplungsgrundkörper | Aluminium |
| Sleeve - Hülse | Aluminium |
| Plug - Nippel | Aluminium |



Flow Rate vs Pressure Drop Graph / Durchflussrate vs Druckabfall



rtc TYPE 106

Cylindrical female thread socket / Kupplung mit Innengewinde zylindrisch



Socket / Kupplung

Size / Größe

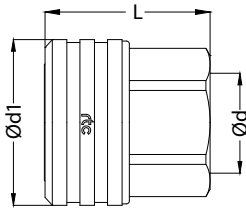
Order No / Bestellnr.

Ød

Ød1

L

HEX.



| | | | | | |
|-----|-----------------|-----------|-----|-----|----|
| 25 | 106.25 SFF 33 | BSP 1 | 54 | 57 | 41 |
| 33 | 106.33 SFF 42 | BSP 1-1/4 | 65 | 62 | 50 |
| 42 | 106.42 SFF 48 | BSP 1-1/2 | 78 | 66 | 60 |
| 50 | 106.50 SFF 60 | BSP 2 | 89 | 70 | 70 |
| 63 | 106.63 SFF 75 | BSP 2-1/2 | 109 | 84 | 90 |
| 110 | 106.110 SFF 113 | BSP 4 | 180 | 175 | - |

rtc TYPE 106

Cylindrical female thread socket with valve / Verschlusskupplung mit Innengewinde zylindrisch



Socket / Kupplung

Size / Größe

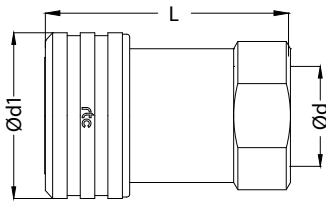
Order No / Bestellnr.

Ød

Ød1

L

HEX.



Double Shut-off

| | | | | | |
|----|---------------|-----------|----|-----|----|
| 25 | 106.25 SFB 33 | BSP 1 | 57 | 87 | 41 |
| 33 | 106.33 SFB 42 | BSP 1-1/4 | 65 | 103 | 60 |

rtc TYPE 106

Cylindrical male thread socket / Kupplung mit Außengewinde zylindrisch



Socket / Kupplung

Size / Größe

Order No / Bestellnr.

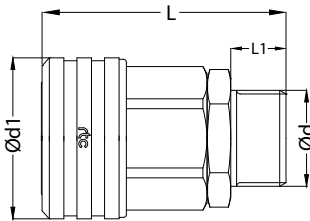
Ød

Ød1

L

L1

HEX.



| | | | | | | |
|----|---------------|-----------|-----|-----|----|----|
| 25 | 106.25 SMF 33 | BSP 1 | 54 | 84 | 19 | 41 |
| 33 | 106.33 SMF 42 | BSP 1-1/4 | 65 | 91 | 19 | 50 |
| 42 | 106.42 SMF 48 | BSP 1-1/2 | 78 | 98 | 20 | 60 |
| 50 | 106.50 SMF 60 | BSP 2 | 89 | 110 | 25 | 70 |
| 63 | 106.63 SMF 75 | BSP 2-1/2 | 109 | 131 | 27 | 90 |

rtc TYPE 106

Standard hose tail socket / Kupplung mit gerader Standard - Schlauchtülle



Socket / Kupplung

Size / Größe

Order No / Bestellnr.

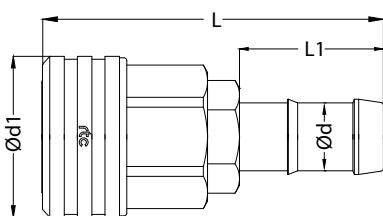
Ød

Ød1

L

L1

HEX.



| | | | | | | |
|----|-------------------|-------|-----|-----|----|----|
| 25 | 106.25 SHF 25 HT8 | 25 mm | 54 | 117 | 50 | 41 |
| 25 | 106.25 SHF 32 HT8 | 32 mm | 54 | 117 | 50 | 41 |
| 33 | 106.33 SHF 32 HT8 | 32 mm | 65 | 122 | 50 | 50 |
| 33 | 106.33 SHF 38 HT8 | 38 mm | 65 | 122 | 50 | 50 |
| 42 | 106.42 SHF 44 HT8 | 44 mm | 78 | 126 | 50 | 60 |
| 50 | 106.50 SHF 50 HT8 | 50 mm | 89 | 149 | 50 | 70 |
| 63 | 106.63 SHF 63 HT8 | 63 mm | 109 | 179 | 75 | 90 |

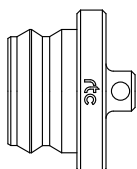
rtc TYPE 106

Dust cup for socket / Staubkappe für Kupplung

Dust cup / Staubkappe

Size
Größe

Order No / Bestellnr.



| | |
|-----|---------------|
| 25 | 106.25 SD 00 |
| 33 | 106.33 SD 00 |
| 42 | 106.42 SD 00 |
| 50 | 106.50 SD 00 |
| 63 | 106.63 SD 00 |
| 110 | 106.110 SD 00 |



Cylindrical female thread plug / Nippel mit Innengewinde zylindrisch

TYPE 106 **rtc**

| Plug / Nippel | Size / Größe | Order No / Bestellnr. | Ød | Ød1 | L | HEX. |
|---------------|--------------|-----------------------|-----------|-----|-----|------|
| | 25 | 106.25 PFF 33 | BSP 1 | 45 | 61 | 41 |
| | 33 | 106.33 PFF 42 | BSP 1-1/4 | 55 | 66 | 50 |
| | 42 | 106.42 PFF 48 | BSP 1-1/2 | 65 | 74 | 60 |
| | 50 | 106.50 PFF 60 | BSP 2 | 75 | 78 | 71 |
| | 63 | 106.63 PFF 75 | BSP 2-1/2 | 90 | 83 | 84 |
| | 110 | 106.110 PFF 113 | BSP 4 | 150 | 155 | - |



Cylindrical female thread plug with valve/ Verschlussnippel mit Innengewinde zylindrisch

TYPE 106 **rtc**

| Plug / Nippel | Size / Größe | Order No / Bestellnr. | Ød | Ød1 | L | HEX. |
|---------------|--------------|-----------------------|-----------|-----|-----|------|
| | 25 | 106.25 PFB 33 | BSP 1 | 45 | 88 | 41 |
| | 33 | 106.33 PFB 42 | BSP 1-1/4 | 64 | 105 | 55 |

Double Shut-off



Cylindrical male thread plug / Nippel mit Ausengewinde zylindrisch

TYPE 106 **rtc**

| Plug / Nippel | Size / Größe | Order No / Bestellnr. | Ød | Ød1 | L | L1 | HEX. |
|---------------|--------------|-----------------------|-----------|-----|-----|----|------|
| | 25 | 106.25 PMF 33 | BSP 1 | 45 | 88 | 19 | 41 |
| | 33 | 106.33 PMF 42 | BSP 1-1/4 | 55 | 95 | 19 | 50 |
| | 42 | 106.42 PMF 48 | BSP 1-1/2 | 65 | 106 | 20 | 60 |
| | 50 | 106.50 PMF 60 | BSP 2 | 75 | 118 | 25 | 71 |
| | 63 | 106.63 PMF 75 | BSP 2-1/2 | 90 | 130 | 27 | 84 |



Standard hose tail plug / Nippel mit gerader Standard - Schlauchtülle

TYPE 106 **rtc**

| Plug / Nippel | Size / Größe | Order No / Bestellnr. | Ød | Ød1 | L | L1 | HEX. |
|---------------|--------------|-----------------------|-------|-----|-----|----|------|
| | 25 | 106.25 PHF 25 HT8 | 25 mm | 45 | 122 | 50 | 41 |
| | 25 | 106.25 PHF 32 HT8 | 32 mm | 45 | 122 | 50 | 41 |
| | 33 | 106.33 PHF 32 HT8 | 32 mm | 55 | 127 | 50 | 50 |
| | 33 | 106.33 PHF 38 HT8 | 38 mm | 55 | 127 | 50 | 50 |
| | 42 | 106.42 PHF 44 HT8 | 44 mm | 65 | 131 | 50 | 60 |
| | 50 | 106.50 PHF 52 HT8 | 52 mm | 75 | 149 | 50 | 71 |
| | 63 | 106.63 PHF 63 HT8 | 63 mm | 90 | 178 | 75 | 84 |

