

16
+
28

CONNECTING ELEMENTS 16<->28



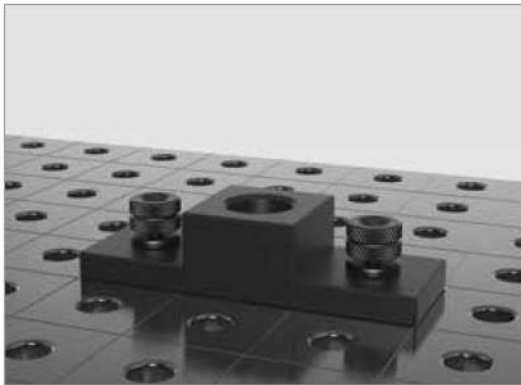
| | Page |
|---|------|
| Adapter Plate / Combination Fast Clamping Bolt 28 -> 16 | 418 |
| Reduction Bushing | 420 |
| Connecting Bolt / Adapter Sleeve | 422 |



Adapter Plate 28 -> 16

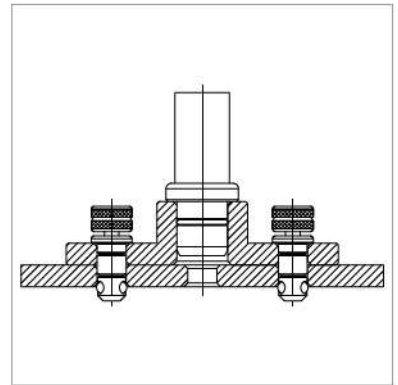


000570



Description:

Adapter Plate, especially developed in order to fasten 28 mm screw clamps on 16 mm tables. The Plate is fixed onto the table using clamping bolts. The 28 mm hole located in the center is used to quickly and safely fasten the screw clamp.



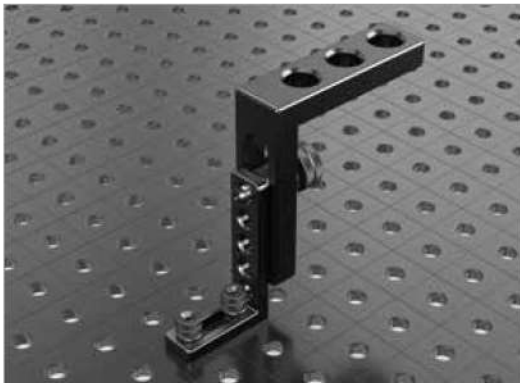
| Adapter Plate 28 -> 16 - Burnished | Length: (a) | Width: (b) | Height: (c) | Weight: | Item No. |
|---------------------------------------|-------------|------------|-------------|---------|------------|
| | 150 mm | 50 mm | 35 mm | 0,94 kg | 2-000570 ● |

● = Stock item / ○ = Item is made to order

Combination Fast Clamping Bolt 28 -> 16



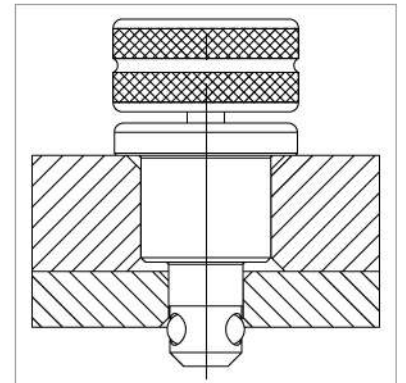
000520



Description:

Combination Fast Clamping Bolt, developed specifically to bolt system 28 components to system 16 welding tables. The ball size and clamping force correspond with 16 mm fast clamping bolts. The fourth ball located in the center reduces internal friction and increases the force of the handwheel. The new design of the Fast Clamping Bolt dispenses with the O-rings, however it is still easy to clean.

This Bolt is NOT approved for combining tables and U-shaped squares!



| | Length: (a) | Ø: (o) | Weight: | SK: | AM: | ZK: | Item No. |
|---|-------------|--------|---------|----------|----------|----------|------------|
| Combination Fast Clamping Bolt 28 -> 16 short - Burnished | 75 mm | 40 mm | 0,32 kg | 55,00 kN | 10,00 Nm | 10,00 kN | 2-000520 ● |

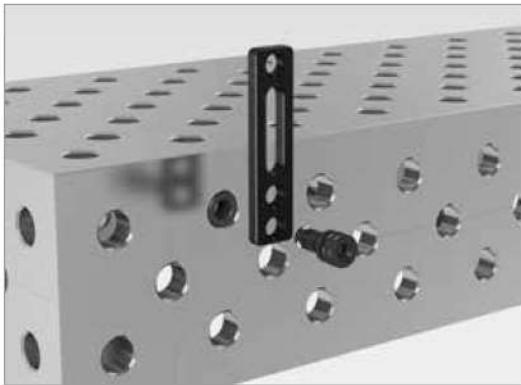
SK=Shearing Force; AM=Tightening Torque; ZK=Tensile Force;

● = Stock item / ○ = Item is made to order

Reduction Bushing 16 -> 28

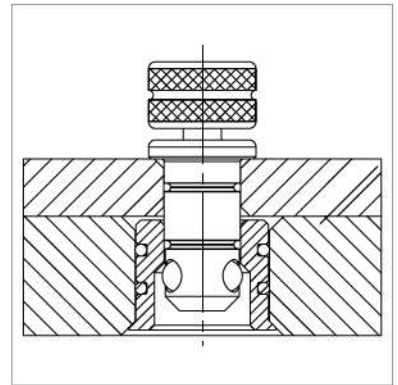


000545



Description:

Reduction Bushing 16 -> 28, especially developed for clamping of 16 mm components onto 28 mm tables. Using a 16 mm bolt, the Reducing Bushing is mounted on a 28 mm table, thereby giving the option to bolt a 16 mm clamping element. The Reducing Bushing is suited for 28 mm bore holes, but not for 28 mm oblong slots.



| | Length: (a) | Ø: (o) | Weight: | Item No. |
|---|-------------|--------|---------|------------|
| Reduction Bushing 16 -> 28 - Burnished | 23 mm | 32 mm | 0,05 kg | 2-000545 ● |

● = Stock item / ○ = Item is made to order

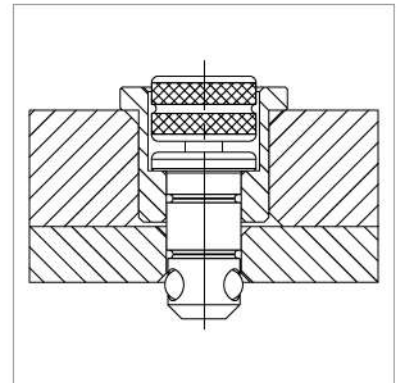
Reduction Bushing 28 -> 16

Description:

Reduction Bushing 28 -> 16, especially developed for clamping of 28 mm components onto system 16 tables. It is mounted onto a system 28 element, thereby giving the option to use a 16 mm clamp. They are suitable for both 28 mm bore holes as well as 28 mm oblong slots.



000546



| Height: (c) | Ø: (o) | Weight: | Item No. |
|-------------|--------|---------|------------|
| 29 mm | 36 mm | 0,07 kg | 2-000546 ● |

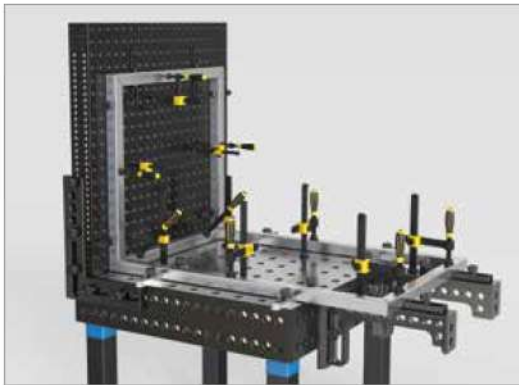
Reduction Bushing 28 -> 16
- Burnished

● = Stock item / ○ = Item is made to order

Connecting Bolt 28 <-> 16

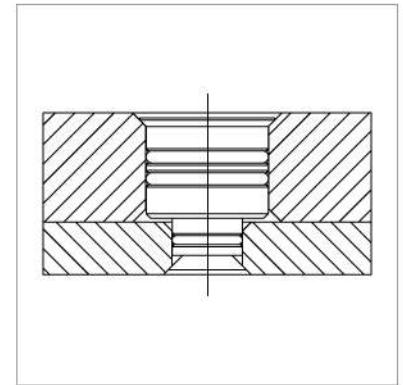


000562



Description:

Connecting Bolt, especially designed to connect 16 mm and 28 mm tables. All 16 mm and 28 mm components can be interconnected using the system bore holes.



Connecting Bolt 28 <-> 16
- Burnished

| Height: (c) | Ø: (o) | Weight: | Item No. |
|-------------|--------|---------|------------|
| 33 mm | 33 mm | 0,12 kg | 2-000562 ● |

● = Stock item / ○ = Item is made to order

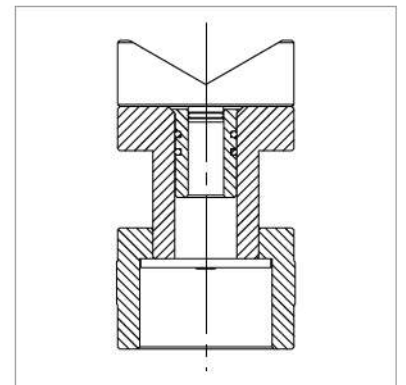
Adapter Sleeve 16 -> 28

Description:

Adapter Sleeve, especially developed to accommodate 16 mm components in 28 mm system bore holes (not suitable for clamping with clamping bolts). 16 mm components can also be used when Adapter Sleeve (Item No. 280822) is installed into screw bases.



000547



Adapter Sleeve 16 -> 28
- Burnished

| Length: (a) | Ø: (o) | Weight: | Item No. |
|-------------|--------|---------|------------|
| 40 mm | 31 mm | 0,12 kg | 2-000547 ● |

● = Stock item / ○ = Item is made to order