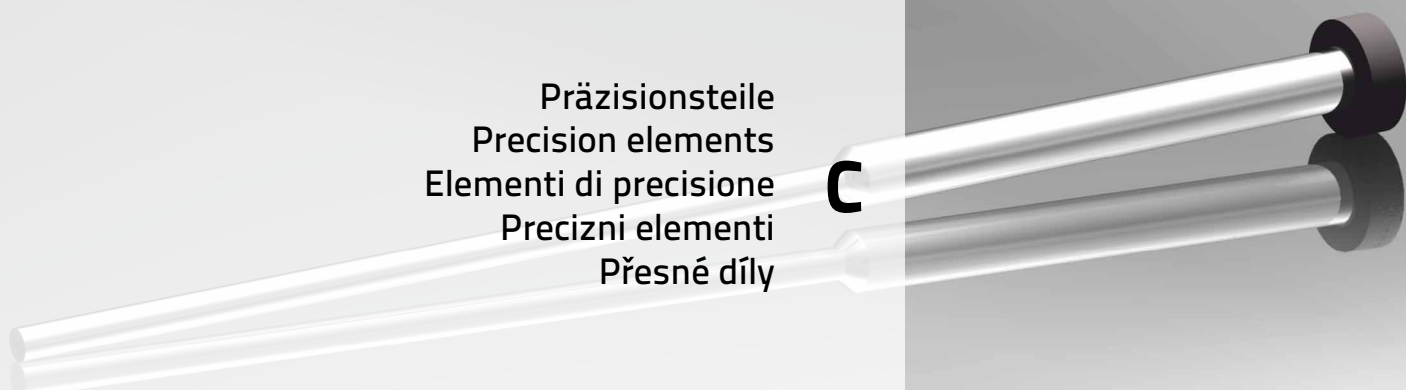




Präzisionsteile
Precision elements
Elementi di precisione
Precizni elementi
Přesné díly













C



- A** Platten
Plates
Piastre
Plošče
Desky
- B** Führungselemente
Guide elements
Elementi di guida
Vodilni elementi
Vodící díly
- D** Temperierelemente
Elements for heating
and cooling
Elementi di raffreddamento
Hladilni elementi
Díly pro temperaci a chlazení
- E** Federelemente
Springs & elastomers
Molle ed elastomeri
Vzmeti in elastomeri
Pružiny a elastomery
- F** Zubehör
Accessories
Accessori
Pripomočki
Příslušenství
- G** Info

C

**PRÄZISIONSTEILE / PRECISION ELEMENTS
ELEMENTI DI PRECISIONE / PRECIZNI ELEMENTI / PŘESNÉ DÍLY**

2300	DIN 1530/1 ISO 6751	23-1	2303	DIN 1530/2 ISO 8694	23-7
	<p>Auswerferstifte mit zylindrischem Kopf, blanknitriert Ejector pins with cylindrical head, clear nitrided Espulsori con testa cilindrica nitrurati Izmetači s cilindrično glavou, nitrirani Vyhazovače s válcovou hlavou, nitridované</p>			<p>Auswerferstifte mit zylindrischem Kopf, nitriert, abgesetzt Ejector pins with cylindrical head, nitrided, reduced shank Espulsori con testa cilindrica nitrurati ribassati Izmetači s cilindrično glavou, nitrirani, reducirani Vyhazovače s válcovou hlavou, nitridované, osazené</p>	
2300.1	DIN 1530/1 ISO 6751	23-2	2304	DIN 1530/2 ISO 8694	23-8
	<p>Auswerferstifte mit zylindrischem Kopf, nitriert, oxidiert Ejector pins with cylindrical head, nitrided and oxidized Espulsori con testa cilindrica nitrurati e ossidati Izmetači s cilindrično glavou, nitrirani in oksidirani Vyhazovače s válcovou hlavou, nitridované, oxidované</p>			<p>Auswerferstifte mit zylindrischem Kopf, gehärtet, abgesetzt Ejector pins with cylindrical head, hardened, reduced shank Espulsori con testa cilindrica temperati ribassati Izmetači s cilindrično glavou, kaljeni, reducirani Vyhazovače s válcovou hlavou, kalené, osazené</p>	
2300.2	DIN 1530/1 ISO 6751	23-3	2305	DIN 1530/4 ISO 8693	23-9
	<p>Auswerferstifte / Kernstifte, unnitriert Ejector pins with cylindrical head, not nitrided Espulsori con testa cilindrica non nitrurati Izmetači s cilindrično glavou, nenitrirani Vyhazovače nenitridované</p>			<p>Flachauswerferstifte, nitriert Blade ejector pins, nitrided Espulsori lamerari nitrurati Ploščati izmetači, nitrirani Ploché vyhazovače, nitridované</p>	
2300.3		23-4	2306	DIN 1530/4 ISO 8693	23-10
	<p>Formkernstifte Shaped core pins Anime Jedra Jádra</p>			<p>Flachauswerferstifte, gehärtet Blade ejector pins, hardened Espulsori lamerari temperati Ploščati izmetači, kaljeni Ploché vyhazovače, kalené</p>	
2301	DIN 1530/1 ISO 6751	23-5	2310	DIN16756 ISO8405	23-11
	<p>Auswerferstifte mit zylindrischem Kopf, gehärtet Ejector pins with cylindrical head, hardened Espulsori con testa cilindrica temperati Izmetači s cilindrično glavou, kaljeni Vyhazovače s válcovou hlavou, kalené</p>			<p>Auswerferhülsen, nitriert Ejector sleeves, nitrided Espulsori a canocchiale nitrurati Cevni izmetači, nitrirani Trubkové vyhazovače, nitridované</p>	
2302	DIN 1530/3	23-6	2311	DIN16756 ISO8405	23-12
	<p>Auswerferstifte mit kegeligem Kopf Ejector pins with conical head, hardened Espulsori con testa conica temperati Izmetači s konično glavou, kaljeni Vyhazovače s kuželovou hlavou, kalené</p>			<p>Auswerferhülsen, gehärtet Ejector sleeves, hardened Espulsori a canocchiale temperati Cevni izmetači, kaljeni Trubkové vyhazovače, kalené</p>	



C

PRÄZISIONSTEILE / PRECISION ELEMENTS ELEMENTI DI PRECISIONE / PRECIZNI ELEMENTI / PŘESNÉ DÍLY

INFO

23-14

2340.6 H

23-18



Anfrage und Bestellvorgabe
Request and order Form
Richiesta, ordine
Povpraševanje, naročilo
Poptávka, objednávka



Angußdüse 1,5°, mit Radius 15,5
Sprue bushes 1,5°, with radius 15,5
Ugelli di iniezione 1,5° con raggio 15,5
Dolivne šobe 1,5° z radiusem 15,5
Vtokové trysky 1,5°, s radiusem 15,5

2340.1 H

23-16

2340.7 H

23-19



Angußdüse 0,5°, ohne Radius
Sprue bushes 0,5°, without radius
Ugelli di iniezione 0,5° senza raggio
Dolivne šobe 0,5° brez radiusa
Vtokové trysky 0,5°, bez radiusu



Angußdüse 0,5°, mit Radius 40
Sprue bushes 0,5°, with radius 40
Ugelli di iniezione 0,5° con raggio 40
Dolivne šobe 0,5° z radiusem 40
Vtokové trysky 0,5°, s radiusem 40

2340.2 H

23-16

2340.8 H

23-19



Angußdüse 1°, ohne Radius
Sprue bushes 1°, without radius
Ugelli di iniezione 1° senza raggio
Dolivne šobe 1° brez radiusa
Vtokové trysky 1°, bez radiusu



Angußdüse 1°, mit Radius 40
Sprue bushes 1°, with radius 40
Ugelli di iniezione 1° con raggio 40
Dolivne šobe 1° z radiusem 40
Vtokové trysky 1°, s radiusem 40

2340.3 H

23-17

2340.9 H

23-20



Angußdüse 1,5°, ohne Radius
Sprue bushes 1,5°, without radius
Ugelli di iniezione 1,5° senza raggio
Dolivne šobe 1,5° brez radiusa
Vtokové trysky 1,5°, bez radiusu



Angußdüse 1,5°, mit Radius 40
Sprue bushes 1,5°, with radius 40
Ugelli di iniezione 1,5° con raggio 40
Dolivne šobe 1,5° z radiusem 40
Vtokové trysky 1,5°, s radiusem 40

2340.4 H

23-17

2341 H

23-20



Angußdüse 0,5°, mit Radius 15,5
Sprue bushes 0,5°, with radius 15,5
Ugelli di iniezione 0,5° con raggio 15,5
Dolivne šobe 0,5° z radiusem 15,5
Vtokové trysky 0,5°, s radiusem 15,5



Haltebuchse
Sprue puller inserts
Bussole strappamaterozza
Přidrževalne puše
Přidržovače vtoku

2340.5 H

23-18

2345.1 H

23-21



Angußdüse 1°, mit Radius 15,5
Sprue bushes 1°, with radius 15,5
Ugelli di iniezione 1° con raggio 15,5
Dolivne šobe 1° z radiusem 15,5
Vtokové trysky 1°, s radiusem 15,5



Zentrierflansch
Locating rings
Anelli di centraggio
Centrírni obroči
Centrážní kroužky

C

**PRÄZISIONSTEILE / PRECISION ELEMENTS
ELEMENTI DI PRECISIONE / PRECIZNI ELEMENTI / PŘESNÉ DÍLY**

2345.2 H

23-21



Zentrierflansch
Locating rings
Anelli di centraggio
Centrirni obroči
Centrážní kroužky

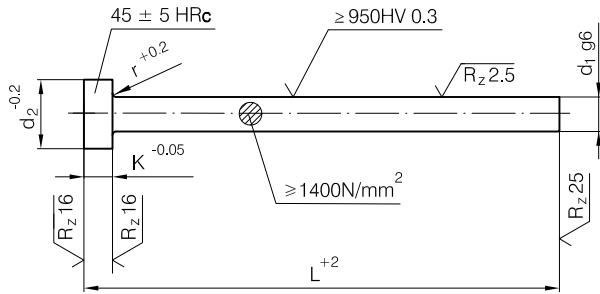
2345.3 H

23-22



Zentrierflansch
Locating rings
Anelli di centraggio
Centrirni obroči
Centrážní kroužky





Mat.: WAS - nitrided

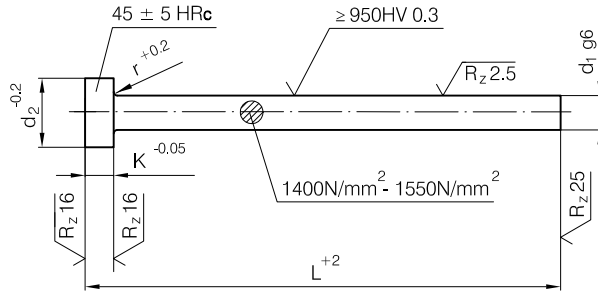
2300 - d₁ x L

K	d ₂	d ₁	L	
1,5	3	1,5	100	
			125	
			160	
2	4	2	100	
			125	
			160	
		2,2	200	
			250	
			250	
	5	2,5	100	
			125	
			160	
		2,5	200	
			250	
			315	
3	6	3	100	
			125	
			160	
			200	
			250	
			400	
		3,2	100	
			125	
			160	
			200	
			250	
			315	
	7	3,5	3,5	100
				125
				160
			200	250
				315
				400
		4	4	100
				125
				160
			250	200
				315
				400
8	4,2	4,2	100	
			125	
			160	
		200	250	
			315	
			400	
	4,5	4,5	100	
			125	
			160	
		200	250	
			315	
			400	
10	5	100		

K	d ₂	d ₁	L
3	10	5	125
			160
			200
		5,2	250
			315
			400
	5,5	5,5	100
			125
			160
		200	250
			315
			400
5	12	6	100
			125
			160
		200	250
			315
			400
	6,2	6,2	100
			125
			160
		200	250
			315
			400
5	12	6,5	100
			125
			160
		200	250
			315
			400
	7	7	100
			125
			160
		200	250
			315
			400
8	8	100	
		125	
		160	
	200	250	
		315	
		400	
14	8	100	
		125	
		160	
	200	250	
		315	
		400	

K	d ₂	d ₁	L
5	14	8	315
			400
			500
		8,2	630
			800
			800
	8,5	8,5	100
			125
			160
		200	250
			315
			400
5	16	9	100
			125
			160
		200	250
			315
			400
	10	10	100
			125
			160
		200	250
			315
			400
10,2	10,2	100	
		125	
		160	
	200	250	
		315	
		400	
10,5	10,5	100	
		125	
		160	
	200	250	
		315	
		400	
11,0	11,0	100	
		125	
		160	
	200	250	
		315	
		400	

K	d ₂	d ₁	L	
5	16	11	250	
			315	
			400	
		500	630	
			630	
			630	
	7	18	12	100
				125
				160
			200	250
				315
				400
12,5		12,5	100	
			125	
			160	
		200	250	
			315	
			400	
7	22	14	100	
			125	
			160	
		200	250	
			315	
			400	
	16	16	100	
			125	
			160	
		200	250	
			315	
			400	
7	22	14	100	
			125	
			160	
		200	250	
			315	
			400	
	16	16	100	
			125	
			160	
		200	250	
			315	
			400	
7	22	14	100	
			125	
			160	
		200	250	
			315	
			400	
	16	16	100	
			125	
			160	
		200	250	
			315	
			400	
7	22	14	100	
			125	
			160	
		200	250	
			315	
			400	
	16	16	100	
			125	
			160	
		200	250	
			315	
			400	
7	22	14	100	
			125	
			160	
		200	250	
			315	
			400	
	16	16	100	
			125	
			160	
		200	250	
			315	
			400	
7	22	14	100	
			125	
			160	
		200	250	
			315	
			400	
	16	16	100	
			125	
			160	
		200	250	
			315	
			400	
7	22	14	100	
			125	
			160	
		200	250	
			315	
			400	
	16	16	100	
			125	
			160	
		200	250	
			315	
			400	
7	22	14	100	
			125	
			160	
		200	250	
			315	
			400	
	16	16	100	
			125	
			160	
		200	250	
			315	
			400	
7	22	14	100	
			125	
			160	
		200	250	
			315	
			400	
	16	16	100	
			125	
			160	
		200	250	
			315	
			400	
7	22	14	100	
			125	
			160	
		200	250	
			315	
			400	
	16	16	100	
			125	
			160	
		200	250	
			315	
			400	
7	22	14	100	
			125	
			160	
		200	250	
			315	
			400	
	16	16	100	
			125	
			160	
		200	250	
			315	
			400	
7	22	14	100	
			125	
			160	
		200	250	
			315	
			400	
	16	16	100	
			125	
			160	
		200	250	
			315	
			400	
7	22	14	100	
			125	
			160	
		200	250	
			315	
			400	
	16	16	100	
			125	
			160	
		200	250	
			315	
			400	
7	22	14	100	
			125	
			160	
		200	250	
			315	
			400	
	16	16	100	
			125	
			160	
		200	250	
			315	
			400	
7	22	14	100	
			125	
			160	
		200	250	
			315	
			400	
	16	16	100	
			125	
			160	
		200	250	
			315	
			400	
7	22	14	100	
			125	
			160	
		200	250	
			315	
			400	
	16	16	100	
			125	
			160	
		200	250	
			315	
			400	
7	22	14	100	
			125	
			160	
		200	250	
			315	
			400	
	16	16	100	
			125	
			160	
		200	250	
			315	
			400	
7	22	14	100	
			125	
			160	
		200	250	
			315	
			400	
	16	16	100	
			125	
			160	
		200	250	
			315	
			400	
7	22	14	100	
			125	
			160	
		200	250	
			315	
			400	
	16	16	100	
			125	
			160	
		200	250	
			315	
			400	
7	22	14	100	
			125	
			160	
		200	250	
			315	
			400	
	16	16	100	
			125	
			160	
		200	250	
			315	
			400	
7	22	14	100	
			125	
			160	
		200	250	
			315	
			400	
	16	16	100	
			125	
			160	
		200	250	
			315	
			400	
7	22	14	100	
			125	
			160	
		200	250	
			315	
			400	
	16	16	100	
			125	
			160	
		200	250	
			315	
			400	
7	22	14	100	
			125	
			160	
		200	250	
			315	
			400	
	16	16	100	
			125	
			160	
		200	250	
			315	
			400	
7	22	14	100	
			125	
			160	
		200	250	
			315	
			400	
	16	16	100	
			125	
			160	
		200	250	
			315	
			400	
7	22	14	100	
			125	
			160	
		200	250	
			315	
			400	
	16	16	100	
			125	
			160	
		200	250	
			315	
			400	
7	22	14	100	
			125	
			160	
		200	250	
			315	
			400	
	16	16	100	
			125	
			160	
		200	250	
			315	
			400	
7	22	14	100	
			125	
			160	
		200	250	
			315	
			400	
	16	16	100	
			125	
			160	
		200	250	
			315	
			400	
7	22	14	100	
			125	
			160	
		200	250	
			315	
			400	
	16	16	100	
			125	
			160	
		200	250	
			315	
			400	
7	22	14	100	
			125	
			160	
		200	250	
			315	
			400	



Mat.: WAS - nitrided and oxidized

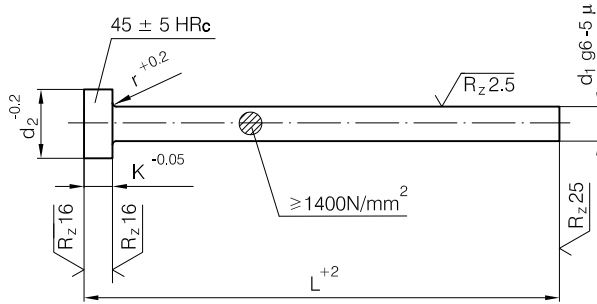
2300.1 - d₁ x L

K	d ₂	d ₁	L		
1,5	3	1,5	100		
			125		
			160		
			200		
			250		
2	4	2	100		
			125		
			160		
			200		
			250		
	4	2,2	10	100	
				125	
				160	
				200	
				250	
	5	2,5	10	100	
				125	
				160	
				200	
				250	
3	6	3	100		
			125		
			160		
			200		
			250		
		3,2	12	5	100
					125
					160
					200
					250
	7	3,5	12	100	
				125	
				160	
				200	
				250	
		4	14	8	100
					125
					160
					200
					250
	8	4,2	14	100	
				125	
				160	
				200	
				250	
		4,5	16	10,2	100
					125
					160
					200
					250
10	5	5	100		
			125		
			160		
			200		
			250		

K	d ₂	d ₁	L		
3	10	5	125		
			160		
			200		
			250		
			315		
		5,2	14	8	100
					125
					160
					200
					250
		5,5	16	10,2	100
					125
					160
					200
					250
5	12	6	100		
			125		
			160		
			200		
			250		
		6,2	14	8	100
					125
					160
					200
					250
	6,5	16	10,2	100	
				125	
				160	
				200	
				250	
14	14	8	100		
			125		
			160		
			200		
			250		

K	d ₂	d ₁	L		
5	16	8	315		
			400		
			500		
			630		
			800		
		8,2	18	11	100
					125
					160
					200
					250
		8,5	22	16	100
					125
					160
					200
					250
7	22	9	100		
			125		
			160		
			200		
			250		
		10	24	18	100
					125
					160
					200
					250
	10,2	26	20	100	
				125	
				160	
				200	
				250	
10,5	32	25	100		
			125		
			160		
			200		
			250		
11,0	32	25	100		
			125		
			160		
			200		
			250		

K	d ₂	d ₁	L		
7	22	14	100		
			125		
			160		
			200		
			250		
		16	24	18	100
					125
					160
					200
					250
	8	26	20	100	
				125	
				160	
				200	
				250	
10	32	25	100		
			125		
			160		
			200		
			250		



Mat.: WAS - not nitrided

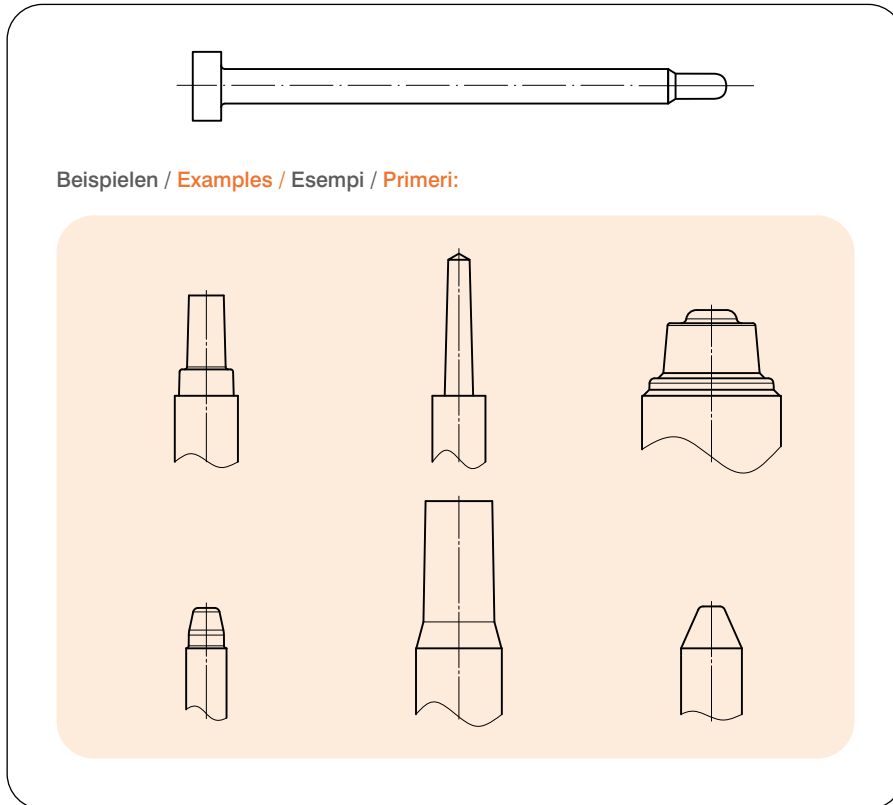
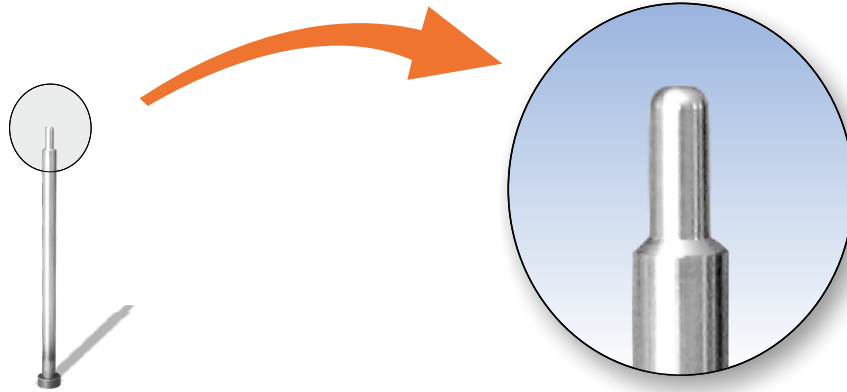
2300.2 - $d_1 \times L$

K	d_2	d_1	L		
1,5	3	1,5	100		
			125		
			160		
			200		
			250		
2	4	2	100		
			125		
			160		
			200		
			250		
	4	2,2	10	100	
				125	
				160	
				200	
				250	
	5	2,5	10	100	
				125	
				160	
				200	
				250	
3	6	3	100		
			125		
			160		
			200		
			250		
		3,2	12	5	100
					125
					160
					200
					250
	7	3,5	12	100	
				125	
				160	
				200	
				250	
		4	14	8	100
					125
					160
					200
					250
	8	4,2	14	100	
				125	
				160	
				200	
				250	
		4,5	16	10	100
					125
					160
					200
					250
10	5	20	100		
			125		
			160		
			200		
			250		

K	d_2	d_1	L		
3	10	5	125		
			160		
			200		
			250		
			315		
		5,2	14	8	100
					125
					160
					200
					250
	5,5	16	10	100	
				125	
				160	
				200	
				250	
5	12	6	100		
			125		
			160		
			200		
			250		
		6,2	16	10	100
					125
					160
					200
					250
	6,5	18	12	100	
				125	
				160	
				200	
				250	
14	8	20	100		
			125		
			160		
			200		
			250		
	8	24	16	100	
				125	
				160	
				200	
				250	

K	d_2	d_1	L		
5	14	8	315		
			400		
			500		
			630		
			800		
		8,2	18	11	100
					125
					160
					200
					250
	8,5	22	14	100	
				125	
				160	
				200	
				250	
9	26	16	100		
			125		
			160		
			200		
			250		
16	10	24	100		
			125		
			160		
			200		
			250		
	10,2	30	20	100	
				125	
				160	
				200	
				250	
10,5	36	25	100		
			125		
			160		
			200		
			250		
11,0	42	30	100		
			125		
			160		
			200		
			250		

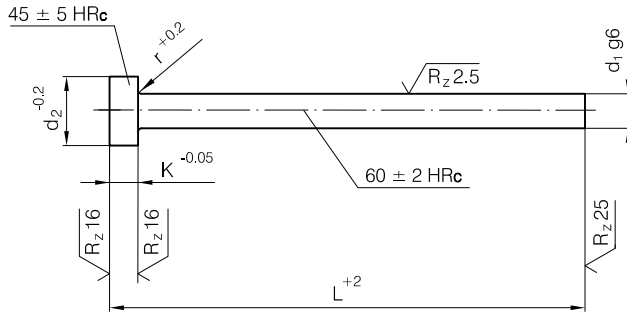
K	d_2	d_1	L		
7	18	11	250		
			315		
			400		
			500		
			630		
		12,5	24	18	100
					125
					160
					200
					250
	9	30	20	100	
				125	
				160	
				200	
				250	
10	36	25	100		
			125		
			160		
			200		
			250		



2300.3 - Form nach Zeichnung
2300.3 - shape according to the drawing
2300.3 - forma su disegno
2300.3 - oblika po risbi



Seite info-4
Page info-4
Pagina info-4
Glej stran info-4



Mat.: WS



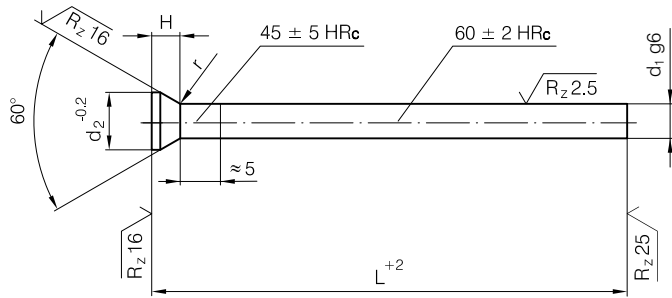
2301 - d₁ x L

K	d ₂	d ₁	L				
1.2	2	0,8	40				
			50				
			63				
			80				
			100				
			125				
		1	40				
			50				
			63				
			80				
			100				
			125				
	1,1	2	1,1	160			
				200			
				1,2	1,2	40	
						50	
						63	
						80	
		100					
		125					
		1,5	2,5	1,3	160		
					200		
					1,4	1,4	40
							50
63							
80							
100							
125							
3	1,5		1,5	160			
				200			
				250			
				315			
		40					
		1,6		40			

K	d ₂	d ₁	L					
1.5	3	1,6	50					
			63					
			80					
			100					
			125					
			160					
		1,7	3	1,7	200			
					250			
					1,8	3	1,8	40
								50
								63
								80
	100							
	125							
	2	4	2	160				
				200				
				250				
				2,2	4	2,2	100	
							125	
							160	
		200						
		250						
		315						
		5	2,5	2,5	63			
80								
100								
125								
160								
200								
3	6	3	63					
			80					
			100					

K	d ₂	d ₁	L					
3	7	3	125					
			160					
			200					
			250					
			3,2	7	3,2	100		
						125		
		160						
		200						
		250						
		3,5				7	3,5	100
			125					
			160					
	200							
	250							
	8		3	4	63			
		80						
		100						
		125						
		160						
		200						
		4,2	8	4,2	250			
					315			
					4,5	8	4,5	100
								125
160								
200								
250								
315								
10	5	5	63					
			80					
			100					
			125					
			160					
			200					
	5,2	10	5,2	250				
				315				
				5,5	10	5,5	100	
							125	
							160	
							200	
250								
315								
5	12	6	63					
			80					

K	d ₂	d ₁	L			
5	12	6	100			
			125			
			160			
			200			
			250			
			315			
		6,2	12	6,2	100	
					125	
					160	
					200	
					250	
					315	
	14	5	6,5	100		
				125		
				160		
				200		
				250		
				315		
		8	14	8	63	
					80	
					100	
					125	
					160	
					200	
8,2	14	8,2	250			
			315			
			10	16	10	100
						125
						160
						200
250						
315						
10,2	16	10,2	100			
			125			
			160			
			200			
			250			
			315			
7	18	12	80			
			100			
			125			
			160			
			200			
			250			
	12	18	12	315		
				40		



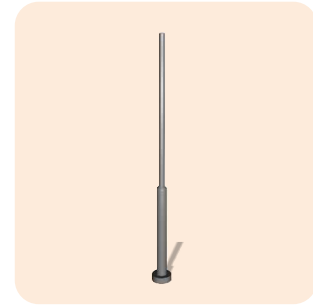
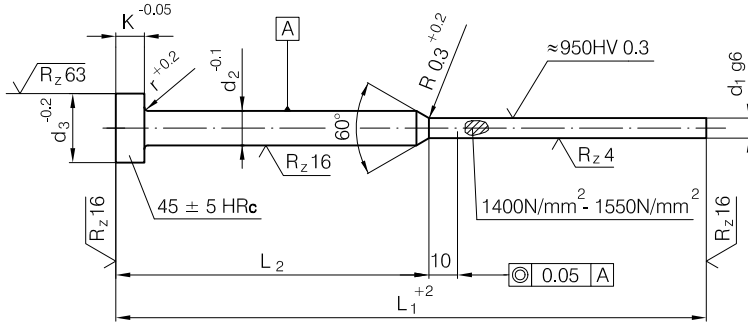
Mat.: WS

2302 - d₁ x L

H	d ₂	d ₁	L
1,19	1,8	1	63
			80
			100
	2	1,2	125
			160
			200
1,11	2,2	1,5	80
			100
			125
	2,5	1,6	160
			200
			250
1,37	3	2	63
			80
			100
	3,2	2,2	125
			160
			200
	3,5	2,5	250
			315
			350
1,8	4,5	3	63
			80
			100
	6,5	5,1	125
			160
			200

H	d ₂	d ₁	L
1,8	4,5	3	200
			250
1,71	5	3,5	100
			125
			160
	5,5	4	200
			250
			315
1,71	6	4,5	63
			80
			100
	6,5	5	125
			160
			200
1,71	6,5	5,1	100
			125
			160

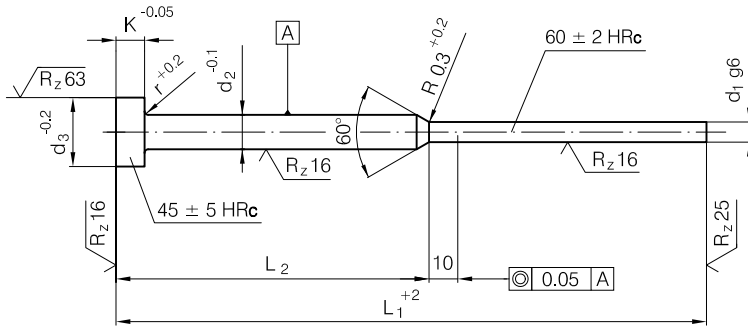
H	d ₂	d ₁	L
1,8	7	5,5	80
			100
			125
			160
			200
			250
2,23	8	6	63
			80
			100
			125
			160
			200
3,17	9	6,5	100
			125
			160
			200
			250
			315
2,73	10	8	63
			80
			100
			125
			160
			200
	12	10	63
			80
			100
			125
			160
			200
14	12	80	
		100	
		125	
		160	
		200	
		250	



Mat.: WAS - nitrided

2303 - d₁ x L₁

H	L ₂	d ₃	d ₂	d ₁	L ₁	H	L ₂	d ₃	d ₂	d ₁	L ₁
2	32	4	2	0,8	80	3	6	3	3	1,6	100
	50				125						
	63				160						
	80				200						
	0,9			32	80						
				50	100						
				63	125						
	1			80	160						
				1,1	32					80	
					50					100	
					63					125	
				1,2	80					160	
					1,3					32	80
	50									100	
	63			125							
	1,4			80	160						
				1,5	32					80	
					50					100	
63		125									
1,6		80	160								
		2,2	32	80							
	50		100								
	63		125								
	2,5		80	160							
			3,2	32	80						
50				100							
63		125									
80		160									
200											

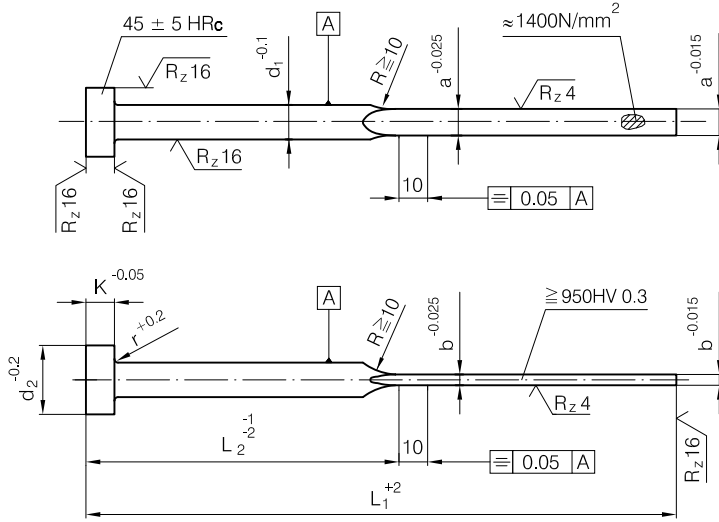


Mat.: WS



2304 - d₁ x L₁

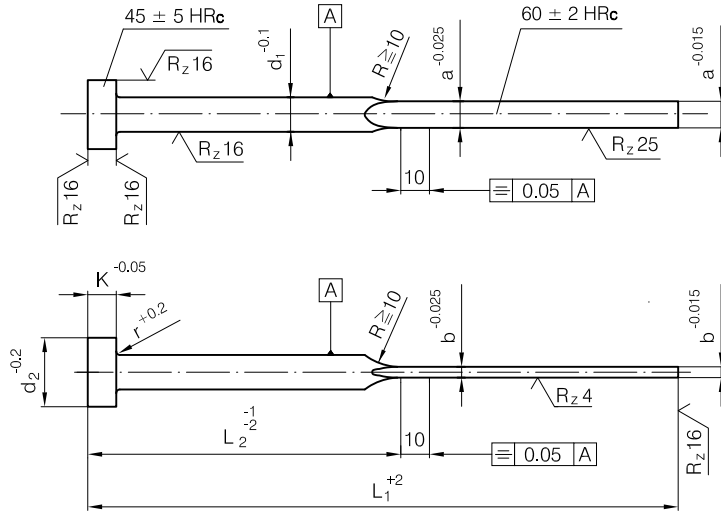
K	L ₂	d ₃	d ₂	d ₁	L ₁	K	L ₂	d ₃	d ₂	d ₁	L ₁
2	25	4	2	0,8	63	3	50	6	3	1,5	100
	32				125						
	50				160						
	63				200						
	80										
	100										
	125										
	150										
	175										
	200										
	225										
	250										
	275										
	300										
	325										
	350										
	375										
	400										
	425										
	450										
	475										
	500										
	525										
	550										
575											
600											
625											
650											
675											
700											
725											
750											
775											
800											
825											
850											
875											
900											
925											
950											
975											
1000											
1025											
1050											
1075											
1100											
1125											
1150											
1175											
1200											
1225											
1250											
1275											
1300											
1325											
1350											
1375											
1400											
1425											
1450											
1475											
1500											
1525											
1550											
1575											
1600											
1625											
1650											
1675											
1700											
1725											
1750											
1775											
1800											
1825											
1850											
1875											
1900											
1925											
1950											
1975											
2000											
2025											
2050											
2075											
2100											
2125											
2150											
2175											
2200											
2225											
2250											
2275											
2300											
2325											
2350											
2375											
2400											
2425											
2450											
2475											
2500											
2525											
2550											
2575											
2600											
2625											
2650											
2675											
2700											
2725											
2750											
2775											
2800											
2825											
2850											
2875											
2900											
2925											
2950											
2975											
3000											
3025											
3050											
3075											
3100											
3125											
3150											
3175											
3200											
3225											
3250											
3275											
3300											
3325											
3350											
3375											
3400											
3425											
3450											
3475											
3500											
3525											
3550											
3575											
3600											
3625											
3650											
3675											
3700											
3725											
3750											
3775											
3800											
3825											
3850											
3875											
3900											
3925											
3950											
3975											
4000											
4025											
4050											
4075											
4100											
4125											
4150											
4175											
4200											
4225											
4250											
4275											
4300											
4325											
4350											
4375											
4400											
4425											
4450											
4475											
4500											
4525											
4550											
4575											
4600											
4625											
4650											
4675											
4700											
4725											
4750											
4775											
4800											
4825											
4850											
4875											
4900											
4925											
4950											
4975											
5000											
5025											
5050											
5075											
5100											
5125											
5150											
5175											
5200											
5225											
5250											
5275											
5300											
5325											
5350											
5375											
5400											
5425											
5450											
5475											
5500											
5525											
5550											
5575											
5600											
5625											
5650											
5675											
5700											
5725											
5750											
5775											
5800											
5825											
5850											
5875											
5900											
5925											
5950											
5975											
6000											
6025											
6050											
6075											
6100											
6125											
6150											
6175											
6200											
6225											
6250											
6275											
6300											
6325											
6350											
6375											
6400											
6425											
6450											
6475											
6500											
6525											
6550											
6575											
6600											
6625											
6650											
6675											
6700											
6725											
6750											
6775											
6800											
6825											
6850											
6875											
6900											
6925											
6950											
6975											
7000											
7025											
7050											
7075											
7100											
7125											
7150											
7175											
7200											
7225											
7250											
7275											
7300											
7325											
7350											
7375											
7400											
7425											
7450											
7475											
7500											
7525											
7550											
7575											
7600											
7625											
7650											
7675											
7700											
7725											
7750											
7775											
7800											
7825											
7850											
7875											
7900											
7925											
7950											
7975											
8000											
8025											
8050											
8075											
8100											
8125											
8150											
8175											
8200											
8225											
8250											
8275											
8300											
8325											
8350											
8375											
8400											
8425											
8450											
8475											
8500											
8525											
8550											
8575											
8600											
8625											
8650											
8675											
8700											
8725											
8750											
8775											
8800											
8825											
8850											
8875											
8900											
8925											
8950											
8975											
9000											
9025											
9050											
9075											
9100											
9125											
9150											
9175											
9200											
9225											
9250											
9275											
9300											
9325											
9350											
9375											
9400											
9425											
9450											
9475											
9500											
9525											
9550											
9575											
9600											
9625											
9650											
9675											
9700											
9725											
9750											
9775											
9800											
9825											
9850											
9875											
9900											
9925											
9950											
9975											
10000											



Mat.: WAS - nitrided

2305 - a x b x L₁

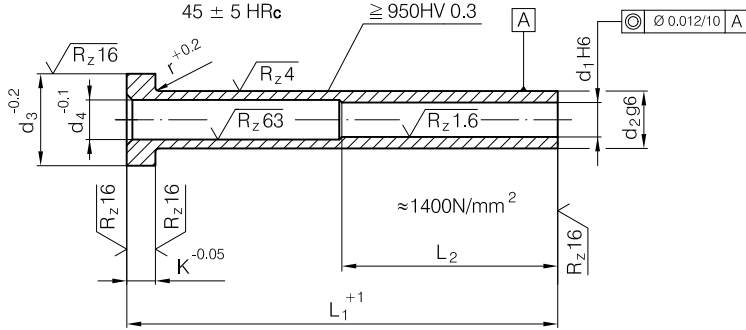
K	L ₂	d ₁	d ₂	a	b	L ₁	K	L ₂	d ₁	d ₂	a	b	L ₁												
3	32	4	8	3,5	1	63	5	63	6	12	5,5	2	125												
	40					80		160																	
	50					100		200																	
	32	4,2		3,8		63		1,2			100		8	50	8	14	7,5	1,5	100						
	40					80					160														
	50					100					200														
	63	5	10	4,5	1,2	125		10	63	10	16	9,5	1,5	125											
	80					160			200																
	40					1,5			100					80	2	100	16	80	16	9,5	2	160			
	50													125		200									
	63													160		250									
	80					200			315					315											
5	40	6	12	5,5	1	80	7	100	12	18	11,5	2,5	200												
	50					100		160																	
	63					125		200																	
	80					160		250																	
	40	6		12	5,5	1,2		80	16	22	15,5	16	22	15,5	2	200									
	50							100								160									
	63							125								200									
	80							160								250									
	50		1,5					100								100	2,5	100	22	15,5	2,5	100	22	15,5	200
	63															125		250							
	80															160		315							
	100															200		400							



Mat.: WS

2306 - a x b x L₁

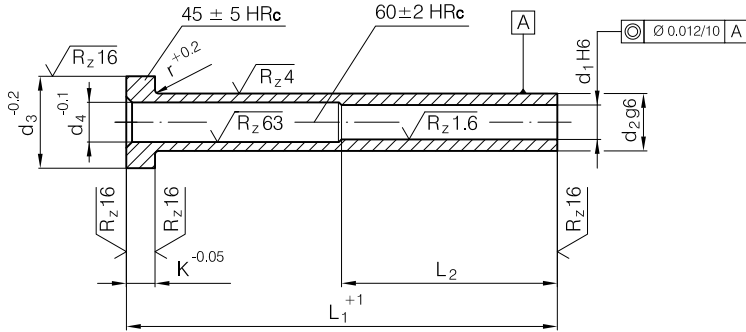
K	L ₂	d ₁	d ₂	a	b	L ₁	K	L ₂	d ₁	d ₂	a	b	L ₁		
3	32	4	8	3,5	1	63	5	63	6	12	5,5	1,2	125		
	40					80									
	50					100									
	63					125									
	32	4,2	8	3,8	1,2	63		7	50	8	14	7,5	1,5	100	
	40					80									
	50					100									
	63					125									
	80	5	10	4,5	1,2	160			7	63	10	16	9,5	1,5	200
	40					80									
	50					100									
	63					125									
80	6	12	5,5	1	160	7	80			12	18	11,5	2	200	
50					100										
63					125										
80					160										
100	5	10	4,5	1,5	200		7	100		12	18	11,5	2,5	250	
40					80										
50					100										
63					125										
80	6	12	5,5	1,2	100			7	125	12	18	11,5	2,5	315	
50					100										
63					125										
80					160										
100	5	10	4,5	1,5	200	7			160	12	18	11,5	2,5	315	
40					80										
50					100										
63					125										



Mat.: WAS - nitrided

2310 - d₁ x L₁

K	L ₂	d ₄	d ₃	d ₂	d ₁	L ₁	K	L ₂	d ₄	d ₃	d ₂	d ₁	L ₁			
3	30	2,3	8	4	2	75 100 125 150	5	45	5,5	14	8	5,2	100 125 150 175 200			
					2,2	75 100 125 150						6	75 100 125 150 175			
					2,8	2,5							6	100 125 150 175		
		3,3	3	5	3	75 100 125 150 175										
		3,5	3,2	5	3,2	75 100 125 150 175										
		5	45	3,8	12	6			3,5	75 100 125 150 175	7	45	8,3	20	12	8
	4,3							4	6	4						75 100 125 150 175 200
	4,5							4,2	8	4,2						75 100 125 150 175 200
	5,3		14	8	5	75 100 125 150 175 200		22	16	12		10	100 125 150 175 200 250			
					5,5	5,2						8	5,2	75 100 125 150 175 200		



Mat.: WS



2311 - d₁ x L₁

K	L ₂	d ₄	d ₃	d ₂	d ₁	L ₁	K	L ₂	d ₄	d ₃	d ₂	d ₁	L ₁							
3	30	2,3	8	4	2	75	5	45	5,3	14	8	5,2	250							
						100							75							
						125							100							
		2,5			75	2,2						150	125							
												100	150							
												125	200							
	3,3	10	5	5	3	75			7	20	6,3	16	10	6	75					
						100									100					
						125									150					
					3,5	125								3,2	150	175	200	6,2	250	
																			75	100
																			100	125
5	45	3,8	12	6	3,5	75	7	8,3	20	12	8	100								
												125	150							
												150	175							
		4,3			150						4	175	200	250	8,2	250				
																75	100			
																100	125			
5	45	4,5	14	8	4,2	75	7	10,3	22	14	10	100								
												125	150							
												150	175							
		5,3			175						5	200	250	12	12	250				
																75	100			
																100	125			
5	45	5,3	14	8	5	75	7	12,3	22	16	12	100								
												100	125							
												125	150							
		5,3			175						5	200	250	12	12	250				
																75	100			
																100	125			

BITTE KOPIEREN / PLEASE COPY / COPIARE PREGO / PROSIMO KOPIRAJTE

Bestell Nr.: / Order No.: _____
Ordine No.: / Naročilo št.: _____

Anfrage Nr.: / Inquiry No.: _____
Richiesta No.: / Povpraševanje št.: _____

Firma / Company: _____
 Ditta / Podjetje: _____

Datum / Date: _____
 Data / Datum: _____

Adresse / Address: _____
 Indirizzo / Naslov: _____

Kontaktperson / Contact Person: _____
 Contatto / Kontakt: _____

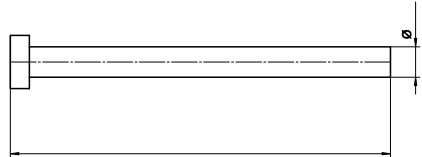
Telefon / Phone: _____
 Telefono / Telefon: _____

Fax : _____

E - mail : _____

2300

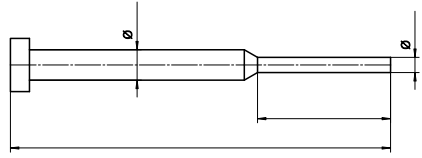
2301



Menge / Quantity: _____
 Quantità / Količina: _____
 Bemerkung / Notice: _____
 Nota / Opombe: _____

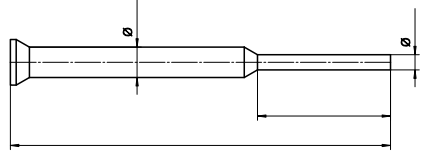
2303

2304



Menge / Quantity: _____
 Quantità / Količina: _____
 Bemerkung / Notice: _____
 Nota / Opombe: _____

2302R



Menge / Quantity: _____
 Quantità / Količina: _____
 Bemerkung / Notice: _____
 Nota / Opombe: _____



BITTE KOPIEREN / PLEASE COPY / COPIARE PREGO / PROSIMO KOPIRAJTE

Bestell Nr.: / Order No.: _____
Ordine No.: / Naročilo št.: _____

Anfrage Nr.: / Inquiry No.: _____
Richiesta No.: / Povpraševanje št.: _____

Firma / Company: _____
 Ditta / Podjetje: _____

Datum / Date: _____
 Data / Datum: _____

Adresse / Address: _____
 Indirizzo / Naslov: _____

Kontaktperson / Contact Person: _____
 Contatto / Kontakt: _____

Telefon / Phone: _____
 Telefono / Telefon: _____

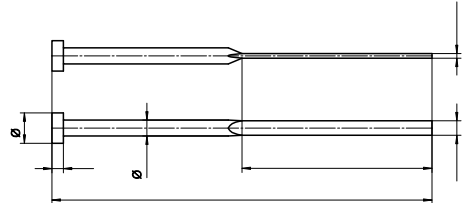
Fax : _____

E - mail : _____



2305

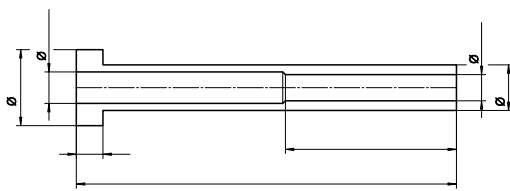
2306



Menge / Quantity: _____
 Quantità / Količina: _____
 Bemerkung / Notice: _____
 Nota / Opombe: _____

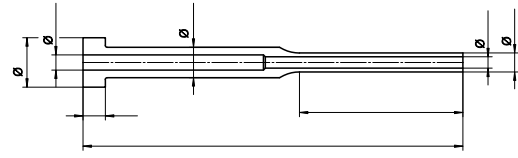
2310

2311



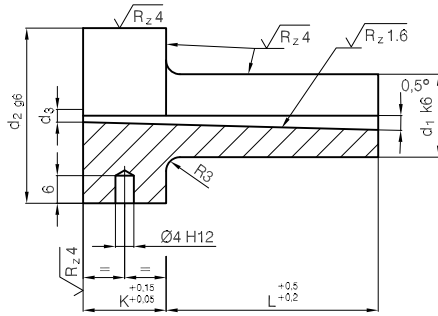
Menge / Quantity: _____
 Quantità / Količina: _____
 Bemerkung / Notice: _____
 Nota / Opombe: _____

2310R



Menge / Quantity: _____
 Quantità / Količina: _____
 Bemerkung / Notice: _____
 Nota / Opombe: _____

2340.1 H



Mat.: 1.2826 54 ± 2HRc

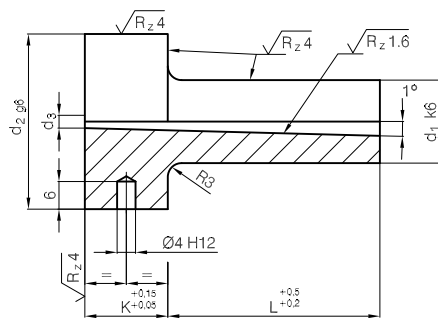


2340.1 H - d₁ x L x d₃

K	d ₂	d ₁	L	d ₃
13	28	12	27	2,5
			36	
			46	
			56	3,5
			27	
			36	
18	38	18	46	3
			56	
			66	
			66	

K	d ₂	d ₁	L	d ₃
18	38	18	76	3
			86	
			96	
			116	4
			46	
			56	
18	38	18	66	4
			76	
			86	
			96	
18	38	18	116	4
			116	

2340.2 H



Mat.: 1.2826 54 ± 2HRc

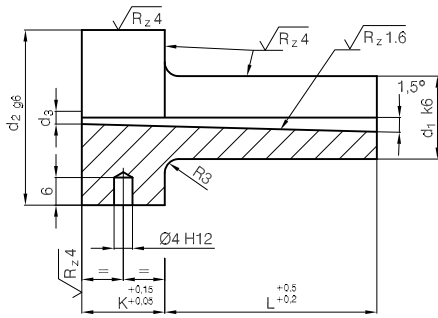


2340.2 H - d₁ x L x d₃

K	d ₂	d ₁	L	d ₃
13	18	12	22	2,5
			27	
			36	
			46	3,5
			27	
			36	
18	38	18	46	3
			56	
			66	
			66	

K	d ₂	d ₁	L	d ₃
18	38	18	56	3
			76	
			96	
			116	4
			27	
			36	
18	38	18	46	4
			56	
			76	
			96	
18	38	18	116	4
			116	

2340.3 H



Mat.: 1.2826 54 ± 2HRc

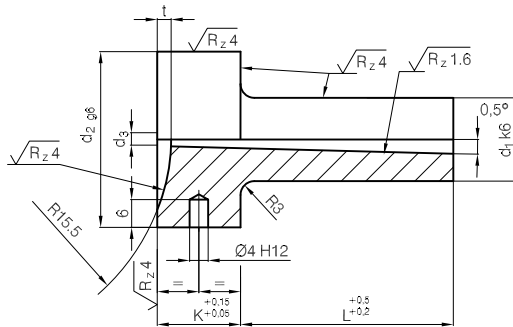


2340.3 H - d₁ x L x d₃

K	d ₂	d ₁	L	d ₃
18	38	18	27	3,5
			36	
			46	
			56	
27	38	18	27	4,5
			36	
			46	
			56	

K	d ₂	d ₁	L	d ₃
18	38	18	56	4,5
			76	
23	48	24	46	6,5
			56	
			76	
			76	

2340.4 H



Mat.: 1.2826 54 ± 2HRc

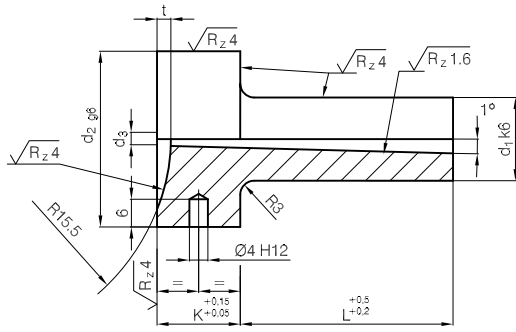


2340.4 H - d₁ x L x d₃

t	K	d ₂	d ₁	L	d ₃
1,5	13	28	12	27	2,5
				36	
				46	
				56	
2,5	13	28	12	27	3,5
				36	
				46	
				56	
3,0	18	38	18	46	3
				56	
				66	
				66	

t	K	d ₂	d ₁	L	d ₃
1,5	13	28	12	76	3
				86	
				96	
				116	
2,5	13	28	12	46	4
				56	
				66	
				76	
3,0	18	38	18	86	4
				96	
				96	
				116	

2340.5 H



Mat.: 1.2826 54 ± 2HRc

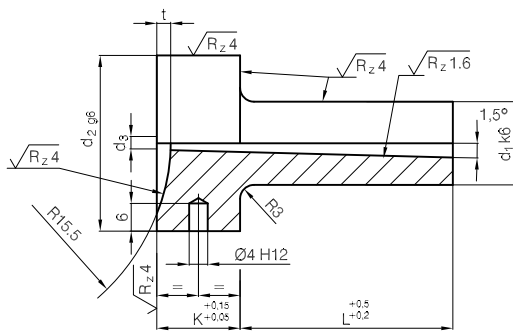


2340.5 H - d₁ x L x d₃

t	K	d ₂	d ₁	L	d ₃
1,5	13	28	12	22	2,5
				27	
				36	
				46	
				22	
3,0	18	38	18	27	3,5
				36	
				46	
				56	
3,0	18	38	18	27	3
				36	
				46	

t	K	d ₂	d ₁	L	d ₃
3,0	18	38	18	56	3
				76	
				96	
				116	
				27	
3,0	18	38	18	36	4
				46	
				56	
				76	
				96	
3,0	18	38	18	116	4
				116	

2340.6 H



Mat.: 1.2826 54 ± 2HRc

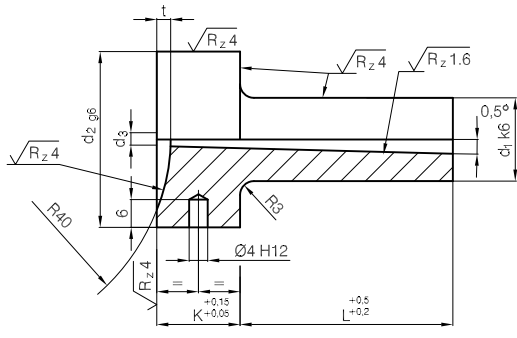


2340.6 H - d₁ x L x d₃

t	K	d ₂	d ₁	L	d ₃	
3,0	18	38	18	27	3,5	
				36		
				46		
				56		
				27		
	23	48	48	24	36	4,5
					46	
					56	
					76	
					46	

t	K	d ₂	d ₁	L	d ₃	
3,0	18	38	18	56	4,5	
				76		
				46		
				56		
				76		
	23	48	48	24	56	6,5
					76	
					56	
					76	
					76	

2340.7 H



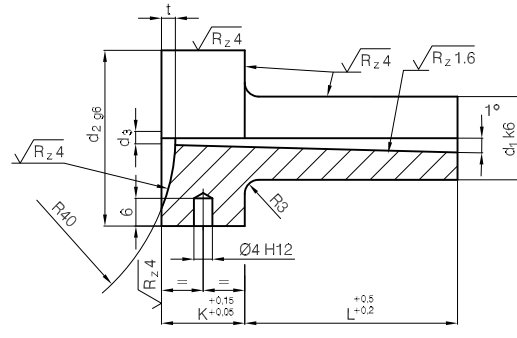
Mat.: 1.2826 54 ± 2HRc

✍️ 2340.7 H - d₁ x L x d₃

t	K	d ₂	d ₁	L	d ₃
1,5	13	28	12	22	2,5
				27	
				36	
				46	
				22	
3,0	18	38	18	27	3,5
				27	
				36	
				46	
				56	
3,0	18	38	18	27	3
				36	
				46	

t	K	d ₂	d ₁	L	d ₃
3,0	18	38	18	56	3
				76	
				96	
				116	
				27	
3,0	18	38	18	36	4
				46	
				56	
				76	
				96	
3,0	18	38	18	116	4
				116	

2340.8 H



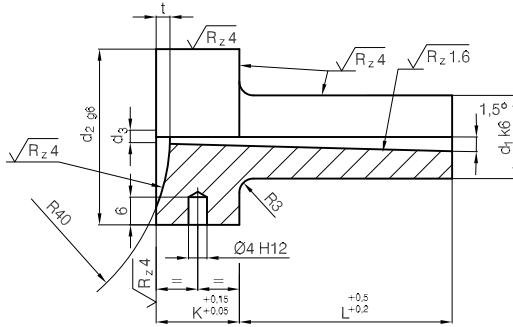
Mat.: 1.2826 54 ± 2HRc

✍️ 2340.8 H - d₁ x L x d₃

t	K	d ₂	d ₁	L	d ₃
1,5	13	28	12	22	2,5
				27	
				36	
				46	
				22	
3,0	18	38	18	27	3,5
				27	
				36	
				46	
				56	
3,0	18	38	18	27	3
				36	
				46	

t	K	d ₂	d ₁	L	d ₃
3,0	18	38	18	56	3
				76	
				96	
				116	
				27	
3,0	18	38	18	36	4
				46	
				56	
				76	
				96	
3,0	18	38	18	116	4
				116	

2340.9 H



Mat.: 1.2826 54 ± 2HRc

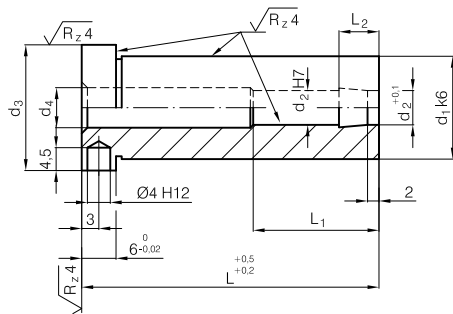


2340.9 H - d₁ x L x d₃

t	K	d ₂	d ₁	L	d ₃
3,0	18	38	18	27	3,5
				36	
				46	
				56	4,5
				27	
				36	
46					

t	K	d ₂	d ₁	L	d ₃
3,0	18	38	18	56	4,5
				76	
				46	
	23	48	24	56	6,5
				76	
				56	
76					

2341 H



Mat.: 1.2826 54 ± 2HRc

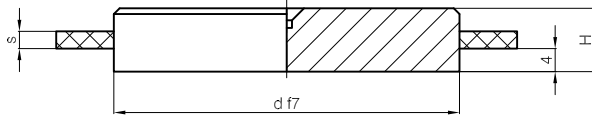


2341 H - d₁ x L

L ₂	L ₁	d ₄	d ₃	d ₂	d ₁	L
7,0	18	4,5	16	4	12	22
						27
						36
						46
	22	6,5	22	6	18	22
						27
36						

L ₂	L ₁	d ₄	d ₃	d ₂	d ₁	L
7,0	22	6,5	22	6	18	46
						56
						36
						46
9,5	28	8,5	28	8	24	56
						76
						36
						96

2345.1 H



Mat.: 1.1191



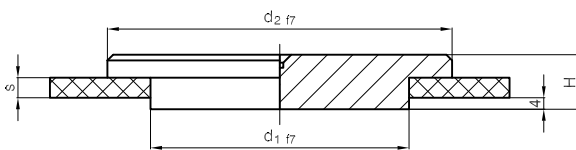
2345.1 H - d x H

s	d	H
-	40	6
3		9
-	60	8
3		11
5		13
-	80	8
3		15
5		17
-	90	12
3		15
5		17
7		19
8,5		21

s	d	H
-	100	12
8,5		21
-	110	12
8,5		21
-	120	12
8,5		21
-	125	8
-		12
5,0		18
8,5	130	21
-		12
-	140	12
-	150	12

s	d	H
8,5	150	21
-		8
-	160	12
5,0		20
8,5		23
-	175	12
8,5		21
-	200	12
5		20
8,5		23
-	250	12
8,5		23

2345.2 H



Mat.: 1.1191

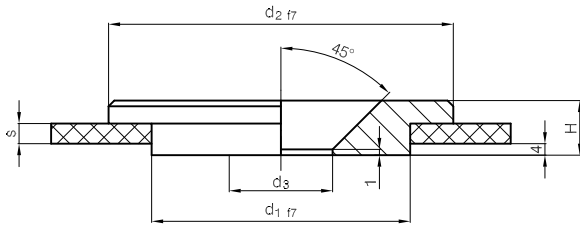


2345.2 H - d₂ x H

s	d ₁	d ₂	H
-	90	60	8
3			11
5			13
-		80	12
3			15
5			17
-		100	12
3			15
5			17
7			19
8,5	21		
-	110	12	
3		15	
5		17	

s	d ₁	d ₂	H
7	90	110	19
8,5			21
-		120	12
3			15
5			17
7		125	19
8,5			21
-		125	12
3			15
5			17
7	140	19	
8,5		21	
-	150	12	

s	d ₁	d ₂	H
-	90	160	12
3			15
5			17
7		175	19
8,5			21
-			12
3		175	15
5			17
7			19
8,5		200	21
-	12		
-	250	12	



Mat.: 1.1191



2345.3 H - $d_2 \times H$

s	d_3	d_1	d_2	H
-				8
3	36	90	60	11
5				13
-				12
3	36	90	80	15
5				17
-				12
3				15
5	36	90	90	17
7				19
8,5				21
-				12
3				15
5	36	90	100	17
7				19
8,5				21

s	d_3	d_1	d_2	H
-				12
3				15
5	36	90	110	17
7				19
8,5				21
-				12
3				15
5	36	90	120	17
7				19
8,5				21
-				12
3				15
5	36	90	125	17
7				19
8,5				21
-	36	90	130	12

s	d_3	d_1	d_2	H
-	36	90	140	12
			150	
-				12
3				15
5	36	90	160	17
7				19
8,5				21
-				12
3				15
5	36	90	175	17
7				19
8,5				21
-	36	90	180	12
			200	
			250	

