



Platten  
Plates  
**A** Piastre  
Plošče  
Desky

Führungselemente  
Guide elements  
**B** Elementi di guida  
Vodilni elementi  
Vodící díly

Präzisionsteile  
Precision elements  
**C** Elementi di precisione  
Precizni elementi  
Přesné díly



Temperierelemente  
Elements for heating and cooling  
Elementi di raffreddamento  
Hladilni elementi  
Díly pro temperaci a chlazení

**D**

Federelemente  
Springs & elastomers  
**E** Molle ed elastomeri  
Vzmeti in elastomeri  
Pružiny a elastomery

Zubehör  
Accessories  
**F** Accessori  
Pripomočky  
Příslušenství

**G** Info

## D

### TEMPERIERELEMENTE / ELEMENTS FOR HEATING AND COOLING / ELEMENTI DI RAFFREDDAMENTO / HLADILNI ELEMENTY / DÍLY PRO TEMPERACI A CHLAZENÍ

2500/2503

[2500 ~~XXXX~~]

[2503 ~~XXXX~~]

25-1

2510

25-3



**Schnellverschlußkupplungen**  
Quick-release couplings  
**Innesti rapidi**  
Hitre spojke  
Rychlospojky



**Schnellverschlußkupplungen**  
Quick-release couplings  
**Innesti rapidi**  
Hitre spojke  
Rychlospojky

2501/2504

[2501 ~~XXXX~~]

[2504 ~~XXXX~~]

25-1

2520

25-3



**Schnelverschlußkupplungen**  
Quick-release couplings  
**Innesti rapidi**  
Hitre spojke  
Rychlospojky



**Anschlußtüllen**  
Connection nipples  
**Raccordi con portagomma**  
Cevni priključki  
Nátrubky

2502/2505

[2502 ~~XXXX~~]

[2505 ~~XXXX~~]

25-1

2521

25-3



**Schnellverschlußkupplungen**  
Quick-release couplings  
**Innesti rapidi**  
Hitre spojke  
Rychlospojky



**Anschlußtüllen**  
Connection nipples  
**Raccordi**  
Cevni priključki  
Vývodky

2506/2509

[2506 ~~XXXX~~]

[2509 ~~XXXX~~]

25-2

2522

25-4



**Schnellverschlußkupplungen**  
Quick-release couplings  
**Innesti rapidi**  
Hitre spojke  
Rychlospojky



**Schnellverschlußkupplungen**  
Connection nipples  
**Raccordi con portagomma**  
Cevni priključki  
Rychlospojky

2507

25-2

2523/2526

[2523 ~~XXXX~~]

[2526 ~~XXXX~~]

25-4



**Schnellverschlußkupplungen**  
Quick-release couplings  
**Innesti rapidi**  
Hitre spojke  
Rychlospojky



**Anschlußnippel**  
Connection nipples  
**Raccordi filettati**  
Cevni priključki  
Vývodky

2508

25-2

2524

25-5



**Schnellverschlußkupplungen**  
Quick-release couplings  
**Innesti rapidi**  
Hitre spojke  
Rychlospojky





**Anschlußnippel 90°**  
Connection nipples 90°  
**Raccordi a 90°**  
Cevni priključki, kotni 90°  
Vývodky 90°



## D

## TEMPERIERELEMENTE / ELEMENTS FOR HEATING AND COOLING / ELEMENTI DI RAFFREDDAMENTO / HLADILNI ELEMENTI / DÍLY PRO TEMPERACI A CHLAZENÍ

2525	25-5	2532	25-8
	<b>Verlängerungsniessel</b> Extension nipples <b>Raccordi prolungati</b> Cevni priključki, podaljšani Vývodky		<b>Reduzierniessel</b> Reducing nipples <b>Raccordi a riduttore</b> Reducirni priključki Redukce
2527	25-6	2533	25-8
	<b>Reduzierniessel</b> Reducing nipples <b>Raccordi con riduttore</b> Reducirani priključki Redukce		<b>Schlauchtüllen</b> Hose nipples <b>Raccordi con portagomma</b> Cevni priključki Vývodky
2528	25-6	2534	25-9
	<b>Verschlussniessel-Verlängerungen</b> Sealing nipple extensions <b>Raccordi prolungati</b> Cevni priključki, podaljšani Nátrubky		<b>Schlauchtüllen</b> Hose nipples <b>Raccordi con portagomma</b> Cevni priključki Vývodky
2529	25-6	2535	25-9
	<b>Schlauchtüllen 90°</b> Hose nipples 90° <b>Raccordi a 90°</b> Cevni priključki z navojem, kotni 90° Vývodky 90°		<b>Schlauchtüllen</b> Hose nipples <b>Raccordi con portagomma</b> Cevni priključki Vývodky
2530	25-7	2536	25-9
	<b>Verlängerungstüllen</b> Extension hose nipples <b>Raccordi con portagomma prolungati</b> Cevni priključki, podaljšani Vývodky		<b>Schlauchtüllen</b> Hose nipples <b>Raccordi con portagomma</b> Cevni priključki Vývodky
2531	25-7	2537	25-10
	<b>Doppelniessel</b> Double nipples <b>Raccordi doppi</b> Dvojni priključki Spojky		<b>Schlauchtüllen</b> Hose nipples <b>Raccordi con portagomma</b> Cevni priključki Vývodky



## D

### TEMPERIERELEMENTE / ELEMENTS FOR HEATING AND COOLING / ELEMENTI DI RAFFREDDAMENTO / HLADILNI ELEMENTI / DÍLY PRO TEMPERACI A CHLAZENÍ

2540/2541

[2540 Mat.: 5.8] [2541 Mat.: Ms] 25-10



**Verschlussstopfen**  
Pressure plugs  
**Tappi di chiusura**  
Zamaški  
Ucpávky

2561.1

25-14



**Schläuche (140°C)**  
Hoses (140°C)  
**Tubi (140°C)**  
Cevi (140°C)  
Hadice (140°C)

2542/2543

[2542 Mat.: 5.8] [2543 Mat.: Ms] 25-11



**Verschlussstopfen**  
Pressure plugs with washer  
**Tappi di chiusura con rondella**  
Zamaški s podložko  
Ucpávky

2561.2

25-14



**Schläuche (150°C)**  
Hoses (150°C)  
**Tubi (150°C)**  
Cevi (150°C)  
Hadice (150°)

2544

25-11



**Verschlussstopfen**  
Pressure plugs  
**Tappi di chiusura**  
Zaporni čepi  
Ucpávky

2561.3

25-14



**Schläuche (60°C)**  
Hoses (60°C)  
**Tubi (60°C)**  
Cevi (60°C)  
Hadice (60°)

2549

25-12



**Hochleistungs-Wärmeleitpatronen**  
Super thermal conductors  
**Cartucce raffreddanti**  
Super termični prevodniki  
Tepelně vodivá jádra

2562.1

25-15



**Montagehülsen**  
Assembly sleeves  
**Manicotti**  
Zaključne tulke  
Manžety

2550

25-13



**Spiralumlenkstäbe**  
Spiral plug baffles  
**Raffreddatori a spirale**  
Hladilna jedra, spiralna  
Chladící spirály

2562.2

25-15



**Schlauchmontagewerkzeug**  
Hose assembly tools  
**Attrezzi per assemblaggio tubi**  
Priprava za montažo cevi  
Lisovací kleště

2551

25-13



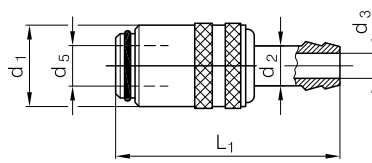
**Kühlwasserverteiler**  
Cascade water junctions  
**Raffreddatori a fontana**  
Hladilni razvodni elementi  
Chladící fontány




2500 

KERN 20  
PART SERVER 30

2503 



Mat.: Ms

 2500/2503 - d<sub>2</sub>/d<sub>5</sub>

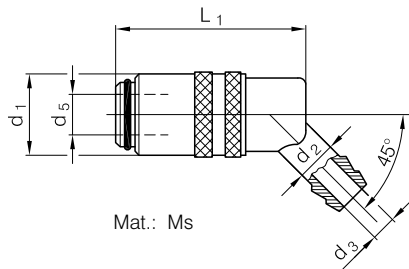
d <sub>1</sub>	d <sub>3</sub>	L <sub>1</sub>	d <sub>2</sub> /d <sub>5</sub>
17	6	49	9
23	9	56	13
31	13	90	19




2501 

KERN 20  
PART SERVER 30

2504 



Mat.: Ms

 2501/2504 - d<sub>2</sub>/d<sub>5</sub>

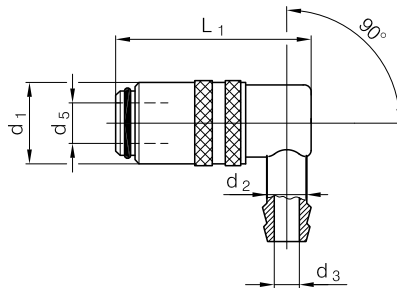
d <sub>1</sub>	d <sub>3</sub>	L <sub>1</sub>	d <sub>2</sub> /d <sub>5</sub>
17	6	48	9
23	9	56	13
31	13	78	19




2502 

KERN 20  
PART SERVER 30

2505 



Mat.: Ms

 2502/2505 - d<sub>2</sub>/d<sub>5</sub>

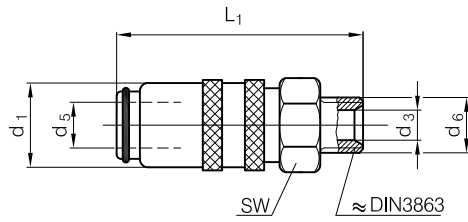
d <sub>1</sub>	d <sub>3</sub>	L <sub>1</sub>	d <sub>2</sub> /d <sub>5</sub>
17	6	48	9
23	9	56	13
31	13	78	19



2506 

KERN PART SERVER 20 30

2509 



Mat.: Ms



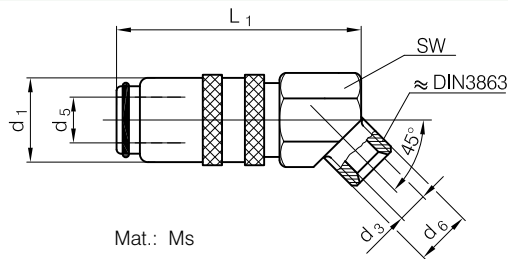
2506/2509 -  $d_5 \times d_6$

$d_1$	$d_3$	$L_1$	SW	$d_5$	$d_6$
17	6	48	17	9	M10x1
					M14x1,5
					G1/4
23	9	53	21	13	G3/8
					G1/4
					G3/8
31	13	78	30	19	M16x1,5
					G1/2
					G3/4
					M24x1,5



2507 

KERN PART SERVER 20 30



Mat.: Ms



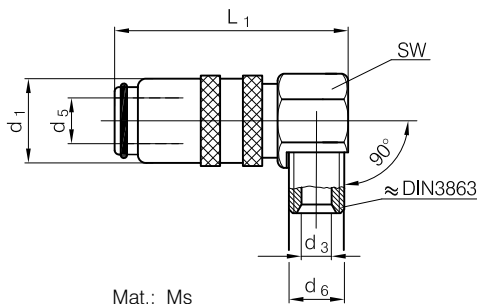
2507 -  $d_5 \times d_6$

$d_1$	$d_3$	$L_1$	SW	$d_5$	$d_6$
17	6	48	14	9	M14x1,5
					G1/4
					G3/8
			17		



2508 

KERN PART SERVER 20 30



Mat.: Ms



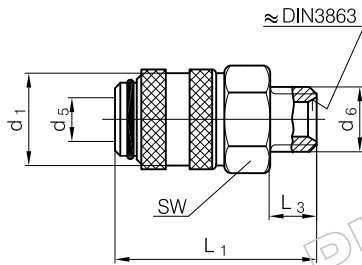
2508 -  $d_5 \times d_6$

$d_1$	$d_3$	$L_1$	SW	$d_5$	$d_6$
17	6	48	14	9	M14x1,5
					G1/4
					G3/8
			17		



2510 

KERN 20  
PART SERVER 30



Mat.: Ms

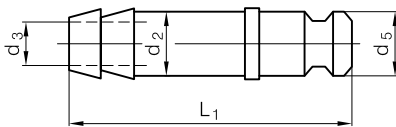
 2510 - d<sub>5</sub>

d <sub>1</sub>	L <sub>1</sub>	L <sub>3</sub>	SW	bar	°C	d <sub>6</sub>	d <sub>5</sub>
18	38	9	17	15	200	G1/4A	9
23	38	9	22	10	Viton	G3/8A	13



2520 

KERN 20  
PART SERVER 30



Mat.: Ms

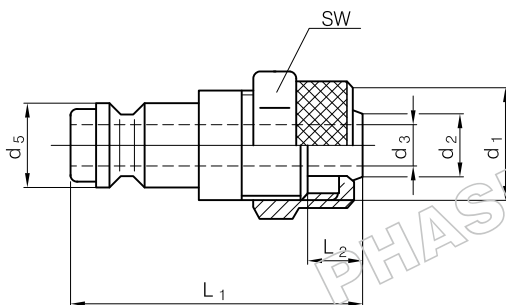
 2520 - d<sub>5</sub> x d<sub>2</sub>

d <sub>3</sub>	L <sub>1</sub>	d <sub>5</sub>	d <sub>2</sub>
6	38	9	10
9	41	13,5	10
			13
13	61	19	13
			19



2521 

KERN 20  
PART SERVER 30



Mat.: Ms

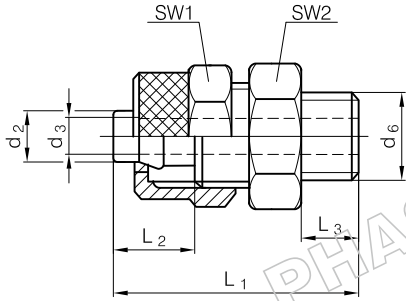
 2521 - d<sub>2</sub>

d <sub>1</sub>	L <sub>1</sub>	L <sub>2</sub>	SW	d <sub>5</sub>	d <sub>2</sub>
M12 x 1	32	6	14	9	6



2522 

KERN 20  
PART SERVER 30



Mat.: Ms

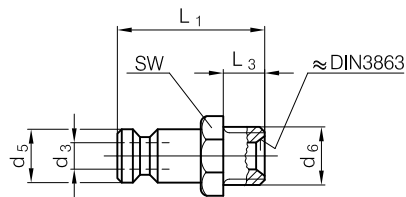
 2522 - d<sub>2</sub>

d <sub>3</sub>	L <sub>1</sub>	L <sub>2</sub>	L <sub>3</sub>	SW <sub>1</sub>	SW <sub>2</sub>	d <sub>6</sub>	d <sub>2</sub>
5	25	7	7	14	14	G1/8A	6

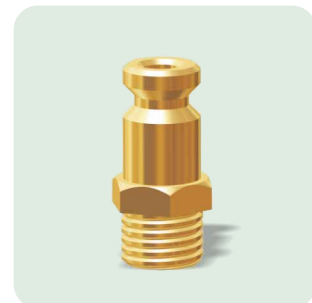
2523 


KERN 20  
PART SERVER 30

2526 



Mat.: Ms



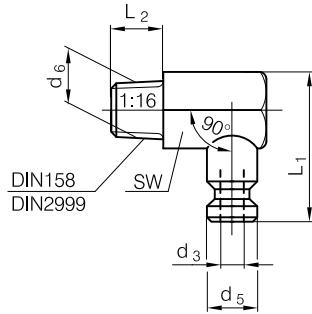
 2523/2526 - d<sub>5</sub> x d<sub>6</sub>

d <sub>3</sub>	L <sub>1</sub>	L <sub>3</sub>	SW	d <sub>5</sub>	d <sub>6</sub>	2523	2526	
6	26	8	11	9	G1/8			
			14		M10x1			
	30	10	17		G1/4			
			14		G3/8			
9	27	8	15	13	M14x1,5			
6/9			14		G1/4			
9			10		17	M16x1,5		
					14	G3/8		
13	47	12	22	19	G1/2			
	51	16	27		G3/4			
					M24x1,5			



2524

KERN PART SERVER 20 30



Mat.: Ms

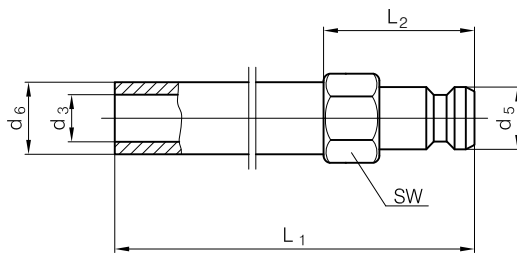


2524 - d<sub>5</sub> x d<sub>6</sub>

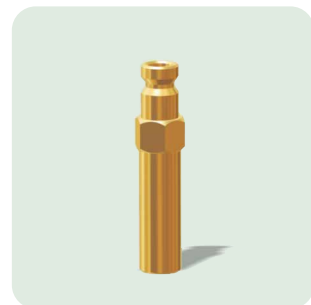
d <sub>3</sub>	L <sub>1</sub>	L <sub>2</sub>	d <sub>5</sub>	d <sub>6</sub>
6	30	8	9	G1/8
				M10x1
	G1/4			
9	34		13	G3/8
	36			G1/4
				G3/8

2525

KERN PART SERVER 20 30



Mat.: Ms

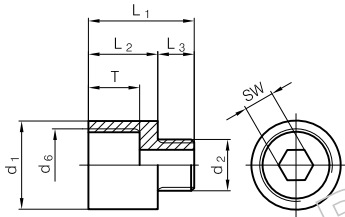


2525 - d<sub>5</sub> x L<sub>1</sub>

d <sub>3</sub>	d <sub>6</sub>	L <sub>2</sub>	SW	d <sub>5</sub>	L <sub>1</sub>
6	10	21	11	9	120
					240
					360
9	14	22	15	13	150
					300
					450
13	21	35	22	19	500
					800

2527

KERN 20  
PART SERVER 30



Mat.: Ms

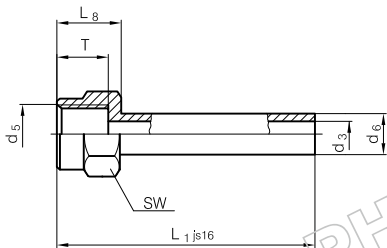
2527 - d<sub>2</sub>

d <sub>1</sub>	L <sub>1</sub>	L <sub>2</sub>	L <sub>3</sub>	T	SW	d <sub>6</sub>	d <sub>2</sub>
17	22	15	7	12	6	G1/4	G1/8A
20	24		9			M16x1,5 G3/8	M14x1,5 G1/4A



2528

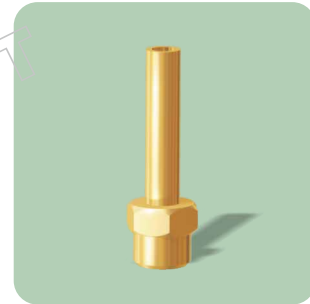
KERN 20  
PART SERVER 30



Mat.: Ms

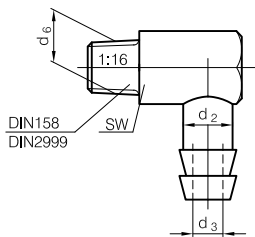
2528 - Typ x L<sub>1</sub>

d <sub>6</sub>	d <sub>3</sub>	L <sub>8</sub>	T	SW	d <sub>5</sub>	Typ	L <sub>1</sub>
10	6	15,5	12	17	M14x1,5	9	240
14	9			22	M16x1,5	13	300



2529

KERN 20  
PART SERVER 30



Mat.: Ms

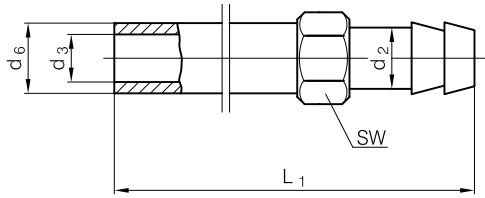
2529 - d<sub>2</sub> x d<sub>6</sub>

d <sub>3</sub>	d <sub>2</sub>	d <sub>6</sub>
6	10	M10x1
		G1/8
9	13	G1/4
		G3/8



2530

KERN 20  
PART SERVER 30



Mat.: Ms

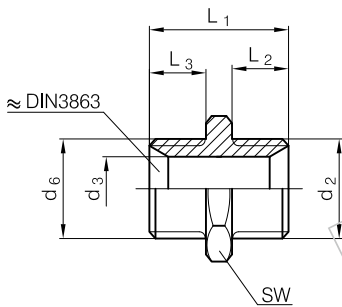


 2530 -  $d_2 \times L_1$

$d_3$	$d_6$	SW	$d_2$	$L_1$
6	10	11	10	240
				360
9	14	15	13	150
				300


2531

KERN 20  
PART SERVER 30



Mat.: Ms

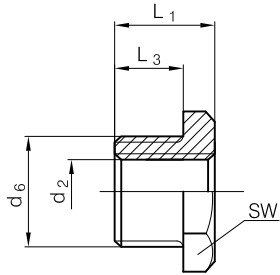


 2531 -  $d_2 \times d_6$

$d_3$	$L_1$	$L_2$	$L_3$	SW	$d_2$	$d_6$
6	23	9	9	17	M14 x 1,5	M14 x 1,5
					G 1/4 A	M14 x 1,5
13	40	16	16	27	M24 x 1,5	M24 x 1,5
					G 1/2 A	M24 x 1,5

2532

KERN 20  
PART SERVER 30



Mat.: Ms

PHASING OUT

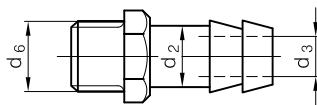


2532 -  $d_2$

$L_1$	$L_3$	SW	$d_6$	$d_2$
13	9	19	G3/8A	G1/4
18	12	24	M24x1,5	M16x1,5
24	16	27	G3/4A	G1/2

2533

KERN 20  
PART SERVER 30



Mat.: Ms

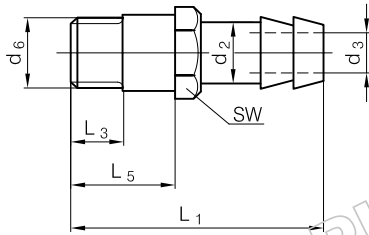


2533 -  $d_2 \times d_6$

$d_3$	$d_2$	$d_6$
6	10	M10x1
		G1/8
		G1/4
8	13	M12x1,5
G1/4		
M14x1,5		
9		G3/8

2534

KERN 20  
PART SERVER 30



Mat.: Ms

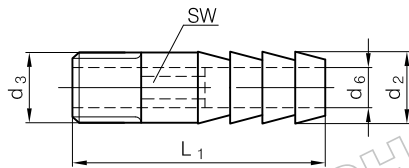


2534 - d<sub>2</sub> x d<sub>6</sub>

d <sub>3</sub>	L <sub>1</sub>	L <sub>3</sub>	L <sub>5</sub>	SW	d <sub>2</sub>	d <sub>6</sub>
6	35	7	14	11	9	G1/8A
9	47	9	16	15	13	M14x1,5 G1/4A

2535

KERN 20  
PART SERVER 30



Mat.: Fe + Zn

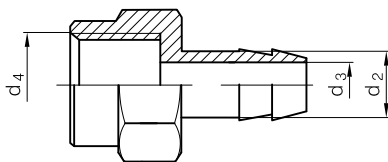


2535 - d<sub>6</sub>

d <sub>2</sub>	d <sub>3</sub>	L <sub>1</sub>	SW	d <sub>6</sub>
10	G 1/8	40	6	6

2536

KERN 20  
PART SERVER 30



Mat.: Ms

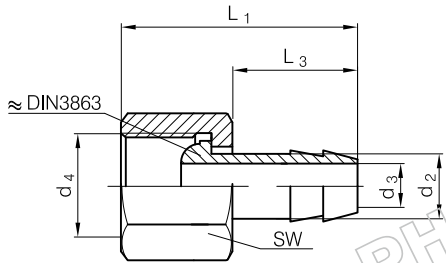


2536 - d<sub>2</sub> x d<sub>4</sub>

d <sub>3</sub>	d <sub>2</sub>	d <sub>4</sub>
6	10	G1/8
		G1/4
9	13	G3/8

2537

KERN 20  
PART SERVER 30



Mat.: Ms



2537 - d<sub>2</sub> x d<sub>4</sub>

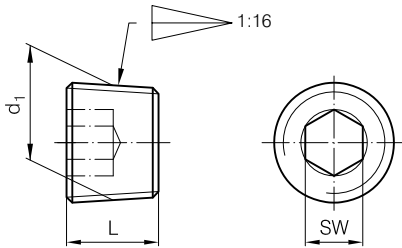
d <sub>3</sub>	L <sub>1</sub>	L <sub>3</sub>	SW	d <sub>2</sub>	d <sub>4</sub>
6	34,5	19	17	9	G1/4

2540 5.8

DIN 906

KERN 20  
PART SERVER 30

2541 Ms



DIN 906 Mat.: 5.8, Ms



2540/2541 - d<sub>1</sub>

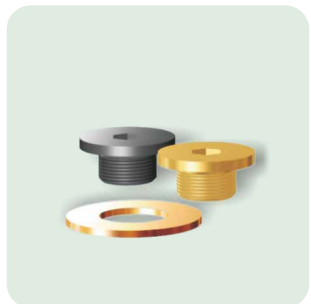
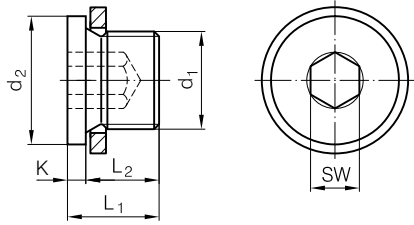
L	SW	d <sub>1</sub>
8	4	M8x1
	5	M10x1 G1/8
10	6	M12x1,5 G1/4
	7	M14x1,5
	8	G3/8
	10	G1/2

**2542** 5.8

DIN 908

KERN PART SERVER 20 30

**2543** Ms



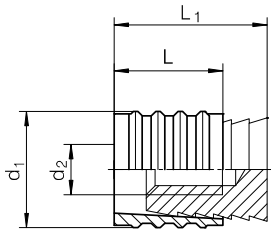
DIN 908 Mat.: 5.8

**2542/2543 - d<sub>1</sub>**

d <sub>2</sub>	L <sub>1</sub>	L <sub>2</sub>	K	SW	d <sub>1</sub>	2542	2543
14	11	8	3	5	M10x1	■	■
17	15	12		6	M12x1,5	■	■
19					M14x1,5	■	■
18	18	14	4	8	G1/4"	■	■
22				G3/8"	■	■	
26				G1/2"	■	■	

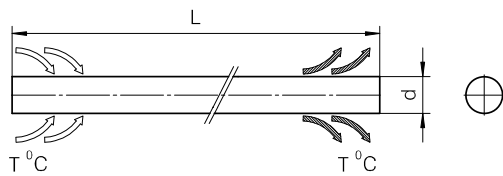
**2544**

KERN PART SERVER 20 30

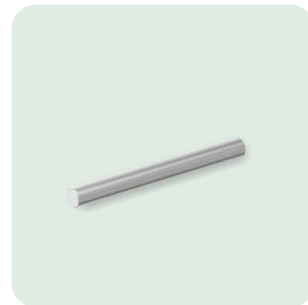



**2544 - D**

L <sub>1</sub>	L	d <sub>2</sub>	D
11,5	8	M3	6
11,5	8	M4	8
14	10	M6	10
14	10	M6	12
16	12	M8	16



+5°C do +275°C



 **2549 - d x L**

d	L
2,5	50
	60
	80
	100
	125
3	50
	60
	80
	100
	125
	175
4	50
	60
	80
	100
	100

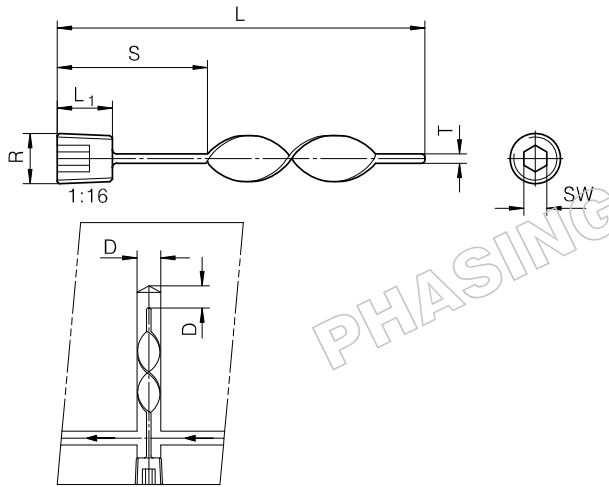
d	L
4	125
	175
	200
5	50
	60
	80
	100
	125
	175
6	50
	60
	80
	100
	125

d	L
6	175
	200
	250
8	100
	125
	175
	200
	250
10	100
	125
	175
	250





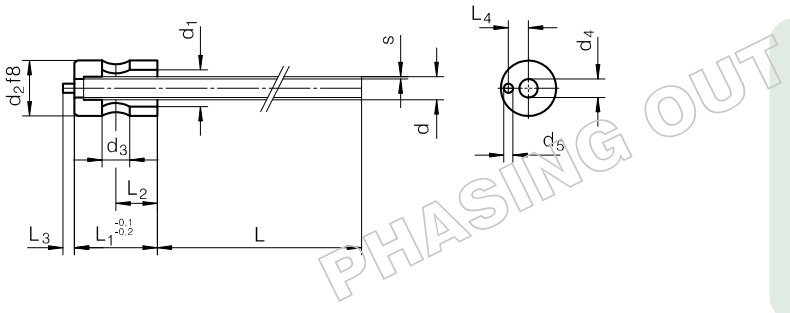
## 2550



2550 - R x L

D	S	SW	L <sub>1</sub>	T	R	L
11,5	102	7	10	2,4	1/4"	254
18,5	76	10			1/2"	203
	127	12	12	3,2	3/4"	305
102	508					

## 2551

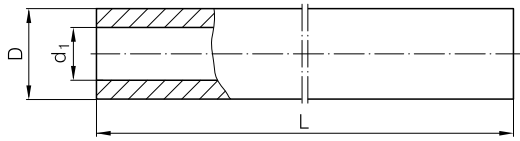


2551 - d x L

L <sub>1</sub>	L <sub>2</sub>	L <sub>3</sub>	L <sub>4</sub>	d <sub>1</sub>	d <sub>2</sub>	d <sub>3</sub>	d <sub>4</sub>	d <sub>5</sub>	s	d	L	
16	9	2,5	3,5	5	10	4	2,4	2	0,3	3	100	
				6			3			200		
18			4,5	8	12	4	0,5		5	160		
			6	12	16	6	5		315			
20			10	3	7	14	18		6	1	8	160
					8	16	20		8	10	315	
25	13	3	9,5	20	25	10	10	3	12	160		



## 2561.1



2561.1 - d<sub>1</sub> x c

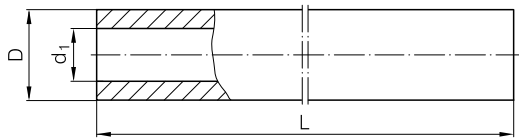
D	d <sub>1</sub>	c
17,5	10/9	
21	13	



c - Farbe / Colour / Colore / Barva



## 2561.2



2561.2 - d<sub>1</sub> x c

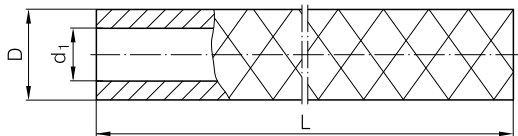
D	d <sub>1</sub>	c
17,5	10/9	
21	13	



c - Farbe / Colour / Colore / Barva



## 2561.3

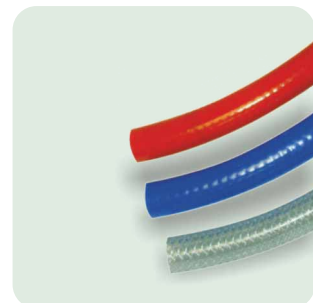


2561.3 - d<sub>1</sub> x c

D	d <sub>1</sub>	c
17,5	10/9	
21	13	

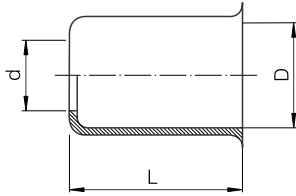


c - Farbe / Colour / Colore / Barva



	WASSER WATER ACQUA VODA		ÖL OIL OLIO OLJE		TEMPERATUR TEMPERATURE TEMPERATURA TEMPERATURA
--	----------------------------------	--	---------------------------	--	---

**2562.1**



 **2562.1 - D**

d	D
10	16
	18
13	19
	20
	23

**2562.2**



 **2562.2**

