

## ELS3 Electric height adjustment for sit-to-stand workplaces



# ELS3 Electric lifting columns at a glance

With the electrical lifting column ELS3 from SUSPA you can easily change your working position from sit to stand. The main features of the lifting columns are elegant design, quiet movement and a long adjustment range. All ELS systems have the option to have collision detection, which will stop the system automatically if an obstruction is detected.



| Model name                       | ELS3-500S-BTD-Q                                  | ELS3-500S-BTU-Q               | ELS3-650-BTD-Q                | ELS3-650-BTU-Q                         |                                        |
|----------------------------------|--------------------------------------------------|-------------------------------|-------------------------------|----------------------------------------|----------------------------------------|
| Profile                          | square version                                   |                               |                               |                                        |                                        |
| Position of big tube             | Big Tube Down (BTD)                              | Big Tube Up (BTU)             | Big Tube Down (BTD)           | Big Tube Up (BTU)                      |                                        |
| Material                         | steel profile                                    |                               |                               |                                        |                                        |
| Color                            | ● silver-gray RAL 9006                           |                               | ○ white RAL 9003              | ● black RAL 9005                       |                                        |
| Design                           | 1-stage telescopic                               | 1-stage telescopic            | 2-stage telescopic            | 2-stage telescopic                     |                                        |
| Compressed length                | 650 mm                                           | 650 mm                        | 570 mm                        | 570 mm                                 |                                        |
| Adjustment range (stroke)        | 500 mm                                           | 500 mm                        | 650 mm                        | 650 mm                                 |                                        |
| Extended length                  | 1,150 mm                                         | 1,150 mm                      | 1,220 mm                      | 1,220 mm                               |                                        |
| Maximum load                     | with controller SMART<br>with controller COMPACT | 60 kg per leg<br>-            | 60 kg per leg<br>-            | 50 kg per leg<br>60 kg per leg         | 50 kg per leg<br>60 kg per leg         |
| Adjustment speed                 | 35 mm/s                                          | 35 mm/s                       | 38 mm/s                       | 38 mm/s                                |                                        |
| Dimensions of column             | top<br>middle<br>bottom                          | 65 x 65 mm<br>-<br>70 x 70 mm | 70 x 70 mm<br>-<br>65 x 65 mm | 60 x 60 mm<br>65 x 65 mm<br>70 x 70 mm | 70 x 70 mm<br>65 x 65 mm<br>60 x 60 mm |
| Dimensions of motor casing / top | 202 x 120 x 56 mm                                |                               |                               |                                        |                                        |
| Fixing for the footbase          | 4 x M8                                           |                               |                               |                                        |                                        |



Further colors available on request



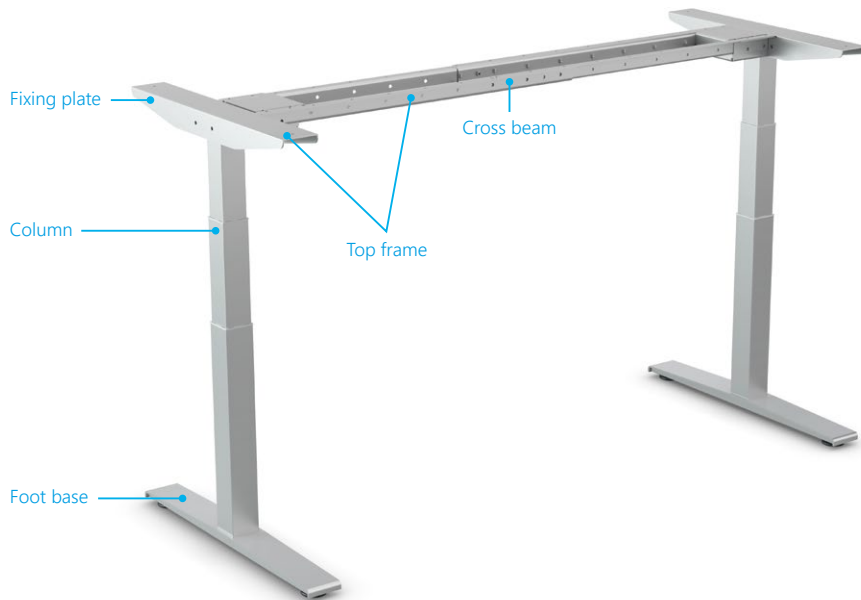
Lifting column  
rectangle version

| ELS3-500S-BTD-RE            | ELS3-500S-BTU-RE                    | ELS3-650-BTD-RE                    | ELS3-650-BTU-RE                    |
|-----------------------------|-------------------------------------|------------------------------------|------------------------------------|
| rectangle version           |                                     |                                    |                                    |
| Big Tube Down (BTD)         | Big Tube Up (BTU)                   | Big Tube Down (BTD)                | Big Tube Up (BTU)                  |
| steel profile               |                                     |                                    |                                    |
| ● graphite RAL7024          | further colors available on request |                                    |                                    |
| 1-stage telescopic          | 1-stage telescopic                  | 2-stage telescopic                 | 2-stage telescopic                 |
| 650 mm                      | 650 mm                              | 570 mm                             | 570 mm                             |
| 500 mm                      | 500 mm                              | 650 mm                             | 650 mm                             |
| 1,150 mm                    | 1,150 mm                            | 1,220 mm                           | 1,220 mm                           |
| 60 kg per leg               | 60 kg per leg                       | 50 kg per leg<br>60 kg per leg     | 50 kg per leg<br>60 kg per leg     |
| 35 mm/s                     | 35 mm/s                             | 38 mm/s                            | 38 mm/s                            |
| 101x61 mm<br>-<br>107x67 mm | 107x67 mm<br>-<br>101x61 mm         | 95x55 mm<br>101x61 mm<br>107x67 mm | 107x67 mm<br>101x61 mm<br>95x55 mm |
| 202 x 120 x 56 mm           |                                     |                                    |                                    |
| 4 x M8                      |                                     |                                    |                                    |

# Electrically adjustable table base frames

The striking feature of the SUSPA table frame is its solid design. It is suitable for a wide range of applications and easy to assemble. The frames were specifically designed for our ELS3 range of adjustable legs and can be used with different legs, controller or switches.

The adjustable table base **VariFrame** comes with a split cross beam which is variable and can be adjusted to different table top sizes.



|                   |                                   |  |
|-------------------|-----------------------------------|--|
| <b>Model name</b> | <b>Table base frame VariFrame</b> |  |
|-------------------|-----------------------------------|--|

## Top frame

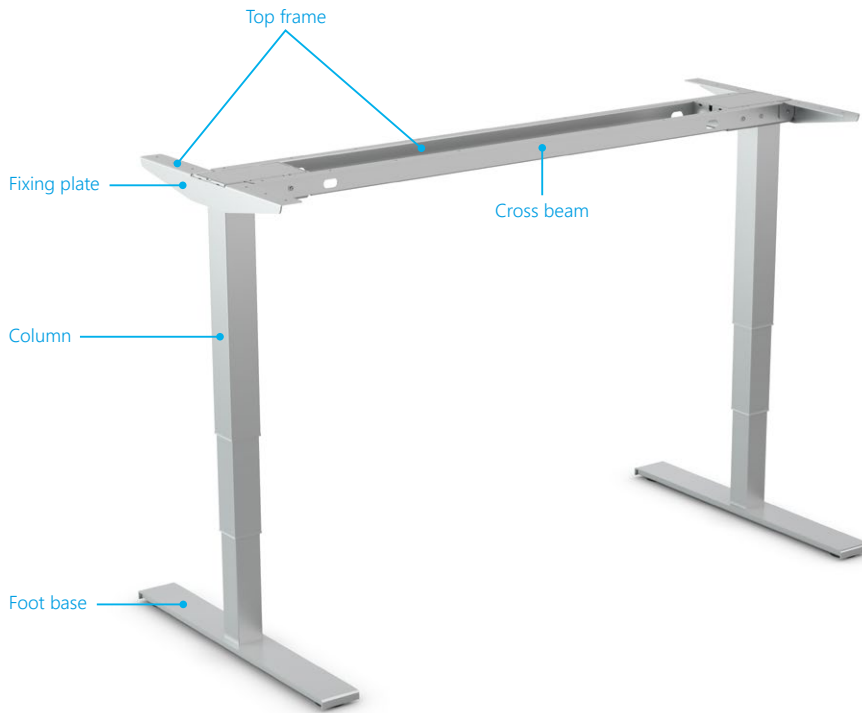
|                                                        |        |                                                                                            |
|--------------------------------------------------------|--------|--------------------------------------------------------------------------------------------|
| <b>Color</b>                                           |        | <input checked="" type="radio"/> silver-gray RAL 9006 <input type="radio"/> white RAL 9003 |
| <b>Cross beam</b>                                      | length | two-piece traverse, adjustable length of frame from 1,140 mm to 1,940 mm                   |
| <b>Desk top dimensions</b>                             | length | 1,200 - 2,000 mm                                                                           |
|                                                        | depth  | 700 - 800 mm                                                                               |
| <b>Material</b>                                        |        | steel profile                                                                              |
| <b>Fixing plate</b>                                    | length | 735 mm                                                                                     |
| <b>Adjustment range (stroke)</b><br>until top of frame |        | ELS3-500S: 700 - 1,200 mm                                                                  |
|                                                        |        | ELS3-650: 620 - 1,270 mm                                                                   |
| <b>Maximum load table frame</b>                        |        | 100 kg                                                                                     |
| <b>Adjustment speed</b>                                |        | ELS3-500S: 35 mm/s                                                                         |
|                                                        |        | ELS3-650: 38 mm/s                                                                          |
| <b>Accessories</b>                                     |        | screws, adjustable feet                                                                    |
| <b>For lifting columns</b>                             |        | can be combined with all SUSPA columns                                                     |

## Foot base

|                            |        |                                        |
|----------------------------|--------|----------------------------------------|
| <b>Type</b>                |        | FA2                                    |
| <b>For lifting columns</b> |        | can be combined with all SUSPA columns |
| <b>Dimensions</b>          | length | 750 mm                                 |
|                            | depth  | 90 mm                                  |
|                            | height | 30 mm                                  |



The table base **FixFrame** consists of a fixed cross beam, available in five different sizes. We offer control boxes and switches for the VariFrame as well as for the FixFrame (see pages 6 and 7).



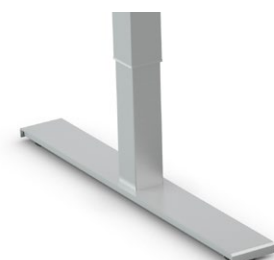
**Model name** Table base frame FixFrame

**Top frame**

|                                                        |                                                                                                                                                              |
|--------------------------------------------------------|--------------------------------------------------------------------------------------------------------------------------------------------------------------|
| <b>Color</b>                                           | <input type="radio"/> silver-gray RAL 9006 <input type="radio"/> white RAL 9003 <input type="radio"/> black RAL 9005 <input type="radio"/> graphite RAL 7024 |
| <b>Cross beam</b> length                               | fixed cross beam lengths: 1,140 mm, 1,340 mm, 1,540 mm, 1,740 mm, 1,940 mm                                                                                   |
| <b>Desk top dimensions</b> length<br>depth             | 1,200 mm, 1,400 mm, 1,600 mm, 1,800 mm, 2,000 mm<br>700 - 800 mm                                                                                             |
| <b>Material</b>                                        | steel profile                                                                                                                                                |
| <b>Fixing plate</b> length                             | 545 mm                                                                                                                                                       |
| <b>Adjustment range (stroke)</b><br>until top of frame | ELS3-500S: 680 - 1,180 mm<br>ELS3-650: 600 - 1,250 mm                                                                                                        |
| <b>Maximum load table frame</b>                        | 100 kg                                                                                                                                                       |
| <b>Adjustment speed</b>                                | ELS3-500S: 35 mm/s<br>ELS3-650: 38 mm/s                                                                                                                      |
| <b>Accessories</b>                                     | screws, adjustable feet                                                                                                                                      |
| <b>For lifting columns</b>                             | can be combined with all SUSPA columns                                                                                                                       |

**Foot base**

|                                             |                                        |
|---------------------------------------------|----------------------------------------|
| <b>Type</b>                                 | FA2                                    |
| <b>For lifting columns</b>                  | can be combined with all SUSPA columns |
| <b>Dimensions</b> length<br>depth<br>height | 750 mm<br>90 mm<br>30 mm               |



# Accessories

The highly efficient control boxes have a flat and compact design. In combination with the switches they guarantee a reliable and economical operation of the tables.

## COMPACT controller

- low standby power consumption:  $\leq 0,3$  W
- Soft-Start and Soft-Stop
- overload protection
- weight: 418 g / 523 g (3-leg-controller)
- dimensions: 264 x 103 x 37 mm
- input voltage: 230V / 50Hz
- output voltage: 288 VA (2-leg) 24 VDC / 360 VA (3-leg) 24 VDC
- operating time: 10 % at maximum load (1 min / 9 min)
- controls for EU- and US-voltage available
- external sensor collision detector possible with LOGIC-CONNECTOR



## SMART controller

- low standby power consumption:  $\leq 0,3$  W
- Soft-Start and Soft-Stop
- overload protection
- small size and flat design
- weight 305 g
- dimensions: 186 x 100 x 30 mm
- input voltage: 230V / 50Hz
- output voltage: 216 VA (2-leg) 24 VDC
- operating time: 10 % at maximum load (1 min / 9 min)
- controls for EU- and US-voltage available



## Communication and Connectivity LOGIClink

LOGIClink provides connectivity and control, allowing for communication and customization of the user's work environment.



## Power cable

- available for the control boxes COMPACT and SMART for different countries

# Switches

We provide solutions for an installation below the table and within the table top. From a simple hand switch with Up/Down function to a comfort switch with four memory functions and display – all operational elements convince through their surface design and the pleasing haptics.



Hand switch Up-Down HSM-OD-2-LD



Hand switch Memory HSU-MDF-4M2-LD



Hand switch Up-Down TOUCHbasic DN



Hand switch Memory TOUCHfx



Hand switch Up-Down, Inlay TOUCHbasic IL



Hand switch Memory, Inlay TOUCHinlay

## Ergonomics at the workplace

Over the last few years, SUSPA has become established as one of the leading suppliers of electric height adjustment systems. The topic of ergonomics at the workplace has increasingly gained importance in companies as well in recent years.

Since more and more people are experiencing back problems due to a lack of movement, it is not only the personal well being that is affected, but there is also enormous economic damage done through absences from work. The best way of countering the lack of movement in the office is to use sit-stand desks.



### **SUSPA GmbH Mechanical Applications**

Industriestr. 12 -14  
90518 Altdorf  
Germany

Phone +49 9187 930355  
Fax +49 9187 930311

infoindustry@de.suspa.com  
www.suspa.com