



Die Components  
Normalien  
Componenti























**OMCR**<sup>®</sup>  
STANDARD DIE COMPONENTS

2018.01

<p><b>39D 506</b></p>  <p>Sleeve Führungseinheit Canotto Guida</p> <p>470</p>	<p><b>39D 528</b></p>  <p>Gage Einweiser Riferimento</p> <p>470</p>	<p><b>39D 543</b></p>  <p>Brace Verlascung Bretella</p> <p>471</p>	<p><b>39D 571</b></p>  <p>Tie Rod Führungsbolzen Tirante</p> <p>471</p>	<p><b>39D 578</b></p>  <p>Backing plate Distanzkappe Reazione per cilindro</p> <p>472</p>
<p><b>39D 578</b></p>  <p>Spacing bar Abstellbolzen Distanziale</p> <p>473</p>	<p><b>39D 582</b></p>  <p>Angular guide Winkelleiste Guida angolare</p> <p>474</p>	<p><b>39D 592</b></p>  <p>Spacer Rückfalldistanz Distanziale</p> <p>475</p>	<p><b>39D 599</b></p>  <p>Tie rod Druck und Zuganker Tirante</p> <p>476</p>	<p><b>39D 599</b></p>  <p>Tie rod Druck und Zuganker Tirante</p> <p>476</p>
<p><b>39D 599</b></p>  <p>Tie rod Druck und Zuganker Tirante</p> <p>477</p>	<p><b>39D 630</b></p>  <p>Slide stop block Schieberranschlag Arresto slitta</p> <p>477</p>	<p><b>39D 630</b></p>  <p>Slide stop block Schieberranschlag Arresto slitta</p> <p>478</p>	<p><b>39D 630</b></p>  <p>Slide stop block Schieberranschlag Arresto slitta</p> <p>478</p>	<p><b>39D 638</b></p>  <p>Air pin Druckbolzen Candela</p> <p>479</p>
<p><b>39D 638</b></p>  <p>Air pin Druckbolzen Candela</p> <p>480</p>	<p><b>39D 639</b></p>  <p>Support for sensor Lagekontrolle für Platinen Supporto sensore</p> <p>481</p>	<p><b>39D 639</b></p>  <p>Gage for sensor Einweiser für Teillagekontrolle Riferimento per sensore</p> <p>481</p>	<p><b>39D 649</b></p>  <p>Shim Spannschlitz Spessore</p> <p>482</p>	<p><b>39D 650</b></p>  <p>Retainer bolt Haltebolzen Gruppo tirante</p> <p>483</p>

39D 651	39D 807	39D 807	39D 807	39D 807
Polyuretan spring Federblock Ammortizzatore	Gage Einweiser Riferimento	Gage Feineinweiser Riferimento di precisione	Gage Einweiser Riferimento	Gage Einweiser Riferimento
484	484	485	485	486
39D 826	39D 828	39D 828	39D 828	39D 828
Key Passfeder Chiavetta	Spacer group Ansatzbuchse Gruppo distanziale	Washer Scheibe Rondella	Elastomer washer Dämpfungscheibe Ammortizzatore	Spacer group Ansatzbuchse Gruppo distanziale
487	487	488	488	489
39D 839	39D 847	39D 847	39D 851	39D 851
Lifting bracket with pin Tragwange mit Tragbolzen Staffa di sollevamento completa di perno	Block Druckplatten für Gasdruckfedern Reazione per cilindro	Block Druckplatten für Gasdruckfedern Reazione per cilindro	Sliding pin Führungssäule Perno scorrevole	Sliding pin Führungssäule Perno scorrevole
490	491	491	492	492
39D 854	39D 854	39D 855	39D 856	39D 860
 <b>RANGE EXTENSION</b>				
Pad retainer pin Steckbolzen Perno di arresto	Pad retainer pin Steckbolzen Perno di arresto	Bush Dämpfungsbuchse Boccola	Retainer Sicherungsplatte Piastrina	Bush DIN 9834 Buchse DIN 9834 Boccola DIN 9834
493	494	495	495	496

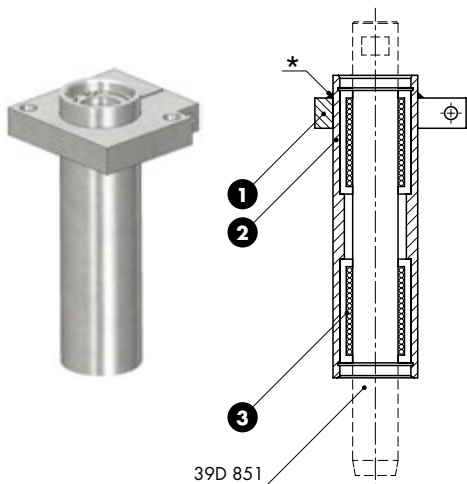
<p><b>39D 861</b></p>  <p>Toe clamp Haltestück Ritegno per boccola</p> <p>496</p>	<p><b>39D 862</b></p>  <p>Guide post DIN 9833 Führungssäule DIN 9833 Colonna guida DIN 9833</p> <p>497</p>	<p><b>39D 862</b></p>  <p>Guide post DIN 9833 Führungssäule DIN 9833 Colonna guida DIN 9833</p> <p>498</p>	<p><b>39D 863</b></p>  <p>Wear plate VDI 3357 Gleitplatte VDI 3357 Piastra guida VDI 3357</p> <p>499</p>	<p><b>39D 863</b></p>  <p>Wear plate VDI 3357 Gleitplatte VDI 3357 Piastra guida VDI 3357</p> <p>500</p>
<p><b>39D 866</b></p>  <p>Lifting pin Tragbolzen mit Fallringsicherung Perno di sollevamento</p> <p>501</p>	<p><b>39D 866</b></p>  <p>Lifting pin Tragbolzen mit Fallringsicherung Perno di sollevamento</p> <p>502</p>	<p><b>39D 867</b></p>  <p>Bush for lifting pin Buchse für Tragbolzen Boccola per perno di sollevamento</p> <p>503</p>	<p><b>39D 869</b></p>  <p>Washer Scheibe Rondella</p> <p>504</p>	<p><b>39D 870</b></p>  <p>Air cylinder fixing Verschraubung Fissaggio cilindro</p> <p>504</p>
<p><b>39D 872</b></p>  <p>Cam roller Rollenbock Supporto con rullo</p> <p>505</p>	<p><b>39D 873</b></p>  <p>Acceleration cam Schiebervorbeschleunigung Camma di accelerazione</p> <p>506</p>	<p><b>39D 876</b></p>  <p>Lifting bracket VDI 3366 Tragzapfen VDI 336 Staffa di sollevamento VDI 336</p> <p>507</p>	<p><b>39D 882</b></p>  <p>Air cylinder fixing Ziehteilheber Fissaggio cilindro</p> <p>508</p>	<p><b>39D 887</b></p>  <p>Air cylinder adapter Teilheber Adattatore per cilindro</p> <p>508</p>
<p><b>39D 887</b></p>  <p>Air cylinder adapter Teilheber Adattatore per cilindro</p> <p>508</p>	<p><b>39D 890</b></p>  <p>Wear plate self-lubricating Deckleiste bronze mit festschmierstoff Piastra guida autolubrificante</p> <p>509</p>	<p><b>39D 890</b></p>  <p>Wear plate Deckleiste Schieberführung Piastra guida</p> <p>510</p>	<p><b>39D 890</b></p>  <p>Wear plate Deckleiste Schieberführung Piastra guida</p> <p>511</p>	<p><b>39D 892</b></p>  <p>Guide bar VDI 3357 Führungsleiste VDI 3357 Lardone VDI 3357</p> <p>512</p>

39D 894	39D 894	39D 895	39D 896	39D 896
				
Cam dwell wear plate VDI 3357 Überlaufkeile VDI 3357 Cuneo VDI 3357	Cam dwell wear plate VDI 3357 Überlaufkeile VDI 3357 Cuneo VDI 3357	Key Passfeder Chiavetta	Compensation pin group Ausgleichsdruckbolzen Gruppo perno di compensazione	Compensation pin group Ausgleichsdruckbolzen Gruppo perno di compensazione
513	514	515	516	516
39D 896	39D 896	39D 896	39D 896	39D 896
				
Compensation pin group Ausgleichsdruckbolzen Gruppo perno di compensazione	Compensation pin group Ausgleichsdruckbolzen Gruppo perno di compensazione	Backing plate Distanzkappe Reazione per cilindro	Retainer Sicherungsplatte Piastrina	Retainer Sicherungsplatte Piastrina
517	517	518	518	518
39D 896	39D 951	39D 951	39D 952	39D 952
				
Retainer Sicherungsplatte Piastrina	Air pin Unterluftbolzen Candela	Air pin Unterluftbolzen Candela	"V" driver VDI 3357 Prismenführung VDI 3357 Guida a "V" VDI 3357	"V" driver VDI 3357 Prismenführung VDI 3357 Guida a "V" VDI 3357
519	520	521	522	522
39D 952	39D 952	39D 954	39D 954	39D 954
				
"V" driver VDI 3357 Prismenführung mit festschmierstoff VDI 3357 Guida a "V" VDI 3357	"V" driver VDI 3357 Prismenführung mit festschmierstoff VDI 3357 Guida a "V" VDI 3357	Wear plate VDI 3357 Gleitplatte VDI 3357 Piastra guida VDI 3357	Wear plate VDI 3357 Gleitplatte VDI 3357 Piastra guida VDI 3357	Wear plate VDI 3357 Gleitplatte VDI 3357 Piastra guida VDI 3357
523	523	524	525	526

<p><b>39D 956</b></p>	<p><b>39D 958</b></p>	<p><b>39D 969</b></p>	<p><b>39D 972</b></p>	<p><b>39D 976</b></p>
				
<p>Guide bush Führungsbuchse Boccola autolubrificante</p>	<p>Stop pin Haltebolzen Perno di arresto</p>	<p>Guide post DIN 9833 Führungssäule DIN 9833 Colonna guida tipo DIN 9833</p>	<p>Lifter Federbolzen Sollevatore</p>	<p>Spacer plate toothed Distanzplatte gezahnt Tassello di compensazione</p>
<p>527</p>	<p>527</p>	<p>528</p>	<p>529</p>	<p>530</p>
<p><b>39D 993</b></p>	<p><b>39D 995</b></p>	<p><b>39D 995</b></p>	<p><b>39D 995</b></p>	<p><b>39D 1392</b></p>
				
<p>Plate for sensor Halterung Piastrina portasensore</p>	<p>Spacer Distanzstück Distanziale</p>	<p>Washer/stop block Scheibe/halteplatte Rondella/tassello</p>	<p>Retainer pin Ziehteilheber Perno con rondella</p>	<p>Distributor Verteilerblocke Distributore</p>
<p>531</p>	<p>531</p>	<p>532</p>	<p>532</p>	<p>533</p>
<p><b>39D 1430</b></p>	<p><b>39D 1497</b></p>	<p><b>39V 863</b></p>	<p><b>39V 1071</b></p>	<p><b>39V 1159</b></p>
				
<p>Distributor Verteilerblocke Distributore</p>	<p>Distributor Verteilerblocke Distributore</p>	<p>Visual locator setting punch Stempel f. entgasungsnoppen Punzone di visualizzazione</p>	<p>Threaded bush Genwindebuchse Boccola filettata</p>	<p>Gib VDI 3387 Führungslasche VDI 3387 Guida VDI 3387</p>
<p>533</p>	<p>533</p>	<p>534</p>	<p>534</p>	<p>535</p>
<p><b>39V 1162</b></p>	<p><b>39V 1162</b></p>	<p><b>39V 1168</b></p>	<p><b>39V 1176</b></p>	<p><b>39V 1178</b></p>
				
<p>Stop block Abstandsblock Distanziale</p>	<p>Stop block Abstandsblock Distanziale</p>	<p>Locating cone Kegeldistanz Cono di centraggio</p>	<p>Coil spring Schraubenfedern Molla a filo</p>	<p>Stripper for blanking dies Abstreifer für Platinenschnitte Estrattore per stampi</p>
<p>536</p>	<p>536</p>	<p>537</p>	<p>538</p>	<p>539</p>

39V 1199	39V 1205	39V 1234	39V 1242	39V 1254
				
Lifting pin VDI 3366 Tragschraube VDI 3366 Perno di sollevamento VDI 3366	Locating pin Zentrierbolzen Centraggio	Ejector Abdrückstift Espulsore	Gage Einweiser Riferimento	Locating block Fangbacke Tassello di centraggio
540	540	541	542	542
39V 1304	39V 1304	39V 1569	39V 1569	39V 1569
				
Key Passfeder Chiavetta	Key Passfeder Chiavetta	Roller stock lifter Federnde laufrolle Rullino sollevamento nastro	Roller stock lifter Federnde laufrolle Rullino sollevamento nastro	Roller stock lifter Federnde laufrolle Rullino sollevamento nastro
543	543	544	545	546
<b>1D 301260</b>				
				
Gage with position control Klappenweiser mit Lagekontrolle Riferimento con controllo di posizione				
547				

SLEEVE - FÜHRUNGSEINHEIT - CANOTTO GUIDA



Notes

- 1 Material: St37
- 2 Material: CK45
- 3 Linear ball bearing



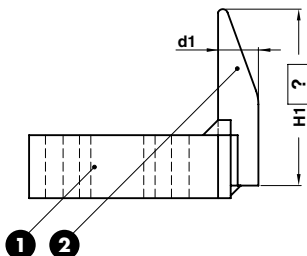
\* Fixing at assembly with 3 spot welding  
Bei der montage mit schweißpunkten befestigen  
Fissare al montaggio con tre punti di saldatura



VW CODE
39D 506/10

VW CODE
39D 506/10

GAGE - EINWEISER - RIFERIMENTO



Notes

- 1 Material: St37
- 2 Material: CK15 - HRC: 58÷60

Only for replacement  
Nur für Reparatur  
Solo per riparazione

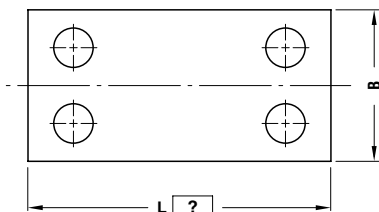


VW CODE	H1=200
39D 528/3	200

VW CODE	d1
39D 528/1	16
39D 528/2	20
39D 528/3	25



BRACE - VERLASCUNG - BRETELLA



Notes

Material: CK45



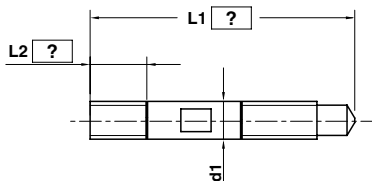
VW CODE	L=200
39D 543/2	200

VW CODE	B
39D 543/1	80
39D 543/2	100

Standard VW/Audi

39D 571

TIE ROD - FÜHRUNGSBOLZEN - TIRANTE



Notes

Material: 9SMn28



VW CODE	L1=300	L2=100
39D 571/13	300	100

VW CODE	d1
39D 571/10	10
39D 571/13	13
39D 571/16	16
39D 571/20	20

## BACKING PLATE - DISTANZKAPPE - REAZIONE PER CILINDRO



## Notes

**Material:** 16MnCr5 - **HRC:** 60÷62  
 Only for replacement  
 Nur für Reparatur  
 Solo per riparazione



<b>VW CODE</b>
39D 578/2

<b>VW CODE</b>
----------------

39D 578/2
-----------

## BACKING PLATE - DISTANZKAPPE - REAZIONE PER CILINDRO



## Notes

**Material:** CK45



<b>VW CODE</b>
39D 578/56

<b>VW CODE</b>	<b>d1</b>
----------------	-----------

39D 578/55	90
------------	----

39D 578/56	100
------------	-----

## BACKING PLATE - DISTANZKAPPE - REAZIONE PER CILINDRO



## Notes

**Material:** CK45

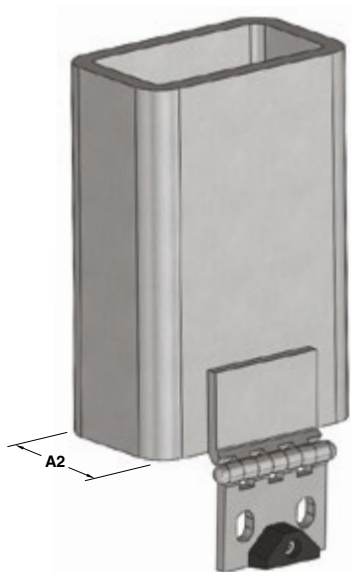


<b>VW CODE</b>
39D 578/65

<b>VW CODE</b>
----------------

39D 578/65
------------

SPACING BAR - ABSTELLBOLZEN - DISTANZIALE



L max. = 400

Notes

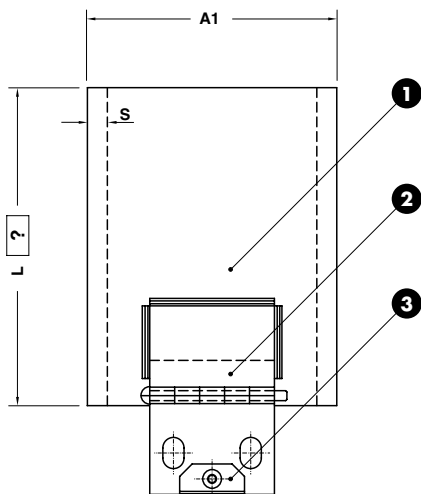
- 1 Material: St37
- 2 AHA Hinge\*\*\*
- 3 Material: Elastomer 68SH



\* To storage dies without gas springs  
 Zum Abstellen von Presswerkzeugen ohne Gasdruckfedern  
 Per il deposito di stampi senza molla a gas

\*\* To storage dies with gas springs  
 Zum Abstellen von Presswerkzeugen mit Gasdruckfedern  
 Per il deposito di stampi con molla a gas

\*\*\* Scharnier  
 Cerniera



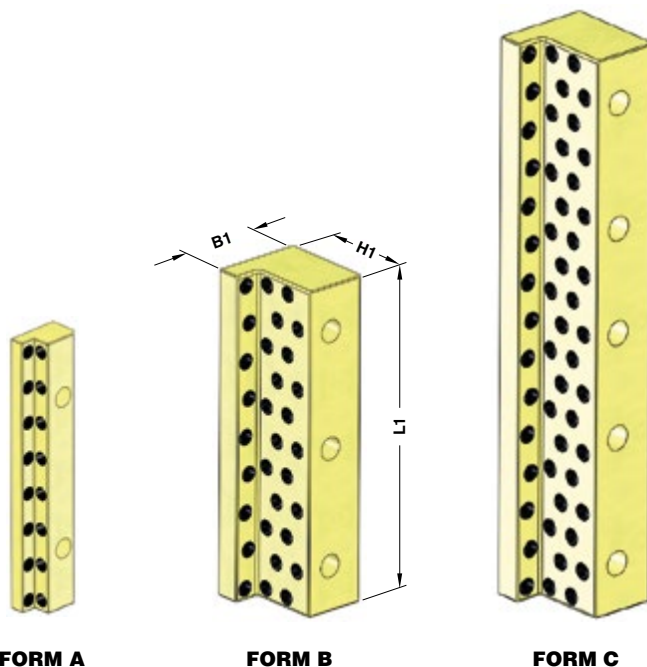
ORDER EXAMPLE	VW CODE	L=150
	39D 578/30	150

VW CODE	A1	A2	S
39D 578/30*	100	60	7-8
39D 578/40**	70	50	3

ANGULAR GUIDE - WINKELLEISTE - GUIDA ANGOLARE

Notes

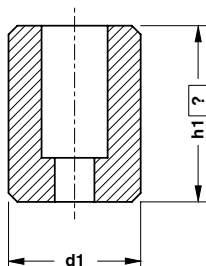
**Material:** Bronze + Graphite  
**HB** > 190



ORDER EXAMPLE	VW CODE
	39D 582/1

VW CODE	L1	B1	H1	FORM	VW CODE	L1	B1	H1	FORM
39D 582/1	125	25	15	A	39D 582/12	200	70	75	A
39D 582/2	160	25	15	A	39D 582/13	250	70	75	B
39D 582/3	125	32	30	A	39D 582/15	400	70	75	C
39D 582/4	160	32	30	A	39D 582/16	160	85	90	A
39D 582/5	200	32	30	A	39D 582/17	200	85	90	A
39D 582/6	100	55	55	A	39D 582/18	250	85	90	B
39D 582/7	160	55	55	A	39D 582/20	400	85	90	C
39D 582/11	160	70	75	A					

SPACER - RÜCKFALLDISTANZ - DISTANZIALE



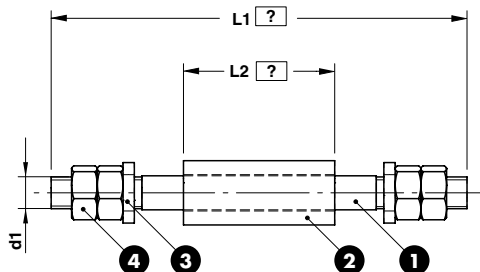
**Notes**  
**Material:** CK45



	<b>VW CODE</b>	<b>h1=30</b>
	39D 592/11	30
<b>VW CODE</b>		<b>d1</b>
39D 592/10	25	
39D 592/11	30	
39D 592/12	40	
39D 592/13	50	

Standard VW/Audi

TIE ROD - DRUCK UND ZUGANKER - TIRANTE



Notes

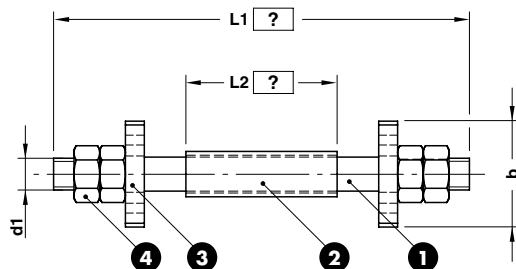
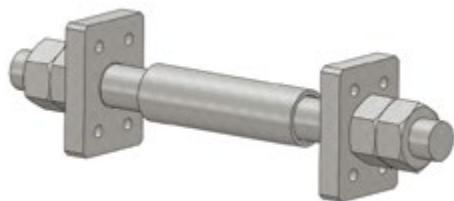
- 1 Material: 34Cr4
- 2 Material: St37
- 3 Material: CK45
- 4 DIN 934



ORDER EXAMPLE	VW CODE	L1=550	L2=200
	39D 599/1	550	200

VW CODE	d1
39D 599/1	M42x1,5

TIE ROD - DRUCK UND ZUGANKER - TIRANTE



Notes

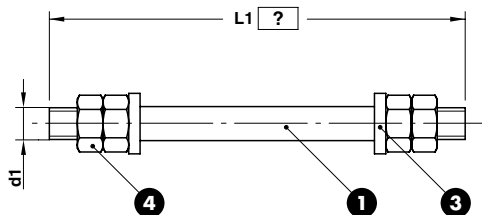
- 1 Material: 34Cr4
- 2 Material: St37
- 3 Material: CK45
- 4 DIN 934



ORDER EXAMPLE	VW CODE	L1=550	L2=200
	39D 599/2B	550	200

VW CODE	b	d1
39D 599/2	140	M42x1,5
39D 599/5	160	M42x1,5

TIE ROD - DRUCK UND ZUGANKER - TIRANTE



Notes

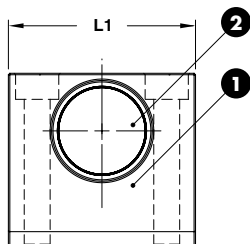
- 1 Material: 34Cr4
- 3 Material: CK45
- 4 DIN 934



ORDER EXAMPLE	VW CODE	L1=550
	39D 599/3	550
VW CODE		d1
39D 599/3		M42 x 1.5
39D 599/4		M56 x 1.5

Standard VW/Audi

SLIDE STOP BLOCK - SCHIEBERRANSCHLAG - ARRESTO SLITTA



Notes

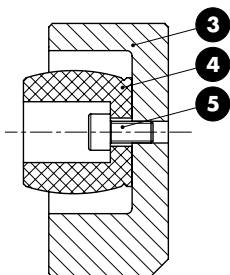
- 1 Material: CK45
- 2 Material: Elastomer 90 SH

Only for replacement  
Nur für Reparatur  
Solo per riparazione



ORDER EXAMPLE	VW CODE
	39D 630/8
VW CODE	
L1	
39D 630/8	65
39D 630/10	75

## SLIDE STOP BLOCK - SCHIEBERRANSCHLAG - ARRESTO SLITTA



## Notes

- 3 **Material:** CK45
- 4 **Material:** CO-Polyester Elastomer
- 5 M6x12 DIN 912



VW CODE

39D 630/20

VW CODE

39D 630/20

## SLIDE STOP BLOCK - SCHIEBERRANSCHLAG - ARRESTO SLITTA



## Notes

**Material:** CK45

VW CODE

39D 630/21

VW CODE

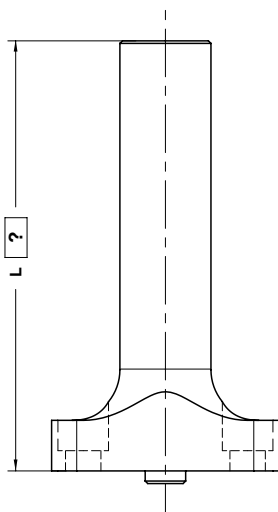
39D 630/21



AIR PIN - DRUCKBOLZEN - CANDELA



39D 638/2



L max = 360

Notes

**Material:** CK45 - 800÷1000 N/mm<sup>2</sup>

Only for replacement

Nur für Reparatur

Solo per riparazione



VW CODE	L=150
39D 638/3	150

VW CODE

39D 638/2
39D 638/3
39D 638/4
39D 638/5

Standard VW/Audi



39D 638/3



39D 638/4

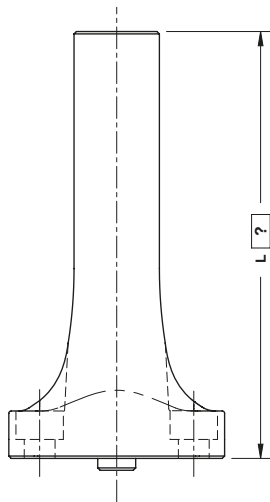


39D 638/5

AIR PIN - DRUCKBOLZEN - CANDELA



39D 638/10



L max = 360

Notes

Material: C45 - 800÷1000 N/mm<sup>2</sup>



39D 638/11

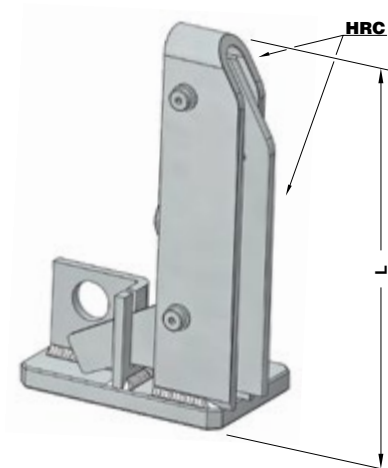


39D 638/12

ORDER EXAMPLE	VW CODE	L=150
	39D 638/11	150

VW CODE
39D 638/10
39D 638/11
39D 638/12

## SUPPORT FOR SENSOR - LAGEKONTROLLE FÜR PLATINEN - SUPPORTO SENSORE



## Notes

**Material:** Steel - **HRC:** 58÷60

**STOCK**

\* As shown in drawing  
Gemäß zeichnung  
Come a disegno

\*\* Opposite to drawing  
Spiegelverkehrt  
Opposto al disegno



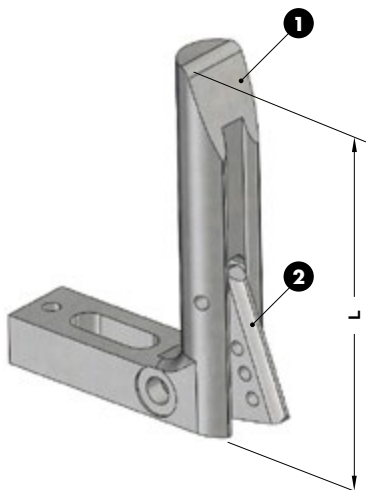
**VW CODE**

**39D 639/3**

VW CODE	L	SIDE
39D 639/1	145	LEFT **
39D 639/2	145	RIGHT *
39D 639/3	185	LEFT **
39D 639/4	185	RIGHT *
39D 639/25	225	LEFT **
39D 639/26	225	RIGHT *

Standard VW/Audi

## GAGE FOR SENSOR - EINWEISER FÜR TEILLAGEKONTROLLE - RIFERIMENTO PER SENSORE



## Notes

**1** **Material:** CK60

**2** **Material:** Si37

**STOCK**

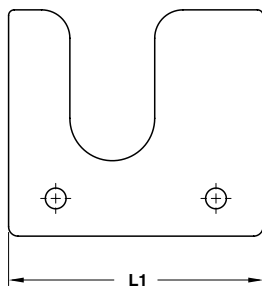


**VW CODE**

**39D 639/22**

VW CODE	L
39D 639/20	120
39D 639/21	150
39D 639/22	180
39D 639/23	250

## SHIM - SPANNSCHLITZ - SPESSORE



## Notes

**Material:** St52

STOCK



VW CODE

39D 649/2

VW CODE

L1

39D 649/1

110

39D 649/2

135

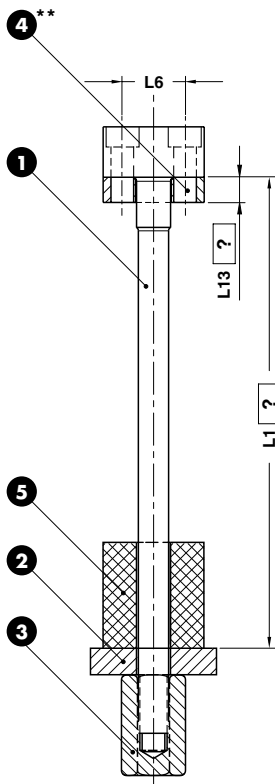
39D 649/3

185

39D 649/4

160

## RETAINER BOLT - HALTEBOLZEN - GRUPPO TIRANTE



Respect the max. load  
 Maximale Nutzlast beachten  
 Rispettare il carico max.

### Notes

- 1 Material:** 34Cr4
- 2 3 4 Material:** CK45
- 5 Material:** Elastomer Black 68 SH  
 Elastomer Red 90 SH

Only for replacement  
 Nur für Reparatur  
 Solo per riparazione



\*Max. capacity load  
 Belastbarkeit max.  
 Portata massima

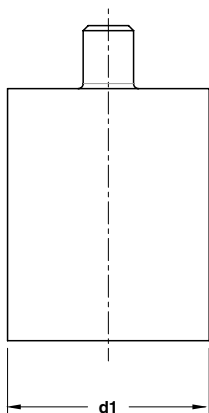
\*\*Optional washer, L13=?  
 Scheibe optional, L13=?  
 Rondella opzionale, L13=?

Standard VW/Audi

ORDER EXAMPLE	VW CODE	L1=190	L13=10**
	39D 650/32	190	10

VW CODE	L6	MCL*(N)	Elastomer Shore (SH)	VW CODE	L6	MCL*(N)	Elastomer Shore (SH)
39D 650/1	-	15000	68	39D 650/31	25	15000	68
39D 650/2	-	25000	68	39D 650/32	30	25000	68
39D 650/3	-	25000	68	39D 650/33	30	25000	68
39D 650/4	-	45000	68	39D 650/34	34	45000	68
39D 650/5	-	15000	90	39D 650/35	25	15000	90
39D 650/6	-	25000	90	39D 650/36	30	25000	90
39D 650/7	-	25000	90	39D 650/37	30	25000	90
39D 650/8	-	45000	90	39D 650/38	34	45000	90

## POLYURETAN SPRING - FEDERBLOCK - AMMORTIZZATORE



## Notes

**Material:** Elastomer 92 SH

STOCK

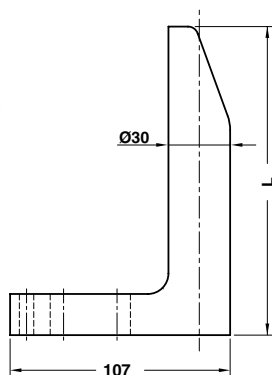


VW CODE

39D 651/2

VW CODE	d1
39D 651/1	63
39D 651/2	80
39D 651/3	100
39D 651/4	125

## GAGE - EINWEISER - RIFERIMENTO



## Notes

**Material:** CK60

STOCK

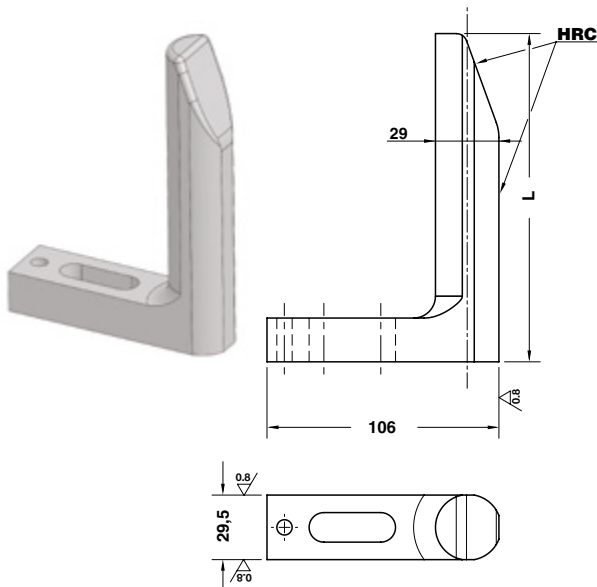


VW CODE

39D 807/1 L=90

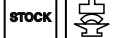
VW CODE	L
39D 807/1 L=65	65
39D 807/1 L=90	90
39D 807/1 L=120	120
39D 807/1 L=150	150
39D 807/1 L=180	180
39D 807/1 L=250	250
39D 807/1 L=300	300
39D 807/1 L=350	350

PRECISION GAGE - FEINENWEISER - RIFERIMENTO DI PRECISIONE



Notes

Material: CK60 - HRC: 58÷60



VW CODE

39D 807/2 L=90

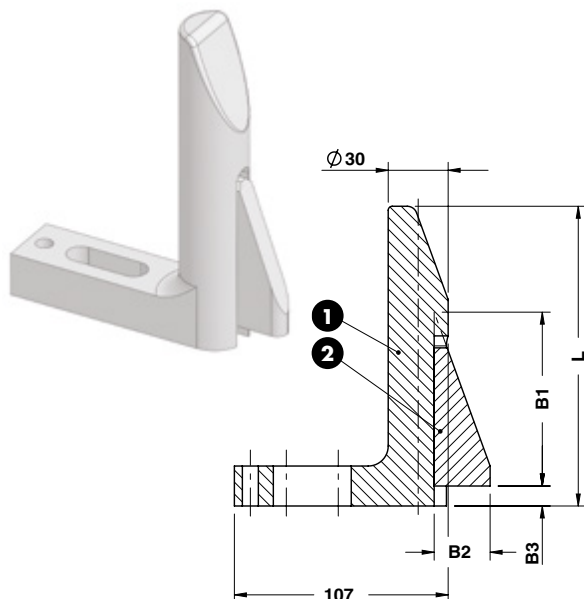
VW CODE

L

39D 807/2 L=65	65
39D 807/2 L=90	90
39D 807/2 L=120	120
39D 807/2 L=150	150
39D 807/2 L=180	180
39D 807/2 L=250	250
39D 807/2 L=300	300
39D 807/2 L=350	350

Standard VW/Audi

GAGE HARDENED - EINWEISER GEHÄRTET - RIFERIMENTO INDURITO



Notes

1 2

Material: CK60 - HRC: 58÷60



VW CODE

39D 807/3 L=90

B1=50

B2=20

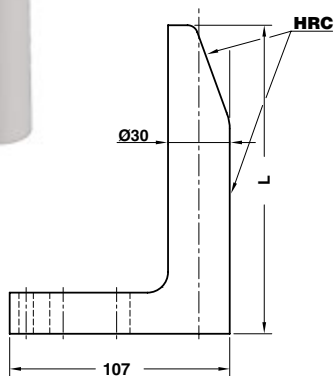
B3=5

VW CODE

L

39D 807/3 L=65	65
39D 807/3 L=90	90
39D 807/3 L=120	120
39D 807/3 L=150	150
39D 807/3 L=180	180
39D 807/3 L=250	250
39D 807/3 L=300	300
39D 807/3 L=350	350

## GAGE HARDENED - EINWEISER GEHÄRTET - RIFERIMENTO INDURITO



## Notes

**Material:** CK60 - **HRC:** 58÷60

STOCK



VW CODE	
39D 807/4 L=90	
VW CODE	L
39D 807/4 L=65	65
39D 807/4 L=90	90
39D 807/4 L=120	120
39D 807/4 L=150	180
39D 807/4 L=180	150
39D 807/4 L=250	250
39D 807/4 L=300	300
39D 807/4 L=350	350



KEY - PASSFEDER - CHIAVETTA

Notes

Material: CK45+C

STOCK



VW CODE

39D 826

VW CODE

39D 826

Standard VW/Audi

SPACER GROUP - ANSATZBUCHSE - GRUPPO DISTANZIALE

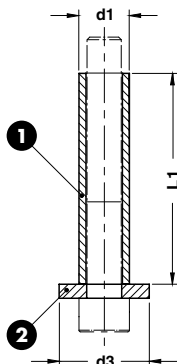
Notes

1 Material: St37

2 Material: CK45

Screws not included

STOCK

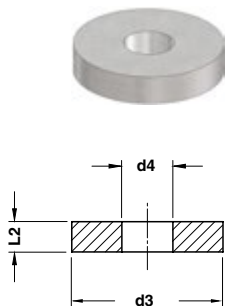


VW CODE

39D 828/5

VW CODE	d1 x L1	d3	VW CODE	d1 x L1	d3	VW CODE	d1 x L1	d3
39D 828/4	16 x 40	25	39D 828/12	20 x 100	30	39D 828/20	36 x 80	55
39D 828/5	16 x 50	25	39D 828/13	25 x 63	38	39D 828/21	36 x 100	55
39D 828/6	16 x 63	25	39D 828/14	25 x 80	38	39D 828/22	36 x 125	55
39D 828/8	16 x 100	25	39D 828/15	25 x 100	38	39D 828/23	42 x 80	65
39D 828/9	20 x 50	30	39D 828/16	25 x 125	38	39D 828/24	42 x 100	65
39D 828/10	20 x 63	30	39D 828/17	30 x 80	45	39D 828/25	42 x 125	65
39D 828/11	20 x 80	30	39D 828/19	30 x 125	45			

## WASHER - SCHEIBE - RONDELLA



### Notes

**Material:** CK45

**STOCK**

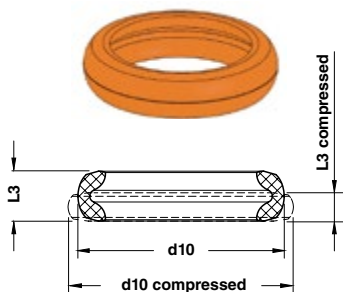


**VW CODE**

**39D 828/42**

VW CODE	d3	d4	L2
39D 828/41	25	10,5	5
39D 828/42	30	13,2	5
39D 828/43	38	17,0	6
39D 828/44	45	21,0	8
39D 828/45	55	25,0	10
39D 828/46	30	10,5	5
39D 828/47	35	13,0	5
39D 828/48	50	17,0	6
39D 828/49	65	21,0	8
39D 828/50	70	25,0	10
39D 828/57	65	32,0	15
39D 828/58	90	32,0	15

## ELASTOMER WASHER - DÄMPFUNGSCHEIBE - AMMORTIZZATORE



### Notes

**Material:** CO-Polyester Elastomer

**STOCK**

\*Die höchste Belastung  
Carico massimo ammissibile

\*\*Komprimiert  
Compresso

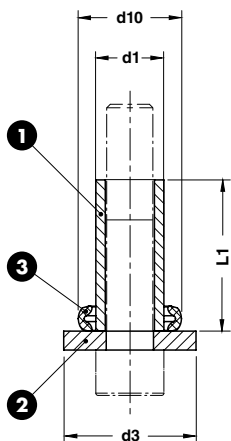


**VW CODE**

**39D 828/52**

VW CODE	d10	d10 (compressed**)	L3	L3 (compressed**)	Shore	Load* (N)
39D 828/51	26,2	28,4	7,8 ±0,3	5,5 ±0,3	55D	5500
39D 828/52	32,1	35,1	10,8 ±0,3	6,0 ±0,3	72D	9000
39D 828/53	46,3	49,8	17,0 ±0,4	11,6 ±0,3	72D	20000
39D 828/54	54,6	61,8	21,3 ±0,4	13,0 ±0,3	55D	30000
39D 828/55	61,8	69,9	21,5 ±0,4	13,2 ±0,3	55D	46000
39D 828/56	78,2	89,0	29,8 ±0,5	17,9 ±0,3	55D	75000

SPACER GROUP - ANSATZBUCHSE - GRUPPO DISTANZIALE



Notes

- 1 Material: St37
  - 2 Material: CK45
  - 3 Material: CO-Polyester Elastomer
- Screws not included



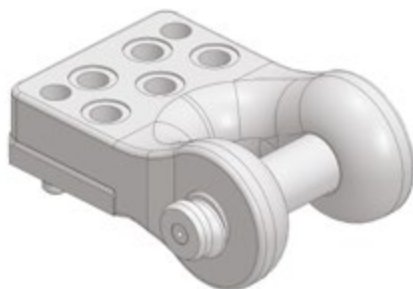
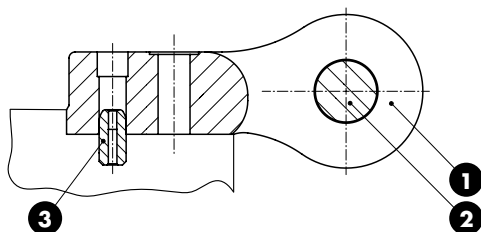
Standard VW/Audi



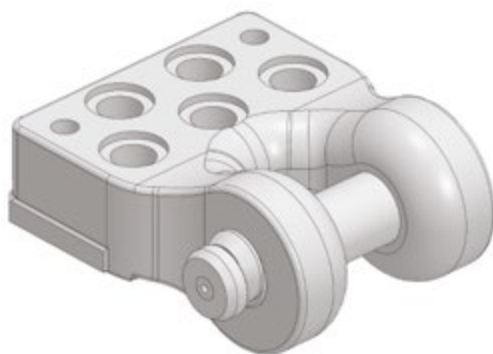
VW CODE  
39D 828/74

VW CODE	d1 x L1	d3	d10	Shore	VW CODE	d1 x L1	d3	d10	Shore
39D 828/73	16 x 40	30	26,2	55D	39D 828/84	25 x 100	50	46,3	72D
39D 828/74	16 x 50	30	26,2	55D	39D 828/85	25 x 125	50	46,3	72D
39D 828/75	16 x 63	30	26,2	55D	39D 828/86	30 x 80	65	54,6	55D
39D 828/77	16 x 100	30	26,2	55D	39D 828/88	30 x 125	65	54,6	55D
39D 828/78	20 x 50	35	32,1	72D	39D 828/89	36 x 80	70	61,8	55D
39D 828/79	20 x 63	35	32,1	72D	39D 828/90	36 x 100	70	61,8	55D
39D 828/80	20 x 80	35	32,1	72D	39D 828/91	36 x 125	70	61,8	55D
39D 828/81	20 x 100	35	32,1	72D	39D 828/92	42 x 80	90	78,2	55D
39D 828/82	25 x 63	50	46,3	72D	39D 828/93	42 x 100	90	78,2	55D
39D 828/83	25 x 80	50	46,3	72D	39D 828/94	42 x 125	90	78,2	55D

**LIFTING BRACKET WITH PIN AND LOCATING PINS**  
**TRAGWANGE MIT TRAGBOLZEN UND ZENTRIERBOLZEN**  
**STAFFA DI SOLLEVAMENTO COMPLETA DI PERNO E CENTRAGGI**



FORM A



FORM B



Respect the max load  
 Maximale Nutzlast beachten  
 Rispettare il carico Max

**WARNING - ACHTUNG - ATTENZIONE:**  
 For safety reason, please consider always that the weight of the die has to be supported by just 2 lifting brackets.

Aus Sicherheitsgründen stets berücksichtigen, dass zwei Tragwagen das gesamte Werkzeuggewicht tragen müssen.

Per ragioni di sicurezza, considerare sempre che il peso dello stampo deve essere sopportato da 2 sole staffe.

## Notes

- 1 **Material:** St52
- 2 39D 866 - **Material:** CK45
- 3 39V 1205/1  
**Material:** 16MnCr5 - **HRC:** 58÷62

Screws not included

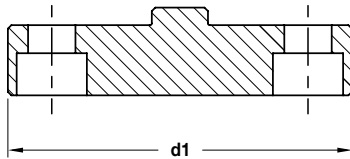


VW CODE

39D 839/2

VW CODE	Max load (kg)	Max die weight (kg)	FORM
39D 839/1	8000	16000	A
39D 839/2	12500	25000	B

## BLOCK - DRUCKPLATTEN FÜR GASDRUCKFEDERN - REAZIONE PER CILINDRO



## Notes

**Material:** 90MnCrV8 - **HRC:** 58÷60

STOCK



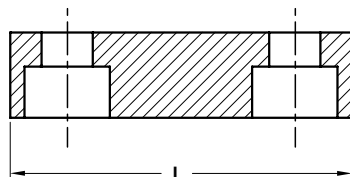
## VW CODE

39D 847/2

VW CODE	d1
39D 847/1	98
39D 847/2	113
39D 847/3	128
39D 847/4	143

Standard VW/Audi

## BLOCK - DRUCKPLATTEN FÜR GASDRUCKFEDERN - REAZIONE PER CILINDRO



## Notes

**Material:** 16MnCr5 - **HRC:** 58÷60

STOCK

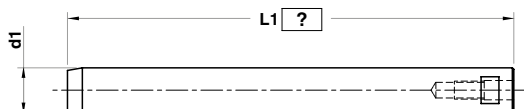


## VW CODE

39D 847/11

VW CODE	L
39D 847/10	40
39D 847/11	60
39D 847/12	70
39D 847/13	100
39D 847/14	140

## SLIDING PIN - FÜHRUNGSSÄULE - PERNO SCORREVOLE



## Notes

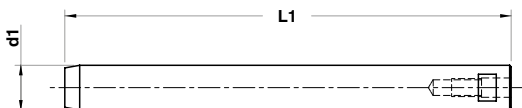
**Material:** CK45 - HRC: 60÷62



VW CODE	L1=300
39D 851/20	300

VW CODE	d1
39D 851/20	20
39D 851/25	25
39D 851/30	30

## SLIDING PIN - FÜHRUNGSSÄULE - PERNO SCORREVOLE



## Notes

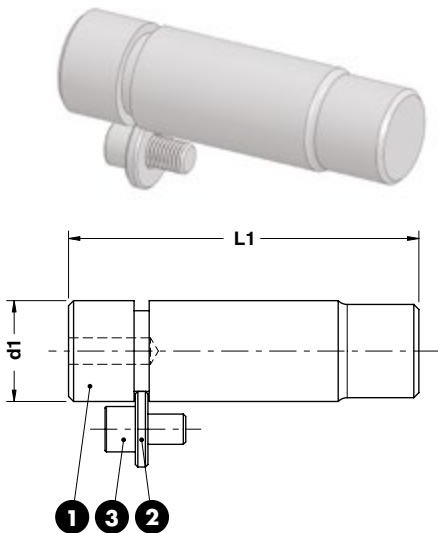
**Material:** CK45 - HRC: 60÷62



VW CODE
39D 851/32

VW CODE	d1	L1
39D 851/32	30	270
39D 851/34	30	425

PAD RETAINER PIN - STECKBOLZEN - PERNO DI ARRESTO



**Notes**

- 1 **Material:** 42CrMo4 - 1000 N/mm<sup>2</sup>
- 2 39D 828/42
- 3 DIN EN ISO 4762 M12x20

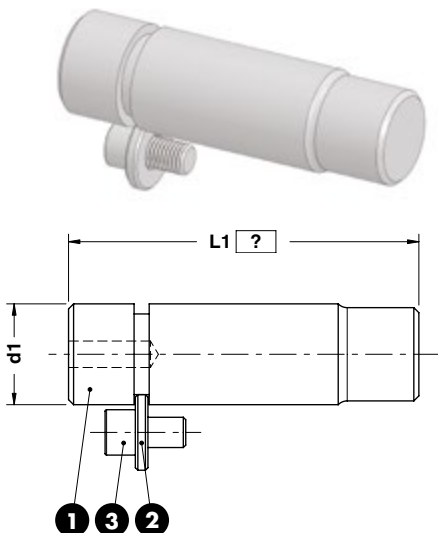


ORDER EXAMPLE	VW CODE
	39D 854/2

VW CODE	d1	L1
39D 854/1	32	105
39D 854/2	32	122
39D 854/3	40	139
39D 854/4	40	159
39D 854/5	50	167
39D 854/6	50	192
39D 854/7	63	202
39D 854/8	63	237

Standard VW/Audi

PAD RETAINER PIN - STECKBOLZEN - PERNO DI ARRESTO



**Notes**

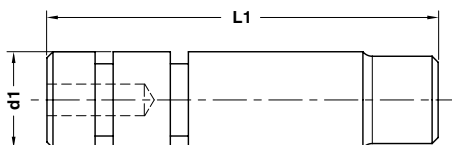
- 1 **Material:** 42CrMo4 - 1000 N/mm<sup>2</sup>
- 2 39D 828/42
- 3 DIN EN ISO 4762 M12x20



ORDER EXAMPLE	VW CODE	L1=150
	39D 854/13	150

VW CODE	d1
39D 854/11	32
39D 854/13	40
39D 854/15	50
39D 854/17	63

## PAD RETAINER PIN - STECKBOLZEN - PERNO DI ARRESTO



## Notes

**Material:** 42CrMo4 - 800=1000 N/mm<sup>2</sup>

Only for replacement  
Nur für Reparatur  
Solo per riparazione



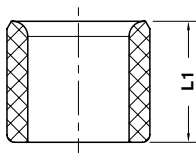
## VW CODE

39D 854/442

VW CODE	d1	L1
39D 854/441	32	130
39D 854/442	32	147
39D 854/443	40	171
39D 854/444	40	191
39D 854/445	50	207
39D 854/446	50	232
39D 854/447	63	252
39D 854/448	63	287



BUSH - DÄMPFUNGSBUCHSE - BOCCOLA



Notes

**Material:** Nylatron GSM P30

Only for replacement

Nur für Reparatur

Solo per riparazione

STOCK

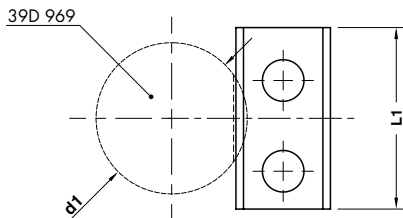


VW CODE
39D 855/5

VW CODE	L1
39D 855/4	32
39D 855/5	40
39D 855/6	50

Standard VW/Audi

RETAINER - SICHERUNGSPLATTE - PIASTRINA



Notes

**Material:** Si37

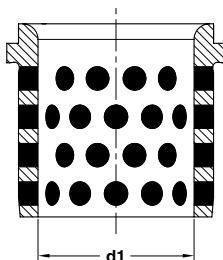
STOCK



VW CODE
39D 856/2

VW CODE	d1	L1
39D 856/2	25	40
	32	40
39D 856/4	40	48
	50	48
39D 856/6	63	60
	80	60

**BUSH SELF-LUBRICATING DIN 9834**  
**FUHRUNGSBUCHSE DIN 9834**  
**BOCCOLA AUTOLUBRIFICANTE DIN 9834**



### Notes

**Material:** Bronze + Graphite  
**HB > 190**

STOCK



VW CODE

39D 860/32

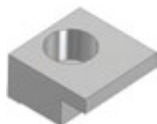
VW CODE

d1

39D 860/31	25
39D 860/32	32
39D 860/33	40
39D 860/34	50
39D 860/35	63
39D 860/36	80
39D 860/37	100
39D 860/38	125
39D 860/40	160

# 39D 861

**TOE CLAMP - HALTESTÜCK - RITEGNO PER BOCCOLA**

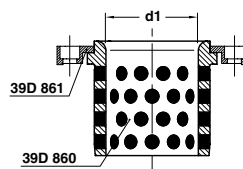


### Notes

**Material:** CK45

STOCK

### Application example



VW CODE

39D 861/6

VW CODE

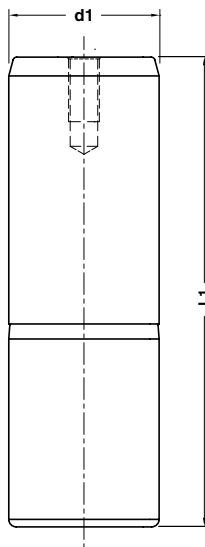
d1

39D 861/6	25÷50
39D 861/10	63÷160

## GUIDE POST DIN 9833 - FÜHRUNGSSÄULE DIN 9833 - COLONNA GUIDA DIN 9833



**Notes**  
**Material:** 16MnCr5  
**HRC:** 60÷62



Standard VW/Audi



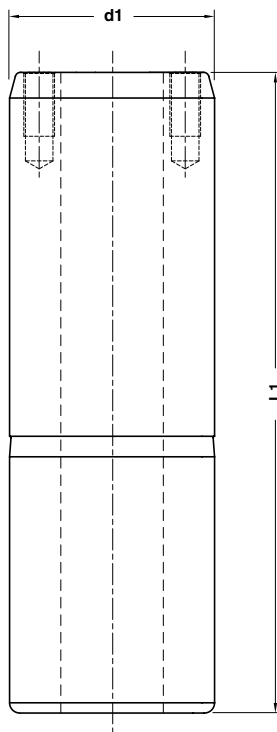
<b>VW CODE</b>
<b>39D 862/47</b>

VW CODE	d1	L1	VW CODE	d1	L1
39D 862/13	25	125	39D 862/45	50	250
39D 862/14	25	140	39D 862/46	50	280
39D 862/15	25	160	39D 862/47	50	315
39D 862/16	25	180	39D 862/48	50	355
39D 862/23	32	140	39D 862/51	63	180
39D 862/24	32	160	39D 862/52	63	200
39D 862/25	32	180	39D 862/53	63	224
39D 862/26	32	200	39D 862/54	63	250
39D 862/31	40	140	39D 862/55	63	280
39D 862/32	40	160	39D 862/56	63	315
39D 862/33	40	180	39D 862/57	63	355
39D 862/34	40	200	39D 862/58	63	400
39D 862/35	40	224	39D 862/62	80	224
39D 862/36	40	250	39D 862/63	80	250
39D 862/37	40	280	39D 862/64	80	280
39D 862/41	50	160	39D 862/65	80	315
39D 862/42	50	180	39D 862/66	80	355
39D 862/43	50	200	39D 862/67	80	400
39D 862/44	50	224			

GUIDE POST DIN 9833 - FÜHRUNGSSÄULE DIN 9833 - COLONNA GUIDA DIN 9833

Notes

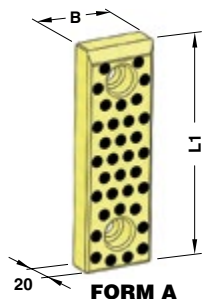
**Material:** 16MnCr5  
**HRC:** 60÷62



<b>VW CODE</b>
39D 862/75

VW CODE	d1	L1	VW CODE	d1	L1
39D 862/73	100	280	39D 862/85	125	450
39D 862/74	100	315	39D 862/86	125	500
39D 862/75	100	355	39D 862/93	160	400
39D 862/76	100	400	39D 862/94	160	450
39D 862/82	125	315	39D 862/95	160	500
39D 862/83	125	355	39D 862/96	160	560
39D 862/84	125	400			

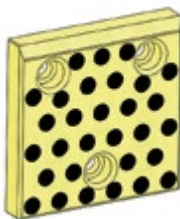
## WEAR PLATE SELF-LUBRICATING VDI 3357 GLEITPLATTE BRONZE MIT FESTSCHMIERSTOFF VDI 3357 PIASTRA GUIDA AUTOLUBRIFICANTE VDI 3357



**FORM A**



**FORM B**



**FORM C**



**FORM D**

### Notes

**Material:** Bronze + Graphite  
**HB > 190**



**VW CODE**  
**39D 863/12**

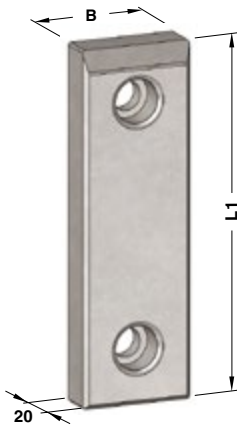
VW CODE	B	L1	FORM	VW CODE	B	L1	FORM	VW CODE	B	L1	FORM
39D 863/12	50	80	A	39D 863/44	125	125	C	39D 863/126	80	500	D
39D 863/13	50	100	A	39D 863/45	125	160	C	39D 863/131	100	450	D
39D 863/14	50	125	A	39D 863/46	125	200	C	39D 863/132	100	500	D
39D 863/15	50	160	A	39D 863/51	160	50	B	39D 863/141	125	450	D
39D 863/16	50	200	A	39D 863/52	160	80	B	39D 863/142	125	500	D
39D 863/21	80	50	B	39D 863/53	160	100	C	39D 863/150	100	250	D
39D 863/22	80	80	A	39D 863/54	160	125	C	39D 863/151	100	300	D
39D 863/23	80	100	A	39D 863/55	160	160	C	39D 863/152	100	350	D
39D 863/24	80	125	A	39D 863/56	160	200	C	39D 863/153	100	400	D
39D 863/25	80	160	A	39D 863/111	50	250	D	39D 863/155	125	250	D
39D 863/26	80	200	A	39D 863/112	50	300	D	39D 863/156	125	300	D
39D 863/31	100	50	B	39D 863/113	50	350	D	39D 863/157	125	350	D
39D 863/32	100	80	B	39D 863/114	50	400	D	39D 863/158	125	400	D
39D 863/33	100	100	A	39D 863/115	50	450	D	39D 863/160	160	250	D
39D 863/34	100	125	A	39D 863/116	50	500	D	39D 863/161	160	300	D
39D 863/35	100	160	A	39D 863/121	80	250	D	39D 863/162	160	350	D
39D 863/36	100	200	A	39D 863/122	80	300	D	39D 863/163	160	400	D
39D 863/41	125	50	B	39D 863/123	80	350	D	39D 863/164	160	450	D
39D 863/42	125	80	B	39D 863/124	80	400	D	39D 863/165	160	500	D
39D 863/43	125	100	C	39D 863/125	80	450	D				

**WEAR PLATE STEEL VDI 3357**  
**GLEITPLATTE STAHL VDI 3357**  
**PIASTRA GUIDA IN ACCIAIO VDI 3357**

**Notes**

**Material:** 16MnCr5  
**HRC:** 58÷60

STOCK



**FORM A**



**FORM B**



**FORM C**



**VW CODE**  
**39D 863/62**

VW CODE	B	L1	FORM	VW CODE	B	L1	FORM	VW CODE	B	L1	FORM
39D 863/62	50	80	A	39D 863/76	80	200	A	39D 863/94	125	125	C
39D 863/63	50	100	A	39D 863/81	100	50	B	39D 863/95	125	160	C
39D 863/64	50	125	A	39D 863/82	100	80	B	39D 863/96	125	200	C
39D 863/65	50	160	A	39D 863/83	100	100	A	39D 863/101	160	50	B
39D 863/66	50	200	A	39D 863/84	100	125	A	39D 863/102	160	80	B
39D 863/71	80	50	B	39D 863/85	100	160	A	39D 863/103	160	100	C
39D 863/72	80	80	A	39D 863/86	100	200	A	39D 863/104	160	125	C
39D 863/73	80	100	A	39D 863/91	125	50	B	39D 863/105	160	160	C
39D 863/74	80	125	A	39D 863/92	125	80	B	39D 863/106	160	200	C
39D 863/75	80	160	A	39D 863/93	125	100	C				

## LIFTING PIN - TRAGBOLZEN MIT FALLRINGSICHERUNG - PERNO DI SOLLEVAMENTO



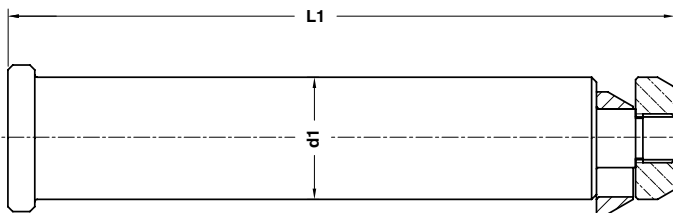
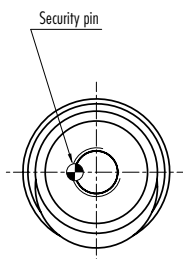
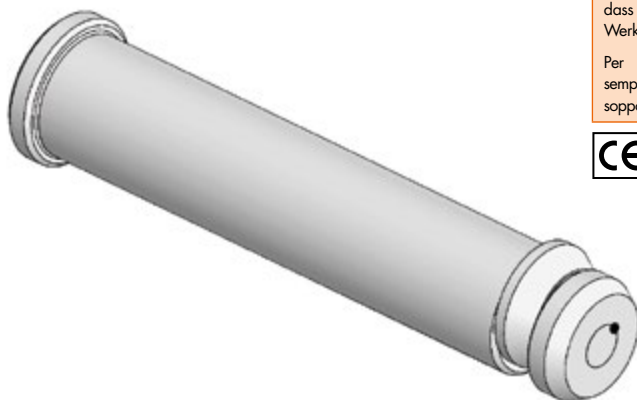
Respect the max load  
Maximale Nutzlast beachten  
Rispettare il carico Max

**WARNING - ACHTUNG - ATTENZIONE:**

For safety reason, please consider always that the weight of the die has to be supported by just 2 lifting pins.

Aus Sicherheitsgründen stets berücksichtigen, dass zwei Tragbolzen das gesamte Werkzeuggewicht tragen müssen.

Per ragioni di sicurezza, considerare sempre che il peso dello stampo deve essere sopportato da 2 soli perni.



ORDER EXAMPLE	VW CODE
	39D 866/4

VW CODE	Max load (kg)	Max die weight (kg)	L1	d1	Material
39D 866/3	3200	6400	175	32	CK45
39D 866/4	5000	10000	225	40	CK45
39D 866/5	8000	16000	273	50	CK45
39D 866/6	12500	25000	347	63	CK45
39D 866/7	31500	63000	422	76	42CrMo4
39D 866/25	8000	16000	221	50	CK45
39D 866/26	12500	25000	277	63	CK45

## LIFTING PIN - TRAGBOLZEN MIT FALLRINGSICHERUNG - PERNO DI SOLLEVAMENTO

Only for replacement, until exhaustion of stocks  
 Nur zur Reparatur, bis Bestand aufgebraucht ist  
 Solo per riparazione, fino ad esaurimento scorte



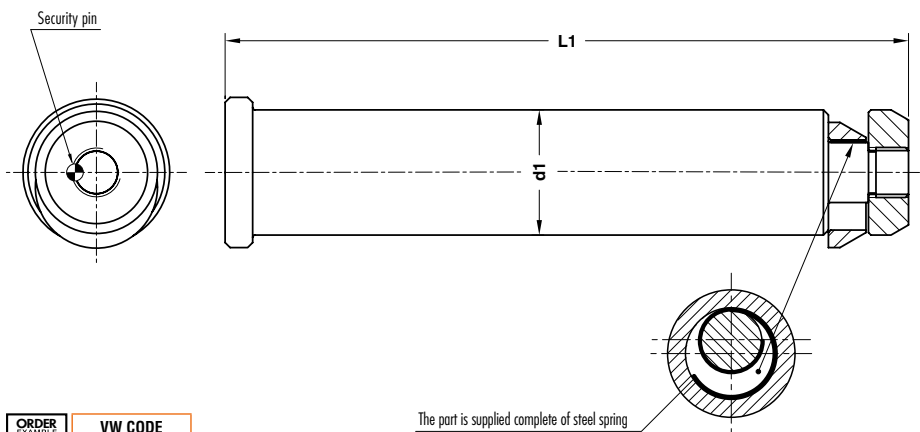
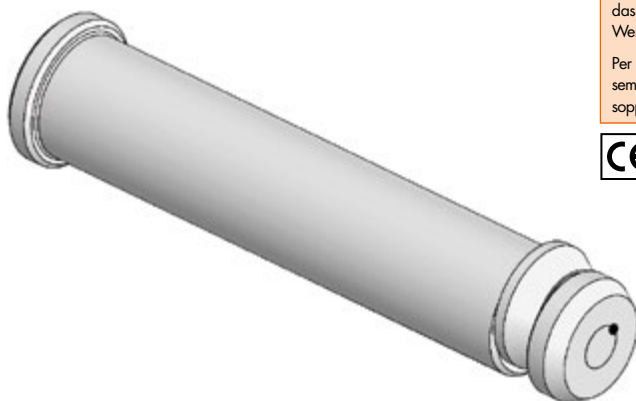
Respect the max load  
 Maximale Nutzlast beachten  
 Rispettare il carico Max

**WARNING - ACHTUNG - ATTENZIONE:**

For safety reason, please consider always that the weight of the die has to be supported by just 2 lifting pins.

Aus Sicherheitsgründen stets berücksichtigen, dass zwei Tragbolzen das gesamte Werkzeuggewicht tragen müssen.

Per ragioni di sicurezza, considerare sempre che il peso dello stampo deve essere sopportato da 2 soli perni.



The part is supplied complete of steel spring

ORDER EXAMPLE	VW CODE
	39D 866/14

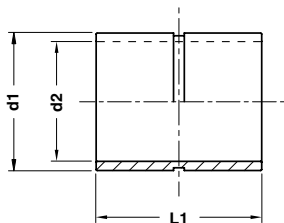
VW CODE	Max load (kg)	Max die weight (kg)	d1	L1	Material
39D 866/13	3200	6400	32	175	CK45
39D 866/14	5000	10000	40	225	CK45
39D 866/15	8000	16000	50	273	CK45
39D 866/16	12500	25000	63	347	CK45
39D 866/17	31500	63000	76	422	42CrMo4



BUSH FOR LIFTING PIN - BUCHSE FÜR TRAGBOLZEN - BOCCOLA PER PERNO DI SOLLEVAMENTO



FORM A



FORM B

Notes

Material: Si35

STOCK



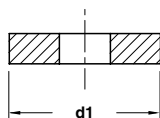
VW CODE

39D 867/11

VW CODE	d1	d2	FORM
39D 867/10	44	34	A
39D 867/11	52	42	A
39D 867/12	62	52	A
39D 867/13	75	65	A
39D 867/14	100	78	B
39D 867/15	105	78	B

Standard VW/Audi

WASHER - SCHEIBE - RONDELLA



Notes

**Material:** CK45

STOCK



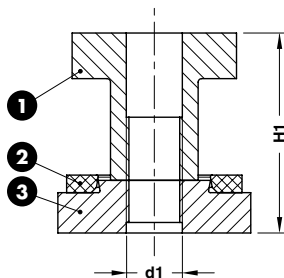
**VW CODE**  
39D 869/10

VW CODE	d1
39D 869/3	35
39D 869/4	40
39D 869/5	50
39D 869/6	65
39D 869/8	80
39D 869/10	100
39D 869/13	130

AIR CYLINDER FIXING - VERSCHRAUBUNG - FISSAGGIO CILINDRO



FORM A



Notes

- 1 **Material:** CK45
- 2 **Material:** Elastomer 90 SH
- 3 **Material:** CK45

STOCK



**VW CODE**  
39D 870/20

VW CODE	d1	H1	FORM
39D 870/16	M16x1,5	57	A
39D 870/20	M20x1,5	63	A
39D 870/27	M27x2,0	65	B



FORM B

CAM ROLLER - ROLLENBOCK - SUPPORTO CON RULLO



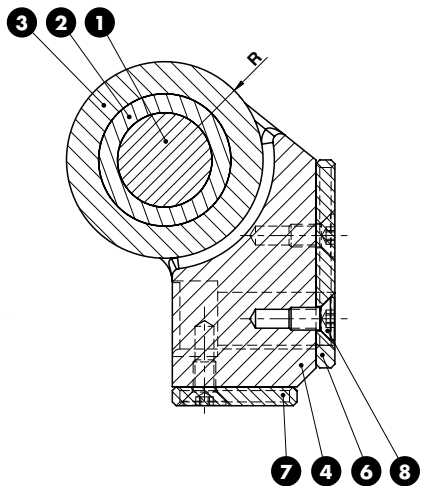
39D 872/20



39D 872/21

- Notes**
- 1 **Material:** 16MnCr5  
**HRC:** 60÷62
  - 2 **Material:** Bronze + Graphite  
**HB**>190
  - 3 **Material:** X210Cr12  
**HRC:** 60÷62
  - 4 **Material:** 42CrMo4
  - 5 E25 DIN 471
  - 6 **7 Material:** Si37
  - 8 DIN EN ISO M6x12 (x5)

STOCK ...



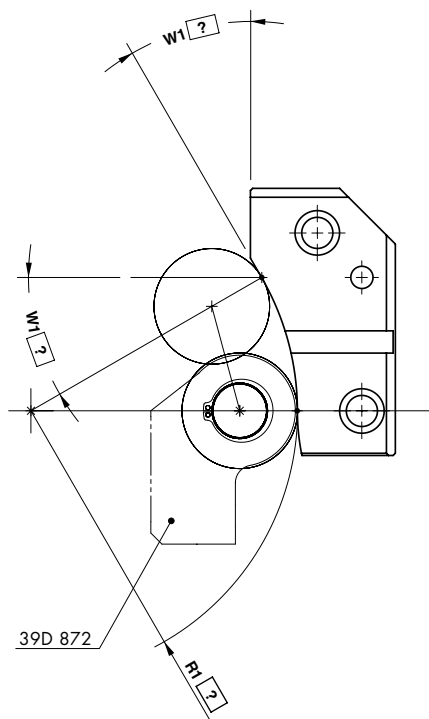
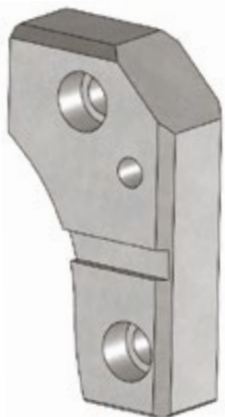
Standard VW/Audi

	VW CODE
	39D 872/21
VW CODE	
39D 872/20	
39D 872/21	

ACCELERATION CAM - SCHIEBERVORBESCHLEUNIGUNG - CAMMA DI ACCELERAZIONE

Notes

Materials: 90MnCrV8 - HRC: 60±62



	VW CODE	W1?	R1?
	39D 873/10	W1=30°	R1=120

VW CODE	SIDE
39D 873/10	RIGHT
39D 873/11	LEFT

## LIFTING BRACKET VDI 3366 - TRAGZAPFEN VDI 3366 - STAFFA DI SOLLEVAMENTO VDI 3366



FORM A



FORM B

## Notes

**Material:** CK45 - 700÷800 N/mm<sup>2</sup>

Screws not included



Respect the max load  
Maximale Nutzlast beachten  
Rispettare il carico Max

**WARNING - ACHTUNG - ATTENZIONE:**  
For safety reason, please consider always that the weight of the die has to be supported by just 2 lifting brackets.

Aus Sicherheitsgründen stets berücksichtigen, dass zwei Tragzapfens das gesamte Werkzeuggewicht tragen müssen.

Per ragioni di sicurezza, considerare sempre che il peso dello stampo deve essere sopportato da 2 sole staffe.



VW CODE

39D 876/11

VW CODE	Max load (kg)	Max die weight (kg)	FORM	VW CODE	Max load (kg)	Max die weight (kg)	FORM
39D 876/10	320	640	A	39D 876/15	5000	10000	A
39D 876/11	630	1260	A	39D 876/16	8000	16000	B
39D 876/12	1250	2500	A	39D 876/17	12500	25000	B
39D 876/13	2000	4000	A	39D 876/18	20000	40000	B
39D 876/14	3200	6400	A				

## AIR CYLINDER FIXING - ZIEHTEILHEBER - FISSAGGIO CILINDRO



39D882/2



39D882/3

STOCK

## Notes

## Material:

39D882/2 - 34Cr4

39D882/3 - CK45



VW CODE

39D 882/2

VW CODE

39D 882/2

39D 882/3

## AIR CYLINDER ADAPTER - TEILHEBER - ADATTATORE PER CILINDRO



## Notes

Material: CK45

STOCK



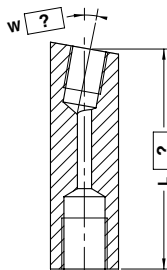
VW CODE

39D 887/1

VW CODE

39D 887/1

## AIR CYLINDER ADAPTER - TEILHEBER - ADATTATORE PER CILINDRO



L max = 100

## Notes

Material: CK45



VW CODE

39D 887/2

L=75

75

W=5°

5°

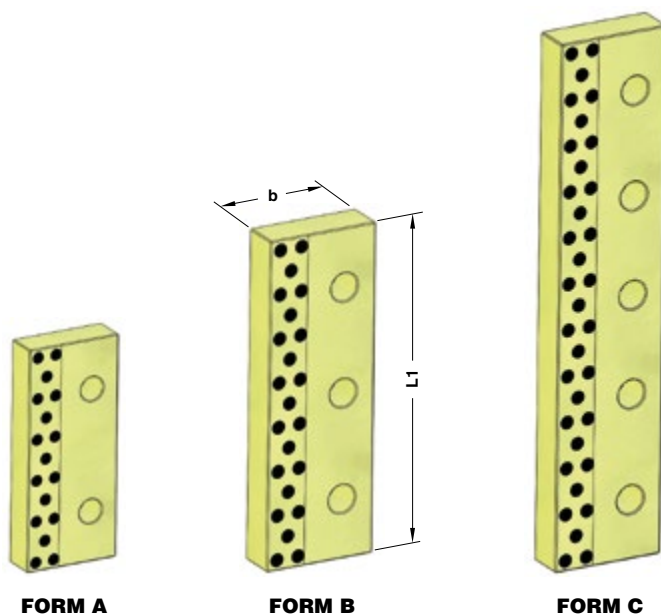
VW CODE

39D 887/2

**WEAR PLATE SELF-LUBRICATING  
DECKLEISTE BRONZE MIT FESTSCHMIERSTOFF  
PIASTRA GUIDA AUTOLUBRIFICANTE**

**Notes**

**Material:** Bronze + Graphite  
**HB** > 190



Standard VW/Audi

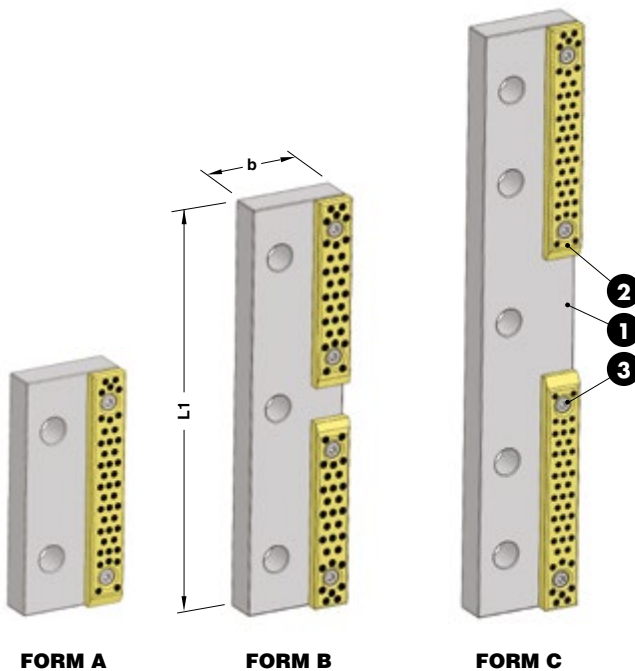
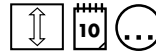
	VW CODE
	39D 890/26

VW CODE	b	L1	FORM	VW CODE	b	L1	FORM
39D 890/25	85	160	A	39D 890/16	125	200	A
39D 890/26	85	200	A	39D 890/17	125	250	B
39D 890/27	85	250	B	39D 890/18	125	300	B
39D 890/28	85	300	B	39D 890/19	125	350	B
39D 890/29	85	350	B	39D 890/20	125	400	C
39D 890/30	85	400	C	39D 890/21	125	450	C
39D 890/15	125	160	A	39D 890/22	125	500	C

## WEAR PLATE DECKLEISTE SCHIEBERFÜHRUNG PIASTRA GUIDA

### Notes

- 1 Material: CK45
- 2 39D 954/11÷39
- 3 DIN 912 M8x16



	VW CODE
	39D 890/51

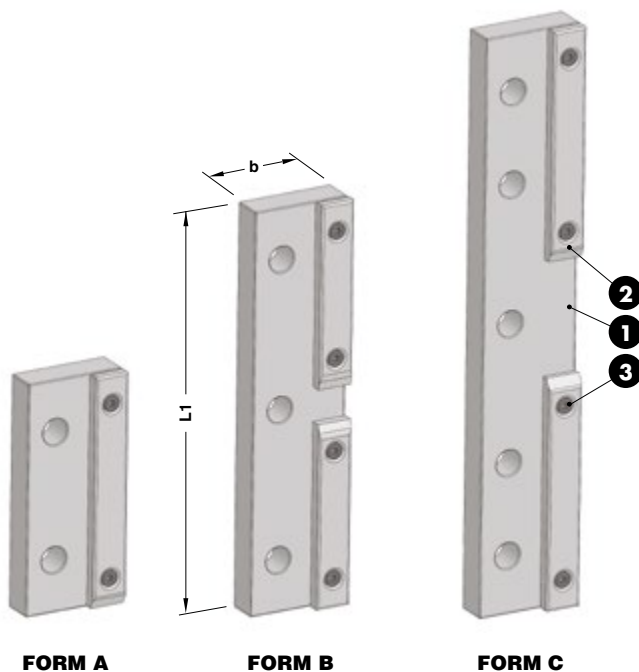
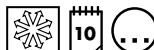
VW CODE	b	L1	FORM	VW CODE	b	L1	FORM
39D 890/50	85	160	A	39D 890/60	125	160	A
39D 890/51	85	200	A	39D 890/61	125	200	A
39D 890/52	85	250	B	39D 890/62	125	250	B
39D 890/53	85	300	B	39D 890/63	125	300	B
39D 890/54	85	350	B	39D 890/64	125	350	B
39D 890/55	85	400	C	39D 890/65	125	400	C
39D 890/56	85	450	C	39D 890/66	125	450	C
39D 890/57	85	500	C	39D 890/67	125	500	C



## SINTERED STEEL WEAR PLATE GLEITPLATTE STAHL MIT SINTERGLEITFLÄCHE PIASTRA GUIDA IN ACCIAIO SINTERIZZATO

### Notes

- 1 **Material:** CK45
- 2 39D 954/71÷99
- 3 DIN 912 M8x16



**FORM A**

**FORM B**

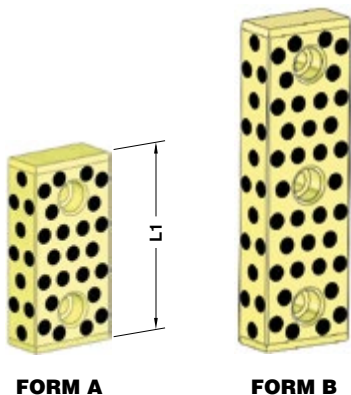
**FORM C**



**VW CODE**  
39D 890/71

VW CODE	b	L1	FORM	VW CODE	b	L1	FORM
39D 890/70	85	160	A	39D 890/80	125	160	A
39D 890/71	85	200	A	39D 890/81	125	200	A
39D 890/72	85	250	B	39D 890/82	125	250	B
39D 890/73	85	300	B	39D 890/83	125	300	B
39D 890/74	85	350	B	39D 890/84	125	350	B
39D 890/75	85	400	C	39D 890/85	125	400	C
39D 890/76	85	450	C	39D 890/86	125	450	C
39D 890/77	85	500	C	39D 890/87	125	500	C

**GUIDE BAR SELF-LUBRICATING VDI 3357**  
**FÜHRUNGSLEISTE BRONZE MIT FESTSCHMIERSTOFF VDI 3357**  
**LARDONE AUTOLUBRIFICANTE VDI 3357**



**FORM A**

**FORM B**

**Notes**

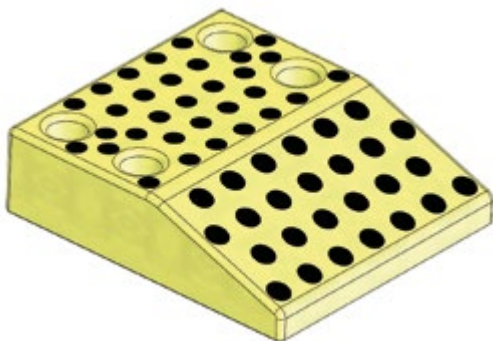
**Material:** Bronze + Graphite  
**HB > 190**



<b>VW CODE</b>
39D 892/12

VW CODE	L1	FORM
39D 892/10	125	A
39D 892/11	160	A
39D 892/12	200	B
39D 892/15	125	A
39D 892/16	160	A
39D 892/17	200	B

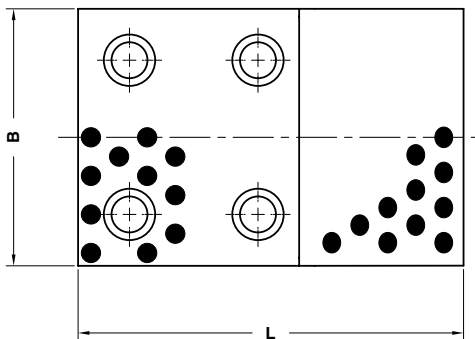
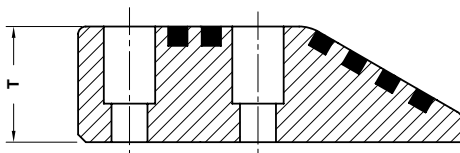
**CAM DWELL WEAR PLATE SELF-LUBRICATING VDI 3357**  
**ÜBERLAUFKEILE BRONZE MIT FESTSCHMIERSTOFF VDI 3357**  
**CUNEO AUTOLUBRIFICANTE VDI 3357**



**Notes**  
**Material:** Bronze + Graphite  
**HB > 190**



Standard VW/Audi



ORDER EXAMPLE 	VW CODE
	39D 894/131

VW CODE	B	L	T	VW CODE	B	L	T
39D 894/130	100	170	45	39D 894/136	125	150	45
39D 894/131	125	170	45	39D 894/137	125	170	60
39D 894/132	150	170	45	39D 894/138	150	150	45
39D 894/134	100	150	45	39D 894/139	150	170	60
39D 894/135	100	170	60				

**CAM DWELL WEAR PLATE STEEL VDI 3357**  
**ÜBERLAUFKEILE STAHL VDI 3357**  
**CUNEO IN ACCIAIO VDI 3357**

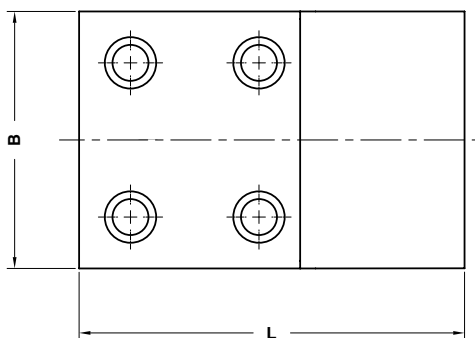
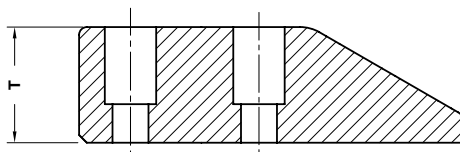


**Notes**

**Material:** X155CrVMo121KU

**HRC:** 58÷62

STOCK

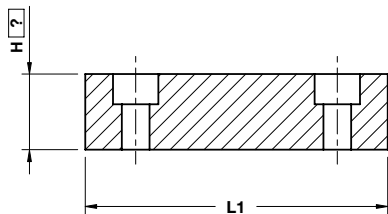


**VW CODE**

**39D 894/151**

VW CODE	B	L	T	VW CODE	B	L	T
39D 894/150	100	170	45	39D 894/156	125	150	45
39D 894/151	125	170	45	39D 894/157	125	170	60
39D 894/152	150	170	45	39D 894/158	150	150	45
39D 894/154	100	150	45	39D 894/159	150	170	60
39D 894/155	100	170	60				

KEY - PASSFEDER - CHIAVETTA



**Notes**  
**Material:** S235JRG2K

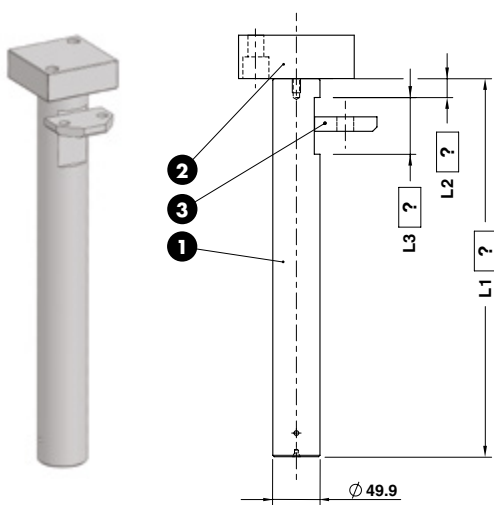


VW CODE	H=35
39D 895/2	35

VW CODE	L1
39D 895/1	80
39D 895/2	120
39D 895/3	200

Standard VW/Audi

**COMPENSATION PIN GROUP**  
**AUSGLEICHSDRUCKBOLZEN**  
**GRUPPO PERNO DI COMPENSAZIONE**



**Notes**

① ② ③

**Material:** 16MnCr5 - **HRC:** 60÷64

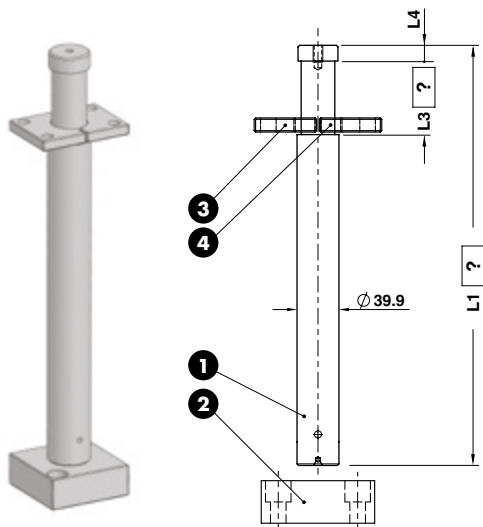


ORDER EXAMPLE	VW CODE	L1=400	L2=20	L3=60
	39D 896/1	400	20	60

**VW CODE**

39D 896/1

**COMPENSATION PIN GROUP**  
**AUSGLEICHSDRUCKBOLZEN**  
**GRUPPO PERNO DI COMPENSAZIONE**



**Notes**

① ② ③ ④

**Material:** 16MnCr5 - **HRC:** 60÷64

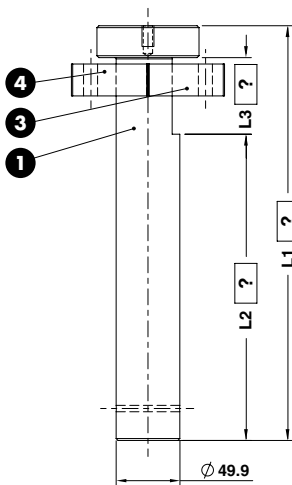


ORDER EXAMPLE	VW CODE	L1=300	L3=60	L4=45
	39D 896/2	300	60	45

**VW CODE**

39D 896/2

**COMPENSATION PIN GROUP**  
**AUSGLEICHSDRUCKBOLZEN**  
**GRUPPO PERNO DI COMPENSAZIONE**



**Notes**

**1 3 4**

**Material:** 16MnCr5 - HRC: 60÷64



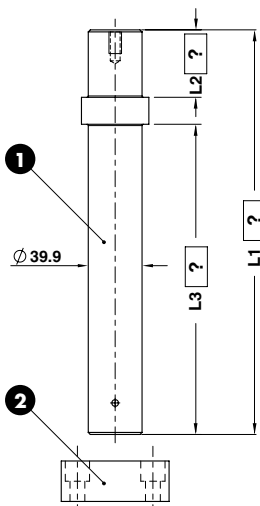
ORDER EXAMPLE	VW CODE	L1=325	L2=240	L3=60
	39D 896/3	325	240	60

**VW CODE**

39D 896/3

Standard VW/Audi

**COMPENSATION PIN GROUP**  
**AUSGLEICHSDRUCKBOLZEN**  
**GRUPPO PERNO DI COMPENSAZIONE**



**Notes**

**1 2**

**Material:** 16MnCr5 - HRC: 60÷64



ORDER EXAMPLE	VW CODE	L1=300	L2=50	L3=230
	39D 896/4	300	50	230

**VW CODE**

39D 896/4

## BACKING PLATE - DISTANZKAPPE - REAZIONE PER CILINDRO



## Notes

**Material:** 16MnCr5 - HRC: 60÷64

STOCK



VW CODE

39D 896/1-02

VW CODE

39D 896/1-02

## RETAINER - SICHERUNGSPLATTE - PIASTRINA



## Notes

**Material:** 16MnCr5 - HRC: 60÷64

STOCK



VW CODE

39D 896/1-03

VW CODE

39D 896/1-03

## RETAINER - SICHERUNGSPLATTE - PIASTRINA



## Notes

3 4

**Material:** 16MnCr5 - HRC: 60÷64

STOCK



VW CODE

39D 896/2-04

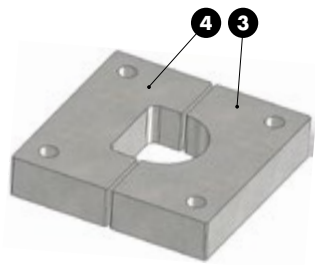
VW CODE

39D 896/2-03

39D 896/2-04



RETAINER - SICHERUNGSPLATTE - PIASTRINA



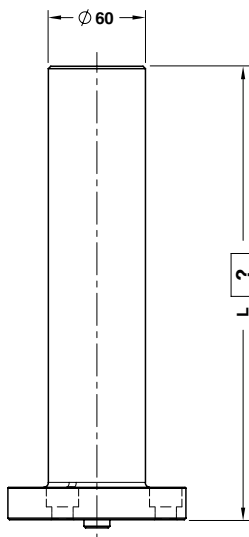
Notes	
<p><b>3 4</b>  <b>Material:</b> 16MnCr5 - <b>HRC:</b> 60÷64</p>	
<p><b>STOCK</b></p>	
<p><b>ORDER SAMPLE</b></p>	<p><b>VW CODE</b></p> <p>39D 896/3-04</p>
	<p><b>VW CODE</b></p> <p>39D 896/3-03</p> <p>39D 896/3-04</p>

Standard VW/Audi

AIR PIN - UNTERLUFTBOLZEN - CANDELA



39D 951/1



L max = 440

Notes

**Material:** CK45 - 800÷1000 N/mm<sup>2</sup>

Only for replacement

Nur für Reparatur

Solo per riparazione



39D 951/2

	VW CODE	L=200
	39D 951/1	200

VW CODE

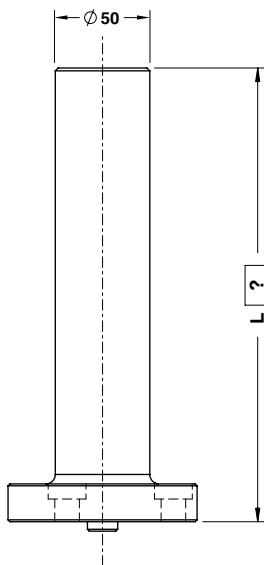
39D 951/1


39D 951/2

AIR PIN - UNTERLUFTBOLZEN - CANDELA



39D 951/11



 L max = 440

**Notes**  
**Material:** CK45 - 800÷1000 N/mm<sup>2</sup>



Standard VW/Audi

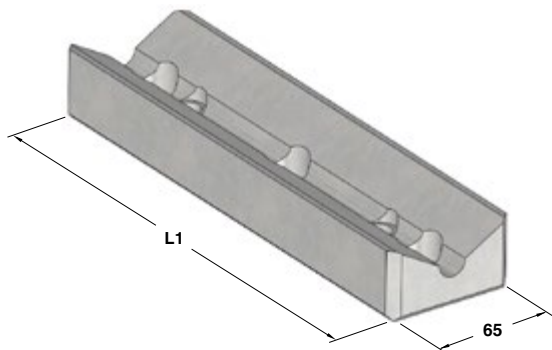


39D 951/12

	VW CODE	L=200
	39D 951/12	200

VW CODE
39D 951/11
39D 951/12

**"V" DRIVER STEEL VDI 3357**  
**PRISMENFÜHRUNG STAHL VDI 3357**  
**GUIDA A "V" IN ACCIAIO VDI 3357**



## Notes

**Material:** CK45 - HRC: 58÷60

STOCK



## VW CODE

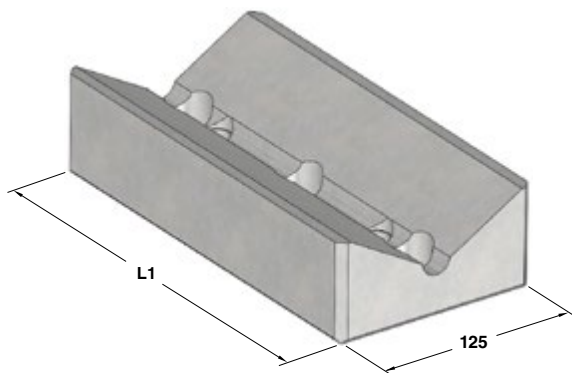
39D 952/12

## VW CODE

## L1

39D 952/10	150
39D 952/11	200
39D 952/12	250
39D 952/13	300

**"V" DRIVER STEEL VDI 3357**  
**PRISMENFÜHRUNG STAHL VDI 3357**  
**GUIDA A "V" IN ACCIAIO VDI 3357**



## Notes

**Material:** CK45 - HRC: 58÷60

STOCK



## VW CODE

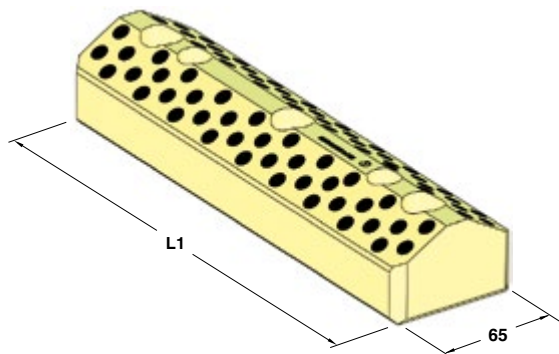
39D 952/23

## VW CODE

## L1

39D 952/20	150
39D 952/21	200
39D 952/22	250
39D 952/23	300

**"V" DRIVER SELF-LUBRICATING VDI 3357**  
**PRISMENFÜHRUNG BRONZE MIT FESTSCHMIERSTOFF VDI 3357**  
**GUIDA A "V" AUTOLUBRIFICANTE VDI 3357**



## Notes

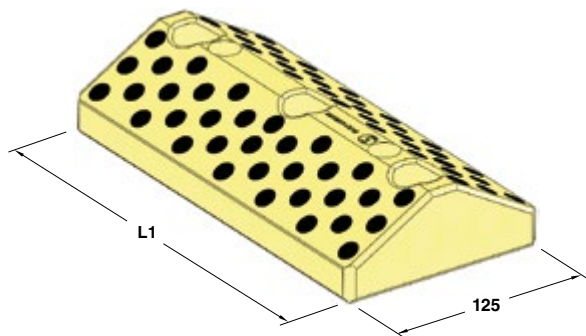
**Material:** Bronze + Graphite  
**HB** >190

STOCK



VW CODE	L1
39D 952/40	150
39D 952/41	200
39D 952/42	250
39D 952/43	300

**"V" DRIVER SELF-LUBRICATING VDI 3357**  
**PRISMENFÜHRUNG BRONZE MIT FESTSCHMIERSTOFF VDI 3357**  
**GUIDA A "V" AUTOLUBRIFICANTE VDI 3357**



## Notes

**Material:** Bronze + Graphite  
**HB** >190

STOCK

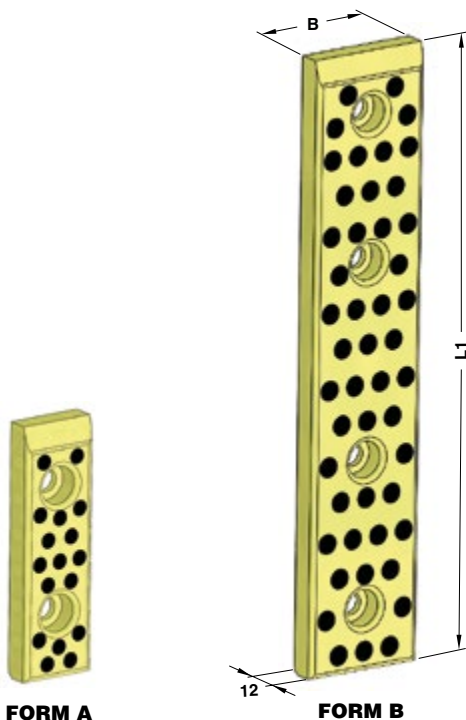


VW CODE	L1
39D 952/50	150
39D 952/51	200
39D 952/52	250
39D 952/53	300

**WEAR PLATE SELF-LUBRICATING VDI 3357**  
**GLEITPLATTE BRONZE MIT FESTSCHMIERSTOFF VDI 3357**  
**PIASTRA GUIDA AUTOLUBRIFICANTE VDI 3357**

**Notes**

**Material:** Bronze + Graphite  
**HB > 190**



**VW CODE**  
**39D 954/12**

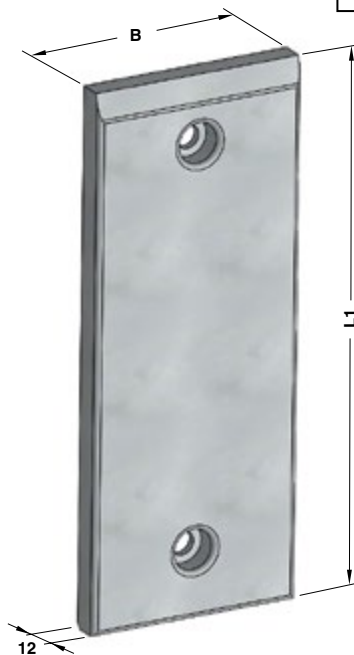
VW CODE	B	L1	FORM	VW CODE	B	L1	FORM	VW CODE	B	L1	FORM
39D 954/11	30	80	A	39D 954/21	50	80	A	39D 954/31	80	80	A
39D 954/12	30	100	A	39D 954/22	50	100	A	39D 954/32	80	100	A
39D 954/13	30	125	A	39D 954/23	50	125	A	39D 954/33	80	125	A
39D 954/14	30	160	A	39D 954/24	50	160	A	39D 954/34	80	160	A
39D 954/15	30	200	A	39D 954/25	50	200	A	39D 954/35	80	200	A
39D 954/16	40	80	A	39D 954/26	60	80	A	39D 954/36	50	250	B
39D 954/17	40	100	A	39D 954/27	60	100	A	39D 954/37	50	300	B
39D 954/18	40	125	A	39D 954/28	60	125	A	39D 954/38	50	350	B
39D 954/19	40	160	A	39D 954/29	60	160	A	39D 954/39	50	400	B
39D 954/20	40	200	A	39D 954/30	60	200	A				

**WEAR PLATE STEEL VDI 3357**  
**GLEITPLATTE STAHL VDI 3357**  
**PIASTRA GUIDA IN ACCIAIO VDI 3357**

**Notes**

**Material:** 16MnCr5 - **HRC:** 58÷60

STOCK



Standard VW/Audi



**VW CODE**

**39D 954/42**

VW CODE	B	L1	VW CODE	B	L1
39D 954/41	30	80	39D 954/54	50	160
39D 954/42	30	100	39D 954/55	50	200
39D 954/43	30	125	39D 954/56	60	80
39D 954/44	30	160	39D 954/57	60	100
39D 954/45	30	200	39D 954/58	60	125
39D 954/46	40	80	39D 954/59	60	160
39D 954/47	40	100	39D 954/60	60	200
39D 954/48	40	125	39D 954/61	80	80
39D 954/49	40	160	39D 954/62	80	100
39D 954/50	40	200	39D 954/63	80	125
39D 954/51	50	80	39D 954/64	80	160
39D 954/52	50	100	39D 954/65	80	200
39D 954/53	50	125			

**SINTERED STEEL WEAR PLATE TYPE VDI 3357**  
**GLEITPLATTE STAHL MIT SINTERGLEITFLÄCHE TIP VDI 3357**  
**PIASTRA GUIDA IN ACCIAIO SINTERIZZATO TIPO VDI 3357**

**Notes**

**Material:** Syntered metal



**FORM A**

**FORM B**

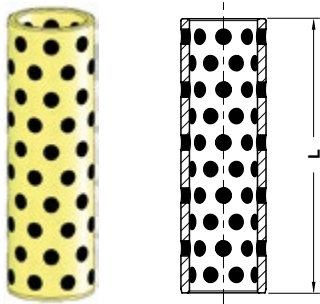


**VW CODE**  
**39D 954/72**

VW CODE	B	L1	FORM	VW CODE	B	L1	FORM	VW CODE	B	L1	FORM
39D 954/71	30	80	A	39D 954/81	50	80	A	39D 954/91	80	80	A
39D 954/72	30	100	A	39D 954/82	50	100	A	39D 954/92	80	100	A
39D 954/73	30	125	A	39D 954/83	50	125	A	39D 954/93	80	125	A
39D 954/74	30	160	A	39D 954/84	50	160	A	39D 954/94	80	160	A
39D 954/75	30	200	A	39D 954/85	50	200	A	39D 954/95	80	200	A
39D 954/76	40	80	A	39D 954/86	60	80	A	39D 954/96	50	250	B
39D 954/77	40	100	A	39D 954/87	60	100	A	39D 954/97	50	300	B
39D 954/78	40	125	A	39D 954/88	60	125	A	39D 954/98	50	350	B
39D 954/79	40	160	A	39D 954/89	60	160	A	39D 954/99	50	400	B
39D 954/80	40	200	A	39D 954/90	60	200	A				



## GUIDE BUSH - FÜHRUNGSBUCHSE - BOCCOLA AUTOLUBRIFICANTE



## Notes

**Material:** Bronze + Graphite  
**HB** > 190

STOCK



VW CODE

39D 956/1

VW CODE

L

39D 956/1

115

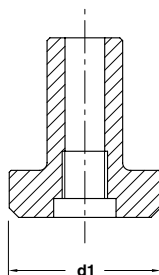
39D 956/2

145

39D 956/3

170

## STOP PIN - HALTEBOLZEN - PERNO DI ARRESTO



## Notes

**Material:** 42CrMo4

Only for replacement

Nur für Reparatur

Solo per riparazione

STOCK



VW CODE

39D 958/2

VW CODE

d1

39D 958/1

100

39D 958/2

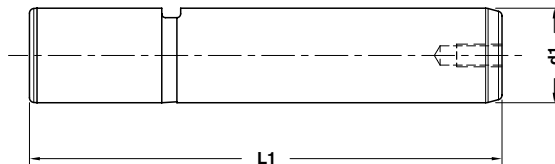
80

**GUIDE POST DIN 9833 TYPE**  
**FÜHRUNGSSÄULE DIN 9833 TYP**  
**COLONNA GUIDA TIPO DIN 9833**

## Notes

Material: 1.6MnCr5

HRC: 60÷62

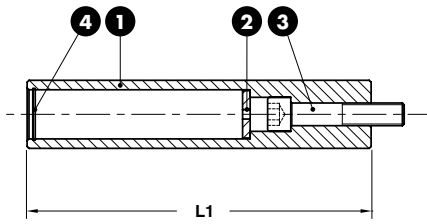


## VW CODE

39D 969/47

VW CODE	d1	L1	VW CODE	d1	L1
39D 969/13	25	125	39D 969/45	50	250
39D 969/14	25	140	39D 969/46	50	280
39D 969/15	25	160	39D 969/47	50	315
39D 969/16	25	180	39D 969/48	50	355
39D 969/23	32	140	39D 969/53	63	224
39D 969/24	32	160	39D 969/54	63	250
39D 969/25	32	180	39D 969/55	63	280
39D 969/26	32	200	39D 969/56	63	315
39D 969/32	40	160	39D 969/57	63	355
39D 969/33	40	180	39D 969/58	63	400
39D 969/34	40	200	39D 969/64	80	250
39D 969/35	40	224	39D 969/65	80	280
39D 969/36	40	250	39D 969/66	80	315
39D 969/37	40	280	39D 969/67	80	355
39D 969/43	50	200	39D 969/68	80	400
39D 969/44	50	224			

LIFTER - FEDERBOLZEN - SOLLEVATORE



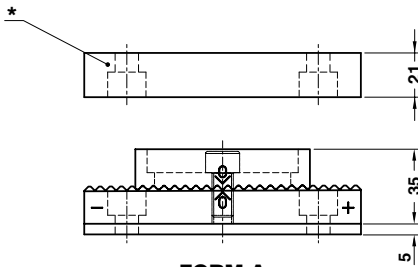
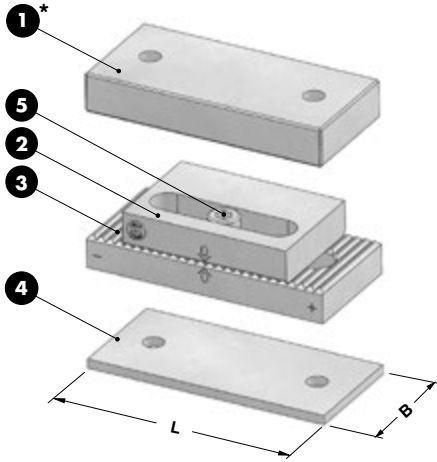
- Notes**
- 1 **Material:** CK45 - **HRC:** 60÷62
  - 2 **Material:** 90MnCrV8  
**HRC:** 54÷60
  - 3 M10x60 DIN 912
  - 4 Seeger ring DIN 472

STOCK

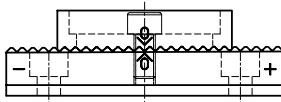
	<b>VW CODE</b>
	39D 972/11
<b>VW CODE</b>	
<b>39D 972/11</b>	<b>L1</b>
39D 972/12	182
39D 972/13	200
	220

Standard VW/Audi

SPACER PLATE TOOTHED - DISTANZPLATTE GEZAHNT - TASSELLO DI COMPENSAZIONE



FORM A



FORM B

Notes

1 2 3

Material: 90MnCrV8 - HRC: 58±60

4 Material: X155CrVMo12

5 DIN 912



\* Pressure plate only in FORM A  
 Druckplatte nur bei Form A enthalten  
 Piastra di reazione solo in FORM A

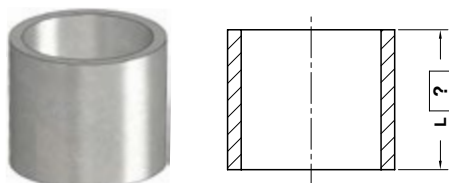
ORDER EXAMPLE	VW CODE		
	39D 976/11		
VW CODE	L	B	FORM
39D 976/10	130	60	A
39D 976/11	160	80	A
39D 976/20	130	60	B
39D 976/21	160	80	B

PLATE FOR SENSOR - HALTERUNG - PIASTRINA PORTASENSORE



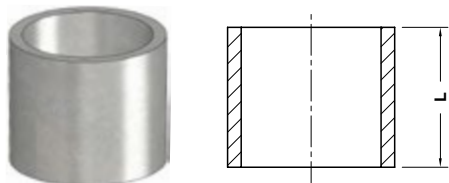
Notes	
<b>Material:</b> Si37	
<b>STOCK</b>	
<b>ORDER EXAMPLE</b>	<b>VW CODE</b>
	39D 993/1
<b>VW CODE</b>	<b>d1</b>
39D 993/1	19
39D 993/2	31

SPACER - DISTANZSTÜCK - DISTANZIALE



Notes		
<b>Material:</b> CK45		
<b>STOCK</b>		
<b>ORDER EXAMPLE</b>	<b>VW CODE</b>	<b>L=37</b>
	39D 995/4	37
<b>VW CODE</b>		
39D 995/4		

SPACER - DISTANZSTÜCK - DISTANZIALE



Notes	
<b>Material:</b> CK45	
<b>STOCK</b>	
<b>ORDER EXAMPLE</b>	<b>VW CODE</b>
	39D 995/4 L24

VW CODE	L	VW CODE	L	VW CODE	L	VW CODE	L	VW CODE	L
39D 995/4 L17	17	39D 995/4 L28	28	39D 995/4 L37	37	39D 995/4 L47	47	39D 995/4 L57	57
39D 995/4 L24	24	39D 995/4 L29	29	39D 995/4 L38	38	39D 995/4 L48	48	39D 995/4 L57,5	57,5
39D 995/4 L25	25	39D 995/4 L32	32	39D 995/4 L41	41	39D 995/4 L49	49	39D 995/4 L77	77
39D 995/4 L27	27	39D 995/4 L33	33	39D 995/4 L42	42	39D 995/4 L51	51		

## WASHER/STOP BLOCK - SCHEIBE/HALTEPLATTE - RONDELLA/TASSELLO

## Notes

## Material:

39D 995/5 - CK45

39D 995/6 - 16MnCr5 - HRC: 60±62

STOCK



39D 995/5



39D 995/6



## VW CODE

39D 995/6

## VW CODE

39D 995/5

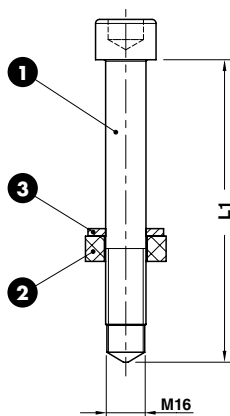
39D 995/6

## RETAINER PIN - ZIEHTEILHEBER - PERNO CON RONDELLA

## Notes

- 1 DIN 912
- 2 Material: Nylatron GSM P30
- 3 Material: STEEL

STOCK



## VW CODE

39D 995/14

## VW CODE

## L1

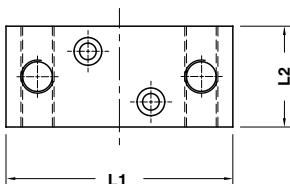
39D 995/12 120

39D 995/14 135

39D 995/15 150

39D 995/16 160

DISTRIBUTOR - VERTEILERBLOCCKE - DISTRIBUTORE



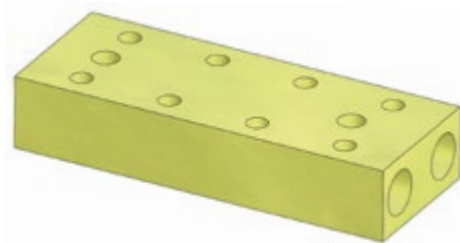
STOCK

**Notes**  
**Material:** Ms65

ORDER EXAMPLE	VW CODE
	39D 1392/1

VW CODE	L1	L2
39D 1392/1	90	40
39D 1392/2	100	45
39D 1392/3	110	50
39D 1392/4	120	60

DISTRIBUTOR - VERTEILERBLOCCKE - DISTRIBUTORE



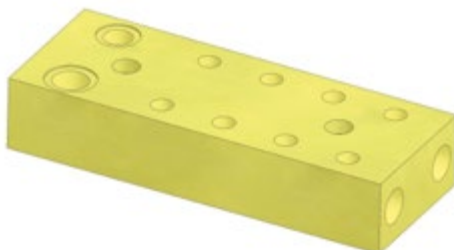
**Notes**  
**Material:** Ms65

STOCK

ORDER EXAMPLE	VW CODE
	39D 1430/1

VW CODE
39D 1430/1

DISTRIBUTOR - VERTEILERBLOCCKE - DISTRIBUTORE



**Notes**  
**Material:** Ms65

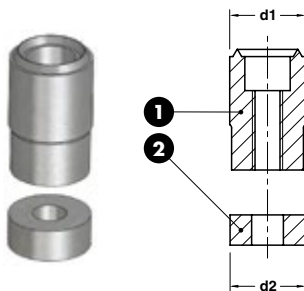
STOCK

ORDER EXAMPLE	VW CODE
	39D 1497/2

VW CODE	CYLINDER DIAMETER
39D 1497/1	≤63
39D 1497/2	>63

Standard VW/Audi

**VISUAL LOCATOR SETTING PUNCH  
STEMPEL F. ENTGASUNGSNOPPEN  
PUNZONE DI VISUALIZZAZIONE**



## Notes

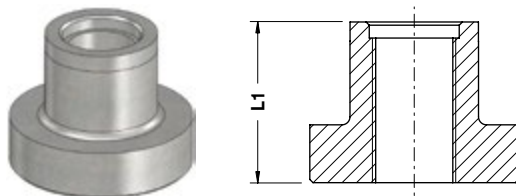
- ① **Material:** X205Cr12KU  
**HRC:** 60÷62
- ② **Material:** X205Cr12KU



<b>VW CODE</b>
39V 863/10

VW CODE	d1	d2
39V 863/10	10	9,7
39V 863/13	13	12

**THREADED BUSH - GENWINDEBUCHSE - BOCCOLA FILETTATA**



## Notes

**Material:** CK45



<b>VW CODE</b>
39V 1071

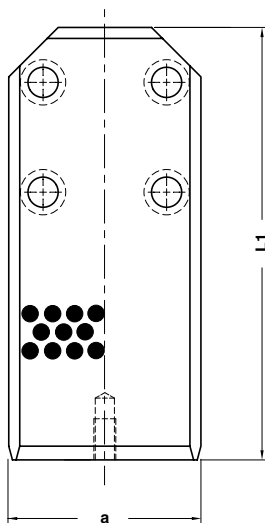
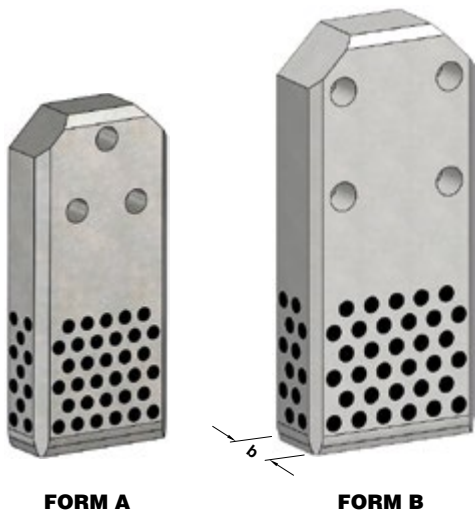
VW CODE	L1
39V 1071/1	50
39V 1071/2	87



GIB VDI 3387 - FÜHRUNGSLASCHE VDI 3387 - GUIDA VDI 3387

Notes

**Material:** CK45 + Graphite  
**HRC:** 58÷60

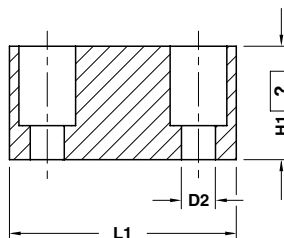
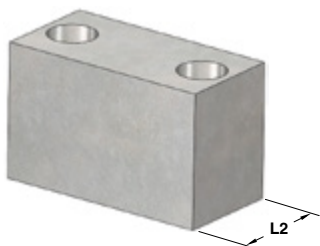


Standard VW/Audi

ORDER EXAMPLE	VW CODE
	39V 1159/25

VW CODE	a	b	L1	FORM
39V 1159/24	112	45	250	A
39V 1159/25	140	45	315	B
39V 1159/32	190	56	400	B
39V 1159/35	240	56	500	B
39V 1159/36	240	56	630	B
39V 1159/37	140	45	400	B
39V 1159/38	140	56	400	B

STOP BLOCK - ABSTANDSBLOCK - DISTANZIALE



Notes

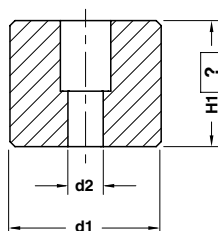
**Material:** CK45  
 Only for replacement  
 Nur für Reparatur  
 Solo per riparazione



ORDER EXAMPLE	VW CODE	H1=60
	39V 1162/3	60

VW CODE	D2	L1	L2
39V 1162/1	9	60	40
39V 1162/2	11	80	40
39V 1162/3	14	100	40
39V 1162/4	14	100	50
39V 1162/5	14	120	60
39V 1162/6	14	150	80
39V 1162/7	14	160	100
39V 1162/20	18	150	80
39V 1162/21	18	160	100

STOP BLOCK - ABSTANDSBLOCK - DISTANZIALE



Notes

**Material:** CK45  
 Only for replacement  
 Nur für Reparatur  
 Solo per riparazione



ORDER EXAMPLE	VW CODE	H1=60
	39V 1162/15	60

VW CODE	d1	d2
39V 1162/14	60	14
39V 1162/26	80	18
39V 1162/15	80	14
39V 1162/17	120	22
39V 1162/18	150	22
39V 1162/25	100	18

LOCATING CONE - KEGELDISTANZ - CONO DI CENTRAGGIO



FORM A



FORM B

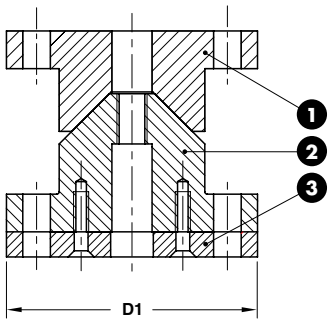


FORM C

**Notes**

1 2 **Material:** 16MnCr5  
**HRC:** 58÷60

3 **Material:** CK45



Standard VW/Audi

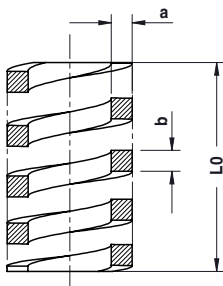
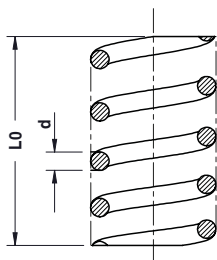
ORDER EXAMPLE	VW CODE	
	39V 1168/16	
VW CODE	FORM	D1
39V 1168/10	A	100
39V 1168/12	A	120
39V 1168/14	B	100
39V 1168/16	B	120
39V 1168/18	C	100
39V 1168/20	C	120

COIL SPRING - SCHRAUBENFEDERN - MOLLA A FILO

Notes

Material: 50CrV4

STOCK



VW CODE

39V 1176/2

VW CODE	d	axb	L0	VW CODE	d	axb	L0
39V 1176/1	1,00	-	16,5	39V 1176/16	1,75	-	40,0
39V 1176/2	1,00	-	34,5	39V 1176/17	2,00	-	50,0
39V 1176/3	1,25	-	57,5	39V 1176/18	2,00	-	43,5
39V 1176/4	1,50	-	24,5	39V 1176/19	2,00	-	77,5
39V 1176/6	1,50	-	81,0	39V 1176/20	2,00	-	200,0
39V 1176/7	2,00	-	20,0	39V 1176/21	3,00	-	39,5
39V 1176/8	2,10	-	110,0	39V 1176/22	3,00	-	150,0
39V 1176/9	1,50	-	52,5	39V 1176/23	4,00	-	65,0
39V 1176/10	2,20	-	30,5	39V 1176/26	-	5,0x2,5	100,0
39V 1176/11	-	2,5x2,5	30,5	39V 1176/27	4,00	-	125,0
39V 1176/12	-	2,5x2,5	40,5				

STRIPPER FOR BLANKING DIES - ABSTREIFER FÜR PLATINENSCHNITTE - ESTRATTORE PER STAMPI

Notes

**Material:** Elastomer 70 SH

STOCK



VW CODE

39V 1178/17

VW CODE

39V 1178/17

Standard VW/Audi

## LIFTING PIN VDI 3366 - TRAGSCHRAUBE VDI 3366 - PERNO DI SOLLEVAMENTO VDI 3366



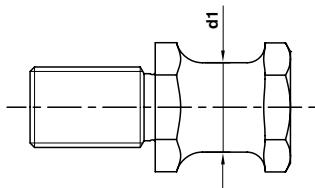
Respect the max load  
 Maximale Nutzlast beachten  
 Rispettare il carico Max

**WARNING - ACHTUNG - ATTENZIONE:**

For safety reason, please consider always that the weight of the die has to be supported by just 2 lifting pins.

Aus Sicherheitsgründen stets berücksichtigen, dass zwei Tragschrauben das gesamte Werkzeuggewicht tragen müssen.

Per ragioni di sicurezza, considerare sempre che il peso dello stampo deve essere sopportato da 2 soli perni.



**VW CODE**  
 39V 1199/3

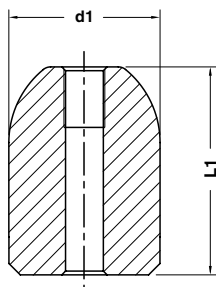
**Notes**

**Material:** CK45 - 700÷800 N/mm<sup>2</sup>

VW CODE	Max load (kg)	Max die weight (kg)	d1	VW CODE	Max load (kg)	Max die weight (kg)	d1
39V 1199/1	320	640	16	39V 1199/4	1500	3000	32
39V 1199/2	500	1000	20	39V 1199/5	2500	5000	40
39V 1199/3	1000	2000	25				

# 39V 1205

## LOCATING PIN - ZENTRIERBOLZEN - CENTRAGGIO



**Notes**

**Material:** 16MnCr5 - HRC: 58÷62



**VW CODE**  
 39V 1205/3

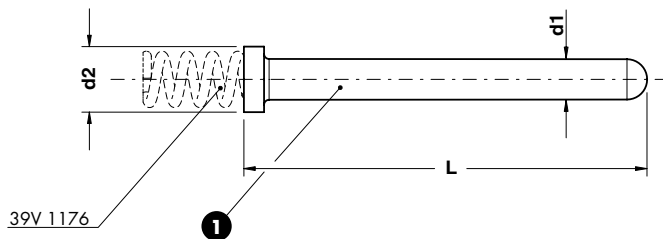
VW CODE	d1	L1
39V 1205/1	22	45
39V 1205/2	22	55
39V 1205/3	40	55
39V 1205/4	40	65
39V 1205/5	40	85

## EJECTOR - ABDRÜCKSTIFT - ESPULSORE

### Notes

**Material:** 16MnCr5  
**HRC:** 58÷60

STOCK



Standard VW/Audi

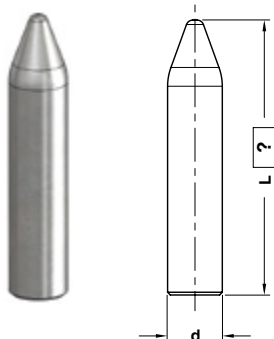


VW CODE

39V 1234/2

VW CODE	d1	d2	L	VW CODE	d1	d2	L	VW CODE	d1	d2	L
39V 1234/1	2,9	8	41	39V 1234/10	5,4	10	42	39V 1234/19	9,9	13	100
39V 1234/2	3,4	8	41	39V 1234/11	5,9	10	42	39V 1234/20	12,9	16	100
39V 1234/3	3,9	8	41	39V 1234/12	6,0	10	30	39V 1234/21	12,9	16	125
39V 1234/4	4,0	8	30	39V 1234/13	6,0	10	40	39V 1234/22	15,9	20	100
39V 1234/5	4,0	8	40	39V 1234/14	6,0	10	60	39V 1234/23	15,9	20	125
39V 1234/6	4,0	8	50	39V 1234/15	6,4	10	42	39V 1234/24	9,9	20	100
39V 1234/7	4,3	10	42	39V 1234/16	8,0	13	80	39V 1234/25	9,9	20	125
39V 1234/8	4,9	10	42	39V 1234/17	8,0	13	100				
39V 1234/9	5,3	10	42	39V 1234/18	9,9	13	80				

## GAGE - EINWEISER - RIFERIMENTO



## Notes

**Material:** 16MnCr5 - **HRC:** 58÷60

Only for replacement

Nur für Reparatur

Solo per riparazione



VW CODE

L=100

39V 1242/3

100

VW CODE

d

39V 1242/1

16

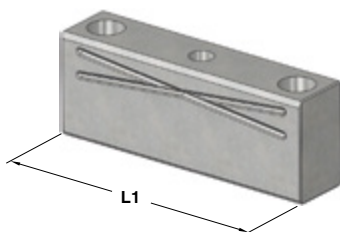
39V 1242/2

20

39V 1242/3

25

## LOCATING BLOCK - FANGBACKE - TASSELLO DI CENTRAGGIO



## Notes

**Material:** 16MnCr5 - **HRC:** 60÷62



VW CODE

39V 1254/10

VW CODE

L1

39V 1254/10

100

39V 1254/11

125

39V 1254/12

160

39V 1254/13

200

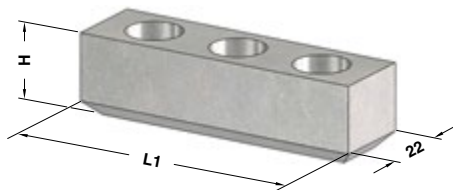


KEY - PASSFEDER - CHIAVETTA

Notes

Material: CK45

STOCK



VW CODE

39V 1304/2

VW CODE	H	L1	VW CODE	H	L1	VW CODE	H	L1
39V 1304/1	14	50	39V 1304/7	22	50	39V 1304/11	40	50
39V 1304/2	14	80	39V 1304/8	22	80	39V 1304/12	40	80
39V 1304/3	14	100	39V 1304/9	22	100	39V 1304/13	40	100
39V 1304/4	14	125	39V 1304/10	22	125	39V 1304/14	40	125

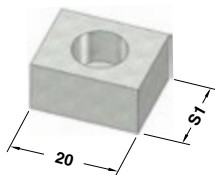
Standard VW/Audi

KEY - PASSFEDER - CHIAVETTA

Notes

Material: CK45

STOCK

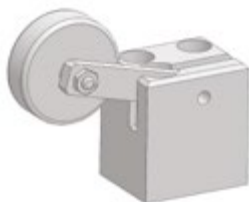


VW CODE

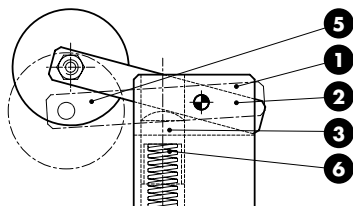
39V 1304/6

VW CODE	S1
39V 1304/5	12
39V 1304/6	16

ROLLER STOCK LIFTER - FEDERENDE LAUFROLLE - RULLINO SOLLEVAMENTO NASTRO



39V 1569/1



Notes	
1	Material: C15
2	Material: S235JRG2K
3	Material: 42CrMo4
5	Material: Steel
6	Spring



39V 1569/2



39V 1569/3



39V 1569/4

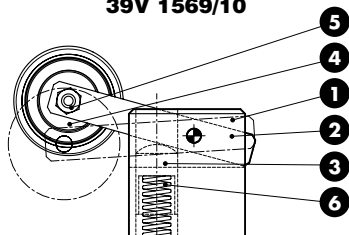
	VW CODE
	39V 1569/2

VW CODE
39V 1569/1
39V 1569/2
39V 1569/3
39V 1569/4

ROLLER STOCK LIFTER - FEDERENDE LAUFROLLE - RULLINO SOLLEVAMENTO NASTRO



39V 1569/10



- Notes**
- 1 **Material:** C15
  - 2 **Material:** S235JRG2K
  - 3 **Material:** 42CrMo4
  - 4 **Material:** Steel
  - 5 **DIN 625-1 (6303-2Z)**
  - 6 **Spring**



Standard VW/Audi



39V 1569/11



39V 1569/12  
39V 1569/14



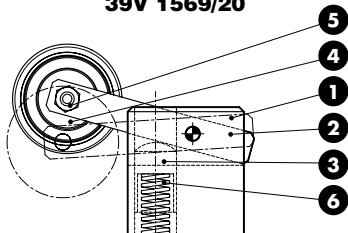
39V 1569/13

	VW CODE
	39V 1569/11
VW CODE	
39V 1569/10	
39V 1569/11	
39V 1569/12	
39V 1569/13	
39V 1569/14	

ROLLER STOCK LIFTER - FEDERENDE LAUFROLLE - RULLINO SOLLEVAMENTO NASTRO



39V 1569/20



- Notes**
- 1 Material: C15
  - 2 Material: S235JRG2K
  - 3 Material: 42CrMo4
  - 4 Material: Steel
  - 5 Material: Steel + Vulkolan
  - 6 Spring



39V 1569/21



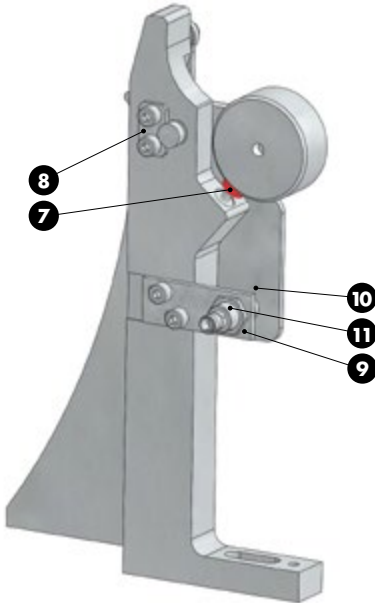
39V 1569/22



39V 1569/23

	VW CODE
	39V 1569/21
VW CODE	
39V 1569/20	
39V 1569/21	
39V 1569/22	
39V 1569/23	

**GAGE WITH POSITION CONTROL**  
**KLAPPEINWEISER MIT LAGEKONTROLLE**  
**RIFERIMENTO CON CONTROLLO DI POSIZIONE**



**Notes**

**1 2 3 5 8**

**Material:** 16MnCr5

**4 9 10 Material:** S235JR2K

**6** M10x30 DIN 7991

**7** DESTACO 202208M

**11** BALLUFF

**12** C13.30.08012 (x2)

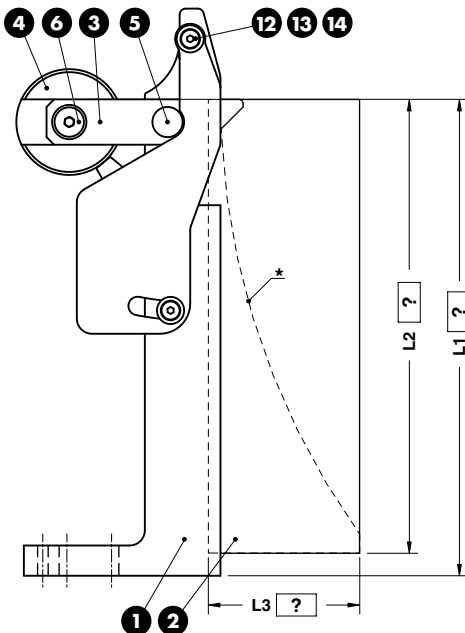
**13** Washer PCM 241201.5M

**14** E46.20.008012008

**15** DIN 912 (x4)



\* Bei Konstruktion festlegen  
 Set in construction  
 Realizzato in costruzione



\*\* Gemäß zeichnung  
 Come a disegno

\*\*\* Spiegelverkehrt  
 Opposto al disegno

ORDER EXAMPLE	VW CODE	L1=315	L2=310	L3=50
	1D 301260.02	315	310	50

VW CODE	FORM
1D 301260.01	As shown in drawing**
1D 301260.02	Opposite to drawing***

