



Die Components  
Normalien  
Componenti

FCA

FIAT CHRYSLER AUTOMOBILES

**OMCR**<sup>®</sup>  
STANDARD DIE COMPONENTS

2018.01

<p><b>010.90.05</b></p> 	<p><b>010.90.05</b></p> 	<p><b>010.90.10</b></p> 	<p><b>017.90.05</b></p> 	<p><b>025.90.05</b></p> 
<p>Stamp Buchstabenstempel Gruppo punzone</p>	<p>Backing plate Druckplatte Distanziale</p>	<p>Stamp Buchstabenstempel Gruppo punzone marchio emblematico</p>	<p>Locating cone Kegeldistanz Cono di centraggio</p>	<p>Ball caster Kugellrollensystem Sfera portante</p>
<p>172</p>	<p>172</p>	<p>173</p>	<p>174</p>	<p>174</p>
<p><b>025.90.10</b></p> 	<p><b>025.90.35</b></p> 	<p><b>025.90.40</b></p> 	<p><b>025.90.45</b></p> 	<p><b>025.90.55</b></p> 
<p>Trestle guide group Führungsgruppe Gruppo guida traliccio</p>	<p>Coil guide roller Bandführung Guida nastro mobile</p>	<p>Coil guide roller Bandführung Guida nastro fisso</p>	<p>Roller group Förderrolle Gruppo rullini</p>	<p>Roller Rolle Rotella</p>
<p>175</p>	<p>176</p>	<p>176</p>	<p>177</p>	<p>178</p>
<p><b>025.90.60</b></p> 	<p><b>025.90.65</b></p> 	<p><b>025.90.70</b></p> 	<p><b>025.90.75</b></p> 	<p><b>025.90.80</b></p> 
<p>Spring group Federeinheit Gruppo molla</p>	<p>Spring group Federeinheit Gruppo molla</p>	<p>Lifter stop Anschlag Heber Gruppo arresto traliccio</p>	<p>Spring group Federeinheit Gruppo molla</p>	<p>Stripper for blanking dies Abstreifer für platinenschnitte Estrattore per stampi</p>
<p>178</p>	<p>179</p>	<p>179</p>	<p>180</p>	<p>180</p>
<p><b>025.90.85</b></p> 	<p><b>025.90.90</b></p> 	<p><b>025.90.95</b></p> 	<p><b>025.90.95</b></p> 	<p><b>025.90.105</b></p> 
<p>Roller stock lifter Federnde laufrolle Rullino sollevamento nastro</p>	<p>Spring group Federeinheit Gruppo molla</p>	<p>Pad retainer Zugbolzensatz Gruppo di arresto</p>	<p>Pad retainer Zugbolzensatz Gruppo di arresto</p>	<p>Roller Rolle Gruppo rullo di evacuazione</p>
<p>181</p>	<p>181</p>	<p>182</p>	<p>182</p>	<p>183</p>

<p><b>025.90.135</b></p>  <p>Support Halterung Gruppo seal master support</p> <p>184</p>	<p><b>025.90.135</b></p>  <p>Support Halterung Gruppo seal master</p> <p>184</p>	<p><b>025.90.135</b></p>  <p>Support Halterung Gruppo seal master</p> <p>185</p>	<p><b>025.90.145</b></p>  <p>Covering belt Abdeckung Gruppo riparo cinghia</p> <p>185</p>	<p><b>025.90.150</b></p>  <p>Support Halterung Gruppo supporto per pista magnetica</p> <p>186</p>
<p><b>025.90.155</b></p>  <p>Guide post group Führungssäule mit führungslager Gruppo colonna</p> <p>186</p>	<p><b>025.90.160</b></p>  <p>Spring group Federeinheit Gruppo molla</p> <p>187</p>	<p><b>030.90.05</b></p>  <p>Compensation block Abstandsblock Tassello di compensazione</p> <p>188</p>	<p><b>030.90.10</b></p>  <p>Spacer plate toothed Distanzplatte gezahnt Tassello di compensazione</p> <p>188</p>	<p><b>030.90.15</b></p>  <p>Pre-centering punch Stempelvorzentrierung Precentraggio punzone</p> <p>189</p>
<p><b>030.90.20</b></p>  <p>Air pin Unterluftbolzen Candela</p> <p>189</p>	<p><b>030.90.25</b></p>  <p>Bush Buchs Boccola</p> <p>190</p>	<p><b>030.90.40</b></p>  <p>Gage Einweiser Riferimento</p> <p>190</p>	<p><b>030.90.45</b></p>  <p>Gage for sensor Einweiser für teillagekontrolle Riferimento per sensore</p> <p>191</p>	<p><b>030.90.165</b></p>  <p>Air relief tubing Tube Tubetto sfogo aria</p> <p>191</p>
<p><b>045.90.90</b></p>  <p>Key Passfeder Chiavetta</p> <p>192</p>	<p><b>050.90.65</b></p>  <p>Distance plate for wear plate Höhenausgleich für gleitplatte Distanziale per piastra</p> <p>193</p>	<p><b>050.90.70</b></p>  <p>Wear plate self-lubricating Gleitplatte bronze mit festschmierstoff Piastra guida autolubrificante</p> <p>193</p>	<p><b>050.90.75</b></p>  <p>Wear plate steel Gleitplatte stahl Piastra guida in acciaio</p> <p>194</p>	<p><b>050.90.90</b></p>  <p>Wear plate steel Deckleiste Stahl Piastra guida in acciaio</p> <p>194</p>

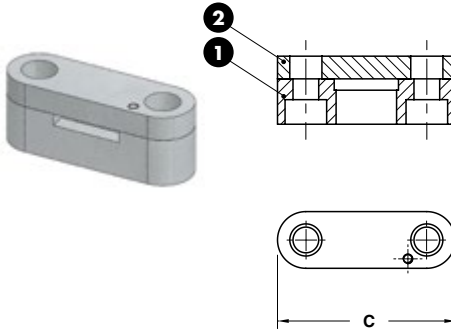
050.90.95	050.90.105	050.90.110	050.90.115	050.90.120
				
Wear plate steel Deckleiste Stahl Piastra guida in acciaio	"V" driver steel Prismenführung Guida a "V" in acciaio	"V" driver self-lubricating Prismenführung bronze mit festschmierstoff Guida a "V" autolubrificante	Distance plate for "V" driver Höhenausgleich für Prismenführung Distanziale per guida a "V"	Angular guide Winkelleiste Guida angolare
195	195	196	196	197
050.90.150	050.90.180	050.90.200	050.90.205	065.90.30
				
Fork pawl Befestigungsplatte Forcella nottolino	Positive return plate Zwangsrückholer Gancio di sicurezza	Stop block Anschlag Arresto	Slide stop block Schieberanschlag Arresto slitta	Retainer bolt Zugbolzensatz Gruppo tirante
198	198	199	199	200
065.90.35	065.90.40	065.90.45	065.90.65	065.90.70
				
Retainer bolt Zugbolzensatz Gruppo tirante	Retainer bolt Zugbolzensatz Gruppo tirante	Retainer bolt Zugbolzensatz Gruppo tirante	Shock absorber Halteelementü Ammortizzatore	Guide post DIN 9833 Führungssäule DIN 9833 Colonna guida DIN 9833
201	202	203	204	205
065.90.70	065.90.75	065.90.80	065.90.85	065.90.85
				
Guide post DIN 9833 Führungssäule DIN 9833 Colonna guida DIN 9833	Guide post Führungssäule Colonna guida	Guide post DIN 9833 Führungssäule DIN 9833 Colonna guida DIN 9833	Bush self-lubricating DIN 9834 Führungsbuchse DIN 9834 Boccola autolubrificante DIN 9834	Toe clamp Haltestück Ritegno per boccola
206	207	208	209	209

<p><b>065.90.95</b></p>  <p>Bush self lubricating Führungsbuchse Boccola autolubrificante</p> <p>210</p>	<p><b>065.90.100</b></p>  <p>Toe clamp Haltestück Ritegno per boccola</p> <p>210</p>	<p><b>065.90.120</b></p>  <p>Guide bar self-lubricating VDI 3357 Führungsleite bronze mit festschmierstoff VDI 3357 Lardone autolubrificante VDI 3357</p> <p>211</p>	<p><b>065.90.120</b></p>  <p>Wear plate steel VDI 3357 Gleitplatte stahl VDI 3357 Piastra guida in acciaio VDI 3357</p> <p>212</p>	<p><b>065.90.125</b></p>  <p>Distance plate for wear plate Höhenausgleich für gleitplatte</p> <p>213</p>
<p><b>065.90.130</b></p>  <p>Pad retainer pin Steckbolzen Perno di arresto</p> <p>214</p>	<p><b>065.90.190</b></p>  <p>Locating pin Zentrierbolzen Centraggio</p> <p>214</p>	<p><b>065.90.195</b></p>  <p>Balance block Distanzstück Distanziale</p> <p>215</p>	<p><b>075.90.45</b></p>  <p>Spring plunger Federne druckstücke Espulsore a molla</p> <p>215</p>	<p><b>075.90.110</b></p>  <p>Pressure plate Druckplatte Piastra di reazione</p> <p>216</p>
<p><b>075.90.115</b></p>  <p>Pressure plate Druckplatte Piastra di reazione</p> <p>216</p>	<p><b>075.90.120</b></p>  <p>Pressure plate Druckplatte Piastra di reazione</p> <p>217</p>	<p><b>080.90.30</b></p>  <p>Rear guide Hintere Führung Guida posteriore</p> <p>218</p>	<p><b>080.90.40</b></p>  <p>Angular guide Winkelleiste Guida angolare</p> <p>218</p>	<p><b>080.90.45</b></p>  <p>Toe clamp Haltestück Ritegno</p> <p>218</p>
<p><b>080.90.45</b></p>  <p>Pin Steckbolzen Perno</p> <p>219</p>	<p><b>080.90.45</b></p>  <p>Wear plate Gleitplatte Piastra guida</p> <p>219</p>	<p><b>080.90.50</b></p>  <p>Pawl Klinke Nottolino</p> <p>219</p>	<p><b>080.90.55</b></p>  <p>Hookup Hinweis Rimando</p> <p>220</p>	<p><b>080.90.55</b></p>  <p>Shim Abstimscheibe Spessore</p> <p>220</p>

080.90.60	080.90.65	080.90.70	080.90.75	080.90.80
				
Clamp Befestigungselement Morsetto	Union nut Befestigungselement Dado di unione	Union nut Befestigungselement Dado di unione	Sleeve Führungseinheit Canotto guida	Guide post Führungssaule Colonna per traliccio
220	221	221	222	222
080.90.90	085.90.135	085.90.140	095.90.20	095.90.25
				
Elastomer cap Elastomerdruckstück Puntalino elastico	Coupling plate Befestigungsplatte Staffa di reazione	Coupling nut Kupplungsmutter Aggancio staffa	Elastomer spring Elastomerfeder Molla in elastomero	Elastomer spring pin Aufnahmebolzen Perno per molle in elastomero
223	223	224	225	225
095.90.30	095.90.35	095.90.60	095.90.75	STQ 10012 - BR
				
Replacement lifting pin for lifting bracket Ersatztragbolzen für tragwange Perno di ricambio per staffa di sollevamento	Lifting pin Tragbolzen mit fallringsicherung Perno di sollevamento	Lifting bracket Tragwange mit fallringsicherung Staffa di sollevamento	Lifting pin Tragbolzen mit fallringsicherung Perno di sollevamento	Wear plate self-lubricating Gleitplatte bronze mit festschmierstoff Piastra guida autolubrificante
226	227	228	229	230
STQ 10012 - ACC	STQ 10012 - TIPO	STQ 10012 - BR	STQ 10012 - ACC	STQ 10016 - BR
				
Wear plate steel Gleitplatte stahl Piastra guida in acciaio	Distance plate for wear plate Höhenausgleich für gleitplatte Distanziale per piastra	Guide bar self-lubricating Führungsleite bronze mit festschmierstoff Lardone autolubrificante	Guide bar steel Führungsleite stahl Lardone in acciaio	Angular guide Winkelleiste Guida angolare
231	232	233	233	234

STQ 20027 - RIF_M18	STQ 40005 - ST	STQ 40005 - PIA-PA	STQ 40005 - PIA-PA	STQ 40005 - PIA-PA
				
Front gage Einlaufanschlag Portasensore	Bracket for clamps Klammern für clamps Staffe per clamps	Plate for clamps Haltestücke für clamps Piastrina per clamps	Plate for clamps Haltestücke für clamps Piastrina per clamps	Plate for clamps Haltestücke für clamps Piastrina per clamps
235	236	237	237	238
STQ 40005 - PIA-PR	STQ 40010 - CNT	STQ 40011 - CTN	STQ 40013 - CH	STQ 40016 - TNRT
				
Plate for clamps Haltestücke für clamps Piastrina per clamps	Locating Zentrierung Centraggio stampo	Stop block Anschlag Fine corsa diritto e "V"	Key Passfeder Chiavetta di reazione	Retainer bolt Zugbolzensatz Gruppo tirante di sicurezza
238	239	239	239	240

## STAMP - BUCHSTABENSTEMPEL - GRUPPO PUNZONE



## Notes

**1 2** Material: CK45

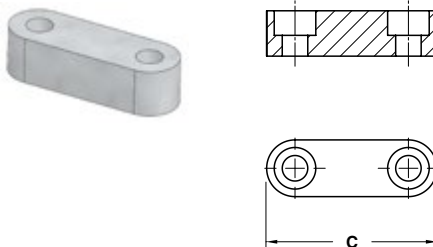
STOCK



FCA CODE
GRLO_4P_163247

FCA CODE	C	Nr. of Punch
GRLO_3P_123045	45	3
GRLO_4P_163247	47	4
GRLO_8P_324863	63	8

## BACKING PLATE - DRUCKPLATTE - DISTANZIALE



## Notes

Material: CK45

STOCK

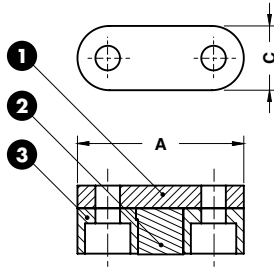


FCA CODE
TCON_4P_163247

FCA CODE	C	Nr. of punch
TCON_3P_123045	45	3
TCON_4P_163247	47	4
TCON_8P_324863	63	8



STAMP - BUCHSTABENSTEMPEL - PUNZONE MARCHIO EMBLEMATICO



Notes

1 2

Material: 90MnCrV8 - HRC: 54÷56

3 Material: 36CrNiMo4 - HRC: 48÷50

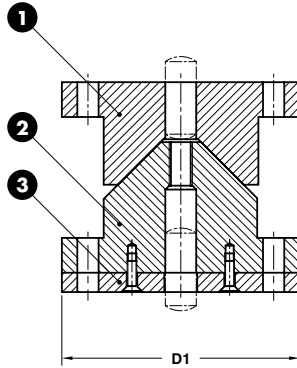
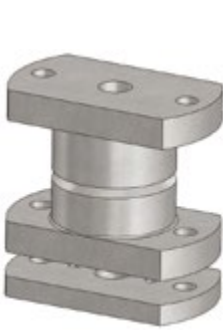


FCA CODE
GRME_N15052022

FCA CODE	A	C
GRME_N10044017	44	17
GRME_N15052022	52	22

Standard FCA

LOCATING CONE - KEGELDISTANZ - CONO DI CENTRAGGIO



Notes

1 2

Material: 16MnCr5 - HRC: 60÷62

3 Material: CK45



FCA CODE

CN\_120\_B

FCA CODE	COMMODITY CODE	D1
CN_100_B	19-010-0082	100
CN_120_B	19-010-0085	120

BALL CASTER - KUGELROLLENSYSTEM - SFERA PORTANTE



Notes

Material: Steel

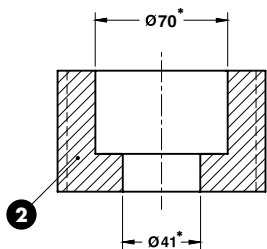
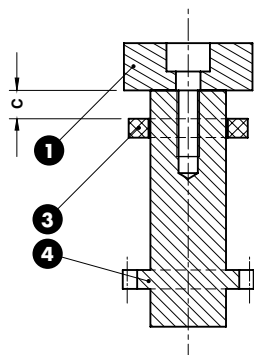
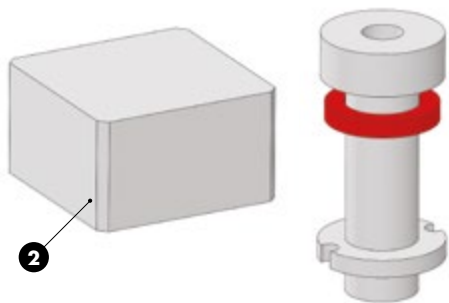


FCA CODE

SF\_KU30

FCA CODE
SF_KU30

TRESTLE GUIDE GROUP - FÜHRUNGSGRUPPE - GRUPPO GUIDA TRALICCIO

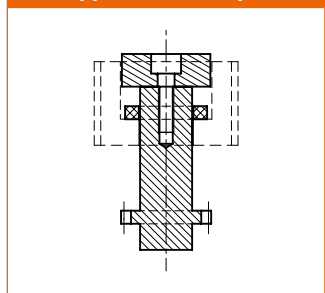


\* To be performed after assembling with trestle.  
 Muss nach dem Zusammenbau mit der Schiene durchgeführt werden.  
 Da eseguire dopo assemblaggio con traliccio.

Notes

- 1 2 Material: CK45
- 3 Material: Urelast 92 SH
- 4 Material: 16MnCr5 - HRC: 58÷60

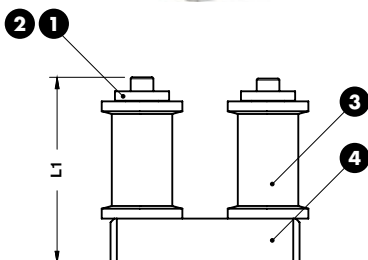
Application example



Standard FCA

ORDER EXAMPLE	FCA CODE
	GRG_TRA_C25
FCA CODE	
C	
GRG_TRA_C15	15
GRG_TRA_C25	25
GRG_TRA_C30	50

COIL GUIDE ROLLER - BANDFÜHRUNG - GUIDA NASTRO FISSO



Notes

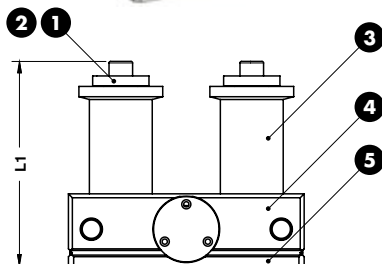
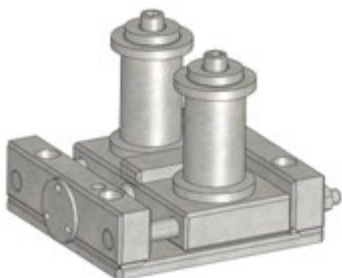
- 1 2 Material: CK45
- 3 Material: 16MnCr5 - HRC: 58÷60
- 4 Material: Si37



ORDER EXAMPLE	FCA CODE
	GUN_F_73159

FCA CODE	L1	Stroke
GUN_F_55141	141	13 - 23
GUN_F_73159	159	48

COIL GUIDE ROLLER - BANDFÜHRUNG - GUIDA NASTRO MOBILE



Notes

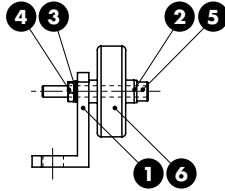
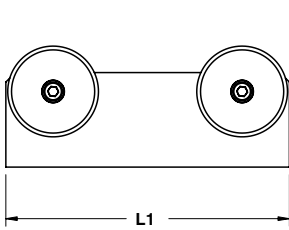
- 1 2 Material: CK45
- 3 Material: 16MnCr5 - HRC: 58÷60
- 4 5 Material: Si37



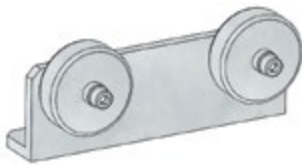
ORDER EXAMPLE	FCA CODE
	GUN_M_73157

FCA CODE	L1	Stroke
GUN_M_55150	150	13 - 23
GUN_M_73157	157	48

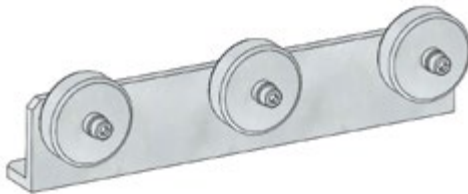
ROLLER GROUP - FÖRDERROLLE - GRUPPO RULLINI



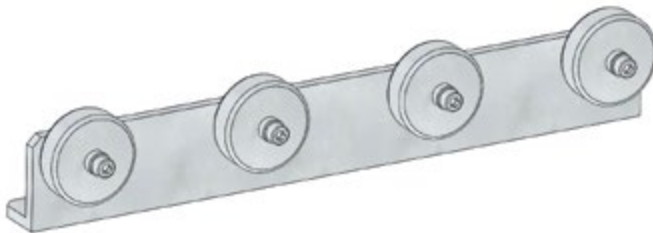
- Notes**
- 1 Material: St52
  - 2 3 Washer for M6
  - 4 Nut for M6
  - 5 M6x50 DIN 912
  - 6 025.90.55



FORM A



FORM B



FORM C

Standard FCA

ORDER EXAMPLE	FCA CODE
	SP_R_250

FCA CODE	L1	FORM
SP_R_150	150	A
SP_R_250	250	B
SP_R_350	350	C

## ROLLER - ROLLE - ROTELLA

## Notes

**Material:** Steel

STOCK



FCA CODE

ROT\_048015

FCA CODE

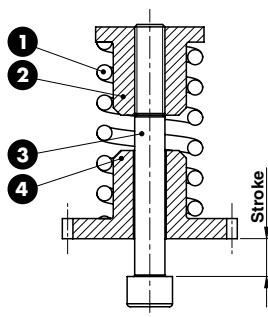
ROT\_048015

## SRING GROUP - FEDEREINHEIT - GRUPPO MOLLA

## Notes

- 1 Spring
- 2 4 **Material:** CK45
- 3 M12x150 DIN 912

STOCK



FCA CODE

GR\_MTR\_C15

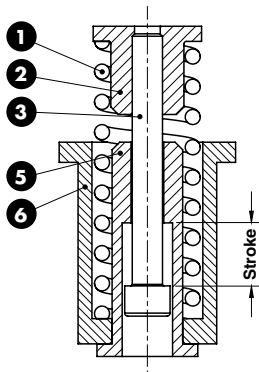
FCA CODE

Stroke

GR\_MTR\_C15

15

## SRING GROUP - FEDEREINHEIT - GRUPPO MOLLA



## Notes

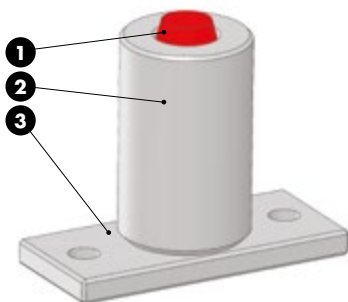
- 1 Spring
- 2 5 6 **Material:** CK45
- 3 M12x150 DIN 912



<b>FCA CODE</b>	GR_MO_C50
-----------------	-----------

FCA CODE	Stroke
GR_MO_C25	25
GR_MO_C50	50

## LIFTER STOP - ANSCHLAG HEBER - GRUPPO ARRESTO TRALICCIO



## Notes

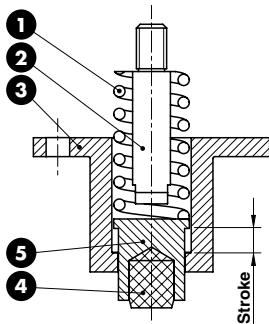
- 1 **Material:** Elastomer 90SH
- 2 **Material:** C40
- 3 **Material:** Fe320



<b>FCA CODE</b>	GRA_TRA1
-----------------	----------

FCA CODE
GRA_TRA1

## SPRING GROUP - FEDEREINHEIT - GRUPPO MOLLA



## Notes

- 1 Spring
- 2 3 **Material:** 16MnCr5
- 4 **Material:** Urelast 90 SH
- 5 **Material:** 36CrNiMo4



FCA CODE

GR\_RIM\_TRA1

FCA CODE

Stroke

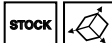
GR\_RIM\_TRA1

13

## STRIPPER FOR BLANKING DIES - ABSTREIFER FÜR PLATINENSCHNITTE - ESTRATTORE PER STAMPI



## Notes

**Material:** Elastomer 70SH

FCA CODE

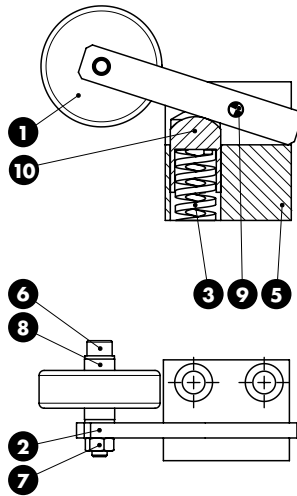
ES\_EL\_027306

FCA CODE

ES\_EL\_027306



ROLLER STOCK LIFTER - FEDERENDE LAUFROLLE - RULLINO SOLLEVAMENTO NASTRO



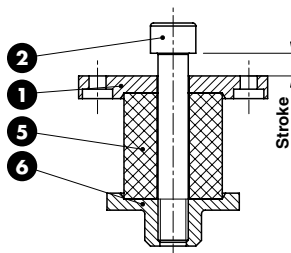
Notes

- 1 Material:** Steel  
ROT\_048015 - 025.90.55
- 2 5 Material:** Si37
- 3** Spring - load = 2 kg
- 6** M6x40 DIN 912
- 7** M6 DIN 934
- 8** DIN 127
- 9** 6x30 DIN 6325
- 10 Material:** 16MnCr5

STOCK	
ORDER EXAMPLE	FCA CODE GRRU_SN_040080
FCA CODE GRRU_SN_040080	

Standard FCA

SRING GROUP - FEDEREINHEIT - GRUPPO MOLLA

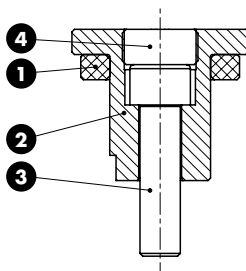


Notes

- 1 Material:** CK45
- 2** M16x100 DIN 912
- 5 Material:** Elastomer 92 SH
- 6 Material:** 36NiCrMo4

STOCK	
ORDER EXAMPLE	FCA CODE GR_MTR_C12
FCA CODE	Stroke
GR_MTR_C12	12

## PAD RETAINER - ZUGBOLZENSATZ - GRUPPO DI ARRESTO



## Notes

- 1 Material:** Elastomer 90SH
- 3** M16x60 DIN 912
- 4 Material:** CK45
- 2 Material:** 36CrNiMo4

STOCK



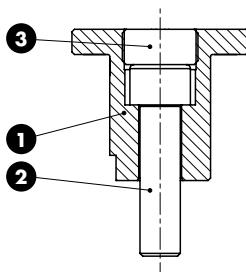
FCA CODE

GR\_AR\_070100

FCA CODE

GR\_AR\_070100

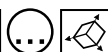
## PAD RETAINER - ZUGBOLZENSATZ - GRUPPO DI ARRESTO



## Notes

- 1 Material:** 36CrNiMo4
- 2** M16x60 DIN 912
- 3 Material:** CK45

STOCK



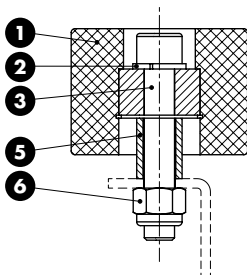
FCA CODE

GR\_SI\_070100

FCA CODE

GR\_SI\_070100

## ROLLER - ROLLE - GRUPPO RULLO DI EVACUAZIONE



## Notes

- 1 **Material:** Nylon
- 2 DIN 127
- 3 M12x70 DIN 912
- 5 **Material:** CK45
- 6 M12 DIN 6924



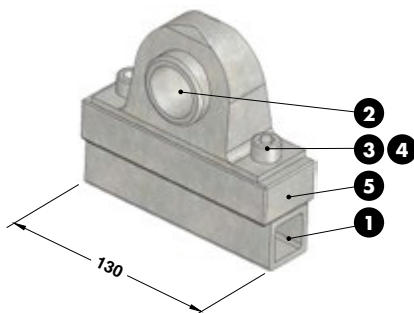
FCA CODE

GRRU\_EV\_070050

FCA CODE

GRRU\_EV\_070050

## SUPPORT - HALTERUNG - GRUPPO SEAL MASTER



## Notes

- ① ⑤ **Material:** Si37
- ② **Material:** PB30
- ③ M10x20 DIN 912
- ④ SCHNORR Ø10



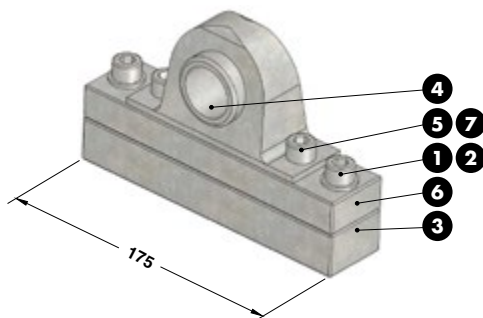
FCA CODE

GR\_SMF\_040130

FCA CODE

GR\_SMF\_040130

## SUPPORT - HALTERUNG - GRUPPO SEAL MASTER



## Notes

- ① M10x45 DIN 912
- ② Ø10 DIN 125
- ③ ⑥ **Material:** Si37
- ④ **Material:** PB30
- ⑤ M10x20 DIN 912
- ⑦ SCHNORR Ø10



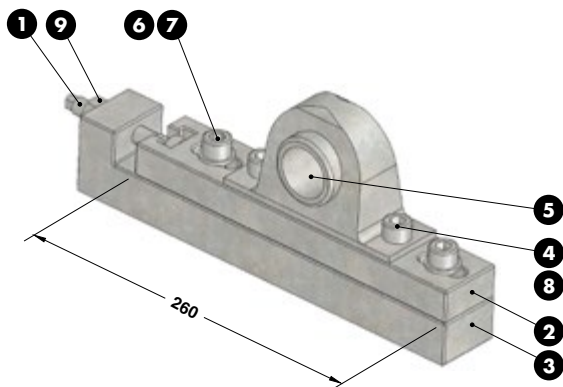
FCA CODE

GR\_SMF\_040175

FCA CODE

GR\_SMF\_040175

## SUPPORT - HALTERUNG - GRUPPO SEAL MASTER



## Notes

- 1** **Material:** 16MnCr5
- 2 3** **Material:** St37
- 4** M10x20 DIN 912
- 5** **Material:** PB30
- 6** M10x45 DIN 912
- 7** Ø10 DIN 125
- 8** SCHNORR Ø10
- 9** M10 DIN 934



## FCA CODE

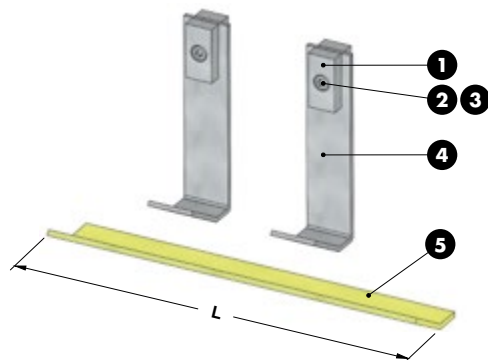
GR\_SMR\_040260

## FCA CODE

GR\_SMR\_040260

Standard FCA

## COVERING BELT - ABDECKUNG - GRUPPO RIPARO CINGHIA



## Notes

- 1 4** **Material:** St37
- 5** **Material:** Ms58
- 2 3** Ø10 DIN 127 - M10x20 DIN 912



## FCA CODE

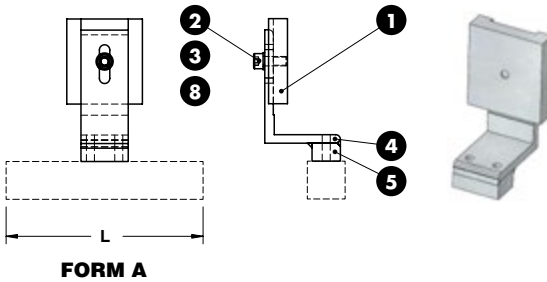
GRRI\_CI\_440

## FCA CODE

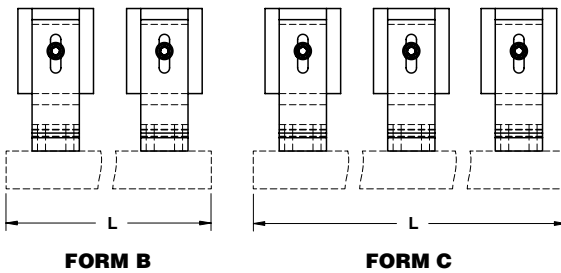
## L

GRRI_CI_420	420
GRRI_CI_440	440
GRRI_CI_485	485
GRRI_CI_620	620

SUPPORT - HALTERUNG - GRUPPO SUPPORTO PER PISTA MAGNETICA

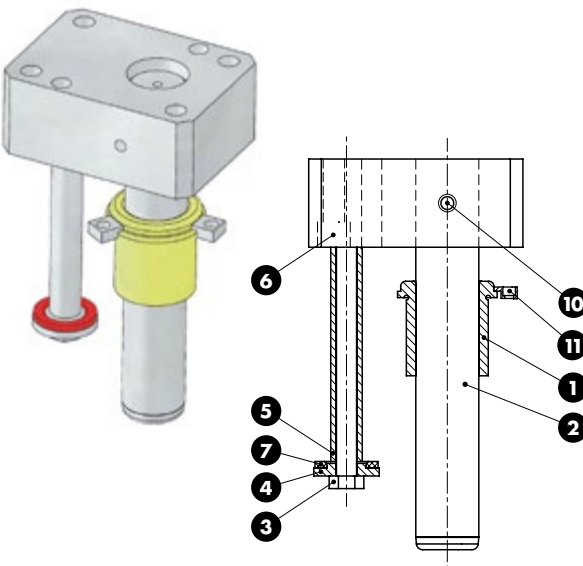


- Notes**
- ① ④ ⑤ **Material:** St37
  - ② Ø10 DIN 127
  - ③ M10x25 DIN 912
  - ⑧ Ø10 DIN 125



	FCA CODE	
	GRSU_MG_465	
FCA CODE	L	FORM
GRSU_MG_310	310	A
GRSU_MG_465	465	B
GRSU_MG_600	600	B
GRSU_MG_755	755	B
GRSU_MG_800	800	C

GUIDE POST GROUP - FUHRUNGSSÄULE MIT FUHRUNGSLAGER - GRUPPO COLONNA

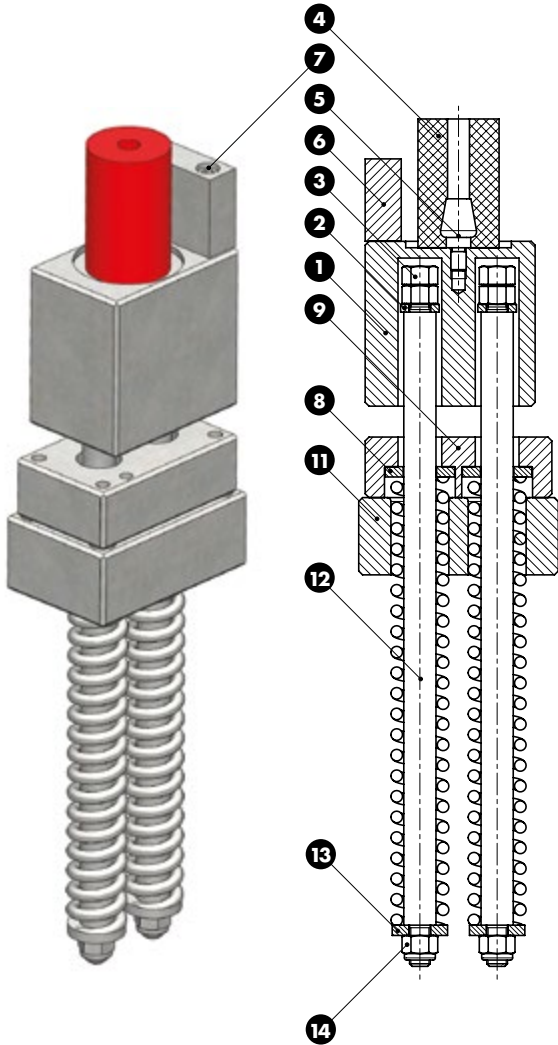


- Notes**
- ① **Material:** Bronze - HB>190
  - ② **Material:** 16MnCr5 - HRC: 58÷60
  - ③ ④ **Material:** CK45
  - ⑤ **Material:** C12
  - ⑥ **Material:** St52
  - ⑦ **Material:** Elastomer 90 SH
  - ⑩ M12x30 DIN 913
  - ⑪ **Material:** St37



	FCA CODE	
	GRC_AR_D50300	
FCA CODE		
GRC_AR_D50300		

SRING GROUP - FEDEREINHEIT - GRUPPO MOLLA



Notes

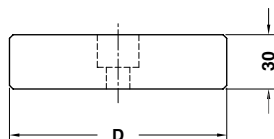
- 1 9 11** Material: St37
- 2 8 13** Material: CK45
- 3** M16 DIN 934
- 4 5** 095.90.20 - 095.90.25
- 6 12** Material: 36NiCrMo4
- 7** M10x60 DIN912
- 14** M16 DIN 6924



Standard FCA

	FCA CODE
	GR_MTR_C120
FCA CODE	Stroke
GR_MTR_C120	120

## COMPENSATION BLOCK - ABSTANDSBLOCK - TASSELLO DI COMPENSAZIONE



## Notes

**Material:** 42CrMo4 - **HRC:** 46÷48

STOCK

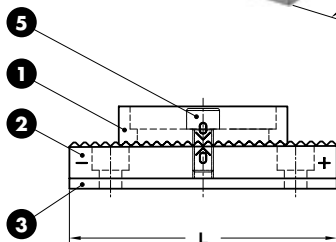
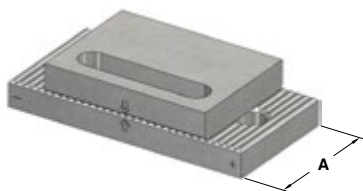


FCA CODE

TC\_100030

FCA CODE	COMMODITY CODE	D
TC_080030	19-235-0058	80
TC_100030	19-235-0057	100
TC_120030	19-235-0054	120

## SPACER PLATE TOOTHED - DISTANZPLATTE GEZAHNT - TASSELLO DI COMPENSAZIONE



## Notes

- ① ② **Material:** 90MnCrV8  
**HRC:** 58÷60
- ③ **Material:** X155CrVMo12
- ⑤ DIN 912

STOCK



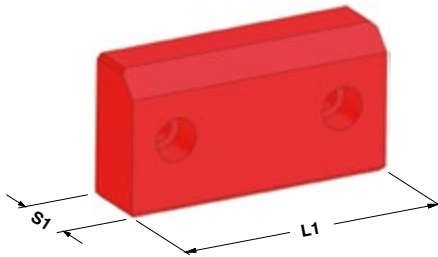
FCA CODE

TCRS\_16080

FCA CODE	COMMODITY CODE	A	L
TCRS_13060	19-010-0123	60	130
TCRS_16080	19-010-0122	80	160



PRE-CENTERING PUNCH - STEMPELVORZENTRIERUNG - PRECENTRAGGIO PUNZONE



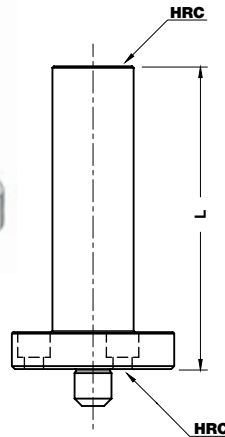
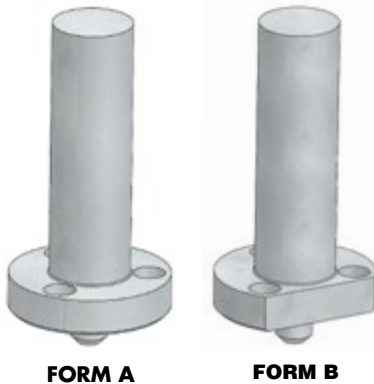
**Notes**  
**Material:** Urelast 90 SH



ORDER EXAMPLE	FCA CODE
	PPSP_90SH

FCA CODE	A	L
PPSP100_90SH	100	20
PPSP_90SH	115	31

AIR PIN - UNTERLUFTBOLZEN - CANDELA



**Notes**  
**Material:** 42CrMo4 - HRC: 50+52



ORDER EXAMPLE	FCA CODE
	CA_A_50

FCA CODE	COMMODITY CODE	L	FORM	FCA CODE	COMMODITY CODE	L	FORM
CA_A_25	19-235-0142	25	A	CA_B_25	19-235-0068	25	B
CA_A_50	19-235-0141	50	A	CA_B_50	19-235-0067	50	B
CA_A_75	19-235-0140	75	A	CA_B_75	19-235-0066	75	B
CA_A_100	19-235-0143	100	A	CA_B_100	19-235-0065	100	B
CA_A_125	19-235-0139	125	A	CA_B_125	19-235-0064	125	B
CA_A_150	19-235-0138	150	A	CA_B_150	19-235-0063	150	B
CA_A_175	19-235-0073	175	A	CA_B_175	19-235-0062	175	B
CA_A_200	19-235-0071	200	A	CA_B_200	19-235-0061	200	B
CA_A_225	19-235-0070	225	A	CA_B_225	19-235-0060	225	B
CA_A_250	19-235-0069	250	A	CA_B_250	19-235-0059	250	B

## BUSH - BUCHS - BOCCOLA



## Notes

**Material:** 16MnCr5 - **HRC:** 58+60

STOCK



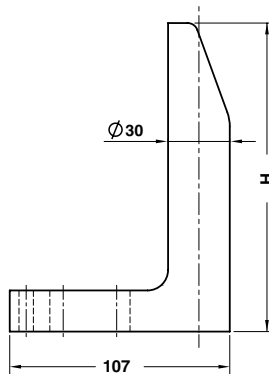
FCA CODE

BOCB\_060125

FCA CODE

BOCB\_060125

## GAGE - EINWEISER - RIFERIMENTO



## Notes

**Material:** CK60

STOCK



FCA CODE

RIF\_L\_090

FCA CODE

COMMODITY CODE

H

RIF\_L\_065

19-010-1706

65

RIF\_L\_090

19-010-1709

90

RIF\_L\_120

19-010-1712

120

RIF\_L\_150

19-010-1715

150

RIF\_L\_180

19-010-1718

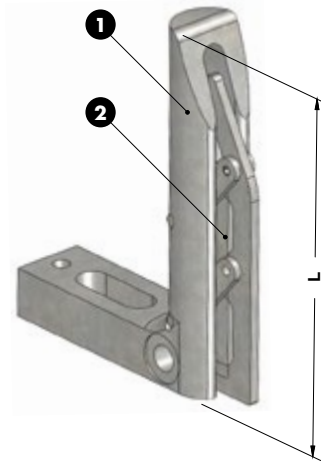
180

RIF\_L\_250

19-010-1725

250

## GAGE FOR SENSOR - EINWEISER FÜR TEILLAGEKONTROLLE - RIFERIMENTO PER SENSORE



## Notes

- ① **Material:** CK60  
 ② **Material:** St37 - HRC: 58÷60



FCA CODE

RIF\_M12L150

FCA CODE

L

RIF\_M12L120

120

RIF\_M12L150

150

RIF\_M12L180

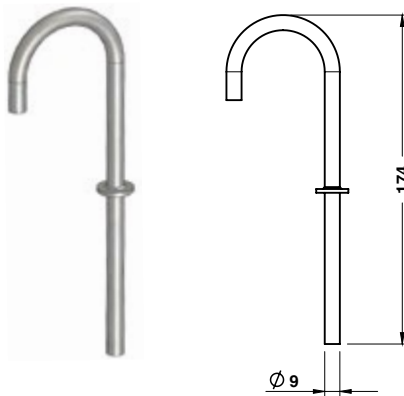
180

RIF\_M12L250

250

Standard FCA

## AIR RELIEF TUBING - TUBE - TUBETTO SFOGO ARIA



## Notes

**Material:** Steel

FCA CODE

TU\_08174

FCA CODE

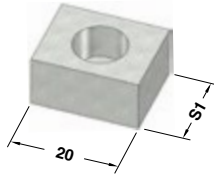
TU\_08174

KEY - PASSFEDER - CHIAVETTA

Notes

Material: CK45

STOCK

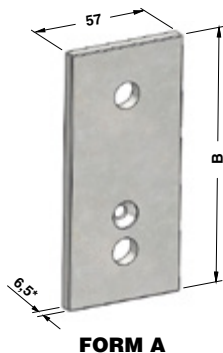


FCA CODE	
CH_MA_101620	

FCA CODE	S1
CH_MA_081220	12
CH_MA_101620	16

## DISTANCE PLATE FOR WEAR PLATE HÖHENAUSGLEICH FÜR GLEITPLATTE DISTANZIALE PER PIASTRA

\* Provided 0,5 mm plus for adjustment  
wird mit 0,5 mm Aufmaß geliefert, zur Anpassung am Werkzeug  
Fornita maggiorata di 0,5 mm per adattamento su stampo



FORM A



FORM B

## Notes

**Material:** St37

STOCK



ORDER  
EXAMPLE

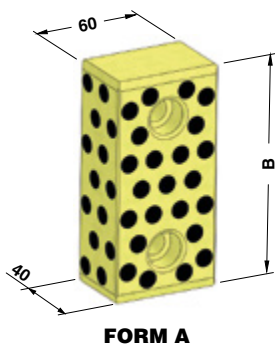
FCA CODE

PSP2S\_057006158

FCA CODE	B	FORM
PSP2S_057006123	123	A
PSP2S_057006158	158	A
PSP2S_057006198	198	B
PSP2S_057006248	248	B
PSP2S_057006318	318	B

Standard FCA

## WEAR PLATE SELF-LUBRICATING GLEITPLATTE BRONZE MIT FESTSCHMIERSTOFF PIASTRA GUIDA AUTOLUBRIFICANTE



FORM A



FORM B

## Notes

**Material:** Bronze + Graphite - HB > 190

STOCK



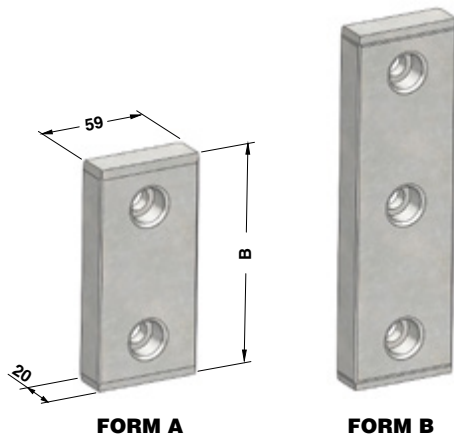
ORDER  
EXAMPLE

FCA CODE

P2S\_060040125

FCA CODE	B	FORM
P2S_060040125	125	A
P2S_060040160	160	A
P2S_060040200	200	B

**WEAR PLATE STEEL  
GLEITPLATTE STAHL  
PIASTRA GUIDA IN ACCIAIO**

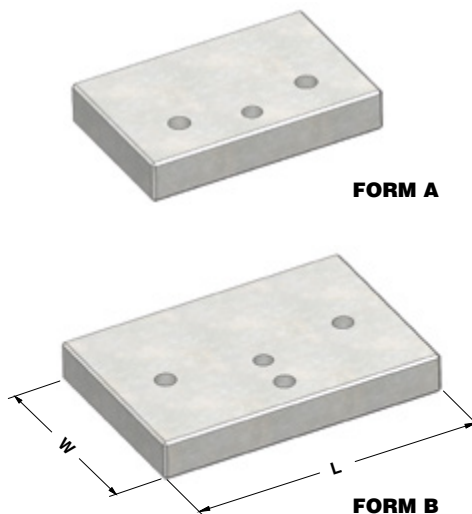


**Notes**  
**Material:** 16MnCr5 - **HRC:** 58÷62



	FCA CODE		
	PA2S_059020160		
	FCA CODE	B	FORM
	PA2S_059020125	125	A
	PA2S_059020160	160	A
	PA2S_059020200	200	B
	PA2S_059020250	250	B
	PA2S_059020320	320	B

**WEAR PLATE STEEL - DECKLEISTE STAHL - PIASTRA GUIDA IN ACCIAIO**



**Notes**  
**Material:** 42CrMo4- **HRC:** 58÷62

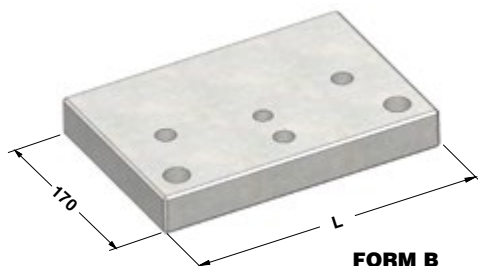


	FCA CODE			
	LA_130200_S			
	FCA CODE	W	L	FORM
	LA_130160_S	130	160	A
	LA_130200_S	130	200	A
	LA_170250_S	170	250	B
	LA_170320_S	170	320	B

## WEAR PLATE STEEL - DECKLEISTE STAHL - PIASTRA GUIDA IN ACCIAIO



FORM A



FORM B

## Notes

**Material:** 42CrMo4 - **HRC:** 58÷62



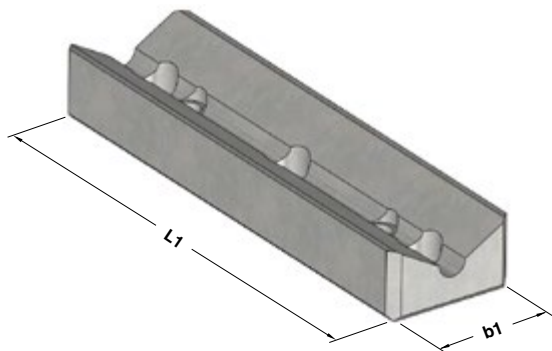
FCA CODE

LA\_170200\_C

FCA CODE	L	FORM
LA_170160_C	160	A
LA_170200_C	200	A
LA_170250_C	250	B
LA_170320_C	320	B

Standard FCA

"V" DRIVER STEEL VDI 3357  
PRISMENFÜHRUNG STAHL VDI 3357  
GUIDA A "V" IN ACCIAIO VDI 3357



## Notes

**Material:** CK45 - **HRC:** 58÷60

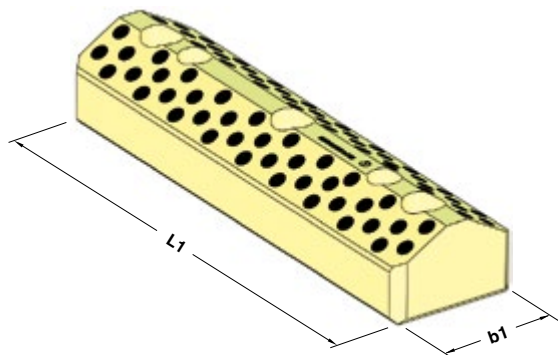


FCA CODE

G\_V\_200065\_F

FCA CODE	b1	L1
G_V_150065_F	65	150
G_V_200065_F	65	200
G_V_250065_F	65	250
G_V_300065_F	65	300
G_V_150125_F	125	150
G_V_200125_F	125	200
G_V_250125_F	125	250
G_V_300125_F	125	300

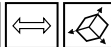
**"V" DRIVER SELF-LUBRICATING VDI 3357**  
**PRISMENFÜHRUNG BRONZE MIT FESTSCHMIERSTOFF VDI 3357**  
**GUIDA A "V" AUTOLUBRIFICANTE VDI 3357**



## Notes

**Material:** Bronze + Graphite - HB > 190

STOCK

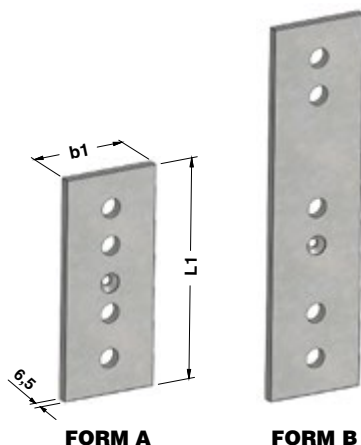


## FCA CODE

G\_V\_200065\_M

FCA CODE	b1	L1
G_V_150065_M	65	150
G_V_200065_M	65	200
G_V_250065_M	65	250
G_V_300065_M	65	300
G_V_150125_M	125	150
G_V_200125_M	125	200
G_V_250125_M	125	250
G_V_300125_M	125	300

**DISTANCE PLATE FOR "V" DRIVER**  
**HÖHENAUSGLEICH FÜR PRISMENFUHRUNG**  
**DISTANZIALE PER GUIDA A "V"**



## Notes

**Material:** Si37

STOCK



## FCA CODE

SP\_V\_06200065

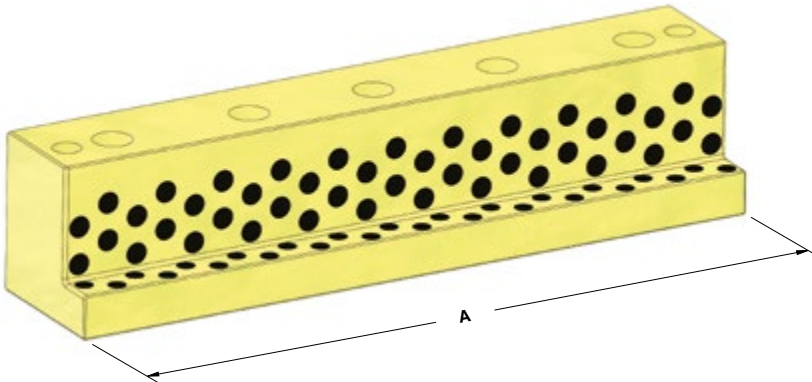
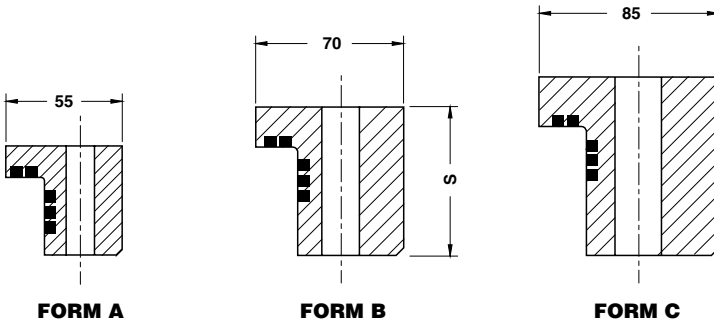
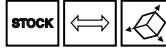
FCA CODE	b1	L1	FORM
SP_V_06150065	63	148	A
SP_V_06200065	63	198	A
SP_V_06250065	63	248	A
SP_V_06300065	63	298	A
SP_V_06150125	123	148	B
SP_V_06200125	123	198	B
SP_V_06250125	123	248	B
SP_V_06300125	123	298	B



ANGULAR GUIDE - WINKELLEISTE - GUIDA ANGOLARE

Notes

Material: Bronze + Graphite - HB > 190



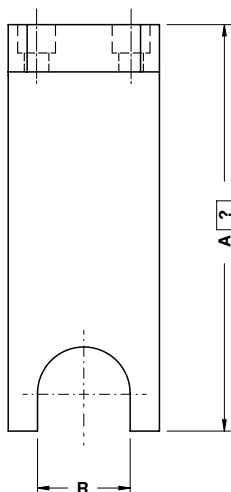
Standard FCA



FCA CODE
G_L_055055160

FCA CODE	A	S	FORM	FCA CODE	A	S	FORM
G_L_055055100	100	55	A	G_L_070075400	400	75	B
G_L_055055160	160	55	A	G_L_085090160	160	90	C
G_L_070075160	160	75	B	G_L_085090200	200	90	C
G_L_070075200	200	75	B	G_L_085090250	250	90	C
G_L_070075250	250	75	B	G_L_085090400	400	90	C

## FORK PAWL - BEFESTIGUNGSPLATTE - FORCELLA NOTTOLINO


 $150 \leq A \leq 220$ 

## Notes

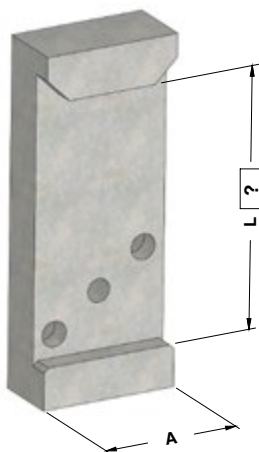
Material: Si37



FCA CODE	A=?
FOR_49	160

FCA CODE	R
FOR_39	39
FOR_49	49

## POSITIVE RETURN PLATE - ZWANGSRÜCKHOLER - GANCIO DI SICUREZZA



## Notes

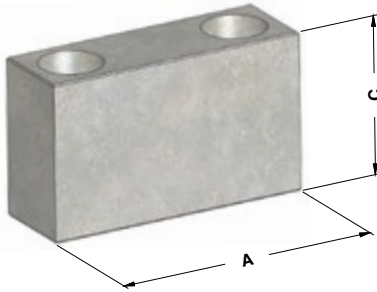
Material: CK45 - HRC: 52÷54



FCA CODE	L=80
GA_60	80

FCA CODE	A
GA_35	35
GA_60	60

## STOP BLOCK - ANSCHLAG - ARRESTO



## Notes

**Material:** CK45

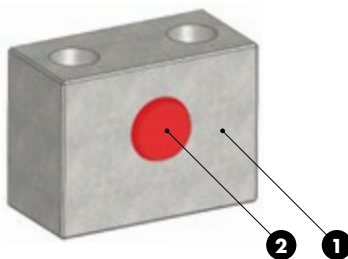
STOCK



FCA CODE		
ARR_752545		
FCA CODE	A	C
ARR_502545	50	45
ARR_502565	50	65
ARR_752545	75	45
ARR_752565	75	65

Standard FCA

## SLIDE STOP BLOCK - SCHIEBERANSCHLAG - ARRESTO SLITTA



## Notes

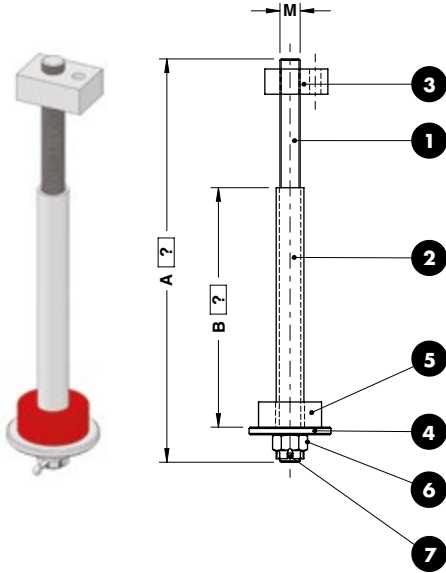
- Material:** CK45
- Material:** Urelast 92SH  
PU\_EL\_24 - 080.90.90

STOCK



FCA CODE		
ARR_AMM_D24		
FCA CODE	A	C
ARR_AMM_D24		

RETAINER BOLT - ZUGBOLZENSATZ - GRUPPO TIRANTE



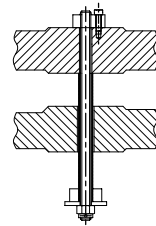
Respect the max. load  
 Maximale Nutzlast beachten  
 Rispettare il carico max.

Notes

- 1 **Material:** 36NiCrMo4
- 2 3 **Material:** St37
- 4 **Material:** CK45
- 5 **Material:** Elastomer 92SH
- 6 **Material:** DIN 935 cl. 8.8
- 7 **Material:** DIN 94



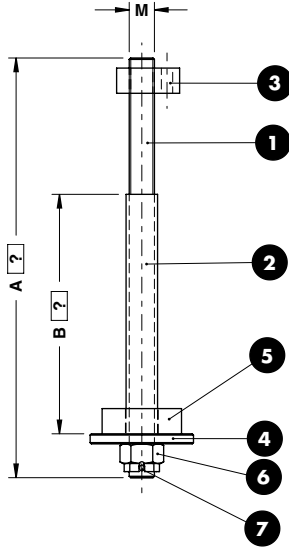
Application example



FCA CODE	A=100	B=60
GRTI_M16	A100	B60

FCA CODE	M	Max load (kg)
GRTI_M16AB	M16	250

RETAINER BOLT - ZUGBOLZENSATZ - GRUPPO TIRANTE



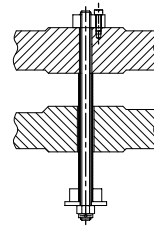
Respect the max. load  
 Maximale Nutzlast beachten  
 Rispettare il carico max.

Notes

- 1 **Material:** 36NiCrMo4
- 2 3 **Material:** St37
- 4 **Material:** CK45
- 5 **Material:** Elastomer 92SH
- 6 **Material:** DIN 935 cl. 8.8
- 7 **Material:** DIN 94



Application example



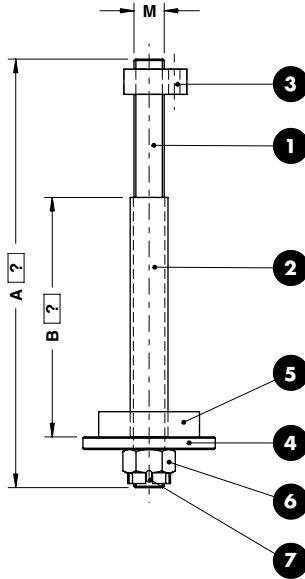
Standard FCA



<b>FCA CODE</b>	<b>A=100</b>	<b>B=60</b>
GRTI_M20	A100	B60

FCA CODE	M	Max load (kg)
GRTI_M20AB	M20	450

RETAINER BOLT - ZUGBOLZENSATZ - GRUPPO TIRANTE



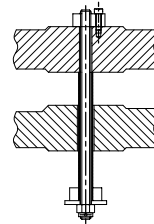
Respect the max. load  
 Maximale Nutzlast beachten  
 Rispettare il carico max.

Notes

- 1 **Material:** 36NiCrMo4
- 2 3 **Material:** St37
- 4 **Material:** CK45
- 5 **Material:** Elastomer 92SH
- 6 **Material:** DIN 935 cl. 8.8
- 7 **Material:** DIN 94



Application example



FCA CODE	A=100	B=60
GRTI_M24	A100	B60

FCA CODE	M	Max load (kg)
GRTI_M24AB	M24	750

RETAINER BOLT - ZUGBOLZENSATZ - GRUPPO TIRANTE



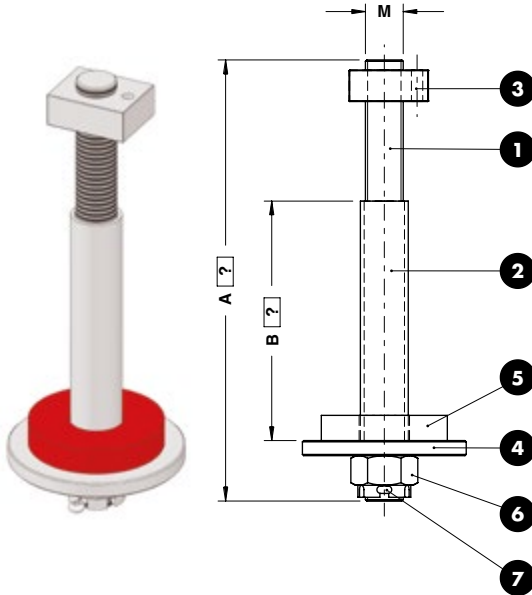
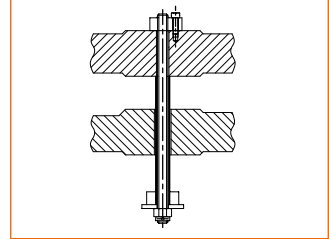
Respect the max. load  
 Maximale Nutzlast beachten  
 Rispettare il carico max.

Notes

- 1 Material: 36NiCrMo4
- 2 3 Material: St37
- 4 Material: CK45
- 5 Elastomer 92SH
- 6 DIN 935 cl. 8.8
- 7 DIN 94



Application example



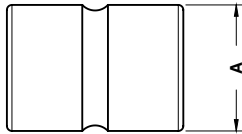
Standard FCA



FCA CODE	A=100	B=60
GRTI_M30	A100	B60

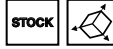
FCA CODE	M	Max load (kg)
GRTI_M30AB	M30	1250

## SHOCK ABSORBER - HALTEELEMENT - AMMORTIZZATORE



## Notes

**Material:** Elastomer 92 SH



FCA CODE

AMM\_06380

FCA CODE

COMMODITY CODE

A

AMM\_05070

19-001-0072

50

AMM\_06380

19-001-0073

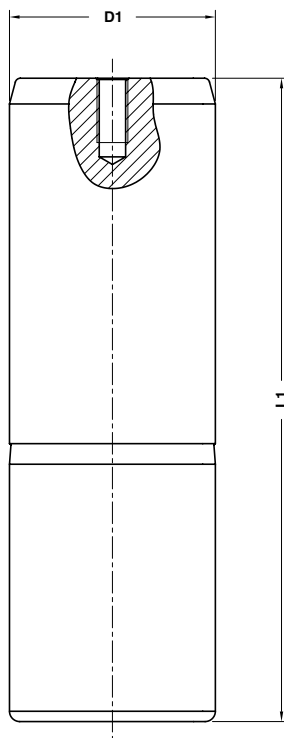
63



## GUIDE POST DIN 9833 - FÜHRUNGSSÄULE DIN 9833 - COLONNA GUIDA DIN 9833

## Notes

Material: 16MnCr5 - HRC 60±62



Standard FCA



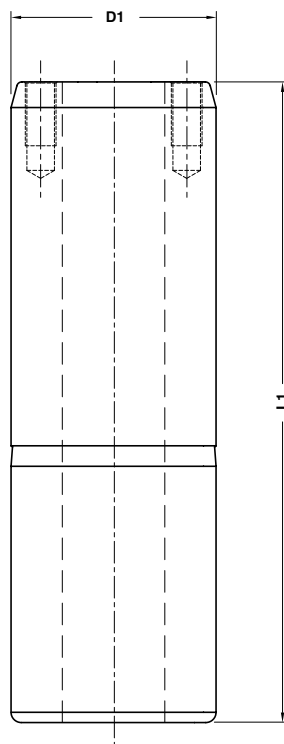
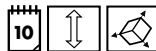
FCA CODE
COL_080315_V

FCA CODE	COMMODITY CODE	D1	L1	FCA CODE	COMMODITY CODE	D1	L1
COL_080250_V	19-245-7210	80	250	COL_100400_V	19-245-7416	100	400
COL_080280_V	19-245-7211	80	280	COL_125355_V	-	125	355
COL_080315_V	19-245-7212	80	315	COL_125400_V	19-245-7816	125	400
COL_080355_V	19-245-7214	80	355	COL_125450_V	19-245-7818	125	450
COL_100315_V	19-245-7412	100	315	COL_125500_V	19-245-7820	125	500
COL_100355_V	19-245-7414	100	355	COL_125550_V	19-245-7822	125	550

## GUIDE POST DIN 9833 - FÜHRUNGSSÄULE DIN 9833 - COLONNA GUIDA DIN 9833

## Notes

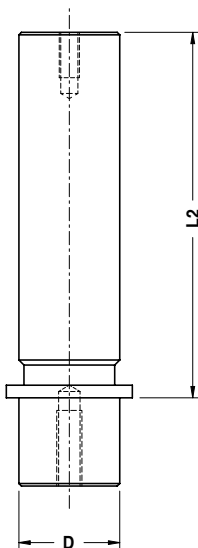
Material: 16MnCr5 - HRC 60÷62



FCA CODE
COLH_080280_V

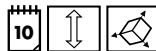
FCA CODE	COMMODITY CODE	D1	L1	FCA CODE	COMMODITY CODE	D1	L1
COLH_080250_V	19-245-0034	80	250	COLH_100400_V	19-245-0027	100	400
COLH_080280_V	19-245-0033	80	280	COLH_125355_V	19-245-0039	125	355
COLH_080315_V	19-245-0032	80	315	COLH_125400_V	19-245-0038	125	400
COLH_080355_V	19-245-0031	80	355	COLH_125450_V	19-245-0037	125	450
COLH_100315_V	19-245-0029	100	315	COLH_125500_V	19-245-0036	125	500
COLH_100355_V	19-245-0028	100	355	COLH_125550_V	19-245-0035	125	550

## GUIDE POST - FÜHRUNGSSÄULE - COLONNA GUIDA



## Notes

**Material:** 16MnCr5 - HRC 60±62



Supplied with retainers and screws.  
Befestigungsklammern und Schrauben im Lieferumfang enthalten.  
Fornite con staffette di fissaggio e viti.



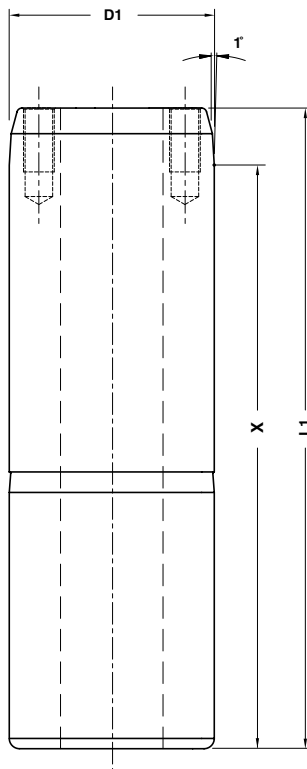
FCA CODE  
COL\_SL\_25110


FCA CODE	COMMODITY CODE	D	L2	FCA CODE	COMMODITY CODE	D	L2
COL_SL_25100	19-250-0053	25	100	COL_SL_40180	19-250-0077	40	180
COL_SL_25110	19-250-0054	25	110	COL_SL_40200	19-250-0076	40	200
COL_SL_25120	19-250-0055	25	120	COL_SL_40220	19-250-0075	40	220
COL_SL_25130	19-250-0056	25	130	COL_SL_40240	19-250-0074	40	240
COL_SL_25140	19-250-0057	25	140	COL_SL_50110	19-250-0073	50	110
COL_SL_25160	19-250-0058	25	160	COL_SL_50120	19-250-0072	50	120
COL_SL_25170	19-250-0059	25	170	COL_SL_50130	19-250-0071	50	130
COL_SL_25180	19-250-0060	25	180	COL_SL_50140	19-250-0070	50	140
COL_SL_25200	19-250-0061	25	200	COL_SL_50160	19-250-0069	50	160
COL_SL_32100	19-250-0062	32	100	COL_SL_50170	19-250-0068	50	170
COL_SL_32110	19-250-0063	32	110	COL_SL_50180	19-250-0092	50	180
COL_SL_32120	19-250-0064	32	120	COL_SL_50200	19-250-0091	50	200
COL_SL_32130	19-250-0065	32	130	COL_SL_50220	19-250-0090	50	220
COL_SL_32140	19-250-0066	32	140	COL_SL_50240	19-250-0089	50	240
COL_SL_32160	19-250-0067	32	160	COL_SL_63130	19-250-0100	63	130
COL_SL_32170	19-250-0004	32	170	COL_SL_63140	19-250-0088	63	140
COL_SL_32180	19-250-0080	32	180	COL_SL_63160	19-250-0099	63	160
COL_SL_32200	19-250-0081	32	200	COL_SL_63170	19-250-0098	63	170
COL_SL_32220	19-250-0082	32	220	COL_SL_63180	19-250-0097	63	180
COL_SL_32240	19-250-0083	32	240	COL_SL_63200	19-250-0096	63	200
COL_SL_40110	19-250-0084	40	110	COL_SL_63220	19-250-0095	63	220
COL_SL_40120	19-250-0085	40	120	COL_SL_63240	19-250-0101	63	240
COL_SL_40130	19-250-0086	40	130	COL_SL_80200	19-250-0094	80	200
COL_SL_40140	19-250-0079	40	140	COL_SL_80220	19-250-0093	80	220
COL_SL_40160	19-250-0087	40	160	COL_SL_80240	19-250-0102	80	240
COL_SL_40170	19-250-0078	40	170				

GUIDE POST - FÜHRUNGSSÄULE - COLONNA GUIDA

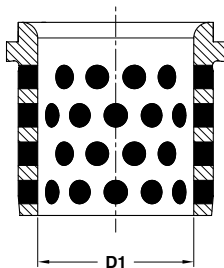
Notes

Material: 16MnCr5 - HRC 60÷62



	FCA CODE		
	COLH100355_T		
FCA CODE	D1	L1	X
COLH100315_T	100	315	250
COLH100355_T	100	355	290

**BUSH SELF-LUBRICATING DIN 9834**  
**FÜHRUNGSBUCHSE DIN 9834**  
**BOCCOLA AUTOLUBRIFICANTE DIN 9834**



## Notes

**Material:** Bronze + Graphite  
**HB > 190**

STOCK

ORDER  
EXAMPLE

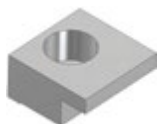
FCA CODE

BOC\_032050\_V

FCA CODE	COMMODITY CODE	D1
BOC_025040_V	19-029-0023	25
BOC_032050_V	19-029-0024	32
BOC_040063_V	19-029-0025	40
BOC_050071_V	19-029-0026	50
BOC_063080_V	19-029-0029	63
BOC_080100_V	19-029-0027	80
BOC_100125_V	19-029-0028	100
BOC_125160_V	19-029-0030	125

Standard FCA

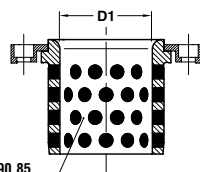
**TOE CLAMP - HALTESTÜCK - RITEGNO PER BOCCOLA**



## Notes

**Material:** CK45

## Application example



065.090.85

STOCK

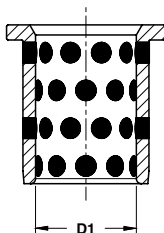
ORDER  
EXAMPLE

FCA CODE

RIT\_323216

FCA CODE	COMMODITY CODE	D1
RIT_202010	19-010-0106	25-50
RIT_323216	19-010-0105	63-160

## BUSH SELF LUBRICATING - FÜHRUNGSBUCHSE - BOCCOLA AUTOLUBRIFICANTE



## Notes

**Material:** Bronze + Graphite  
HB >190

STOCK



FCA CODE  
BO\_PR\_50

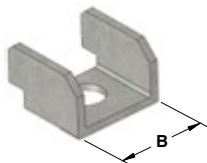
FCA CODE	COMMODITY CODE	D1
BO_PR_40	19-029-0104	40
BO_PR_50	19-029-0105	50
BO_PR_63	19-029-0106	63
BO_PR_80	19-029-0108	80

## TOE CLAMP - HALTESTÜCK - RITEGNO PER BOCCOLA

## Notes

**Material:** CK45

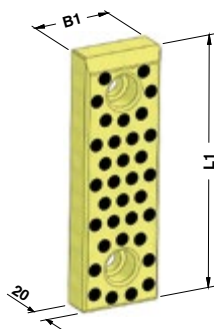
STOCK



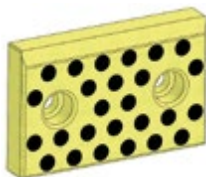
FCA CODE  
RIT\_152327

FCA CODE	COMMODITY CODE	B
RIT_152327	19-029-0101	23,5

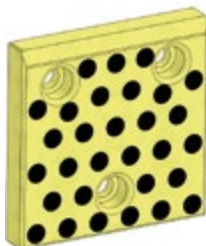
**WEAR PLATE SELF-LUBRICATING VDI 3357**  
**GLEITPLATTE BRONZE MIT FESTSCHMIERSTOFF VDI 3357**  
**PIASTRA GUIDA AUTOLUBRIFICANTE VDI 3357**



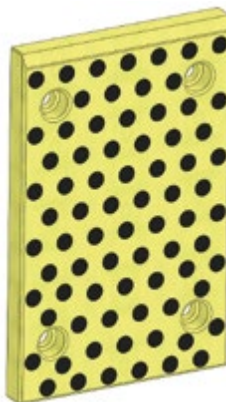
**FORM A**



**FORM B**

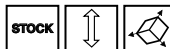


**FORM C**



**FORM D**

**Notes**  
**Material:** Bronze + Graphite - **HB > 190**



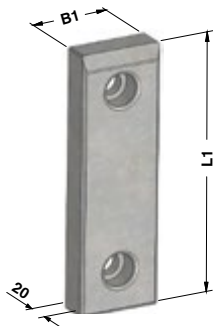
Standard FCA



<b>FCA CODE</b>
PBR_05020100

FCA CODE	COMMODITY CODE	B1	L1	FORM	FCA CODE	COMMODITY CODE	B1	L1	FORM
PBR_05020080	19-290-0069	50	80	A	PBR_10020315	-	100	315	A
PBR_05020100	19-290-3204	50	100	A	PBR_12520050	19-290-0071	125	50	B
PBR_05020125	19-290-3205	50	125	A	PBR_12520080	19-290-3503	125	80	B
PBR_05020160	19-290-3206	50	160	A	PBR_12520100	19-290-3504	125	100	C
PBR_05020200	19-290-3208	50	200	A	PBR_12520125	19-290-3505	125	125	C
PBR_08020050	19-290-0067	80	50	B	PBR_12520160	19-290-3506	125	160	C
PBR_08020080	19-290-0066	80	80	A	PBR_12520200	19-290-3508	125	200	C
PBR_08020100	19-290-3304	80	100	A	PBR_12520250	-	125	250	C
PBR_08020125	19-290-3305	80	125	A	PBR_12520315	-	125	315	C
PBR_08020160	19-290-3306	80	160	A	PBR_16020050	19-290-0075	160	50	C
PBR_08020200	19-290-3308	80	200	A	PBR_16020080	19-290-0073	160	80	C
PBR_10020050	19-290-3402	100	50	B	PBR_16020100	19-290-3604	160	100	C
PBR_10020080	19-290-3403	100	80	B	PBR_16020125	19-290-3605	160	125	C
PBR_10020100	19-290-3404	100	100	A	PBR_16020160	19-290-3606	160	160	C
PBR_10020125	19-290-3405	100	125	A	PBR_16020200	19-290-3608	160	200	C
PBR_10020160	19-290-3406	100	160	A	PBR_16020250	-	160	250	D
PBR_10020200	19-290-3408	100	200	A	PBR_16020315	-	160	315	D
PBR_10020250	-	100	250	A					

**WEAR PLATE STEEL VDI 3357**  
**GLEITPLATTE STAHL VDI 3357**  
**PIASTRA GUIDA IN ACCIAIO VDI 3357**



**FORM A**



**FORM B**



**FORM C**



**FORM D**

**Notes**

**Material:** 16MnCr5 - **HRC:** 58÷62

STOCK



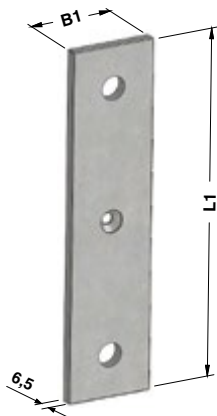
FCA CODE

PAC\_05020100

FCA CODE	COMMODITY CODE	B1	L1	FORM	FCA CODE	COMMODITY CODE	B1	L1	FORM
PAC_05020080	19-290-0070	50	80	A	PAC_10020315	-	100	315	A
PAC_05020100	19-290-4204	50	100	A	PAC_12520050	19-290-0072	125	50	B
PAC_05020125	19-290-4205	50	125	A	PAC_12520080	19-290-4503	125	80	B
PAC_05020160	19-290-4206	50	160	A	PAC_12520100	19-290-4504	125	100	C
PAC_05020200	19-290-4208	50	200	A	PAC_12520125	19-290-4505	125	125	C
PAC_08020050	19-290-0068	80	50	B	PAC_12520160	19-290-4506	125	160	C
PAC_08020080	19-290-0065	80	80	A	PAC_12520200	19-290-4508	125	200	C
PAC_08020100	19-290-4304	80	100	A	PAC_12520250	-	125	250	C
PAC_08020125	19-290-4305	80	125	A	PAC_12520315	-	125	315	C
PAC_08020160	19-290-4306	80	160	A	PAC_16020050	19-290-0076	160	50	C
PAC_08020200	19-290-4308	80	200	A	PAC_16020080	19-290-0074	160	80	C
PAC_10020050	19-290-4402	100	50	B	PAC_16020100	19-290-4604	160	100	C
PAC_10020080	19-290-4403	100	80	B	PAC_16020125	19-290-4605	160	125	C
PAC_10020100	19-290-4404	100	100	A	PAC_16020160	19-290-4606	160	160	C
PAC_10020125	19-290-4405	100	125	A	PAC_16020200	19-290-4608	160	200	C
PAC_10020160	19-290-4406	100	160	A	PAC_16020250	-	160	250	D
PAC_10020200	19-290-4408	100	200	A	PAC_16020315	-	160	315	D
PAC_10020250	-	100	250	A					



**DISTANCE PLATE FOR WEAR PLATE  
HÖHENAUSGLEICH FÜR GLEITPLATTE  
Distanziale per piastra**



**FORM A**



**FORM B**



**FORM C**



**FORM D**

**Notes**  
**Material:** S37



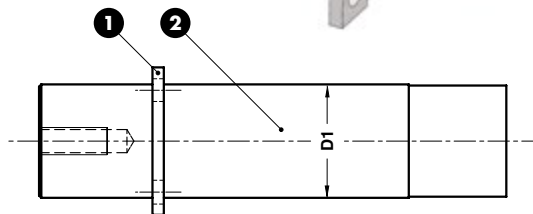
Standard FCA



<b>FCA CODE</b>
PSP_08006050

FCA CODE	B1	L1	FORM	FCA CODE	B1	L1	FORM	FCA CODE	B1	L1	FORM
PSP_05006200	48	198	A	PSP_10006160	98	158	A	PSP_12506315	123	313	C
PSP_08006050	78	48	B	PSP_10006200	98	198	A	PSP_16006050	158	48	B
PSP_08006080	78	78	A	PSP_10006250	98	248	A	PSP_16006100	158	98	C
PSP_08006100	78	98	A	PSP_10006315	98	313	A	PSP_16006125	158	123	C
PSP_08006125	78	123	A	PSP_12506050	123	48	B	PSP_16006160	158	158	C
PSP_08006160	78	158	A	PSP_12506100	123	98	C	PSP_16006200	158	198	C
PSP_08006200	78	198	A	PSP_12506125	123	123	C	PSP_16006250	158	248	D
PSP_10006050	98	48	B	PSP_12506160	123	158	C	PSP_16006315	158	313	D
PSP_10006100	98	98	A	PSP_12506200	123	198	C				
PSP_10006125	98	123	A	PSP_12506250	123	248	C				

## PAD RETAINER PIN - STECKBOLZEN - PERNO DI ARRESTO



## Notes

- 1 **Material:** St37
- 2 **Material:** 36CrNiMo4

Screws not included



FCA CODE

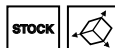
PRN\_050206

FCA CODE	COMMODITY CODE	D1
PRN_040172	19-010-0098	40
PRN_050206	19-010-0097	50

## LOCATING PIN - ZENTRIERBOLZEN - CENTRAGGIO



## Notes

**Material:** 16MnCr5 - **HRC:** 58÷60

FCA CODE

PDC\_04055

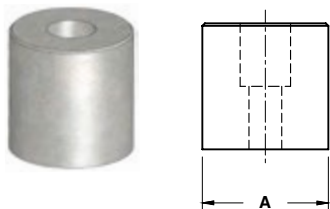
FCA CODE	COMMODITY CODE
PDC_04055	19-010-0104

## BALANCE BLOCK - DISTANZSTÜCK - DISTANZIALE

## Notes

**Material:** CK45

STOCK



FCA CODE

DST\_090050

FCA CODE

COMMODITY CODE

A

DST\_050050

19-010-0102

50

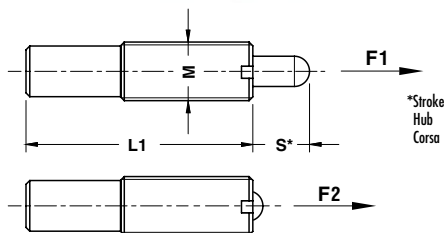
DST\_090050

19-010-0103

90

Standard FCA

## SPRING PLUNGER - FEDERNE DRUCKSTÜCKE - ESPULSORE A MOLLA



## Notes

**Material:** Steel

STOCK



Spring plungers can be fitted/removed by means of the slot or internal hexagon.

Montage/demontage mit Innensechskant und Schlitz möglich.

Il montaggio/smontaggio avviene sia tramite l'esagono incassato, che tramite l'intaglio frontale.

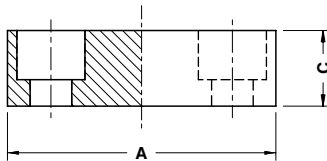


FCA CODE

ESP\_H\_M1615

FCA CODE	COMMODITY CODE	M	L1	S	F1 (N/mm <sup>2</sup> )	F2 (N/mm <sup>2</sup> )
ESP_H_M1210	42-497-0104	M12	45	10	7	40
ESP_H_M1615	42-497-0220	M16	60	15	15	80
ESP_H_M1630	42-497-0093	M16	125	30	20	80

## PRESSURE PLATE - DRUCKPLATTE - PIASTRA DI REAZIONE



## Notes

**Material:** 90MnCrV8 - **HRC:** 50÷52

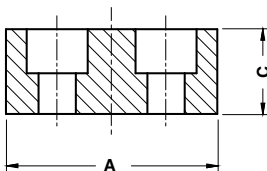


## FCA CODE

RE\_565620\_Q

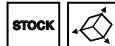
FCA CODE	COMMODITY CODE	A	C
RE_404015_Q	19-010-0151	40	15
RE_565620_Q	19-010-0154	56	20
RE_717120_Q	19-010-0153	71	20
RE_909020_Q	19-010-0152	90	20
RE_14014020_Q	19-010-0150	140	20

## PRESSURE PLATE - DRUCKPLATTE - PIASTRA DI REAZIONE



## Notes

**Material:** 90MnCrV8 - **HRC:** 50÷52

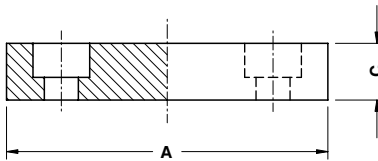


## FCA CODE

RE\_70SP20\_C

FCA CODE	COMMODITY CODE	A	C
RE_50SP15_C	19-010-0155	40	15
RE_70SP20_C	19-010-0149	56	20
RE_94SP20_C	19-010-0148	71	20

## PRESSURE PLATE - DRUCKPLATTE - PIASTRA DI REAZIONE



## Notes

**Material:** 90MnCrV8 - **HRC:** 50÷52



FCA CODE

RE\_553012\_R

FCA CODE	A	B	C
RE_502512_R	50	25	12
RE_553012_R	55	30	12
RE_703515_R	70	35	15
RE_755015_R	75	50	15
RE_856015_R	85	60	15
RE_1008020_R	100	80	20
RE_11010020_R	110	100	20

Standard FCA

## REAR GUIDE - HINTERE FÜHRUNG - GUIDA POSTERIORE



## Notes

**Material:** 16MnCr5 - HRC: 58+60



FCA CODE

GU\_030170190

FCA CODE

GU\_030170190

## ANGULAR GUIDE - WINKELLEISTE - GUIDA ANGOLARE



## Notes

**Material:** Bronze + Graphite - HB > 190



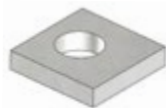
FCA CODE

A919/SPF-180

FCA CODE

A919/SPF-180

## TOE CLAMP - HALTESTÜCK - RITEGNO



## Notes

**Material:** Si37



FCA CODE

RIT\_015015003

FCA CODE

RIT\_015015003

## PIN - STECKBOLZEN - PERNO



## Notes

**Material:** 16MnCr5 - **HRC:** 58+60

STOCK



FCA CODE

PE\_015066

FCA CODE

PE\_015066

## WEAR PLATE - GLEITPLATTE - PIASTRA GUIDA



## Notes

**Material:** Bronze + Graphite - **HB** > 190

STOCK



FCA CODE

E40.04.02805180

FCA CODE

E40.04.02805180

## PAWL - KLINKE - NOTTOLINO



## Notes

**Material:** CK45

STOCK



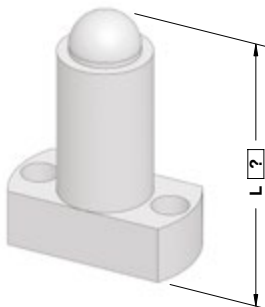
FCA CODE

NOT\_040040

FCA CODE

NOT\_040040

## HOOKUP - HINWEIS - RIMANDO



## Notes

**Material:** 16MnCr5 - HRC: 58+60



ORDER EXAMPLE 	FCA CODE	L=150
	RIM_080	150

## FCA CODE

RIM\_080

## SHIM - ABSTIMMSCHEIBE - SPESSORE



## Notes

**Material:** Fe320



ORDER EXAMPLE 	FCA CODE
	SP080-05

## FCA CODE

SP080-05

## CLAMP - BEFESTIGUNGSELEMENT - MORSETTO



## Notes

**Material:** CK45



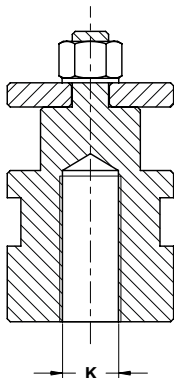
ORDER EXAMPLE 	FCA CODE
	MOR_025080100

## FCA CODE

MOR\_025080100



## UNION NUT - BEFESTIGUNGSELEMEN - DADO DI UNIONE



## Notes

**Material:** CK45

STOCK



FCA CODE

DU\_M20\_2B

FCA CODE

K

DU\_M16\_2A

M16x1,5

DU\_M20\_2B

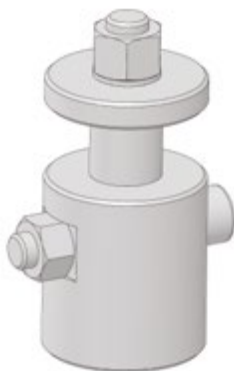
M20x1,5

DU\_M27\_2C

M27x2

Standard FCA

## UNION NUT - BEFESTIGUNGSELEMEN - DADO DI UNIONE



## Notes

**Material:** CK45

STOCK



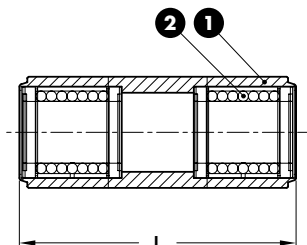
FCA CODE

DU\_025045

FCA CODE

DU\_025045

## SLEEVE - FÜHRUNGSEINHEIT - CANOTTO GUIDA



## Notes

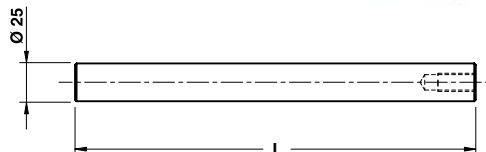
- 1 **Material:** CK45
- 2 **Material:** STAR 0658-225-40



FCA CODE	
BOC_025200_4B	

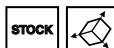
FCA CODE	L
BOC_025112_4A	230
BOC_025200_4B	315

## GUIDE POST - FÜHRUNGSSAULE - COLONNA PER TRALICCIO



## Notes

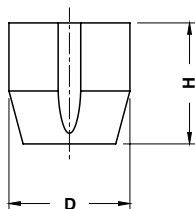
**Material:** CK45 - HRC: 56÷58



FCA CODE	
COL_025315_3B	

FCA CODE	L
COL_025230_3A	230
COL_025315_3B	315
COL_025365_3C	365
COL_025415_3D	415
COL_025465_3E	465

## ELASTOMER CAP - ELASTOMERDRUCKSTÜK - PUNTALINO ELASTICO



## Notes

**Material:** Urelast 92 SH

STOCK



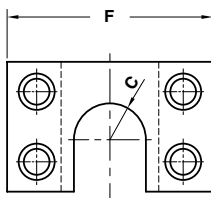
FCA CODE

PU\_EL\_10

FCA CODE	D	H	F max (N)	FCA CODE	D	F	F max (N)
PU_EL_06	6	9,5	100	PU_EL_30	30	35	3000
PU_EL_10	10	15,5	450	PU_EL_32	32	32	12000
PU_EL_16	16	25	1500	PU_EL_39,5	39,5	40	25000
PU_EL_24	24	25	3000				

Standard FCA

## COUPLING PLATE - BEFESTIGUNGPLATTE - STAFFA DI REAZIONE



## Notes

**Material:** CK45

STOCK

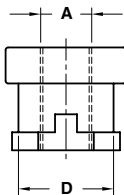


FCA CODE

FO\_NO\_4740

FCA CODE	COMMODITY CODE	F	C
FO_NO_3530	19-010-2360	80	14
FO_NO_4740	19-010-2365	100	20
FO_NO_5750	19-010-2370	120	25
N/A	19-010-2375	150	33

## COUPLING NUT - KUPPLUNGSMUTTER - AGGANCIO STAFFA



## Notes

Material: CK45

STOCK

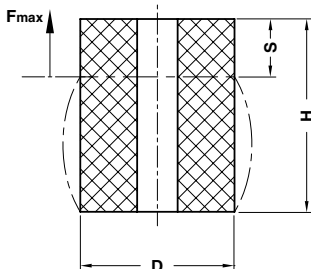


FCA CODE

NO\_3530M12

FCA CODE	COMMODITY CODE	D	A
NO_3530M10	39-295-0032	25	M10x1,25
NO_3530M12	39-295-0031	25	M12x1,25
NO_4740M16	39-295-0029	37	M16x1,5
NO_4740M20	39-811-0667	37	M20x1,5
NO_5750M27	39-811-0416	47	M27x2
NO_5750M36	39-811-0455	47	M36x2
N/A	39-295-0033	59	M42x2

ELASTOMER SPRING - ELASTOMERFEDER - MOLLA IN ELASTOMERO



Notes

Material: Elastomer 92SH



S = max. 30% H

STOCK



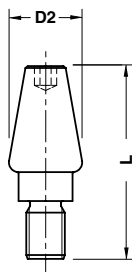
FCA CODE

MOL\_080080

FCA CODE	D	H	S	Fmax (N)	FCA CODE	D	H	S	Fmax (N)	FCA CODE	D	H	S	Fmax (N)
MOL_063100	63	100	30	2600	MOL_100080	100	80	24	5900	MOL_125125	125	125	37.5	9900
MOL_080080	80	80	24	4300	MOL_100100	100	100	30	5900	MOL_125160	125	160	48	9900
MOL_080100	80	100	30	4300	MOL_100125	100	125	37.5	5900					
MOL_080125	80	125	37.5	4300	MOL_125100	125	100	30	9900					

Standard FCA

ELASTOMER SPRING PIN - AUFNAHMEBOLZEN - PERNO PER MOLLE IN ELASTOMERO



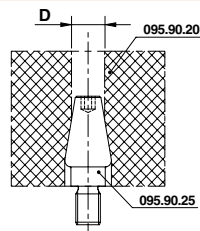
STOCK



Notes

Material: CK45

Application example



FCA CODE

PRN\_MO\_M16

FCA CODE	D	D2	L
PRN_MO_M12	63÷80	28	56
PRN_MO_M16	100	32	74
PRN_MO_M20	125	38	100

## LIFTING PIN - TRAGBOLZEN MIT FALLRINGSICHERUNG - PERNO DI SOLLEVAMENTO



Respect the max load  
Maximale Nutzlast beachten  
Rispettare il carico Max

**WARNING - ACHTUNG - ATTENZIONE:**

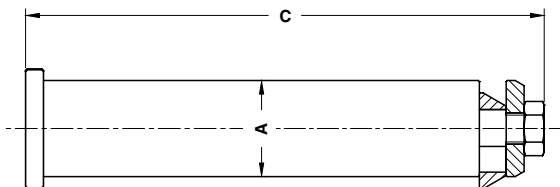
For safety reason, please consider always that the weight of the die has to be supported by just 2 lifting pins.

Aus Sicherheitsgründen stets berücksichtigen, dass zwei Tragbolzen das gesamte Werkzeuggewicht tragen müssen.

Per ragioni di sicurezza, considerare sempre che il peso dello stampo deve essere sopportato da 2 soli perni.

**Notes**

**Material:** CK45



FCA CODE

SOL\_KG3200

FCA CODE	COMMODITY CODE	Max load (kg)	Max die weight (kg)	C	A
SOL_KG2000	19-255-XXXX	2000	4000	178,5	29
SOL_KG3200	19-255-XXXX	3200	6400	200,5	33

## LIFTING PIN - TRAGBOLZEN MIT FALLRINGSICHERUNG - PERNO DI SOLLEVAMENTO



Respect the max load  
Maximale Nutzlast beachten  
Rispettare il carico Max

**WARNING - ACHTUNG - ATTENZIONE:**

For safety reason, please consider always that the weight of the die has to be supported by just 2 lifting pins.

Aus Sicherheitsgründen stets berücksichtigen, dass zwei Tragbolzen das gesamte Werkzeuggewicht tragen müssen.

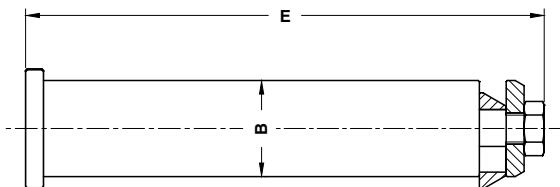
Per ragioni di sicurezza, considerare sempre che il peso dello stampo deve essere sopportato da 2 soli perni.

**Notes**

**Material:** CK45



Standard FCA

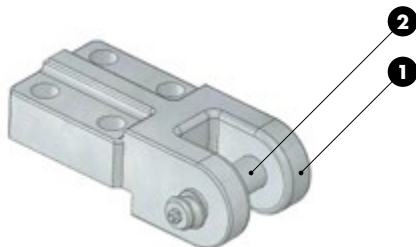


FCA CODE

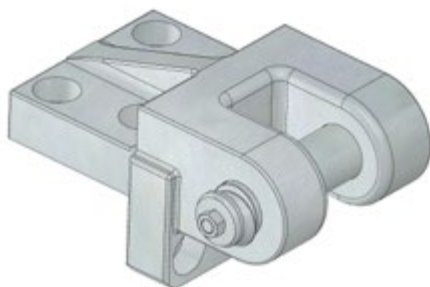
SOL\_KG13000\_T

FCA CODE	Max load (kg)	Max die weight (kg)	E	B
SOL_KG8000_T	8000	16000	227	53
SOL_KG13000_T	13000	26000	272,5	63

**LIFTING BRACKET WITH LIFTING BOLT**  
**TRAGWANGE MIT TRAGBOLZEN MIT FALLRINGSICHERUNG**  
**STAFFA DI SOLLEVAMENTO COMPLETA DI PERNO**



FORM A



FORM B



Respect the max. load  
 Maximale Nutzlast beachten  
 Rispettare il carico max.

**WARNING - ACHTUNG - ATTENZIONE:**

For safety reason, please consider always that the weight of the die has to be supported by just 2 lifting brackets.

Aus Sicherheitsgründen stets berücksichtigen, dass zwei Tragwangen das gesamte Werkzeuggewicht tragen müssen.

Per ragioni di sicurezza, considerare sempre che il peso dello stampo deve essere sopportato da 2 sole staffe.

**Notes**

**1** Material: CK45 - 800÷1000 N/mm<sup>2</sup>

**2** Material: CK45

Screws not included



FCA CODE  
 GR\_ST\_KG1000

FCA CODE	Max load (kg)	Max die weight (kg)	FORM	LIFTING BRACKET	LIFTING BOLT
GR_ST_KG600	600	1200	A	ST_KG600_S	ST_KG600_P
GR_ST_KG1000	1000	2000	A	ST_KG1000_S	ST_KG1000_P
GR_ST_KG2000	2000	4000	A	ST_KG2000_S	ST_KG2000_P
GR_ST_KG4000	4000	8000	B	ST_KG4000_S	ST_KG4000_P
GR_ST_KG7000	7000	14000	B	ST_KG7000_S	ST_KG7000_P



**REPLACEMENT LIFTING PIN FOR LIFTING BRACKET**  
**ERSATZTRAGBOLZEN FÜR TRAGWANGE**  
**PERNO DI RICAMBIO PER STAFFA DI SOLLEVAMENTO**



Respect the max load  
 Maximale Nutzlast beachten  
 Rispettare il carico Max

**WARNING - ACHTUNG - ATTENZIONE:**

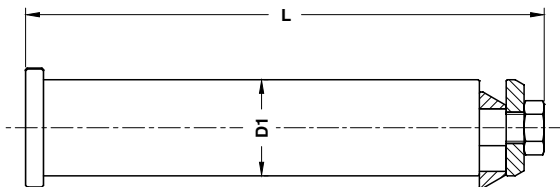
For safety reason, please consider always that the weight of the die has to be supported by just 2 lifting pins.

Aus Sicherheitsgründen stets berücksichtigen, dass zwei Tragbolzen das gesamte Werkzeuggewicht tragen müssen.

Per ragioni di sicurezza, considerare sempre che il peso dello stampo deve essere sopportato da 2 soli perni.

**Notes**

**Material:** CK45



FCA CODE

ST\_KG1000\_P

FCA CODE	Max load (kg)	Max die weight (kg)	L	D1
ST_KG600_P	600	1200	102,5	15,6
ST_KG1000_P	1000	2000	113,5	20,6
ST_KG2000_P	2000	4000	128,5	25,6
ST_KG4000_P	4000	8000	166,5	33
ST_KG7000_P	7000	14000	210,5	43

**WEAR PLATE SELF-LUBRICATING  
GLEITPLATTE BRONZE MIT FESTSCHMIERSTOFF  
PIASTRA GUIDA AUTOLUBRIFICANTE**

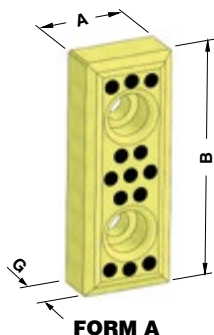
**Notes**

**Material:** Bronze + Graphite -

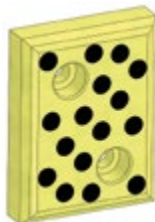
Only for replacement

Nur für Reparatur

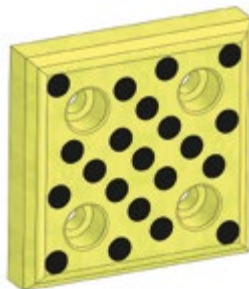
Solo per riparazione



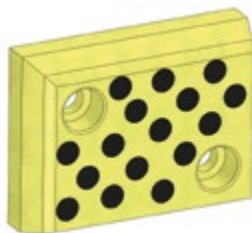
**FORM A**



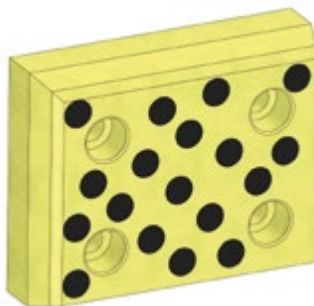
**FORM B**



**FORM C**



**FORM D**



**FORM E**



FCA CODE

BR2

FCA CODE	A	B	G	FORM	FCA CODE	A	B	G	FORM
BR1	38	100	20	A	BR6	100	150	20	C
BR2	38	150	20	A	BR10	100	75	18	D
BR3	75	100	20	B	BR11	125	100	25	E
BR4	75	150	20	A	BR12	150	125	25	E
BR5	100	100	20	C					

**WEAR PLATE STEEL  
GLEITPLATTE STAHL  
PIASTRA GUIDA IN ACCIAIO**

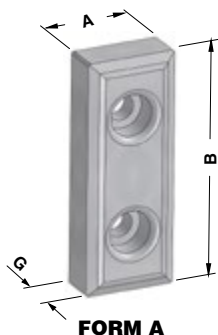
**Notes**

**Material:** 16MnCr5 - **HRC:** 58±60

Only for replacement

Nur für Reparatur

Solo per riparazione



Standard FCA



**FCA CODE**

**ACC2**

FCA CODE	A	B	G	FORM	FCA CODE	A	B	G	FORM
ACC1	38	100	20	A	ACC6	100	150	20	C
ACC2	38	150	20	A	ACC10	100	75	18	D
ACC3	75	100	20	B	ACC11	125	100	25	E
ACC4	75	150	20	A	ACC12	150	125	25	E
ACC5	100	100	20	C					

**DISTANCE PLATE FOR WEAR PLATE  
HÖHENAUSGLEICH FÜR GLEITPLATTE  
DISTANZIALE PER PIASTRA GUIDA**

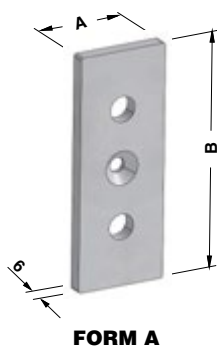
**Notes**

**Material:** Si37

Only for replacement

Nur für Reparatur

Solo per riparazione



**FORM A**



**FORM B**



**FORM C**



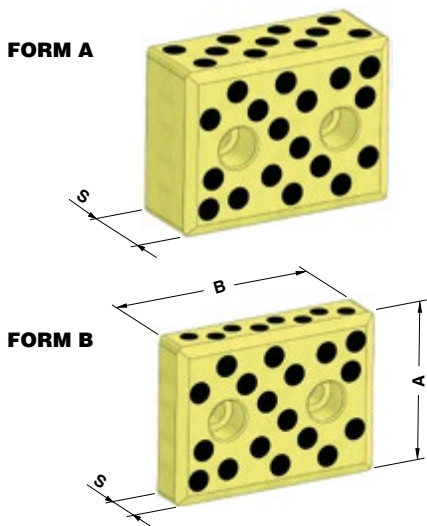
**FCA CODE**

**TIPO 2-S-B**

FCA CODE	A	B	FORM
TIPO 1-S-B	38	100	A
TIPO 2-S-B	38	150	A
TIPO 3-S-B	75	100	B
TIPO 4-S-B	75	150	A
TIPO 5-S-B	100	100	C

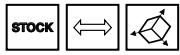
FCA CODE	A	B	FORM
TIPO 6-S-B	100	150	C
TIPO 10-S-B	100	75	B
TIPO 11-S-B	125	100	C
TIPO 12-S-B	150	125	C

**GUIDE BAR SELF-LUBRICATING**  
**FÜHRUNGSLEITE BRONZE MIT FESTSCHMIERSTOFF**  
**LARDONE AUTOLUBRIFICANTE**



**Notes**

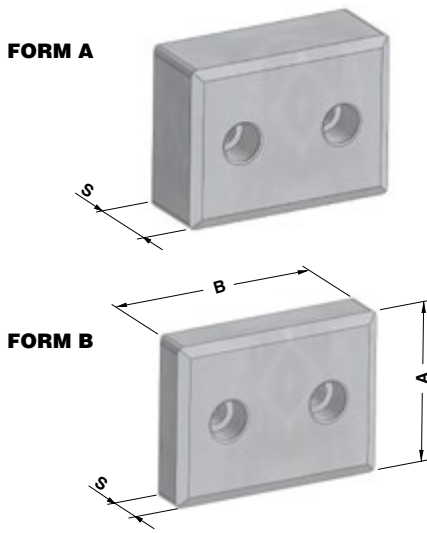
**Material:** Bronze + Graphite -  
 Only for replacement  
 Nur für Reparatur  
 Solo per riparazione



	FCA CODE			
	BR31			
FCA CODE	A	B	S	FORM
BR30	48	100	20	B
BR31	48	150	20	B
BR32	75	100	20	B
BR33	75	150	20	B
BR7	75	100	38	A
BR8	75	150	38	A

Standard FCA

**GUIDE BAR STEEL**  
**FÜHRUNGSLEITE STAHL**  
**LARDONE IN ACCIAIO**



**Notes**

**Material:** 16MnCr5 - HRC: 58÷60  
 Only for replacement  
 Nur für Reparatur  
 Solo per riparazione



	FCA CODE			
	ACC31			
FCA CODE	A	B	S	FORM
ACC30	48	100	20	B
ACC31	48	150	20	B
ACC32	75	100	20	B
ACC33	75	150	20	B
ACC7	75	100	38	A
ACC8	75	150	38	A

**ANGULAR GUIDE - WINKELLEISTE - GUIDA ANGOLARE**

**Notes**

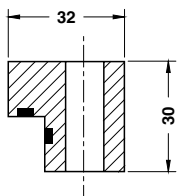
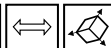
**Material:** Bronze + Graphite -

Only for replacement

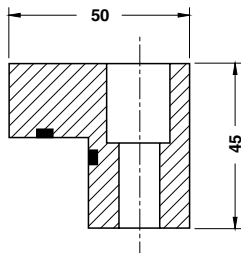
Nur für Reparatur

Solo per riparazione

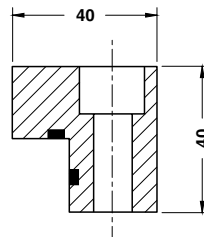
**STOCK**



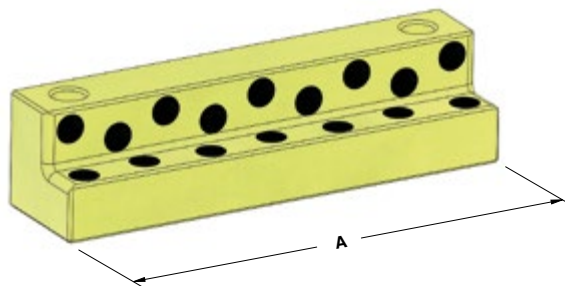
**FORM A**



**FORM B**



**FORM C**

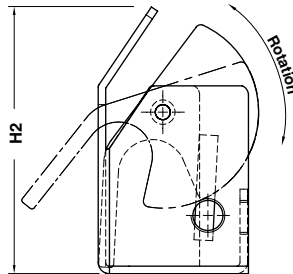


**FCA CODE**

**BR 16**

FCA CODE	A	FORM	FCA CODE	A	FORM
BR 15	100	A	BR 19	300	B
BR 16	150	A	BR 27	160	C
BR 17	200	B	BR 28	250	C
BR 18	250	B			

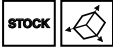
FRONT GAGE - EINLAUFANSCHLAG - PORTASENSORE



**Notes**

**Material:** St37

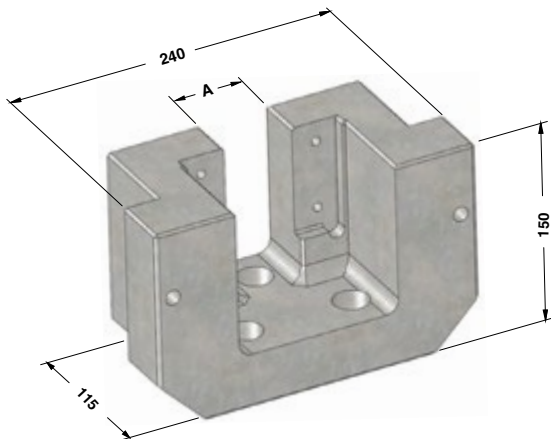
Only for replacement  
Nur für Reparatur  
Solo per riparazione



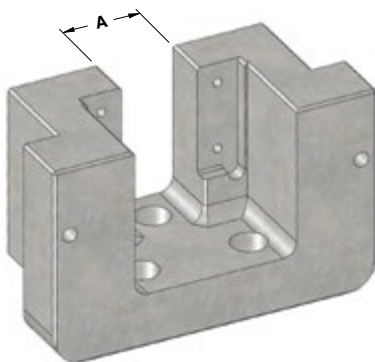
	FCA CODE								
	RIF_M18L150								
<table border="1"> <thead> <tr> <th>FCA CODE</th> <th>H2</th> </tr> </thead> <tbody> <tr> <td>RIF_M18L120</td> <td>117</td> </tr> <tr> <td>RIF_M18L150</td> <td>142</td> </tr> <tr> <td>RIF_M18L180</td> <td>192</td> </tr> </tbody> </table>		FCA CODE	H2	RIF_M18L120	117	RIF_M18L150	142	RIF_M18L180	192
FCA CODE	H2								
RIF_M18L120	117								
RIF_M18L150	142								
RIF_M18L180	192								

Standard FCA

**BRACKET FOR CLAMPS - KLAMMERN FÜR CLAMPS - STAFFE PER CLAMPS**



**ST\_S01**



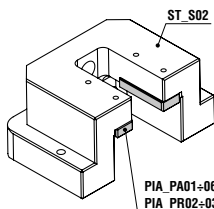
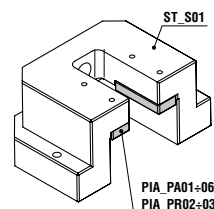
**ST\_S02**

**Notes**

**Material:** 36CrNiMo4  
950 ± 1000 N/mm<sup>2</sup>



**Application example\***



\* See STD 10062  
Sehen STD 10062  
Vedi STD 10062

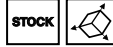
	<b>FCA CODE</b>
	<b>ST_S02</b>
<b>FCA CODE</b>	<b>A</b>
<b>ST_S01</b>	<b>51</b>
<b>ST_S02</b>	<b>56</b>



**PLATE FOR BRACKET - HALTESTÜCKE FÜR KLAMMERN - PIASTRINA PER STAFFE**

**Notes**

**Material:** 36CrNiMo4 - **HRC:** 50+52



FCA CODE
PIA_PA01

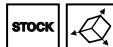
FCA CODE
PIA_PA01

Standard FCA

**PLATE FOR BRACKET - HALTESTÜCKE FÜR KLAMMERN - PIASTRINA PER STAFFE**

**Notes**

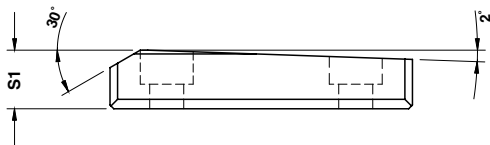
**Material:** 36CrNiMo4 - **HRC:** 50+52



FCA CODE
PIA_PA02

FCA CODE
PIA_PA02

**PLATE FOR BRACKET - HALTESTÜCKE FÜR KLAMMERN - PIASTRINA PER STAFFE**



**Notes**

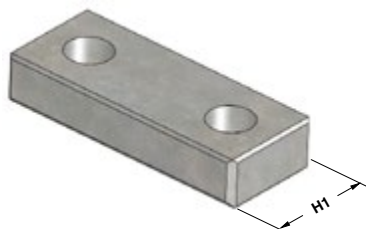
**Material:** 36CrNiMo4 · **HRC:** 50±52



<b>FCA CODE</b>	S1
<b>PIA_PA05</b>	

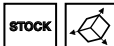
<b>FCA CODE</b>	<b>S1</b>
<b>PIA_PA05</b>	15.5
<b>PIA_PA06</b>	20.5

**PLATE FOR BRACKET - HALTESTÜCKE FÜR KLAMMERN - PIASTRINA PER STAFFE**



**Notes**

**Material:** 36CrNiMo4 · **HRC:** 50±52



<b>FCA CODE</b>	H1
<b>PIA_PR03</b>	

<b>FCA CODE</b>	<b>H1</b>
<b>PIA_PR02</b>	32.5
<b>PIA_PR03</b>	35

**LOCATING - ZENTRIERUNG - CENTRAGGIO STAMPO**



**Notes**

**Material:** 36CrNiMo4



FCA CODE

CNT\_ST\_01

FCA CODE

CNT\_ST\_01

**STOP BLOCK - ANSCHLAG - FINE CORSA DIRITTO E A "V"**



**CTN\_ST\_02**

**CTN\_ST\_03**

**Notes**

**Material:** 36CrNiMo4



FCA CODE

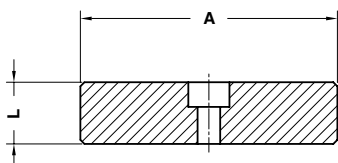
CTN\_ST\_03

FCA CODE

CTN\_ST\_02

CTN\_ST\_03

**KEY - PASSFEDER - CHIAVETTA DI REAZIONE**



**Notes**

**Material:** CK45



FCA CODE

CH\_R\_025125

FCA CODE

A

L

CH\_R\_025080

80

25

CH\_R\_025125

125

25

CH\_R\_030080

80

30

CH\_R\_030125

125

30

CH\_R\_034090

90

34

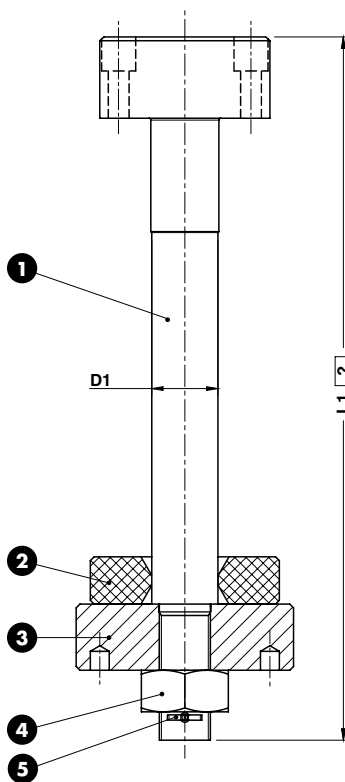
RETAINER BOLT - ZUGBOLZENSATZ - GRUPPO TIRANTE DI SICUREZZA



Notes

- 1 3 Material: 36NiCrMo4
- 2 Material: Urelast 92SH
- 4 Nut
- 5 Split pin DIN 94

Only for replacement  
Nur für Reparatur  
Solo per riparazione



ORDER EXAMPLE	FCA CODE	L1=300
	TNRT_LAV_45	300

FCA CODE	D1
TNRT_LAV_35	35
TNRT_LAV_45	45



**OMCR**  
STANDARD DIE COMPONENTS



