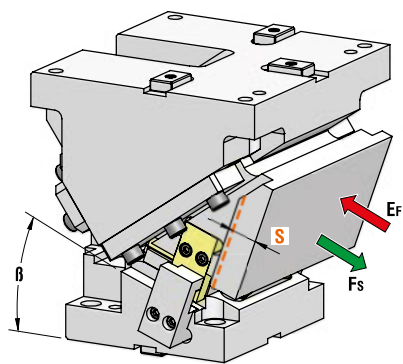




AERIAL CAM UNIT - OBEN HÄNGENDER SCHIEBER - UNITÀ A CAMME SOSPESA



P.605

OMCR CODE	Work Angle β	Stroke (mm) S	Max Work Force with shoulder (kN) F_s	Extraction Force (kN) E_f	
				Spring	Gas Spring
CHD300.00	0°	28,68	645	4,58	14,30
CHD300.05	5°	32,26	645	4,58	14,30
CHD300.10	10°	35,90	645	4,58	14,30
CHD300.15	15°	39,65	645	4,58	14,30
CHD300.20	20°	43,59	645	4,58	14,30
CHD300.25	25°	47,78	645	4,58	14,30
CHD300.30	30°	52,33	645	4,58	14,30
CHD300.35	35°	57,36	645	4,58	14,30
CHD300.40	40°	63,05	645	4,58	14,30
CHD300.45	45°	69,64	645	4,58	14,30
CHD300.50	50°	77,49	645	4,58	14,30
CHD300.55	55°	87,17	645	4,58	14,30
CHD300.60	60°	99,62	645	4,58	14,30
CHD300.65	65°	116,51	645	4,58	14,30

*Return Type: G = Gas Spring / S = Spring

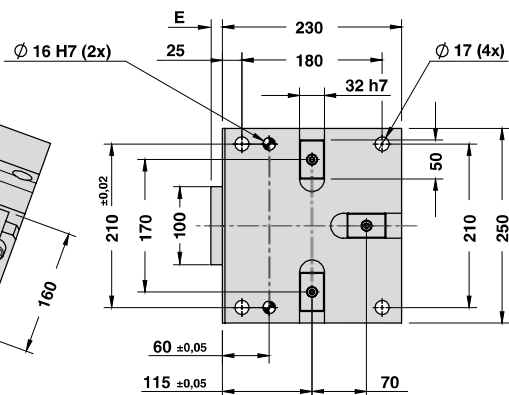
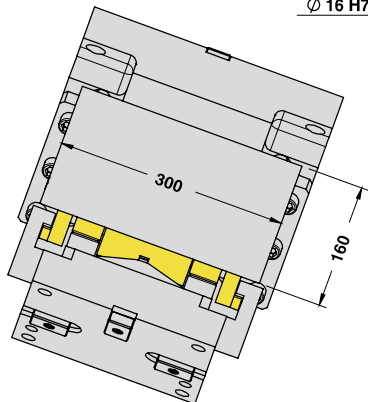
15	ORDER EXAMPLE	Art.	Work Angle = 5°	Return Type*
		CHD300	05	G

OMCR CODE	Work Angle β	Overall Dimensions (mm)				
		A	B	C	D	E
CHD300.00	0°	325	90	80	310	25
CHD300.05	5°	323,19	93,41	60	290	25
CHD300.10	10°	326,01	98,40	45	275	25
CHD300.15	15°	333,33	104,92	35	265	20
CHD300.20	20°	340,02	112,93	25	255	15
CHD300.25	25°	345,94	122,35	15	245	10
CHD300.30	30°	345,98	133,14	0	230	0
CHD300.35	35°	345,03	160,19	-15	215	0
CHD300.40	40°	337,97	173,42	-35	195	0
CHD300.45	45°	334,71	187,72	-50	180	0
CHD300.50	50°	325,15	202,99	-70	160	0
CHD300.55	55°	314,23	219,12	-90	140	0
CHD300.60	60°	306,86	235,98	-105	125	0
CHD300.65	65°	298	253,44	-120	110	0

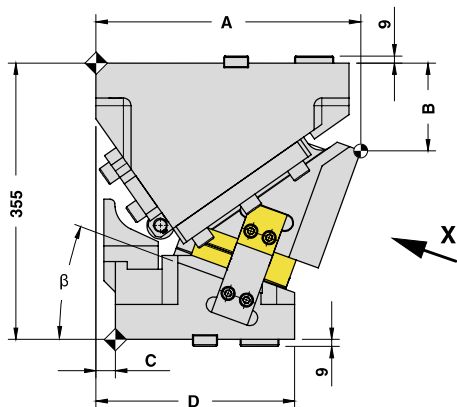
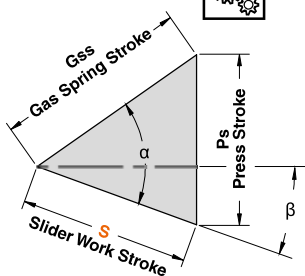


AERIAL CAM UNIT - OBEN HÄNGENDER SCHIEBER - UNITÀ A CAMME SOSPESA

X VIEW

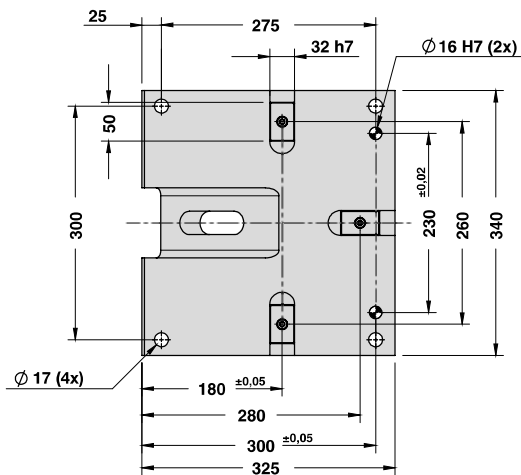


CAM DIAGRAM



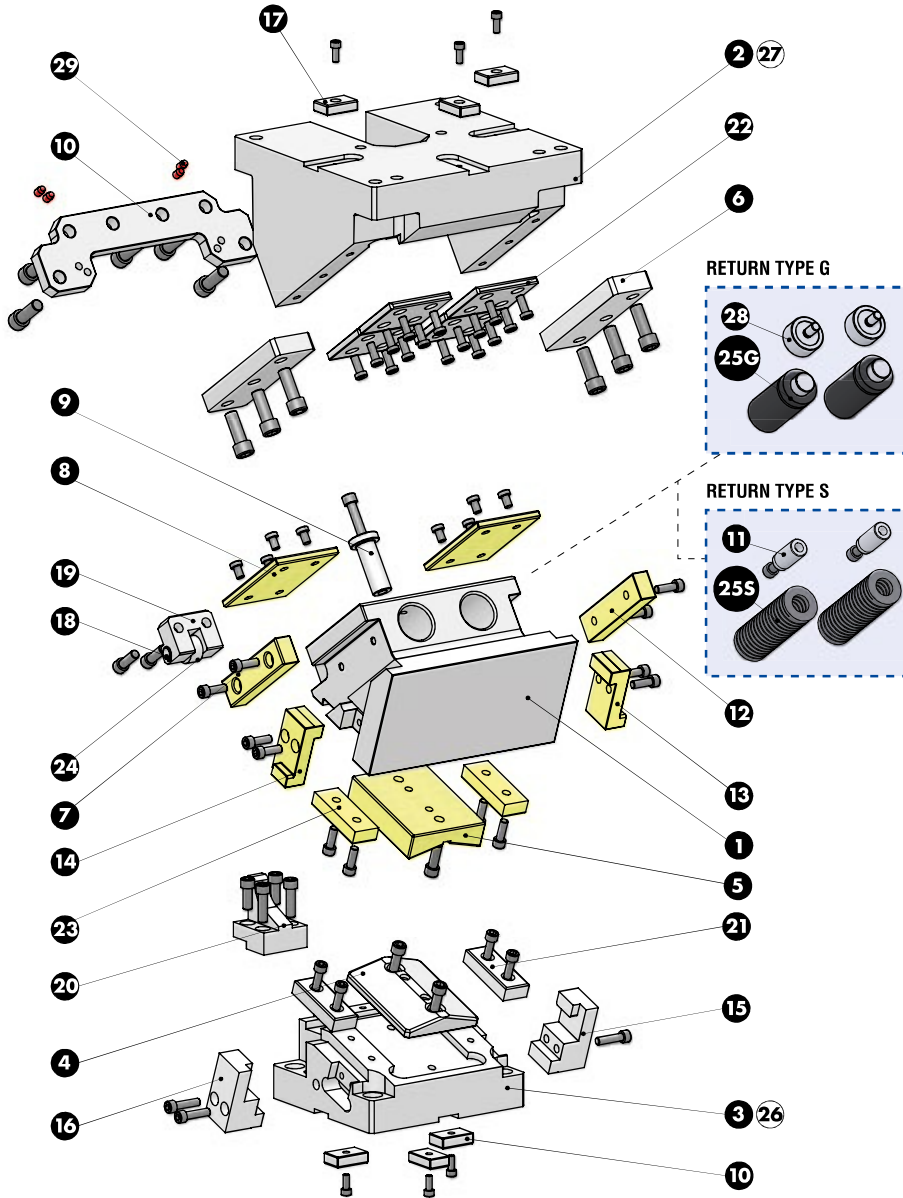
Cam Units CHD

Work Angle	Inner Angle	Slider Work Stroke (mm)	Press Stroke (mm)	Gas Spring Stroke (mm)
β	α	S	Ps	Gss
0°	55°	28,68	40,96	50
5°	55°	32,26	41,11	50
10°	55°	35,90	41,59	50
15°	55°	39,65	42,40	50
20°	55°	43,59	43,59	50
25°	55°	47,78	45,19	50
30°	55°	52,33	47,29	50
35°	55°	57,36	50,00	50
40°	55°	63,05	53,47	50
45°	55°	69,64	57,92	50
50°	55°	77,49	63,72	50
55°	55°	87,17	71,41	50
60°	55°	99,62	81,92	50
65°	55°	116,51	96,91	50





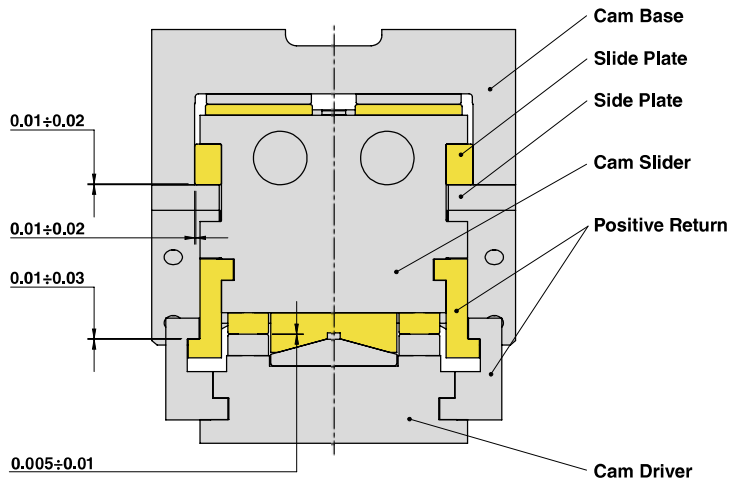
AERIAL CAM UNIT - OBEN HÄNGENDER SCHIEBER - UNITÀ A CAMME SOSPESA





AERIAL CAM UNIT - OBEN HÄNGENDER SCHIEBER - UNITÀ A CAMME SOSPESA

SLIDER STRUCTURE, POSITIVE RETURN STRUCTURE AND CLEARANCES



PART LIST

Particular number	Description	Material	Quantity
1	Cam Slider	GG-30	1
2	Cam Base	GG-30	1
3	Cam Driver	GG-30	1
4	Male "V" Driver	CK45	1
5	Female "V" Driver	CuZn25Al5 + Graphite - HB > 190	1
6	Side Plate	CK45	2
7	Slide Plate L	CuZn25Al5 + Graphite - HB > 190	1
8	Wear Plate	CuZn25Al5 + Graphite - HB > 190	2
9	Safety Pin	CK45	1
10	Stopper Plate	St 52	1
11	Spring Guide Pin	CK45	2
12	Slide Plate R	CuZn25Al5 + Graphite - HB > 190	1
13	Positive Return R	CuZn25Al5 - HB > 190	1
14	Positive Return L	CuZn25Al5 - HB > 190	1
15	Positive Return R	42CrMo4 Nitrided	1
16	Positive Return L	42CrMo4 Nitrided	1
17	Key	CK45	6
18	Shaft	CK45	1
19	Roller Bracket	CK45	1
20	Accelerator	CK45	1
21	Wear Plate	CK45	2
22	Wear Plate	CK45	4
23	Wear Plate	CuZn25Al5 + Graphite - HB > 190	2
24	Roller	NATR15PP	1
25G	Gas Spring - Return Type G	-	2
25S	Spring - Return Type S	-	2
26	Cam Driver Fixing Screws M16x70 DIN 912	-	4
27	Cam Base Fixing Screws M16x70 DIN 912	-	4
28	Gas Spring Spacer	CK45	2
29	Elastomer Cap	Elastomer 92SH	4

Cam Units CHD

