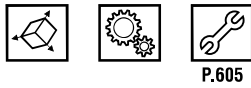
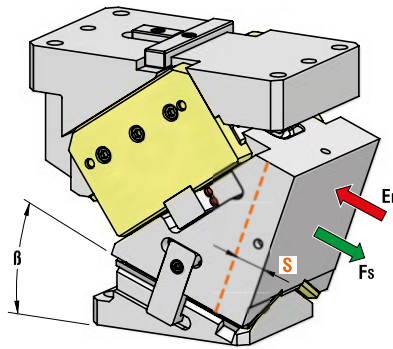




AERIAL CAM UNIT - OBEN HÄNGENDER SCHIEBER - UNITÀ A CAMME SOSPESA



OMCR CODE	Work Angle	Stroke (mm)	Max Work Force with shoulder (kN)	Extraction Force (kN)
	β	S	F _s	E _f Gas Spring
CHV180.00	0°	32,14	474	16,2
CHV180.05	5°	35,49	488	16,2
CHV180.10	10°	35,90	503	17,3
CHV180.15	15°	39,65	518	17,3
CHV180.20	20°	43,59	533	17,3
CHV180.25	25°	45,19	542	18,2
CHV180.30	30°	50	543	18,2
CHV180.35	35°	52,86	543	18,9
CHV180.40	40°	59,16	550	18,9
CHV180.45	45°	64,09	557	19,5
CHV180.50	50°	73,10	564	19,5
CHV180.55	55°	81,92	571	20,0
CHV180.60	60°	96,59	578	20,0
CHV180.65	65°	91,42	584	20,2
CHV180.70	70°	84,73	591	20,4
CHV180.75	75°	76,10	598	20,3

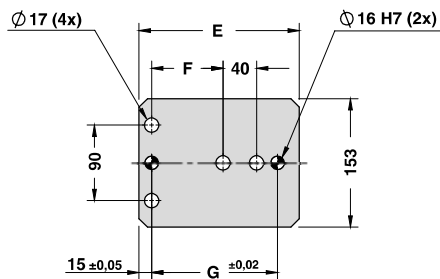
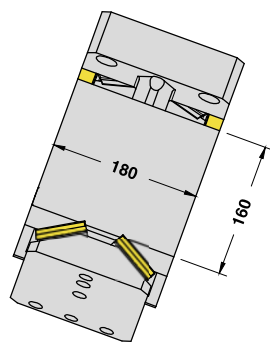
15	ORDER COMPLETE	Art.	Work Angle = 5°
		CHV180	05

OMCR CODE	Work Angle	Overall Dimensions (mm)											
		β	A	B	C	D	E	F	G	H	I	J	K
CHV180.00	0°	298	65	70	290	220	85	150	25	270	54	117	310
CHV180.05	5°	307,20	69,35	70	280	210	85	150	25	270	61,5	124,5	310
CHV180.10	10°	313,81	89,28	70	270	200	85	150	25	270	69	132	310
CHV180.15	15°	321,70	94,96	70	265	195	85	150	25	270	78	141	310
CHV180.20	20°	329,51	101,32	70	261	191	85	150	25	270	85,5	148,5	310
CHV180.25	25°	342,93	117,42	60	259	199	105	170	15	320	104,5	167,5	350
CHV180.30	30°	352,11	125,39	60	259	199	105	170	15	320	112	175	350
CHV180.35	35°	364,66	130,30	60	261	201	105	170	15	320	119,5	182,5	350
CHV180.40	40°	371,87	144,51	60	257	197	105	170	15	320	127	190	350
CHV180.45	45°	325,76	152,27	20	202	182	85	150	15	310	73	136	340
CHV180.50	50°	332,72	168,31	20	199	179	85	150	15	310	79	142	340
CHV180.55	55°	347,32	179,21	20	206	186	85	150	15	310	64,5	127,5	340
CHV180.60	60°	353,59	197,11	20	202	182	85	150	15	310	71,5	134,5	340
CHV180.65	65°	359,15	205,52	20	201	181	85	150	15	310	71,5	134,5	340
CHV180.70	70°	334,26	226,10	0	168	168	70	135	15	310	71,5	134,5	340
CHV180.75	75°	338,15	234,94	0	172	172	70	135	15	310	71,5	134,5	340

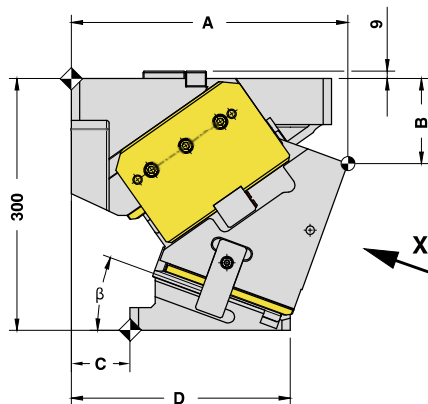
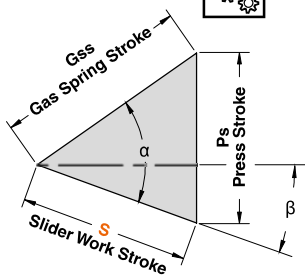


AERIAL CAM UNIT - OBEN HÄNGENDER SCHIEBER - UNITÀ A CAMME SOSPESA

X VIEW

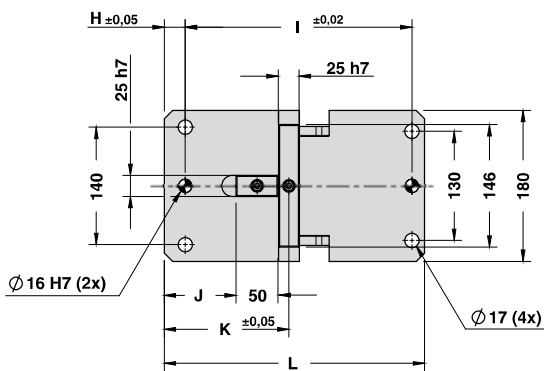


CAM DIAGRAM



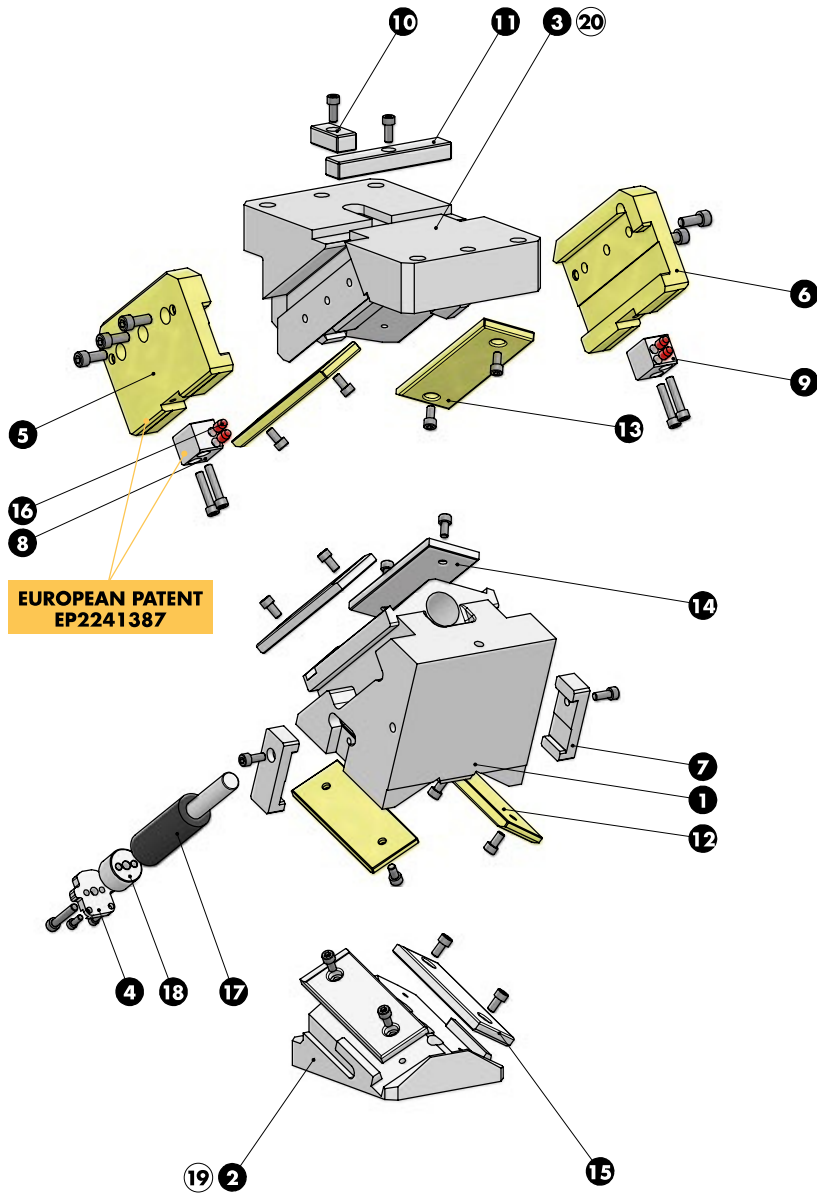
Cam Units CHV

Work Angle	Inner Angle	Slider Work Stroke (mm)	Press Stroke (mm)	Gas Spring Stroke (mm)
β	α	S	Ps	Gss
0°	50°	32,14	38,30	50
5°	50°	35,49	38,45	50
10°	55°	35,90	41,59	50
15°	55°	39,65	42,40	50
20°	55°	43,59	43,59	50
25°	60°	45,19	47,78	50
30°	60°	50,00	50,00	50
35°	65°	52,86	55,32	50
40°	65°	59,16	59,16	50
45°	70°	64,09	66,45	50
50°	70°	73,10	73,10	50
55°	75°	81,92	84,20	50
60°	75°	96,59	96,59	50
65°	80°	91,42	93,21	40
70°	85°	84,73	87,38	30
75°	85°	76,10	76,98	20





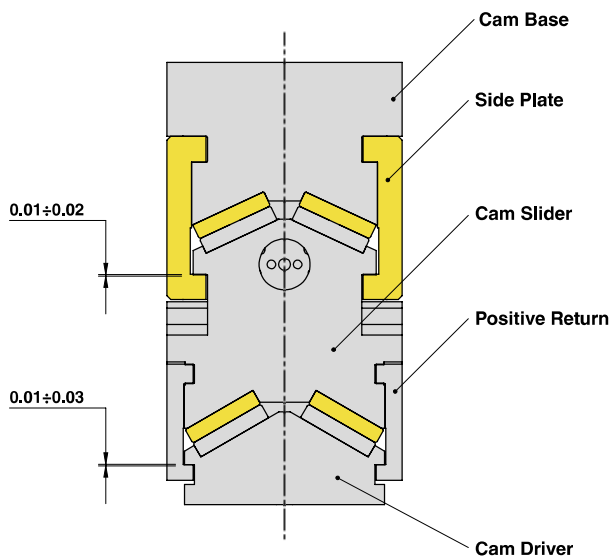
AERIAL CAM UNIT - OBEN HÄNGENDER SCHIEBER - UNITÀ A CAMME SOSPESA





AERIAL CAM UNIT - OBEN HÄNGENDER SCHIEBER - UNITÀ A CAMME SOSPESA

SLIDER STRUCTURE, POSITIVE RETURN STRUCTURE AND CLEARANCES



Cam Units CHV

PART LIST

Particular number	Description	Material	Quantity
1	Cam Slider	GGG-60	1
2	Cam Driver	GGG-60	1
3	Cam Base	GGG-60	1
4	Lock Plate	42CrMo4	1
5	Side Plate L	CuZn25Al5 + Graphite - HB > 190	1
6	Side Plate R	CuZn25Al5 + Graphite - HB > 190	1
7	Positive Return	42CrMo4 Nitrided	2
8	Slide Reaction L	CK45	1
9	Slide Reaction R	CK45	1
10	Key	CK45	1
11	Key	CK45	1
12	Wear Plate VDI 3357	CuZn25Al5 + Graphite - HB > 190	2
13	Wear Plate VDI 3357	CuZn25Al5 + Graphite - HB > 190	2
14	Wear Plate VDI 3357	16MnCr5 - HRC 58-60	2
15	Wear Plate VDI 3357	16MnCr5 - HRC 58-60	2
16	Elastomer Cap	Elastomer 92SH	4
17	Gas Spring	-	1
18	Spring Spacer	CK45	1
19	Cam Driver Fixing Screws M16x55 DIN 912	-	4
20	Cam Base Fixing Screws M16x65 DIN 912	-	4
-	Lockout System	(more info on OMCR website)	1

