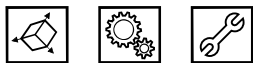
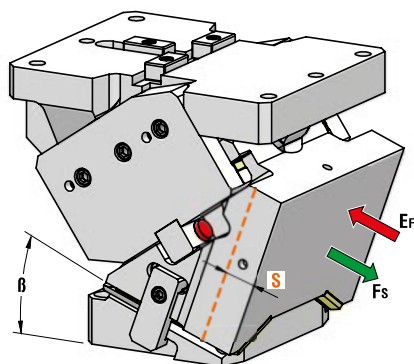




AERIAL CAM UNIT - OBEN HÄNGENDER SCHIEBER - UNITÀ A CAMME SOSPESA



P.605

OMCR CODE	Work Angle	Stroke (mm)	Max Work Force with shoulder (kN)	Extraction Force (kN)
	β	S	F _s	E _f Gas Spring
CHV260.00	0°	32,14	536	30,5
CHV260.05	5°	35,49	564	30,8
CHV260.10	10°	35,90	593	31,3
CHV260.15	15°	39,65	621	31,7
CHV260.20	20°	43,59	650	32,4
CHV260.25	25°	45,19	673	32,7
CHV260.30	30°	50	690	33,7
CHV260.35	35°	52,86	708	33,9
CHV260.40	40°	59,16	737	35,2
CHV260.45	45°	64,09	744	35,2
CHV260.50	50°	73,10	747	37,0
CHV260.55	55°	81,92	751	36,9
CHV260.60	60°	96,59	755	39,5
CHV260.65	65°	91,42	759	40,7
CHV260.70	70°	100,78	763	45,7
CHV260.75	75°	95,13	767	45,3



Art.	Work Angle = 5°
CHV260	05

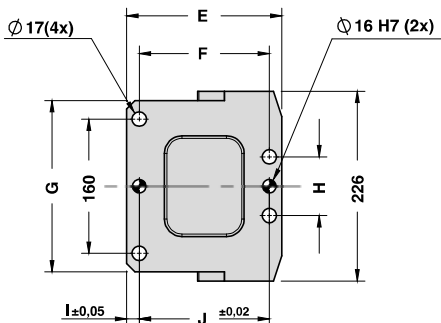
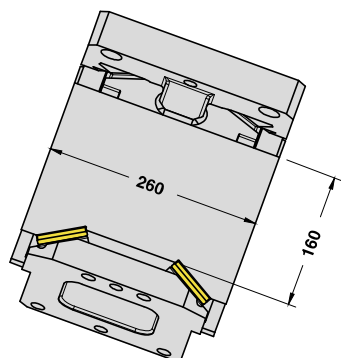
OMCR CODE	Work Angle	Overall Dimensions (mm)															
		β	A	B	C	D	E	F	G	H	I	J	K	L	M	N	O
CHV260.00	0°	308	60	80	295	215	155	204	70	15	155	25	280	63,5	50	127	320
CHV260.05	5°	317,63	64,37	80	290	210	155	204	90	15	155	25	280	70,5	50	134	320
CHV260.10	10°	323,81	89,28	80	280	200	155	204	70	15	155	25	280	78,5	50	142	320
CHV260.15	15°	331,70	94,96	80	270	190	155	204	70	15	155	25	280	76	50	151	320
CHV260.20	20°	337,80	106,02	80	265	185	155	204	70	15	155	25	280	76	50	151	320
CHV260.25	25°	345,05	112,89	60	255	195	150	204	70	15	150	15	330	52,5	120	167,5	360
CHV260.30	30°	357,11	116,73	60	250	190	150	204	70	15	150	15	330	60	120	175	360
CHV260.35	35°	362,94	132,76	60	245	185	150	204	70	15	150	15	330	62,5	130	182,5	360
CHV260.40	40°	373,16	142,98	60	240	180	150	204	70	15	150	15	330	70	130	190	360
CHV260.45	45°	348,64	154,39	45	205	160	130	204	70	15	130	15	335	71	100	161	365
CHV260.50	50°	355,42	170,24	45	205	160	130	204	70	15	130	15	335	79	100	167	365
CHV260.55	55°	361,67	186,67	45	215	170	130	204	70	15	130	15	335	64,5	100	152,5	365
CHV260.60	60°	371,66	201,11	45	205	160	130	204	70	15	130	15	335	49,5	120	159,5	365
CHV260.65	65°	367,84	213,13	45	211	166	120	204	70	20	120	15	335	49,5	120	159,5	365
CHV260.70	70°	372,05	220,55	45	210	165	130	226	90	15	130	15	335	49,5	120	159,5	365
CHV260.75	75°	352,07	246,93	35	185	150	115	226	90	15	115	15	335	49,5	120	159,5	365



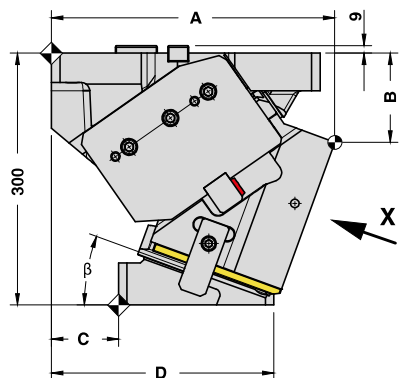
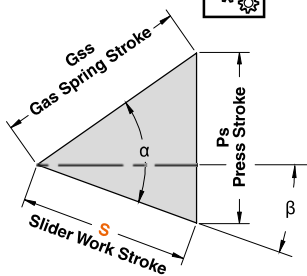


AERIAL CAM UNIT - OBEN HÄNGENDER SCHIEBER - UNITÀ A CAMME SOSPESA

X VIEW

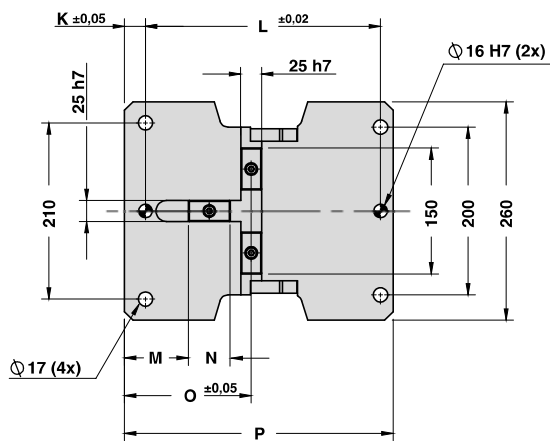


CAM DIAGRAM



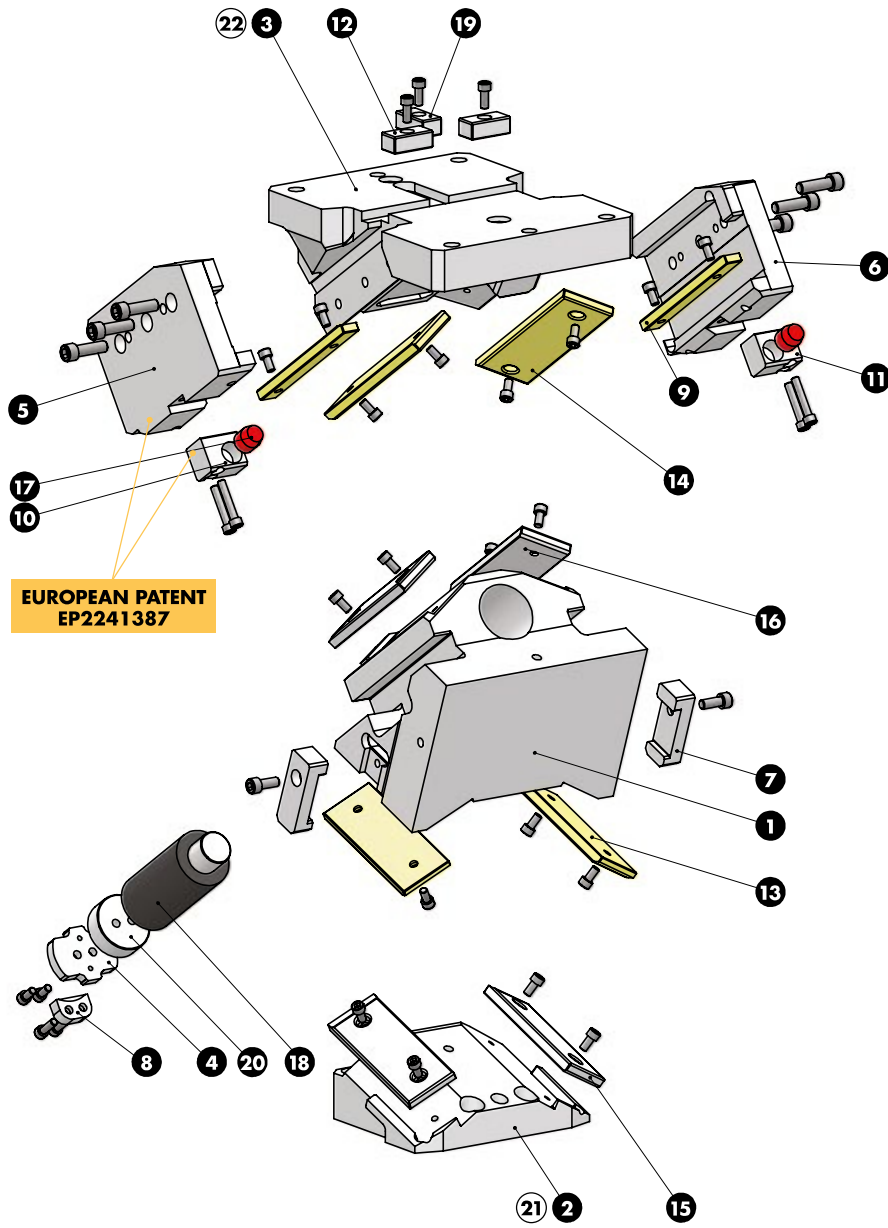
Cam Units CHV

Work Angle	Inner Angle	Slider Work Stroke (mm)	Press Stroke (mm)	Gas Spring Stroke (mm)
β	α	S	Ps	Gss
0°	50°	32,14	38,30	50
5°	50°	35,49	38,45	50
10°	55°	35,90	41,59	50
15°	55°	39,65	42,40	50
20°	55°	43,59	43,59	50
25°	60°	45,19	47,78	50
30°	60°	50,00	50,00	50
35°	65°	52,86	55,32	50
40°	65°	59,16	59,16	50
45°	70°	64,09	66,45	50
50°	70°	73,10	73,10	50
55°	75°	81,92	84,20	50
60°	75°	96,59	96,59	50
65°	80°	91,42	93,21	40
70°	80°	100,78	100,78	35
75°	85°	95,13	96,23	25





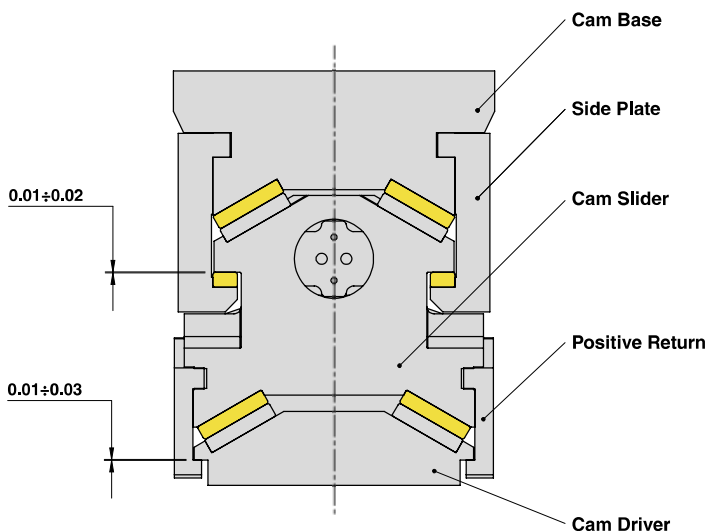
AERIAL CAM UNIT - OBEN HÄNGENDER SCHIEBER - UNITÀ A CAMME SOSPESA





AERIAL CAM UNIT - OBEN HÄNGENDER SCHIEBER - UNITÀ A CAMME SOSPESA

SLIDER STRUCTURE, POSITIVE RETURN STRUCTURE AND CLEARANCES



PART LIST

Particular number	Description	Material	Quantity
1	Cam Slider	GGG-60	1
2	Cam Driver	GGG-60	1
3	Cam Base	GGG-60	1
4	Lock Plate	42CrMo4	1
5	Side Plate L	42CrMo4	1
6	Side Plate R	42CrMo4	1
7	Positive Return	42CrMo4 Nitrided	2
8	Safety Plate	CK45	1
9	Wear Plate	CuZn25Al5 + Graphite - HB > 190	2
10	Slide Reaction L	CK45	1
11	Slide Reaction R	CK45	1
12	Key	CK45	2
13	Wear Plate VDI 3357	CuZn25Al5 + Graphite - HB > 190	2
14	Wear Plate VDI 3357	CuZn25Al5 + Graphite - HB > 190	2
15	Wear Plate VDI 3357	16MnCr5 - HRC 58-60	2
16	Wear Plate VDI 3357	16MnCr5 - HRC 58-60	2
17	Elastomer Cap	Elastomer 92SH	2
18	Gas Spring	-	1
19	Key	CK45	1
20	Spring Spacer	CK45	1
21	Cam Driver Fixing Screws M16x55 DIN 912	-	4
22	Cam Base Fixing Screws M16x65 DIN 912	-	4
-	Lockout System	(more info on OMCR website)	1

Cam Units CHV

