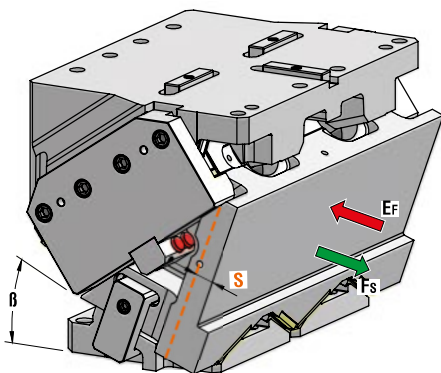




**AERIAL CAM UNIT - OBEN HÄNGENDER SCHIEBER - UNITÀ A CAMME SOSPESA**



OMCR CODE	Work Angle	Stroke (mm)	Max Work Force with shoulder (kN)	Extraction Force (kN)
	$\beta$	S	Fs	Ef Gas Spring
CHV600.00	0°	37,28	1202	98,1
CHV600.05	5°	41,17	1202	98,1
CHV600.10	10°	41,64	1202	98,5
CHV600.15	15°	46,00	1202	98,5
CHV600.20	20°	50,56	1202	98,5
CHV600.25	25°	52,42	1202	98,2
CHV600.30	30°	58,00	1202	98,2
CHV600.35	35°	61,32	1202	97,1
CHV600.40	40°	68,62	1202	97,1
CHV600.45	45°	74,34	1202	95,2
CHV600.50	50°	84,79	1202	95,2
CHV600.55	55°	95,02	1202	92,6
CHV600.60	60°	112,05	1202	92,6
CHV600.65	65°	102,85	1202	88,8
CHV600.70	70°	127,09	1202	84,9
CHV600.75	75°	114,15	1202	84,2



Art.	Work Angle = 5°
CHV600	05

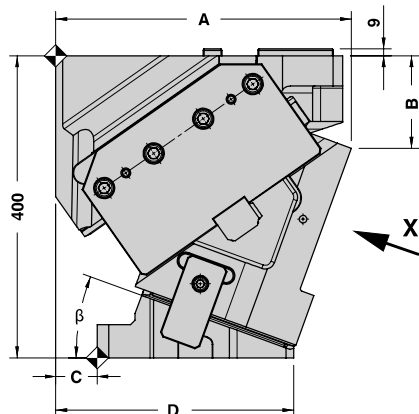
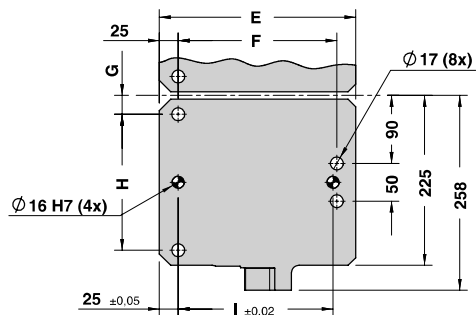
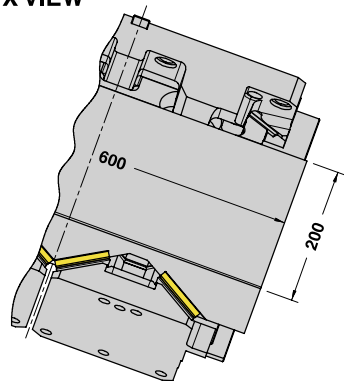
OMCR CODE	Work Angle	Overall Dimensions (mm)																		
		$\beta$	A	B	C	D	E	F	G	H	I	J	K	L	M	N	O	P	Q	R
CHV600.00	0°	368,00	75,00	120	375	255	205	25	180	200	30	330	360	272,5	167,5	600	560	250	330	385
CHV600.05	5°	377,63	89,37	105	363	258	210	25	180	205	30	330	360	272,5	182,5	600	560	250	330	385
CHV600.10	10°	387,28	99,59	105	350	245	205	25	180	200	30	330	360	272,5	192,5	600	560	250	330	385
CHV600.15	15°	396,88	110,64	95	340	245	195	25	180	190	30	330	360	272,5	207,5	600	560	250	330	385
CHV600.20	20°	391,35	122,53	55	315	260	210	25	180	205	30	325	355	267,5	207,5	530	280	90	325	380
CHV600.25	25°	400,61	135,23	55	305	250	200	25	180	195	30	325	355	267,5	222,5	530	280	90	325	380
CHV600.30	30°	409,61	138,74	45	295	250	200	25	180	195	30	345	375	287,5	222,5	530	280	90	345	400
CHV600.35	35°	418,26	153,01	5	285	280	230	25	180	225	30	355	385	302,5	202,5	530	280	90	355	415
CHV600.40	40°	426,51	168,02	5	280	275	225	25	180	220	30	380	410	322,5	217,5	530	280	90	380	435
CHV600.45	45°	434,30	183,73	5	270	265	215	25	180	210	30	380	410	322,5	242,5	530	280	90	380	435
CHV600.50	50°	419,53	180,82	-5	220	225	175	25	180	170	30	400	430	342,5	232,5	530	280	100	400	455
CHV600.55	55°	427,80	199,87	-5	210	215	165	25	180	160	30	400	430	342,5	247,5	530	280	100	400	455
CHV600.60	60°	425,24	224,61	-15	200	215	165	25	180	160	30	400	430	342,5	267,5	530	280	100	400	455
CHV600.65	65°	431,81	244,96	5	190	185	140	35	160	130	55	415	470	382,5	262,5	600	560	250	440	495
CHV600.70	70°	437,45	270,84	5	185	180	135	35	160	125	55	415	470	382,5	262,5	600	560	250	440	495
CHV600.75	75°	442,12	292,17	5	180	175	120	35	160	130	55	415	470	382,5	327,5	600	560	250	440	495



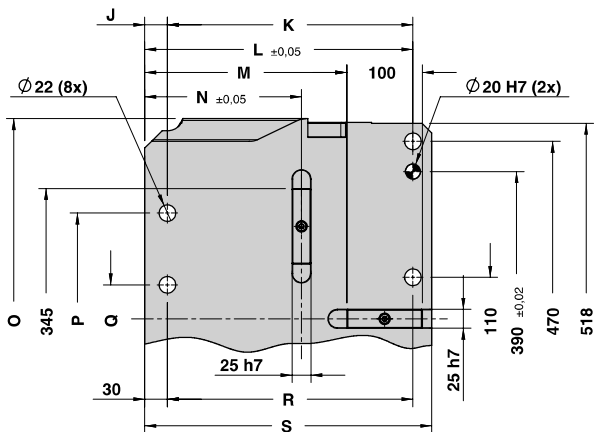


AERIAL CAM UNIT - OBEN HÄNGENDER SCHIEBER - UNITÀ A CAMME SOSPESA

X VIEW



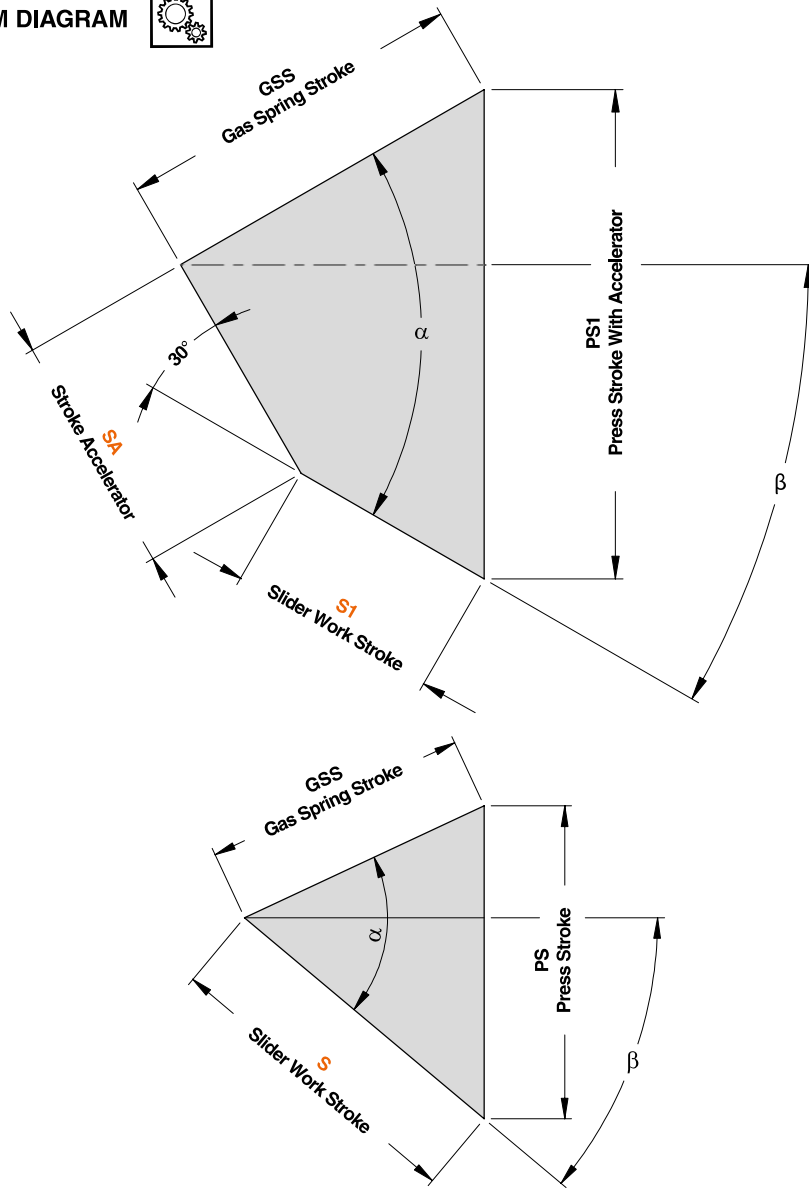
Cam Units CHV





AERIAL CAM UNIT - OBEN HÄNGENDER SCHIEBER - UNITÀ A CAMME SOSPESA

CAM DIAGRAM



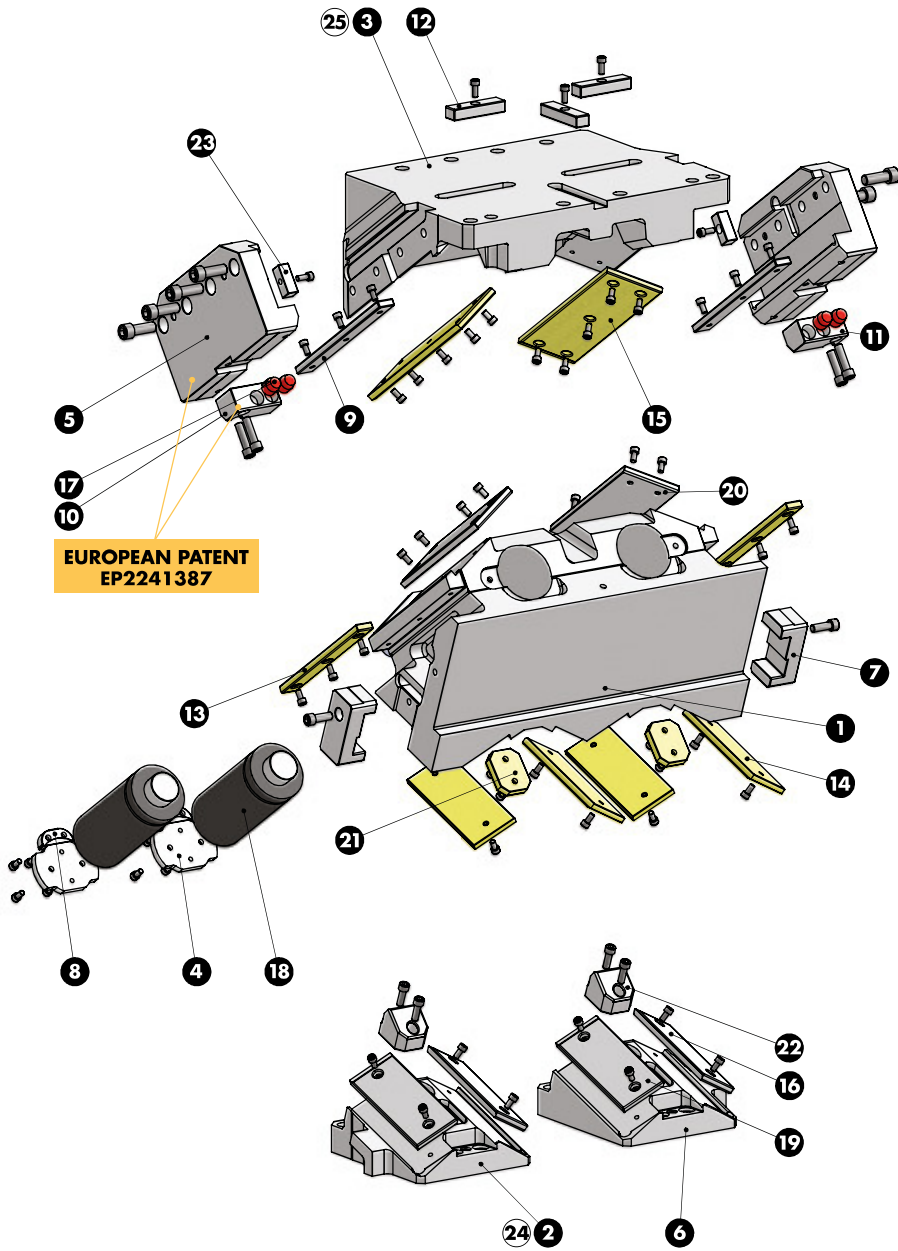

**AERIAL CAM UNIT - OBEN HÄNGENDER SCHIEBER - UNITÀ A CAMME SOSPESA**

OMCR CODE	Work Angle	Inner Angle	Slider Work Stroke (mm)		Press Stroke (mm)		Stroke Accelerator	Gas Spring Stroke (mm)
	$\beta$	$\alpha$	S	S1	Ps	Ps1	SA	Gss
CHV600.00	0°	50°	37,28	25,00	44,43	51,52	14,18	58
CHV600.05	5°	50°	41,17	25,00	44,60	54,47	19,66	58
CHV600.10	10°	55°	41,64	25,00	48,24	59,11	21,40	58
CHV600.15	15°	55°	46,00	35,00	49,19	56,96	15,02	58
CHV600.20	20°	55°	50,56	35,00	50,56	62,66	22,75	58
CHV600.25	25°	60°	52,42	35,00	55,42	70,61	27,53	58
CHV600.30	30°	60°	58,00	35,00	58,00	81,00	39,84	58
CHV600.35	35°	65°	61,32	40,00	64,17	89,39	41,32	58
CHV600.40	40°	65°	68,62	50,00	68,62	95,84	41,70	58
CHV600.45	45°	70°	74,34	55,00	77,08	114,44	52,84	58
CHV600.50	50°	70°	84,79	77,00	84,79	107,22	28,84	58
CHV600.55	55°	75°	95,02	-	97,67	-	-	58
CHV600.60	60°	75°	112,05	-	112,05	-	-	58
CHV600.65	65°	80°	102,85	-	104,86	-	-	45
CHV600.70	70°	85°	127,09	-	131,07	-	-	45
CHV600.75	75°	85°	114,15	-	115,47	-	-	30

Cam Units CHV



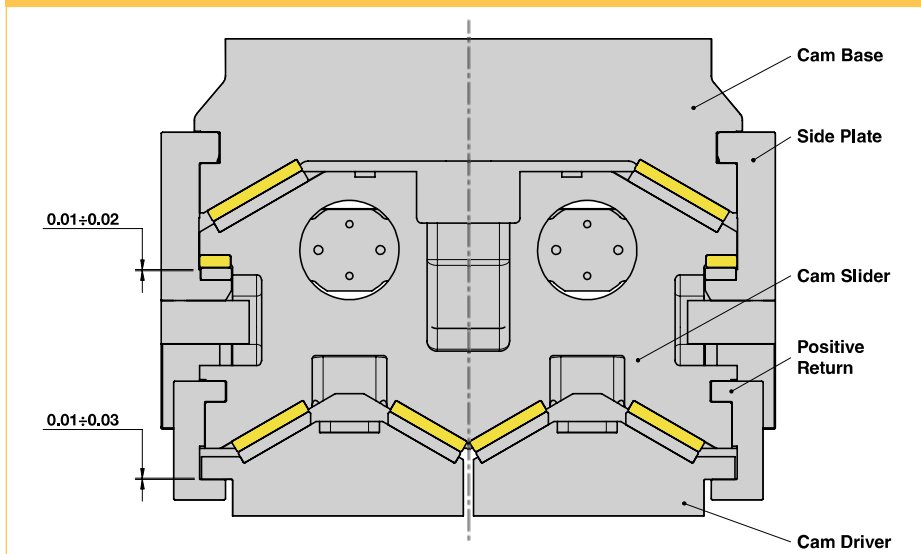
AERIAL CAM UNIT - OBEN HÄNGENDER SCHIEBER - UNITÀ A CAMME SOSPESA





**AERIAL CAM UNIT - OBEN HÄNGENDER SCHIEBER - UNITÀ A CAMME SOSPESA**

**SLIDER STRUCTURE, POSITIVE RETURN STRUCTURE AND CLEARANCES**



**PART LIST**

Particular number	Description	Material	Quantity
1	Cam Slider	GGG-60	1
2	Cam Driver L	GGG-60	1
3	Cam Base	GGG-60	1
4	Lock Plate	42CrMo4	2
5	Side Plate	42CrMo4	2
6	Cam Driver R	GGG-60	1
7	Positive Return	42CrMo4 Nitrided	2
8	Safety Plate	CK45	2
9	Wear Plate	16MnCr5 - HRC 58-60	2
10	Slide Reaction L	CK45	1
11	Slide Reaction R	CK45	1
12	Key	CK45	3
13	Wear Plate	CuZn25Al5 + Graphite - HB > 190	2
14	Wear Plate VDI 3357	CuZn25Al5 + Graphite - HB > 190	4
15	Wear Plate VDI 3357	CuZn25Al5 + Graphite - HB > 190	2
16	Wear Plate VDI 3357	16MnCr5 - HRC 58-60	2
17	Elastomer Cap	Elastomer 92SH	4
18	Gas Spring	-	2
19	Wear Plate VDI 3357	16MnCr5 - HRC 58-60	2
20	Wear Plate VDI 3357	16MnCr5 - HRC 58-60	2
21	Wear Plate	CuZn25Al5 + Graphite - HB > 190	2
22	Accelerator	CK45	2
23	Key	CK45	2
24	Cam Driver Fixing Screws M16x60 DIN 912	-	8
25	Cam Base Fixing Screws M20x70 DIN 912	-	8
-	Lockout System	(more info on OMCR website)	1

Cam Units CHV

