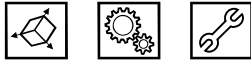
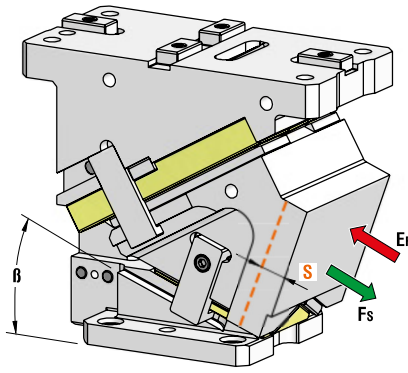


AERIAL CAM UNIT - OBEN HÄNGENDER SCHIEBER - UNITÀ A CAMME SOSPESA



P.605

OMCR CODE	Work Angle β	Stroke (mm) S	Max Work Force with shoulder (kN) Fs	Extraction Force (kN) Ef	
				Spring	Gas Spring
CHR165.00	0°	32,14	340	1,49	2,46
CHR165.05	5°	35,49	340	1,49	2,46
CHR165.10	10°	38,89	340	1,49	2,46
CHR165.15	15°	42,40	340	1,49	2,46
CHR165.20	20°	46,08	340	1,49	2,46
CHR165.25	25°	50	340	1,49	2,46
CHR165.30	30°	54,25	340	1,49	2,46
CHR165.35	35°	58,96	340	1,49	2,46
CHR165.40	40°	64,28	340	1,49	2,46
CHR165.45	45°	70,44	340	1,49	2,46
CHR165.50	50°	77,79	340	1,49	2,46
CHR165.55	55°	87,17	340	1,33	2,20
CHR165.60	60°	100	340	1,16	1,91

OPTION CODE

N	Dowel pin hole $\varnothing 16$ H7 drilled on Cam Base
---	--

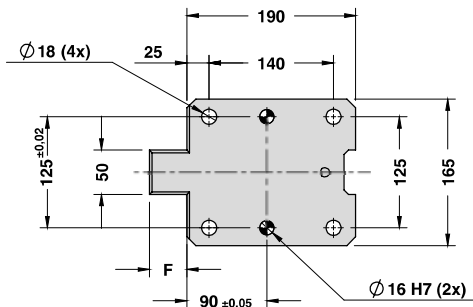
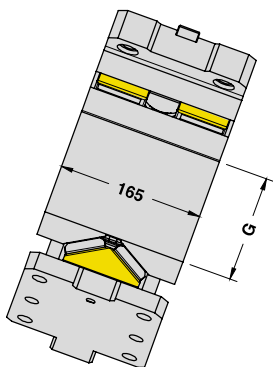
*Return Type: G = Gas Spring / S = Spring

		OPTION CODE			
		Art.	Work Angle = 5°	Return Type*	N
		CHR165	05	G	N16

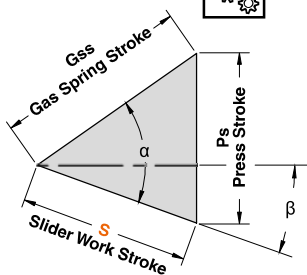
OMCR CODE	Work Angle β	Overall Dimensions (mm)						
		A	B	C	D	E	F	G
CHR165.00	0°	335,84	96,98	128	318	154,84	55	120
CHR165.05	5°	335,25	100,91	113	303	155,32	55	120
CHR165.10	10°	337,27	111,09	101	291	159,30	50	120
CHR165.15	15°	329,78	122,46	80	270	156,45	45	120
CHR165.20	20°	332,68	129,99	70	260	162,11	42	120
CHR165.25	25°	332,88	138,62	58	248	167,33	37	120
CHR165.30	30°	334,28	148,28	48	238	170,39	30	120
CHR165.35	35°	329,80	158,89	33	223	167,66	25	120
CHR165.40	40°	321,35	170,38	15	205	161,18	25	120
CHR165.45	45°	314,86	182,66	0	190	155,49	25	120
CHR165.50	50°	307,27	195,63	-15	175	149,10	0	120
CHR165.55	55°	296,59	210,30	-32	158	121,17	0	125
CHR165.60	60°	288,56	222,26	-45	145	113,04	0	125

AERIAL CAM UNIT - OBEN HÄNGENDER SCHIEBER - UNITÀ A CAMME SOSPESA

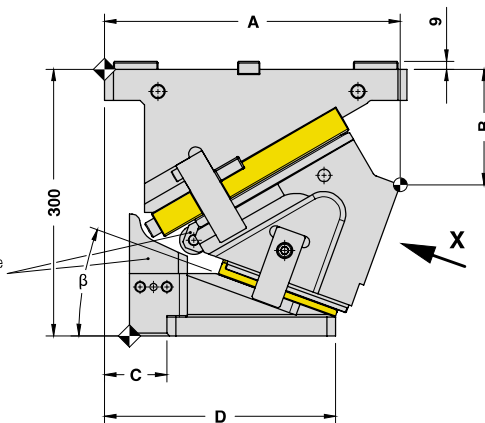
X VIEW



CAM DIAGRAM

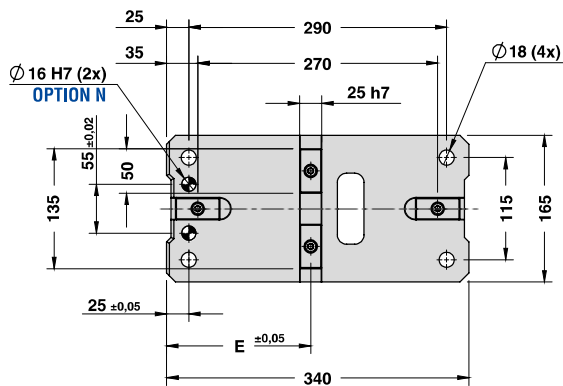


Accelerator available for work angles from 0° to 25°

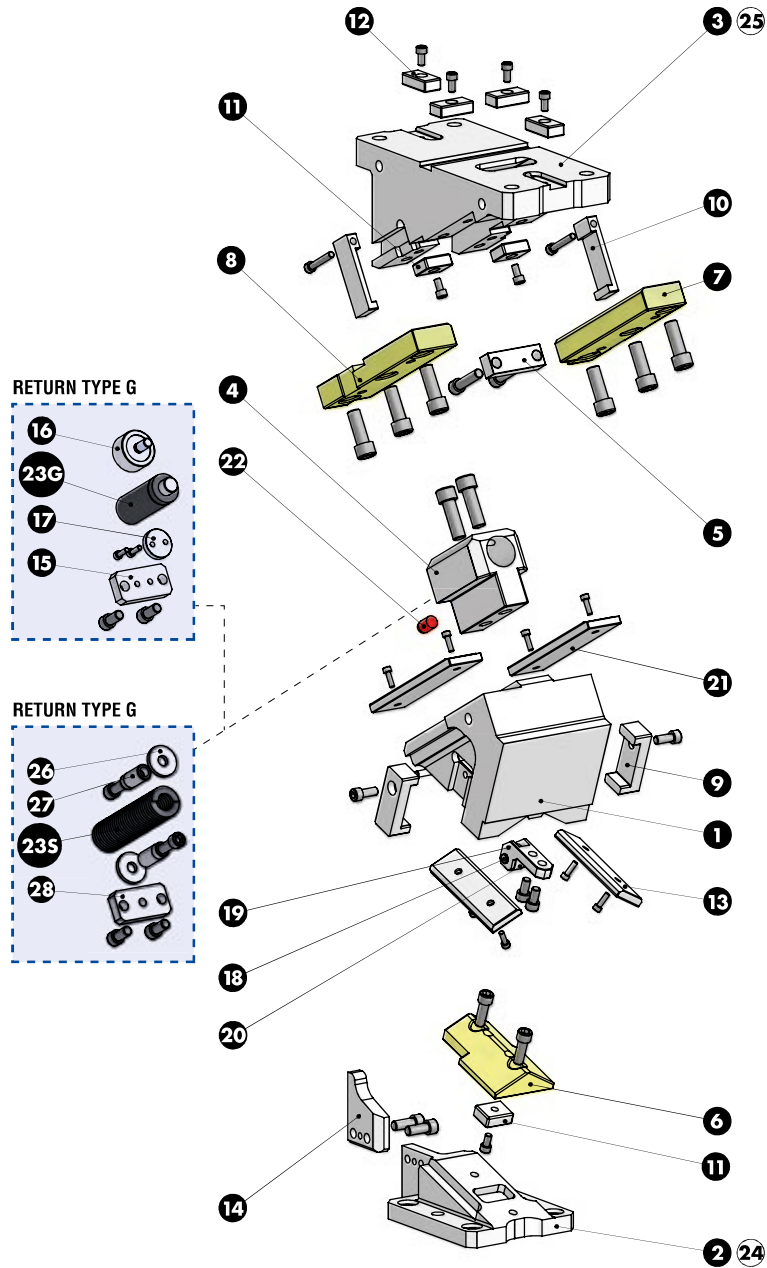


Cam Units CHR

Work Angle	Inner Angle	Slider Work Stroke (mm)	Press Stroke (mm)	Gas Spring Stroke (mm)
β	α	S	Ps	Gss
0°	50°	32,14	38,30	50
5°	50°	35,49	38,45	50
10°	50°	38,89	38,89	50
15°	50°	42,40	39,65	50
20°	50°	46,08	40,76	50
25°	50°	50,00	42,26	50
30°	50°	54,25	44,23	50
35°	50°	58,96	46,76	50
40°	50°	64,28	50,00	50
45°	50°	70,44	54,17	50
50°	50°	77,79	59,59	50
55°	55°	87,17	71,41	50
60°	60°	100,00	86,60	50

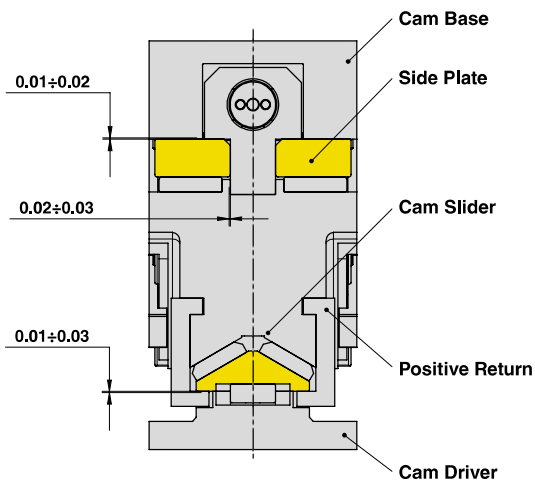


AERIAL CAM UNIT - OBEN HÄNGENDER SCHIEBER - UNITÀ A CAMME SOSPESA



AERIAL CAM UNIT - OBEN HÄNGENDER SCHIEBER - UNITÀ A CAMME SOSPESA

SLIDER STRUCTURE, POSITIVE RETURN STRUCTURE AND CLEARANCES



PART LIST

Particular number	Description	Material	Quantity
1	Cam Slider	GG-25	1
2	Cam Driver	GG-25	1
3	Cam Base	GG-25	1
4	Spring Guide Block	CK45 + Graphite	1
5	Stopper Plate	CK45	1
6	Male "V" Driver	CuZn25Al5 + Graphite - HB > 190	1
7	Side Plate R	CuZn25Al5 + Graphite - HB > 190	1
8	Side Plate L	CuZn25Al5 + Graphite - HB > 190	1
9	Positive Return	42CrMo4 Nitrided	2
10	Positive Return	CK45	2
11	Key	CK45	3
12	Key	CK45	4
13	Wear Plate	CK45	2
14	Accelerator	CK45	1
15	Spring Stopper Plate	CK45	1
16	Spring Guide Pin	CK45	1
17	Spring Spacer	CK45	1
18	Shaft	CK45	1
19	Roller Bracket	CK45	1
20	Roller	NATR15PP	1
21	Wear Plate VDI 3357	CK45	2
22	Elastomer Cap	Elastomer 92SH	1
23G	Gas Spring - Return Type G	-	1
23S	Spring - Return Type S	-	1
24	Cam Driver Fixing Screws M16x50 DIN 912	-	4
25	Cam Base Fixing Screws M16x60 DIN 912	-	4
26	Washer	CK45	1
27	Spring Guide Pin	CK45	1
28	Spring Stopper Plate	CK45	1

Cam Units CHR