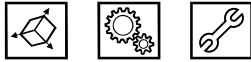
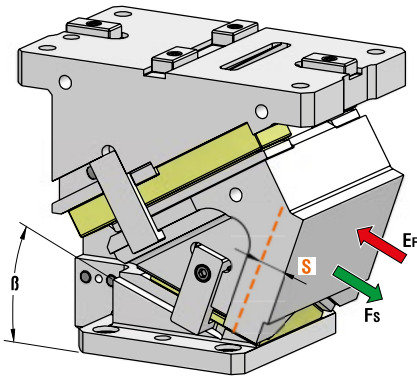


AERIAL CAM UNIT - OBEN HÄNGENDER SCHIEBER - UNITÀ A CAMME SOSPESA



P.605

OMCR CODE	Work Angle	Stroke (mm)	Max Work Force with shoulder (kN)	Extraction Force (kN)	
	β	S	F _s	Spring	Gas Spring
CHR200.00	0°	32,14	408	2,35	4,82
CHR200.05	5°	35,49	408	2,35	4,82
CHR200.10	10°	38,89	408	2,35	4,82
CHR200.15	15°	42,40	408	2,35	4,82
CHR200.20	20°	46,08	408	2,35	4,82
CHR200.25	25°	50	408	2,35	4,82
CHR200.30	30°	54,25	408	2,35	4,82
CHR200.35	35°	58,96	408	2,35	4,82
CHR200.40	40°	64,28	408	2,35	4,82
CHR200.45	45°	70,44	408	2,35	4,82
CHR200.50	50°	77,79	408	2,35	4,82
CHR200.55	55°	87,17	408	2,09	4,30
CHR200.60	60°	100	408	1,82	3,75

OPTION CODE

N	Dowel pin hole $\varnothing 16$ H7 drilled on Cam Base
---	--

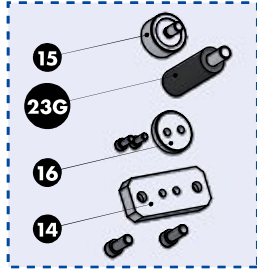
*Return Type: G = Gas Spring / S = Spring

				OPTION CODE
		Art.	Work Angle = 5°	Return Type*
		CHR200	05	G
				N
				N16

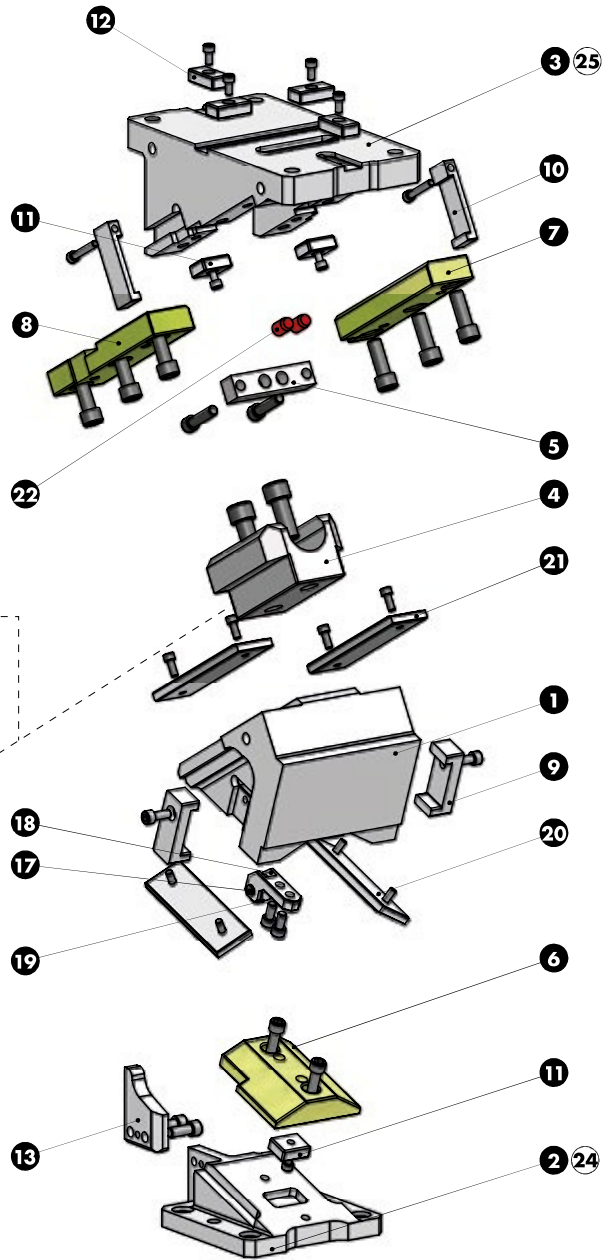
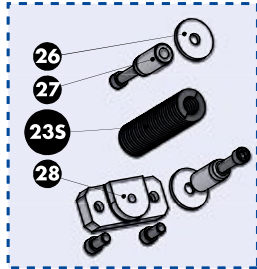
OMCR CODE	Work Angle	Overall Dimensions (mm)					
	β	A	B	C	D	E	F
CHR200.00	0°	335,84	96,98	128	318	154,84	55
CHR200.05	5°	335,25	100,91	113	303	155,32	55
CHR200.10	10°	337,27	111,09	101	291	159,30	50
CHR200.15	15°	329,78	122,46	80	270	156,45	45
CHR200.20	20°	332,68	129,99	70	260	162,11	42
CHR200.25	25°	332,88	138,62	58	248	167,33	37
CHR200.30	30°	334,28	148,28	48	238	170,39	30
CHR200.35	35°	329,80	158,89	33	223	167,66	25
CHR200.40	40°	321,35	170,38	15	205	161,18	25
CHR200.45	45°	314,86	182,66	0	190	155,49	25
CHR200.50	50°	307,27	195,63	-15	175	149,10	0
CHR200.55	55°	296,59	210,30	-32	158	121,17	0
CHR200.60	60°	288,56	222,26	-45	145	113,04	0

AERIAL CAM UNIT - OBEN HÄNGENDER SCHIEBER - UNITÀ A CAMME SOSPESA

RETURN TYPE G

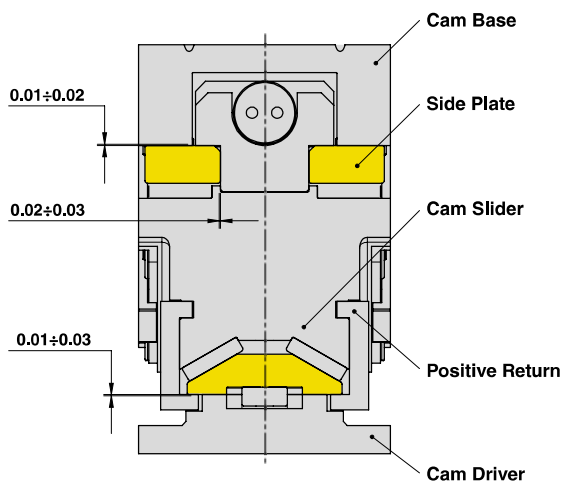


RETURN TYPE S



AERIAL CAM UNIT - OBEN HÄNGENDER SCHIEBER - UNITÀ A CAMME SOSPESA

SLIDER STRUCTURE, POSITIVE RETURN STRUCTURE AND CLEARANCES



PART LIST

Particular number	Description	Material	Quantity
1	Cam Slider	GG-25	1
2	Cam Driver	GG-25	1
3	Cam Base	GG-25	1
4	Spring Guide Block	CK45 + Graphite	1
5	Stopper Plate	CK45	1
6	Male "V" Driver	CuZn25Al5 + Graphite - HB > 190	1
7	Side Plate R	CuZn25Al5 + Graphite - HB > 190	1
8	Side Plate L	CuZn25Al5 + Graphite - HB > 190	1
9	Positive Return	42CrMo4 Nitrided	2
10	Positive Return	CK45	2
11	Key	CK45	3
12	Key	CK45	4
13	Accelerator	CK45	1
14	Spring Stopper Plate	CK45	1
15	Spring Guide Pin	CK45	1
16	Gas Spring Spacer	CK45	1
17	Shaft	CK45	1
18	Roller Bracket	CK45	1
19	Roller	NATR15PP	1
20	Wear Plate VDI 3357	CK45	2
21	Wear Plate VDI 3357	CK45	2
22	Elastomer Cap	Elastomer 92SH	2
23G	Gas Spring - Return Type G	-	1
23S	Spring - Return Type S	-	1
24	Cam Driver Fixing Screws M16x50 DIN 912	-	4
25	Cam Base Fixing Screws M16x60 DIN 912	-	4
26	Washer	CK45	1
27	Spring Guide Pin	CK45	1
28	Spring Stopper Plate	CK45	1

Cam Units CHR