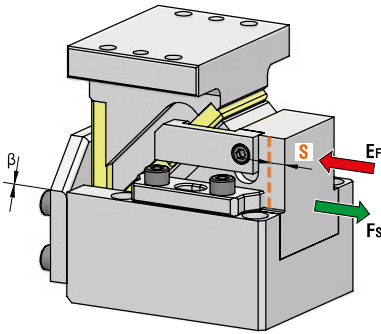
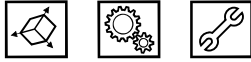




DIE MOUNTED CAM UNIT - HORIZONTALSCHIEBER - UNITÀ A CAMME A BASE STAMPO



OMCR CODE	Work Angle	Stroke (mm)	Max Work Force with shoulder (kN)	Extraction Force (kN)
	β	S	Fs	Ef
DHC052.00.25	0°	25	38	0,62
DHC052.00.40	0°	40	38	0,63
DHC052.00.60	0°	60	38	0,65



P.605

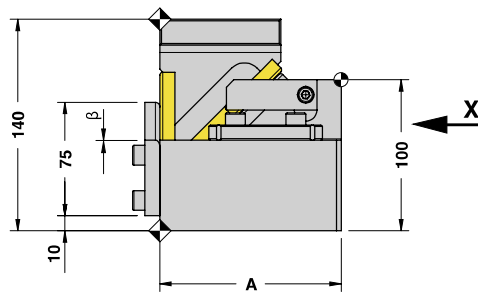
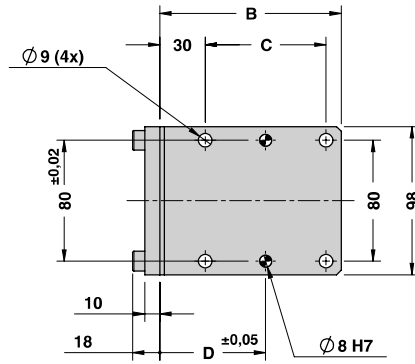
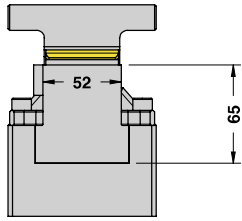
STOCK	ORDER EXAMPLE	Art.	Work Angle = 0°	Stroke = 40
		DHC052	00	40

OMCR CODE	Work Angle	Stroke (mm)	Overall Dimensions (mm)						
	β	S	A	B	C	D	E	F	G
DHC052.00.25	0°	25	120	120	80	70	40	40	80
DHC052.00.40	0°	40	135	135	95	80	50	45	90
DHC052.00.60	0°	60	180	180	140	55	70	55	110



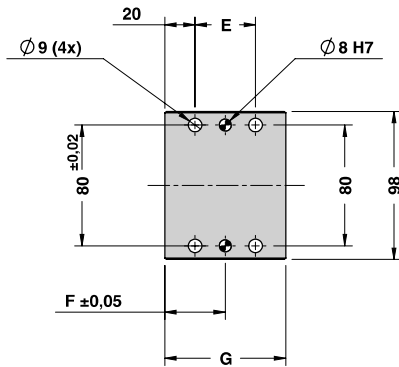
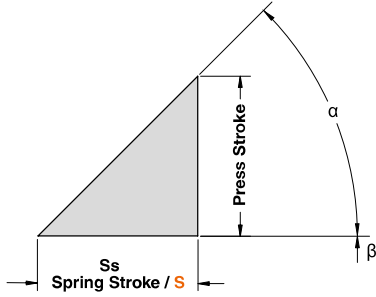
DIE MOUNTED CAM UNIT - HORIZONTALSCHIEBER - UNITÀ A CAMME A BASE STAMPO

X VIEW

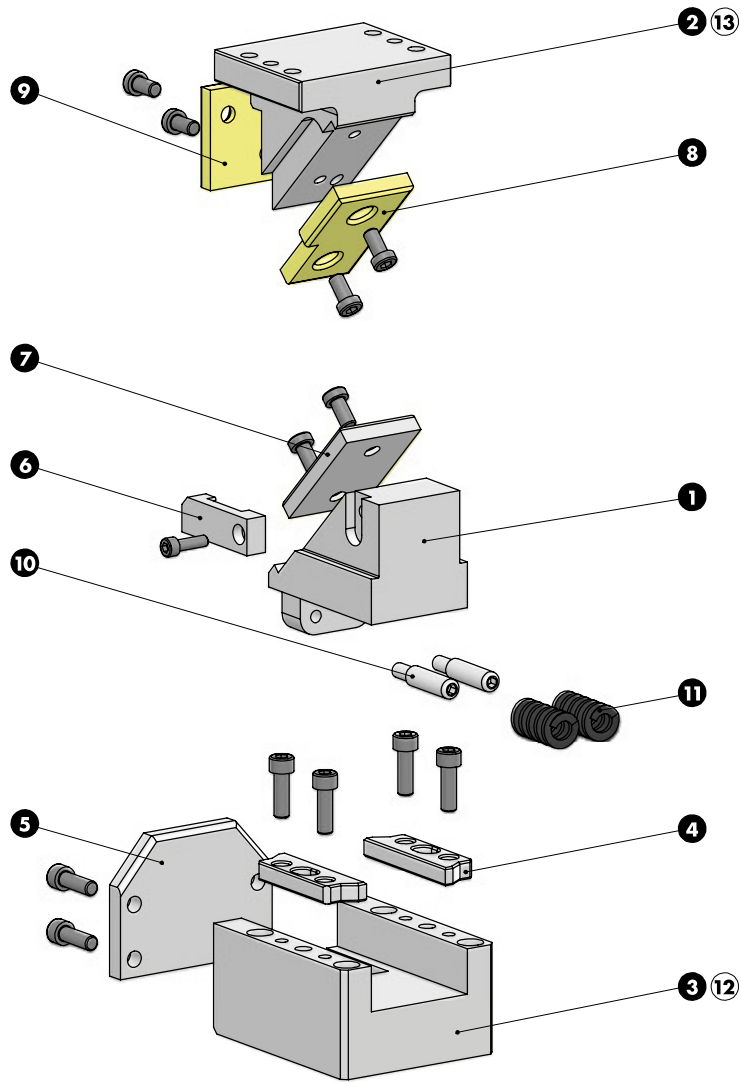


Cam Units DHC

CAM DIAGRAM



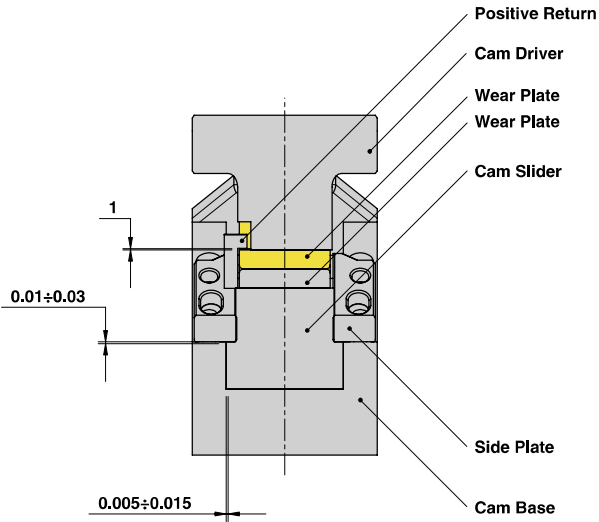
Work Angle	Inner Angle	Slider Work Stroke (mm)	Press Stroke (mm)	Spring Stroke (mm)
β	α	S	Ps	Ss
0°	45°	25	25	25
0°	45°	40	40	40
0°	45°	60	60	60





DIE MOUNTED CAM UNIT - HORIZONTALSCHIEBER - UNITÀ A CAMME A BASE STAMPO

SLIDER STRUCTURE, POSITIVE RETURN STRUCTURE AND CLEARANCES



Cam Units DHC

PART LIST

Particular number	Description	Material	Quantity
1	Cam Slider	GGG-50 + Graphite	1
2	Cam Driver	GG-25	1
3	Cam Base	GG-25	1
4	Side Plate	CK45	2
5	Stopper Plate	CK45	1
6	Positive Return	CK45	1
7	Wear Plate	CK45	1
8	Wear Plate	CuZn25Al5 + Graphite - HB > 190	1
9	Wear Plate	CuZn25Al5 + Graphite - HB > 190	1
10	Spring Guide Pin	CK45	2
11	Spring	-	2
12	Cam Base Fixing Screws M8x50 DIN 912	-	4
13	Cam Driver Fixing Screws M8x30 DIN 912	-	4