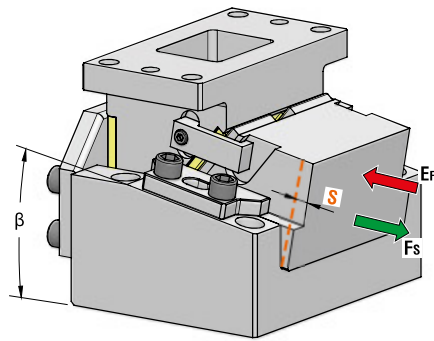




DIE MOUNTED CAM UNIT - HORIZONTALSCHIEBER - UNITÀ A CAMME A BASE STAMPO



P.605

OMCR CODE	Work Angle	Stroke (mm)	Max Work Force with shoulder (kN)	Extraction Force (kN)
	β	S	F _s	E _f Gas Spring
DHC150.00.40	0°	40	120	5,7
DHC150.00.60	0°	60	127	5,9
DHC150.05.45	5°	45	127	4,6
DHC150.05.70	5°	70	127	6,6
DHC150.10.45	10°	45	127	4,6
DHC150.10.70	10°	70	127	6,6
DHC150.15.45	15°	45	127	4,6
DHC150.15.70	15°	70	127	6,6
DHC150.20.45	20°	45	127	4,6
DHC150.20.70	20°	70	127	6,6

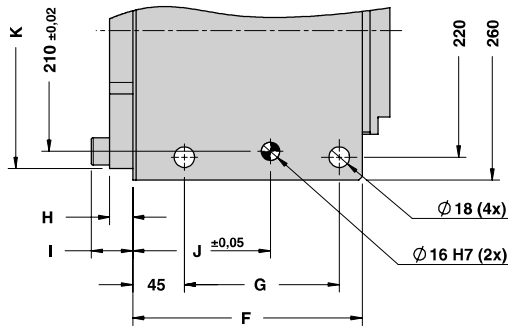
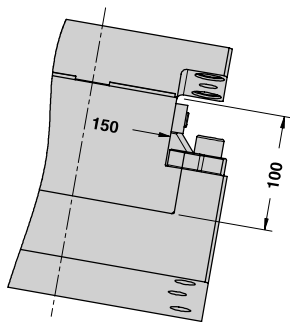
STOCK	ORDER EXAMPLE	Art.	Work Angle = 0°	Stroke = 60
		DHC150	00	60

OMCR CODE	Work Angle	Stroke (mm)	Overall Dimensions (mm)													
			β	S	A	B	C	D	E	F	G	H	I	J	K	L
DHC150.00.40	0°	40	190	170	45	100	220	190	125	19	35	105	250	80	60	120
DHC150.00.60	0°	60	210	170	45	100	220	200	135	19	35	110	250	100	70	140
DHC150.05.45	5°	45	193,01	158,50	30	125	220	190	125	20	36	105	240	70	55	110
DHC150.05.70	5°	70	217,92	166,32	40	125	220	200	135	20	36	120	240	90	65	130
DHC150.10.45	10°	45	199,55	151,36	40	125	220	190	125	20	36	105	240	70	55	110
DHC150.10.70	10°	70	224,17	152,02	40	125	220	200	135	20	36	120	240	90	65	130
DHC150.15.45	15°	45	204,58	143,71	40	125	220	190	125	20	36	105	240	80	60	120
DHC150.15.70	15°	70	228,73	152,24	55	125	230	200	135	20	36	120	240	100	70	140
DHC150.20.45	20°	45	208,05	135,70	40	125	220	190	125	20	36	105	240	80	60	120
DHC150.20.70	20°	70	231,54	137,15	55	125	230	200	135	20	36	120	240	100	70	140

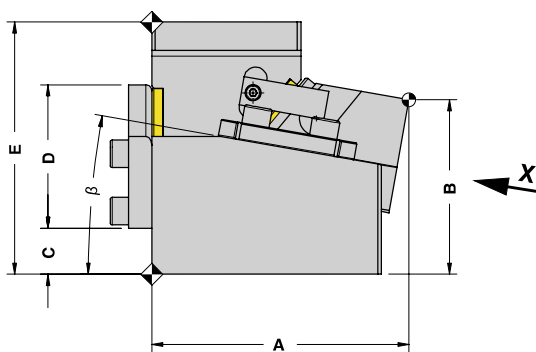
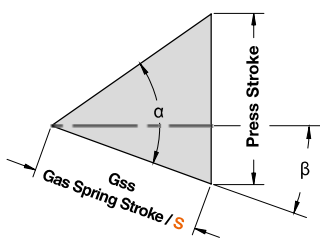


DIE MOUNTED CAM UNIT - HORIZONTALSCHIEBER - UNITÀ A CAMME A BASE STAMPO

X VIEW

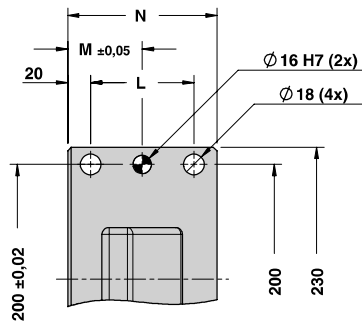


CAM DIAGRAM



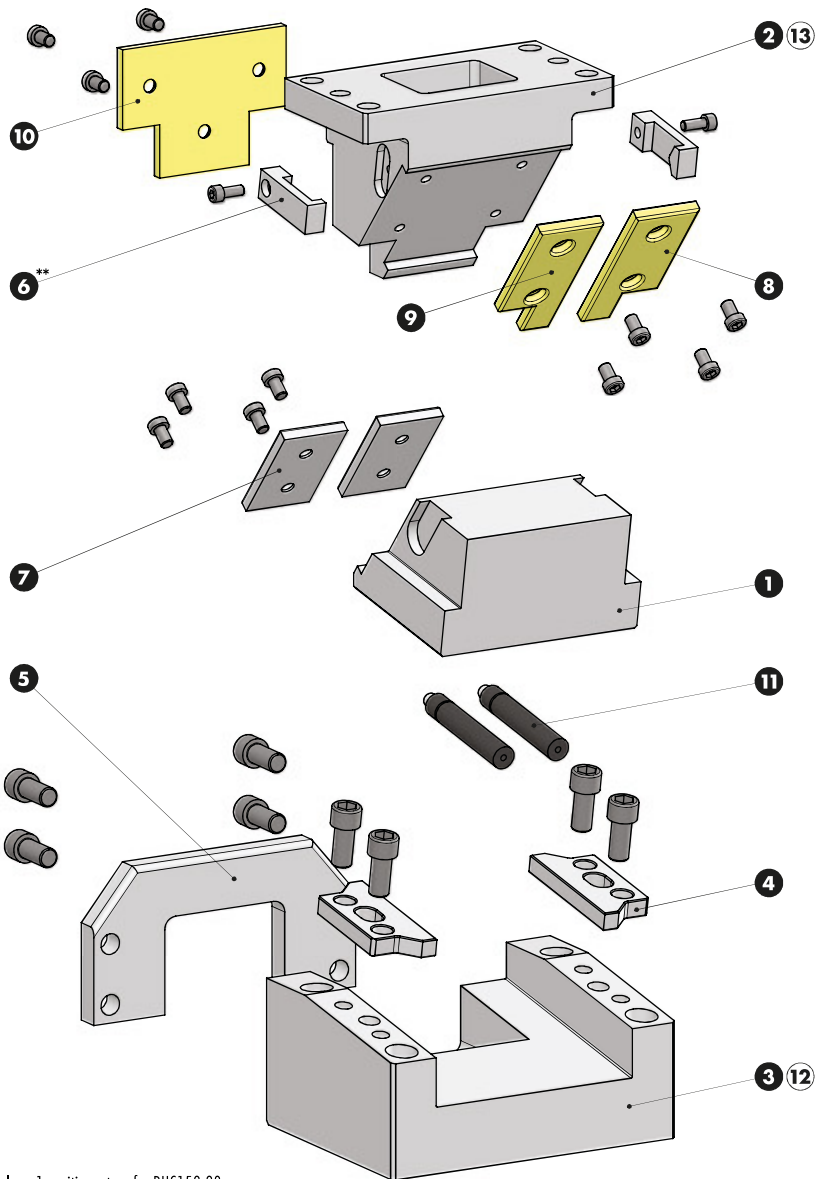
Cam Units DHC

Work Angle	Inner Angle	Slider Work Stroke (mm)	Press Stroke (mm)	Gas Spring Stroke (mm)
β	α	S	Ps	Gss
0°	45°	40	40	40
0°	45°	60	60	60
5°	60°	45	67,94	45
5°	60°	70	105,69	70
10°	60°	45	60,63	45
10°	60°	70	94,31	70
15°	60°	45	55,11	45
15°	60°	70	85,73	70
20°	60°	45	50,87	45
20°	60°	70	79,14	70





DIE MOUNTED CAM UNIT - HORIZONTALSCHIEBER - UNITÀ A CAMME A BASE STAMPO

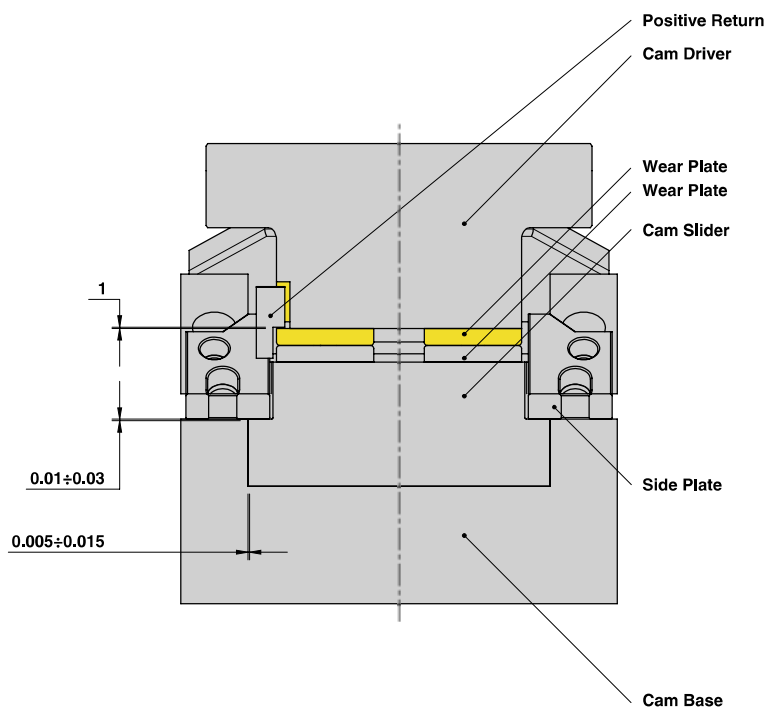


** Only nr.1 positive return for DHC150.00.
 DHC150.00 mit nur einer Zwangsrückholung.
 Solo un gancio di sicurezza per le DHC150.00.



DIE MOUNTED CAM UNIT - HORIZONTALSCHIEBER - UNITÀ A CAMME A BASE STAMPO

SLIDER STRUCTURE, POSITIVE RETURN STRUCTURE AND CLEARANCES



Cam Units DHC

PART LIST

Particular number	Description	Material	Quantity
1	Cam Slider	GGG-50 + Graphite	1
2	Cam Driver	GG-25	1
3	Cam Base	GG-25	1
4	Side Plate	CK45	2
5	Stopper Plate	CK45	1
6	Positive Return	CK45	2
7	Wear Plate	CK45	1
8	Wear Plate	CuZn25Al5 + Graphite - HB > 190	1
9	Wear Plate	CuZn25Al5 + Graphite - HB > 190	1
10	Wear Plate	CuZn25Al5 + Graphite - HB > 190	2
11	Gas Spring	-	2
12	Cam Base Fixing Screws M16x80 DIN 912	-	4
13	Cam Driver Fixing Screws M16x55 DIN 912	-	4