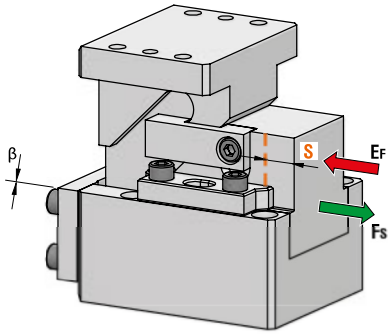
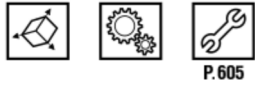


DIE MOUNTED CAM UNIT - HORIZONTALSCHIEBER - UNITÀ A CAMME A BASE STAMPO



| OMCR CODE | Work Angle | Stroke (mm) | Max Work Force with shoulder (kN) | Extraction Force (kN) |
|-------------------|------------|-------------|-----------------------------------|-----------------------|
| | β | S | F _s | E _f |
| DLC-DLCA052.00.25 | 0° | 25 | 30 | 0,62 |
| DLC-DLCA052.00.40 | 0° | 40 | 30 | 0,63 |
| DLC-DLCA052.00.60 | 0° | 60 | 30 | 0,65 |



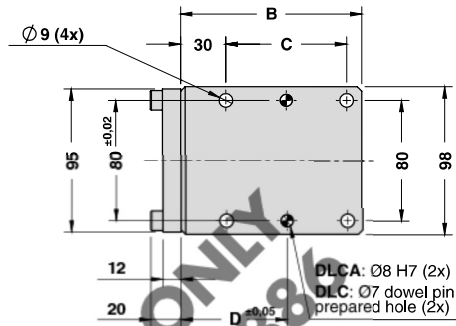
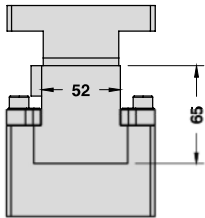
FOR REPLACEMENT ONLY
SEE DHC FROM PAGE 886
FOR NEW DIES

| | | | | |
|--|--|--------|-----------------|-------------|
| | | Art. | Work Angle = 0° | Stroke = 40 |
| | | DLC052 | 00 | 40 |

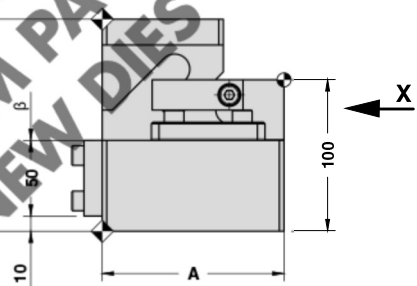
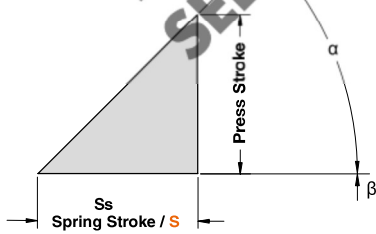
| OMCR CODE | | Work Angle | Stroke (mm) | Overall Dimensions (mm) | | | | | | |
|--------------|---------------|------------|-------------|-------------------------|-----|-----|----|----|----|-----|
| | | | | β | S | A | B | C | D | E |
| DLC052.00.25 | DLCA052.00.25 | 0° | 25 | 120 | 120 | 80 | 70 | 40 | 40 | 80 |
| DLC052.00.40 | DLCA052.00.40 | 0° | 40 | 135 | 135 | 95 | 80 | 50 | 45 | 90 |
| DLC052.00.60 | DLCA052.00.60 | 0° | 60 | 180 | 180 | 140 | 55 | 70 | 55 | 110 |

DIE MOUNTED CAM UNIT - HORIZONTALSCHIEBER - UNITÀ A CAMME A BASE STAMPO

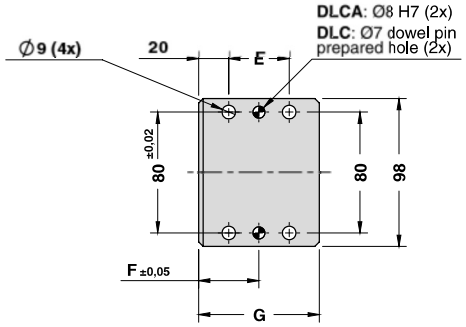
X VIEW



CAM DIAGRAM

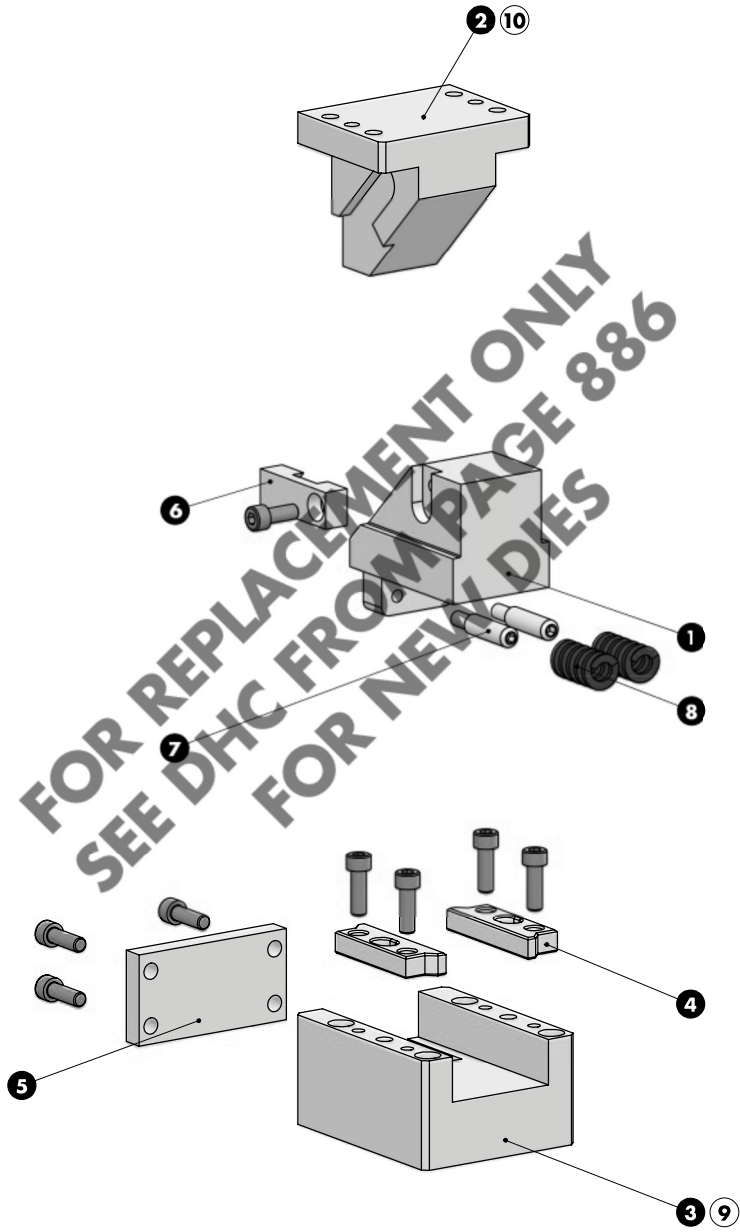


Cam Units
DLC/DLCA



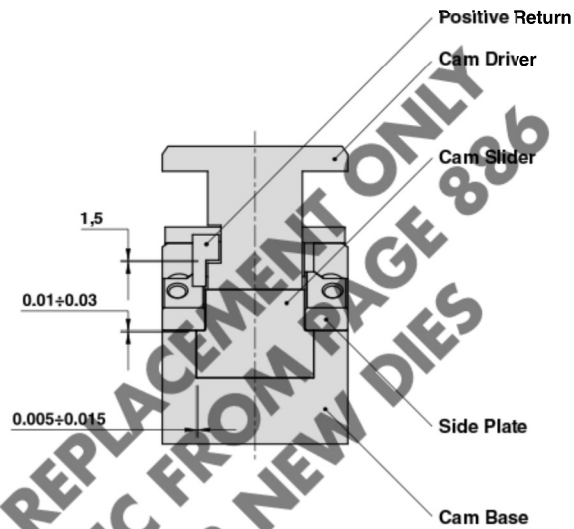
| Work Angle | Inner Angle | Slider Work Stroke (mm) | Press Stroke (mm) | Spring Stroke (mm) |
|------------|-------------|-------------------------|-------------------|--------------------|
| β | α | S | Ps | Ss |
| 0° | 45° | 25 | 25 | 25 |
| 0° | 45° | 40 | 40 | 40 |
| 0° | 45° | 60 | 60 | 60 |

DIE MOUNTED CAM UNIT - HORIZONTALSCHIEBER - UNITÀ A CAMME A BASE STAMPO



DIE MOUNTED CAM UNIT - HORIZONTALSCHIEBER - UNITÀ A CAMME A BASE STAMPO

SLIDER STRUCTURE, POSITIVE RETURN STRUCTURE AND CLEARANCES



Cam Units
DLC/DLCA

PART LIST

| Particular number | Description | Material | Quantity |
|-------------------|--|------------------|----------|
| 1 | Cam Slider | GG-25 + Graphite | 1 |
| 2 | Cam Driver | GG-25 + Graphite | 1 |
| 3 | Cam Base | GG-25 | 1 |
| 4 | Side Plate | CK45 | 2 |
| 5 | Stopper Plate | St44 | 1 |
| 6 | Positive Return | CK45 | 1 |
| 7 | Spring Guide Pin | CK45 | 2 |
| 8 | Spring | - | 2 |
| 9 | Cam Base Fixing Screws M8x50 DIN 912 | - | 4 |
| 10 | Cam Driver Fixing Screws M8x30 DIN 912 | - | 4 |