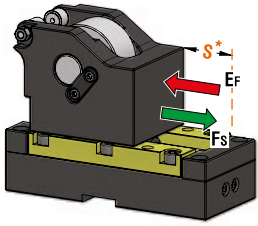


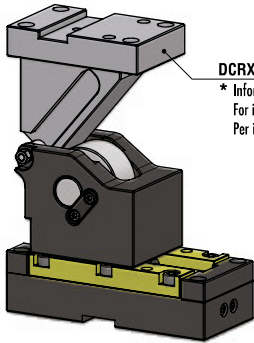
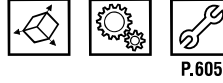


ROLLER CAM UNIT - ROLLENSCHIEBER - CAMMA A RULLO



OMCR CODE	Stroke (mm)	Max Work Force (kN)	Extraction Force (kN)
	S*	F _s	E _f
CRX01.030	30	45	2,5
CRX01.050	50	45	3,4

* Do not exceed the maximum stroke
Den maximalen Hub nicht überschreiten
Non superare la corsa massima



DCRX0100*
* Informationen zum Treiber siehe Seite 880
For info on cam driver see page 880
Per info sul cuneo vedi pagina 880

OPTION DRIVER	Work angle (β)
H15	-15°
H10	-10°
H05	-5°
000	0
L05	5°
L10	10°
L15	15°
L20	20°
L25	25°
L30	30°
L35	35°
L40	40°
L45	45°
L50	50°

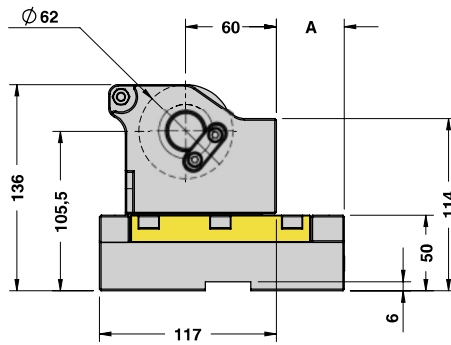
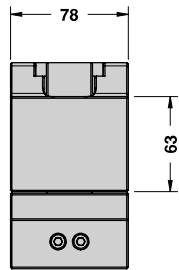
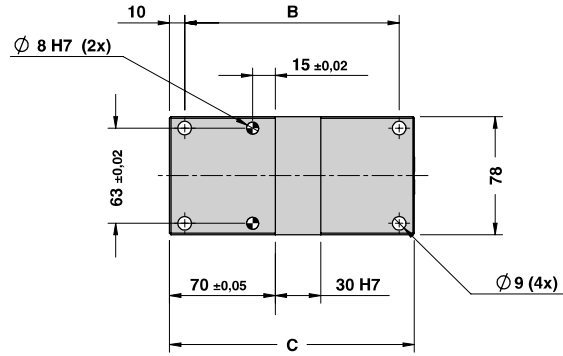
With Driver - **OPTION DRIVER**

STOCK	ORDER EXAMPLE	Art.	Stroke = 30	OPTION DRIVER
		CRX01	030	H05

OMCR CODE	Stroke (mm)	Overall Dimensions (mm)		
	S*	A	B	C
CRX01.030	30	45	142	162
CRX01.050	50	65	162	182



ROLLER CAM UNIT - ROLLENSCHIEBER - CAMMA A RULLO

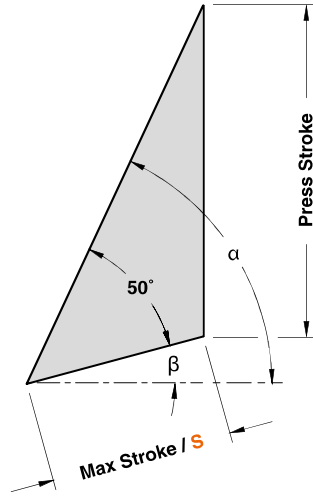
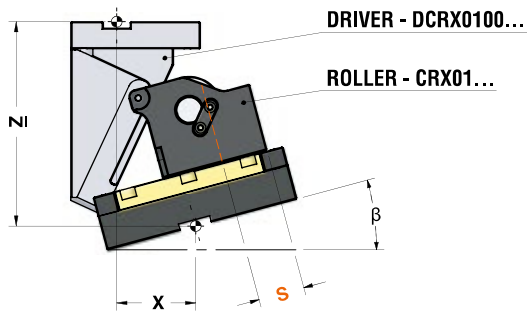


Cam Units CRX

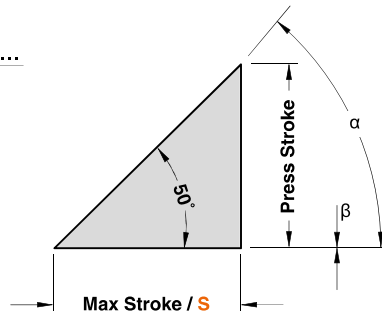
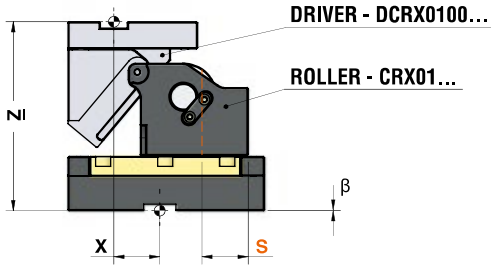


ROLLER CAM UNIT - ROLLENSCHIEBER - CAMMA A RULLO

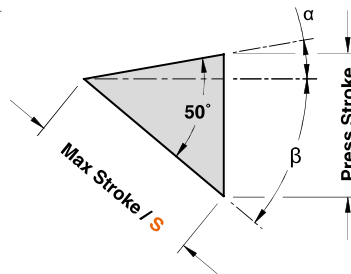
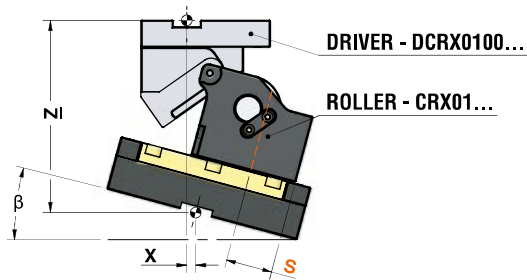
WORK ANGLE (β) FROM -5° TO -15°



WORK ANGLE (β)= 0°



WORK ANGLE (β) FROM 5° TO 50°




ROLLER CAM UNIT - ROLLENSCHIEBER - CAMMA A RULLO

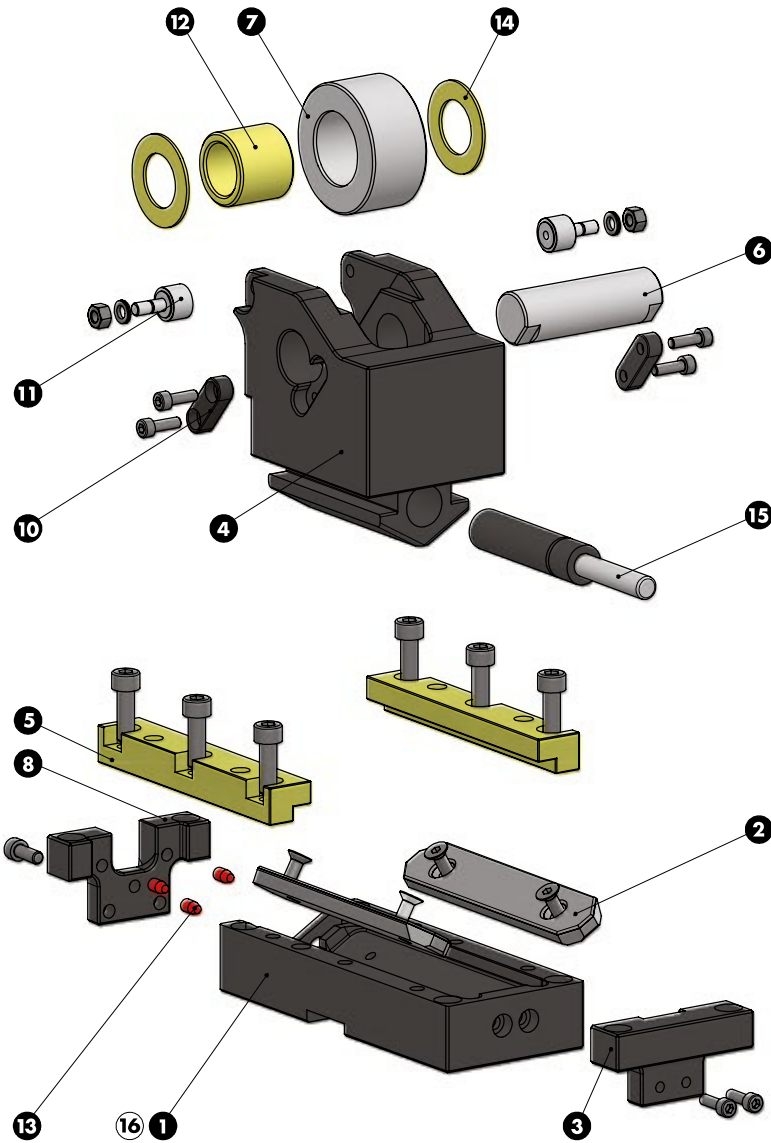
*For more info see page 850 / Weitere Informationen finden Sie auf der Seite 850 / Per maggiori informazioni consultare la pagina 850

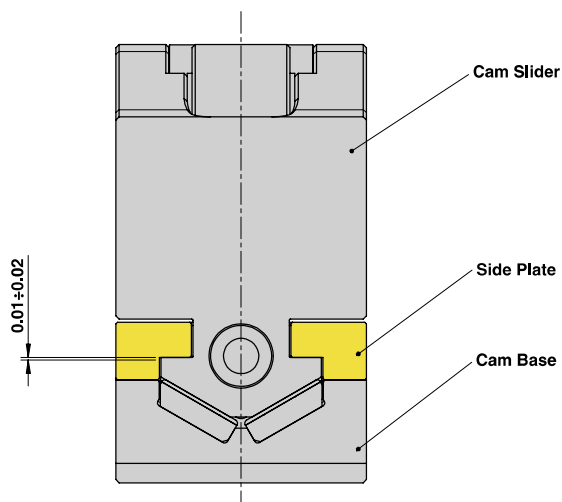
ROLLER CAM CODE	Work Angle β	α	Max Stroke S (mm)	Press Stroke (mm)	*CAM DRIVER CODE	X (mm)	Z (mm)
CRX01.030	-15°	65°	30	54,4	DCRX0100.30.H15	73,20	175,60
	-10°	60°	30	46,0	DCRX0100.30.H10	63,49	174,00
	-5°	55°	30	40,1	DCRX0100.30.H05	53,23	169,90
	0°	50°	30	35,8	DCRX0100.30.000	42,50	175,00
	5°	45°	30	32,5	DCRX0100.30.L05	31,37	172,50
	10°	40°	30	30,0	DCRX0100.30.L10	19,93	175,00
	15°	35°	30	28,1	DCRX0100.30.L15	8,27	176,94
	20°	30°	30	26,5	DCRX0100.30.L20	-3,52	178,46
	25°	25°	30	25,4	DCRX0100.30.L25	-15,36	174,64
	30°	20°	30	24,5	DCRX0100.30.L30	-27,15	173,54
	35°	15°	30	23,8	DCRX0100.30.L35	-38,80	171,21
	40°	10°	30	23,3	DCRX0100.30.L40	-50,23	166,66
	45°	5°	30	23,1	DCRX0100.30.L45	-61,35	161,93
50°	0°	30	23,0	DCRX0100.30.L50	-72,07	157,02	
CRX01.050	-15°	65°	50	90,6	DCRX0100.50.H15	73,20	189,37
	-10°	60°	50	76,6	DCRX0100.50.H10	63,49	183,40
	-5°	55°	50	66,8	DCRX0100.50.H05	53,23	188,22
	0°	50°	50	59,6	DCRX0100.50.000	42,50	175,00
	5°	45°	50	54,2	DCRX0100.50.L05	31,37	179,83
	10°	40°	50	50,0	DCRX0100.50.L10	19,93	175,00
	15°	35°	50	46,8	DCRX0100.50.L15	8,27	178,24
	20°	30°	50	44,2	DCRX0100.50.L20	-3,52	175,77
	25°	25°	50	42,3	DCRX0100.50.L25	-15,36	172,74
	30°	20°	50	40,8	DCRX0100.50.L30	-27,15	169,24
	35°	15°	50	39,7	DCRX0100.50.L35	-38,80	170,35
	40°	10°	50	38,9	DCRX0100.50.L40	-50,23	161,11
	45°	5°	50	38,4	DCRX0100.50.L45	-61,35	156,55
50°	0°	50	38,3	DCRX0100.50.L50	-72,07	151,70	

Cam Units CRX



ROLLER CAM UNIT - ROLLENSCHIEBER - CAMMA A RULLO




ROLLER CAM UNIT - ROLLENSCHIEBER - CAMMA A RULLO
SLIDER STRUCTURE AND CLEARANCES


Cam Units CRX

PART LIST

Particular number	Description	Material	Quantity
1	Cam Base	CK45	1
2	Wear Plate	St42 + Syntered layer	2
3	Spring Stopper Plate	CK45	1
4	Cam Slider	CK45	1
5	Side Plate	CuZn25Al5 + Graphite - HB > 190	2
6	Pin	16NiCrMo4	1
7	Roller	100Cr6	1
8	Stopper Plate	CK45	2
10	Key	CK45	2
11	Roller KRV16PPA	CK45	2
12	Self-Lubricating Bush	CuZn25Al5 + Graphite - HB > 190	1
13	Elastomer Cap	Elastomer 92SH	3
14	Washer PCMW 264401.5M	-	2
15	Gas Spring	-	1
16	Cam Base Fixing Screws M8x30 DIN 912	-	4