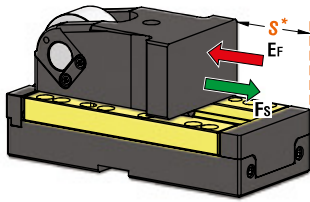
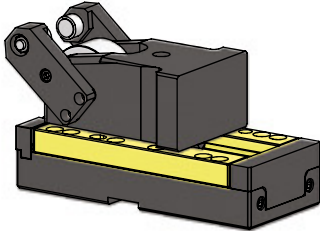




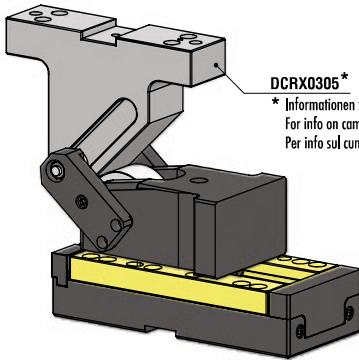
ROLLER CAM UNIT - ROLLENSCHIEBER - CAMMA A RULLO



Without Positive Return - **OPTION K**



With Positive Return - **OPTION P**



With Driver - **OPTION DRIVER**

DCRX0305*

* Informationen zum Treiber siehe Seite 882
For info on cam driver see page 882
Per info sul cuneo vedi pagina 882

OMCR CODE	Stroke (mm)	Max Work Force (kN)	Extraction Force (kN)
	S*	F _s	E _f Gas Spring
CRX03.050	50	76	3,4
CRX03.080	80	76	3,4
CRX03.100	100	76	3,6

* Do not exceed the maximum stroke
Den maximalen Hub nicht überschreiten
Non superare la corsa massima



P.605

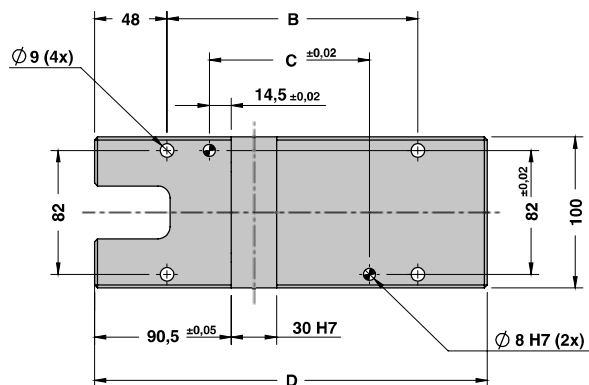
OPTION DRIVER	Work angle (β)
H15	-15°
H10	-10°
H05	-5°
000	0
L05	5°
L10	10°
L15	15°
L20	20°
L25	25°
L30	30°
L35	35°
L40	40°
L45	45°
L50	50°

STOCK	ORDER EXAMPLE	Art.	Stroke = 80	OPTION K-P	OPTION DRIVER
		CRX03	080	K	H05

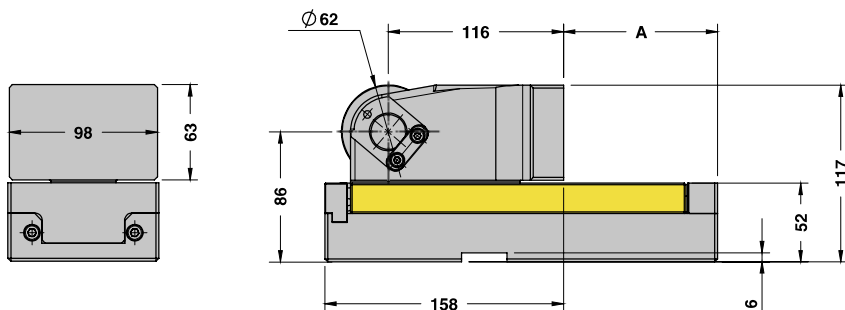
OMCR CODE	Stroke (mm)	Overall Dimensions (mm)				
	S*	A	B	C	D	E
CRX03.050	50	42	116	56	200	212
CRX03.080	80	72	146	86	230	242
CRX03.100	100	102	166	106	260	272



ROLLER CAM UNIT - ROLLENSCHIEBER - CAMMA A RULLO

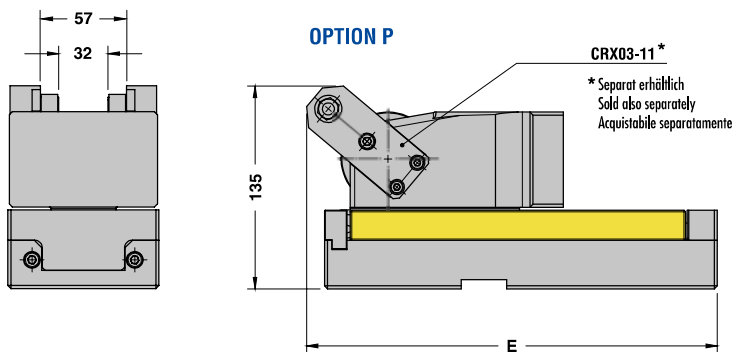


OPTION K



Cam Units CRX

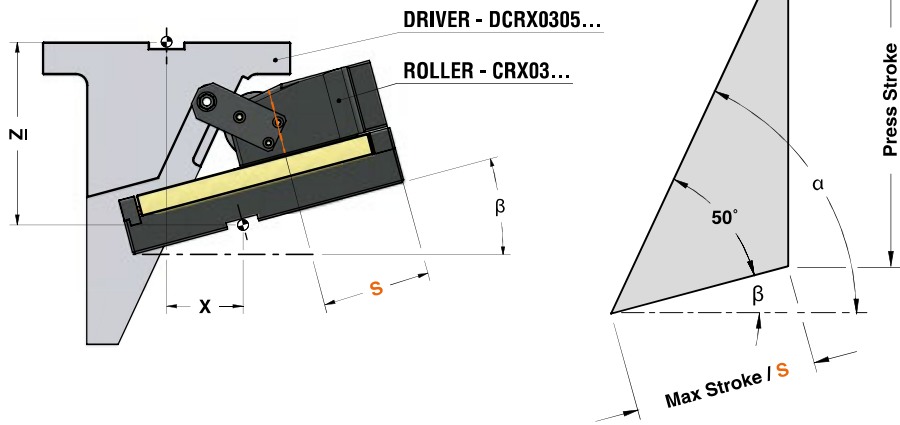
OPTION P



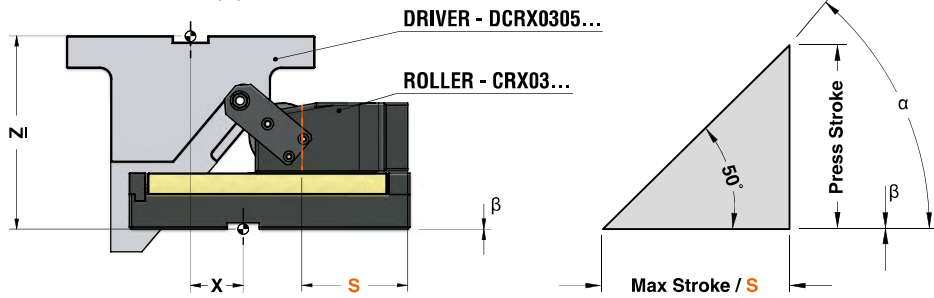


ROLLER CAM UNIT - ROLLENSCHIEBER - CAMMA A RULLO

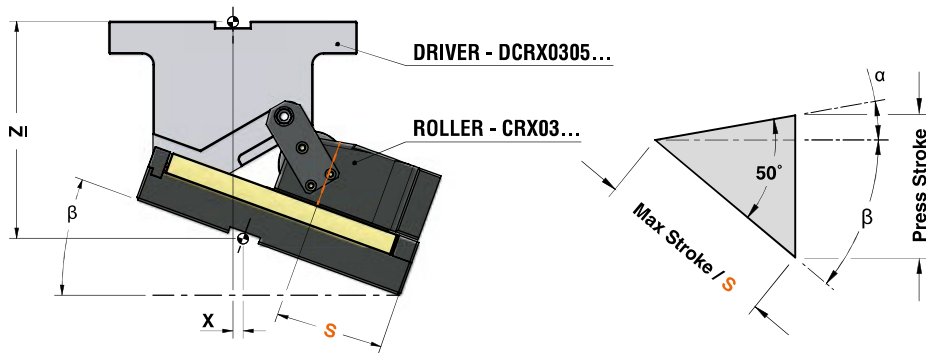
WORK ANGLE (β) FROM -5° TO -15°



WORK ANGLE (β)= 0°



WORK ANGLE (β) FROM 5° TO 50°




ROLLER CAM UNIT - ROLLENSCHIEBER - CAMMA A RULLO

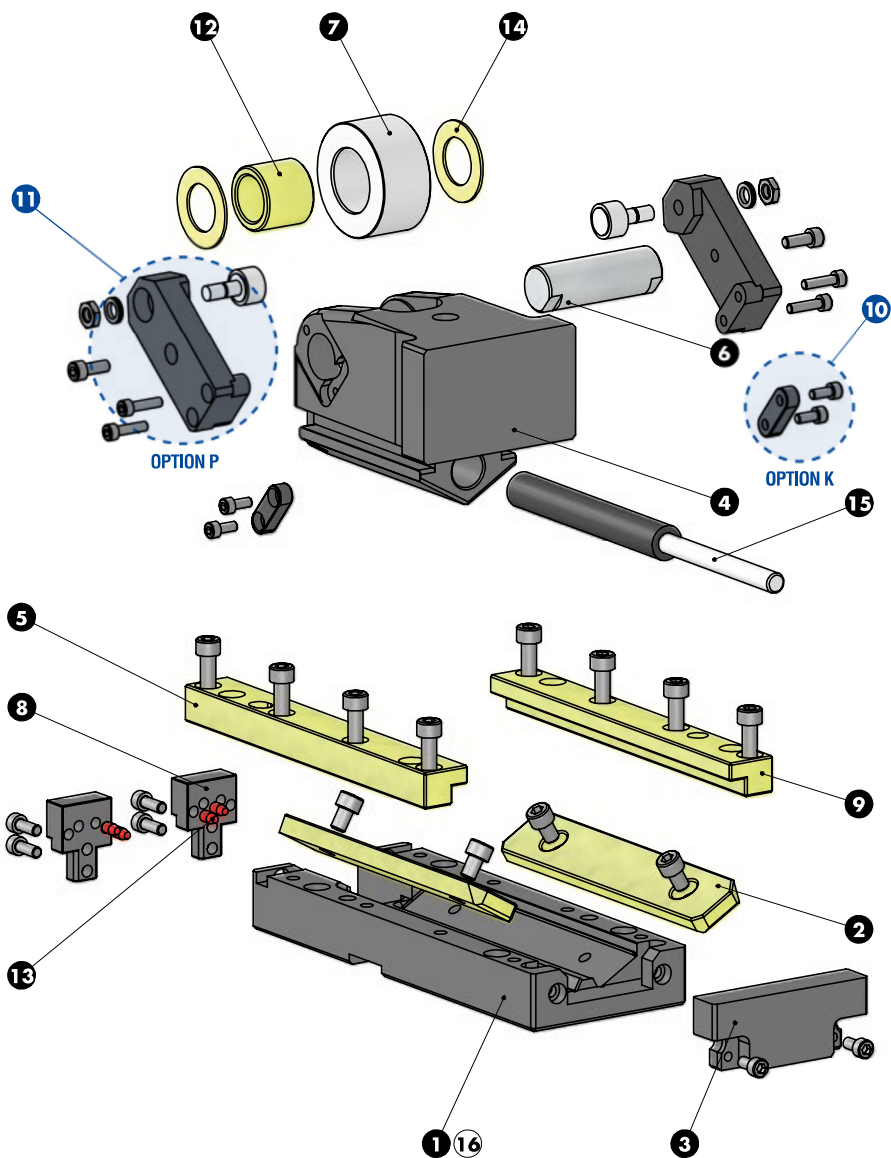
*For more info see page 856 / Weitere Informationen finden Sie auf der Seite 856 / Per maggiori informazioni consultare la pagina 856

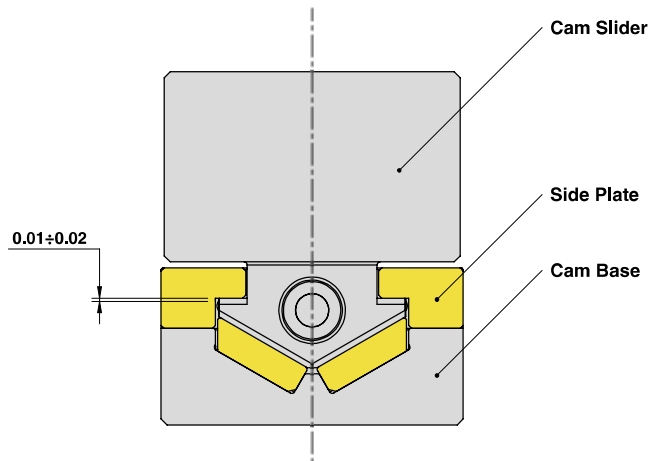
ROLLER CAM CODE	Work Angle β	α	Max Stroke S (mm)	Press Stroke (mm)	*CAM DRIVER CODE	X (mm)	Z (mm)
CRX03.050	-15°	65°	50	90,63	DCRX0305.50.H15	95,92	165,04
	-10°	60°	50	76,60	DCRX0305.50.H10	89,32	168,90
	-5°	55°	50	66,78	DCRX0305.50.H05	81,88	177,95
	0°	50°	50	59,59	DCRX0305.50.000	73,68	183,68
	5°	45°	50	54,17	DCRX0305.50.L05	64,75	186,89
	10°	40°	50	50,00	DCRX0305.50.L10	55,19	193,04
	15°	35°	50	46,76	DCRX0305.50.L15	45,05	197,40
	20°	30°	50	44,23	DCRX0305.50.L20	34,42	200,15
	25°	25°	50	42,26	DCRX0305.50.L25	23,37	196,39
	30°	20°	50	40,76	DCRX0305.50.L30	11,99	191,18
	35°	15°	50	39,65	DCRX0305.50.L35	0,37	189,57
	40°	10°	50	38,89	DCRX0305.50.L40	-11,40	186,60
45°	5°	50	38,45	DCRX0305.50.L45	-23,25	182,27	
50°	0°	50	38,30	DCRX0305.50.L50	-35,06	176,62	
CRX03.080	-15°	65°	80	145,01	DCRX0305.80.H15	70,92	205,66
	-10°	60°	80	122,57	DCRX0305.80.H10	64,32	207,94
	-5°	55°	80	106,84	DCRX0305.80.H05	56,88	202,88
	0°	50°	80	95,34	DCRX0305.80.000	48,68	202,93
	5°	45°	80	86,67	DCRX0305.80.L05	39,75	199,39
	10°	40°	80	80,00	DCRX0305.80.L10	30,19	208,04
	15°	35°	80	74,81	DCRX0305.80.L15	20,05	214,35
	20°	30°	80	70,76	DCRX0305.80.L20	9,42	218,61
	25°	25°	80	67,62	DCRX0305.80.L25	-1,63	216,03
	30°	20°	80	65,22	DCRX0305.80.L30	-13,01	211,20
	35°	15°	80	63,45	DCRX0305.80.L35	-24,63	200,78
	40°	10°	80	62,23	DCRX0305.80.L40	-36,40	188,26
45°	5°	80	61,52	DCRX0305.80.L45	-48,25	179,21	
50°	0°	80	61,28	DCRX0305.80.L50	-60,06	168,64	
CRX03.100	-15°	65°	100	181,26	DCRX0305.80.H15	70,92	169,41
	-10°	60°	100	153,21	DCRX0305.80.H10	64,32	177,30
	-5°	55°	100	133,56	DCRX0305.80.H05	56,88	176,17
	0°	50°	100	119,18	DCRX0305.80.000	48,68	179,09
	5°	45°	100	108,34	DCRX0305.80.L05	39,75	177,72
	10°	40°	100	100,00	DCRX0305.80.L10	30,19	188,04
	15°	35°	100	93,52	DCRX0305.80.L15	20,05	195,65
	20°	30°	100	88,46	DCRX0305.80.L20	9,42	200,92
	25°	25°	100	84,52	DCRX0305.80.L25	-1,63	199,12
	30°	20°	100	81,52	DCRX0305.80.L30	-13,01	195,42
	35°	15°	100	79,31	DCRX0305.80.L35	-24,63	184,92
	40°	10°	100	77,79	DCRX0305.80.L40	-36,40	172,70
45°	5°	100	76,90	DCRX0305.80.L45	-48,25	163,83	
50°	0°	100	76,60	DCRX0305.80.L50	-60,06	153,32	

Cam Units CRX



ROLLER CAM UNIT - ROLLENSCHIEBER - CAMMA A RULLO




ROLLER CAM UNIT - ROLLENSCHIEBER - CAMMA A RULLO
SLIDER STRUCTURE AND CLEARANCES


Cam Units CRX

PART LIST

Particular number	Description	Material	Quantity
1	Cam Base	CK45	1
2	Wear Plate	CuZn25Al5 + Graphite - HB > 190	2
3	Spring Stopper Plate	CK45	1
4	Cam Slider	CK45	1
5	Side Plate L	CuZn25Al5 + Graphite - HB > 190	1
6	Pin	16NiCrMo4	1
7	Roller	100Cr6	1
8	Stopper Plate	CK45	2
9	Side Plate R	CuZn25Al5 + Graphite - HB > 190	1
10	Key - OPTION K	CK45	2
11	Positive Return + Roller KRV19PPA - OPTION P	CK45	2
12	Self-Lubricating Bush	CuZn25Al5 + Graphite - HB > 190	1
13	Elastomer Cap	Elastomer 92SH	4
14	Washer PCMW 264401.5M	-	2
15	Gas Spring	-	1
16	Cam Base Fixing Screws M8x30 DIN 912	-	4