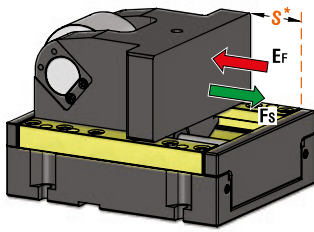




ROLLER CAM UNIT - ROLLENSCHIEBER - CAMMA A RULLO



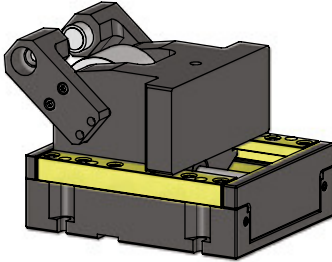
Without Positive Return - **OPTION K**

OMCR CODE	Stroke (mm)	Max Work Force (kN)	Extraction Force (kN)
			$E_f$
	$S^*$	$F_s$	Gas Spring
CRX20.050	50	258	9,29
CRX20.080	80	258	9,36
CRX20.100	100	258	9,38

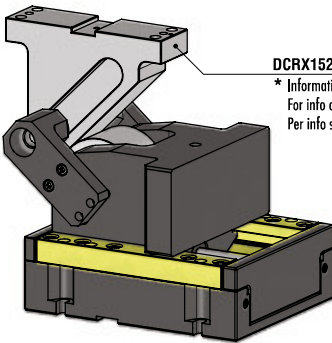
\* Do not exceed the maximum stroke  
Den maximalen Hub nicht überschreiten  
Non superare la corsa massima



P.605



With Positive Return - **OPTION P**



DCRX1520\*  
\* Informationen zum Treiber siehe Seite 884  
For info on cam driver see page 884  
Per info sul cuneo vedi pagina 884

With Driver - **OPTION DRIVER**

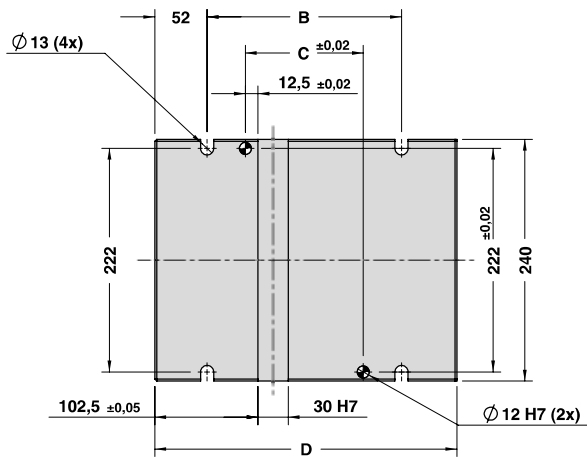
OPTION DRIVER	Work angle ( $\beta$ )
H15	-15°
H10	-10°
H05	-5°
000	0
L05	5°
L10	10°
L15	15°
L20	20°
L25	25°
L30	30°
L35	35°
L40	40°
L45	45°
L50	50°

STOCK	ORDER EXAMPLE	Art.	Stroke = 80	OPTION K-P	OPTION DRIVER
		CRX20	080	K	H05

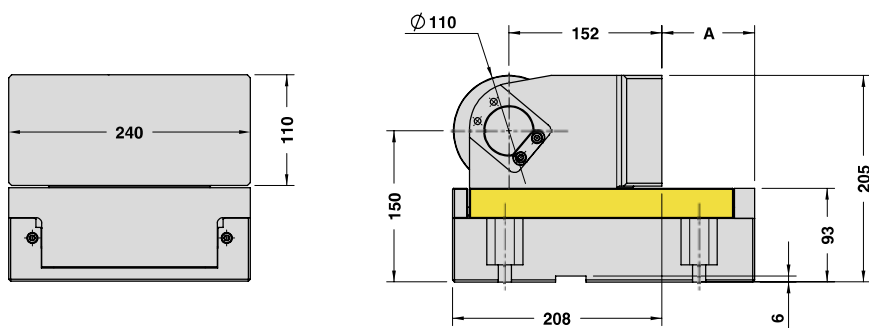
OMCR CODE	Stroke (mm)	Overall Dimensions (mm)				
		$S^*$	A	B	C	D
CRX20.050	50	42	143	67	250	290
CRX20.080	80	72	173	97	280	320
CRX20.100	100	92	193	117	300	340



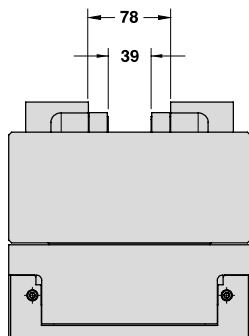
ROLLER CAM UNIT - ROLLENSCHIEBER - CAMMA A RULLO



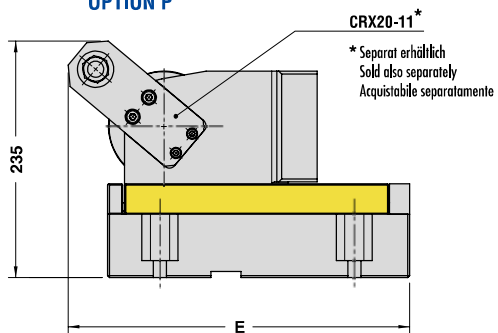
OPTION K



Cam Units CRX



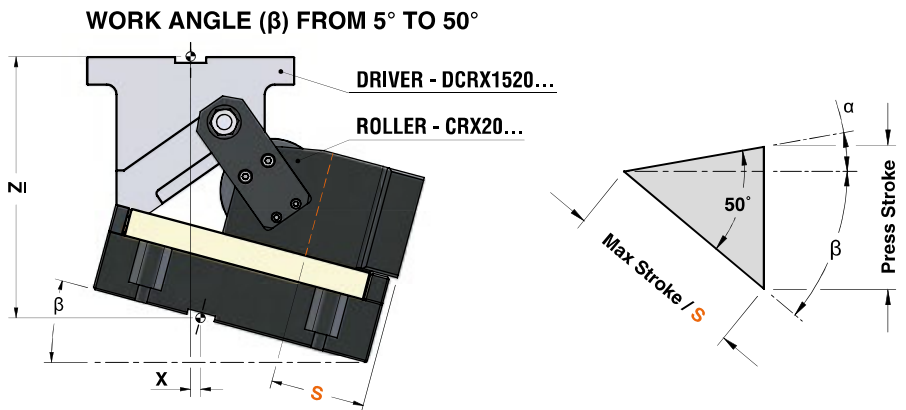
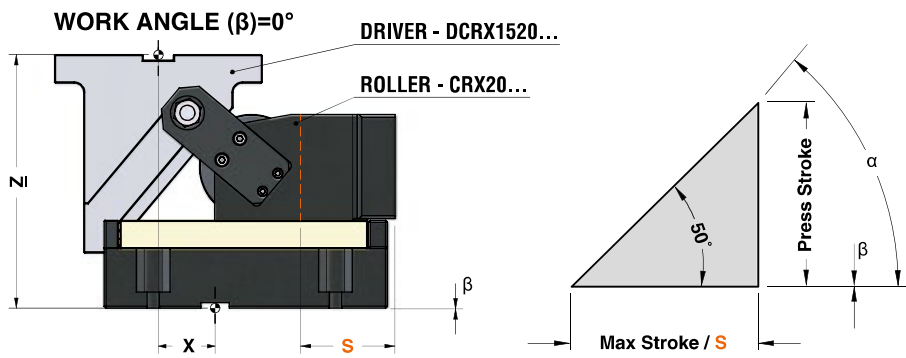
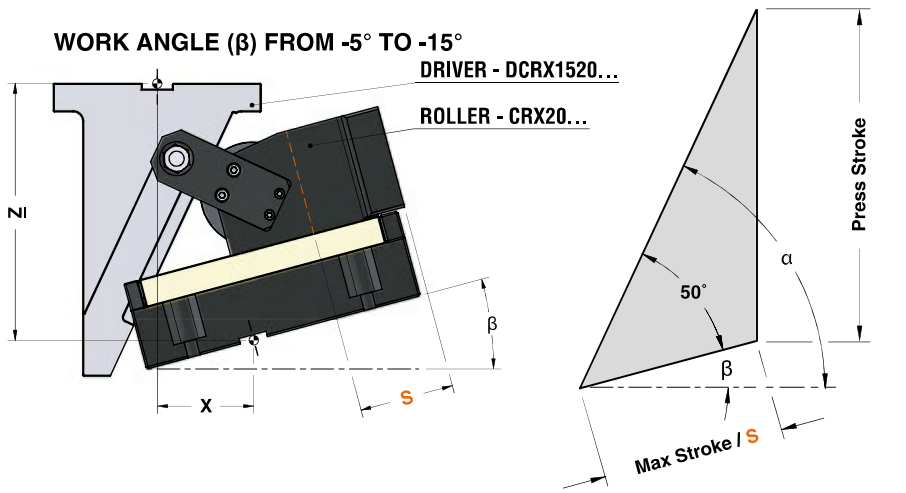
OPTION P



CRX20-11\*  
\* Separat erhältlich  
Sold also separately  
Acquistabile separatamente



ROLLER CAM UNIT - ROLLENSCHIEBER - CAMMA A RULLO





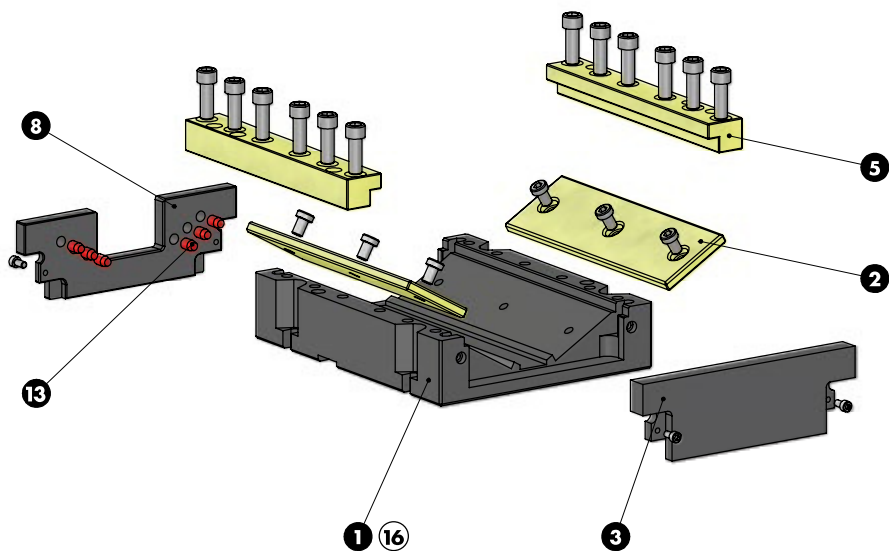
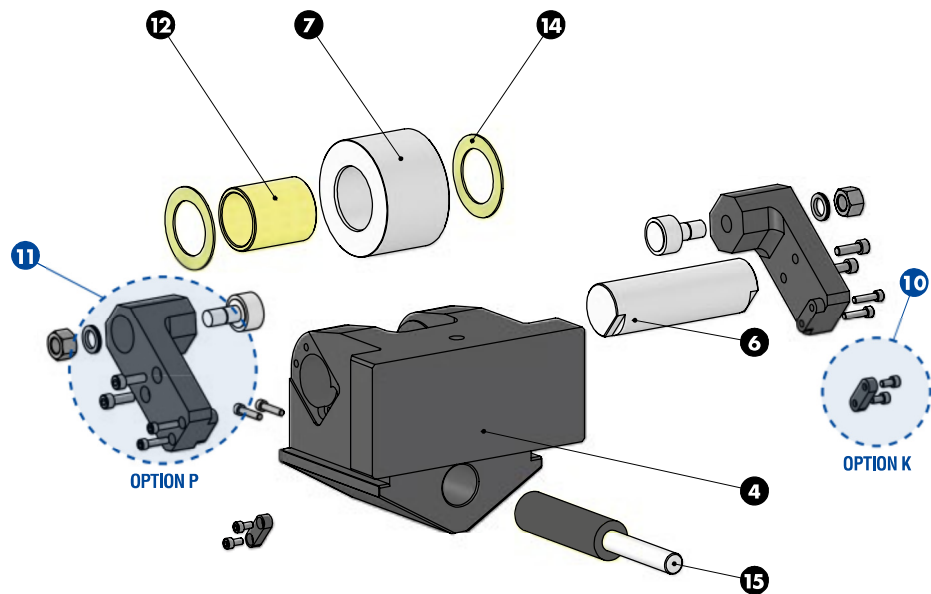
## ROLLER CAM UNIT - ROLLENSCHIEBER - CAMMA A RULLO

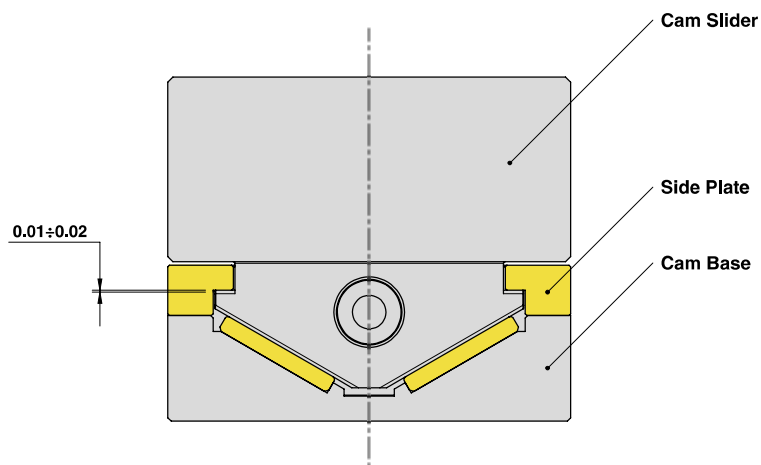
ROLLER CAM CODE	Work Angle $\beta$	$\alpha$	Max Stroke S (mm)	Press Stroke (mm)	*CAM DRIVER CODE	X (mm)	Z (mm)
CRX20.050	-15°	65°	50	90,63	DCRX1520.50.H15	127,30	252,52
	-10°	60°	50	76,60	DCRX1520.50.H10	114,24	254,27
	-5°	55°	50	66,78	DCRX1520.50.H05	100,12	255,64
	0°	50°	50	59,59	DCRX1520.50.000	85,06	263,10
	5°	45°	50	54,17	DCRX1520.50.L05	69,15	267,44
	10°	40°	50	50,00	DCRX1520.50.L10	52,53	274,10
	15°	35°	50	46,76	DCRX1520.50.L15	35,31	278,36
	20°	30°	50	44,23	DCRX1520.50.L20	17,64	280,39
	25°	25°	50	42,26	DCRX1520.50.L25	-0,34	275,29
	30°	20°	50	40,76	DCRX1520.50.L30	-18,53	268,15
	35°	15°	50	39,65	DCRX1520.50.L35	-36,76	264,03
	40°	10°	50	38,89	DCRX1520.50.L40	-54,90	257,97
	45°	5°	50	38,45	DCRX1520.50.L45	-72,82	250,02
50°	0°	50	38,30	DCRX1520.50.L50	-90,37	240,22	
CRX20.080	-15°	65°	80	145,01	DCRX1520.80.H15	102,30	308,14
	-10°	60°	80	122,57	DCRX1520.80.H10	89,24	293,31
	-5°	55°	80	106,84	DCRX1520.80.H05	75,13	290,58
	0°	50°	80	95,34	DCRX1520.80.000	60,06	292,35
	5°	45°	80	86,67	DCRX1520.80.L05	44,15	284,94
	10°	40°	80	80,00	DCRX1520.80.L10	27,53	294,11
	15°	35°	80	74,81	DCRX1520.80.L15	10,32	295,31
	20°	30°	80	70,76	DCRX1520.80.L20	-7,35	298,86
	25°	25°	80	67,62	DCRX1520.80.L25	-25,35	289,94
	30°	20°	80	65,22	DCRX1520.80.L30	-43,53	288,70
	35°	15°	80	63,45	DCRX1520.80.L35	-61,76	270,24
	40°	10°	80	62,23	DCRX1520.80.L40	-79,91	259,64
	45°	5°	80	61,52	DCRX1520.80.L45	-97,82	246,95
50°	0°	80	61,28	DCRX1520.80.L50	-115,38	232,25	
CRX20.100	-15°	65°	100	181,26	DCRX1520.80.H15	102,30	271,89
	-10°	60°	100	153,21	DCRX1520.80.H10	89,24	262,67
	-5°	55°	100	133,56	DCRX1520.80.H05	75,12	263,86
	0°	50°	100	119,18	DCRX1520.80.000	60,06	268,51
	5°	45°	100	108,34	DCRX1520.80.L05	44,15	263,27
	10°	40°	100	100,00	DCRX1520.80.L10	27,53	274,10
	15°	35°	100	93,52	DCRX1520.80.L15	10,31	276,60
	20°	30°	100	88,46	DCRX1520.80.L20	-7,35	281,16
	25°	25°	100	84,52	DCRX1520.80.L25	-25,34	273,03
	30°	20°	100	81,52	DCRX1520.80.L30	-43,53	272,39
	35°	15°	100	79,31	DCRX1520.80.L35	-61,76	254,37
	40°	10°	100	77,79	DCRX1520.80.L40	-79,90	244,07
	45°	5°	100	76,90	DCRX1520.80.L45	-97,82	231,57
50°	0°	100	76,60	DCRX1520.80.L50	-115,37	216,92	

Cam Units CRX



ROLLER CAM UNIT - ROLLENSCHIEBER - CAMMA A RULLO




**ROLLER CAM UNIT - ROLLENSCHIEBER - CAMMA A RULLO**
**SLIDER STRUCTURE AND CLEARANCES**


Cam Units CRX

**PART LIST**

Particular number	Description	Material	Quantity
1	Cam Base	CK45	1
2	Wear Plate	CuZn25Al5 + Graphite - HB > 190	2
3	Gas Spring Stopper Plate	CK45	1
4	Cam Slider	CK45	1
5	Side Plate	CuZn25Al5 + Graphite - HB > 190	2
6	Pin	16NiCrMo4	1
7	Roller	100Cr6	1
8	Stopper Plate	CK45	1
10	Key - <b>OPTION K</b>	CK45	2
11	Positive Return + Roller KRV35PPA - <b>OPTION P</b>	CK45	2
12	Self-Lubricating Bush	CuZn25Al5 + Graphite - HB > 190	1
13	Elastomer Cap	Elastomer 92SH	6
14	Washer PCMW 52780.2M	-	2
15	Gas Spring	-	1
16	Cam Base Fixing Screws M12x35 DIN 912	-	4