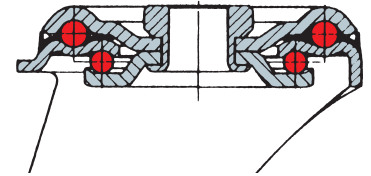


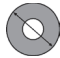





solid rubber electrically conductive // standard housing IS, IL // up to 295 kg

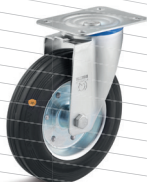


Features:

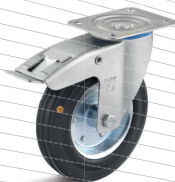
- castor series IL:
- steel sheet housing, galvanized
- fork head with double ball bearing
- seal with integrated ball spacer
- (old designation: LCW)



swivel castors	swivel castors with double brake	 wheel ø mm	 wheel width mm	 height mm	 projection, swivel castor mm	 bolt hole ø mm	 load-carrying capacity kg
L-IL-SGS-080-R-1-EC ID: 0030543	L-IL-SGS-080-R-1-DSN-EC ID: 0030548	80	30	100	36	12	50
L-IL-SGS-100-R-1-EC ID: 0030544	L-IL-SGS-100-R-1-DSN-EC ID: 0030549	100	30	125	38	12	70
L-IL-SGS-125-R-1-EC ID: 0030545	L-IL-SGS-125-R-1-DSN-EC ID: 0030550	125	38	155	38	12	100
L-IL-SGS-160-R-1-EC ID: 0030546	L-IL-SGS-160-R-1-DSN-EC ID: 0030551	160	38	190	52	16.5	135
L-IL-SGS-200-R-1-EC ID: 0030547	L-IL-SGS-200-R-1-DSN-EC ID: 0030552	200	50	235	53	17	205



-3 (plate)



3-DSN (plate+ double brake)

Matching accessories can be found on page 432