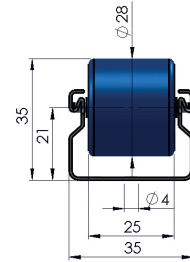
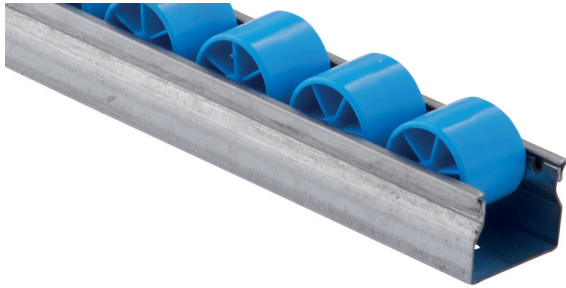


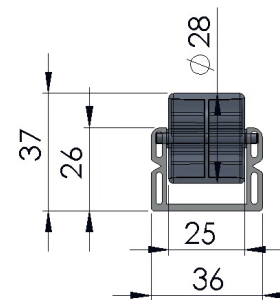
## Roller rails for freezer applications down to -30° C



### Advantages:

- polyethylene rollers can be used for cold applications because they do not break when struck
- increased resistance to twisting and bending
- vertical load capacity of up to 40 kg for each roller under a horizontal load

## Roller rail, germ-free



### Advantages:

- roller made from non-colored polypropylene
- U-profile made of extruded, white plastic with no added coloring
- stainless steel axle
- for use in sterile rooms with rolling transport of conveyed goods to a sterile environment
- vertical load capacity of up to 15 kg for each roller under a horizontal-positioned load



**"Germ-free components:  
suitable for direct contact with food"**