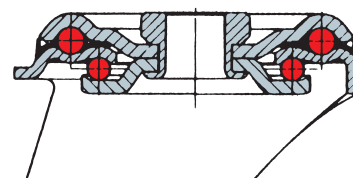
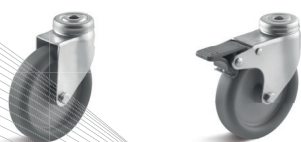


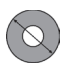





thermoplastic // apparatus castors, lightweight AL // up to 65 kg



Features:

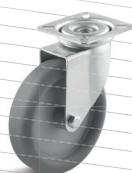
- castor series AL, thermoplastic, plain bearing:
- Lightweight, pressed steel sheet housing, galvanized
- Fork head with double ball bearing
- wheels with thermoplastic tires and plain bearings
- (old designation: 1330)



swivel castors	swivel castors with double brake	 wheel ø mm	 wheel width mm	 height mm	 projection, swivel castor mm	 bolt hole ø mm	 load-carrying capacity kg
L-AL-TPGK-050-G-1-VPE4 ID: 0028117	L-AL-TPGK-050-G-1-DSN-VPE4 ID: 0028121	50	18	71	21	10.2	40
L-AL-TPGK-075-G-1-VPE4 ID: 0028118	L-AL-TPGK-075-G-1-DSN-VPE4 ID: 0028122	75	23	101	25	10.2	50
L-AL-TPGK-100-G-1-VPE4 ID: 0030349	L-AL-TPGK-100-G-1-DSN-VPE4 ID: 0030351	100	23	122	32	10.2	60



"VPE4 = 4 units per package"



-3 (plate)



3-DSN (plate+ double brake)