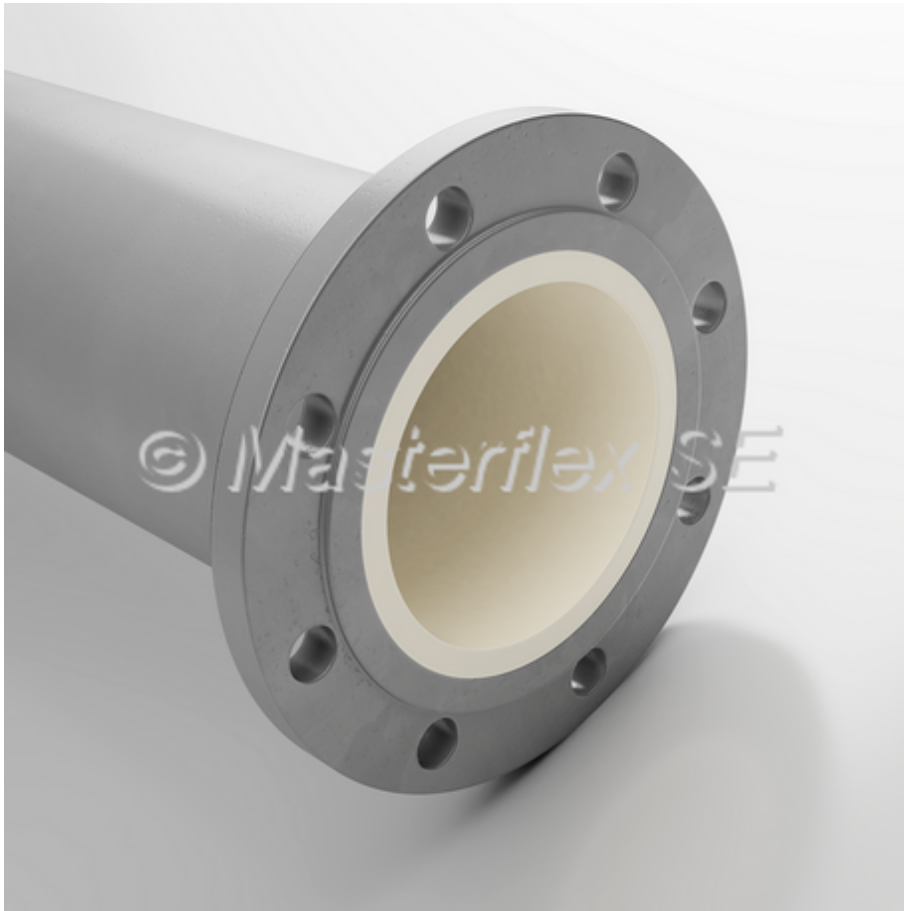


## Master-PROTECT Pipe

### PU-lined Pipe



### Order-specific Production

- Order-specific production in the above listed sizes, lengths and pressure steps

### Material

- pipe: DIN 2448 St 37, primed
- lining: polyurethane
- flange: R St 37, primed

### Applications

- Pneumatic conveying plants

### Properties

- extremely abrasion resistant
- much greater wear resistance than steel piping
- reduced operating costs via longer maintenance intervals
- lower risk of blockages via uniform concentration distribution and a more constant speed of transported goods
- pressure level PN 6 and PN 10/16

## Temperature Range

- -40°C to +80°C
- peaks to +110°C

## Product Variations

DN	d	PN	hole circle	no. holes	length	old article no	new article no.
	mm		mm		m		
50	54	6	110	4	1	R11-050-006	/
50	54	10/16	125	4	1	R11-050-010	/
65	70	6	130	4	1	R11-065-006	/
65	70	10/16	145	4	1	R11-065-010	/
80	82	6	150	4	1	R11-080-006	/
80	82	10/16	160	8	1	R11-080-010	005260
100	107	6	170	4	1	R11-100-006	/
100	107	10/16	180	8	1	R11-100-010	/
125	131	6	200	8	1	R11-125-006	/
125	131	10/16	210	8	1	R11-125-010	005261
150	159	6	225	8	1	R11-150-006	/
150	159	10/16	240	8	1	R11-150-010	/
200	207	6	280	8	1	R11-200-006	/
50	54	6	110	4	2	R21-050-006	/
50	54	10/16	125	4	2	R21-050-010	/
65	70	6	130	4	2	R21-065-006	/
65	70	10/16	145	4	2	R21-065-010	/
80	82	6	150	4	2	R21-080-006	/
80	82	10/16	160	8	2	R21-080-010	005264
100	107	6	170	4	2	R21-100-006	/
100	107	10/16	180	8	2	R21-100-010	005265
125	131	6	200	8	2	R21-125-006	/
125	131	10/16	210	8	2	R21-125-010	/
150	159	6	225	8	2	R21-150-006	/
150	159	10/16	240	8	2	R21-150-010	/
200	207	6	280	8	2	R21-200-006	/
50	54	6	110	4	3	R31-050-006	/
50	54	10/16	125	4	3	R31-050-010	005267
65	70	6	130	4	3	R31-065-006	/
65	70	10/16	145	4	3	R31-065-010	/
80	82	6	150	4	3	R31-080-006	/
80	82	10/16	160	8	3	R31-080-010	005268
100	107	6	170	4	3	R31-100-006	/
100	107	10/16	180	8	3	R31-100-010	005269
125	131	6	200	8	3	R31-125-006	/
125	131	10/16	210	8	3	R31-125-010	005270
150	159	6	225	8	3	R31-150-006	/
150	159	10/16	240	8	3	R31-150-010	/
200	207	6	280	8	3	R31-200-006	/

All data refers to a medium and ambient temperature of +20 °C.

\* Refers to the inner hose lining

Subject to technical changes and colour deviations.

Available on request

- Available on request in other DN sizes, lengths and in stainless steel