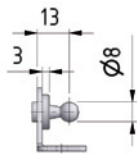
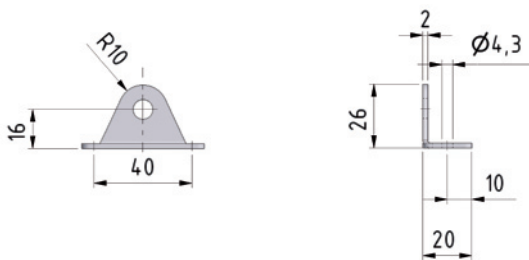
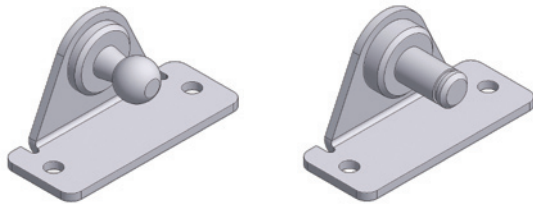


Winkelbeschlag

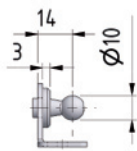
Material Stahl blau verzinkt

Optional Edelstahl W.1.4404/AISI 316 (V4)

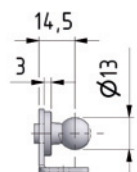
BA 30 / BA 30 V4



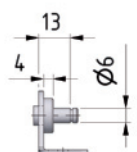
BA 30 K08
BA 30 K08 V4
Festigkeit max. 500 N



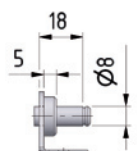
BA 30 K10
BA 30 K10 V4
Festigkeit max. 800 N



BA 30 K13
BA 30 K13 V4
Festigkeit max. 1200 N

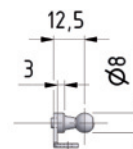
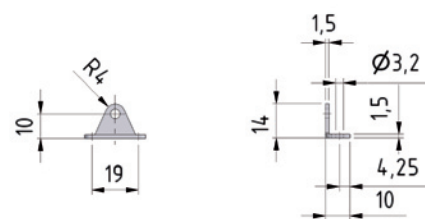


BA 30 Z06
BA 30 Z06 V4
Festigkeit max. 500 N

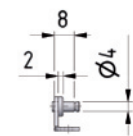


BA 30 Z08
BA 30 Z08 V4
Festigkeit max. 1200 N

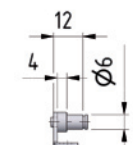
BB 20 / BB 20 V4



BB 20 K08
BB 20 K08 V4
Festigkeit max. 180 N



BB 20 Z04
BB 20 Z04 V4
Festigkeit max. 180 N



BB 20 Z06
BB 20 Z06 V4
Festigkeit max. 180 N