

## Series 305, 307, 309 Product Overview

### Features:

- Compact design suitable for use in confined spaces
- Available with DE-STA-CO® Toggle Lock Plus
- Stainless steel models available

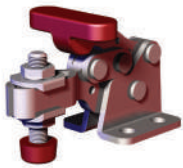
### Applications:

- Assembly & Test
- Light Machining
- Closures
- Woodworking

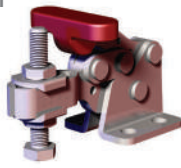
### Also Available:

See page 7.1 for accessories

**305-U**  
Flanged Base  
U-Bar



**305-USS**  
Flanged Base  
U-Bar, Stainless  
Steel



**305-UR**  
Flanged Base,  
U-Bar with  
DE-STA-CO®  
Toggle  
Lock  
Plus



**307-U**  
Flanged Base  
U-Bar



**307-USS**  
Flanged Base  
U-Bar, Stainless  
Steel



**307-UR**  
Flanged Base,  
U-Bar with  
DE-STA-CO®  
Toggle  
Lock  
Plus



**309-U**  
Flanged Base  
U-Bar



**309-USS**  
Flanged Base  
U-Bar, Stainless  
Steel



**309-UR ⓘ**  
Flanged Base,  
U-Bar with  
DE-STA-CO®  
Toggle  
Lock  
Plus



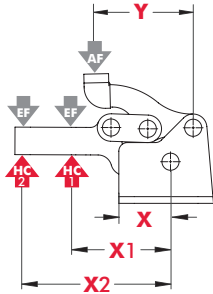
Note:  
Clamps shown with included accessories.

## Series 305, 307, 309 Technical Information

Model	Max. Holding Capacity	Clamp Bar Opening (+10°)	Handle Opening (+10°)	Weight	Accessories (Supplied)	
					Spindle Assembly	Flanged Washers
<b>305-U</b>	670 N [150 lbf]	90°	170°	0,06kg [0.13lb]	305208-M	102111
<b>305-USS</b>	900 N [200 lbf]				201943-M	102911
<b>305-UR</b>	670 N [150 lbf]				305208-M	102111
<b>307-U</b>	1560 N [350 lbf]	92°	173°	0,24kg [0.54lb]	307208-M	507107
<b>307-USS</b>					207943-M	507907
<b>307-UR</b>					307208-M	507107
<b>309-U</b>	3340 N [750 lbf]	90°	168°	1,30kg [0.59lb]	309208	235106
<b>309-USS</b>					237943-M	235906
<b>309-UR ⓘ</b>					309208	235106

ⓘ This item is available upon request

## Series 305, 307, 309 Holding Capacities

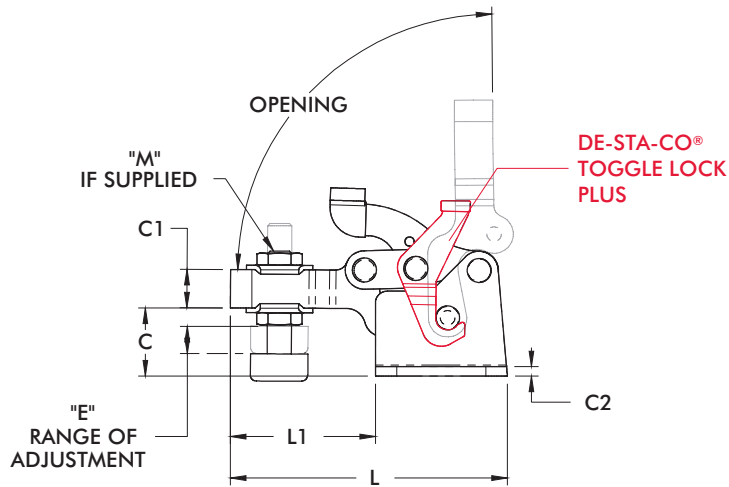
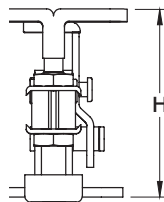
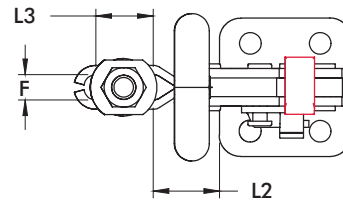
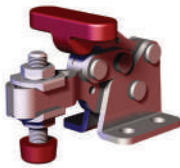


Model	X	X1	X2	Y	±HC1	±HC2	±EF(X1):AF	±EF(X2):AF
<b>305-U/UR</b>	[0.58]	[1.38]	[1.88]	[1.14]	[150lbf.] 670N	[110lbf.] 490N	3:1	2:1
<b>305-USS</b>	14,6	35	47,7	29	[200lbf.] 900N	[150lbf.] 670N		
<b>307-U/UR/USS</b>	[0.94]	[1.88]	[2.50]	[1.77]	[350lbf.] 1560N	[260lbf.] 1160N	4:1	
<b>309-U/UR/USS</b>	[1.34]	[2.50]	[3.50]	[2.70]	[750lbf.] 3340N	[530lbf.] 2360N		

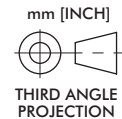
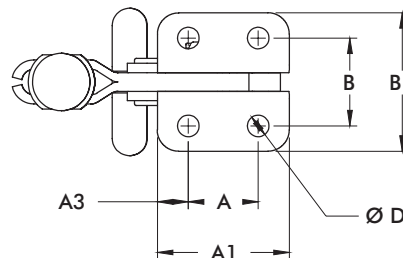
Dimensions shown "mm [inch]" ± HC = Holding Capacity, EF = Exerting Force, AF = Applied Force  
Refer to page 15.4 for additional information.

## Series 305, 307, 309 Standard Clamp Dimensions -U/-USS/-UR

**305-U**  
Flanged Base  
U-Bar



**307-UR**  
Flanged Base,  
U-Bar with  
DE-STA-CO®  
Toggle  
Lock  
Plus



Model	A	A1	A3	B	B1	C	C1	C2	D	E	F	H	L	L1	L2	L3	M
<b>305-U/UR</b>	[0.53] 13,5	[1.035] 26,3	[0.25] 6,4	[0.63] 16,0	[1.02] 25,9	[0.48] 12,2	[0.31] 7,9	[0.08] 2,0	[0.18] 4,6	[0.31] 8	[0.21] 5,3	[1.43] 36,3	[2.21] 56,1	[1.19] 30,2	[0.51] 13,0	[0.50] 12,7	[#10] M5
<b>307-U/UR</b>	[0.91] 23,1	[1.72] 43,7	[0.40] 10,2	[1.14] 29,0	[1.80] 45,7	[0.89] 22,6	[0.50] 12,7	[0.12] 3,0	[0.28] 7,1	[0.37] 9,5	[0.33] 8,4	[2.36] 59,9	[3.61] 91,7	[1.89] 48,0	[0.86] 21,8	[0.75] 19,1	[5/16] M8
<b>309-U/UR</b>	[1.38] 35,1	[2.52] 64,0	[0.58] 14,7	[1.50] 38,1	[2.47] 62,7	[1.31] 33,3	[0.75] 19,1	[0.12] 3,0	[0.33] 8,4	[0.72] 18,5	[0.44] 10,4	[3.53] 89,7	[5.19] 131,8	[2.68] 68,1	[1.28] 32,5	[1.06] 26,9	[3/8-1/4] M10