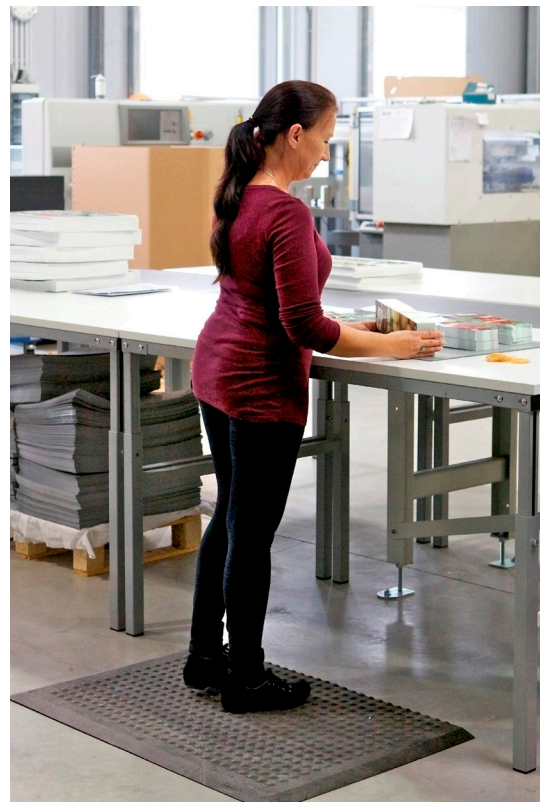


ergolastec basic

THE MULTI-PURPOSE MAT FOR ALL HIGH-FOOTFALL AREAS AND STAND-UP WORKSTATIONS



ergolastec basic

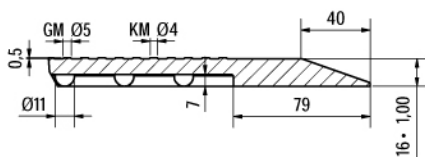
THE MULTI-PURPOSE MAT FOR ALL HIGH-FOOTFALL AREAS AND STAND-UP WORKSTATIONS

basic data	basic_dry	basic_wet	basic_diamond
Upper surface	flat structure	bubble-top	diamond structure
Bottom side	shock-absorbing bubbles	shock-absorbing bubbles	shock-absorbing bubbles
Outer edge	20° bevelled	20° bevelled	20° bevelled
Lenght/width/thickness	1350 x 1000 x 16 mm*	1350 x 1000 x 20 mm*	1350 x 1000 x 20 mm*
Weight	19 ± 1 kg	19,5 ± 1 kg	19,5 ± 1 kg
Hardness	55 ± 4 Shore A	55 ± 4 Shore A	55 ± 4 Shore A
Temperatur resistance	- 35°C bis + 95°C	- 35°C bis + 95°C	- 35°C bis + 95°C
Interlocking designs	Typ A to K	Typ A to K	Typ A to K
Material	Rubber SBR-based	Rubber SBR-based	Rubber SBR-based
Colour	black	black	black

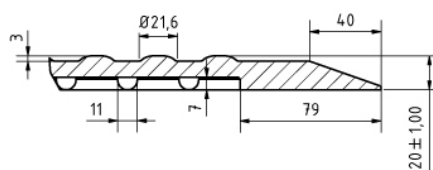
* Tolerances according to DIN ISO 3302-1M4

- The multi-purpose mat for all high-footfall areas and stand-up workstations which are not exposed to any specific impact or hostile influences, e.g. in front of workbenches, assembly benches, production lines, turning and milling machines, machining centres, in assembly pits, on gratings or at bar counters and cashier points
- Bevelled outside edges for reduced risk of stumbling
- Very firm and sturdy making it suitable as a base when using transportation equipment
- This mat is due to the choice of high quality material comperatively odour less and therefore good applicable at indoor- areas
- Cleaning of mat and floor facilitated by simple removal of mat
- Further information for application and handling you will find in our manuel under www.ergolastec.com/Download

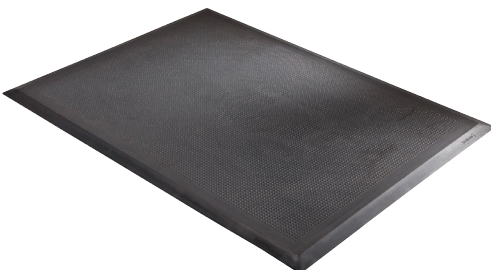
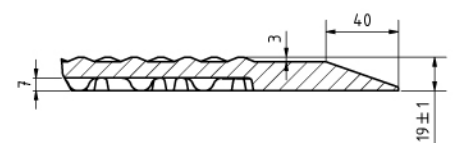
ergolastec basic_dry



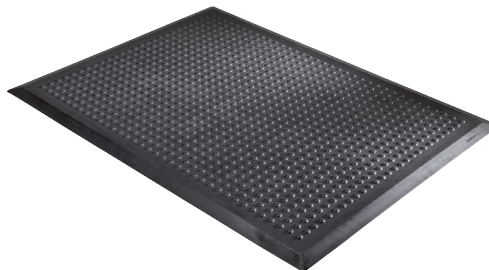
ergolastec basic_wet



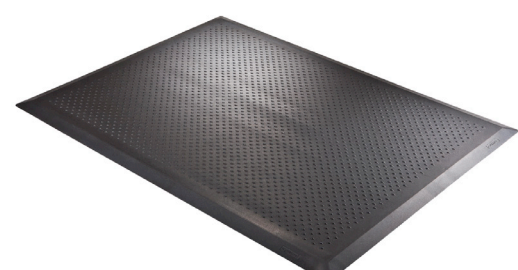
ergolastec basic_diamond



Mat with flat structure for dry workstations



Mat with bubble-top for damp workstations



Mat with diamond structure for workstations with increased slip danger