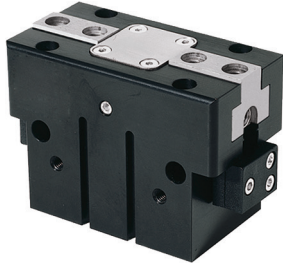


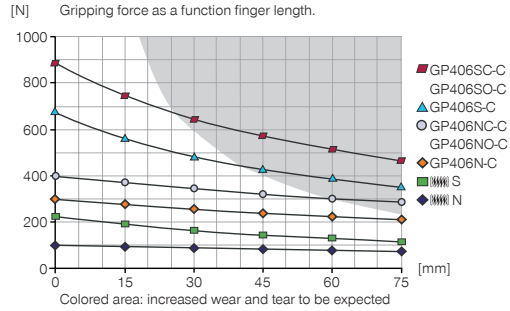
2-JAW PARALLEL GRIPPERS

INSTALLATION SIZE GP406

▶ PRODUCT SPECIFICATIONS

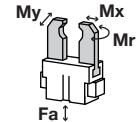


▶ Gripping force diagram



▶ Forces and moments

Displays static forces and moments that can also have an effect, besides the gripping force.



Mr [Nm]	35
Mx [Nm]	50
My [Nm]	45
Fa [N]	1200

▶ INCLUDED IN DELIVERY



Mounting block

KB8K



Centering Disc

DST40600

▶ RECOMMENDED ACCESSORIES



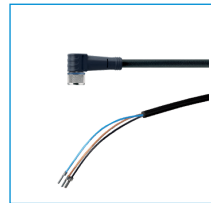
Universal Jaw Aluminium

UB406

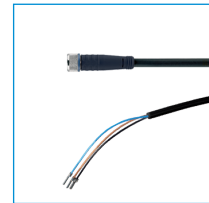


Universal Jaw Steel

UB406ST



Plug-in connector Angled Cable 5m - Socket M8 (female)
KAW500



Plug-in connector Straight Cable 5m - Socket M8 (female)
KAG500



Magnetic field sensor Angled Cable 0,3 m - Connector M8
MFS103SKHC



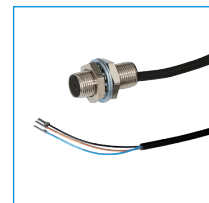
Magnetic field sensor Straight Cable 0,3 m - Connector M8
MFS204SKHC



2-Position-Sensor Cable 0,3 m - Connector M8
MFSP2SKHC



Straight Fittings - Quick Connect Style
GVM5



Inductive proximity switch - Cable 5 m
NJ8-E2



Inductive proximity switch - Connector M8
NJ8-E2S

Order no.	Technical Data*					
	GP406N-C	GP406NC-C	GP406NO-C	GP406S-C	GP406SC-C	GP406SO-C
Stroke per jaw [mm]	6	6	6	3	3	3
Gripping force in closing [N]	300	400		670	900	
Gripping force in opening [N]	325		425	725		950
Gripping force secured by spring min. [N]		100	100		230	230
Closing time [s]	0.03	0.025	0.04	0.03	0.025	0.04
Opening time [s]	0.03	0.04	0.025	0.03	0.04	0.025
Repetition accuracy +/- [mm]	0.01	0.01	0.01	0.01	0.01	0.01
Operating pressure min. [bar]	3	4	4	3	4	4
Operating pressure max. [bar]	8	8	8	8	8	8
Operating temperature min. [°C]	5	5	5	5	5	5
Operating temperature max. [°C]	80	80	80	80	80	80
Air volume per cycle [cm ³]	10.1	15.5	15.5	10.1	15.5	15.5
Weight [kg]	0.27	0.32	0.32	0.27	0.32	0.32

*All data measured at 6 bar

