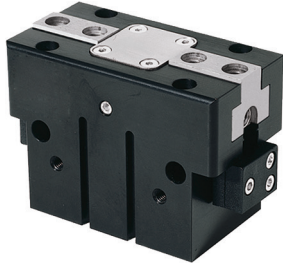


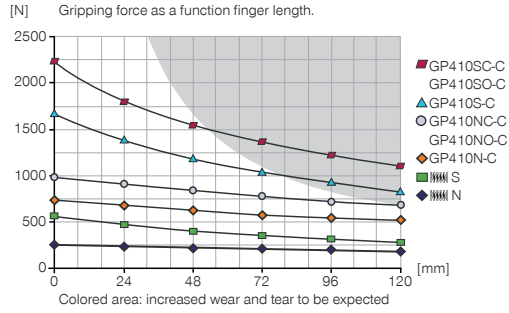
# 2-JAW PARALLEL GRIPPERS

## INSTALLATION SIZE GP410

### ▶ PRODUCT SPECIFICATIONS

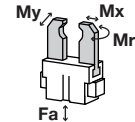


#### ▶ Gripping force diagram



#### ▶ Forces and moments

Displays static forces and moments that can also have an effect, besides the gripping force.



Mr [Nm]	75
Mx [Nm]	100
My [Nm]	90
Fa [N]	2500

### ▶ INCLUDED IN DELIVERY



Mounting block

KB8K



Centering Disc

DST41000

### ▶ RECOMMENDED ACCESSORIES



Universal Jaw Aluminium

UB410



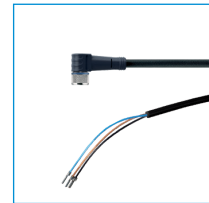
Universal Jaw Steel

UB410ST

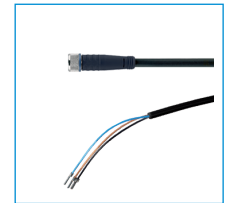


Alternate proximity bracket

KHA410-B-8



Plug-in connector Angled Cable 5m - Socket M8 (female)  
KAW500



Plug-in connector Straight Cable 5m - Socket M8 (female)  
KAG500



Magnetic field sensor Angled Cable 0,3 m - Connector M8  
MFS103SKHC



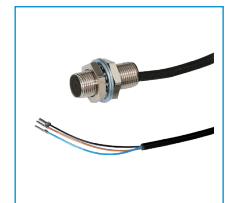
Magnetic field sensor Straight Cable 0,3 m - Connector M8  
MFS204SKHC



2-Position-Sensor Cable 0,3 m - Connector M8  
MFSP2SKHC



Straight Fittings - Quick Connect Style  
GV1-8X6



Inductive proximity switch - Cable 5 m  
NJ8-E2

Order no.	► Technical Data*					
	GP410N-C	GP410NC-C	GP410NO-C	GP410S-C	GP410SC-C	GP410SO-C
Stroke per jaw [mm]	10	10	10	5	5	5
Gripping force in closing [N]	740	990		1650	2215	
Gripping force in opening [N]	795		1050	1770		2340
Gripping force secured by spring min. [N]		250	250		570	570
Closing time [s]	0.07	0.06	0.09	0.07	0.06	0.09
Opening time [s]	0.07	0.09	0.06	0.07	0.09	0.06
Repetition accuracy +/- [mm]	0.01	0.01	0.01	0.01	0.01	0.01
Operating pressure min. [bar]	3	4	4	3	4	4
Operating pressure max. [bar]	8	8	8	8	8	8
Operating temperature min. [°C]	5	5	5	5	5	5
Operating temperature max. [°C]	80	80	80	80	80	80
Air volume per cycle [cm <sup>3</sup> ]	39.3	66.7	66.7	39.3	66.7	66.7
Weight [kg]	0.85	1	1	0.85	1	1

\*All data measured at 6 bar

