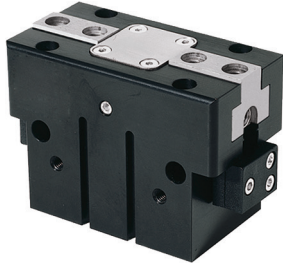


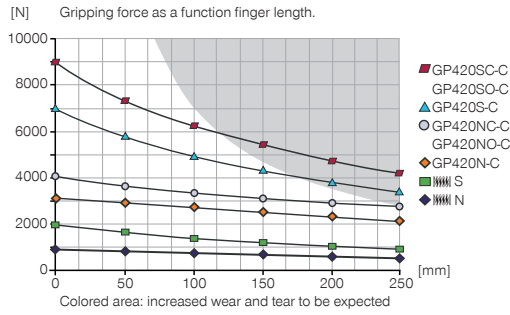
2-JAW PARALLEL GRIPPERS

INSTALLATION SIZE GP420

▶ PRODUCT SPECIFICATIONS

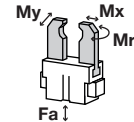


▶ Gripping force diagram



▶ Forces and moments

Displays static forces and moments that can also have an effect, besides the gripping force.



Mr [Nm]	170
Mx [Nm]	180
My [Nm]	220
Fa [N]	7000

▶ INCLUDED IN DELIVERY



Mounting block

KB8K



Centering Disc

DST42000

▶ RECOMMENDED ACCESSORIES



Universal Jaw Aluminium

UB420



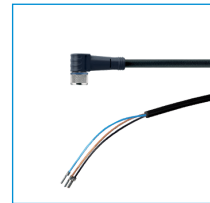
Universal Jaw Steel

UB420ST



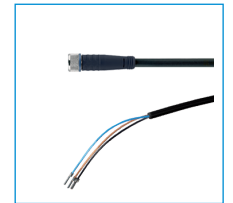
Alternate proximity bracket

KHA420-B-8



Plug-in connector Angled Cable 5m - Socket M8 (female)

KAW500



Plug-in connector Straight Cable 5m - Socket M8 (female)

KAG500



Magnetic field sensor Angled Cable 0,3 m - Connector M8

MFS103SKHC



Magnetic field sensor Straight Cable 0,3 m - Connector M8

MFS204SKHC



2-Position-Sensor Cable 0,3 m - Connector M8

MFSP2SKHC



Straight Fittings - Quick Connect Style

GV1-4X8



Inductive proximity switch - Cable 5 m

NJ8-E2

Order no.	► Technical Data*					
	GP420N-C	GP420NC-C	GP420NO-C	GP420S-C	GP420SC-C	GP420SO-C
Stroke per jaw [mm]	20	20	20	10	10	10
Gripping force in closing [N]	3175	4060		7080	9060	
Gripping force in opening [N]	3330		4215	7430		9400
Gripping force secured by spring min. [N]		900	900		1975	1975
Closing time [s]	0.35	0.3	0.4	0.35	0.3	0.4
Opening time [s]	0.35	0.4	0.3	0.35	0.4	0.3
Repetition accuracy +/- [mm]	0.02	0.02	0.02	0.02	0.02	0.02
Operating pressure min. [bar]	3	4	4	3	4	4
Operating pressure max. [bar]	8	8	8	8	8	8
Operating temperature min. [°C]	5	5	5	5	5	5
Operating temperature max. [°C]	80	80	80	80	80	80
Air volume per cycle [cm ³]	320	590	590	320	590	590
Weight [kg]	5.5	6.7	6.7	5.5	6.7	6.7

*All data measured at 6 bar

