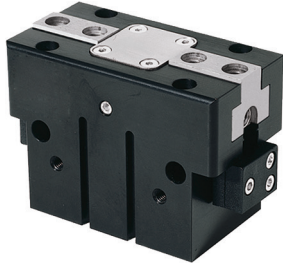


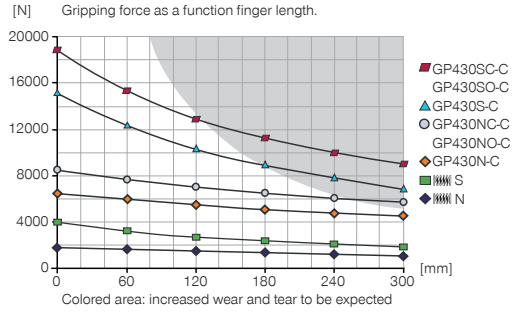
2-JAW PARALLEL GRIPPERS

INSTALLATION SIZE GP430

▶ PRODUCT SPECIFICATIONS

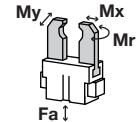


▶ Gripping force diagram



▶ Forces and moments

Displays static forces and moments that can also have an effect, besides the gripping force.



Mr [Nm]	200
Mx [Nm]	275
My [Nm]	300
Fa [N]	9000

▶ INCLUDED IN DELIVERY



Mounting block

KB8K



Centering Disc

DST43000

▶ RECOMMENDED ACCESSORIES



Universal Jaw Aluminium

UB430



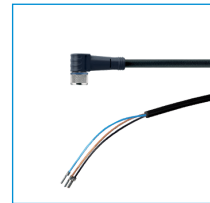
Universal Jaw Steel

UB430ST



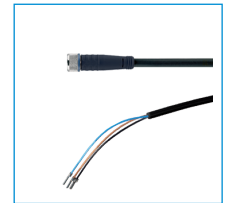
Alternate proximity bracket

KHA430-B-8



Plug-in connector Angled Cable 5m - Socket M8 (female)

KAW500



Plug-in connector Straight Cable 5m - Socket M8 (female)

KAG500



Magnetic field sensor Angled Cable 0,3 m - Connector M8

MFS103SKHC



Magnetic field sensor Straight Cable 0,3 m - Connector M8

MFS204SKHC



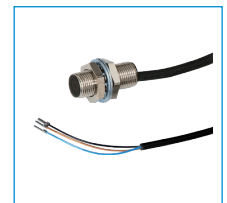
2-Position-Sensor Cable 0,3 m - Connector M8

MFSP2SKHC



Straight Fittings - Quick Connect Style

GV1-4X8



Inductive proximity switch - Cable 5 m

NJ8-E2

Order no.	► Technical Data*					
	GP430N-C	GP430NC-C	GP430NO-C	GP430S-C	GP430SC-C	GP430SO-C
Stroke per jaw [mm]	30	30	30	15	15	15
Gripping force in closing [N]	6675	8480		14900	18930	
Gripping force in opening [N]	6830		8640	15250		19275
Gripping force secured by spring min. [N]		1800	1800		4030	4030
Closing time [s]	0.4	0.4	0.8	0.4	0.4	0.8
Opening time [s]	0.4	0.8	0.4	0.4	0.8	0.4
Repetition accuracy +/- [mm]	0.04	0.04	0.04	0.04	0.04	0.04
Operating pressure min. [bar]	3	4	4	3	4	4
Operating pressure max. [bar]	8	8	8	8	8	8
Operating temperature min. [°C]	5	5	5	5	5	5
Operating temperature max. [°C]	80	80	80	80	80	80
Air volume per cycle [cm ³]	980	1850	1850	980	1850	1850
Weight [kg]	14	18.9	18.9	14	18.9	18.9

*All data measured at 6 bar

