

INDUSTRIAL SHOCK ABSORBERS POWERSTOP

INSTALLATION SIZE M8X1

▶ PRODUCT SPECIFICATIONS



PowerStop®

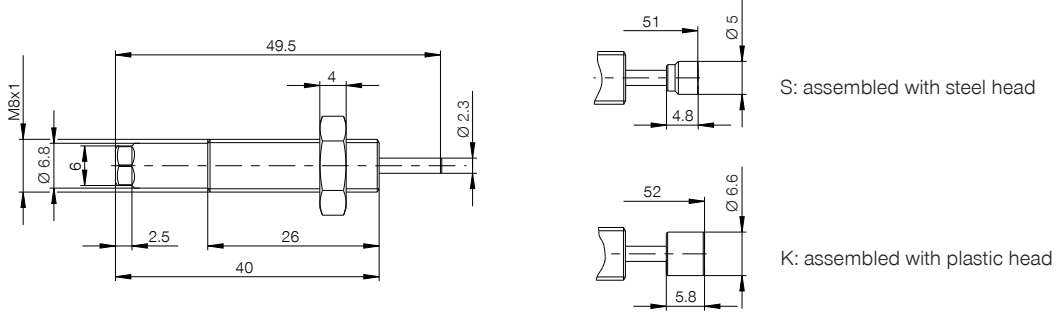
- ▶ Angle of Impact max. 2 [°]
- ▶ Piston return time 0.15 [s]
- ▶ Permitted temperature range -10 ... +70 [°C]
- ▶ Max. High Energy pressure (abs.) 10 [bar]
- ▶ Max. Standard Energy pressure (abs.) 1 [bar]
- ▶ Max. locknut tightening torque 6 [Nm]
- ▶ PWIS-free Yes
- ▶ RoHS compliant Yes
- ▶ REACH compliant Yes

▶ TECHNICAL DATA

▶ Installation Size: M8X1

	Order No.	Max. energy absorption		Stroke [mm]	Impact speed		Return force		Weight [g]	
		Emergency stop operation			min.	max.	min.	max.		
		per stroke [Nm]	per hour [Nm/h]							per stroke [Nm]
HIGH ENERGY	M8X1S	3	8,000	3	5	1.8	3.5	1	4	12
	M8X1SS	3	8,000	3	5	1.8	3.5	1	4	13
	M8X1SK	3	8,000	3	5	1.8	3.5	1	4	13
	M8X1M	4	9,000	4	5	0.8	2.2	1	4	12
	M8X1MS	4	9,000	4	5	0.8	2.2	1	4	13
	M8X1MK	4	9,000	4	5	0.8	2.2	1	4	13
	M8X1H	4	9,000	4	5	0.2	1.2	1	4	12
	M8X1HS	4	9,000	4	5	0.2	1.2	1	4	13
	M8X1HK	4	9,000	4	5	0.2	1.2	1	4	13
STANDARD ENERGY	M8X1RS	1.5	5,000	1.5	5	1.8	3.5	1	3	13
	M8X1RSS	1.5	5,000	1.5	5	1.8	3.5	1	3	14
	M8X1RSK	1.5	5,000	1.5	5	1.8	3.5	1	3	14
	M8X1RM	1.5	5,000	1.5	5	0.8	2.2	1	3	13
	M8X1RMS	1.5	5,000	1.5	5	0.8	2.2	1	3	14
	M8X1RMK	1.5	5,000	1.5	5	0.8	2.2	1	3	14
	M8X1RH	1.5	5,000	1.5	5	0.2	1.2	1	3	13
	M8X1RHS	1.5	5,000	1.5	5	0.2	1.2	1	3	14
	M8X1RHK	1.5	5,000	1.5	5	0.2	1.2	1	3	14

► TECHNICAL DRAWINGS



► ACCESSORIES

► Installation Size: **M8X1**

Pos.	Order no.	Accessories	Weight [g]	Remarks
①	MSM8X1	Steel locknut	3	
①	MVM8X1	Stainless steel locknut	3	
②	MAH8X1	Stop sleeve	10	Including 1x MVM8X1
③	MKF8X1	Clamping flange	20	Max. tightening torque of the screws 2.5 Nm

