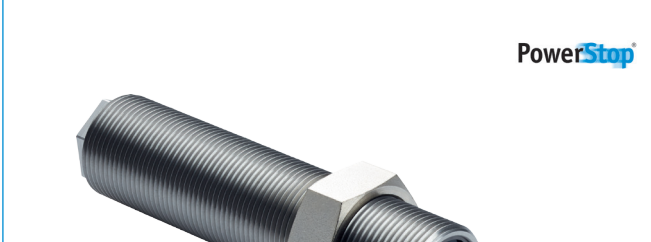


INDUSTRIAL SHOCK ABSORBERS POWERSTOP

INSTALLATION SIZE M27X1.5

▶ PRODUCT SPECIFICATIONS



PowerStop®

- ▶ Angle of Impact max. 2 [°]
- ▶ Piston return time 0.4 [s]
- ▶ Permitted temperature range -10 ... +70 [°C]
- ▶ Max. High Energy pressure (abs.) 10 [bar]
- ▶ Max. Standard Energy pressure (abs.) 1 [bar]
- ▶ Max. locknut tightening torque 60 [Nm]
- ▶ PWIS-free Yes
- ▶ RoHS compliant Yes
- ▶ REACH compliant Yes

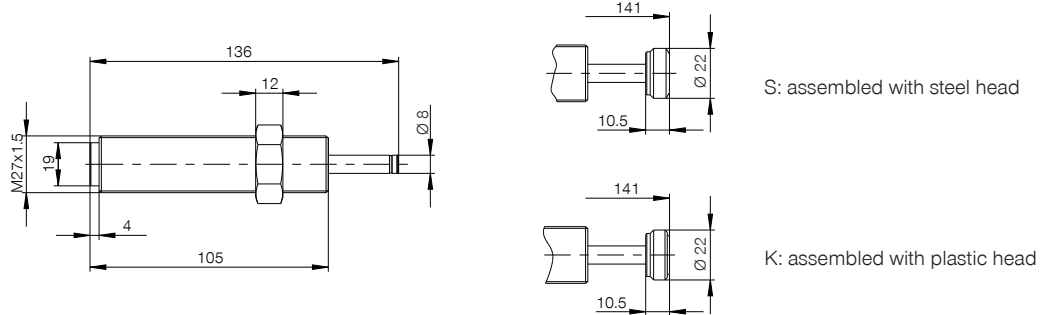
▶ TECHNICAL DATA

▶ Installation Size: M27X1.5

	Max. energy absorption		Stroke	Impact speed		Return force		Weight	
	Continuous operation	Emergency stop operation		min.	max.	min.	max.		
	per stroke	per hour	per stroke					[mm]	[m/s]
Order No.	[Nm]	[Nm/h]	[Nm]	[mm]	[m/s]				
HIGH ENERGY									
M27X1.5W	100	80,000	100	25	1.8	4	25	50	370
M27X1.5WS	100	80,000	100	25	1.8	4	25	50	395
M27X1.5WK	100	80,000	100	25	1.8	4	25	50	390
M27X1.5S	190	100,000	300	25	1.8	3.5	25	50	370
M27X1.5SS	190	100,000	300	25	1.8	3.5	25	50	395
M27X1.5SK	190	100,000	300	25	1.8	3.5	25	50	390
M27X1.5M	210	120,000	400	25	0.8	2.2	25	50	370
M27X1.5MS	210	120,000	400	25	0.8	2.2	25	50	395
M27X1.5MK	210	120,000	400	25	0.8	2.2	25	50	390
M27X1.5H	210	120,000	450	25	0.2	1.2	25	50	370
M27X1.5HS	210	120,000	450	25	0.2	1.2	25	50	395
M27X1.5HK	210	120,000	450	25	0.2	1.2	25	50	390

	Max. energy absorption		Stroke	Impact speed		Return force		Weight	
	Continuous operation	Emergency stop operation		min.	max.	min.	max.		
	per stroke	per hour	per stroke					[mm]	[m/s]
Order no.	[Nm]	[Nm/h]	[Nm]	[mm]	[m/s]				
STANDARD ENERGY									
M27X1.5RS	90	80,000	90	25	1.8	3.5	10	35	355
M27X1.5RSS	90	80,000	90	25	1.8	3.5	10	35	380
M27X1.5RSK	90	80,000	90	25	1.8	3.5	10	35	375
M27X1.5RM	90	80,000	90	25	0.8	2.2	10	35	355
M27X1.5RMS	90	80,000	90	25	0.8	2.2	10	35	380
M27X1.5RMK	90	80,000	90	25	0.8	2.2	10	35	375
M27X1.5RH	90	80,000	90	25	0.2	1.2	10	35	355
M27X1.5RHS	90	80,000	90	25	0.2	1.2	10	35	380
M27X1.5RHK	90	80,000	90	25	0.2	1.2	10	35	375

► TECHNICAL DRAWINGS



► ACCESSORIES

► Installation Size: **M27X1.5**

Pos.	Order no.	Accessories	Weight [g]	Remarks
①	MSM27X1.5	Steel locknut	40	
①	MVM27X1.5	Stainless steel locknut	40	
②	MAH27X1.5	Stop sleeve	155	Including 1x MVM27X1.5
③	MKF27X1.5	Clamping flange	255	Max. tightening torque of the screws 22 Nm
④	MRA27X1.5	Side load adapter / air barrier adapter	380	Max. angle of impact 30°, suitable MSM, MVM, MAH and MKF in the size M33X1.5 Including setscrew in compressed air connection M5
⑤	MKM27X1.5	Cooling nut	85	Increase of the energy absorption per hour up to 1.5 times

