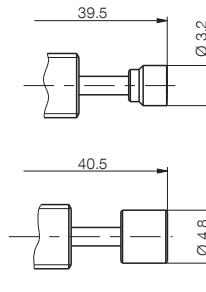
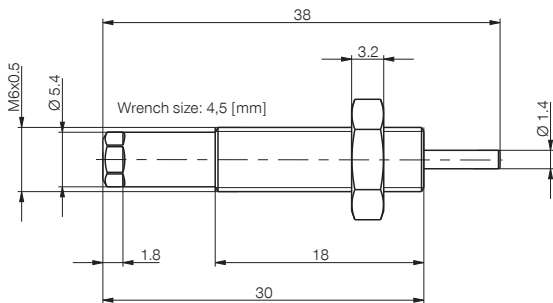
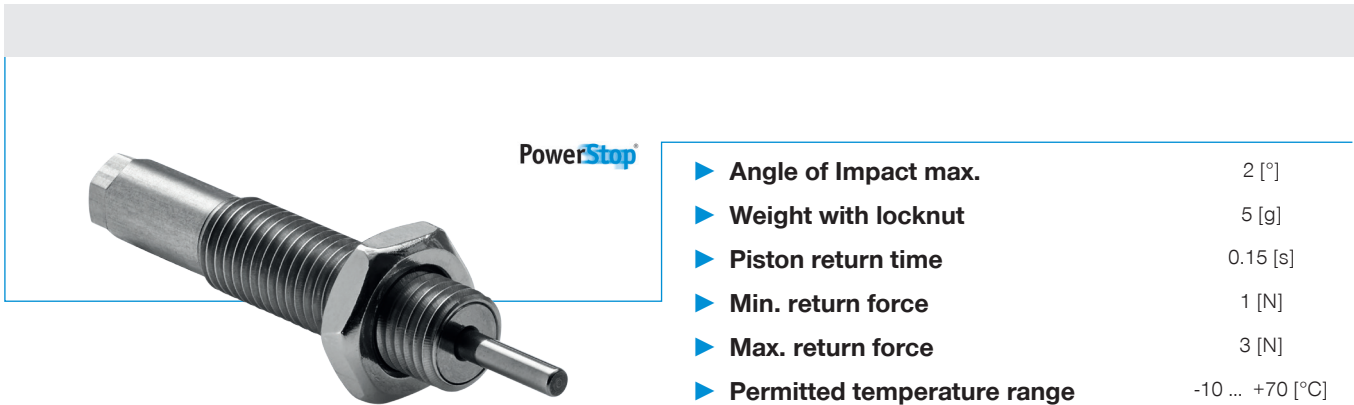


# INDUSTRIAL SHOCK ABSORBER

## SIZE M6X0.5

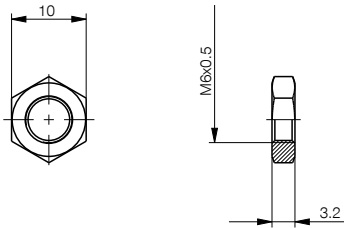


S: assembled with steel head

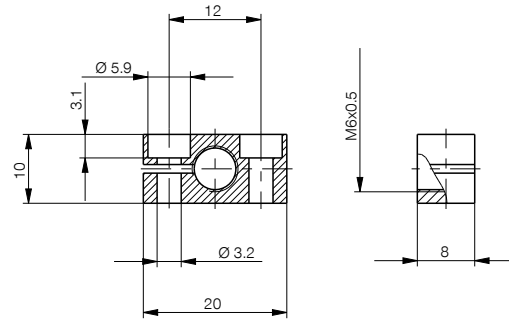
K: assembled with plastic head

HIGH ENERGY	Order No.	▶ <b>Technical data</b>			Stroke [mm]	Impact speed	
		Max. energy absorption		min.		max.	
		Continuous operation per stroke	Emergency stop operation per stroke				[m/s]
		[Nm]	[Nm/h]	[Nm]			
	<b>M6X0.5S</b>	1.5	3,200	-	4	1.8	3.5
	<b>M6X0.5SS</b>	1.5	3,200	-	4	1.8	3.5
	<b>M6X0.5SK</b>	1.5	3,200	-	4	1.8	3.5
	<b>M6X0.5M</b>	1.5	3,200	-	4	0.8	2.2
	<b>M6X0.5MS</b>	1.5	3,200	-	4	0.8	2.2
	<b>M6X0.5MK</b>	1.5	3,200	-	4	0.8	2.2

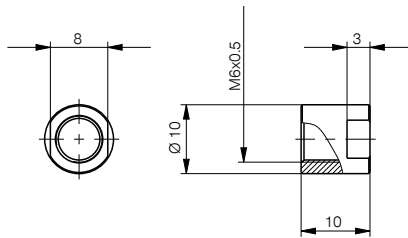
①



③



②



► Size: **M6X0.5**

Pos.	Accessories	Weight	Order no.
①	Steel locknut	2 [g]	<b>MSM6X0.5</b>
①	Stainless steel locknut	2 [g]	<b>MVM6X0.5</b>
②	Stop sleeve*	8 [g]	<b>MAH6x0.5</b>
③	Clamping flange	10 [g]	<b>MKF6X0.5</b>

Maximum fastening torque of locknut: 4 [Nm]

\*inclusive Stainless-Steel locknut MVM