

Știfturi de poziționare • striate sau ascuțite

22680.0144



Descrierea produsului

Pentru piesele de lucru cu suprafață dură. Modelul cu marcaj este adecvat pentru piesele turnate.

Material

Corp

- Oțel automat, călit, brunat

Desen

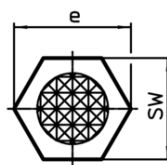
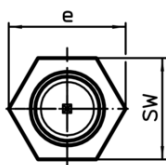
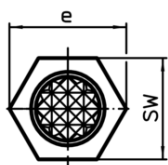
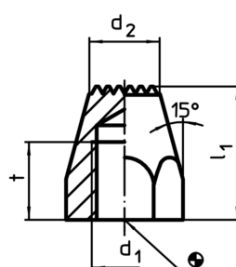
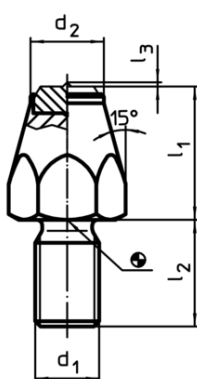
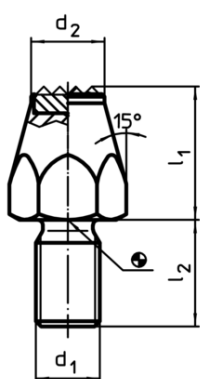



Figura 1

Figura 2

Figura 3

Informații comandă

l_1	d_1	Dimensiuni			SW	Moment strângere max. [Nm]		RoHS	REACH	Ref. Nr.
		t	d_2	e						
[mm]										
călit, striat cu filet interior – figura 3										
25	M8	10	9	15	13	18	20	Reclamație- RoHS	conține materiale SVHC >0.1% w/w	22680.0144

Exemplu de aplicație

