

Piuliță pentru canal T • DIN 508, semi-finisat

23010.0160



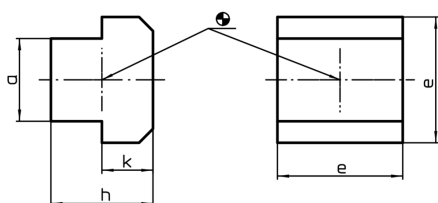
Descrierea produsului

These nuts for T-slots (slot nuts) semi-finished are manufactured according to DIN 508. The range is extended by other dimensions that are not included in DIN.


Material

- Oțel tratat termic, lucios

Desen



Informații comandă

Mărimea nominală fantă [mm]	a	Dimensiuni e [mm] h k			 [g]	RoHS	REACH	Ref. Nr. ¹⁾
16	15,6	25	18	9	68	Reclamație- RoHS	nu conține materiale SVHC	23010.0160

¹⁾ Standardul DIN nu include aceste dimensiuni.