

Piuliță pentru canal T • DIN 508, semi-finisat

23010.0480



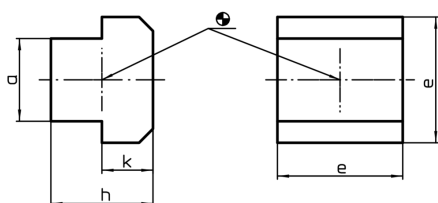
Descrierea produsului

These nuts for T-slots (slot nuts) semi-finished are manufactured according to DIN 508. The range is extended by other dimensions that are not included in DIN.


Material

- Oțel tratat termic, lucios

Desen



Informații comandă

Mărimea nominală fantă [mm]	Dimensiuni				 [g]	RoHS	REACH	Ref. Nr.
	a	e [mm]	h	k				
Oțel tratat termic								
48	47,5	75	60	30	1900	Reclamație- RoHS	nu conține materiale SVHC	23010.0480