

Piuliță pentru canal T • DIN 508, semi-finisat

23010.0730



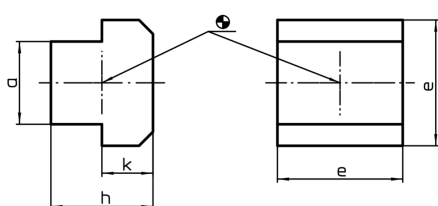
Descrierea produsului

These nuts for T-slots (slot nuts) semi-finished are manufactured according to DIN 508. The range is extended by other dimensions that are not included in DIN.


Material

- Oțel inoxidabil 1.4301

Desen



Informații comandă

Mărimea nominală fantă [mm]	a	Dimensiuni e h k [mm]			 [g]	RoHS	REACH	Ref. Nr.
10	9,6	15	12	6	17	Reclamație- RoHS	nu conține materiale SVHC	23010.0730