

Piuliță pentru canal T • DIN 508, semi-finisat

23010.0740



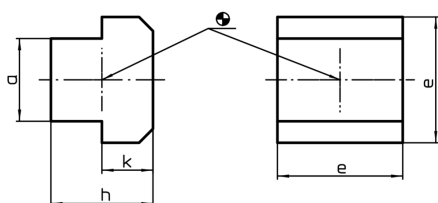
Descrierea produsului

These nuts for T-slots (slot nuts) semi-finished are manufactured according to DIN 508. The range is extended by other dimensions that are not included in DIN.


Material

- Oțel inoxidabil 1.4301

Desen



Informații comandă

Mărimea nominală fantă [mm]	a	Dimensiuni e [mm]			h	k	 [g]	RoHS	REACH	Ref. Nr.
12	11,6	18	14	7	28	Reclamație- RoHS	nu conține materiale SVHC	23010.0740		