

Mânere palmiforme • DIN 6335 oțel inoxidabil turnat
24631.0350



Descrierea produsului

Material

Mâner

- Oțel inoxidabil A2, mat sablat

Desen

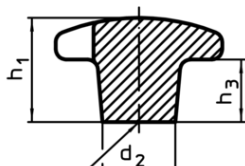


Figura 1

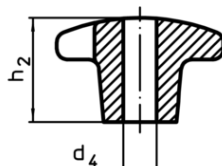


Figura 2

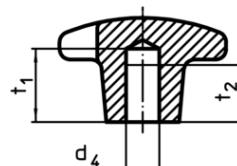


Figura 3

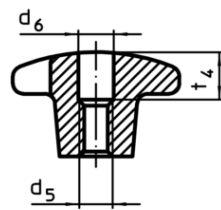
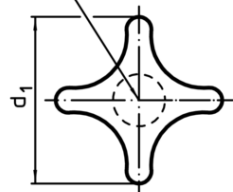


Figura 4

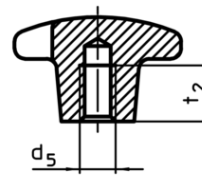


Figura 5

Informații comandă

Dimensiuni							[g]	RoHS	REACH	Ref. Nr.
d ₁	d ₂	d ₅	d ₆	h ₂	t ₄	[mm]				
cu filet, cu gaură de trecere, forma D – figura 4										
50	18	M10	10,5	32	16	100	Reclamație- RoHS	nu conține materiale SVHC	24631.0350	

Exemplu de aplicație

