

Mânere tip stea • DIN 6336 metal neferos

24660.0340

Descrierea produsului



Material

Mâner

- Metal neferos Al, nepolizat

Desen

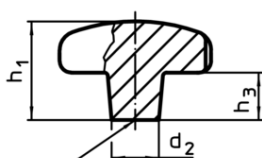


Figura 1

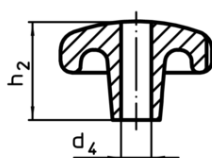


Figura 2

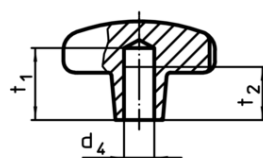


Figura 3

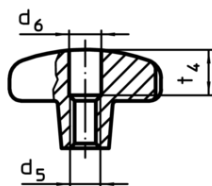
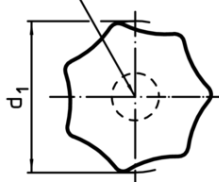


Figura 4

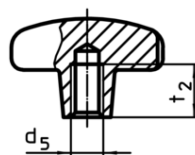


Figura 5

Informații comandă

Dimensiuni							[g]	RoHS	REACH	Ref. Nr.
d ₁	d ₂	d ₅	d ₆	h ₂	t ₄	[mm]				
cu filet, cu gaură de trecere, forma D – figura 4, nepolizat										
40	14	M8	8,4	25	12	32	Reclamație- RoHS	conține materiale SVHC >0.1% w/w	24660.0340	