

LP ECO AX SERIES

viledon®

CONVINCING FROM PRICE TO POWER

APPLICATION

- in potentially explosive atmospheres.
- in almost all industries:
wood, plastics and metal processing, textiles and paper industry, chemical industry incl. powder production, automotive, recycling and waste disposal, etc.
- fits moderate demands in all dust removal units for mechanical processes, e.g. grinding, sawing, drilling, milling etc.
- fits moderate demands in all dust removal units for surface treatment and processing, e.g. blasting systems etc.
- serves low demands in dust removal units with mixed applications and limited portion of thermal process dusts.



KEY DATA	Mounting system	Nominal diameter [mm]	Nominal length [mm]	Nominal volume flow [m³/h]	Nominal filter area [m²]
LP 145 F-30-A 08-01-ECO-ACA	T&F (no Hook)	145	300	40	0.8
LP 145 F-60-A 27-01-ECO-ACA	T&F (no Hook)	145	600	140	2.7
LP 145 F-30-A 10-01-ECO-ACA	T&F (no Hook)	145	300	50	1.0
LP 145 F-30-A 12-01-ECO-ACA	T&F (no Hook)	145	300	60	1.2
LP 145 F-60-A 16-01-ECO-ACA	T&F (no Hook)	145	600	80	1.6
LP 145 F-60-A 21-01-ECO-ACA	T&F (no Hook)	145	600	110	2.1
LP 145 F-10-A 27-01-ECO-ACA	T&F (no Hook)	145	1,000	140	2.7
LP 145 F-10-A 36-01-ECO-ACA	T&F (no Hook)	145	1,000	180	3.6
LP 145 F-10-A 45-01-ECO-ACA	T&F (no Hook)	145	1,000	230	4.5
LP 145 F-12-A 32-01-ECO-ACA	T&F (no Hook)	145	1,200	160	3.2
LP 145 F-12-A 43-01-ECO-ACA	T&F (no Hook)	145	1,200	220	4.3
LP 145 F-12-A 54-01-ECO-ACA	T&F (no Hook)	145	1,200	270	5.4
LP 145 F-15-A 40-01-ECO-ACA	T&F (no Hook)	145	1,500	200	4.0
LP 145 F-15-A 54-01-ECO-ACA	T&F (no Hook)	145	1,500	270	5.4
LP 145 F-15-A 67-01-ECO-ACA	T&F (no Hook)	145	1,500	340	6.7
LP 145 G-30-A 08-01-ECO-ACA	T&F (3 Hook, 180 mm)	145	300	40	0.8
LP 145 G-30-A 10-01-ECO-ACA	T&F (3 Hook, 180 mm)	145	300	50	1.0
LP 145 G-30-A 12-01-ECO-ACA	T&F (3 Hook, 180 mm)	145	300	60	1.2
LP 145 G-60-A 16-01-ECO-ACA	T&F (3 Hook, 180 mm)	145	600	80	1.6
LP 145 G-60-A 21-01-ECO-ACA	T&F (3 Hook, 180 mm)	145	600	110	2.1
LP 145 G-60-A 27-01-ECO-ACA	T&F (3 Hook, 180 mm)	145	600	140	2.7
LP 145 G-10-A 27-01-ECO-ACA	T&F (3 Hook, 180 mm)	145	1,000	140	2.7

KEY DATA	Mounting system	Nominal diameter [mm]	Nominal length [mm]	Nominal volume flow [m ³ /h]	Nominal filter area [m ²]
LP 145 G-10-A 36-01-ECO-ACA	T&F (3 Hook, 180 mm)	145	1,000	180	3.6
LP 145 G-10-A 45-01-ECO-ACA	T&F (3 Hook, 180 mm)	145	1,000	230	4.5
LP 145 G-12-A 32-01-ECO-ACA	T&F (3 Hook, 180 mm)	145	1,200	160	3.2
LP 145 G-12-A 43-01-ECO-ACA	T&F (3 Hook, 180 mm)	145	1,200	220	4.3
LP 145 G-12-A 54-01-ECO-ACA	T&F (3 Hook, 180 mm)	145	1,200	270	5.4
LP 145 G-15-A 40-01-ECO-ACA	T&F (3 Hook, 180 mm)	145	1,500	200	4.0
LP 145 G-15-A 54-01-ECO-ACA	T&F (3 Hook, 180 mm)	145	1,500	270	5.4
LP 145 G-15-A 67-01-ECO-ACA	T&F (3 Hook, 180 mm)	145	1,500	340	6.7
LP 152 B-30-A 08-01-ECO-ACA	S&F	152	300	40	0.8
LP 152 B-30-A 10-01-ECO-ACA	S&F	152	300	50	1.0
LP 152 B-30-A 12-01-ECO-ACA	S&F	152	300	60	1.2
LP 152 B-60-A 16-01-ECO-ACA	S&F	152	600	80	1.6
LP 152 B-60-A 21-01-ECO-ACA	S&F	152	600	110	2.1
LP 152 B-60-A 27-01-ECO-ACA	S&F	152	600	140	2.7
LP 152 B-10-A 27-01-ECO-ACA	S&F	152	1,000	140	2.7
LP 152 B-10-A 36-01-ECO-ACA	S&F	152	1,000	180	3.6
LP 152 B-10-A 45-01-ECO-ACA	S&F	152	1,000	230	4.5
LP 152 B-12-A 32-01-ECO-ACA	S&F	152	1,200	160	3.2
LP 152 B-12-A 43-01-ECO-ACA	S&F	152	1,200	220	4.3
LP 152 B-12-A 54-01-ECO-ACA	S&F	152	1,200	270	5.4
LP 152 B-15-A 40-01-ECO-ACA	S&F	152	1,500	200	4.0
LP 152 B-15-A 54-01-ECO-ACA	S&F	152	1,500	270	5.4
LP 152 B-15-A 67-01-ECO-ACA	S&F	152	1,500	340	6.7
LP 155 B-30-A 08-01-ECO-ACA	S&F	155	300	40	0.8
LP 155 B-30-A 10-01-ECO-ACA	S&F	155	300	50	1.0
LP 155 B-30-A 12-01-ECO-ACA	S&F	155	300	60	1.2
LP 155 B-60-A 16-01-ECO-ACA	S&F	155	600	80	1.6
LP 155 B-60-A 21-01-ECO-ACA	S&F	155	600	110	2.1
LP 155 B-60-A 27-01-ECO-ACA	S&F	155	600	140	2.7
LP 155 B-10-A 27-01-ECO-ACA	S&F	155	1,000	140	2.7
LP 155 B-10-A 36-01-ECO-ACA	S&F	155	1,000	180	3.6
LP 155 B-10-A 45-01-ECO-ACA	S&F	155	1,000	230	4.5
LP 155 B-12-A 32-01-ECO-ACA	S&F	155	1,200	160	3.2
LP 155 B-12-A 43-01-ECO-ACA	S&F	155	1,200	220	4.3
LP 155 B-12-A 54-01-ECO-ACA	S&F	155	1,200	270	5.4
LP 155 B-15-A 40-01-ECO-ACA	S&F	155	1,500	200	4.0

KEY DATA	Mounting system	Nominal diameter [mm]	Nominal length [mm]	Nominal volume flow [m ³ /h]	Nominal filter area [m ²]
LP 155 B-15-A 54-01-ECO-ACA	S&F	155	1,500	270	5.4
LP 155 B-15-A 67-01-ECO-ACA	S&F	155	1,500	340	6.7
LP 156 G-30-A 08-01-ECO-ACA	T&F (3 Hook, 204 mm)	156	300	40	0.8
LP 156 G-30-A 10-01-ECO-ACA	T&F (3 Hook, 204 mm)	156	300	50	1.0
LP 156 G-30-A 12-01-ECO-ACA	T&F (3 Hook, 204 mm)	156	300	60	1.2
LP 156 G-60-A 16-01-ECO-ACA	T&F (3 Hook, 204 mm)	156	600	80	1.6
LP 156 G-60-A 21-01-ECO-ACA	T&F (3 Hook, 204 mm)	156	600	110	2.1
LP 156 G-60-A 27-01-ECO-ACA	T&F (3 Hook, 204 mm)	156	600	140	2.7
LP 156 G-10-A 27-01-ECO-ACA	T&F (3 Hook, 204 mm)	156	1,000	140	2.7
LP 156 G-10-A 36-01-ECO-ACA	T&F (3 Hook, 204 mm)	156	1,000	180	3.6
LP 156 G-10-A 45-01-ECO-ACA	T&F (3 Hook, 204 mm)	156	1,000	230	4.5
LP 156 G-12-A 32-01-ECO-ACA	T&F (3 Hook, 204 mm)	156	1,200	160	3.2
LP 156 G-12-A 43-01-ECO-ACA	T&F (3 Hook, 204 mm)	156	1,200	220	4.3
LP 156 G-12-A 54-01-ECO-ACA	T&F (3 Hook, 204 mm)	156	1,200	270	5.4
LP 156 G-15-A 40-01-ECO-ACA	T&F (3 Hook, 204 mm)	156	1,500	200	4.0
LP 156 G-15-A 54-01-ECO-ACA	T&F (3 Hook, 204 mm)	156	1,500	270	5.4
LP 156 G-15-A 67-01-ECO-ACA	T&F (3 Hook, 204 mm)	156	1,500	340	6.7
LP 218 G-30-A 15-01-ECO-ACA	T&F (3 Hook, 264 mm)	218	300	80	1.5
LP 218 G-30-A 24-01-ECO-ACA	T&F (3 Hook, 264 mm)	218	300	120	2.4
LP 218 G-60-A 30-01-ECO-ACA	T&F (3 Hook, 264 mm)	218	600	150	3.0
LP 218 G-60-A 50-01-ECO-ACA	T&F (3 Hook, 264 mm)	218	600	250	5.0
LP 218 G-10-A 50-01-ECO-ACA	T&F (3 Hook, 264 mm)	218	1,000	250	5.0
LP 218 G-10-A 83-01-ECO-ACA	T&F (3 Hook, 264 mm)	218	1,000	420	8.3
LP 218 G-12-A 10-01-ECO-ACA	T&F (3 Hook, 264 mm)	218	1,200	500	10.0
LP 218 G-12-A 60-01-ECO-ACA	T&F (3 Hook, 264 mm)	218	1,200	300	6.0
LP 218 G-15-A 12-01-ECO-ACA	T&F (3 Hook, 264 mm)	218	1,500	600	12.0
LP 218 G-15-A 75-01-ECO-ACA	T&F (3 Hook, 264 mm)	218	1,500	380	7.5
LP 218 H-30-A 15-01-ECO-ACA	T&F (4 Hook, 264 mm)	218	300	80	1.5
LP 218 H-30-A 24-01-ECO-ACA	T&F (4 Hook, 264 mm)	218	300	120	2.4
LP 218 H-60-A 30-01-ECO-ACA	T&F (4 Hook, 264 mm)	218	600	150	3.0
LP 218 H-60-A 50-01-ECO-ACA	T&F (4 Hook, 264 mm)	218	600	250	5.0
LP 218 H-10-A 50-01-ECO-ACA	T&F (4 Hook, 264 mm)	218	1,000	250	5.0
LP 218 H-10-A 83-01-ECO-ACA	T&F (4 Hook, 264 mm)	218	1,000	420	8.3
LP 218 H-12-A 10-01-ECO-ACA	T&F (4 Hook, 264 mm)	218	1,200	500	10.0
LP 218 H-12-A 60-01-ECO-ACA	T&F (4 Hook, 264 mm)	218	1,200	300	6.0
LP 218 H-15-A 12-01-ECO-ACA	T&F (4 Hook, 264 mm)	218	1,500	600	12.0

KEY DATA	Mounting system	Nominal diameter [mm]	Nominal length [mm]	Nominal volume flow [m ³ /h]	Nominal filter area [m ²]
LP 218 H-15-A 75-01-ECO-ACA	T&F (4 Hook, 264 mm)	218	1,500	380	7.5
LP 320 M-60-A 10-01-ECO-ACA	3 Hook, 366 mm	320	600	500	10.0
LP 320 M-60-A 12-01-ECO-ACA	3 Hook, 366 mm	320	600	600	12.0
LP 320 M-60-A 77-01-ECO-ACA	3 Hook, 366 mm	320	600	390	7.7
LP 320 M-66-A 11-01-ECO-ACA	3 Hook, 366 mm	320	660	550	11.0
LP 320 M-66-A 14-01-ECO-ACA	3 Hook, 366 mm	320	660	700	14.0
LP 320 M-66-A 85-01-ECO-ACA	3 Hook, 366 mm	320	660	430	8.5
LP 320 M-10-A 13-01-ECO-ACA	3 Hook, 366 mm	320	1,000	650	13.0
LP 320 M-10-A 16-01-ECO-ACA	3 Hook, 366 mm	320	1,000	800	16.0
LP 320 M-10-A 21-01-ECO-ACA	3 Hook, 366 mm	320	1,000	1,100	21.0
LP 320 M-12-A 15-01-ECO-ACA	3 Hook, 366 mm	320	1,200	750	15.0
LP 320 M-12-A 20-01-ECO-ACA	3 Hook, 366 mm	320	1,200	1,000	20.0
LP 320 M-12-A 25-01-ECO-ACA	3 Hook, 366 mm	320	1,200	1,300	25.0
LP 320 M-15-A 20-01-ECO-ACA	3 Hook, 366 mm	320	1,500	1,000	20.0
LP 320 M-15-A 25-01-ECO-ACA	3 Hook, 366 mm	320	1,500	1,300	25.0
LP 320 M-15-A 31-01-ECO-ACA	3 Hook, 366 mm	320	1,500	1,600	31.0
LP 324 F-60-A 10-01-ECO-ACA	T&F (no Hook)	324	600	500	10.0
LP 324 F-60-A 12-01-ECO-ACA	T&F (no Hook)	324	600	600	12.0
LP 324 F-60-A 77-01-ECO-ACA	T&F (no Hook)	324	600	390	7.7
LP 324 F-66-A 11-01-ECO-ACA	T&F (no Hook)	324	660	550	11.0
LP 324 F-66-A 14-01-ECO-ACA	T&F (no Hook)	324	660	700	14.0
LP 324 F-66-A 85-01-ECO-ACA	T&F (no Hook)	324	660	430	8.5
LP 324 F-10-A 13-01-ECO-ACA	T&F (no Hook)	324	1,000	650	13.0
LP 324 F-10-A 16-01-ECO-ACA	T&F (no Hook)	324	1,000	800	16.0
LP 324 F-10-A 21-01-ECO-ACA	T&F (no Hook)	324	1,000	1,100	21.0
LP 324 F-12-A 15-01-ECO-ACA	T&F (no Hook)	324	1,200	750	15.0
LP 324 F-12-A 20-01-ECO-ACA	T&F (no Hook)	324	1,200	1,000	20.0
LP 324 F-12-A 25-01-ECO-ACA	T&F (no Hook)	324	1,200	1,300	25.0
LP 324 F-15-A 20-01-ECO-ACA	T&F (no Hook)	324	1,500	1,000	20.0
LP 324 F-15-A 25-01-ECO-ACA	T&F (no Hook)	324	1,500	1,300	25.0
LP 324 F-15-A 31-01-ECO-ACA	T&F (no Hook)	324	1,500	1,600	31.0
LP 324 G-60-A 10-01-ECO-ACA	T&F (3 Hook, 392 mm)	324	600	500	10.0
LP 324 G-60-A 12-01-ECO-ACA	T&F (3 Hook, 392 mm)	324	600	600	12.0
LP 324 G-60-A 77-01-ECO-ACA	T&F (3 Hook, 392 mm)	324	600	390	7.7
LP 324 G-66-A 11-01-ECO-ACA	T&F (3 Hook, 392 mm)	324	660	550	11.0
LP 324 G-66-A 14-01-ECO-ACA	T&F (3 Hook, 392 mm)	324	660	700	14.0

KEY DATA	Mounting system	Nominal diameter [mm]	Nominal length [mm]	Nominal volume flow [m ³ /h]	Nominal filter area [m ²]
LP 324 G-66-A 85-01-ECO-ACA	T&F (3 Hook, 392 mm)	324	660	430	8.5
LP 324 G-10-A 13-01-ECO-ACA	T&F (3 Hook, 392 mm)	324	1,000	650	13.0
LP 324 G-10-A 16-01-ECO-ACA	T&F (3 Hook, 392 mm)	324	1,000	800	16.0
LP 324 G-10-A 21-01-ECO-ACA	T&F (3 Hook, 392 mm)	324	1,000	1,100	21.0
LP 324 G-12-A 15-01-ECO-ACA	T&F (3 Hook, 392 mm)	324	1,200	750	15.0
LP 324 G-12-A 20-01-ECO-ACA	T&F (3 Hook, 392 mm)	324	1,200	1,000	20.0
LP 324 G-12-A 25-01-ECO-ACA	T&F (3 Hook, 392 mm)	324	1,200	1,300	25.0
LP 324 G-15-A 20-01-ECO-ACA	T&F (3 Hook, 392 mm)	324	1,500	1,000	20.0
LP 324 G-15-A 25-01-ECO-ACA	T&F (3 Hook, 392 mm)	324	1,500	1,300	25.0
LP 324 G-15-A 31-01-ECO-ACA	T&F (3 Hook, 392 mm)	324	1,500	1,600	31.0
LP 324 Y-60-A 10-01-ECO-ACA	Rectangle Flange (406 mm x 362 mm)	324	600	500	10.0
LP 324 Y-60-A 12-01-ECO-ACA	Rectangle Flange (406 mm x 362 mm)	324	600	600	12.0
LP 324 Y-60-A 77-01-ECO-ACA	Rectangle Flange (406 mm x 362 mm)	324	600	390	7.7
LP 324 Y-66-A 11-01-ECO-ACA	Rectangle Flange (406 mm x 362 mm)	324	660	550	11.0
LP 324 Y-66-A 14-01-ECO-ACA	Rectangle Flange (406 mm x 362 mm)	324	660	700	14.0
LP 324 Y-66-A 85-01-ECO-ACA	Rectangle Flange (406 mm x 362 mm)	324	660	430	8.5
LP 324 Y-10-A 13-01-ECO-ACA	Rectangle Flange (406 mm x 362 mm)	324	1,000	650	13.0
LP 324 Y-10-A 16-01-ECO-ACA	Rectangle Flange (406 mm x 362 mm)	324	1,000	800	16.0
LP 324 Y-10-A 21-01-ECO-ACA	Rectangle Flange (406 mm x 362 mm)	324	1,000	1,000	20.0
LP 324 Y-12-A 15-01-ECO-ACA	Rectangle Flange (406 mm x 362 mm)	324	1,200	750	15.0
LP 324 Y-12-A 20-01-ECO-ACA	Rectangle Flange (406 mm x 362 mm)	324	1,200	1,000	20.0
LP 324 Y-12-A 25-01-ECO-ACA	Rectangle Flange (406 mm x 362 mm)	324	1,200	1,300	25.0
LP 324 Y-15-A 20-01-ECO-ACA	Rectangle Flange (406 mm x 362 mm)	324	1,500	1,000	20.0
LP 324 Y-15-A 25-01-ECO-ACA	Rectangle Flange (406 mm x 362 mm)	324	1,500	1,300	25.0
LP 324 Y-15-A 31-01-ECO-ACA	Rectangle Flange (406 mm x 362 mm)	324	1,500	1,600	31.0
LP 327 B-60-A 10-01-ECO-ACA	Bayonet	327	600	500	10.0

KEY DATA	Mounting system	Nominal diameter [mm]	Nominal length [mm]	Nominal volume flow [m ³ /h]	Nominal filter area [m ²]
LP 327 B-60-A 12-01-ECO-ACA	Bayonet	327	600	600	12.0
LP 327 B-60-A 77-01-ECO-ACA	Bayonet	327	600	390	7.7
LP 327 B-66-A 11-01-ECO-ACA	Bayonet	327	660	550	11.0
LP 327 B-66-A 14-01-ECO-ACA	Bayonet	327	660	700	14.0
LP 327 B-66-A 85-01-ECO-ACA	Bayonet	327	660	430	8.5
LP 327 B-71-A 10-01-ECO-ACA	Bayonet	327	710	500	10.0
LP 327 B-71-A 12-01-ECO-ACA	Bayonet	327	710	600	12.0
LP 327 B-71-A 15-01-ECO-ACA	Bayonet	327	710	750	15.0
LP 327 B-75-A 10-01-ECO-ACA	Bayonet	327	750	500	10.0
LP 327 B-75-A 12-01-ECO-ACA	Bayonet	327	750	600	12.0
LP 327 B-75-A 16-01-ECO-ACA	Bayonet	327	750	800	16.0
LP 327 B-10-A 13-01-ECO-ACA	Bayonet	327	1,000	650	13.0
LP 327 B-10-A 16-01-ECO-ACA	Bayonet	327	1,000	800	16.0
LP 327 B-10-A 21-01-ECO-ACA	Bayonet	327	1,000	1,100	21.0
LP 327 B-12-A 15-01-ECO-ACA	Bayonet	327	1,200	750	15.0
LP 327 B-12-A 20-01-ECO-ACA	Bayonet	327	1,200	1,000	20.0
LP 327 B-12-A 25-01-ECO-ACA	Bayonet	327	1,200	1,300	25.0
LP 327 B-15-A 20-01-ECO-ACA	Bayonet	327	1,500	1,000	20.0
LP 327 B-15-A 25-01-ECO-ACA	Bayonet	327	1,500	1,300	25.0
LP 327 B-15-A 31-01-ECO-ACA	Bayonet	327	1,500	1,600	31.0
LP 327 D-60-A 10-01-ECO-ACA	DIN (open)	327	600	500	10.0
LP 327 D-60-A 12-01-ECO-ACA	DIN (open)	327	600	600	12.0
LP 327 D-60-A 77-01-ECO-ACA	DIN (open)	327	600	390	7.7
LP 327 D-66-A 11-01-ECO-ACA	DIN (open)	327	660	550	11.0
LP 327 D-66-A 14-01-ECO-ACA	DIN (open)	327	660	700	14.0
LP 327 D-66-A 85-01-ECO-ACA	DIN (open)	327	660	430	8.5
LP 327 D-71-A 10-01-ECO-ACA	DIN (open)	327	710	500	10.0
LP 327 D-71-A 12-01-ECO-ACA	DIN (open)	327	710	600	12.0
LP 327 D-71-A 15-01-ECO-ACA	DIN (open)	327	710	750	15.0
LP 327 D-75-A 10-01-ECO-ACA	DIN (open)	327	750	500	10.0
LP 327 D-75-A 12-01-ECO-ACA	DIN (open)	327	750	600	12.0
LP 327 D-75-A 16-01-ECO-ACA	DIN (open)	327	750	800	16.0
LP 327 D-10-A 13-01-ECO-ACA	DIN (open)	327	1,000	650	13.0
LP 327 D-10-A 16-01-ECO-ACA	DIN (open)	327	1,000	800	16.0
LP 327 D-10-A 21-01-ECO-ACA	DIN (open)	327	1,000	1,100	21.0
LP 327 D-12-A 15-01-ECO-ACA	DIN (open)	327	1,200	750	15.0

KEY DATA	Mounting system	Nominal diameter [mm]	Nominal length [mm]	Nominal volume flow [m ³ /h]	Nominal filter area [m ²]
LP 327 D-12-A 20-01-ECO-ACA	DIN (open)	327	1,200	1,000	20.0
LP 327 D-12-A 25-01-ECO-ACA	DIN (open)	327	1,200	1,300	25.0
LP 327 D-15-A 20-01-ECO-ACA	DIN (open)	327	1,500	1,000	20.0
LP 327 D-15-A 25-01-ECO-ACA	DIN (open)	327	1,500	1,300	25.0
LP 327 D-15-A 31-01-ECO-ACA	DIN (open)	327	1,500	1,600	31.0
LP 327 S-10-A 13-01-ECO-ACA	DIN (center hole)	327	1,000	650	13.0
LP 327 S-60-A 10-01-ECO-ACA	DIN (center hole)	327	600	500	10.0
LP 327 S-60-A 12-01-ECO-ACA	DIN (center hole)	327	600	600	12.0
LP 327 S-60-A 77-01-ECO-ACA	DIN (center hole)	327	600	390	7.7
LP 327 S-66-A 11-01-ECO-ACA	DIN (center hole)	327	660	550	11.0
LP 327 S-66-A 14-01-ECO-ACA	DIN (center hole)	327	660	700	14.0
LP 327 S-66-A 85-01-ECO-ACA	DIN (center hole)	327	660	430	8.5
LP 327 S-71-A 10-01-ECO-ACA	DIN (center hole)	327	710	500	10.0
LP 327 S-71-A 12-01-ECO-ACA	DIN (center hole)	327	710	600	12.0
LP 327 S-71-A 15-01-ECO-ACA	DIN (center hole)	327	710	750	15.0
LP 327 S-75-A 10-01-ECO-ACA	DIN (center hole)	327	750	500	10.0
LP 327 S-75-A 12-01-ECO-ACA	DIN (center hole)	327	750	600	12.0
LP 327 S-75-A 16-01-ECO-ACA	DIN (center hole)	327	750	800	16.0
LP 327 S-10-A 16-01-ECO-ACA	DIN (center hole)	327	1,000	800	16.0
LP 327 S-10-A 21-01-ECO-ACA	DIN (center hole)	327	1,000	1,100	21.0
LP 327 S-12-A 15-01-ECO-ACA	DIN (center hole)	327	1,200	750	15.0
LP 327 S-12-A 20-01-ECO-ACA	DIN (center hole)	327	1,200	1,000	20.0
LP 327 S-12-A 25-01-ECO-ACA	DIN (center hole)	327	1,200	1,300	25.0
LP 327 S-15-A 20-01-ECO-ACA	DIN (center hole)	327	1,500	1,000	20.0
LP 327 S-15-A 25-01-ECO-ACA	DIN (center hole)	327	1,500	1,300	25.0
LP 327 S-15-A 31-01-ECO-ACA	DIN (center hole)	327	1,500	1,600	31.0
LP 351 D-60-A 10-01-ECO-ACA	DIN (open)	351	600	500	10.0
LP 351 D-60-A 12-01-ECO-ACA	DIN (open)	351	600	600	12.0
LP 351 D-60-A 77-01-ECO-ACA	DIN (open)	351	600	390	7.7
LP 351 D-66-A 11-01-ECO-ACA	DIN (open)	351	660	550	11.0
LP 351 D-66-A 14-01-ECO-ACA	DIN (open)	351	660	700	14.0
LP 351 D-66-A 85-01-ECO-ACA	DIN (open)	351	660	430	8.5
LP 351 D-71-A 10-01-ECO-ACA	DIN (open)	351	710	500	10.0
LP 351 D-71-A 12-01-ECO-ACA	DIN (open)	351	710	600	12.0
LP 351 D-71-A 15-01-ECO-ACA	DIN (open)	351	710	750	15.0
LP 351 D-75-A 10-01-ECO-ACA	DIN (open)	351	750	500	10.0

KEY DATA	Mounting system	Nominal diameter [mm]	Nominal length [mm]	Nominal volume flow [m ³ /h]	Nominal filter area [m ²]
LP 351 D-75-A 12-01-ECO-ACA	DIN (open)	351	750	600	12.0
LP 351 D-75-A 16-01-ECO-ACA	DIN (open)	351	750	800	16.0
LP 351 D-10-A 13-01-ECO-ACA	DIN (open)	351	1,000	650	13.0
LP 351 D-10-A 16-01-ECO-ACA	DIN (open)	351	1,000	800	16.0
LP 351 D-10-A 21-01-ECO-ACA	DIN (open)	351	1,000	1,100	21.0
LP 351 D-12-A 15-01-ECO-ACA	DIN (open)	351	1,200	750	15.0
LP 351 D-12-A 20-01-ECO-ACA	DIN (open)	351	1,200	1,000	20.0
LP 351 D-12-A 25-01-ECO-ACA	DIN (open)	351	1,200	1,300	25.0
LP 351 D-15-A 20-01-ECO-ACA	DIN (open)	351	1,500	1,000	20.0
LP 351 D-15-A 25-01-ECO-ACA	DIN (open)	351	1,500	1,300	25.0
LP 351 D-15-A 31-01-ECO-ACA	DIN (open)	351	1,500	1,600	31.0
LP 351 S-10-A 13-01-ECO-ACA	DIN (center hole)	351	1,000	650	13.0
LP 351 S-60-A 10-01-ECO-ACA	DIN (center hole)	351	600	500	10.0
LP 351 S-60-A 12-01-ECO-ACA	DIN (center hole)	351	600	600	12.0
LP 351 S-60-A 77-01-ECO-ACA	DIN (center hole)	351	600	390	7.7
LP 351 S-66-A 11-01-ECO-ACA	DIN (center hole)	351	660	550	11.0
LP 351 S-66-A 14-01-ECO-ACA	DIN (center hole)	351	660	700	14.0
LP 351 S-66-A 85-01-ECO-ACA	DIN (center hole)	351	660	430	8.5
LP 351 S-71-A 10-01-ECO-ACA	DIN (center hole)	351	710	500	10.0
LP 351 S-71-A 12-01-ECO-ACA	DIN (center hole)	351	710	600	12.0
LP 351 S-71-A 15-01-ECO-ACA	DIN (center hole)	351	710	750	15.0
LP 351 S-75-A 10-01-ECO-ACA	DIN (center hole)	351	750	500	10.0
LP 351 S-75-A 12-01-ECO-ACA	DIN (center hole)	351	750	600	12.0
LP 351 S-75-A 16-01-ECO-ACA	DIN (center hole)	351	750	800	16.0
LP 351 S-10-A 16-01-ECO-ACA	DIN (center hole)	351	1,000	800	16.0
LP 351 S-10-A 21-01-ECO-ACA	DIN (center hole)	351	1,000	1,100	21.0
LP 351 S-12-A 15-01-ECO-ACA	DIN (center hole)	351	1,200	750	15.0
LP 351 S-12-A 20-01-ECO-ACA	DIN (center hole)	351	1,200	1,000	20.0
LP 351 S-12-A 25-01-ECO-ACA	DIN (center hole)	351	1,200	1,300	25.0
LP 351 S-15-A 20-01-ECO-ACA	DIN (center hole)	351	1,500	1,000	20.0
LP 351 S-15-A 25-01-ECO-ACA	DIN (center hole)	351	1,500	1,300	25.0
LP 351 S-15-A 31-01-ECO-ACA	DIN (center hole)	351	1,500	1,600	31.0

The nominal volume flow shown here corresponds to a typical, recommended value for a normally loaded system in the applications mentioned. Depending on the specific application, the optimal volume flow may vary upwards (e.g. coarse, non-abrasive dust) or downwards (e.g. thermal produced dust).

MEDIA AND CONSTRUCTION CHARACTERISTICS

- antistatic filter media, finished with a Freudenberg raster print on both sides, applied by carbon suspension, offer:
 - high operational dependability without any restrictions on filter performance
 - maintaining antistatic properties even when handling abrasive dusts or after being washed in conformity with our washing instructions
- robust Freudenberg filter design and quality.
- thermally bonded filter media flatTexx made from 100% PES (polyester).
- dust class M according to EN 60335-2-69:AA.
- all filters supplied with integrated support cage.
- resilient woven outer belt design, special versions and versions without outer belt on request.

FEATURES AND PLUSES

- the affordable entry into the world of cleanable quality filters from Freudenberg.
- no compromises on safety and mechanical resistance.
- humidity resistant: keeping solidity and stability in humid conditions.
- serving all typical mountings, lengths and diameters: big selection of available standard designs.
- compatible with original Freudenberg accessories: Pulse-Jet Reflectors (PJR), Filtering aid FHM 1500, Cartridge Protection Sleeves (CPS).

Please note: The suitability of LP Eco AX filter cartridges for the respective system or ATEX zone and proper installation is under responsibility of the user. Please refer to our self-declaration identifying the ATEX zones for which the LP Eco AX filter cartridges are certified.

The information or figures given are subject to tolerances due to normal production fluctuations. Our explicit written confirmation is required in each case for the correctness of the information. Subject to technical alterations. You will find instructions on how to handle and dispose of loaded filters in our information on product safety and eco-compatibility.

INNOVATING TOGETHER

Contact us

www.freudenberg-filter.com

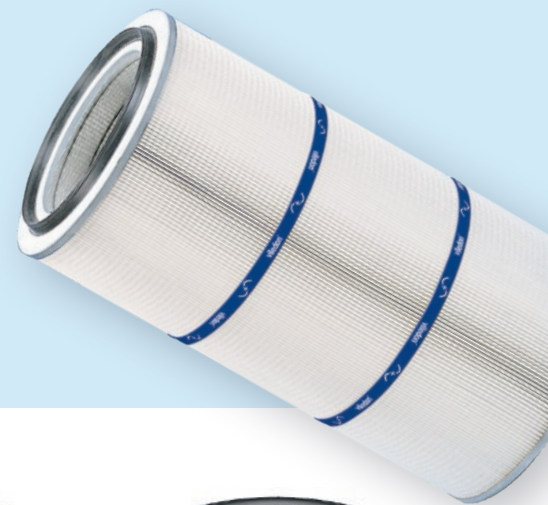
OVERVIEW OF INSTALLATION SYSTEMS

viledon®

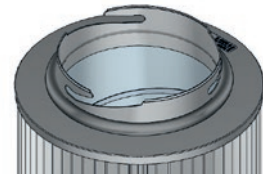
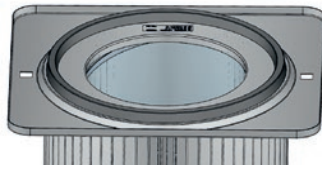
DIN

Features

- Simple installation using a tie-rod or a closure cover
- Safety and reliability thanks to continuously and directly foamed-on gaskets
- Optimum interaction of hardness, compression set, and geometry achieve reliable sealing effect in the operating range



DATA	DIN (200 mm)	DIN (327 mm)	DIN (351 mm)
Item number beginning with	LP 200 S / LP 200 D	LP 327 S / LP 327 D	LP 351 S / LP 351 D
Nominal diameter DIN version	200 mm	327 mm	351 mm
Connection diameter gasket	168 mm	260 mm	297 mm
Openings (optional)		open on one side (S) open on both sides (D)	
Gasket		open on both sides (D): optionally with gasket on both sides	
Installation system	Tie-rod (drill hole – base: 12 mm)	open on one side (S): Tie-rod (drill hole – base: 13 mm / 29 mm) or closed base open on both sides (D): for serial installation	Open on both sides (D): for serial installation
Special features ATEX version	–		open on both sides (D): conductive connecting brackets

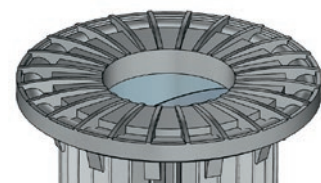
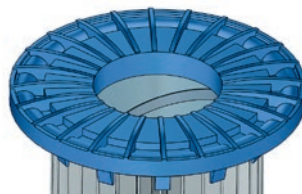
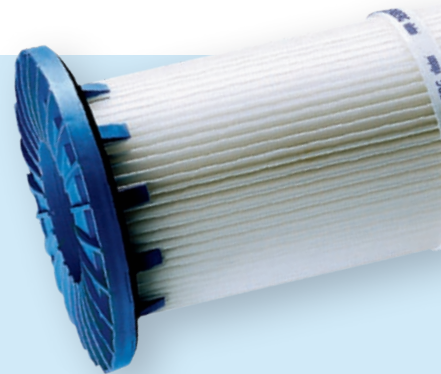


DATA	RECTANGULAR FLANGE (406 mm × 362 mm)	BAYONET (216 mm)
Item number beginning with	LP 324 Y	LP 327 B
Nominal diameter base	324 mm	
Connection diameter gasket	297 mm	229 mm
Form	Rectangular installation head, 406 mm × 362 mm × 12 mm	Bayonet, (Outer) diameter 216 mm
Bolt thickness	–	< 11 mm
Gasket	continuously foamed	soft round gasket for easy installation
Installation system	Plug-in system / slide systems raw-gas side installation	Bayonet system raw-gas side installation
Special features	Frame protrusion for defined maximum gasket compression	easy, tool-free installation

SNAP & FIX

Features

- Clean-gas side installation
- Snap-on hooks for easy installation without additional tools or aids
- Serve as filter bag replacement cartridges
- Structural securing of the gasket against overloading

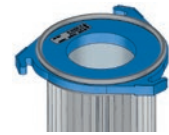
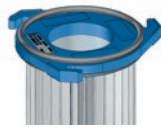
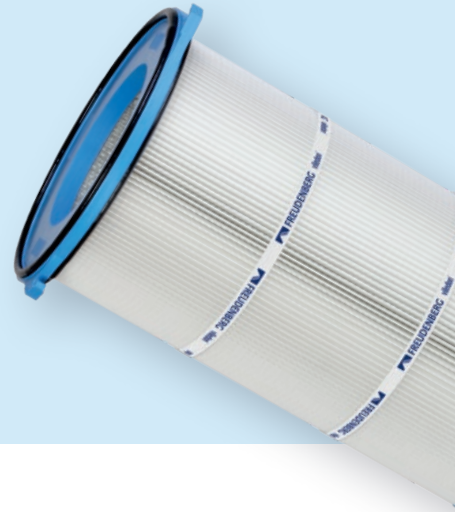


DATA	S&F (152 mm)	S&F (155 mm)
Item number beginning with	LP 152 B	LP 155 B
Connection diameter gasket	176 mm	
Suitable for perforated plate thickness	4 mm	
Installation opening	152 +0.5 / -1 mm	155 +0.5 / -1 mm
Special features	Filter bag replacement cartridge	

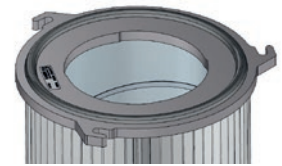
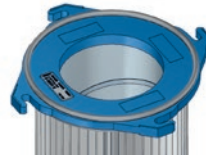
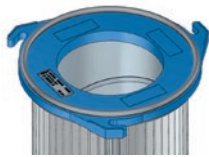
TWIST & FIX

Features

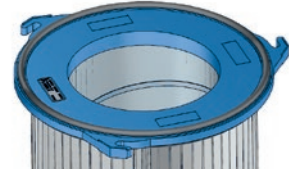
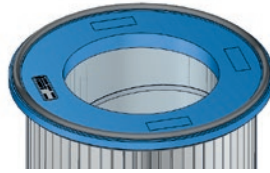
- Injection-molded flange made from glass fiber-reinforced polyamide
- Safety and reliability thanks to continuously and directly foamed-on gaskets
- Double gasket for installation on clean- and raw-gas side
- Minimized risk of failure thanks to dispensing with additional bonding components and seams



DATA	T&F (3 HOOKS, 180 mm)	T&F (WITHOUT HOOKS)	T&F (3 HOOKS, 204 mm)
Item number beginning with	LP 145 G	LP 145 F	LP 156 G
Nominal diameter base	145 mm		156 mm
Installation opening for clean-gas side installation	> 147 mm		≥ 160 mm
Connection diameter gasket	153 mm		171 mm
Hole circle	180 mm	–	204 mm
Bolt thickness	< 11 mm	–	< 11 mm
Installation system	three bolts (120°)	system-side clamping device	three bolts (120°)
Special features	Spacer ribs for defined maximum gasket compression	Filter bag replacement cartridge	Spacer ribs for defined maximum gasket compression



DATA	T&F (3 HOOKS, 264 mm)	T&F (4 HOOKS, 264 mm)	T&F (3 HOOKS, 366 mm)
Item number beginning with	LP 218 G	LP 218 H	LP 320 M
Nominal diameter base	218 mm		324 mm
Installation opening for clean-gas side installation	> 225 mm		–
Connection diameter gasket	232 mm		298 mm
Hole circle	264 mm		366 mm
Bolt thickness	< 13 mm		< 14 mm
Installation system	three bolts (120°)	four bolts (90°)	three bolts (120°)
Special features	Spacer ribs for defined maximum gasket compression		Continuously foamed-on gasket



DATA	T&F (WITHOUT HOOKS)	T&F (3 HOOKS, 392 mm)
Item number beginning with	LP 324 F	LP 324 G
Nominal diameter base	324 mm	
Installation opening for clean-gas side installation	> 330 mm	
Connection diameter gasket	345 mm	
Hole circle	–	392 mm
Bolt thickness	–	< 13 mm
Installation system	system-side clamping device	Three bolts (120°)
Special features	Filter bag replacement cartridge	Spacer ribs for defined maximum gasket compression

The information or figures given are subject to tolerances due to normal production fluctuations. Our explicit written confirmation is required in each case for the correctness of the information. Subject to technical alterations. You will find instructions on how to handle and dispose of loaded filters in our information on product safety and eco-compatibility.

FREUDENBERG FILTRATION TECHNOLOGIES

Contact us

www.freudenberg-filter.com

 **FREUDENBERG**
INNOVATING TOGETHER