

LP PRO AX SERIES

PROVEN PERFORMANCE AND QUALITY

APPLICATIONS

- in potentially explosive atmospheres
- in almost all industries:
wood, plastics and metal processing, textiles and paper industry, chemical industry incl. powder production, automotive, recycling and waste disposal, food industry etc.
- fits high demands in all dust removal units for mechanical processes, e.g. grinding, sawing, drilling, milling etc.
- fits high demands in all dust removal units for surface treatment or for demanding filtration applications of mechanical surface treatment, e.g. blasting systems, polishing etc.
- serves moderate to high demands in dust removal units with mixed applications for thermal process dusts
- serves moderate to high demands in dust removal units in electrode production in the battery manufacturing
- for filtration in transportation and filling applications



KEY DATA	Article number	Mounting system	Nominal diameter [mm]	Nominal length [mm]	Nominal volume flow [m³/h]	Nominal filter area [m²]
LP 145 F-60-A 27-16-ACA		T&F (no Hook)	145	600	160	2.7
LP 145 F-30-A 08-16-ACA		T&F (no Hook)	145	300	50	0.8
LP 145 F-30-A 10-16-ACA		T&F (no Hook)	145	300	60	1.0
LP 145 F-30-A 12-16-ACA		T&F (no Hook)	145	300	70	1.2
LP 145 F-60-A 16-16-ACA		T&F (no Hook)	145	600	100	1.6
LP 145 F-60-A 21-16-ACA	53588262	T&F (no Hook)	145	600	130	2.1
LP 145 F-10-A 27-16-ACA		T&F (no Hook)	145	1,000	160	2.7
LP 145 F-10-A 36-16-ACA		T&F (no Hook)	145	1,000	220	3.6
LP 145 F-10-A 45-16-ACA		T&F (no Hook)	145	1,000	270	4.5
LP 145 F-12-A 32-16-ACA		T&F (no Hook)	145	1,200	200	3.2
LP 145 F-12-A 43-16-ACA	53588241	T&F (no Hook)	145	1,200	260	4.3
LP 145 F-12-A 54-16-ACA		T&F (no Hook)	145	1,200	330	5.4
LP 145 F-15-A 40-16-ACA		T&F (no Hook)	145	1,500	240	4.0
LP 145 F-15-A 54-16-ACA		T&F (no Hook)	145	1,500	330	5.4
LP 145 F-15-A 67-16-ACA		T&F (no Hook)	145	1,500	410	6.7
LP 145 G-60-A 27-16-ACA		T&F (3 Hook, 180 mm)	145	600	160	2.7
LP 145 G-30-A 08-16-ACA		T&F (3 Hook, 180 mm)	145	300	50	0.8
LP 145 G-30-A 10-16-ACA		T&F (3 Hook, 180 mm)	145	300	60	1.0

KEY DATA	Article number	Mounting system	Nominal diameter [mm]	Nominal length [mm]	Nominal volume flow [m ³ /h]	Nominal filter area [m ²]
LP 145 G-30-A 12-16-ACA		T&F (3 Hook, 180 mm)	145	300	70	1.2
LP 145 G-60-A 16-16-ACA	53588261	T&F (3 Hook, 180 mm)	145	600	100	1.6
LP 145 G-60-A 21-16-ACA	53588260	T&F (3 Hook, 180 mm)	145	600	130	2.1
LP 145 G-10-A 27-16-ACA	53588282	T&F (3 Hook, 180 mm)	145	1,000	160	2.7
LP 145 G-10-A 36-16-ACA	53588272	T&F (3 Hook, 180 mm)	145	1,000	220	3.6
LP 145 G-10-A 45-16-ACA	53588271	T&F (3 Hook, 180 mm)	145	1,000	270	4.5
LP 145 G-12-A 32-16-ACA	53588240	T&F (3 Hook, 180 mm)	145	1,200	200	3.2
LP 145 G-12-A 43-16-ACA	53588239	T&F (3 Hook, 180 mm)	145	1,200	260	4.3
LP 145 G-12-A 54-16-ACA		T&F (3 Hook, 180 mm)	145	1,200	330	5.4
LP 145 G-15-A 40-16-ACA	53588269	T&F (3 Hook, 180 mm)	145	1,500	240	4.0
LP 145 G-15-A 54-16-ACA	53588268	T&F (3 Hook, 180 mm)	145	1,500	330	5.4
LP 145 G-15-A 67-16-ACA		T&F (3 Hook, 180 mm)	145	1,500	410	6.7
LP 152 B-60-A 27-16-ACA		S&F	152	600	160	2.7
LP 152 B-30-A 08-16-ACA		S&F	152	300	50	0.8
LP 152 B-30-A 10-16-ACA		S&F	152	300	60	1.0
LP 152 B-30-A 12-16-ACA		S&F	152	300	70	1.2
LP 152 B-60-A 16-16-ACA		S&F	152	600	100	1.6
LP 152 B-60-A 21-16-ACA		S&F	152	600	130	2.1
LP 152 B-10-A 27-16-ACA		S&F	152	1,000	160	2.7
LP 152 B-10-A 36-16-ACA		S&F	152	1,000	220	3.6
LP 152 B-10-A 45-16-ACA		S&F	152	1,000	270	4.5
LP 152 B-12-A 32-16-ACA		S&F	152	1,200	200	3.2
LP 152 B-12-A 43-16-ACA		S&F	152	1,200	260	4.3
LP 152 B-12-A 54-16-ACA		S&F	152	1,200	330	5.4
LP 152 B-15-A 40-16-ACA		S&F	152	1,500	240	4.0
LP 152 B-15-A 54-16-ACA		S&F	152	1,500	330	5.4
LP 152 B-15-A 67-16-ACA		S&F	152	1,500	410	6.7
LP 155 B-60-A 27-16-ACA		S&F	155	600	160	2.7

KEY DATA	Article number	Mounting system	Nominal diameter [mm]	Nominal length [mm]	Nominal volume flow [m ³ /h]	Nominal filter area [m ²]
LP 155 B-30-A 08-16-ACA		S&F	155	300	50	0.8
LP 155 B-30-A 10-16-ACA		S&F	155	300	60	1.0
LP 155 B-30-A 12-16-ACA		S&F	155	300	70	1.2
LP 155 B-60-A 16-16-ACA	53588258	S&F	155	600	100	1.6
LP 155 B-60-A 21-16-ACA	53588257	S&F	155	600	130	2.1
LP 155 B-10-A 27-16-ACA	53588281	S&F	155	1,000	160	2.7
LP 155 B-10-A 36-16-ACA		S&F	155	1,000	220	3.6
LP 155 B-10-A 45-16-ACA		S&F	155	1,000	270	4.5
LP 155 B-12-A 32-16-ACA		S&F	155	1,200	200	3.2
LP 155 B-12-A 43-16-ACA		S&F	155	1,200	260	4.3
LP 155 B-12-A 54-16-ACA		S&F	155	1,200	330	5.4
LP 155 B-15-A 40-16-ACA		S&F	155	1,500	240	4.0
LP 155 B-15-A 54-16-ACA		S&F	155	1,500	330	5.4
LP 155 B-15-A 67-16-ACA		S&F	155	1,500	410	6.7
LP 156 G-60-A 27-16-ACA		T&F (3 Hook, 204 mm)	156	600	160	2.7
LP 156 G-30-A 08-16-ACA		T&F (3 Hook, 204 mm)	156	300	50	0.8
LP 156 G-30-A 10-16-ACA		T&F (3 Hook, 204 mm)	156	300	60	1.0
LP 156 G-30-A 12-16-ACA		T&F (3 Hook, 204 mm)	156	300	70	1.2
LP 156 G-60-A 16-16-ACA		T&F (3 Hook, 204 mm)	156	600	100	1.6
LP 156 G-60-A 21-16-ACA		T&F (3 Hook, 204 mm)	156	600	130	2.1
LP 156 G-10-A 27-16-ACA		T&F (3 Hook, 204 mm)	156	1,000	160	2.7
LP 156 G-10-A 36-16-ACA	53588270	T&F (3 Hook, 204 mm)	156	1,000	220	3.6
LP 156 G-10-A 45-16-ACA		T&F (3 Hook, 204 mm)	156	1,000	270	4.5
LP 156 G-12-A 32-16-ACA		T&F (3 Hook, 204 mm)	156	1,200	200	3.2
LP 156 G-12-A 43-16-ACA		T&F (3 Hook, 204 mm)	156	1,200	260	4.3
LP 156 G-12-A 54-16-ACA		T&F (3 Hook, 204 mm)	156	1,200	330	5.4
LP 156 G-15-A 40-16-ACA		T&F (3 Hook, 204 mm)	156	1,500	240	4.0

KEY DATA	Article number	Mounting system	Nominal diameter [mm]	Nominal length [mm]	Nominal volume flow [m ³ /h]	Nominal filter area [m ²]
LP 156 G-15-A 54-16-ACA		T&F (3 Hook, 204 mm)	156	1,500	330	5.4
LP 156 G-15-A 67-16-ACA		T&F (3 Hook, 204 mm)	156	1,500	410	6.7
LP 218 G-60-A 50-16-ACA	53588256	T&F (3 Hook, 264 mm)	218	600	310	5.0
LP 218 G-30-A 15-16-ACA		T&F (3 Hook, 264 mm)	218	300	90	1.5
LP 218 G-30-A 24-16-ACA		T&F (3 Hook, 264 mm)	218	300	150	2.4
LP 218 G-60-A 30-16-ACA		T&F (3 Hook, 264 mm)	218	600	180	3.0
LP 218 G-10-A 50-16-ACA	53588279	T&F (3 Hook, 264 mm)	218	1,000	310	5.0
LP 218 G-10-A 83-16-ACA		T&F (3 Hook, 264 mm)	218	1,000	510	8.3
LP 218 G-12-A 10-16-ACA		T&F (3 Hook, 264 mm)	218	1,200	610	10.0
LP 218 G-12-A 60-16-ACA	53588236	T&F (3 Hook, 264 mm)	218	1,200	370	6.0
LP 218 G-15-A 12-16-ACA		T&F (3 Hook, 264 mm)	218	1,500	730	12.0
LP 218 G-15-A 75-16-ACA		T&F (3 Hook, 264 mm)	218	1,500	460	7.5
LP 218 H-60-A 50-16-ACA		T&F (4 Hook, 264 mm)	218	600	310	5.0
LP 218 H-30-A 15-16-ACA		T&F (4 Hook, 264 mm)	218	300	90	1.5
LP 218 H-30-A 24-16-ACA		T&F (4 Hook, 264 mm)	218	300	150	2.4
LP 218 H-60-A 30-16-ACA	53588255	T&F (4 Hook, 264 mm)	218	600	180	3.0
LP 218 H-10-A 50-16-ACA	53588277	T&F (4 Hook, 264 mm)	218	1,000	310	5.0
LP 218 H-10-A 83-16-ACA		T&F (4 Hook, 264 mm)	218	1,000	510	8.3
LP 218 H-12-A 10-16-ACA		T&F (4 Hook, 264 mm)	218	1,200	610	10.0
LP 218 H-12-A 60-16-ACA		T&F (4 Hook, 264 mm)	218	1,200	370	6.0
LP 218 H-15-A 12-16-ACA		T&F (4 Hook, 264 mm)	218	1,500	730	12.0
LP 218 H-15-A 75-16-ACA		T&F (4 Hook, 264 mm)	218	1,500	460	7.5

KEY DATA	Article number	Mounting system	Nominal diameter [mm]	Nominal length [mm]	Nominal volume flow [m ³ /h]	Nominal filter area [m ²]
LP 320 M-66-A 85-16-ACA		3 Hook, 366 mm	320	660	520	8.5
LP 320 M-60-A 10-16-ACA		3 Hook, 366 mm	320	600	610	10.0
LP 320 M-60-A 12-16-ACA		3 Hook, 366 mm	320	600	730	12.0
LP 320 M-60-A 77-16-ACA		3 Hook, 366 mm	320	600	470	7.7
LP 320 M-66-A 11-16-ACA		3 Hook, 366 mm	320	660	670	11.0
LP 320 M-66-A 14-16-ACA		3 Hook, 366 mm	320	660	850	14.0
LP 320 M-10-A 13-16-ACA		3 Hook, 366 mm	320	1,000	790	13.0
LP 320 M-10-A 16-16-ACA		3 Hook, 366 mm	320	1,000	980	16.0
LP 320 M-10-A 21-16-ACA		3 Hook, 366 mm	320	1,000	1,300	21.0
LP 320 M-12-A 15-16-ACA		3 Hook, 366 mm	320	1,200	920	15.0
LP 320 M-12-A 20-16-ACA	53597576	3 Hook, 366 mm	320	1,200	1,200	20.0
LP 320 M-12-A 25-16-ACA		3 Hook, 366 mm	320	1,200	1,500	25.0
LP 320 M-15-A 20-16-ACA		3 Hook, 366 mm	320	1,500	1,200	20.0
LP 320 M-15-A 25-16-ACA		3 Hook, 366 mm	320	1,500	1,500	25.0
LP 320 M-15-A 31-16-ACA		3 Hook, 366 mm	320	1,500	1,900	31.0
LP 324 F-66-A 85-16-ACA		T&F (no Hook)	324	660	520	8.5
LP 324 F-60-A 10-16-ACA		T&F (no Hook)	324	600	610	10.0
LP 324 F-60-A 12-16-ACA		T&F (no Hook)	324	600	730	12.0
LP 324 F-60-A 77-16-ACA		T&F (no Hook)	324	600	470	7.7
LP 324 F-66-A 11-16-ACA		T&F (no Hook)	324	660	670	11.0
LP 324 F-66-A 14-16-ACA		T&F (no Hook)	324	660	850	14.0
LP 324 F-10-A 13-16-ACA		T&F (no Hook)	324	1,000	790	13.0
LP 324 F-10-A 16-16-ACA		T&F (no Hook)	324	1,000	980	16.0
LP 324 F-10-A 21-16-ACA		T&F (no Hook)	324	1,000	1,300	21.0
LP 324 F-12-A 15-16-ACA		T&F (no Hook)	324	1,200	920	15.0
LP 324 F-12-A 20-16-ACA		T&F (no Hook)	324	1,200	1,200	20.0
LP 324 F-12-A 25-16-ACA		T&F (no Hook)	324	1,200	1,500	25.0
LP 324 F-15-A 20-16-ACA		T&F (no Hook)	324	1,500	1,200	20.0
LP 324 F-15-A 25-16-ACA		T&F (no Hook)	324	1,500	1,500	25.0
LP 324 F-15-A 31-16-ACA		T&F (no Hook)	324	1,500	1,900	31.0
LP 324 G-66-A 85-16-ACA		T&F (3 Hook, 392 mm)	324	660	520	8.5
LP 324 G-60-A 10-16-ACA	53588254	T&F (3 Hook, 392 mm)	324	600	610	10.0
LP 324 G-60-A 12-16-ACA	53588253	T&F (3 Hook, 392 mm)	324	600	730	12.0

KEY DATA	Article number	Mounting system	Nominal diameter [mm]	Nominal length [mm]	Nominal volume flow [m ³ /h]	Nominal filter area [m ²]
LP 324 G-60-A 77-16-ACA	53588252	T&F (3 Hook, 392 mm)	324	600	470	7.7
LP 324 G-66-A 11-16-ACA		T&F (3 Hook, 392 mm)	324	660	670	11.0
LP 324 G-66-A 14-16-ACA		T&F (3 Hook, 392 mm)	324	660	850	14.0
LP 324 G-10-A 13-16-ACA	53588276	T&F (3 Hook, 392 mm)	324	1,000	790	13.0
LP 324 G-10-A 16-16-ACA	53588275	T&F (3 Hook, 392 mm)	324	1,000	980	16.0
LP 324 G-10-A 21-16-ACA	53588274	T&F (3 Hook, 392 mm)	324	1,000	1,300	21.0
LP 324 G-12-A 15-16-ACA		T&F (3 Hook, 392 mm)	324	1,200	920	15.0
LP 324 G-12-A 20-16-ACA	53588234	T&F (3 Hook, 392 mm)	324	1,200	1,200	20.0
LP 324 G-12-A 25-16-ACA	53588228	T&F (3 Hook, 392 mm)	324	1,200	1,500	25.0
LP 324 G-15-A 20-16-ACA		T&F (3 Hook, 392 mm)	324	1,500	1,200	20.0
LP 324 G-15-A 25-16-ACA	53588265	T&F (3 Hook, 392 mm)	324	1,500	1,500	25.0
LP 324 G-15-A 31-16-ACA		T&F (3 Hook, 392 mm)	324	1,500	1,900	31.0
LP 324 Y-66-A 85-16-ACA		Rectangle Flange (406 mm x 362 mm)	324	660	520	8.5
LP 324 Y-60-A 10-16-ACA		Rectangle Flange (406 mm x 362 mm)	324	600	610	10.0
LP 324 Y-60-A 12-16-ACA		Rectangle Flange (406 mm x 362 mm)	324	600	730	12.0
LP 324 Y-60-A 77-16-ACA		Rectangle Flange (406 mm x 362 mm)	324	600	470	7.7
LP 324 Y-66-A 11-16-ACA		Rectangle Flange (406 mm x 362 mm)	324	660	670	11.0
LP 324 Y-66-A 14-16-ACA		Rectangle Flange (406 mm x 362 mm)	324	660	850	14.0
LP 324 Y-10-A 13-16-ACA		Rectangle Flange (406 mm x 362 mm)	324	1,000	790	13.0

KEY DATA	Article number	Mounting system	Nominal diameter [mm]	Nominal length [mm]	Nominal volume flow [m ³ /h]	Nominal filter area [m ²]
LP 324 Y-10-A 16-16-ACA		Rectangle Flange (406 mm x 362 mm)	324	1,000	980	16.0
LP 324 Y-10-A 21-16-ACA		Rectangle Flange (406 mm x 362 mm)	324	1,000	1,300	21.0
LP 324 Y-12-A 15-16-ACA		Rectangle Flange (406 mm x 362 mm)	324	1,200	920	15.0
LP 324 Y-12-A 20-16-ACA		Rectangle Flange (406 mm x 362 mm)	324	1,200	1,200	20.0
LP 324 Y-12-A 25-16-ACA		Rectangle Flange (406 mm x 362 mm)	324	1,200	1,500	25.0
LP 324 Y-15-A 20-16-ACA		Rectangle Flange (406 mm x 362 mm)	324	1,500	1,200	20.0
LP 324 Y-15-A 25-16-ACA		Rectangle Flange (406 mm x 362 mm)	324	1,500	1,500	25.0
LP 324 Y-15-A 31-16-ACA		Rectangle Flange (406 mm x 362 mm)	324	1,500	1,900	31.0
LP 327 B-75-A 16-16-ACA		Bayonet	327	750	980	16.0
LP 327 B-60-A 10-16-ACA		Bayonet	327	600	610	10.0
LP 327 B-60-A 12-16-ACA		Bayonet	327	600	730	12.0
LP 327 B-60-A 77-16-ACA		Bayonet	327	600	470	7.7
LP 327 B-66-A 11-16-ACA		Bayonet	327	660	670	11.0
LP 327 B-66-A 14-16-ACA		Bayonet	327	660	850	14.0
LP 327 B-66-A 85-16-ACA		Bayonet	327	660	520	8.5
LP 327 B-71-A 10-16-ACA		Bayonet	327	710	610	10.0
LP 327 B-71-A 12-16-ACA		Bayonet	327	710	730	12.0
LP 327 B-71-A 15-16-ACA		Bayonet	327	710	920	15.0
LP 327 B-75-A 10-16-ACA		Bayonet	327	750	610	10.0
LP 327 B-75-A 12-16-ACA		Bayonet	327	750	730	12.0
LP 327 B-10-A 13-16-ACA		Bayonet	327	1,000	790	13.0
LP 327 B-10-A 16-16-ACA		Bayonet	327	1,000	980	16.0
LP 327 B-10-A 21-16-ACA		Bayonet	327	1,000	1,300	21.0
LP 327 B-12-A 15-16-ACA		Bayonet	327	1,200	920	15.0
LP 327 B-12-A 20-16-ACA		Bayonet	327	1,200	1,200	20.0

KEY DATA	Article number	Mounting system	Nominal diameter [mm]	Nominal length [mm]	Nominal volume flow [m ³ /h]	Nominal filter area [m ²]
LP 327 B-12-A 25-16-ACA		Bayonet	327	1,200	1,500	25.0
LP 327 B-15-A 20-16-ACA		Bayonet	327	1,500	1,200	20.0
LP 327 B-15-A 25-16-ACA		Bayonet	327	1,500	1,500	25.0
LP 327 B-15-A 31-16-ACA		Bayonet	327	1,500	1,900	31.0
LP 327 D-75-A 16-16-ACA		DIN (open)	327	750	980	16.0
LP 327 D-60-A 10-16-ACA	53588251	DIN (open)	327	600	610	10.0
LP 327 D-60-A 12-16-ACA	53609947	DIN (open)	327	600	730	12.0
LP 327 D-60-A 77-16-ACA		DIN (open)	327	600	470	7.7
LP 327 D-66-A 11-16-ACA	53588212	DIN (open)	327	660	670	11.0
LP 327 D-66-A 14-16-ACA	53588211	DIN (open)	327	660	850	14.0
LP 327 D-66-A 85-16-ACA		DIN (open)	327	660	520	8.5
LP 327 D-71-A 10-16-ACA		DIN (open)	327	710	610	10.0
LP 327 D-71-A 12-16-ACA		DIN (open)	327	710	730	12.0
LP 327 D-71-A 15-16-ACA		DIN (open)	327	710	920	15.0
LP 327 D-75-A 10-16-ACA		DIN (open)	327	750	610	10.0
LP 327 D-75-A 12-16-ACA		DIN (open)	327	750	730	12.0
LP 327 D-10-A 13-16-ACA		DIN (open)	327	1,000	790	13.0
LP 327 D-10-A 16-16-ACA		DIN (open)	327	1,000	980	16.0
LP 327 D-10-A 21-16-ACA		DIN (open)	327	1,000	1,300	21.0
LP 327 D-12-A 15-16-ACA		DIN (open)	327	1,200	920	15.0
LP 327 D-12-A 20-16-ACA		DIN (open)	327	1,200	1,200	20.0
LP 327 D-12-A 25-16-ACA		DIN (open)	327	1,200	1,500	25.0
LP 327 D-15-A 20-16-ACA		DIN (open)	327	1,500	1,200	20.0
LP 327 D-15-A 25-16-ACA		DIN (open)	327	1,500	1,500	25.0
LP 327 D-15-A 31-16-ACA		DIN (open)	327	1,500	1,900	31.0
LP 327 S-75-A 16-16-ACA		DIN (center hole)	327	750	980	16.0
LP 327 S-60-A 10-16-ACA	53588250	DIN (center hole)	327	600	610	10.0
LP 327 S-60-A 12-16-ACA	53588249	DIN (center hole)	327	600	730	12.0
LP 327 S-60-A 77-16-ACA	53588243	DIN (center hole)	327	600	470	7.7
LP 327 S-66-A 11-16-ACA	53588210	DIN (center hole)	327	660	670	11.0
LP 327 S-66-A 14-16-ACA	53588209	DIN (center hole)	327	660	850	14.0
LP 327 S-66-A 85-16-ACA		DIN (center hole)	327	660	520	8.5
LP 327 S-71-A 10-16-ACA		DIN (center hole)	327	710	610	10.0
LP 327 S-71-A 12-16-ACA		DIN (center hole)	327	710	730	12.0
LP 327 S-71-A 15-16-ACA		DIN (center hole)	327	710	920	15.0
LP 327 S-75-A 10-16-ACA		DIN (center hole)	327	750	610	10.0

KEY DATA	Article number	Mounting system	Nominal diameter [mm]	Nominal length [mm]	Nominal volume flow [m ³ /h]	Nominal filter area [m ²]
LP 327 S-75-A 12-16-ACA		DIN (center hole)	327	750	730	12.0
LP 327 S-10-A 13-16-ACA		DIN (center hole)	327	1,000	790	13.0
LP 327 S-10-A 16-16-ACA		DIN (center hole)	327	1,000	980	16.0
LP 327 S-10-A 21-16-ACA	53588273	DIN (center hole)	327	1,000	1,300	21.0
LP 327 S-12-A 15-16-ACA	53588227	DIN (center hole)	327	1,200	920	15.0
LP 327 S-12-A 20-16-ACA	53588226	DIN (center hole)	327	1,200	1,200	20.0
LP 327 S-12-A 25-16-ACA	53588225	DIN (center hole)	327	1,200	1,500	25.0
LP 327 S-15-A 20-16-ACA		DIN (center hole)	327	1,500	1,200	20.0
LP 327 S-15-A 25-16-ACA		DIN (center hole)	327	1,500	1,500	25.0
LP 327 S-15-A 31-16-ACA		DIN (center hole)	327	1,500	1,900	31.0
LP 351 D-75-A 16-16-ACA		DIN (open)	351	750	980	16.0
LP 351 D-60-A 10-16-ACA		DIN (open)	351	600	610	10.0
LP 351 D-60-A 12-16-ACA		DIN (open)	351	600	730	12.0
LP 351 D-60-A 77-16-ACA		DIN (open)	351	600	470	7.7
LP 351 D-66-A 11-16-ACA		DIN (open)	351	660	670	11.0
LP 351 D-66-A 14-16-ACA	53613648	DIN (open)	351	660	850	14.0
LP 351 D-66-A 85-16-ACA		DIN (open)	351	660	520	8.5
LP 351 D-71-A 10-16-ACA		DIN (open)	351	710	610	10.0
LP 351 D-71-A 12-16-ACA		DIN (open)	351	710	730	12.0
LP 351 D-71-A 15-16-ACA		DIN (open)	351	710	920	15.0
LP 351 D-75-A 10-16-ACA		DIN (open)	351	750	610	10.0
LP 351 D-75-A 12-16-ACA		DIN (open)	351	750	730	12.0
LP 351 D-10-A 13-16-ACA		DIN (open)	351	1,000	790	13.0
LP 351 D-10-A 16-16-ACA		DIN (open)	351	1,000	980	16.0
LP 351 D-10-A 21-16-ACA		DIN (open)	351	1,000	1,300	21.0
LP 351 D-12-A 15-16-ACA		DIN (open)	351	1,200	920	15.0
LP 351 D-12-A 20-16-ACA		DIN (open)	351	1,200	1,200	20.0
LP 351 D-12-A 25-16-ACA		DIN (open)	351	1,200	1,500	25.0
LP 351 D-15-A 20-16-ACA		DIN (open)	351	1,500	1,200	20.0
LP 351 D-15-A 25-16-ACA		DIN (open)	351	1,500	1,500	25.0
LP 351 D-15-A 31-16-ACA		DIN (open)	351	1,500	1,900	31.0
LP 351 S-75-A 16-16-ACA		DIN (center hole)	351	750	980	16.0
LP 351 S-60-A 10-16-ACA		DIN (center hole)	351	600	610	10.0
LP 351 S-60-A 12-16-ACA		DIN (center hole)	351	600	730	12.0
LP 351 S-60-A 77-16-ACA		DIN (center hole)	351	600	470	7.7
LP 351 S-66-A 11-16-ACA		DIN (center hole)	351	660	670	11.0

KEY DATA	Article number	Mounting system	Nominal diameter [mm]	Nominal length [mm]	Nominal volume flow [m ³ /h]	Nominal filter area [m ²]
LP 351 S-66-A 14-16-ACA	53613032	DIN (center hole)	351	660	850	14.0
LP 351 S-66-A 85-16-ACA		DIN (center hole)	351	660	520	8.5
LP 351 S-71-A 10-16-ACA		DIN (center hole)	351	710	610	10.0
LP 351 S-71-A 12-16-ACA		DIN (center hole)	351	710	730	12.0
LP 351 S-71-A 15-16-ACA		DIN (center hole)	351	710	920	15.0
LP 351 S-75-A 10-16-ACA		DIN (center hole)	351	750	610	10.0
LP 351 S-75-A 12-16-ACA		DIN (center hole)	351	750	730	12.0
LP 351 S-10-A 13-16-ACA		DIN (center hole)	351	1,000	790	13.0
LP 351 S-10-A 16-16-ACA		DIN (center hole)	351	1,000	980	16.0
LP 351 S-10-A 21-16-ACA		DIN (center hole)	351	1,000	1,300	21.0
LP 351 S-12-A 15-16-ACA		DIN (center hole)	351	1,200	920	15.0
LP 351 S-12-A 20-16-ACA		DIN (center hole)	351	1,200	1,200	20.0
LP 351 S-12-A 25-16-ACA		DIN (center hole)	351	1,200	1,500	25.0
LP 351 S-15-A 20-16-ACA		DIN (center hole)	351	1,500	1,200	20.0
LP 351 S-15-A 25-16-ACA		DIN (center hole)	351	1,500	1,500	25.0
LP 351 S-15-A 31-16-ACA		DIN (center hole)	351	1,500	1,900	31.0

The nominal volume flow shown here corresponds to a typical, recommended value for a normally loaded system in the applications mentioned. Depending on the specific application, the optimal volume flow may vary upwards (e.g. coarse, non-abrasive dust) or downwards (e.g. thermal produced dust).

MEDIA AND CHARACTERISTIC

- antistatic filter media, finished with a Freudenberg raster print on both sides, applied by carbon suspension, offer:
 - high operational dependability without any restrictions on filter performance
 - maintaining antistatic properties even when handling abrasive dusts or even after being washed in conformity with our washing instructions
- original Viledon® sinus filtermedia: 100% available filter area, corrugation and thermally bonded with two-component fibre.
- exklusive filtermedia produced inhouse at Freudenberg.
- Dust Class M according to EN 60335-2-69:AA.
- all filters supplied with integrated support cage.
- resilient woven outer belt design, special versions and versions without outer belt on request.



FEATURES

- corrugation significantly downsizes the pressure drop by prevention of a pleat collapse during operation.
- pleat stabilization concept is thermally stable up to 90 °C, and remains stable even under alternating loads of filtration and cleaning phases.
- humidity resistant: keeping solidity and stability in humid conditions.
- longer service life and reduced maintenance costs.
- serving all typical mountings, lengths and diameters: big selection of available standard designs.
- compatible with original Freudenberg accessories: Pulse-Jet Reflectors (PJR), Filtering aid FHM 1500, Cartridge Protection Sleeves (CPS).

Please note: The suitability of LP Pro AX filter cartridges for the respective system or ATEX zone and proper installation is under responsibility of the user. Please refer to our self-declaration identifying the ATEX zones for which the LP Pro AX filter cartridges are certified.

The information or figures given are subject to tolerances due to normal production fluctuations. Our explicit written confirmation is required in each case for the correctness of the information. Subject to technical alterations. You will find instructions on how to handle and dispose of loaded filters in our information on product safety and eco-compatibility.

INNOVATING TOGETHER

Contact us

www.freudenberg-filter.com

 **FREUDENBERG**
FILTRATION TECHNOLOGIES

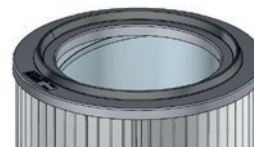
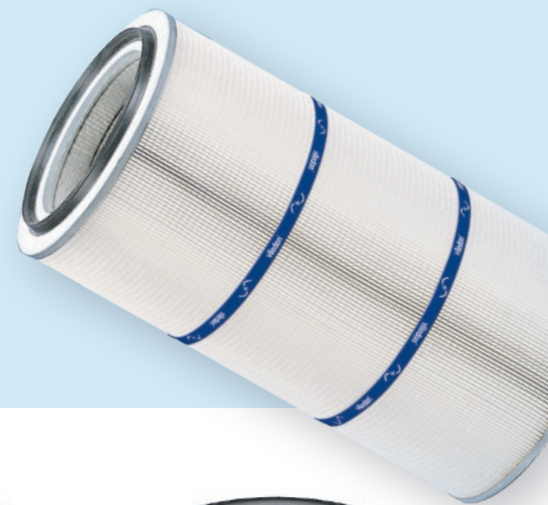
OVERVIEW OF INSTALLATION SYSTEMS

viledon®

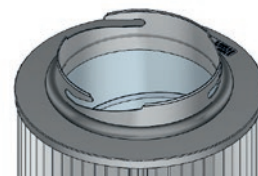
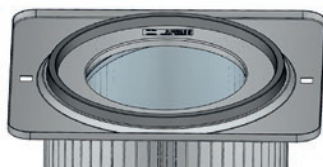
DIN

Features

- Simple installation using a tie-rod or a closure cover
- Safety and reliability thanks to continuously and directly foamed-on gaskets
- Optimum interaction of hardness, compression set, and geometry achieve reliable sealing effect in the operating range



DATA	DIN (200 mm)	DIN (327 mm)	DIN (351 mm)
Item number beginning with	LP 200 S / LP 200 D	LP 327 S / LP 327 D	LP 351 S / LP 351 D
Nominal diameter DIN version	200 mm	327 mm	351 mm
Connection diameter gasket	168 mm	260 mm	297 mm
Openings (optional)		open on one side (S) open on both sides (D)	
Gasket		open on both sides (D): optionally with gasket on both sides	
Installation system	Tie-rod (drill hole – base: 12 mm)	open on one side (S): Tie-rod (drill hole – base: 13 mm / 29 mm) or closed base open on both sides (D): for serial installation	Open on both sides (D): for serial installation
Special features ATEX version	–		open on both sides (D): conductive connecting brackets

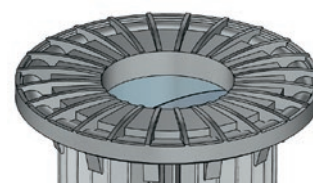
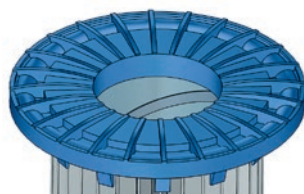
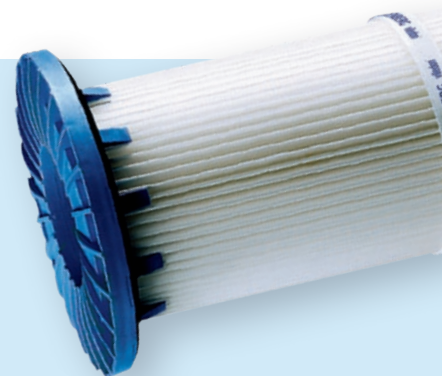


DATA	RECTANGULAR FLANGE (406 mm × 362 mm)	BAYONET (216 mm)
Item number beginning with	LP 324 Y	LP 327 B
Nominal diameter base	324 mm	
Connection diameter gasket	297 mm	229 mm
Form	Rectangular installation head, 406 mm × 362 mm × 12 mm	Bayonet, (Outer) diameter 216 mm
Bolt thickness	–	< 11 mm
Gasket	continuously foamed	soft round gasket for easy installation
Installation system	Plug-in system / slide systems raw-gas side installation	Bayonet system raw-gas side installation
Special features	Frame protrusion for defined maximum gasket compression	easy, tool-free installation

SNAP & FIX

Features

- Clean-gas side installation
- Snap-on hooks for easy installation without additional tools or aids
- Serve as filter bag replacement cartridges
- Structural securing of the gasket against overloading

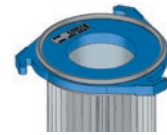
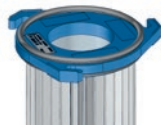
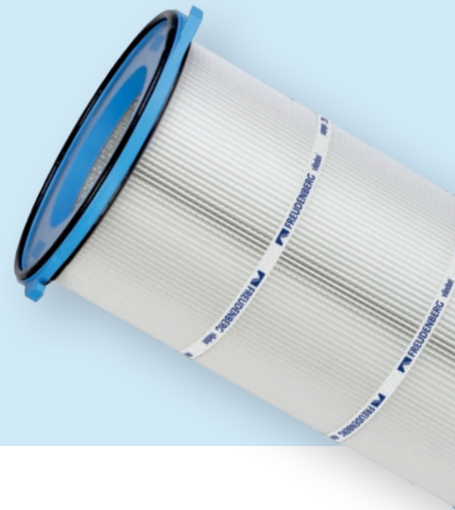


DATA	S&F (152 mm)	S&F (155 mm)
Item number beginning with	LP 152 B	LP 155 B
Connection diameter gasket	176 mm	
Suitable for perforated plate thickness	4 mm	
Installation opening	152 +0.5 / -1 mm	155 +0.5 / -1 mm
Special features	Filter bag replacement cartridge	

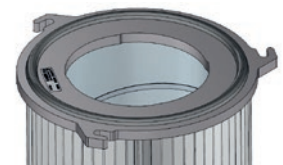
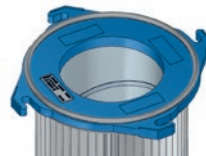
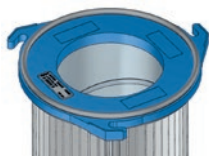
TWIST & FIX

Features

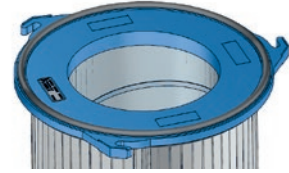
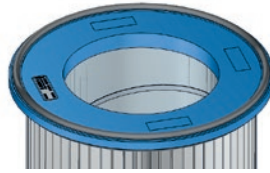
- Injection-molded flange made from glass fiber-reinforced polyamide
- Safety and reliability thanks to continuously and directly foamed-on gaskets
- Double gasket for installation on clean- and raw-gas side
- Minimized risk of failure thanks to dispensing with additional bonding components and seams



DATA	T&F (3 HOOKS, 180 mm)	T&F (WITHOUT HOOKS)	T&F (3 HOOKS, 204 mm)
Item number beginning with	LP 145 G	LP 145 F	LP 156 G
Nominal diameter base	145 mm		156 mm
Installation opening for clean-gas side installation	> 147 mm		≥ 160 mm
Connection diameter gasket	153 mm		171 mm
Hole circle	180 mm	–	204 mm
Bolt thickness	< 11 mm	–	< 11 mm
Installation system	three bolts (120°)	system-side clamping device	three bolts (120°)
Special features	Spacer ribs for defined maximum gasket compression	Filter bag replacement cartridge	Spacer ribs for defined maximum gasket compression



DATA	T&F (3 HOOKS, 264 mm)	T&F (4 HOOKS, 264 mm)	T&F (3 HOOKS, 366 mm)
Item number beginning with	LP 218 G	LP 218 H	LP 320 M
Nominal diameter base	218 mm		324 mm
Installation opening for clean-gas side installation	> 225 mm		–
Connection diameter gasket	232 mm		298 mm
Hole circle	264 mm		366 mm
Bolt thickness	< 13 mm		< 14 mm
Installation system	three bolts (120°)	four bolts (90°)	three bolts (120°)
Special features	Spacer ribs for defined maximum gasket compression		Continuously foamed-on gasket



DATA	T&F (WITHOUT HOOKS)	T&F (3 HOOKS, 392 mm)
Item number beginning with	LP 324 F	LP 324 G
Nominal diameter base	324 mm	
Installation opening for clean-gas side installation	> 330 mm	
Connection diameter gasket	345 mm	
Hole circle	–	392 mm
Bolt thickness	–	< 13 mm
Installation system	system-side clamping device	Three bolts (120°)
Special features	Filter bag replacement cartridge	Spacer ribs for defined maximum gasket compression

The information or figures given are subject to tolerances due to normal production fluctuations. Our explicit written confirmation is required in each case for the correctness of the information. Subject to technical alterations. You will find instructions on how to handle and dispose of loaded filters in our information on product safety and eco-compatibility.

FREUDENBERG FILTRATION TECHNOLOGIES

Contact us

www.freudenberg-filter.com

 **FREUDENBERG**
INNOVATING TOGETHER