

LP COMPLETE SERIES

viledon®

HIGHLY EFFICIENT AGAINST SMOKE AND FINE DUSTS

APPLICATIONS

- in almost all industries:
wood, plastics and metal processing, textiles and paper industry, chemical industry incl. powder production, automotive, recycling and waste disposal, etc.
- fits very high demands in all dust removal units for thermal processes, e.g. grinding, sawing, drilling, milling, plasma and laser cutting etc.
- fits very high demands in all dust removal units for critical mechanical processes, e.g. polishing or brushing
- for very high demands in all dust removal units for surface treatment
- serves high to very high demands in dust removal units in electrode production in the battery manufacturing
- very fine dust handling from various applications



KEY DATA	Article number	Mounting system	Nominal diameter [mm]	Nominal length [mm]	Nominal volume flow [m³/h]	Nominal filter area [m²]
LP 145 F-30-A 08-77-ACA		T&F (no Hook)	145	300	60	0.8
LP 145 F-30-A 10-77-ACA		T&F (no Hook)	145	300	70	1.0
LP 145 F-30-A 12-77-ACA		T&F (no Hook)	145	300	90	1.2
LP 145 F-60-A 16-77-ACA		T&F (no Hook)	145	600	120	1.6
LP 145 F-60-A 21-77-ACA		T&F (no Hook)	145	600	150	2.1
LP 145 F-60-A 27-77-ACA		T&F (no Hook)	145	600	190	2.7
LP 145 F-10-A 27-77-ACA		T&F (no Hook)	145	1,000	190	2.7
LP 145 F-10-A 36-77-ACA		T&F (no Hook)	145	1,000	260	3.6
LP 145 F-10-A 45-77-ACA		T&F (no Hook)	145	1,000	320	4.5
LP 145 F-12-A 32-77-ACA		T&F (no Hook)	145	1,200	230	3.2
LP 145 F-12-A 43-77-ACA		T&F (no Hook)	145	1,200	310	4.3
LP 145 F-12-A 54-77-ACA		T&F (no Hook)	145	1,200	390	5.4
LP 145 F-15-A 40-77-ACA		T&F (no Hook)	145	1,500	290	4.0
LP 145 F-15-A 54-77-ACA		T&F (no Hook)	145	1,500	390	5.4
LP 145 F-15-A 67-77-ACA		T&F (no Hook)	145	1,500	480	6.7

KEY DATA	Article number	Mounting system	Nominal diameter [mm]	Nominal length [mm]	Nominal volume flow [m ³ /h]	Nominal filter area [m ²]
LP 145 G-30-A 08-77-ACA		T&F (3 Hook, 180 mm)	145	300	60	0.8
LP 145 G-30-A 10-77-ACA		T&F (3 Hook, 180 mm)	145	300	70	1.0
LP 145 G-30-A 12-77-ACA		T&F (3 Hook, 180 mm)	145	300	90	1.2
LP 145 G-60-A 16-77-ACA		T&F (3 Hook, 180 mm)	145	600	120	1.6
LP 145 G-60-A 21-77-ACA	73077007	T&F (3 Hook, 180 mm)	145	600	150	2.1
LP 145 G-60-A 27-77-ACA	73077236	T&F (3 Hook, 180 mm)	145	600	190	2.7
LP 145 G-10-A 27-77-ACA	73077089	T&F (3 Hook, 180 mm)	145	1,000	190	2.7
LP 145 G-10-A 36-77-ACA		T&F (3 Hook, 180 mm)	145	1,000	260	3.6
LP 145 G-10-A 45-77-ACA		T&F (3 Hook, 180 mm)	145	1,000	320	4.5
LP 145 G-12-A 32-77-ACA	73076327	T&F (3 Hook, 180 mm)	145	1,200	230	3.2
LP 145 G-12-A 43-77-ACA	73077151	T&F (3 Hook, 180 mm)	145	1,200	310	4.3
LP 145 G-12-A 54-77-ACA	73077152	T&F (3 Hook, 180 mm)	145	1,200	390	5.4
LP 145 G-15-A 40-77-ACA	73077316	T&F (3 Hook, 180 mm)	145	1,500	290	4.0
LP 145 G-15-A 54-77-ACA	73077141	T&F (3 Hook, 180 mm)	145	1,500	390	5.4
LP 145 G-15-A 67-77-ACA		T&F (3 Hook, 180 mm)	145	1,500	480	6.7
LP 152 B-30-A 08-77-ACA		S&F	152	300	60	0.8
LP 152 B-30-A 10-77-ACA		S&F	152	300	70	1.0
LP 152 B-30-A 12-77-ACA		S&F	152	300	90	1.2
LP 152 B-60-A 16-77-ACA		S&F	152	600	120	1.6
LP 152 B-60-A 21-77-ACA		S&F	152	600	150	2.1
LP 152 B-60-A 27-77-ACA		S&F	152	600	190	2.7
LP 152 B-10-A 27-77-ACA		S&F	152	1,000	190	2.7
LP 152 B-10-A 36-77-ACA		S&F	152	1,000	260	3.6
LP 152 B-10-A 45-77-ACA		S&F	152	1,000	320	4.5
LP 152 B-12-A 32-77-ACA		S&F	152	1,200	230	3.2
LP 152 B-12-A 43-77-ACA		S&F	152	1,200	310	4.3

KEY DATA	Article number	Mounting system	Nominal diameter [mm]	Nominal length [mm]	Nominal volume flow [m ³ /h]	Nominal filter area [m ²]
LP 152 B-12-A 54-77-ACA		S&F	152	1,200	390	5.4
LP 152 B-15-A 40-77-ACA		S&F	152	1,500	290	4.0
LP 152 B-15-A 54-77-ACA		S&F	152	1,500	390	5.4
LP 152 B-15-A 67-77-ACA		S&F	152	1,500	480	6.7
LP 155 B-30-A 08-77-ACA		S&F	155	300	60	0.8
LP 155 B-30-A 10-77-ACA		S&F	155	300	70	1.0
LP 155 B-30-A 12-77-ACA		S&F	155	300	90	1.2
LP 155 B-60-A 16-77-ACA		S&F	155	600	120	1.6
LP 155 B-60-A 21-77-ACA		S&F	155	600	150	2.1
LP 155 B-60-A 27-77-ACA		S&F	155	600	190	2.7
LP 155 B-10-A 27-77-ACA		S&F	155	1,000	190	2.7
LP 155 B-10-A 36-77-ACA		S&F	155	1,000	260	3.6
LP 155 B-10-A 45-77-ACA		S&F	155	1,000	320	4.5
LP 155 B-12-A 32-77-ACA		S&F	155	1,200	230	3.2
LP 155 B-12-A 43-77-ACA		S&F	155	1,200	310	4.3
LP 155 B-12-A 54-77-ACA		S&F	155	1,200	390	5.4
LP 155 B-15-A 40-77-ACA		S&F	155	1,500	290	4.0
LP 155 B-15-A 54-77-ACA	73076328	S&F	155	1,500	390	5.4
LP 155 B-15-A 67-77-ACA		S&F	155	1,500	480	6.7
LP 156 G-30-A 08-77-ACA		T&F (3 Hook, 204 mm)	156	300	60	0.8
LP 156 G-30-A 10-77-ACA		T&F (3 Hook, 204 mm)	156	300	70	1.0
LP 156 G-30-A 12-77-ACA		T&F (3 Hook, 204 mm)	156	300	90	1.2
LP 156 G-60-A 16-77-ACA		T&F (3 Hook, 204 mm)	156	600	120	1.6
LP 156 G-60-A 21-77-ACA	73077263	T&F (3 Hook, 204 mm)	156	600	150	2.1
LP 156 G-60-A 27-77-ACA		T&F (3 Hook, 204 mm)	156	600	190	2.7
LP 156 G-10-A 27-77-ACA		T&F (3 Hook, 204 mm)	156	1,000	190	2.7
LP 156 G-10-A 36-77-ACA		T&F (3 Hook, 204 mm)	156	1,000	260	3.6
LP 156 G-10-A 45-77-ACA		T&F (3 Hook, 204 mm)	156	1,000	320	4.5
LP 156 G-12-A 32-77-ACA		T&F (3 Hook, 204 mm)	156	1,200	230	3.2

KEY DATA	Article number	Mounting system	Nominal diameter [mm]	Nominal length [mm]	Nominal volume flow [m ³ /h]	Nominal filter area [m ²]
LP 156 G-12-A 43-77-ACA	73077160	T&F (3 Hook, 204 mm)	156	1,200	310	4.3
LP 156 G-12-A 54-77-ACA		T&F (3 Hook, 204 mm)	156	1,200	390	5.4
LP 156 G-15-A 40-77-ACA		T&F (3 Hook, 204 mm)	156	1,500	290	4.0
LP 156 G-15-A 54-77-ACA		T&F (3 Hook, 204 mm)	156	1,500	390	5.4
LP 156 G-15-A 67-77-ACA		T&F (3 Hook, 204 mm)	156	1,500	480	6.7
LP 218 G-30-A 15-77-ACA		T&F (3 Hook, 264 mm)	218	300	110	1.5
LP 218 G-30-A 24-77-ACA		T&F (3 Hook, 264 mm)	218	300	170	2.4
LP 218 G-60-A 30-77-ACA	73077237	T&F (3 Hook, 264 mm)	218	600	220	3.0
LP 218 G-60-A 50-77-ACA		T&F (3 Hook, 264 mm)	218	600	360	5.0
LP 218 G-10-A 50-77-ACA	53496861	T&F (3 Hook, 264 mm)	218	1,000	360	5.0
LP 218 G-10-A 83-77-ACA	73077080	T&F (3 Hook, 264 mm)	218	1,000	600	8.3
LP 218 G-12-A 10-77-ACA	73076335	T&F (3 Hook, 264 mm)	218	1,200	720	10.0
LP 218 G-12-A 60-77-ACA	73076357	T&F (3 Hook, 264 mm)	218	1,200	430	6.0
LP 218 G-15-A 12-77-ACA		T&F (3 Hook, 264 mm)	218	1,500	860	12.0
LP 218 G-15-A 75-77-ACA	53595450	T&F (3 Hook, 264 mm)	218	1,500	540	7.5
LP 218 H-30-A 15-77-ACA		T&F (4 Hook, 264 mm)	218	300	110	1.5
LP 218 H-30-A 24-77-ACA		T&F (4 Hook, 264 mm)	218	300	170	2.4
LP 218 H-60-A 30-77-ACA		T&F (4 Hook, 264 mm)	218	600	220	3.0
LP 218 H-60-A 50-77-ACA		T&F (4 Hook, 264 mm)	218	600	360	5.0
LP 218 H-10-A 50-77-ACA		T&F (4 Hook, 264 mm)	218	1,000	360	5.0
LP 218 H-10-A 83-77-ACA		T&F (4 Hook, 264 mm)	218	1,000	600	8.3
LP 218 H-12-A 10-77-ACA		T&F (4 Hook, 264 mm)	218	1,200	720	10.0

KEY DATA	Article number	Mounting system	Nominal diameter [mm]	Nominal length [mm]	Nominal volume flow [m ³ /h]	Nominal filter area [m ²]
LP 218 H-12-A 60-77-ACA		T&F (4 Hook, 264 mm)	218	1,200	430	6.0
LP 218 H-15-A 12-77-ACA		T&F (4 Hook, 264 mm)	218	1,500	860	12.0
LP 218 H-15-A 75-77-ACA		T&F (4 Hook, 264 mm)	218	1,500	540	7.5
LP 320 M-60-A 10-77-ACA		3 Hook, 366 mm	320	600	720	10.0
LP 320 M-60-A 12-77-ACA		3 Hook, 366 mm	320	600	860	12.0
LP 320 M-60-A 77-77-ACA		3 Hook, 366 mm	320	600	550	7.7
LP 320 M-66-A 11-77-ACA		3 Hook, 366 mm	320	660	790	11.0
LP 320 M-66-A 14-77-ACA		3 Hook, 366 mm	320	660	1,000	14.0
LP 320 M-66-A 85-77-ACA		3 Hook, 366 mm	320	660	610	8.5
LP 320 M-10-A 13-77-ACA	53612759	3 Hook, 366 mm	320	1,000	940	13.0
LP 320 M-10-A 16-77-ACA		3 Hook, 366 mm	320	1,000	1,200	16.0
LP 320 M-10-A 21-77-ACA		3 Hook, 366 mm	320	1,000	1,500	21.0
LP 320 M-12-A 15-77-ACA		3 Hook, 366 mm	320	1,200	1,100	15.0
LP 320 M-12-A 20-77-ACA		3 Hook, 366 mm	320	1,200	1,400	20.0
LP 320 M-12-A 25-77-ACA		3 Hook, 366 mm	320	1,200	1,800	25.0
LP 320 M-15-A 20-77-ACA		3 Hook, 366 mm	320	1,500	1,400	20.0
LP 320 M-15-A 25-77-ACA		3 Hook, 366 mm	320	1,500	1,800	25.0
LP 320 M-15-A 31-77-ACA		3 Hook, 366 mm	320	1,500	2,200	31.0
LP 324 F-60-A 10-77-ACA		T&F (no Hook)	324	600	720	10.0
LP 324 F-60-A 12-77-ACA		T&F (no Hook)	324	600	860	12.0
LP 324 F-60-A 77-77-ACA		T&F (no Hook)	324	600	550	7.7
LP 324 F-66-A 11-77-ACA		T&F (no Hook)	324	660	790	11.0
LP 324 F-66-A 14-77-ACA		T&F (no Hook)	324	660	1,000	14.0
LP 324 F-66-A 85-77-ACA		T&F (no Hook)	324	660	610	8.5
LP 324 F-10-A 13-77-ACA		T&F (no Hook)	324	1,000	940	13.0
LP 324 F-10-A 16-77-ACA		T&F (no Hook)	324	1,000	1,200	16.0
LP 324 F-10-A 21-77-ACA		T&F (no Hook)	324	1,000	1,500	21.0
LP 324 F-12-A 15-77-ACA		T&F (no Hook)	324	1,200	1,100	15.0
LP 324 F-12-A 20-77-ACA	53589244	T&F (no Hook)	324	1,200	1,400	20.0
LP 324 F-12-A 25-77-ACA		T&F (no Hook)	324	1,200	1,800	25.0
LP 324 F-15-A 20-77-ACA		T&F (no Hook)	324	1,500	1,400	20.0
LP 324 F-15-A 25-77-ACA		T&F (no Hook)	324	1,500	1,800	25.0
LP 324 F-15-A 31-77-ACA		T&F (no Hook)	324	1,500	2,200	31.0

KEY DATA	Article number	Mounting system	Nominal diameter [mm]	Nominal length [mm]	Nominal volume flow [m ³ /h]	Nominal filter area [m ²]
LP 324 G-60-A 10-77-ACA	73077132	T&F (3 Hook, 392 mm)	324	600	720	10.0
LP 324 G-60-A 12-77-ACA	73076324	T&F (3 Hook, 392 mm)	324	600	860	12.0
LP 324 G-60-A 77-77-ACA	73076332	T&F (3 Hook, 392 mm)	324	600	550	7.7
LP 324 G-66-A 11-77-ACA		T&F (3 Hook, 392 mm)	324	660	790	11.0
LP 324 G-66-A 14-77-ACA		T&F (3 Hook, 392 mm)	324	660	1,000	14.0
LP 324 G-66-A 85-77-ACA		T&F (3 Hook, 392 mm)	324	660	610	8.5
LP 324 G-10-A 13-77-ACA	73076988	T&F (3 Hook, 392 mm)	324	1,000	940	13.0
LP 324 G-10-A 16-77-ACA	73077284	T&F (3 Hook, 392 mm)	324	1,000	1,200	16.0
LP 324 G-10-A 21-77-ACA	73076320	T&F (3 Hook, 392 mm)	324	1,000	1,500	21.0
LP 324 G-12-A 15-77-ACA	73077105	T&F (3 Hook, 392 mm)	324	1,200	1,100	15.0
LP 324 G-12-A 20-77-ACA	73077143	T&F (3 Hook, 392 mm)	324	1,200	1,400	20.0
LP 324 G-12-A 25-77-ACA	73077129	T&F (3 Hook, 392 mm)	324	1,200	1,800	25.0
LP 324 G-15-A 20-77-ACA	53578877	T&F (3 Hook, 392 mm)	324	1,500	1,400	20.0
LP 324 G-15-A 25-77-ACA		T&F (3 Hook, 392 mm)	324	1,500	1,800	25.0
LP 324 G-15-A 31-77-ACA	53572211	T&F (3 Hook, 392 mm)	324	1,500	2,200	31.0
LP 324 Y-60-A 10-77-ACA		Rectangle Flange (406 mm x 362 mm)	324	600	720	10.0
LP 324 Y-60-A 12-77-ACA		Rectangle Flange (406 mm x 362 mm)	324	600	860	12.0
LP 324 Y-60-A 77-77-ACA		Rectangle Flange (406 mm x 362 mm)	324	600	550	7.7
LP 324 Y-66-A 11-77-ACA		Rectangle Flange (406 mm x 362 mm)	324	660	790	11.0
LP 324 Y-66-A 14-77-ACA		Rectangle Flange (406 mm x 362 mm)	324	660	1,000	14.0

KEY DATA	Article number	Mounting system	Nominal diameter [mm]	Nominal length [mm]	Nominal volume flow [m ³ /h]	Nominal filter area [m ²]
LP 324 Y-66-A 85-77-ACA		Rectangle Flange (406 mm x 362 mm)	324	660	610	8.5
LP 324 Y-10-A 13-77-ACA		Rectangle Flange (406 mm x 362 mm)	324	1,000	940	13.0
LP 324 Y-10-A 16-77-ACA		Rectangle Flange (406 mm x 362 mm)	324	1,000	1,200	16.0
LP 324 Y-10-A 21-77-ACA		Rectangle Flange (406 mm x 362 mm)	324	1,000	1,500	21.0
LP 324 Y-12-A 15-77-ACA		Rectangle Flange (406 mm x 362 mm)	324	1,200	1,100	15.0
LP 324 Y-12-A 20-77-ACA		Rectangle Flange (406 mm x 362 mm)	324	1,200	1,400	20.0
LP 324 Y-12-A 25-77-ACA		Rectangle Flange (406 mm x 362 mm)	324	1,200	1,800	25.0
LP 324 Y-15-A 20-77-ACA		Rectangle Flange (406 mm x 362 mm)	324	1,500	1,400	20.0
LP 324 Y-15-A 25-77-ACA		Rectangle Flange (406 mm x 362 mm)	324	1,500	1,800	25.0
LP 324 Y-15-A 31-77-ACA		Rectangle Flange (406 mm x 362 mm)	324	1,500	2,200	31.0
LP 327 B-60-A 10-77-ACA		Bayonet	327	600	720	10.0
LP 327 B-60-A 12-77-ACA		Bayonet	327	600	860	12.0
LP 327 B-60-A 77-77-ACA		Bayonet	327	600	550	7.7
LP 327 B-66-A 11-77-ACA		Bayonet	327	660	790	11.0
LP 327 B-66-A 14-77-ACA		Bayonet	327	660	1,000	14.0
LP 327 B-66-A 85-77-ACA		Bayonet	327	660	610	8.5
LP 327 B-71-A 10-77-ACA		Bayonet	327	710	720	10.0
LP 327 B-71-A 12-77-ACA		Bayonet	327	710	860	12.0
LP 327 B-71-A 15-77-ACA		Bayonet	327	710	1,100	15.0
LP 327 B-75-A 10-77-ACA		Bayonet	327	750	720	10.0
LP 327 B-75-A 12-77-ACA		Bayonet	327	750	860	12.0
LP 327 B-75-A 16-77-ACA		Bayonet	327	750	1,200	16.0
LP 327 B-10-A 13-77-ACA		Bayonet	327	1,000	940	13.0

KEY DATA	Article number	Mounting system	Nominal diameter [mm]	Nominal length [mm]	Nominal volume flow [m ³ /h]	Nominal filter area [m ²]
LP 327 B-10-A 16-77-ACA		Bayonet	327	1,000	1,200	16.0
LP 327 B-10-A 21-77-ACA		Bayonet	327	1,000	1,500	21.0
LP 327 B-12-A 15-77-ACA		Bayonet	327	1,200	1,100	15.0
LP 327 B-12-A 20-77-ACA		Bayonet	327	1,200	1,400	20.0
LP 327 B-12-A 25-77-ACA		Bayonet	327	1,200	1,800	25.0
LP 327 B-15-A 20-77-ACA		Bayonet	327	1,500	1,400	20.0
LP 327 B-15-A 25-77-ACA		Bayonet	327	1,500	1,800	25.0
LP 327 B-15-A 31-77-ACA		Bayonet	327	1,500	2,200	31.0
LP 327 D-60-A 10-77-ACA	73077176	DIN (open)	327	600	720	10.0
LP 327 D-60-A 12-77-ACA		DIN (open)	327	600	860	12.0
LP 327 D-60-A 77-77-ACA		DIN (open)	327	600	550	7.7
LP 327 D-66-A 11-77-ACA	73076358	DIN (open)	327	660	790	11.0
LP 327 D-66-A 14-77-ACA	73077180	DIN (open)	327	660	1,000	14.0
LP 327 D-66-A 85-77-ACA		DIN (open)	327	660	610	8.5
LP 327 D-71-A 10-77-ACA		DIN (open)	327	710	720	10.0
LP 327 D-71-A 12-77-ACA		DIN (open)	327	710	860	12.0
LP 327 D-71-A 15-77-ACA		DIN (open)	327	710	1,100	15.0
LP 327 D-75-A 10-77-ACA		DIN (open)	327	750	720	10.0
LP 327 D-75-A 12-77-ACA		DIN (open)	327	750	860	12.0
LP 327 D-75-A 16-77-ACA		DIN (open)	327	750	1,200	16.0
LP 327 D-10-A 13-77-ACA		DIN (open)	327	1,000	940	13.0
LP 327 D-10-A 16-77-ACA		DIN (open)	327	1,000	1,200	16.0
LP 327 D-10-A 21-77-ACA		DIN (open)	327	1,000	1,500	21.0
LP 327 D-12-A 15-77-ACA		DIN (open)	327	1,200	1,100	15.0
LP 327 D-12-A 20-77-ACA		DIN (open)	327	1,200	1,400	20.0
LP 327 D-12-A 25-77-ACA		DIN (open)	327	1,200	1,800	25.0
LP 327 D-15-A 20-77-ACA		DIN (open)	327	1,500	1,400	20.0
LP 327 D-15-A 25-77-ACA		DIN (open)	327	1,500	1,800	25.0
LP 327 D-15-A 31-77-ACA		DIN (open)	327	1,500	2,200	31.0
LP 327 S-60-A 10-77-ACA	73076345	DIN (center hole)	327	600	720	10.0
LP 327 S-60-A 12-77-ACA	53589242	DIN (center hole)	327	600	860	12.0
LP 327 S-60-A 77-77-ACA	53610430	DIN (center hole)	327	600	550	7.7
LP 327 S-66-A 11-77-ACA	73076329	DIN (center hole)	327	660	790	11.0
LP 327 S-66-A 14-77-ACA	73076987	DIN (center hole)	327	660	1,000	14.0
LP 327 S-66-A 85-77-ACA	73077187	DIN (center hole)	327	660	610	8.5
LP 327 S-71-A 10-77-ACA		DIN (center hole)	327	710	720	10.0

KEY DATA	Article number	Mounting system	Nominal diameter [mm]	Nominal length [mm]	Nominal volume flow [m ³ /h]	Nominal filter area [m ²]
LP 327 S-71-A 12-77-ACA		DIN (center hole)	327	710	860	12.0
LP 327 S-71-A 15-77-ACA		DIN (center hole)	327	710	1,100	15.0
LP 327 S-75-A 10-77-ACA		DIN (center hole)	327	750	720	10.0
LP 327 S-75-A 12-77-ACA	73077307	DIN (center hole)	327	750	860	12.0
LP 327 S-75-A 16-77-ACA		DIN (center hole)	327	750	1,200	16.0
LP 327 S-10-A 13-77-ACA	73077118	DIN (center hole)	327	1,000	940	13.0
LP 327 S-10-A 16-77-ACA		DIN (center hole)	327	1,000	1,200	16.0
LP 327 S-10-A 21-77-ACA	73076319	DIN (center hole)	327	1,000	1,500	21.0
LP 327 S-12-A 15-77-ACA		DIN (center hole)	327	1,200	1,100	15.0
LP 327 S-12-A 20-77-ACA	73077246	DIN (center hole)	327	1,200	1,400	20.0
LP 327 S-12-A 25-77-ACA	73077177	DIN (center hole)	327	1,200	1,800	25.0
LP 327 S-15-A 20-77-ACA		DIN (center hole)	327	1,500	1,400	20.0
LP 327 S-15-A 25-77-ACA		DIN (center hole)	327	1,500	1,800	25.0
LP 327 S-15-A 31-77-ACA		DIN (center hole)	327	1,500	2,200	31.0
LP 351 D-60-A 10-77-ACA		DIN (open)	351	600	720	10.0
LP 351 D-60-A 12-77-ACA		DIN (open)	351	600	860	12.0
LP 351 D-60-A 77-77-ACA		DIN (open)	351	600	550	7.7
LP 351 D-66-A 11-77-ACA	53575526	DIN (open)	351	660	790	11.0
LP 351 D-66-A 14-77-ACA	73077220	DIN (open)	351	660	1,000	14.0
LP 351 D-66-A 85-77-ACA		DIN (open)	351	660	610	8.5
LP 351 D-71-A 10-77-ACA		DIN (open)	351	710	720	10.0
LP 351 D-71-A 12-77-ACA		DIN (open)	351	710	860	12.0
LP 351 D-71-A 15-77-ACA		DIN (open)	351	710	1,100	15.0
LP 351 D-75-A 10-77-ACA		DIN (open)	351	750	720	10.0
LP 351 D-75-A 12-77-ACA		DIN (open)	351	750	860	12.0
LP 351 D-75-A 16-77-ACA		DIN (open)	351	750	1,200	16.0
LP 351 D-10-A 13-77-ACA		DIN (open)	351	1,000	940	13.0
LP 351 D-10-A 16-77-ACA		DIN (open)	351	1,000	1,200	16.0
LP 351 D-10-A 21-77-ACA		DIN (open)	351	1,000	1,500	21.0
LP 351 D-12-A 15-77-ACA		DIN (open)	351	1,200	1,100	15.0
LP 351 D-12-A 20-77-ACA		DIN (open)	351	1,200	1,400	20.0
LP 351 D-12-A 25-77-ACA		DIN (open)	351	1,200	1,800	25.0
LP 351 D-15-A 20-77-ACA		DIN (open)	351	1,500	1,400	20.0
LP 351 D-15-A 25-77-ACA		DIN (open)	351	1,500	1,800	25.0
LP 351 D-15-A 31-77-ACA		DIN (open)	351	1,500	2,200	31.0
LP 351 S-60-A 10-77-ACA	73076313	DIN (center hole)	351	600	720	10.0

KEY DATA	Article number	Mounting system	Nominal diameter [mm]	Nominal length [mm]	Nominal volume flow [m ³ /h]	Nominal filter area [m ²]
LP 351 S-60-A 12-77-ACA		DIN (center hole)	351	600	860	12.0
LP 351 S-60-A 77-77-ACA		DIN (center hole)	351	600	550	7.7
LP 351 S-66-A 11-77-ACA		DIN (center hole)	351	660	790	11.0
LP 351 S-66-A 14-77-ACA		DIN (center hole)	351	660	1,000	14.0
LP 351 S-66-A 85-77-ACA		DIN (center hole)	351	660	610	8.5
LP 351 S-71-A 10-77-ACA		DIN (center hole)	351	710	720	10.0
LP 351 S-71-A 12-77-ACA		DIN (center hole)	351	710	860	12.0
LP 351 S-71-A 15-77-ACA		DIN (center hole)	351	710	1,100	15.0
LP 351 S-75-A 10-77-ACA		DIN (center hole)	351	750	720	10.0
LP 351 S-75-A 12-77-ACA		DIN (center hole)	351	750	860	12.0
LP 351 S-75-A 16-77-ACA		DIN (center hole)	351	750	1,200	16.0
LP 351 S-10-A 13-77-ACA		DIN (center hole)	351	1,000	940	13.0
LP 351 S-10-A 16-77-ACA		DIN (center hole)	351	1,000	1,200	16.0
LP 351 S-10-A 21-77-ACA		DIN (center hole)	351	1,000	1,500	21.0
LP 351 S-12-A 15-77-ACA		DIN (center hole)	351	1,200	1,100	15.0
LP 351 S-12-A 20-77-ACA	53580208	DIN (center hole)	351	1,200	1,400	20.0
LP 351 S-12-A 25-77-ACA		DIN (center hole)	351	1,200	1,800	25.0
LP 351 S-15-A 20-77-ACA		DIN (center hole)	351	1,500	1,400	20.0
LP 351 S-15-A 25-77-ACA		DIN (center hole)	351	1,500	1,800	25.0
LP 351 S-15-A 31-77-ACA		DIN (center hole)	351	1,500	2,200	31.0

The nominal volume flow shown here corresponds to a typical, recommended value for a normally loaded system in the applications mentioned. Depending on the specific application, the optimal volume flow may vary upwards (e.g. coarse, non-abrasive dust) or downwards (e.g. thermal produced dust).

MEDIA AND CHARACTERISTICS

- original Viledon® sinTexx Plus filtermedia: minimum 100% available filter area, corrugation and thermally bonded with two-component fibre.
- exklusive filtermedia produced inhouse at Freudenberg.
- additional corrugation and a nanofiber lining for maximum filtration efficiency in combination with fine dust.
- Dust Class M and certified collection efficiency > 99.95 % right from day one according to EN 60335-2-69:AA.
- resilient woven outer belt design, special versions and versions without outer belt on request.
- ATEX version available.

FEATURES

- long useful lifetime in high loaded systems with critical applications (e.g. plasma cutting), nearly constant differential pressure over the years.
- the corrugated nonwoven's excellent characteristics are combined with upgraded filtration properties.
- perfect combination of high filtration efficiency and low differential pressures.
- humidity resistant: keeping solidity and stability in humid conditions.
- no precoating with FHM 1500, particularly in laser- and plasma-cutting applications and those involving welding smoke.
- improved energy balance for the system's operator.
- serving all typical mountings, lengths and diameters: big selection of available standard designs.
- compatible with original Freudenberg accessories: Pulse-Jet Reflectors (PJR), Filtering aid FHM 1500, Cartridge Protection Sleeves (CPS).

WE LOVE THE DETAILS

www.freudenberg-filter.com/details

The information or figures given are subject to tolerances due to normal production fluctuations. Our explicit written confirmation is required in each case for the correctness of the information. Subject to technical alterations. You will find instructions on how to handle and dispose of loaded filters in our information on product safety and eco-compatibility.

INNOVATING TOGETHER

Contact us

www.freudenberg-filter.com

 **FREUDENBERG**
FILTRATION TECHNOLOGIES

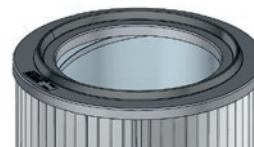
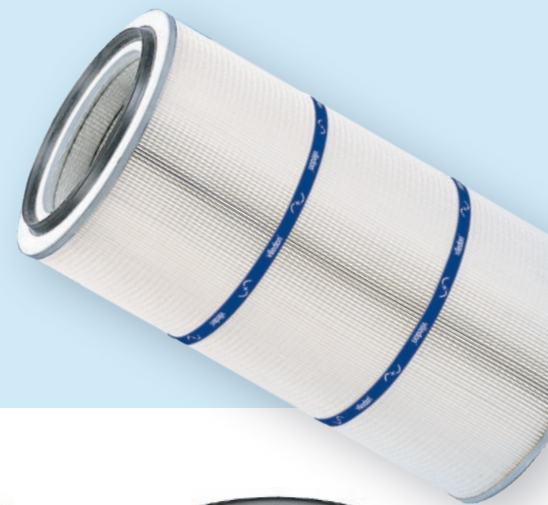
OVERVIEW OF INSTALLATION SYSTEMS

viledon®

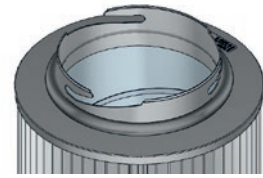
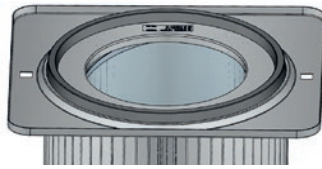
DIN

Features

- Simple installation using a tie-rod or a closure cover
- Safety and reliability thanks to continuously and directly foamed-on gaskets
- Optimum interaction of hardness, compression set, and geometry achieve reliable sealing effect in the operating range



DATA	DIN (200 mm)	DIN (327 mm)	DIN (351 mm)
Item number beginning with	LP 200 S / LP 200 D	LP 327 S / LP 327 D	LP 351 S / LP 351 D
Nominal diameter DIN version	200 mm	327 mm	351 mm
Connection diameter gasket	168 mm	260 mm	297 mm
Openings (optional)		open on one side (S) open on both sides (D)	
Gasket		open on both sides (D): optionally with gasket on both sides	
Installation system	Tie-rod (drill hole – base: 12 mm)	open on one side (S): Tie-rod (drill hole – base: 13 mm / 29 mm) or closed base open on both sides (D): for serial installation	Open on both sides (D): for serial installation
Special features ATEX version	–		open on both sides (D): conductive connecting brackets

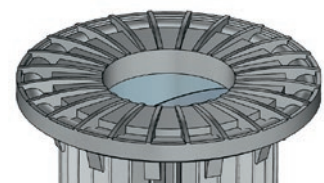
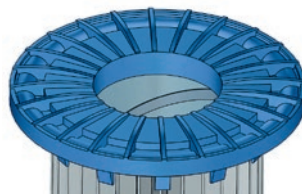
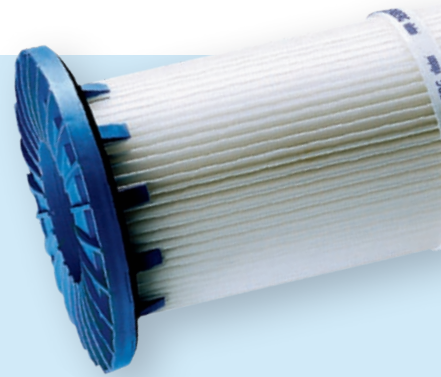


DATA	RECTANGULAR FLANGE (406 mm × 362 mm)	BAYONET (216 mm)
Item number beginning with	LP 324 Y	LP 327 B
Nominal diameter base	324 mm	
Connection diameter gasket	297 mm	229 mm
Form	Rectangular installation head, 406 mm × 362 mm × 12 mm	Bayonet, (Outer) diameter 216 mm
Bolt thickness	–	< 11 mm
Gasket	continuously foamed	soft round gasket for easy installation
Installation system	Plug-in system / slide systems raw-gas side installation	Bayonet system raw-gas side installation
Special features	Frame protrusion for defined maximum gasket compression	easy, tool-free installation

SNAP & FIX

Features

- Clean-gas side installation
- Snap-on hooks for easy installation without additional tools or aids
- Serve as filter bag replacement cartridges
- Structural securing of the gasket against overloading

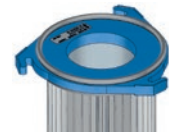
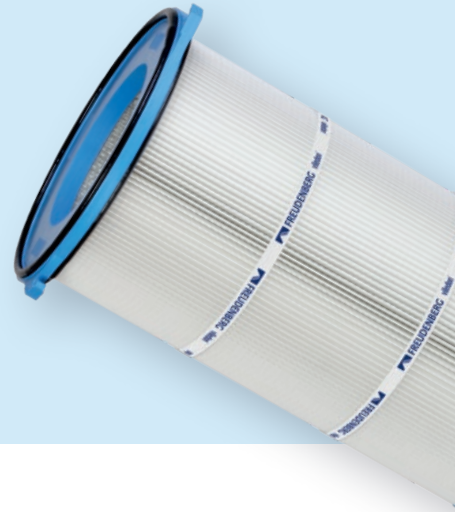


DATA	S&F (152 mm)	S&F (155 mm)
Item number beginning with	LP 152 B	LP 155 B
Connection diameter gasket	176 mm	
Suitable for perforated plate thickness	4 mm	
Installation opening	152 +0.5 / -1 mm	155 +0.5 / -1 mm
Special features	Filter bag replacement cartridge	

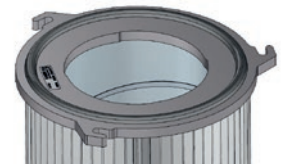
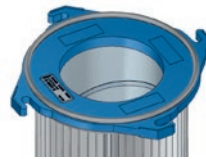
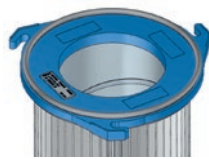
TWIST & FIX

Features

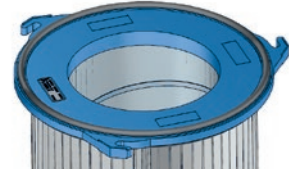
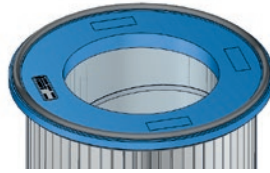
- Injection-molded flange made from glass fiber-reinforced polyamide
- Safety and reliability thanks to continuously and directly foamed-on gaskets
- Double gasket for installation on clean- and raw-gas side
- Minimized risk of failure thanks to dispensing with additional bonding components and seams



DATA	T&F (3 HOOKS, 180 mm)	T&F (WITHOUT HOOKS)	T&F (3 HOOKS, 204 mm)
Item number beginning with	LP 145 G	LP 145 F	LP 156 G
Nominal diameter base	145 mm		156 mm
Installation opening for clean-gas side installation	> 147 mm		≥ 160 mm
Connection diameter gasket	153 mm		171 mm
Hole circle	180 mm	–	204 mm
Bolt thickness	< 11 mm	–	< 11 mm
Installation system	three bolts (120°)	system-side clamping device	three bolts (120°)
Special features	Spacer ribs for defined maximum gasket compression	Filter bag replacement cartridge	Spacer ribs for defined maximum gasket compression



DATA	T&F (3 HOOKS, 264 mm)	T&F (4 HOOKS, 264 mm)	T&F (3 HOOKS, 366 mm)
Item number beginning with	LP 218 G	LP 218 H	LP 320 M
Nominal diameter base	218 mm		324 mm
Installation opening for clean-gas side installation	> 225 mm		–
Connection diameter gasket	232 mm		298 mm
Hole circle	264 mm		366 mm
Bolt thickness	< 13 mm		< 14 mm
Installation system	three bolts (120°)	four bolts (90°)	three bolts (120°)
Special features	Spacer ribs for defined maximum gasket compression		Continuously foamed-on gasket



DATA	T&F (WITHOUT HOOKS)	T&F (3 HOOKS, 392 mm)
Item number beginning with	LP 324 F	LP 324 G
Nominal diameter base	324 mm	
Installation opening for clean-gas side installation	> 330 mm	
Connection diameter gasket	345 mm	
Hole circle	–	392 mm
Bolt thickness	–	< 13 mm
Installation system	system-side clamping device	Three bolts (120°)
Special features	Filter bag replacement cartridge	Spacer ribs for defined maximum gasket compression

The information or figures given are subject to tolerances due to normal production fluctuations. Our explicit written confirmation is required in each case for the correctness of the information. Subject to technical alterations. You will find instructions on how to handle and dispose of loaded filters in our information on product safety and eco-compatibility.

FREUDENBERG FILTRATION TECHNOLOGIES

Contact us

www.freudenberg-filter.com

 **FREUDENBERG**
INNOVATING TOGETHER